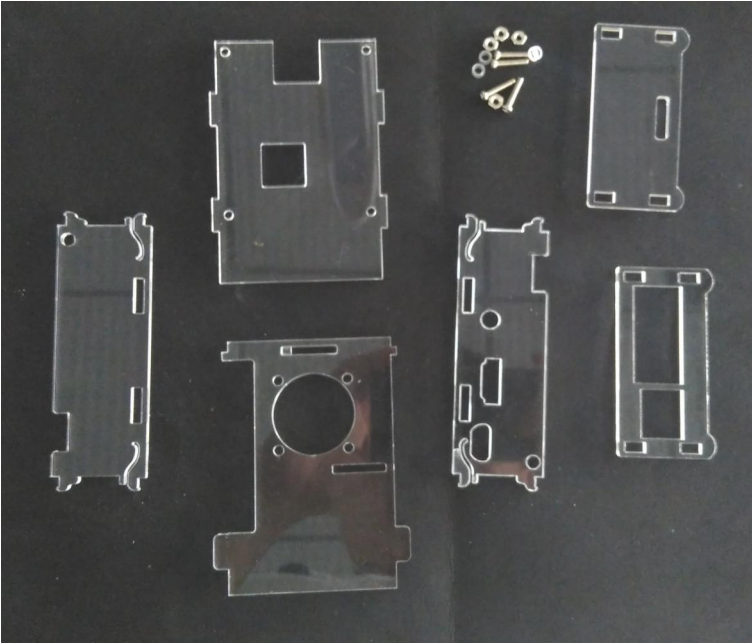


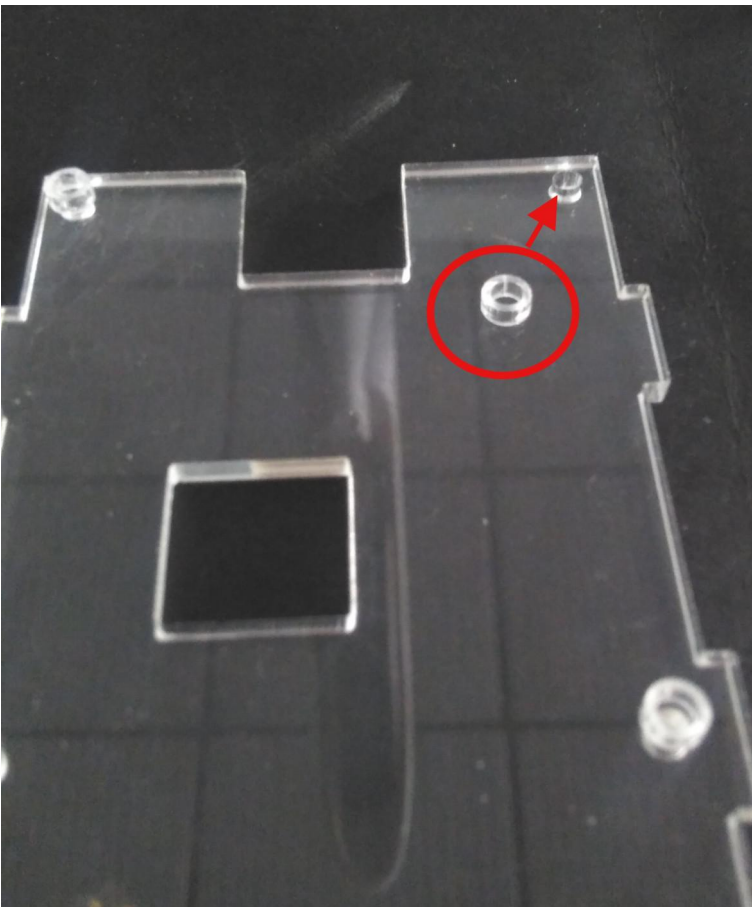
SC11 usage & assembly methods

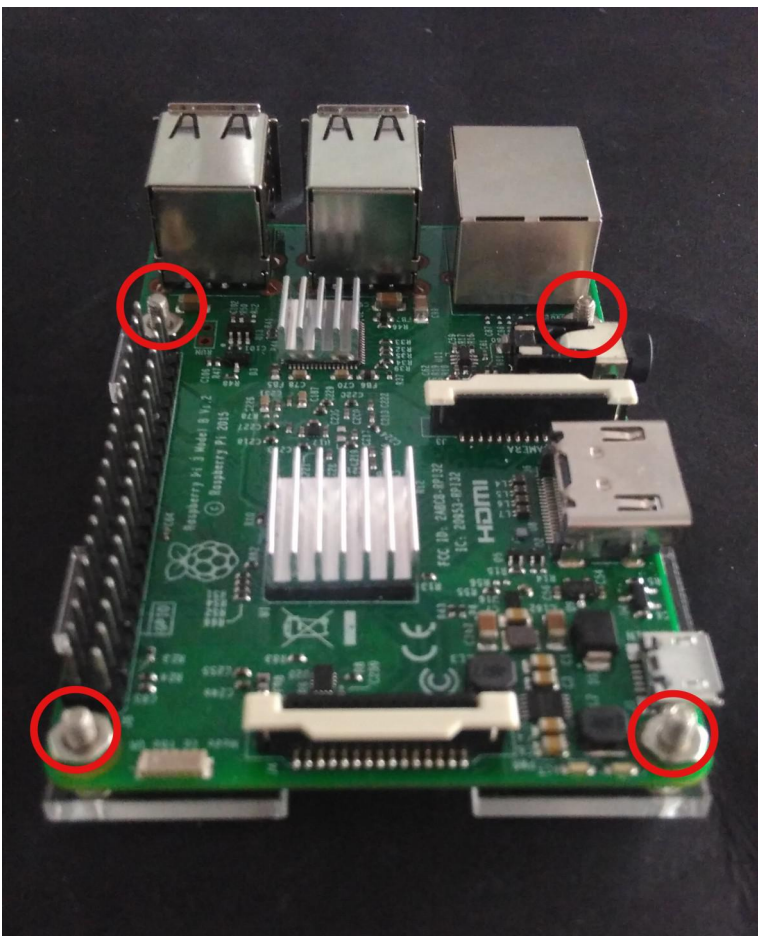
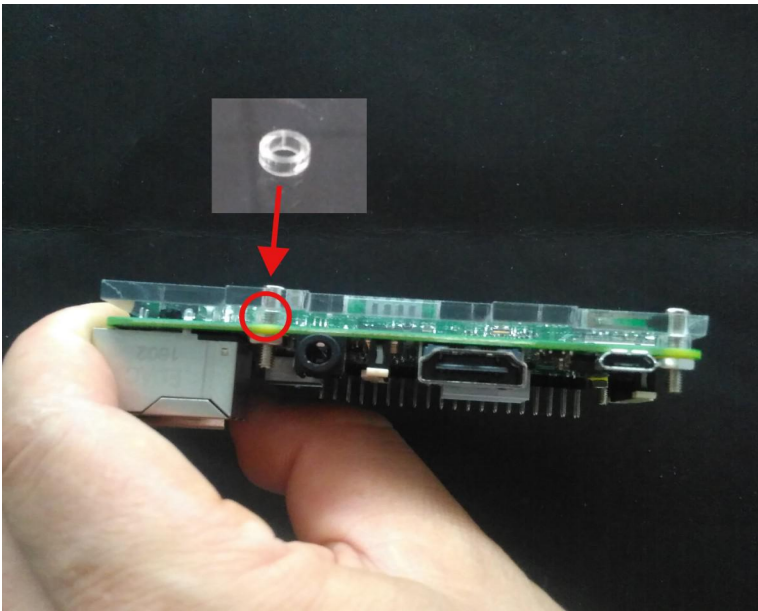
Assembly steps:

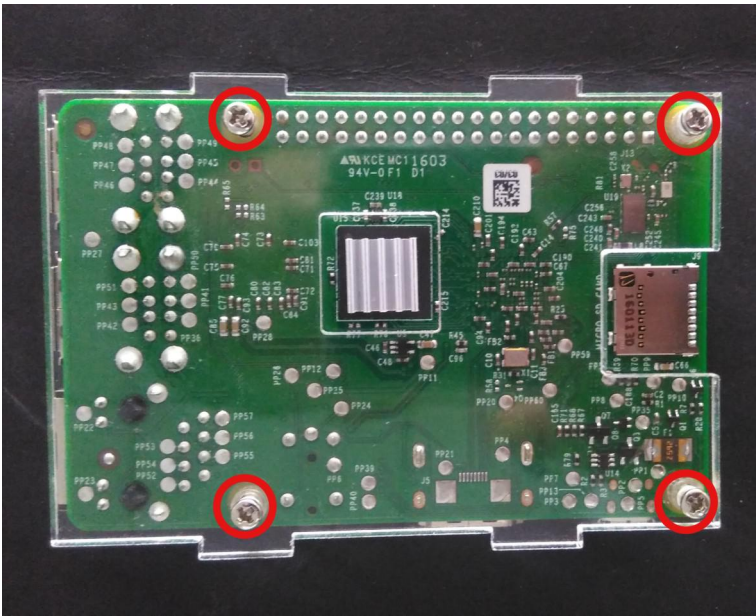
1. First, Open the package and check the accessories: (6 faces of the shell + 4 screws + 4 screws + 4 PCBA pads)



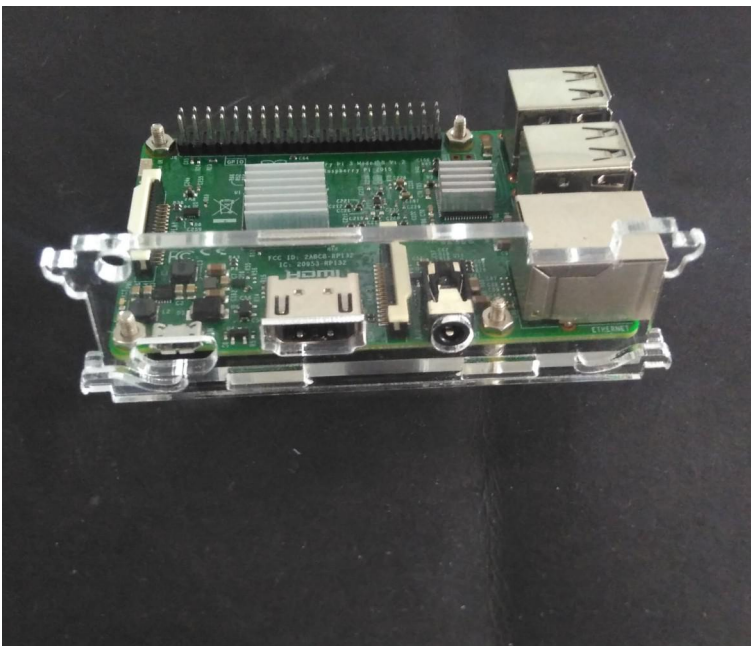
2. Install the bottom shell (the raspberry pi board is aligned to the corresponding direction and the 4 cushion on the board below and then use screws to fix it)



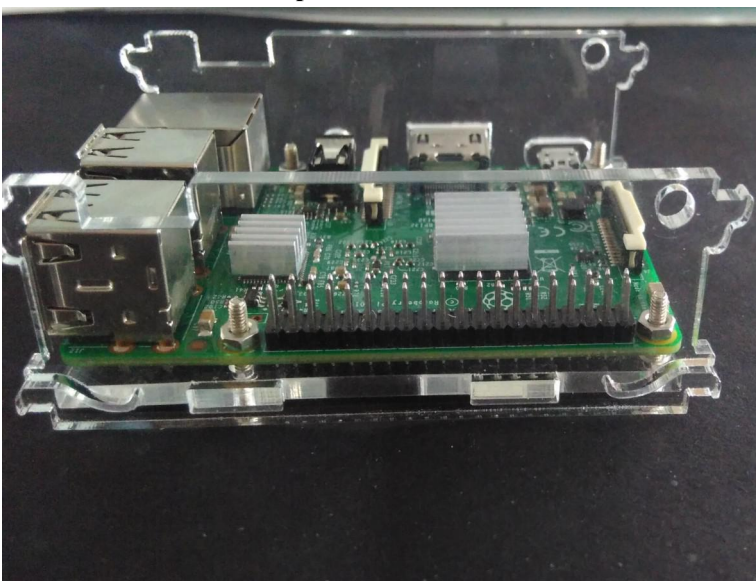




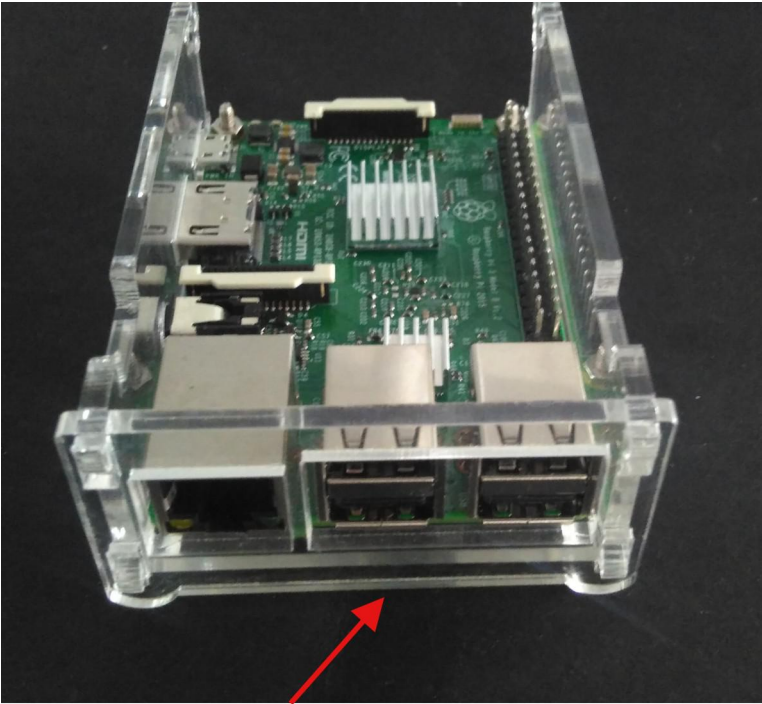
3. Install the side with interface



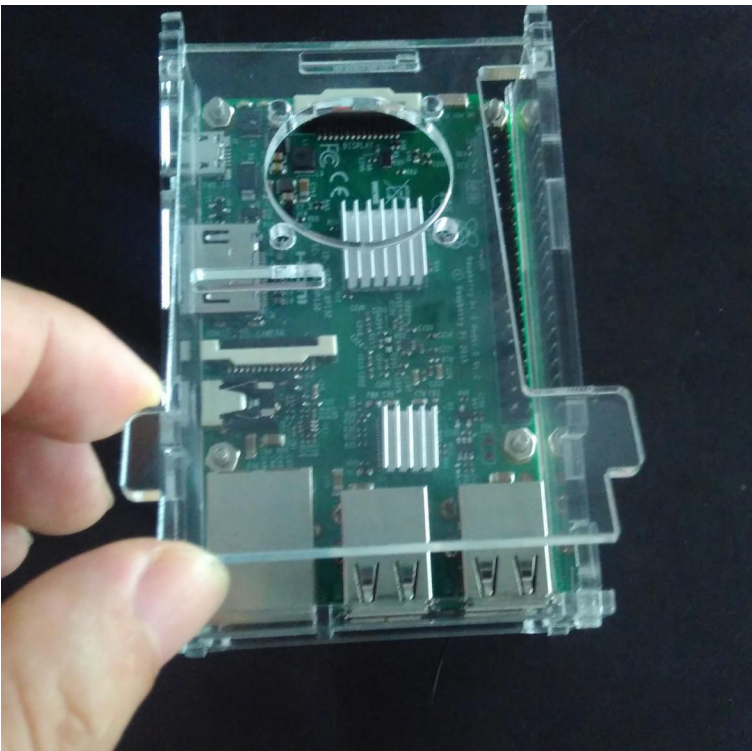
4. Install the other side panel



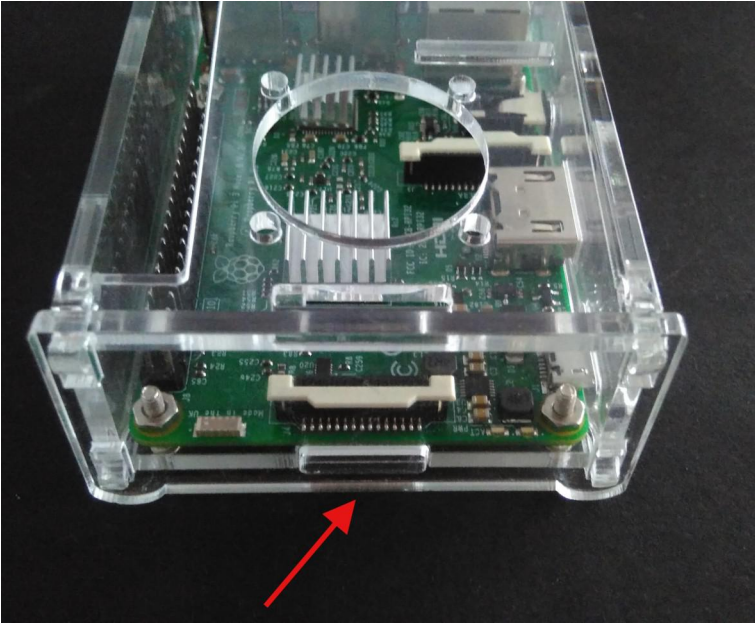
5, Installing USB port side panel



6, Install upper cover (the left and right two columns on the upper cover are placed in the outer shell of the two side panels).



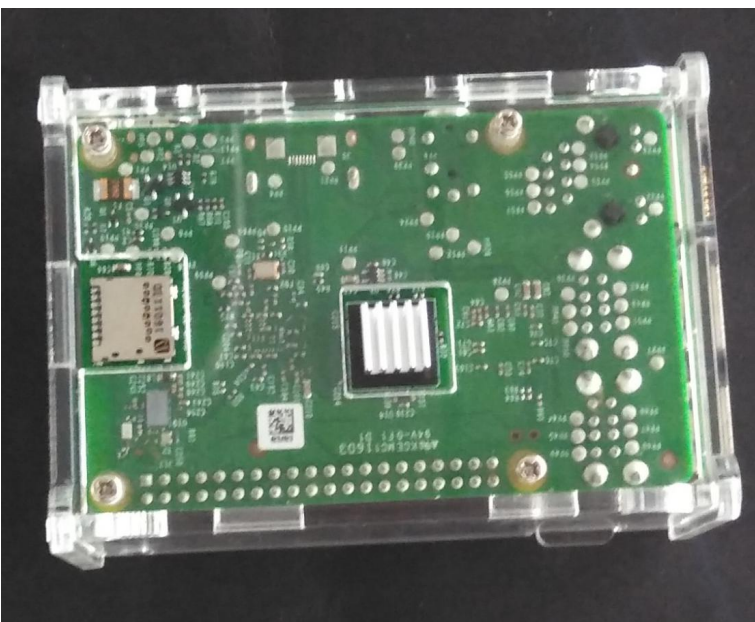
7.Install the SD card side panel



Assembly completed:

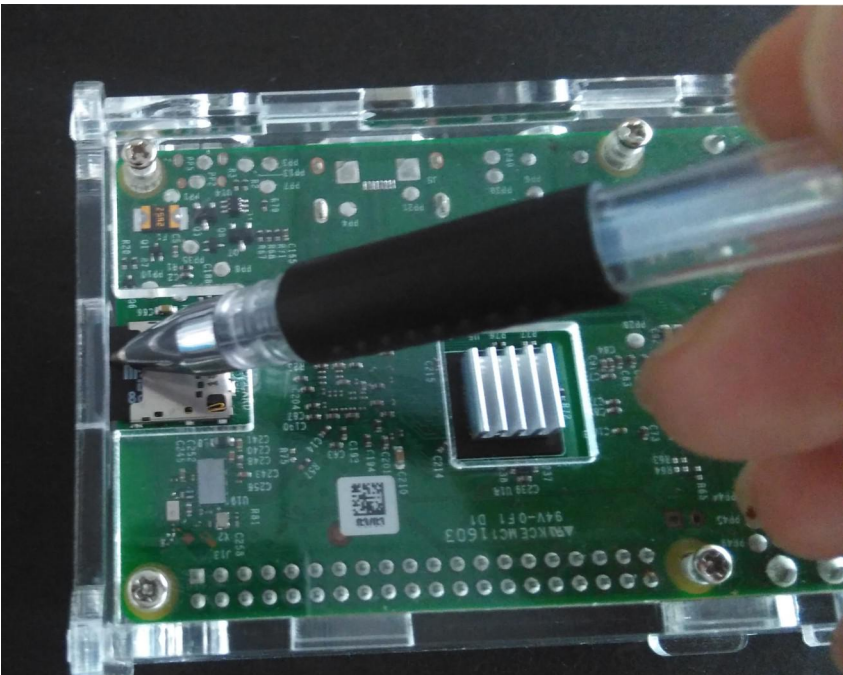
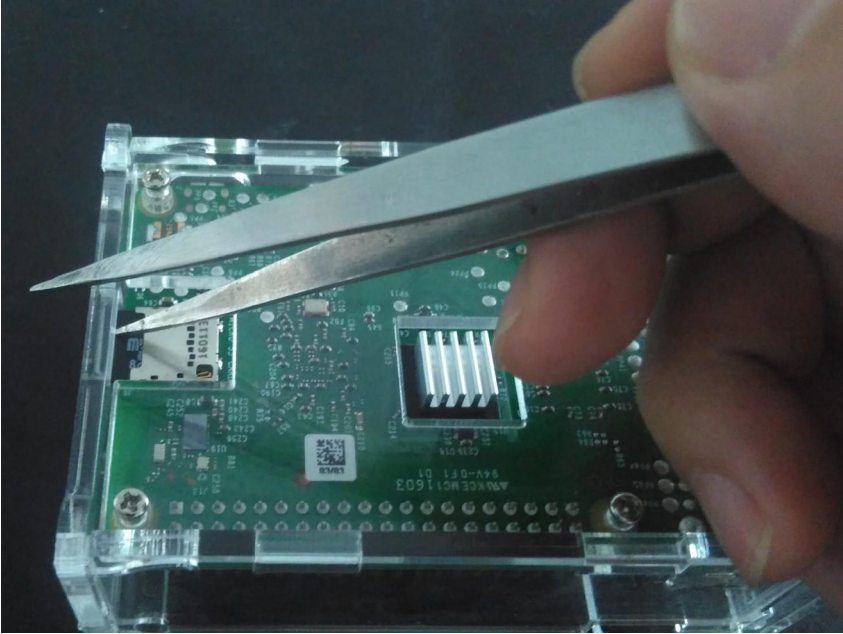


Bottom surface:



SD card pull out method:

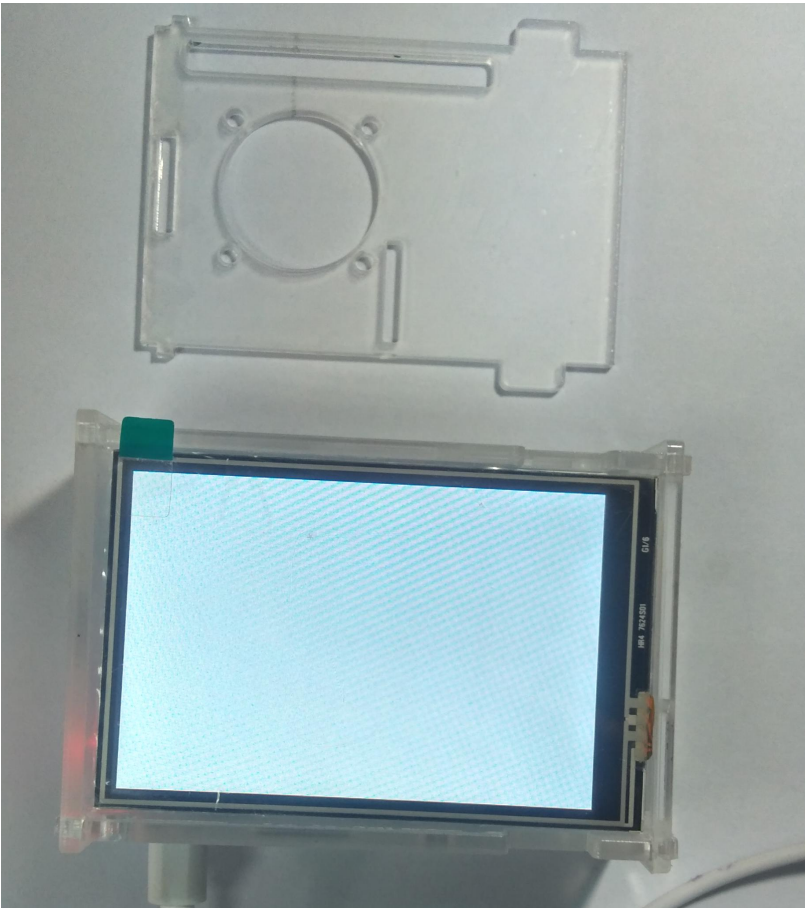
Use sharp tweezer or pen head push the SD card, then you can use the hand to pull it out.



With 3.5 inch screen usage, you can uncover the protection film of the screen.



The screen is inserted into the corresponding interface:



regarding the protection case assemble method, please download the link :

https://mega.nz/#!bIUxhSwL!iIATPIRiu9jA0Oa8vrr-VbAwyFnlsuCwfAmWW8utX_s

Connect 3.5 inch LCD to motherboard, please read below carefully.

https://mega.nz/#F!yVEzQQgB!TfUC-8U72scSzd13raEL_g

if this still do not solve your problem, please let us know, or you could write the email to 2968379892@qq.com, we are always here for you, thanks