

Wireless Speaker

Operating Instructions  
Mode d'emploi  
Manual de instrucciones

SRS-XB10



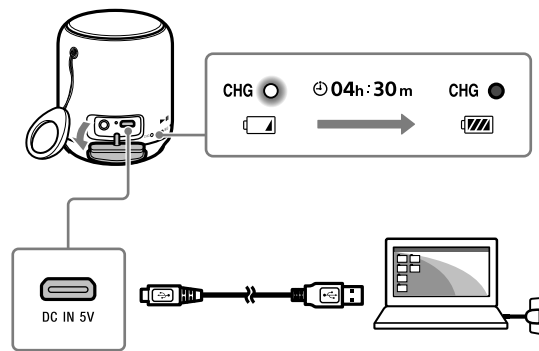
Help Guide  
(web document for a PC/smartphone)



[http://rd1.sony.net/help/speaker/srs-xb10/h\\_zz/](http://rd1.sony.net/help/speaker/srs-xb10/h_zz/)

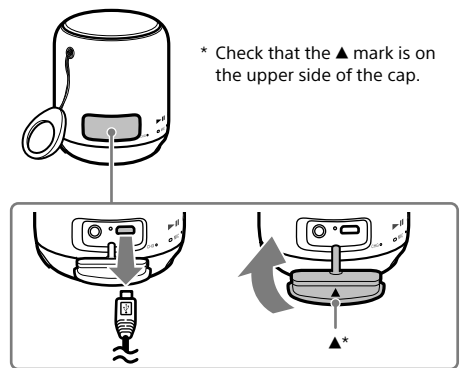
Charging the unit

Charge the battery for the first time.



Close the cap firmly.

The cap plays a very important role in maintenance of the water resistant performance.



BLUETOOTH connection

1 Set the unit to the pairing mode.

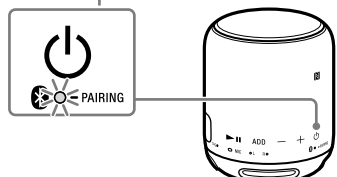
① Press to turn on.



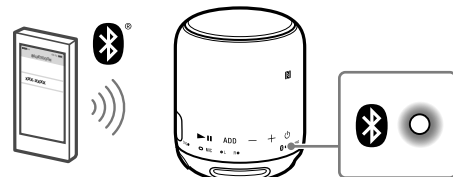
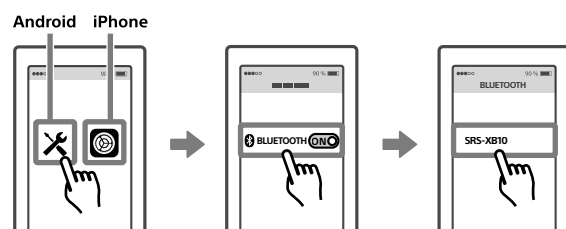
② Press and hold until you hear beeps (about 3 seconds).



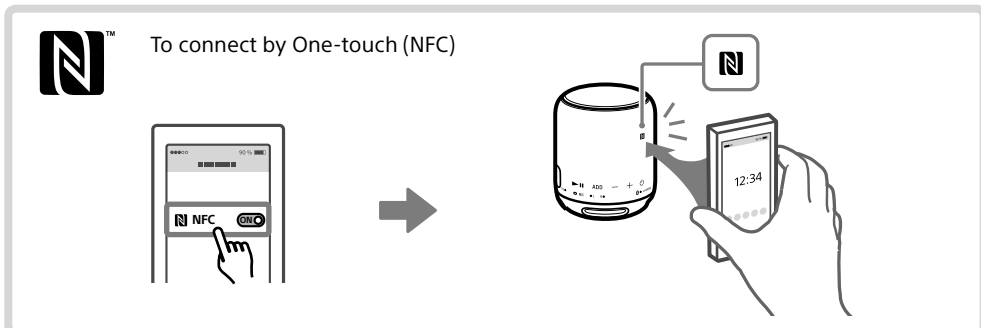
③ Press and hold until you hear beeps (about 3 seconds).



2 Pairing the unit to your smartphone/iPhone.

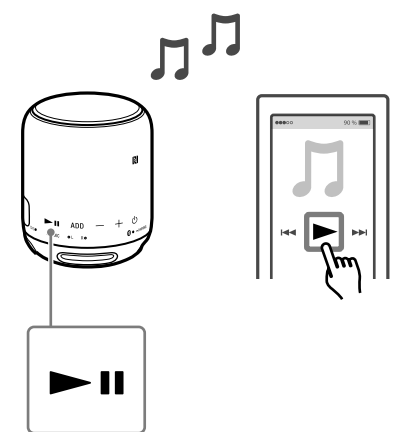


\* Step ② is unnecessary when using the unit for the first time.

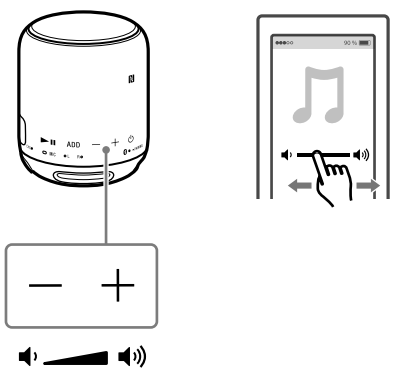


Listening

Start playback.



Adjust the volume.



Listening with two units (Speaker Add function - double mode/stereo mode)

1 Preparation for two SRS-XB10 units.

**A** Unit A

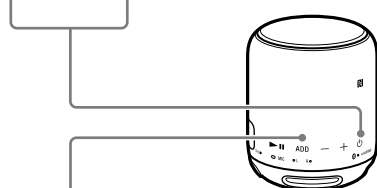


2 Set unit **A** and then **B**.

**A**

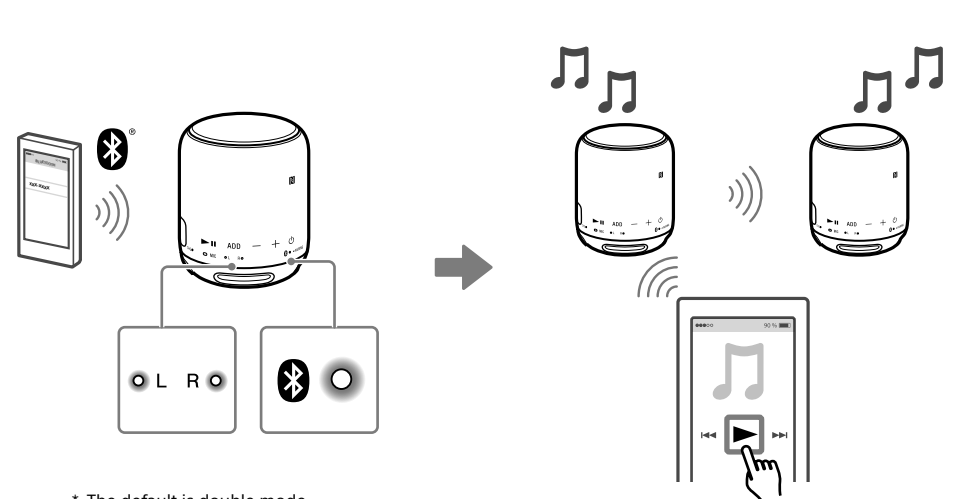


① Press to turn on.



② Press and hold **ADD** until you hear beeps (about 3 seconds).

3 Connect your smartphone/iPhone to unit **A/B** with the indicator lit.



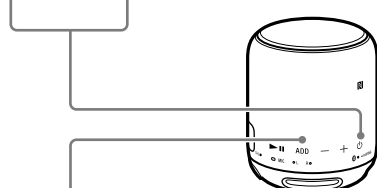
**B** Unit B



**B**

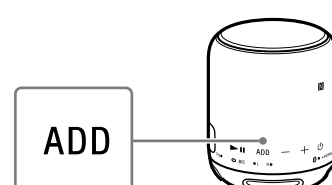


① Press to turn on.



② Press and hold **ADD** until you hear beeps (about 3 seconds).

To switch double mode/stereo mode (Lch/Rch)



Press **ADD (A/B)**.

Wireless Speaker

Operating Instructions  
Mode d'emploi  
Manual de instrucciones

SRS-XB10

**Manuel d'aide**  
(document Web pour PC/téléphone intelligent)

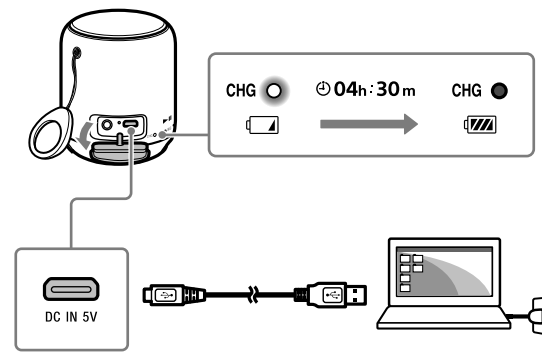
**Guía de ayuda**  
(documento web para una PC o smartphone)




[http://rd1.sony.net/help/speaker/srs-xb10/h\\_zz/](http://rd1.sony.net/help/speaker/srs-xb10/h_zz/)

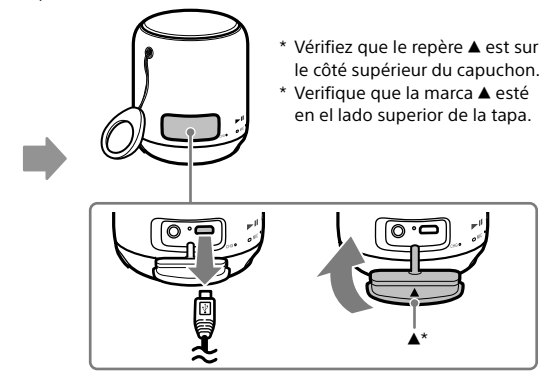
Charge de l'appareil  
Cargar la unidad

Chargez la batterie pour la première fois.  
Cargar la batería por primera vez.



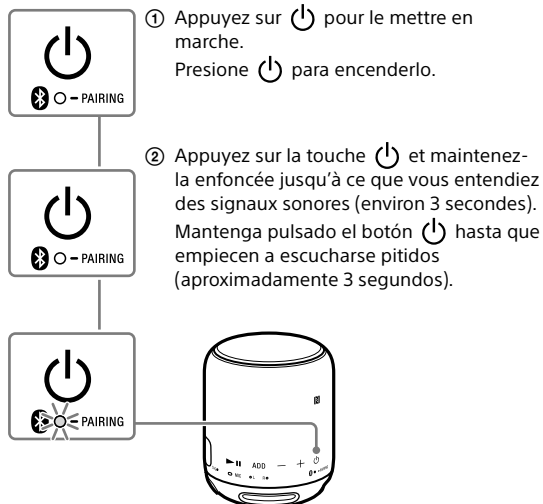
Fermez le capuchon fermement.  
Le capuchon joue un rôle très important pour le maintien des performances de résistance à l'eau.

Cierre firmemente la tapa.  
La cubierta cumple un papel muy importante en el rendimiento de la impermeabilidad.

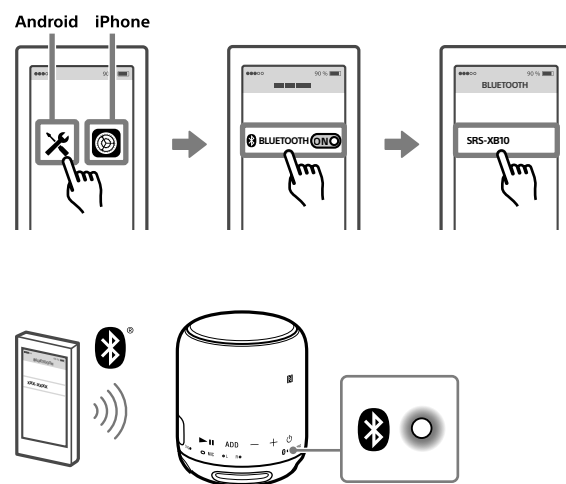


Connexion BLUETOOTH  
Conexión BLUETOOTH

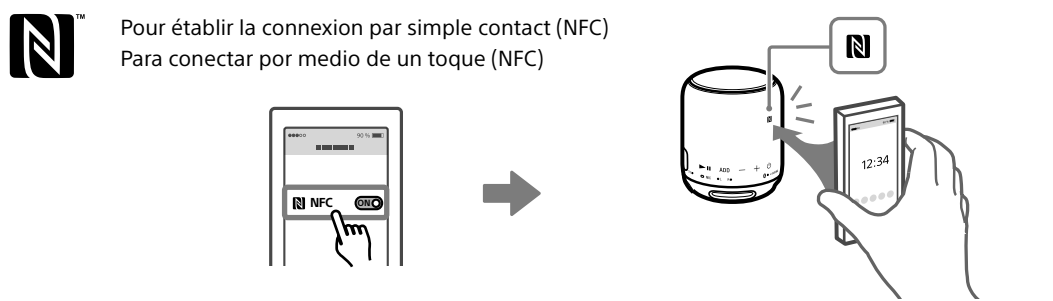
1 Réglez l'appareil en mode de jumelage.  
Configure la unidad en modo emparejamiento.



2 Jumelez l'appareil avec votre téléphone intelligent/iPhone.  
Emparejar la unidad con su smartphone/iPhone.

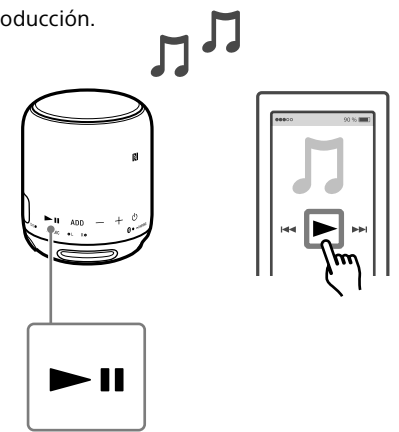


\* L'étape ② n'est pas requise lorsque vous utilisez l'appareil pour la première fois.  
\* El paso ② no es necesario cuando se utiliza la unidad por primera vez.

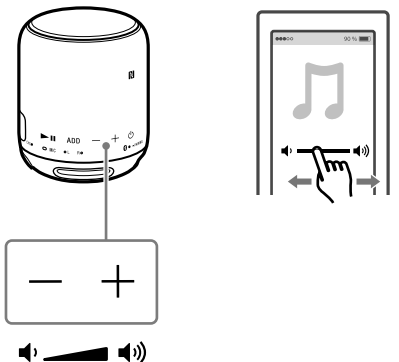


Écoute  
Reproducir

Démarrez la lecture.  
Comenzar la reproducción.



Réglez le volume.  
Ajustar el volumen.



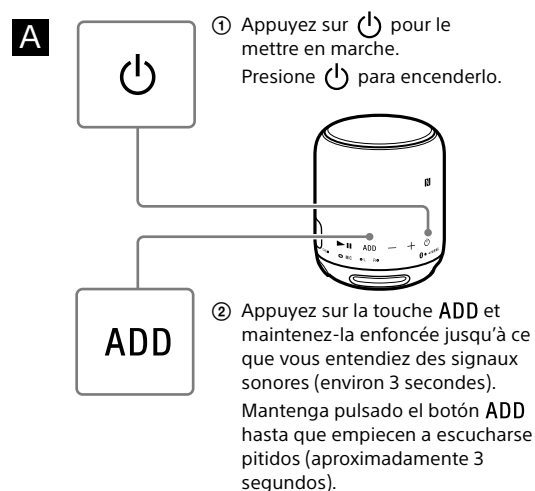
Écoute à l'aide de deux appareils (Fonction d'ajout de haut-parleur - mode double/mode stéréo)  
Reproducir en dos unidades (Función para agregar altavoces - modo doble/modo estéreo)

1 Préparez deux appareils SRS-XB10.  
Preparación para dos unidades SRS-XB10.

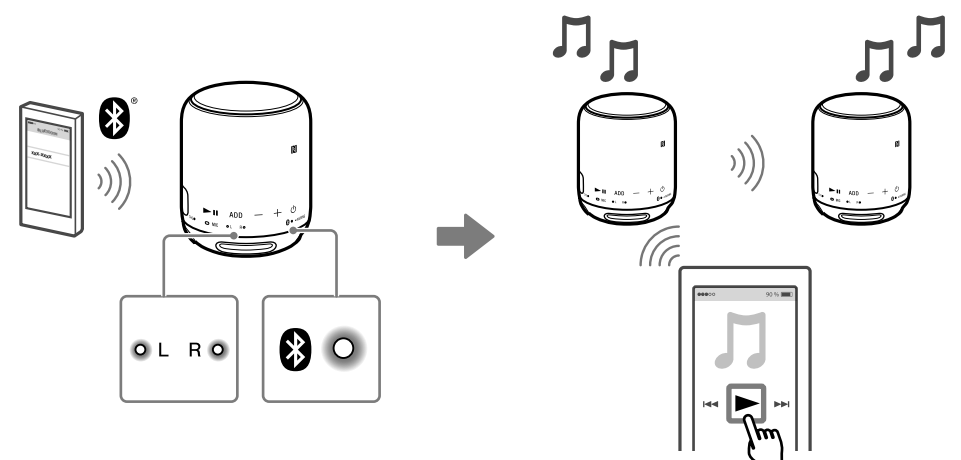
**A** Appareil A/Unidad A



2 Réglez l'appareil **A**, puis l'appareil **B**.  
Configure la unidad **A** y luego la **B**.

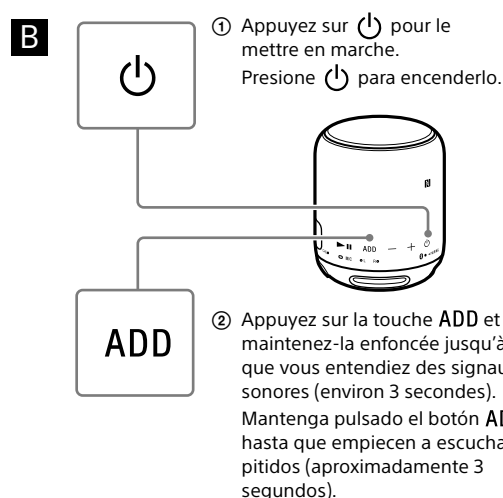


3 Connectez votre téléphone intelligent/iPhone à l'appareil **A/B** dont le témoin est allumé.  
Conecte su smartphone/iPhone a la unidad **A/B** con el indicador encendido.

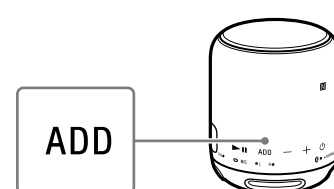


\* Le mode double est le mode par défaut.  
\* El modo predeterminado es el modo doble.

**B** Appareil B/Unidad B



Pour alterner entre mode double/mode stéréo (canal G/canal D)  
Para conmutar entre modo doble/modo estéreo (Canal Izq./Canal Der.)



Appuyez sur **ADD (A/B)**.  
Presione **ADD (A/B)**.

## What you can do with the speaker

- One-touch connection (NFC)
- BLUETOOTH® Ver. 4.2
- Compatible BLUETOOTH profiles<sup>\*1</sup>: A2DP, AVRCP, HFP, HSP
- By connecting the speaker with a smartphone via BLUETOOTH, you can talk hands-free using the built-in microphone and speaker.
- “Noise suppression” and “Echo cancellation” enable phone calls with high-quality sound.  
Noise suppression: Noise picked up by the speaker is suppressed, so the caller will hear your voice with less noise.  
Echo cancellation: By reducing sound from the speaker picked up by the speaker microphone, echoes generated by the caller’s phone will be suppressed.
- You can enjoy up to about 16 hours<sup>\*2\*3</sup> of continuous wireless music playback with the built-in lithium ion rechargeable battery.
- By using the AUDIO IN jack (external input jack), you can enjoy music of portable audio devices, etc.
- By connecting two SRS-XB10 speakers via BLUETOOTH, you can play audio in either stereo mode (stereo sound) or double mode.
- The speaker has a water resistant specification<sup>\*4\*5</sup> of IPX5<sup>\*6</sup> as specified in “Degrees of protection against ingress of water” of the IEC60529 “Ingress Protection Rating (IP Code).”

<sup>\*1</sup>BLUETOOTH standard profiles indicate the purpose of BLUETOOTH communication between devices.

<sup>\*2</sup>The battery life may vary depending on the ambient temperature or conditions of use. The method of estimating the battery life has been changed since 2015.

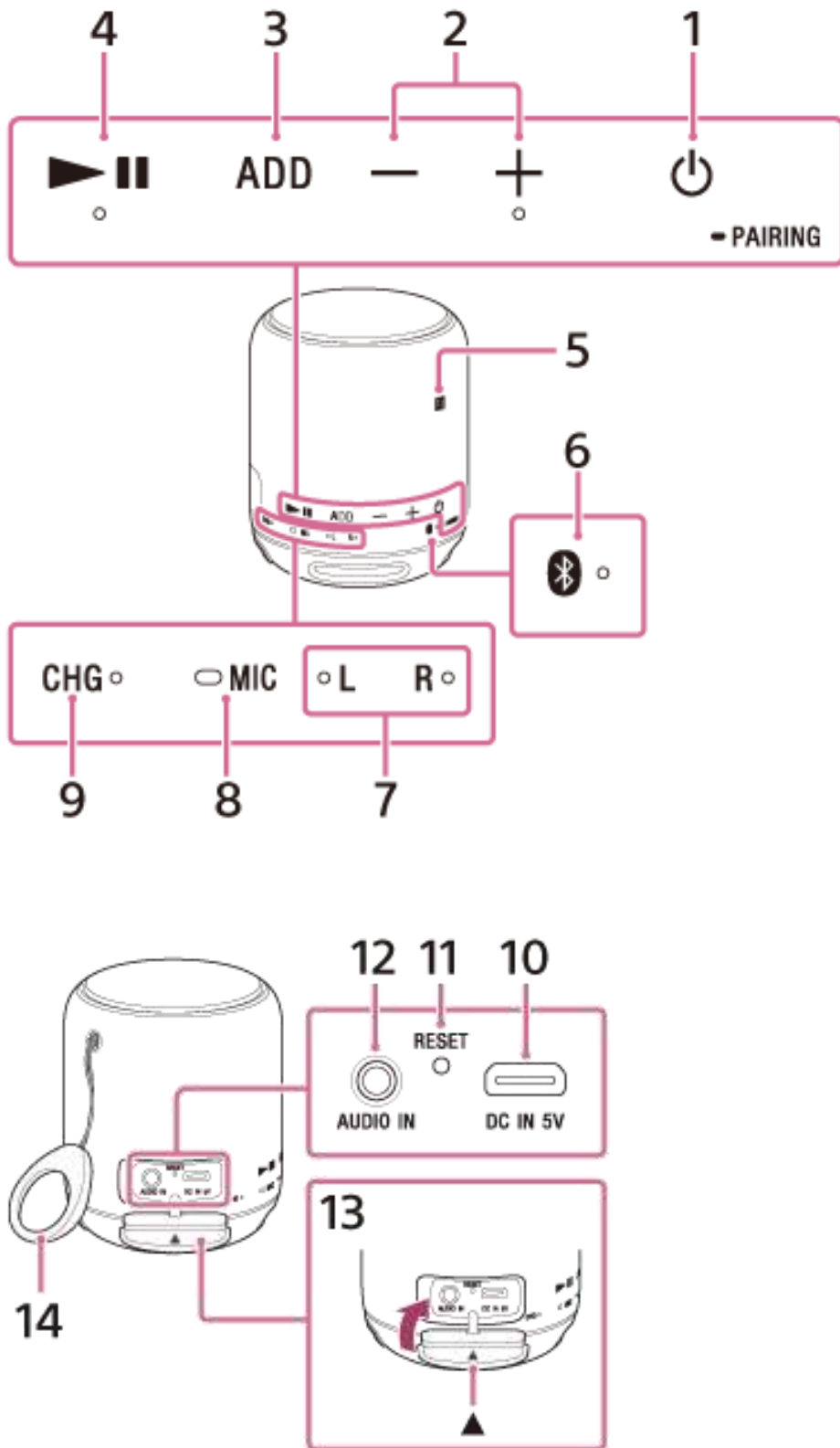
<sup>\*3</sup>When using a specified music source, sending music at the maximum volume level from a BLUETOOTH device, and setting the volume level of the speaker to 10. If the volume level of the speaker is set to maximum, the usage life will be approx. 5 hours.





<sup>\*4</sup>Requires that the cap is fastened securely.

<sup>\*5</sup>The supplied accessories are not water resistant.

<sup>\*6</sup>IPX5 (Degree of protection against jets of water): The system has been tested and found to remain functional after exposure to direct jet streams of water using a nozzle of 6.3 mm (about 1/4 in) internal diameter from any direction where approximately 12.5 L/ min of water is applied for a period of more than 3 minutes from a distance of about 3 meters (about 10 ft).

## Parts and controls



1.  (power)  PAIRING button
2. -/+ (volume) buttons
3. ADD button
4.  (play) button
5. N-mark
6.  (BLUETOOTH) indicator
7. L (left)/R (right) indicators
8. MIC (microphone)
9. CHG (charge) indicator
10. DC IN 5V jack
11. RESET button
12. AUDIO IN jack
13. Cap
14. Strap

## About the indicators

### CHG (charge) indicator (orange)

Turns off      Charging the speaker is completed.

Lights up      The speaker is being charged.

Flashes slowly The built-in battery is running low and needs to be charged.

#### Note

- A speaker that is in use can be charged if it is connected to a booted computer or AC outlet via a USB AC adapter (not supplied). In this case, it may take longer to charge the battery depending on the conditions of use. Therefore, it is recommended to turn off the speaker when charging.
- When you use the speaker at a loud volume for a long time, the battery may run low even if the speaker is connected to a booted computer or AC outlet via a USB AC adapter. As a result, sound becomes low. This is not a malfunction. Turn off the speaker and charge the battery sufficiently.
- If charging takes a long time, it makes charging of the speaker stop. In these conditions, the CHG (charge) indicator keeps flashing in orange quickly, but this is not a malfunction. To resolve these issues, disconnect the USB cable from the speaker and connect it again within the operating temperature between 5 °C and 35 °C (41 °F and 95 °F).

### (BLUETOOTH) indicator

Lights up      The speaker is connected to a BLUETOOTH device.

Flashes quickly (3 times a second)	The speaker enters the pairing mode.
Flashes slowly	The speaker is searching for a BLUETOOTH device to connect to.
Flashes once	Each time you press the -/+ (volume) button, the indicator flashes once.
Flashes 3 times	When you operate the -/+ (volume) button and the volume is set at the lowest or highest level, the indicator flashes 3 times.

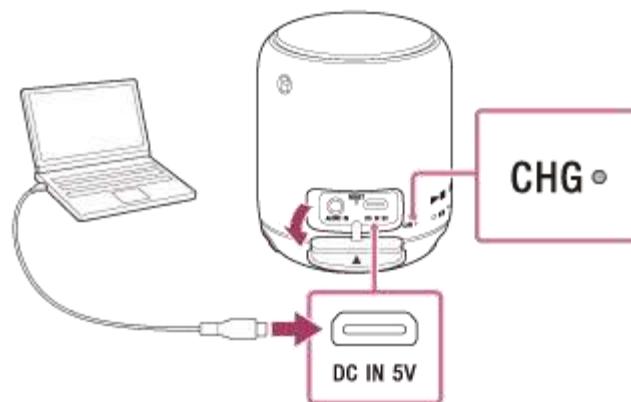
## L/R indicators

Lights up	The speaker is operating as the left speaker while the stereo mode of the Speaker Add function is enabled.
	The speaker is operating as a monaural speaker while the double mode of the Speaker Add function is enabled.

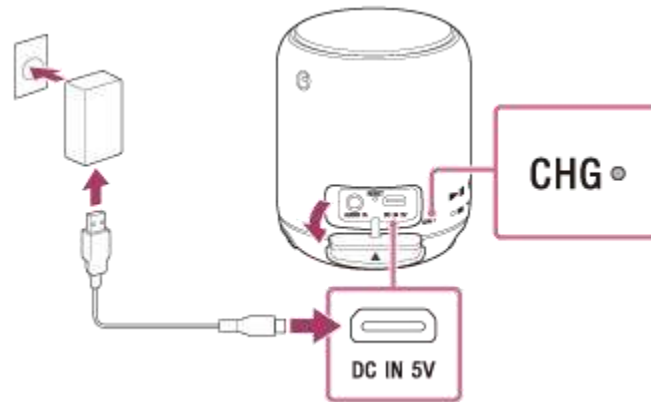
## Charging the speaker

The speaker contains a rechargeable lithium ion battery which should be charged more than 1 hour before using the speaker for the first time.

1. Make sure that the speaker is turned off.
2. Connect the speaker to a booted computer or AC outlet to charge.
  - When charging from a booted computer  
Connect the micro-USB cable (supplied) to the speaker, then connect the other end to a booted computer.



- When charging from an AC outlet  
Connect the micro-USB cable (supplied) to the speaker, connect the other end to a USB AC adaptor (not supplied), then plug the USB AC adaptor to an AC outlet.



3. The CHG (charge) indicator lights up in orange while charging. When connecting the speaker to a USB device which has the ability to output in 500 mA, the charging time is about 4 hours and 30 minutes<sup>\*1</sup>. The time may vary depending on the ambient temperature or conditions of use.
4. The CHG (charge) indicator will turn off when charging has ended.
5. If the CHG (charge) indicator stays turned off when the speaker power is off and connected to a USB device, the built-in lithium ion battery is fully charged. Once the battery is fully charged, it will not be charged further even if the speaker is kept connected to a USB device.
6. <sup>\*1</sup>Time that is required to charge the empty battery to its full capacity when the speaker turns off.

*Battery life (when using the BLUETOOTH connection)*

About 16 hours<sup>\*2</sup>.

The time stated above may vary depending on the ambient temperature or conditions of use.

<sup>\*2</sup> When the specified music source is used, the BLUETOOTH device is set to the maximum volume, and the volume level of the speaker is set to 10. The battery life when the volume level of the speaker is set to maximum will be 5 hours.

*When the battery is running low*

- When the CHG (charge) indicator flashes slowly in orange, the battery is running low and needs to be charged.

*Recommended system environment of computer for USB charging*

Windows® 10, Windows® 8.1, Windows® 8, Windows® 7 SP1, Mac OS X (version 10.6 - 10.12)

- Operation in all computers with the above environment is not guaranteed.
- Operation in a home-built computer is not covered by the warranty.



### *Hint*


- A speaker that is in use can be charged if it is connected to a booted computer or AC outlet via a USB AC adaptor (not supplied). In this case, it may take longer to charge the battery than compared to the speaker is turned off depending on the conditions of use. Therefore, it is recommended to turn off the speaker when charging.


### *Note*

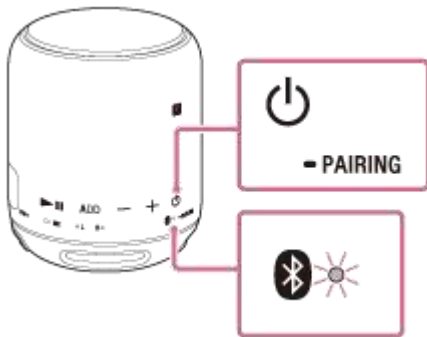
- When you use the speaker at a loud volume, the battery may run low even if the speaker is connected to a booted computer. If you want to use the speaker while charging, lower the volume of the speaker. Otherwise, turn off the speaker and charge the battery sufficiently.
- When you use the speaker at a loud volume for a long time, the battery may run low even if the speaker is connected to a booted computer. As a result, sound becomes low. This is not a malfunction. Turn off the speaker and charge the battery sufficiently.
- When you switch the power source between a booted computer/AC outlet and battery by connecting/disconnecting the USB cable, the speaker may stop sound output for a short while. This is not a malfunction.
- When using the speaker for the first time, be sure to charge the battery for more than 1 hour before turning on the power.
- In an extremely cold or hot environment, charging stops for safety. If charging takes a long time, it also makes charging of the speaker stop. In these conditions, the CHG (charge) indicator keeps flashing in orange quickly, but this is not a malfunction. To resolve these issues, disconnect the micro-USB cable and connect it again within the operating temperature between 5 °C and 35 °C (41 °F and 95 °F).
- Do not charge in places where water may splash.
- Even if you do not intend to use the speaker for a long time, charge the battery sufficiently once every 6 months to maintain its performance.

## Turning the power on

1. Press the  (power)  PAIRING button.

The  (BLUETOOTH) indicator flashes slowly in white.



When you turn on the speaker for the first time after purchase or there is no pairing information stored in the speaker, the  (BLUETOOTH) indicator will begin to flash quickly in white.



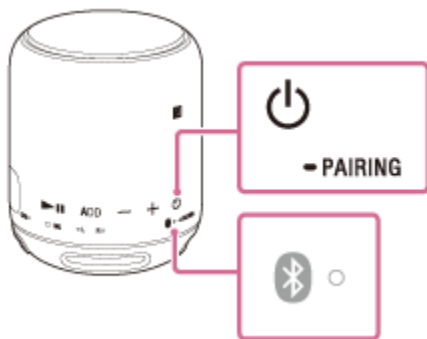
### Note

- When the CHG (charge) indicator flashes slowly in orange, the battery is running low and needs to be charged.

## Turning the power off

1. Press the  (power)  PAIRING button.

The  (BLUETOOTH) indicator turns off.



## Auto power off function

If the speaker is not connected to a BLUETOOTH device via BLUETOOTH and an audio cable is not connected to the speaker's AUDIO IN jack for 15 minutes, the speaker turns off automatically.

### *Note*

- When the speaker is connected to a BLUETOOTH device via BLUETOOTH or an audio cable is connected to the speaker's AUDIO IN jack, the auto power off function is disabled.

## How to make a wireless connection with BLUETOOTH devices

You can enjoy music and hands-free calling with the speaker wirelessly by using your device's BLUETOOTH function.

Before operating the speaker, be sure to do the following:

- Place the BLUETOOTH device within 1 m (3 ft) of the speaker.
- Connect the speaker to a booted computer or AC outlet via a USB AC adaptor (not supplied), otherwise charge the battery sufficiently.
- Stop playback on a BLUETOOTH device.
- Turn down the volume of the BLUETOOTH device and speaker to avoid any sudden loud sound output from the speaker.
- Prepare the operating instructions supplied with the BLUETOOTH device for reference.

## Pairing the speaker with a BLUETOOTH device

Pairing is the process required to mutually register the information on BLUETOOTH devices to be connected wirelessly.

It is necessary to pair a device with the speaker to be able to make a BLUETOOTH connection for the first time.

Select your situation from the following two connecting patterns. The method is the same, even when pairing a second device or more.

- [Pairing and connecting with a BLUETOOTH device](#)
- [Connecting with an NFC-compatible device by One-touch \(NFC\)](#)

## Connecting the speaker with the paired device

Once the BLUETOOTH devices are paired, there is no need to pair them again. To connect a device already paired, refer to the following topic.

- [Connecting with a paired BLUETOOTH device](#)

## Connecting the speaker with an NFC-compatible device by One-touch (NFC)

By touching the speaker with an NFC-compatible device such as a smartphone or Walkman, etc., the speaker is turned on automatically and then proceeds to pairing and making a BLUETOOTH connection. For details, refer to the following topics.

- [Connecting with an NFC-compatible device by One-touch \(NFC\)](#)
- [Disconnecting the NFC-compatible device by One-touch \(NFC\)](#)
- [Switching devices by One-touch \(NFC\)](#)

Compatible smartphones

NFC-compatible smartphones with Android™ 4.1 or later installed

Compatible Walkman models

NFC-compatible Walkman models\*

\* Even if your Walkman is compatible with the NFC function, it may not be able to make a BLUETOOTH connection with the speaker by one touch. For details on the compatible models, refer to the operating instructions supplied with the Walkman.

NFC

NFC (Near Field Communication) is a technology enabling short-range wireless communication between various devices, such as smartphones and IC tags.

Thanks to the NFC function, data communication - for example, BLUETOOTH pairing - can be achieved easily by simply touching NFC-compatible devices together (i.e., at the N-mark symbol or location designated on each device).

*Note*

- Once the BLUETOOTH devices are paired, there is no need to pair them again, except in the following cases:
  - Pairing information has been deleted after repair, etc.
  - The speaker is already paired with 8 devices and another device is to be paired.  
The speaker can be paired with up to 8 devices. If a new device is paired after 8 devices have already been paired, the paired device with the oldest connection time is replaced by the new one.
  - The pairing information of the speaker has been deleted from the BLUETOOTH device.
  - The speaker is initialized.  
All pairing information will be deleted.
- The speaker can be paired with multiple devices, but can only play music from one paired device at a time.

## Pairing and connecting with a BLUETOOTH device

The speaker can be paired with up to 8 BLUETOOTH devices.

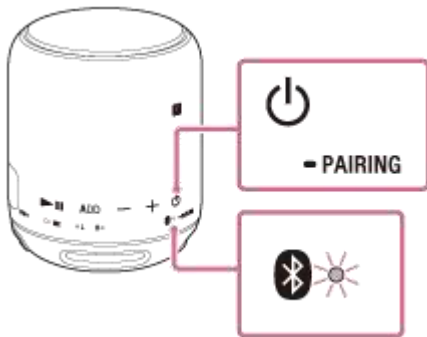
When pairing with two or more BLUETOOTH devices, perform the following pairing procedure for each device.




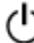
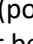

Before operating the speaker, be sure to do the following:

- Place the BLUETOOTH device within 1 m (3 ft) of the speaker.
- Connect the speaker to a booted computer or AC outlet via a USB AC adaptor (not supplied), otherwise charge the battery sufficiently.
- Stop playback on a BLUETOOTH device.
- Turn down the volume of the BLUETOOTH device and speaker to avoid any sudden loud sound output from the speaker.
- Prepare the operating instructions supplied with the BLUETOOTH device for reference.

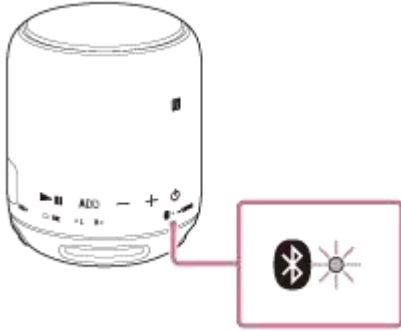
1. Turn on the speaker.

The  (BLUETOOTH) indicator begins to flash in white.



- When you turn on the speaker for the first time after purchase, the  (BLUETOOTH) indicator will begin to flash quickly in white and the speaker enters pairing mode automatically by just turning on the speaker. Proceed to step .
  - When you turn on the speaker, the speaker tries to make a BLUETOOTH connection with the last connected BLUETOOTH device. If the device is nearby and its BLUETOOTH function is on, the BLUETOOTH connection is established automatically and the  (BLUETOOTH) indicator stays lit. When you want to connect another BLUETOOTH device, terminate the current BLUETOOTH connection by operating the currently connected BLUETOOTH device.
2. Press and hold the  (power)  - PAIRING button until you hear beeps and the  (BLUETOOTH) indicator begins to flash quickly in white.

The speaker enters pairing mode.




3. Perform the pairing procedure on the BLUETOOTH device to detect the speaker.

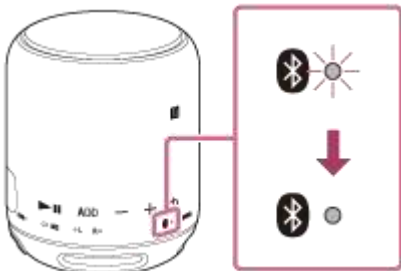
When a list of detected devices appears on the display of the BLUETOOTH device, select “SRS-XB10.”

If a passkey\* is required on the display of the BLUETOOTH device, enter “0000.”

\*A passkey may be called “Passcode,” “PIN code,” “PIN number” or “Password.”

4. Make the BLUETOOTH connection from the BLUETOOTH device.

When the BLUETOOTH connection is established, the  (BLUETOOTH) indicator stays lit.



If the BLUETOOTH connection is not established, repeat from step **2** .

#### *Hint*


- For details on operating a BLUETOOTH device, refer to the operating instructions supplied with the BLUETOOTH device.

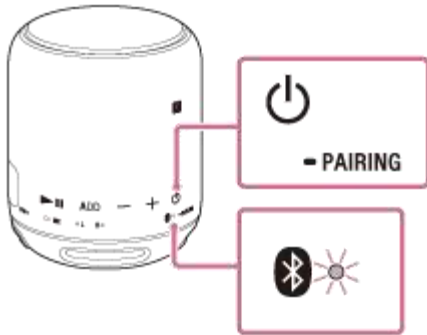
## **Connecting with a paired BLUETOOTH device**


Check the following before you operate the speaker.

- If the speaker was previously paired with a different device, turn off the BLUETOOTH function for the other device.


1. Turn on the speaker.

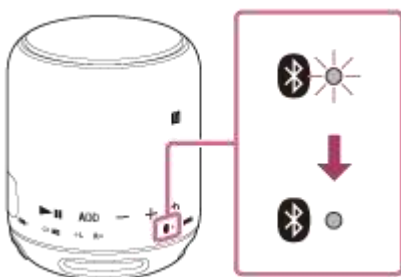
The  (BLUETOOTH) indicator begins to flash in white.



When you turn on the speaker, the speaker tries to make a BLUETOOTH connection with the last connected BLUETOOTH device. If the device is nearby and its BLUETOOTH function is on, the BLUETOOTH connection is established automatically and the  (BLUETOOTH) indicator stays lit. When you want to connect another BLUETOOTH device, terminate the current BLUETOOTH connection by operating the currently connected BLUETOOTH device.

2. Make the BLUETOOTH connection from the BLUETOOTH device.

When the BLUETOOTH connection is established, the  (BLUETOOTH) indicator stays lit.



#### Hint

- If the devices cannot connect, enter pairing mode to connect.  
(The speaker can be paired with up to 8 devices. If the speaker is paired with multiple devices, it is necessary to enter pairing mode to connect.)

### Note

- When the speaker made a connection automatically with the last connected BLUETOOTH device, the BLUETOOTH function may not work properly. In this case, terminate the BLUETOOTH connection by operating the connected BLUETOOTH device and reestablish a connection.

## Connecting with an NFC-compatible device by One-touch (NFC)

By touching the speaker with an NFC-compatible device such as a smartphone, the speaker turns on automatically, then proceeds to pairing and BLUETOOTH connection.

### Compatible smartphones

NFC-compatible smartphones with Android 4.1 or later installed

### Compatible Walkman models

NFC-compatible Walkman models<sup>\*1</sup>

<sup>\*1</sup> Even if your Walkman is compatible with the NFC function, it may not be able to make a BLUETOOTH connection with the speaker by One-touch. For details on the compatible models, refer to the operating instructions supplied with the Walkman.

### NFC

NFC (Near Field Communication) is a technology enabling short-range wireless communication between various devices, such as smartphones and IC tags.

Thanks to the NFC function, data communication - for example, BLUETOOTH pairing - can be achieved easily by simply touching NFC-compatible devices together (i.e., at the N-mark symbol or location designated on each device).

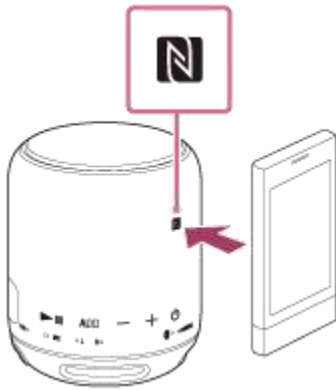
Do the following before starting.

- Turn down the volume of the device.
  - Stop playback on the BLUETOOTH device to avoid sudden loud sound output from the speaker.
1. Set the NFC function of the device to on.
  2. Touch the speaker with the device.


Unlock the screen of the device beforehand.

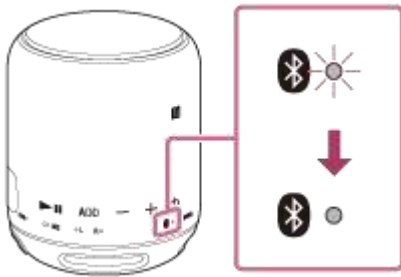
Keep touching the device on the N marked part of the speaker until the device responds (it may take a few seconds).

If the speaker is off, it will turn on when the device touches it.





Follow the on-screen instructions to establish the connection.

When the BLUETOOTH connection is established,  (BLUETOOTH) indicator stays lit.



To disconnect, touch the speaker with the device again.

#### Hint

- Even if the speaker is not turned on, the  (BLUETOOTH) indicator flashes when touching with a device. When the connection is established, the  (BLUETOOTH) indicator lights up in white.
- If you cannot connect the speaker, try the following.
  - Move the device over the N-mark part of the speaker slowly.
  - If the device is in a case, remove the case.
- If you touch a device on the speaker, the device terminates the BLUETOOTH connection with the current device (NFC-compatible headset, etc.), and connects with the speaker (One-touch connection switching).

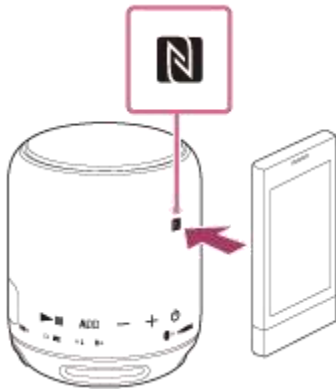
#### Note

- If your device is a type that goes into standby mode in response to magnetic force, it may not be able to be connected by NFC.

## Disconnecting the NFC-compatible device by One-touch (NFC)

You can disconnect the speaker from the connected NFC-compatible device such as a smartphone or Walkman, etc. by touching the speaker with it.

1. Touch the device on the N marked part of the speaker.



### Hint

- After the speaker is disconnected from the device by One-touch, if no operation is performed and no sound is input for 15 minutes, the speaker turns off automatically by the auto power off function.
- If you cannot disconnect the speaker, try the following.
  - Move the device slowly over the N marked part of the speaker.
  - If the device is in a case, remove the case.

## Switching devices by One-touch (NFC)

- If you move an NFC-compatible device over the N marked part of the speaker while the speaker has been connected with the other BLUETOOTH device, the speaker disconnects from the BLUETOOTH device, then connects with the NFC-compatible device that was just touched. However, if you are talking on a BLUETOOTH mobile phone connected to the speaker, you cannot switch the BLUETOOTH connection by One-touch.
- When you touch an NFC-compatible device that has been connected with the speaker via the BLUETOOTH connection on another NFC-compatible BLUETOOTH headset or BLUETOOTH speaker, the NFC-compatible device disconnects from the speaker and connects with the BLUETOOTH device it just touched.
- If you cannot switch devices, try the following.
  - Move the NFC-compatible device slowly over the N marked part of the speaker.
  - If the NFC-compatible device is in a case, remove the case.

## Pairing and connecting with a computer (Windows 10)

Pairing is the process required to mutually register the information on BLUETOOTH devices to be connected wirelessly.

It is necessary to pair a device with the speaker to be able to make a BLUETOOTH connection for the first time. Perform same procedures to pair to other devices.

Do the following before starting.


- Make sure that your computer has the BLUETOOTH wireless function.
- Place your computer within 1 m (3 ft) of the speaker.
- Connect the speaker to a booted computer or AC outlet via a USB AC adaptor (not supplied), otherwise charge the battery sufficiently.
- Locate the operating instructions supplied with the computer for reference.
- Stop playback on the computer.
- Turn down the volume of the computer and speaker to avoid any sudden loud sound output from the speaker.
- Depending on your computer, you need to turn on the built-in BLUETOOTH adaptor. If you do not know how to turn on the BLUETOOTH adaptor or if you are unsure whether your computer has the built-in BLUETOOTH adaptor, refer to the operating instructions of the computer.
- Set the speaker setting on the computer to on. If the mute (off) mode is set in the speaker's setting on the computer, the speaker will not output sound.
  - If the speaker setting on the computer is in mute (off) mode



- If the speaker setting on the computer is in on mode




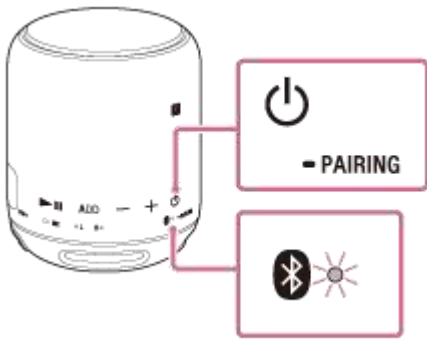
1. Prepare to search for the speaker on the computer.




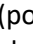

Select [  (Action Center) ] – [Bluetooth] in the taskbar on the right-bottom of the screen.



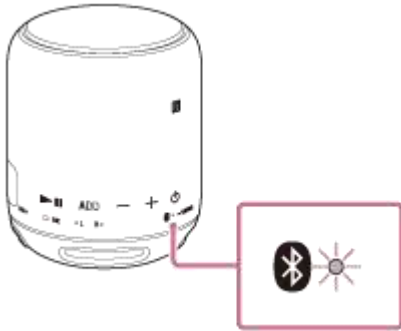
2. Turn on the speaker.

The  (BLUETOOTH) indicator flashes in white.

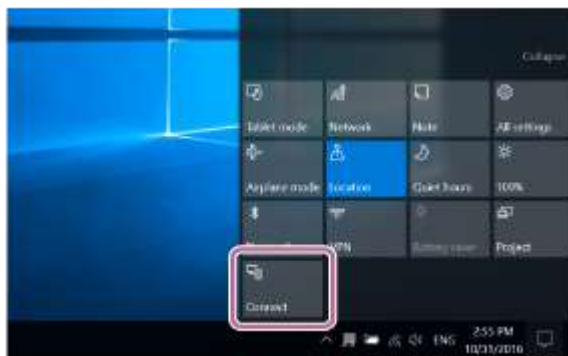


- When you turn on the speaker for the first time after purchase, the  (BLUETOOTH) indicator will begin to flash quickly in white and the speaker enters pairing mode automatically by just turning on the speaker. Proceed to step **4**.
  - When you turn on the speaker, the speaker tries to make a BLUETOOTH connection with the last connected BLUETOOTH device. If the device is nearby and its BLUETOOTH function is on, the BLUETOOTH connection is established automatically and the  (BLUETOOTH) indicator stays lit. When you want to connect another BLUETOOTH device, terminate the current BLUETOOTH connection by operating the currently connected BLUETOOTH device.
3. Press and hold the  (power)  button until you hear beeps and the  (BLUETOOTH) indicator begins to flash quickly in white.

The speaker enters pairing mode.



4. Search for the speaker on the computer.
  1. Select [Connect] in the Action Center on the right-bottom of the screen.




2. Select [SRS-XB10].




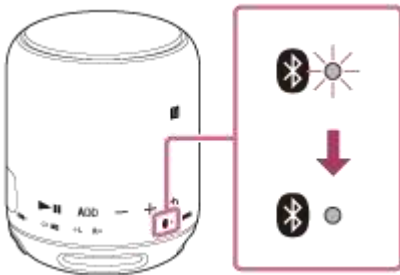
If [SRS-XB10] does not appear on the screen, repeat the procedure from step **3**.

After pairing, the BLUETOOTH connection establishes automatically and [Connected music] will be displayed on the screen.



5. Check that the  (BLUETOOTH) indicator has switched from flashing to a steady light.



When the speaker is connected to the computer, the  (BLUETOOTH) indicator stays lit. You can enjoy playing back music from your computer.



#### Hint

- The procedure explained above is for guidance only. For details, refer to the operating instructions supplied with the computer.
- You can perform pairing or connect to another BLUETOOTH device even when a BLUETOOTH connection is established. In this case, the previous connection will be disconnected.
- If your computer does not have the BLUETOOTH function, it will be necessary to connect a commercially available BLUETOOTH adaptor to the computer.

#### Note

- The pairing mode of the speaker is released after about 1 minute and the  (BLUETOOTH) indicator flashes slowly. However, when pairing information is not stored in the speaker, such as at the factory settings, the pairing mode is not released. If the pairing mode is released before finishing the process, repeat from step .
- Once BLUETOOTH devices are paired, there is no need to pair them again, except in the following cases:
  - Pairing information has been deleted after repair, etc.
  - The speaker is already paired with 8 devices and another device is to be paired. The speaker can be paired with up to 8 devices. If a new device is paired after 8 devices have already been paired, the paired device with the oldest connection time is replaced by the new one.

- The pairing information with the speaker has been deleted from the BLUETOOTH device.
- The speaker is initialized.  
All pairing information will be deleted. If you initialize the speaker, it may not be able to connect your iPhone/iPod touch or computer. In this case, erase the pairing information of the speaker on your iPhone/iPod touch or computer, and then perform the pairing procedure again.
- The speaker can be paired with multiple devices, but can only play music from one paired device at a time.
- The passkey of the speaker is “0000.” If a passkey besides “0000” is set on the BLUETOOTH device, pairing cannot be done with the speaker.

## **Unable to turn on the speaker or charge the built-in battery**

- Charge the built-in battery.
- Make sure the micro-USB cable is firmly connected to the speaker and booted computer.
- When using a USB AC adaptor (not supplied), make sure the micro-USB cable is firmly connected to the speaker and the USB AC adaptor. In addition, make sure the USB AC adaptor is firmly connected to an AC outlet.
- When using a USB AC adaptor (not supplied), make sure the USB AC adaptor has the ability to output in 500 mA or more. Charging from a USB AC adaptor which has the ability to output in less than 500 mA is not guaranteed.

## **The power suddenly turns off**

- The battery may be running low. Charge the speaker by connecting the speaker to a booted computer or an AC outlet via a USB AC adaptor (not supplied).

## **No sound/Sound from only one speaker/Low sound level/Distorted sound/Humming or noise in the speaker output/No voice or low voice from callers**





- Check that both the speaker and the connected device are turned on.
- Turn up the volume of the speaker and the connected device.
- Check that the connected device is playing.
- Make sure the audio cable is firmly connected to the AUDIO IN jack during playback in AUDIO IN mode.
- If you are connecting a computer to the speaker, make sure the audio output setting of the computer is set for a BLUETOOTH device.
- Check that the speaker has established BLUETOOTH connection with the BLUETOOTH device.
- Pair the speaker and the BLUETOOTH device again.
- If the connected device has an equalizer function, set it to off.
- Keep the speaker away from a microwave oven, Wi-Fi, etc.
- Bring the speaker and the BLUETOOTH device closer together. Remove any obstacles between the speaker and the BLUETOOTH device.

- If the CHG (charge) indicator is flashing in orange, turn off the speaker and charge the battery sufficiently.
- The device with a built-in radio or tuner cannot be connected to the speaker via BLUETOOTH since noise may occur in broadcasts.
- Locate the speaker farther away from a TV, radio or tuner, etc. since noise may occur in broadcasts.
- When using the Speaker Add function, if any other BLUETOOTH device(s) such as a BLUETOOTH mouse or BLUETOOTH keyboard is connected to the BLUETOOTH device, terminate the connection between them.
- When listening to music, select an A2DP BLUETOOTH connection by operating the BLUETOOTH device.
- When receiving/making a phone call, select an HFP or HSP BLUETOOTH connection by operating the BLUETOOTH device.
- When receiving/making a phone call, check that output of the BLUETOOTH device is set for the speaker.

## Sound becomes low while in use

- The sound may become low in the following cases. This is not a malfunction.
  - When the battery is running low and the CHG (charge) indicator flashes in orange while the speaker is being powered by the built-in battery only.
  - When the battery is running low as a result of using the speaker at a loud volume for a long time even if the speaker is connected to a booted computer or AC outlet via a USB AC adaptor (not supplied).
- If the sound becomes low while in use, follow the procedure below.
  1. Turn off the speaker.
  2. Charge the battery sufficiently.

## Unable to pair the speaker with a BLUETOOTH device

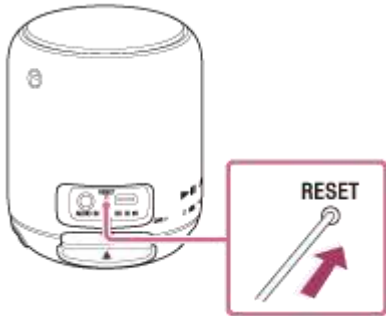
- Bring the speaker and the BLUETOOTH device to within 1 m (3 ft) of each other.
- If the  (BLUETOOTH) indicator is not flashing quickly in white, press and hold the  (power)  until you hear beeps and the  (BLUETOOTH) indicator begins to flash quickly in white.
- Connect the speaker to a booted computer or AC outlet via a USB AC adaptor (not supplied). Otherwise, charge the battery of the speaker sufficiently.
- Once the speaker is initialized, an iPhone/iPad/iPod touch may not be able to connect to the speaker. In this case, delete pairing information on the iPhone/iPad/iPod touch then pair them again.

## Unable to connect the speaker to a BLUETOOTH device with One-touch connection (NFC)

- Keep the NFC-compatible device close to the speaker until the device reacts. If you fail to connect, move the device slowly over the N marked part of the speaker.
- Check that the NFC function of the device is set to on.
- If the device is attached with a case, remove it.
- NFC reception sensitivity varies depending on the device. If you repeatedly fail to connect the speaker with a device by one touch, connect/disconnect it to the speaker by on-screen operation.
- Check that your device is compatible with NFC. Look up information on the issue on the customer support website.

## Using the RESET button

If the speaker cannot be turned on or cannot be operated despite it being turned on, open the cap on the rear side and push the RESET button for about 2 seconds with a pin or other pointed objects.





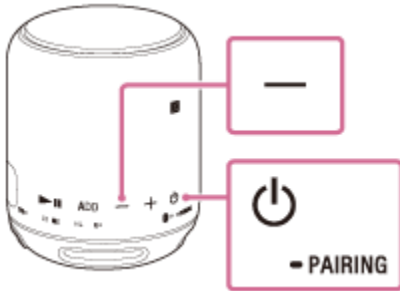
After pushing the RESET button, turn on the speaker. If it does not turn on, consult your nearest Sony dealer.

### *Note*

- The speaker cannot be reset while the power is off.
- Pairing information is not deleted by pushing the RESET button. This is different from the speaker initialization.
- After resetting, the volume and function settings may be different.

## Initializing the speaker

With the speaker turned on, press and hold the – (volume) button and the  (power)  PAIRING button at the same time for more than 5 seconds until the speaker turns off.



The speaker is initialized. Settings such as volume, etc., are restored to the factory default settings, and all pairing information is deleted.