

Signal Booster Installation Guide

4G LTE 700

Band 13, 70 dB
Adjustable Gain
In-Building Wireless 700 MHz
Smart Technology II™
Signal Booster



Contents:

Antenna Options & Accessories	1
Quick Install Overview	2
Installation Diagram	3
Before Getting Started	4
Outside Antenna Installation	6
Installing the Inside Antenna	8
Installing a Wilson Electronics Signal Booster	9
Powering up a Wilson Electronics Signal Booster	10
Finding the Strongest Signal	11
Understanding the Signal Booster Lights	13
Warnings and Recommendations	15
Guarantee & Warranty	17
Specifications	Back Cover

Note: This manual contains important safety and operating information. Please read and follow the instructions in this manual. Failure to do so could be hazardous and result in damage to your Signal Booster.



Installation Instructions for the Following Wilson Electronics Signal Booster:

**4G LTE 700 Band 13, 70 dB Adjustable Gain In-Building
Wireless 700MHz Smart Technology II™ Signal Booster**

Model # 271865

FCC ID: PWO271865 IC: 4726A-271865

The term "IC" before the radio certification number signifies that Industry Canada technical specifications were met.

How it Works

Wilson Electronics Signal Boosters are bi-directional devices that deliver service levels consistent with what would be expected in areas of high cell network coverage. They amplify a weak or shadowed signal in mobile, marine, M2M and in-building applications. When using a Wilson Electronics Signal Booster in conjunction with Wilson Electronics antennas, the Outside Antenna will collect the cell tower signal and send it through the cable to the Signal Booster. The signal is then amplified and re-transmitted through the Inside Antenna into the room. Cell phones and cellular data cards in that area then communicate with the improved signal. When a cell phone or cellular device transmits, the signal is received by the Inside Antenna, amplified by the Signal Booster and broadcasted back to the cell tower through the Outside Antenna.

Inside this Package

Note: Kits may contain different accessories

AC/DC
Power
Supply



Signal
Booster

Outdoor Antenna Options

1. Yagi Antenna (301111)
2. Wide Band Directional Antenna 700 MHz - 2700 MHz (304411)
3. Wide Band Panel Antenna 700-2700 MHz (301157)



Indoor Antenna Options & Accessories

- A. Wide-Band Panel Antenna 700-2700MHz (301134 & 301135)
 - B. 50 Ohm Lightning Surge Protector with N-Connector (859902)
- Splitter options on page 9

To purchase, call Wilson Electronics Sales Department at: 800-204-4104

1

Contact Wilson Electronics Technical Support Team with any questions at 866-294-1660
or email: tech@wilsonelectronics.com. Hours: 7 am to 6 pm MST.

Quick Install Overview

See Installation Diagram on page 3. Contact Wilson Electronics Technical Support Team with any questions at 866-294-1660.

1. Select a location to install the Signal Booster that is away from excessive heat, direct sunlight, moisture and has proper ventilation. Do not place the Signal Booster in an air-tight enclosure.
2. Select a location on the roof of the building to install the Outside Antenna. Use a cell phone in test mode to find the strongest signal from the cell tower. Visit www.WilsonElectronics.com to find test mode function for your particular cell phone (see page 11).
3. Run the Outside Antenna cable to the Signal Booster and attach it to the connector labeled "Outside Antenna" on the Signal Booster. Run the Inside Antenna cable to the Signal Booster and attach it to the connector labeled "Inside Antenna" on the Signal Booster (see page 7 for more information on running cable). Lightning Surge Protection is recommended for all in-building installations (see page 6).
4. Select a location for the Inside Antenna, preferably in the center of where the signal needs to be amplified. A minimum separation distance (combined vertical/horizontal) of 20 feet is necessary for operation (see page 8). If the inside coverage is not sufficient you may need as much as 50 feet of separation. See installation diagram on pages 3 & 4.
5. Before powering up the Signal Booster, verify that both the Outside Antenna and the Inside Antenna are connected and check that all connections are tight. **Note:** *Be careful when plugging the connectors in so as not to bend the center pins on the connectors.*
6. The Signal Booster has been packaged with the gain control knobs adjusted to the highest gain position. If the 700 MHz light is not green, please refer to pages 13 & 14.



Warning: Connecting the Signal Booster directly to a cell phone with use of an adapter may damage the cell phone and the Signal Booster.

Installation Diagram

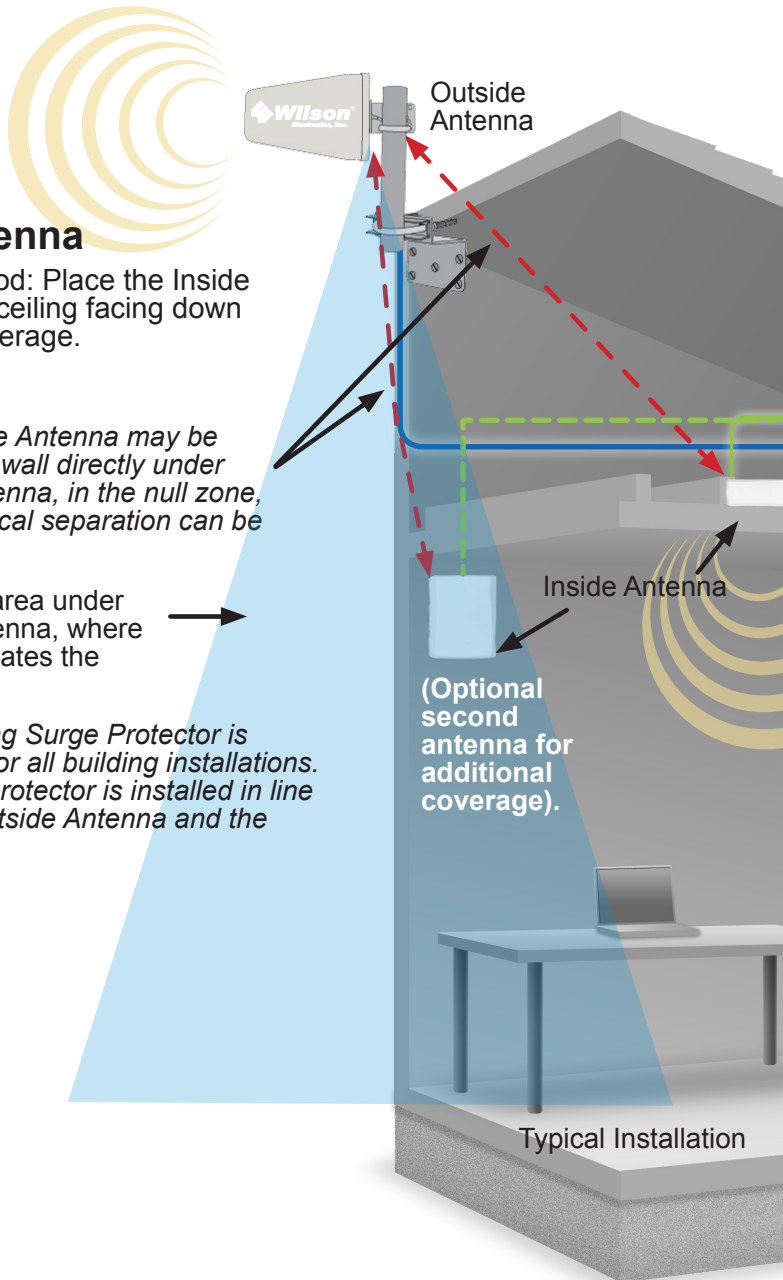
Inside Antenna

Preferred Method: Place the Inside Antenna in the ceiling facing down for the best coverage.

Note: The Inside Antenna may be mounted on the wall directly under the Outside Antenna, in the null zone, if 15 feet of vertical separation can be maintained.

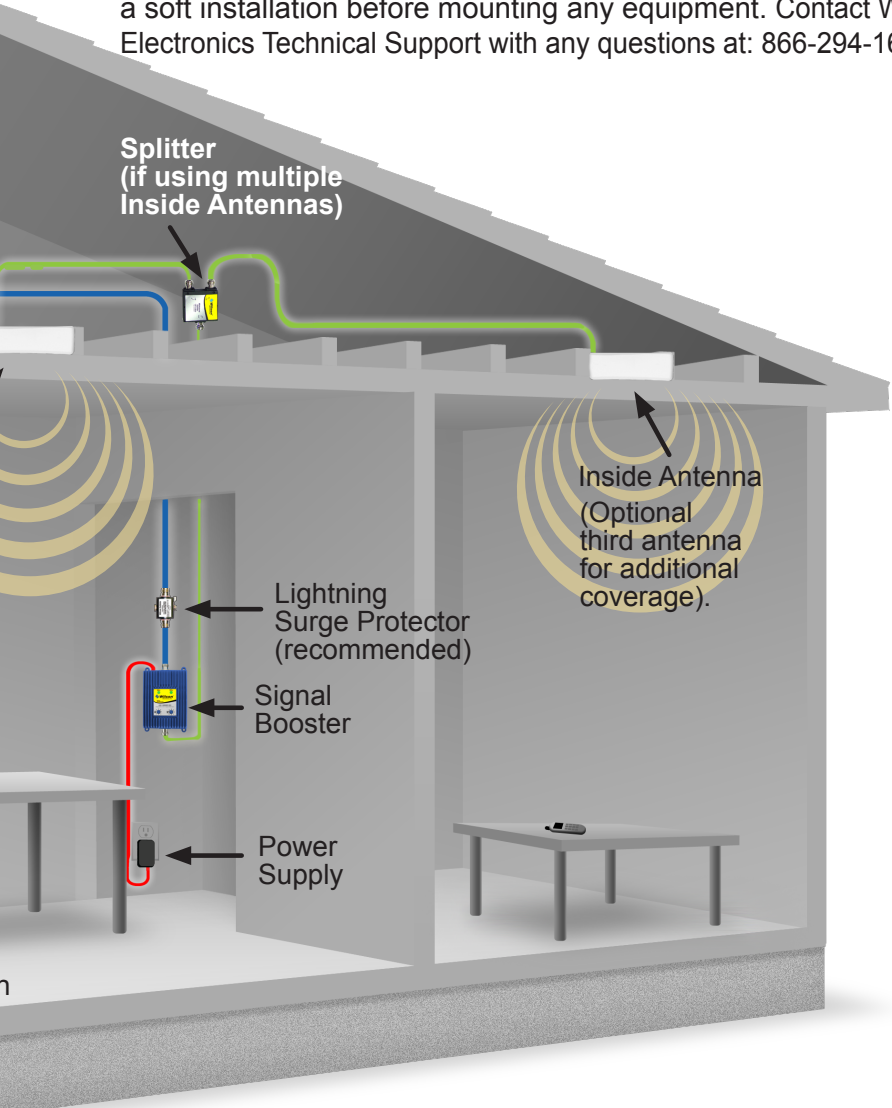
Null Zone: The area under the Outside Antenna, where the antenna radiates the least.

Note: A Lightning Surge Protector is recommended for all building installations. Make sure the protector is installed in line between the Outside Antenna and the Signal Booster.



Before Getting Started

This guide will help you properly install your Wilson Electronics Signal Booster. **It is important to read through all of the installation steps for your particular application prior to installing any equipment.** Read through the instructions, visualize where all the equipment will need to be installed and do a soft installation before mounting any equipment. Contact Wilson Electronics Technical Support with any questions at: 866-294-1660.



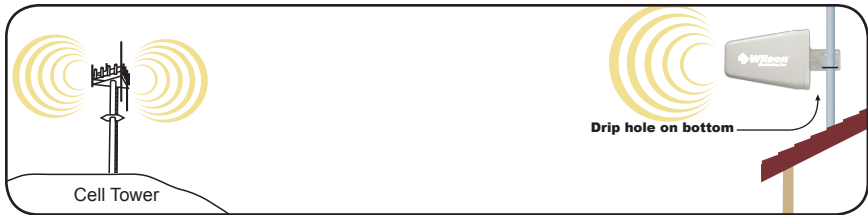
Contact Wilson Electronics Technical Support Team with any questions at 866-294-1660 or email: tech@wilsonelectronics.com. Hours: 7 am to 6 pm MST.

Reasons for Weak Cellular Signals

Anyone who uses a cell phone or cellular data card knows the frustration of not being able to connect to or maintain a strong cellular signal. When this occurs, it is generally due to one of two reasons:

1. Location of the Nearest Cell Tower – Cell towers are situated to provide broad coverage; however, there are many areas in which signal strength may be reduced by topographic features or by local government restrictions on the height or placement of the towers themselves. Rural areas generally have fewer cell towers than urban regions.
2. Natural and Man-Made Obstructions – Signal strength can also be negatively affected by trees, hills, buildings, weather, and other obstructions. You may be relatively close to a cell tower but still unable to make a call. This often occurs in homes, offices and other buildings in which stucco, concrete or metal walls may block the signal.

The Signal Booster works with two antennas. The Inside Antenna communicates with your cellular device and the Outside Antenna communicates with the cell tower. The Outside Antenna receives the cell tower signal and sends it through the cable to the Signal Booster, where it is amplified and re-transmitted much stronger through the Inside Antenna into the room. When the Inside Antenna picks up a signal from your cellular device, the Signal Booster amplifies that signal and transmits it through the cable to the Outside Antenna and back to the cell tower. **(Note: The Signal Booster will only operate if there is an adequate signal to amplify.)**



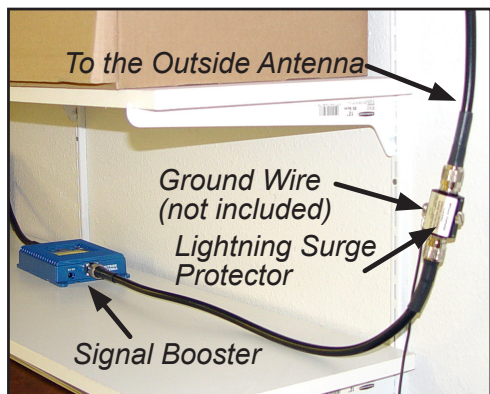
Outside Antenna Installation

The Outside Antenna should be mounted as shown in the illustration above. The mounting bracket, included with Outside Antenna, is adjustable and will accommodate pipe diameters from 1.25" to 2" (pipe sold separately Part# 901117). Mount the antenna so that there is at least 3 feet of clearance in all directions around it. Position the antenna so that it has an unobstructed line of sight to the cell tower's strongest signal. Make sure the Outside Antenna is not pointing across your own roof or at the Inside Antenna as this will cause the oscillation protection circuitry to shut down the Signal Booster.

⚠ Warning Lightning protection is recommended for all installations (sold separately) (Part #859902). Take extreme care to ensure that neither you nor the antenna comes near any electric power lines.

Installing Lightning Protection (sold separately)

Install the Lightning Surge Protector (LSP) close to the Signal Booster. Attach the cable from the Outside Antenna to the surge protector, using a short length of low loss cable; attach one end to the LSP and the other to the Outside Antenna connector on the Signal Booster. Attach a ground wire (not included) to the LSP. LSP may be purchased at www.WilsonElectronics.com or 800-204-4104.



Selecting a Direction for the Outside Antenna

Select a location on the roof of the building to install the Outside Antenna. Use a cell phone in test mode to find the strongest signal from the cell tower. See below for more information. To get the strongest signal possible, it is very important to set up your Outside Antenna properly. The Inside and the Outside Antenna must be mounted in such a way that they are able to pick up the best possible cell signal on the outside of the building and provide the best possible signal on the inside of the building. Mount the Outside Antenna as high as possible facing the cell tower in an area with the best possible signal coverage. **Note:** *Never point the front of a directional antenna toward the Inside Antenna. See Figures 1 & 2 on page 12.*

Mounting Tips for Running Outside Antenna Cable

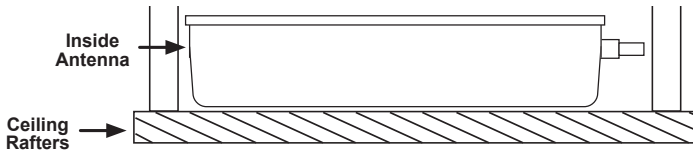
If you are mounting the Outside Antenna on the roof of your building, we have found that it is easiest to run your cable underneath the down side of your roof's flashing. If you have satellite TV service installed at your home or office, you may be able to follow the same route as the satellite TV cables that are already running from outside of your building to the inside. After routing the cable, we recommend sealing any areas where the cable passes into the building with silicone, cable bushings or other waterproof sealant to keep your installation from leaking. If you are mounting the Outside Antenna to the outside wall of your home or building, the simplest way is to run the cable on the outside of the wall and attach it to the exterior of your home or office. Then drill a hole through the wall where you want the cable to appear on the inside of the building. Before drilling, make sure that there are no electrical outlets, sewer or water pipes, or electrical wiring in the wall that you are about to drill through as this could potentially harm you or damage the building.

After drilling the required hole, run the cable through and seal it with silicone, cable bushings or other waterproof sealant to

enclose the hole that you have created. In some instances, it may be possible to run the cable up into the fascia of the attic overhang. In this circumstance, the cable will be accessible in the attic for further routing.

Installing the Inside Antenna

Find the desired location for the Inside Antenna (Panel Antenna option shown). Verify that the Inside Antenna and the Outside Antenna have the necessary separation (Minimum of 20 vertical/horizontal feet if installed with Signal Booster set at a lower gain, for maximum gain you may need as much as 50 feet of separation). For optimum results the antenna should be mounted at least 6 feet off the ground.



In some cases, multiple Inside Antennas may be required, for instance if you have multiple rooms with poor signal. A signal may be split by using a splitter (sold separately). If using more than one Inside Antenna, a separation of at least 20 feet is necessary between Inside Antennas. See configuration on pages 3 & 4.

⚠ Warning: An Inside Antenna must have a separation distance from all persons that is at least 8 inches for the panel antenna.

Optional Panel Inside Antenna (sold separately)



Splitter Options: (sold separately)



Installing a Wilson Electronics Signal Booster

Select a location to install the Signal Booster that is away from excessive heat, direct sunlight, moisture and that has proper ventilation. Do not place the Signal Booster in an air-tight enclosure. Recommended installation locations for in-building Signal Boosters are near a power outlet and in a closet, or on a shelf.

Note: *It is important to have adequate air ventilation. Maintain at least 6 inches of clearance from surrounding objects.*

Run the Outside Antenna cable to the Signal Booster and attach it to the connector labeled “Outside Antenna” on the Signal Booster. Run the Inside Antenna cable to the Signal Booster and attach it to the connector labeled “Inside Antenna” on the Signal Booster.

Note: *For distances of 20 feet or more, use Wilson low loss cable to prevent significant signal loss.*

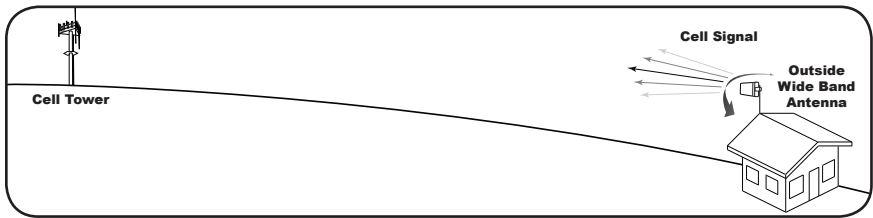
Note: *Be careful when plugging the connector in so as not to damage the center pins on the connectors.*

Powering up a Wilson Electronics Signal Booster

1. Never point the front of a Directional Outside Antenna toward the Inside Antenna. See Figures 1 & 2 on page 12.
2. Ensure that both the Outside Antenna cable and the Inside Antenna cable are connected to the Signal Booster **and the connections are tight** before powering up the Signal Booster.
3. Plug the power supply into the Signal Booster input marked “6V DC” (carefully, to avoid damaging the center pin) and then into a wall outlet.
4. If the Signal Booster does not have a green light (700 MHz) please see pages 13 & 14.
5. Using multiple Signal Boosters in one installation could cause interference to the cell tower.
6. Contact Wilson Electronics Technical Support Team with any questions at 866-294-1660 or email tech@wilsonelectronics.com. Technical Support hours are 7 am to 6 pm MST.



Finding the Strongest Signal



When installing your Signal Booster's Outside Antenna, aiming it towards the best signal source from your service provider is important. After you have completed the install, the best way of getting the strongest signal is to have one person on the roof to rotate the Outside Antenna, which is connected to the Signal Booster. Turning the Outside Antenna about 45 degrees at a time, while the second person is watching the signal strength on the phone inside the building. This allows you to read the signal strength from the cell tower. It is preferable to have the phone in the test mode so the actual signal strength can be read, as bars are not the most accurate. Go to www.WilsonElectronics.com for help in finding the test mode for your phone. Always make sure the person inside the building gives the signal time to arrive and register on the phone. (Between 10-30 seconds for phone to reset to the signal reading). Signal readings usually appear as a negative number (for example, -86). The closer you get to zero the stronger the signal. (See graph below).

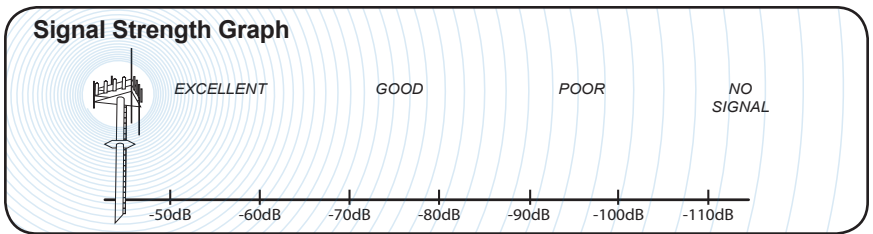


Figure 1

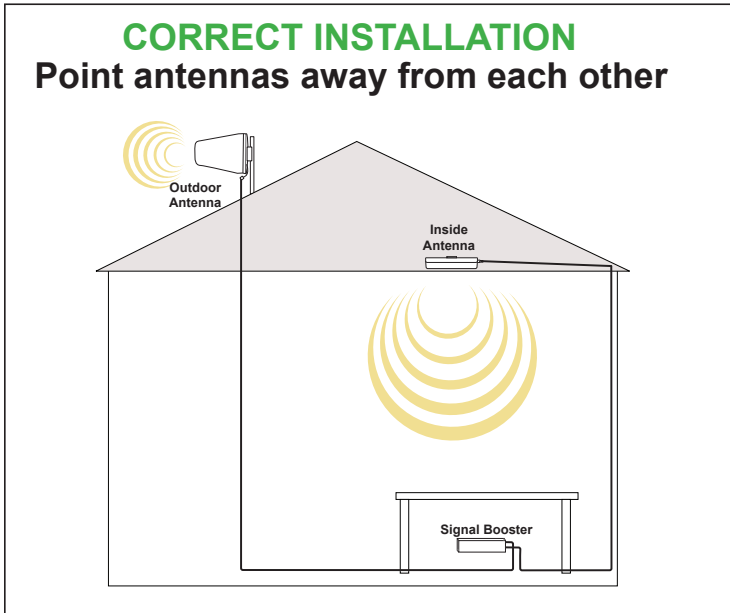
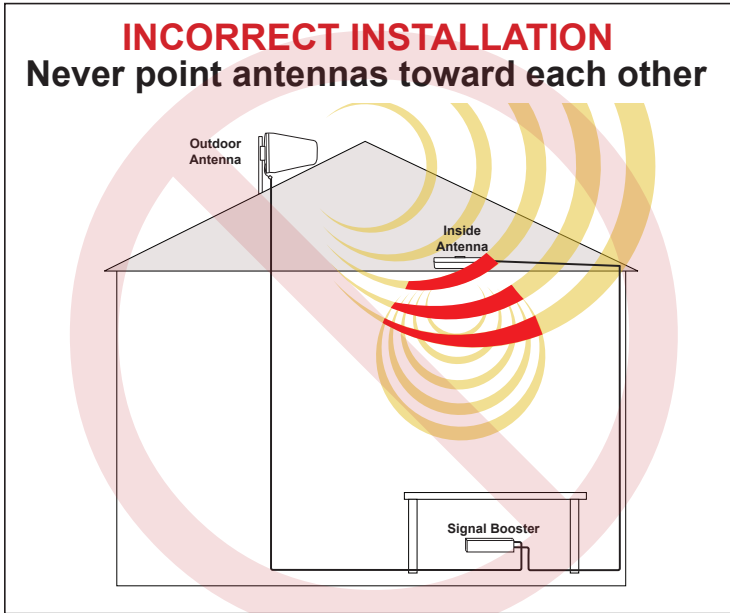


Figure 2



Understanding the Signal Booster Lights and Troubleshooting

During installation mode the Signal Booster is resetting itself very quickly to aid the installer. The Signal Booster is equipped with one indicator light for the 700 MHz band and one for the power. For the first 15 minutes that the Signal Booster is plugged in, it is programmed for a test and alignment period.



For the first 15 minutes the 700 MHz light will do one of the following 4 things:

Note: *If after the initial 15 minutes you are not done with the installation, the Signal Booster can be reset and enter installation mode again by disconnecting and reconnecting the power supply from the Signal Booster.*

1. BLINKING GREEN

If the Signal Booster 700 MHz light is blinking green, the Signal Booster is operating properly. If you are happy with the coverage area in your building, then you are done. Blinking will stop after the 15 minute installation period.

2. BLINKING ORANGE

If the 700 MHz light on the Signal Booster is blinking orange, the Signal Booster is experiencing receiver (cell tower) overload. The Signal Booster has protection shut off circuits to prevent the disruption of cell towers. If the light is blinking orange, this indicates that gain should be reduced due to close proximity to a cell tower. First, turn down the uplink (UL) gain control until you get a blinking green light. Do not adjust the downlink (DL) knob at this time. The Signal Booster is now working with reduced gain on the uplink. If the gain is not adequate for good coverage, you will need to turn the UL gain to maximum and then rotate the Outside Antenna until the light turns to blinking green, waiting 5 seconds between each adjustment for the Signal Booster to

reset. If you do not get a green light, turn the UL gain down 5 dB and rotate the Outside Antenna. Continue to adjust the UL gain and the Outside Antenna position until the light turns blinking green. If the UL gain was reduced and the light is green and you have good signal strength but are unable to place a call, it may be necessary to lower the DL gain control to the same setting as the UL. This is because some cell systems require a balanced gain between UL and DL for proper operation. Contact Wilson Electronics Technical Support Team for assistance: 866-294-1660.

3. SOLID RED

If the 700 MHz light on the Signal Booster is solid red, this indicates that the Signal Booster has shut down to prevent an oscillation (feedback). First, make sure that all the connections are tight. Then reduce the DL and the UL gain of the Signal Booster in 5 dB increments by rotating the gain control counter-clockwise, waiting 5 seconds between each adjustment for the Signal Booster to reset. Continue this adjustment until the 700 MHz light turns blinking or solid green. When you are turning down the DL gain, you are reducing the inside coverage area. If the amount of coverage area is sufficient for your needs and the 700 MHz light is green, the installation is complete. If the coverage area is not large enough, it is necessary to increase the separation distance of the Inside and Outside Antennas by moving them horizontally and/or vertically farther apart. Then increase the DL and UL gains until the red light comes on, and then decrease the gains until the green or blinking green light appears. If after separating the antennas your coverage area is still too small, contact Wilson Electronics Technical Support Team for assistance: 866-294-1660.

4. SOLID GREEN

The 700 MHz indicator light on the Signal Booster will be a solid green after the first 15 minute installation period, if the unit is powered up and working properly.



Warnings and Recommendations

- ⚠ Warning: The Directional Antenna must always be located so the back or side points to the Inside Antenna. Never point the front of the Outside Antenna toward the Inside Antenna – this is to prevent oscillation.
- ⚠ Warning: Connecting the Signal Booster directly to the cell phone with use of an adapter will damage the cell phone.
- ⚠ Warning: Use only the power supply provided. Use of a non-Wilson Electronics product may damage your equipment.
- ⚠ Warning: **RF Safety:** Any fixed Outside Antenna used with this Signal Booster may not have gain (less cable loss) that exceeds 10 dBi and must be located at least 14 inches from all people. Any Inside Antenna used with the Signal Booster may not have gain (less cable loss) that exceeds 7.6 dBi and must be located at least 8 inches from all people. The antenna options appearing in this installation guide meet these requirements.
- ⚠ Warning: Verify that both the Outside Antenna and the Inside Antenna are connected to the Signal Booster before powering up the Signal Booster.

Recommendation: *Lightning Surge Protection is recommended for all in-building installations.*



About Wilson Electronics

Wilson Electronics, Inc. has been a leader in the wireless communications industry for over 40 years. The company designs and manufactures Signal Boosters, Antennas and related components that significantly improve cellular phone signal reception and transmission in a wide variety of applications, both mobile (marine, RV, vehicles) and in-building (home, office, M2M).

With extensive experience in antenna and Signal Booster research and design, the company's engineering team uses a state-of-the-art testing laboratory, including an anechoic chamber and network analyzers, to fine-tune antenna designs and performance. For its Signal Boosters, Wilson Electronics uses a double electrically insulated RF enclosure and cell tower simulators for compliance testing.

Wilson Electronics Signal Boosters feature patented Smart Technology II™ that enables them to automatically adjust their power based on cell tower requirements. By detecting and preventing oscillation (feedback), signal overload and interference with other users, these Smart Technology II™ Signal Boosters improve network cell phone areas without compromising carrier systems.

All products are engineered and assembled in the company's 55,000-square-foot headquarters in St. George, Utah. Wilson Electronics has product dealers in all 50 states as well as in countries around the world.

30-Day Money-Back Guarantee

All Wilson Electronics products are protected by Wilson Electronics 30-day money-back guarantee. If for any reason the performance of any product is not acceptable, simply return the product directly to the reseller with a dated proof of purchase.

1-Year Warranty

Wilson Electronics Signal Boosters are warranted for one (1) year against defects in workmanship and/or materials. Warranty cases may be resolved by returning the product directly to the reseller with a dated proof of purchase.

Signal Boosters may also be returned directly to the manufacturer at the consumer's expense, with a dated proof of purchase and a Returned Material Authorization (RMA) number supplied by Wilson Electronics. Wilson Electronics shall, at its option, either repair or replace the product. Wilson Electronics will pay for delivery of the repaired or replaced product back to the original consumer if located within the continental U.S.

This warranty does not apply to any Signal Booster determined by Wilson Electronics to have been subjected to misuse, abuse, neglect, or mishandling that alters or damages physical or electronic properties.

RMA numbers may be obtained by phoning Technical Support at 866-294-1660.

Disclaimer

The information provided by Wilson Electronics, Inc. is believed to be complete and accurate. However, no responsibility is assumed by Wilson Electronics, Inc. for any business or personal losses arising from its use, or for any infringements of patents or other rights of third parties that may result from its use.



Copyright © 2011 Wilson Electronics, Inc. All rights reserved.

This device complies with part 15 of the FCC Rules. Operation is subject to the following two conditions: (1) This device may not cause harmful interference and (2) this device must accept any interference received, including interference that may cause undesired operation. Changes or modifications made that are not expressly approved by Wilson Electronics could void authority to operate this equipment.

One or more of the following U.S. Patent numbers may apply to the Signal Booster in this product – D596,614; D596,615; D563,381; 7,729,669; 7,486,929; 7,729,656; 7,409,186; 7,783,318; 7,684,838; 12,714,994.

4G LTE 700 Specifications

4G LTE 700 Specifications	
Model Number	271865
Antenna connectors	N-Female
Antenna impedance	50 ohms
Dimensions	5.7 x 4.2 x 1.5 inch (14.0 x 10.8 x 3.9 cm)
Weight	1.27 lbs (0.544 kg)
Frequency	Uplink 776 - 787 MHz / Downlink 746 - 757 MHz

*Passband Gain (nominal)	
Uplink/Downlink	70 dB Typical / 75 dB Maximum

*20 dB Bandwidth (nominal)	
Uplink (776 - 787 MHz)	Downlink 27 MHz
Downlink (746 - 757 MHz)	25 MHz

*Power Output		Uplink	Downlink
Power output for single cell phone (uplink) or single received channel (downlink)		28.7 dBm	25.5 dBm

*Power output for multiple channels		Maximum Power	
The maximum power is reduced by the number of channels:	Number of channels	Uplink	Downlink
	2	25.3 dBm	26.3 dBm
	3	18.3 dBm	18.3 dBm
	4	19.3 dBm	20.2 dBm
	5	17.4 dBm	18.3 dBm
	6	15.8 dBm	16.7 dBm

Noise Figure (typical downlink/uplink)	3.5 dB nominal / 5 dB nominal
Isolation	> 90 dB
Power Requirements	110-240 V AC, 50-60 Hz, 10 W

Notes:

1. Nominal gain is the maximum gain at any frequency in the passband.
2. Nominal bandwidth is the difference between two frequencies that are adjacent to the passband where the amplification is 20 dB lower than the passband amplification. One of the frequencies is lower than the passband and the other is higher.
3. The Manufacturer's rated output power of this equipment is for single carrier operation. For situations when multiple carrier signals are present, the rating would have to be reduced by 3.5 dB, especially where the output signal is re-radiated and can cause interference to adjacent band users. This power reduction is to be by means of input power or gain reduction and not by an attenuator at the output of the device.
4. The maximum power for 2 or more simultaneous signals will be reduced by 6 dB every time the number of signals is doubled.



3301 East Deseret Drive, St. George, UT 84790

For additional Technical Support visit www.WilsonElectronics.com

or email at: tech@wilsonelectronics.com

Phone: 866-294-1660 Local: 435-673-5021 Fax: 435-656-2432

www.twitter.com/WilsonCellular www.facebook.com/WilsonCellular