

SCHWINN®

EASY STEER TRIKE

OWNER'S MANUAL

The owner's manual contains assembly, use and maintenance instructions. The tricycle must be assembled by an adult who has read and understands the instructions in this manual. Keep the packaging away from children and dispose of all packaging before use.

Models: S6743, S6743A, S6771, S6775, S6743AZ



Keep instructions for future reference.

① Safety

WARNING!

Age Range	2 - 4 years old
Weight Range	No more than 60 lbs. (28 kgs)
Front Basket Maximum Load	5 lbs. (2 kgs)
Rear Basket Maximum Load	10 lbs (5 kgs)

ADULT ASSEMBLY REQUIRED

Choking hazard to children under the age of 3 years. Contains small parts prior to assembly.

TO AVOID SERIOUS INJURY:

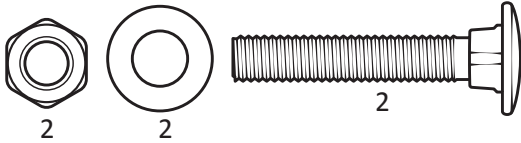
1. Children should always wear a properly fitted helmet that complies with US Consumer Product Safety Commission (CPSC) standard 16CFR 1203.
2. Continuous adult supervision required.
3. Never use near motor vehicles.
4. Do not ride at night.
5. Never use near streets, swimming pools, hills, steps or sloped driveways.

5. Do not ride in wet conditions.
6. Do not ride on rough surfaces.
7. Avoid traffic and pedestrians.
8. Excessive weight may cause hazardous or unstable conditions.
9. Always wear shoes, helmets and pads when riding the tricycle.
10. Never allow more than one rider.

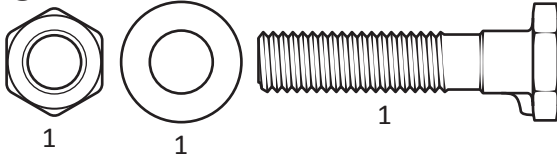
2 Parts, Hardware, Tools Required

All hardware shown at exact size. During assembly place the nut or screw required over the diagram to ensure the correct hardware is being used.

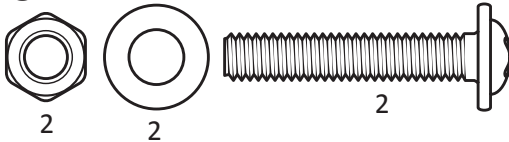
1 Main Frame and Rear Assembly Hardware



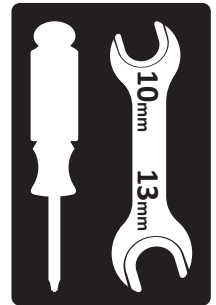
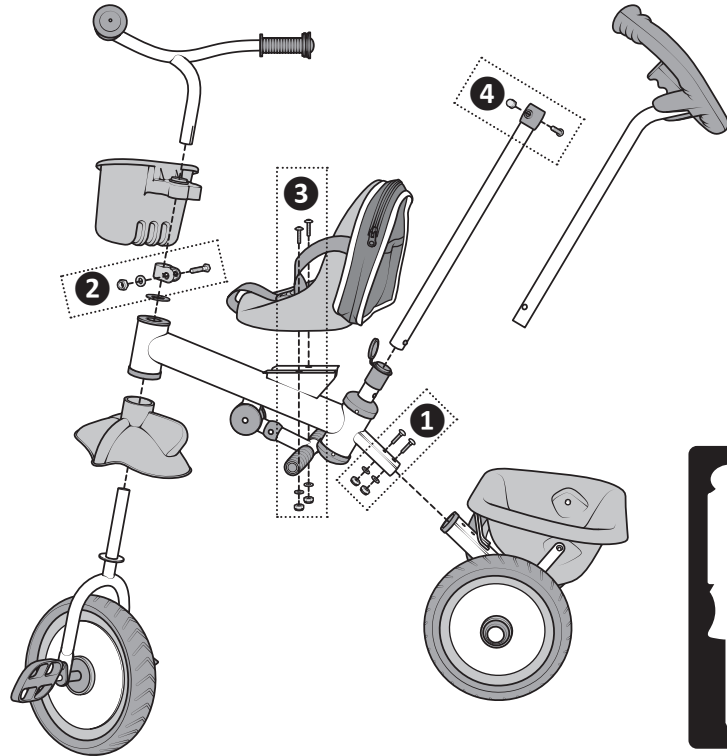
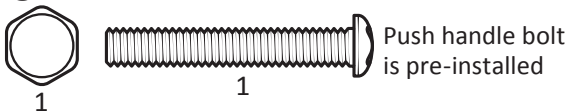
2 Handlebar Assembly Hardware



3 Saddle Assembly Hardware

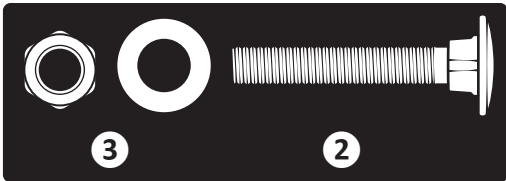
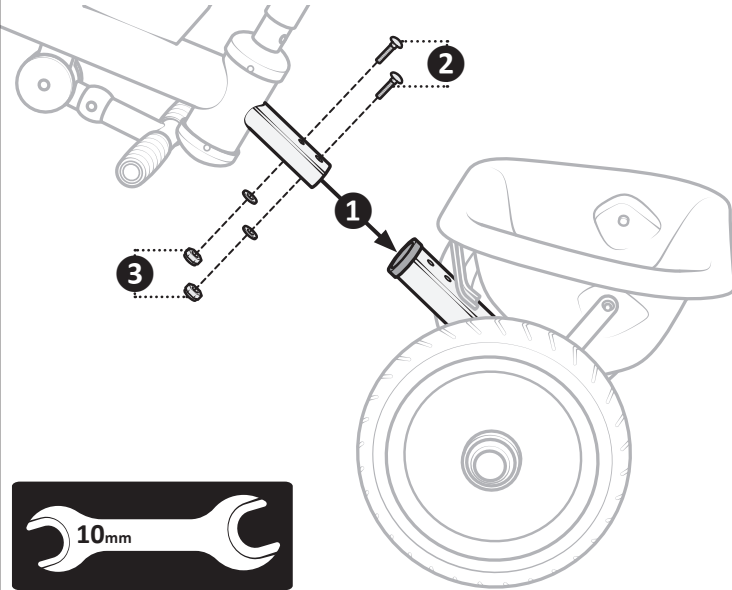


4 Push Handle Assembly Hardware

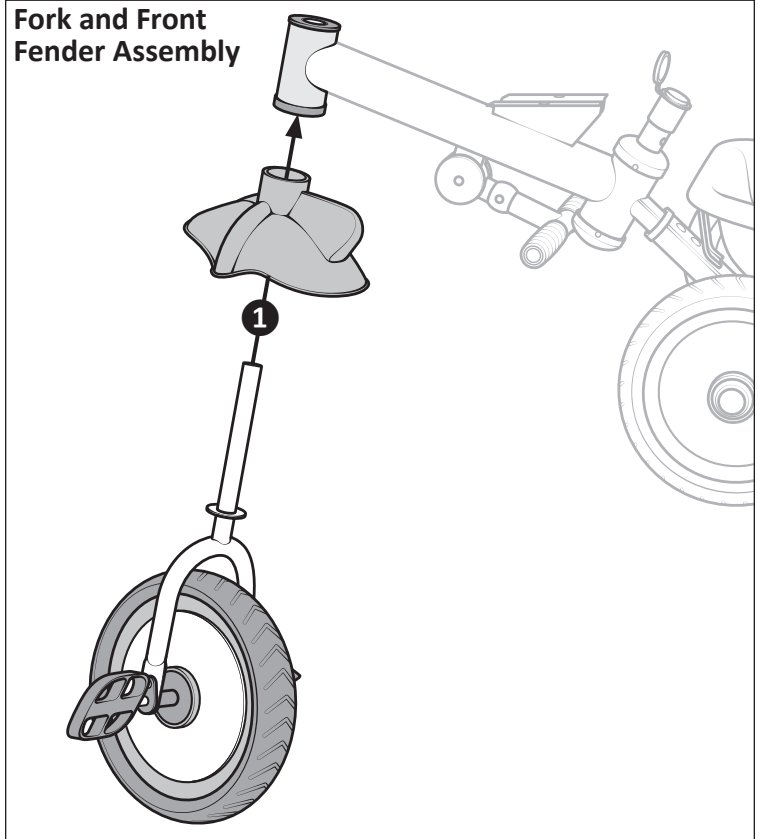


3 Assembly

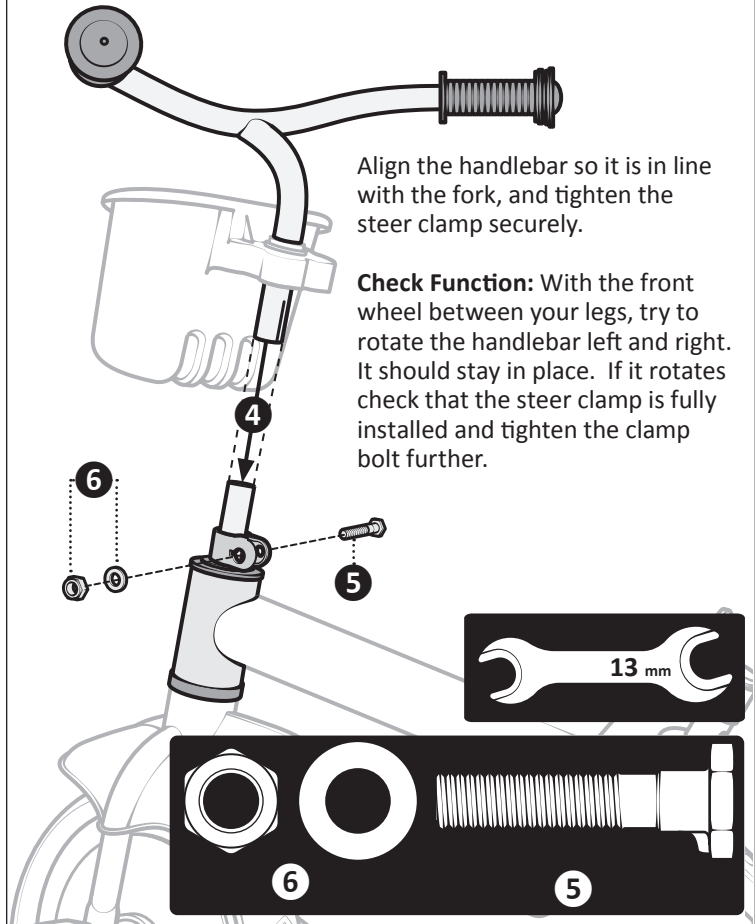
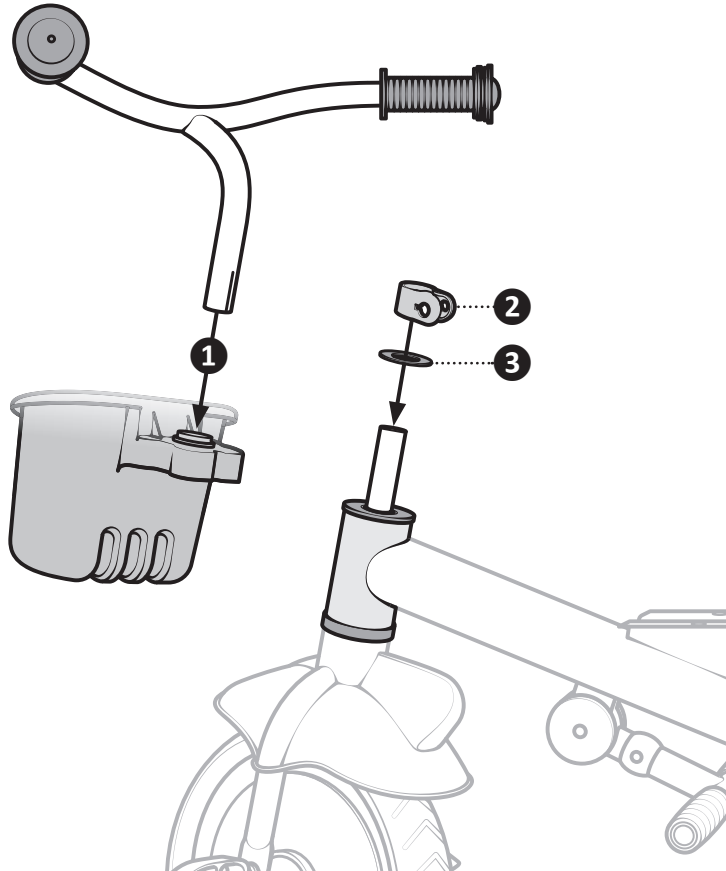
Main Frame and Rear Assembly



Fork and Front Fender Assembly



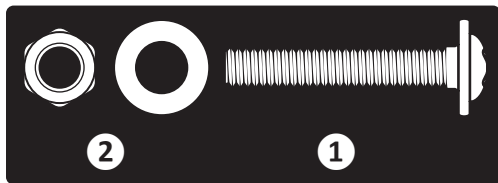
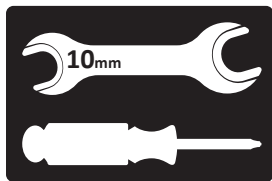
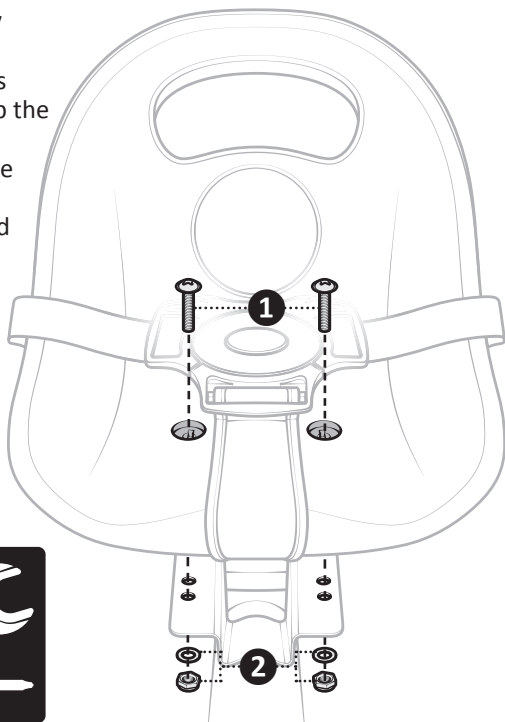
Handlebar Assembly



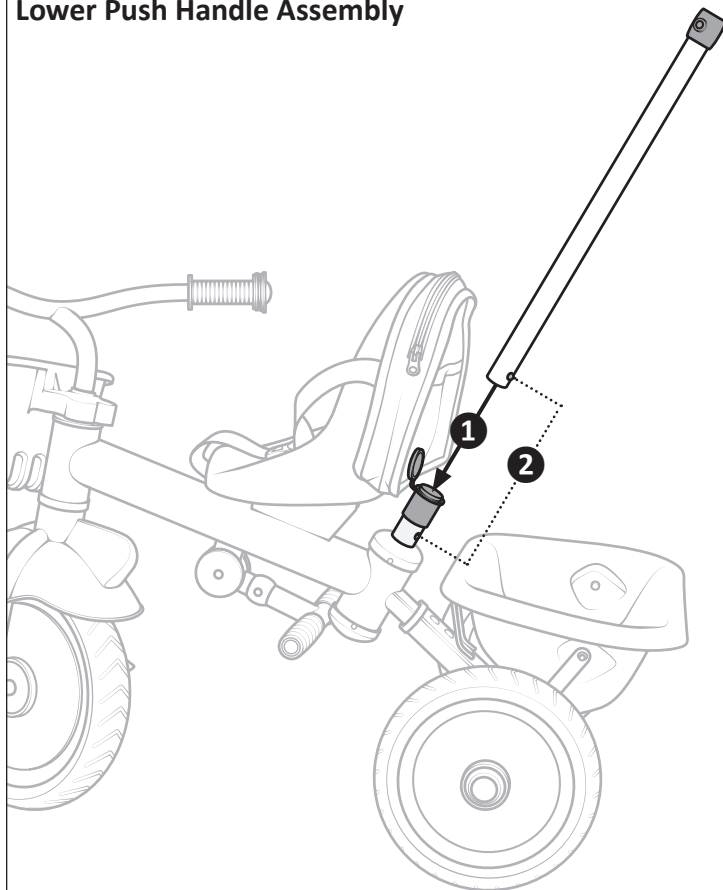
Saddle Assembly

Tighten these 2 bolts ONLY enough to stop the saddle from moving. Over tightening these bolts will eventually crush the saddle, and may cause damage.

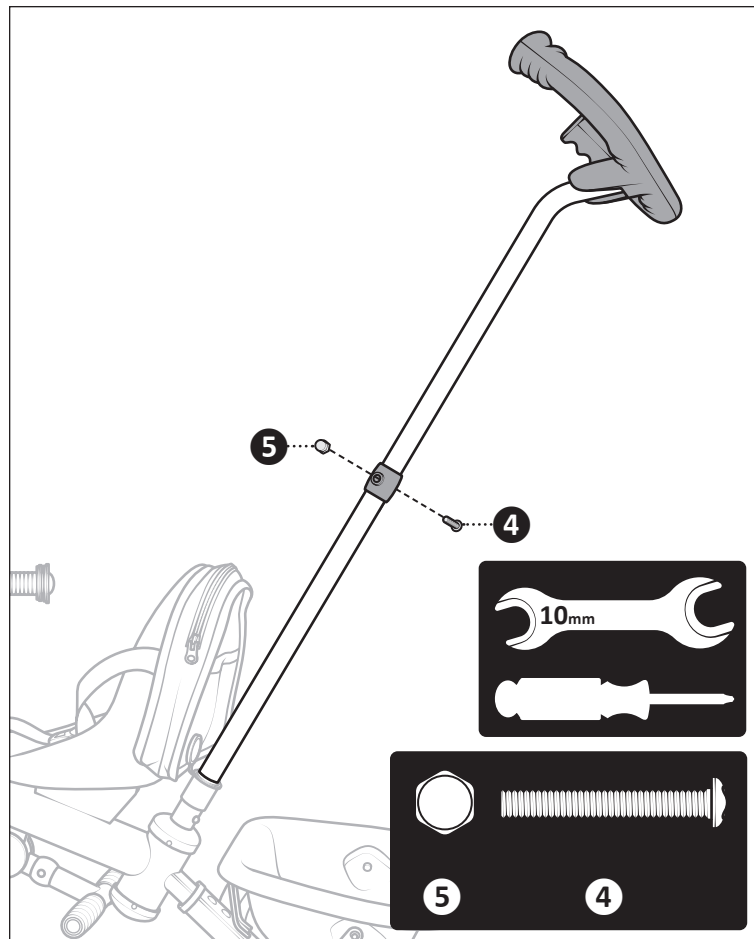
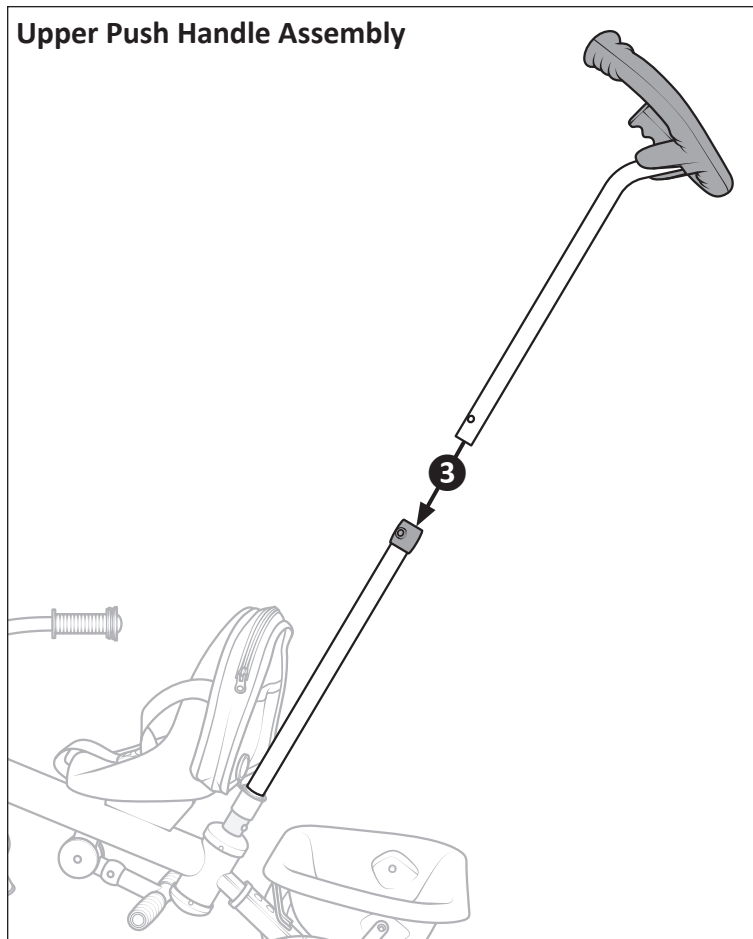
Note: Saddle is adjustable. Choose the appropriate saddle position and install the bolts.



Lower Push Handle Assembly

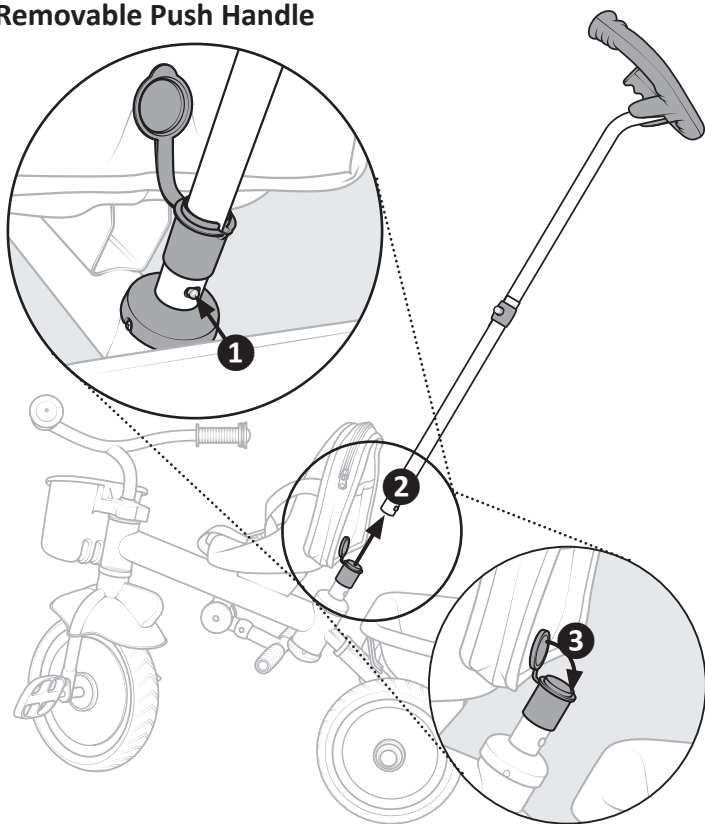


Upper Push Handle Assembly

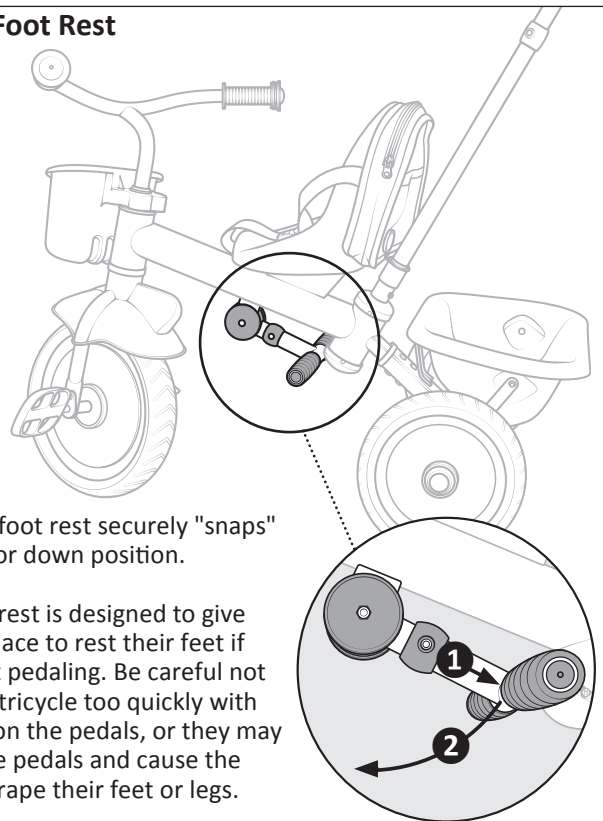


4 Use

Removable Push Handle



Optional Foot Rest

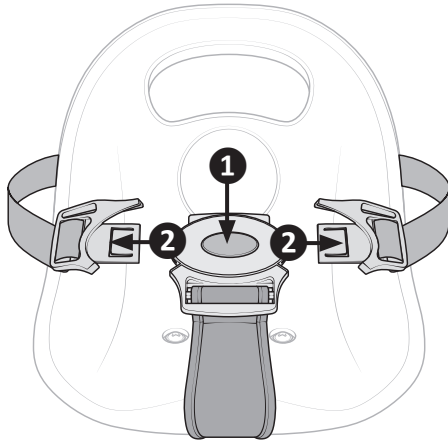


Be sure the foot rest securely "snaps" into the up or down position.

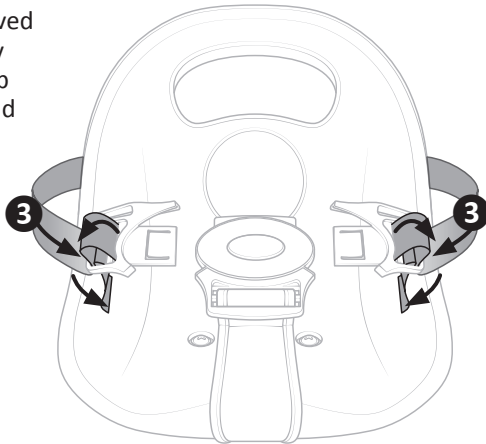
Note: Foot rest is designed to give children a place to rest their feet if they are not pedaling. Be careful not to push the tricycle too quickly with child's feet on the pedals, or they may come off the pedals and cause the pedals to scrape their feet or legs.

Safety Belt

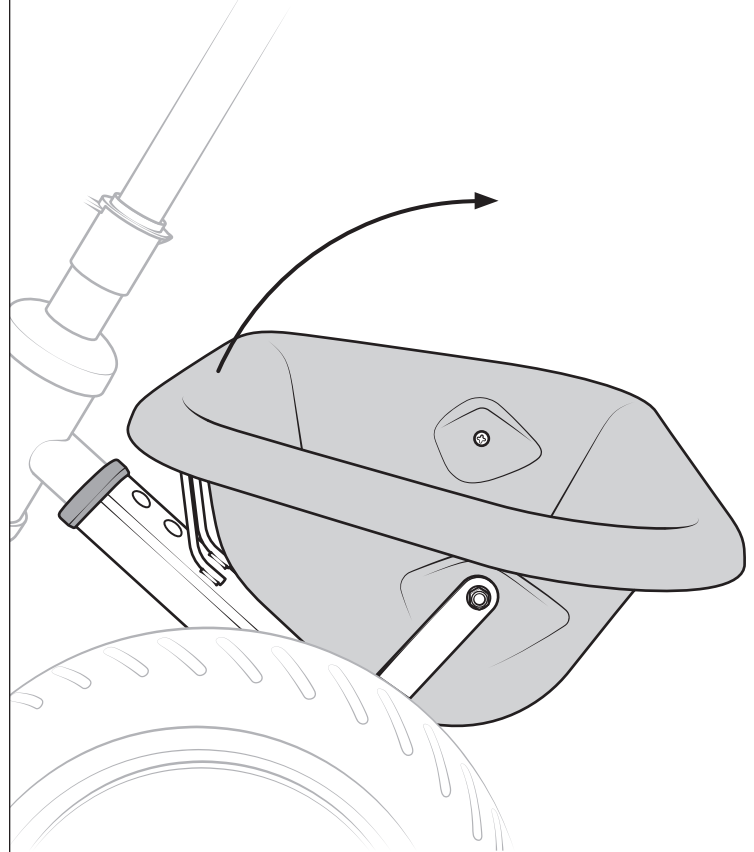
- 1** Safety belt is opened by depressing the oval center button. The left and right safety belt can be released.
- 2** To latch, push the left and right seat belt tabs into the seat buckle until they "click".



- 3** Slack can be removed from safety belt by pulling excess strap through the left and right buckles.



Dump bin *Note:* not for additional passenger.



5 Maintenance

CARING FOR YOUR TRICYCLE

The tricycle comes with a durable finish. While this coat will withstand years of use it is susceptible to rust if the coat is damaged. We recommend touching up any scratches or gouges in the finish with a similar paint color or clear protective coating. Do not return this product to the place of purchase. If your tricycle needs service, repairs or replacement parts, call:

Pacific Cycle Consumer Relations

Hours: 8:00 am – 5:00 pm (CST) Monday - Friday

Phone: 1-800-626-2811

Email: customerservice@pacific-cycle.com

Web: www.pacific-cycle.com

To order replacement parts have the model number available. It is found underneath the main frame.

6 Warranty

PACIFIC CYCLE LIMITED WARRANTY AND POLICY ON REPLACEMENT PROCEDURES AND RESPONSIBILITIES

Your purchase includes the following warranty which is in lieu of all other warranties whether express or implied. This warranty is extended only to the initial consumer purchaser. No warranty registration is required.

Frame

The entire frame is guaranteed against faulty materials and workmanship for the period of 1 year from the date of purchase to the initial consumer, subject to the condition of the warranty listed below. If frame failure should occur due to faulty materials or workmanship during the guarantee period, the frame will be replaced. For frame replacement under this Pacific Cycle Limited Warranty, contact us, stating the nature of the failure, model number, date received and the name of the store from which the trike was received, at the address given below. Frame must be returned for inspection at customer's expense.

Parts

All other parts of the unit except normal wear parts are warranted against defective materials and workmanship for a period of one (1) year from the date of purchase by the initial consumer purchaser, subject to the Terms and Conditions of the warranty listed below. If failure of any part should occur during the warranty period, the part will be replaced for you if the failure was due to faulty materials or workmanship. All warranty claims must be submitted to the address below and must be shipped prepaid and accompanied by

the original dated purchase receipt. Normal wear parts are defined as grips, tires, tubes, and cables. These parts are warranted to be free from defects in material and workmanship as delivered with the product. Any claim for repair or replacement of normal wear parts must be made within thirty (30) days of the date of purchase. The warranty does not cover normal wear and tear, improper assembly or maintenance, or installation of parts or accessories not originally intended or compatible with the trike as sold. The warranty does not apply to damage or failure due to accident, abuse, misuse, neglect, or theft. Claims involving these issues will not be honored.

Conditions of Warranty

1. Your tricycle has been designed for general transportation and recreational use, but has not been designed to withstand abuse associated with stunting and jumping. This warranty ceases when you rent, sell or give away the trike, ride with more than one person, or use the tricycle for stunting or jumping.
2. This warranty does not cover ordinary wear and tear or anything you break accidentally or deliberately.
3. It is the responsibility of the individual consumer purchaser to assure that all parts included in the factory sealed carton are properly installed, all functional parts are initially adjusted properly, and subsequent normal maintenance services and adjustments necessary to keep the tricycle in good operating condition are properly made. This warranty does not apply to damage due to improper installation of parts or failure to properly maintain or adjust the tricycle.

PACIFIC CYCLE, INC., IS NOT RESPONSIBLE FOR INCIDENTAL OR CONSEQUENTIAL DAMAGES. THIS LIMITED WARRANTY DOES NOT COVER ANY PERSONAL INJURIES, DAMAGE TO, OR, FAILURE OF THE TRIKE OR ANY OTHER LOSSES DUE TO ACCIDENT, MISUSE, ALTERATION, NEGLIGENCE, ABUSE, NORMAL WEAR AND TEAR, IMPROPER ASSEMBLY, IMPROPER FIT, IMPROPER MAINTENANCE OR USE OF UNAUTHORIZED REPLACEMENT PARTS NOT DESIGNED FOR THE TRICYCLE.

THIS LIMITED WARRANTY IS THE ONLY WARRANTY APPLICABLE TO THIS TRICYCLE, AND IS EXPRESSLY IN LIEU OF ANY OTHER WARRANTY. ANY IMPLIED WARRANTIES, INCLUDING ANY WARRANTY OF MERCHANTABILITY AND WARRANTY OF FITNESS FOR A PARTICULAR PURPOSE IS LIMITED IN DURATION TO THE DURATION OF THIS EXPRESS WARRANTY. This limited warranty gives you specific legal rights and you may also have other rights which may vary from state to state.

NOTICE: Tricycle specifications are subject to change without notice.

Toll free: 1-800-626-2811.

Customer Service hours:

Monday - Friday 8 AM- 5 PM Central Standard Time (CST)

You may also reach us at:

Web: www.pacific-cycle.com

Email: customerservice@pacific-cycle.com

Mail: P. O. Box 344

4730 E. Radio Tower Lane

Olney, IL 62450



SCHWINN®