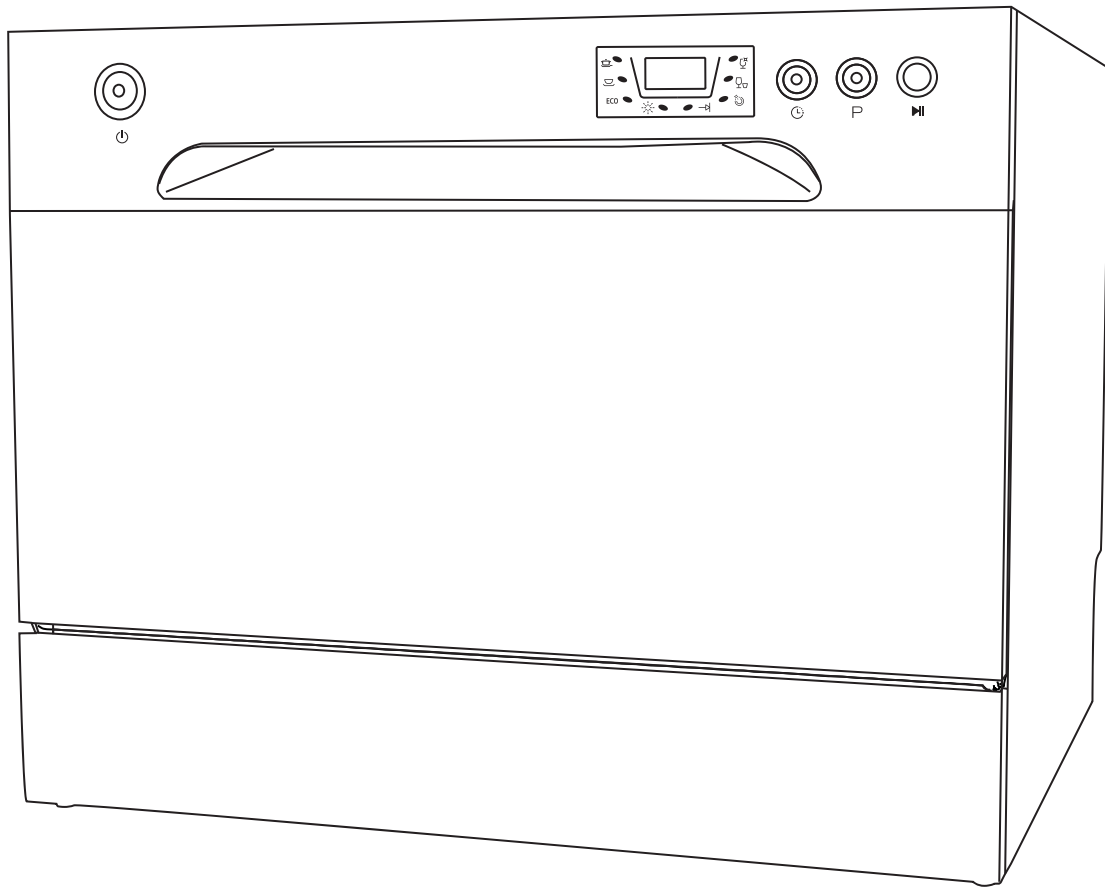




Countertop Dishwasher

User Guide

IVADWCTWT / IVADWCTBK



Thank you for purchasing the Ivation® Countertop Dishwasher. This User Guide is intended to provide you with guidelines to ensure that operation of this product is safe and does not pose risk to the user. Any use that does not conform to the guidelines described in this User Guide may void the limited warranty.

Please read all directions before using the product and retain this guide for reference. This product is intended for household use only.

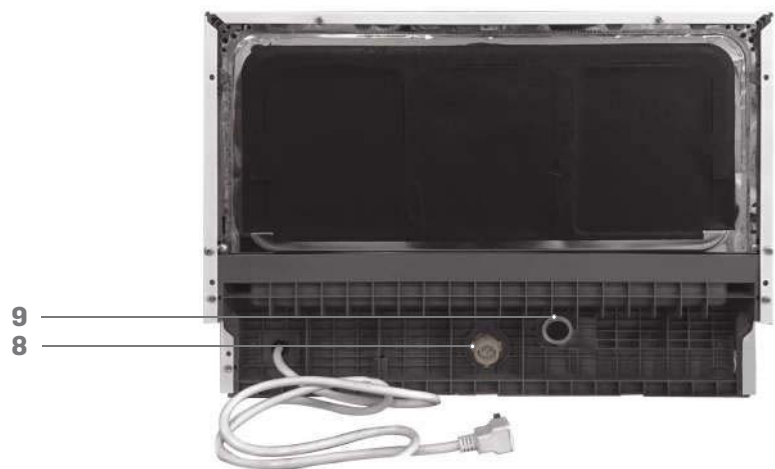
This product is covered by a limited one-year warranty. Coverage is subject to limits and exclusions. See warranty for details.

Box contents

- Dishwasher
- User guide

Parts

1. Cup shelf
2. Dish basket
3. Detergent dispenser
4. Filter
5. Cutlery basket
6. Rinse aid dispenser
7. Spray arms
8. Water inlet connector
9. Drain outlet connector



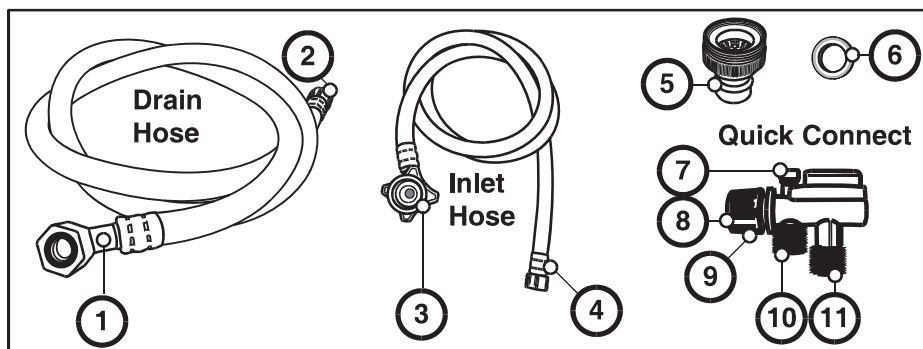
Control panel

1. Power button
2. Program indicator light
3. Display screen
4. Rinse aid function indicator
5. Program ending indicator
6. Delay button
7. Wash program selector
8. Start/pause button



Assembly parts

1. Drain port connection
2. Drain hose quick connection
3. Inlet port connection
4. Inlet hose quick connection
5. Faucet adapter
6. Faucet washer
7. Pressure relief valve
8. Faucet adapter connection
9. Locking collar
10. Inlet hose connection
11. Drain hose connection



Safety precautions

- Do not place heavy objects on the door.
- Do not sit or stand on the door.
- Do not touch the heating element during or immediately after use.
- Do not operate the unit unless all enclosure panels are properly in place.
- When in use, keep plastic items away from the heating element.
- When loading sharp items, position them so that they do not damage the door seal.
- When loading knives or other sharp items, place them in the basket with the pointed end down or in a horizontal position.
- Always check that the detergent dispenser is empty after completing a wash cycle.
- Only wash plastic items that have been marked as dishwasher safe.
- Only use detergent that is designed for an automatic dishwasher.
- Never use soap, laundry detergent, or hand washing detergent in the dishwasher.
- Keep all detergents out of reach of children and pets.
- This appliance is not intended for use by children and persons with reduced physical, sensory, or mental capabilities, or lack of experience and knowledge, unless they have been given supervision or instruction concerning the use of the appliance by a person responsible for their safety.
- Always close the unit when not in use.
- Do not use the unit if the power cord is damaged.
- Use this appliance for its intended function only.
- Do not bend or flatten the power cord.
- Do not exceed the maximum capacity of the unit.
- Do not exceed the unit's rated pressure.

Do not wash the following items with this unit

- Cutlery with wooden, china, or mother-of-pearl handles
- Plastic items that are not heat resistant
- Cutlery with parts that are not heat resistant
- Bonded cutlery or dishes
- Pewter or copper
- Crystal glass
- Steel items that are subject to rust
- Wooden platters
- Synthetic items not marked "dishwasher-safe"

Use caution when washing the following items with this unit

- Certain types of glass that are not rated as dishwasher safe
- Silver and aluminum may discolor when used in this unit
- Glazed patterns on ceramics may fade if machine-washed frequently

Installation

1. Screw the faucet adapter onto the faucet tap. Check that the connection is secure and that there are no leaks.
2. Connect the six-sided connection of the drain hose to the drain port connection on the back of the dishwasher. Do not over-tighten or risk damage.
3. Connect the star-shaped connection of the inlet hose to the inlet port on the back of the dishwasher. Do not over-tighten or risk damage.
4. Connect the circular connection of the drain hose onto the long (bottom) male connection on the quick connect.
5. Connect the circular connection of the inlet hose onto the short (top) male connection on the quick connect.
6. Attach the quick connect onto the faucet adapter by pulling down the outer locking collar on the quick connect while pushing the quick connect upward onto the faucet adapter.
7. When the quick connect snaps onto the faucet adapter, release the locking collar. Check that the connection is secure.
8. Slowly open the hot water line and check for any sign of water leaks in the hose connections. If leaks are found, immediately turn off the water supply and secure the hose connections.

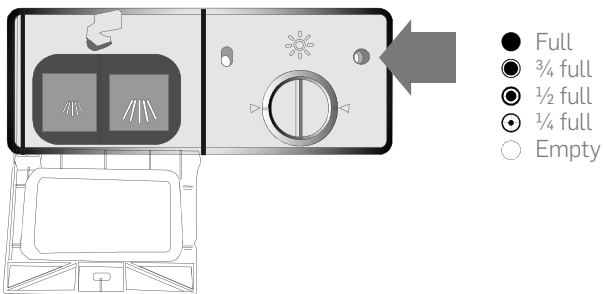
NOTE: before disconnecting the quick connect from the faucet, relieve the water pressure by first turning off the water line, then press and hold the red pressure relief button on the quick connect until the water flow stops.

Before operation

1. Check that the dishwasher is on a flat, level surface.
2. Set the inlet valve to an open position.
3. Check that there is no leakage from any of the connections.
4. Check that all wires are securely connected.
5. Check that the power is on.
6. Check that all packaging materials have been removed from the inside of the unit.

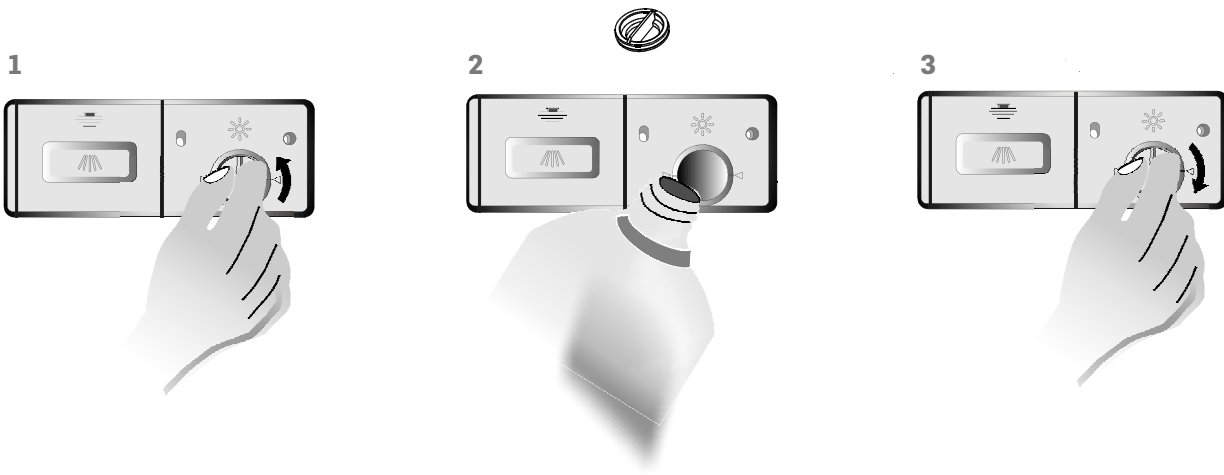
Operating the rinse aid dispenser

Check the size of the black dot on the rinse aid level indicator. If the rinse aid level is $\frac{1}{4}$ capacity or less, refill.



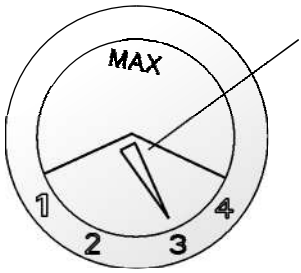
To fill the rinse aid dispenser:

1. Open the dispenser, turning the cap left and lifting it out, as seen below.
2. Pour the rinse aid into the dispenser, being careful to not overfill.
3. Replace the cap, turning it right until it is securely in place.



To adjust the rinse aid dispenser:

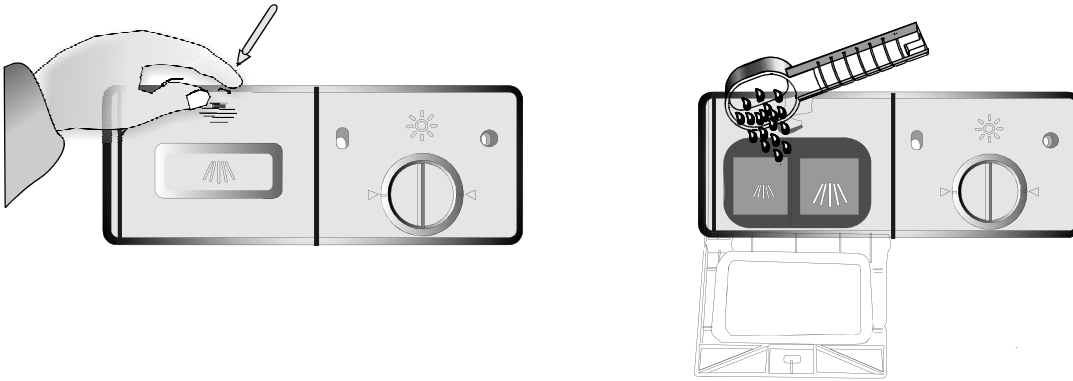
1. Set the dial to the desired setting. The recommended standard setting is "3".
2. If dishes are not drying properly or are spotted, set the dial to "4".



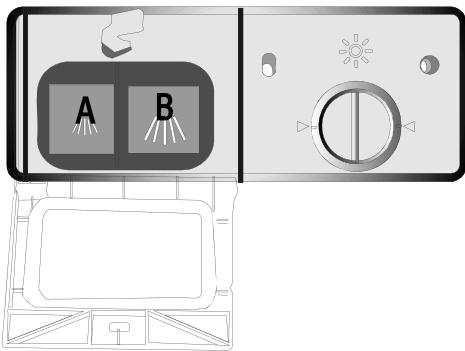
Operating the detergent dispenser

Fill the detergent dispenser immediately before each wash cycle:

1. Press the release button to open the latch of the detergent dispenser.



2. If using 0.5 ounces of detergent, use slot A, as seen below. If using 1 ounce of detergent, use slot B. For light loads or loads that are not heavily soiled, use 0.5 ounces (1 tablespoon) of detergent.
3. Close the lid to the dispenser before operation.

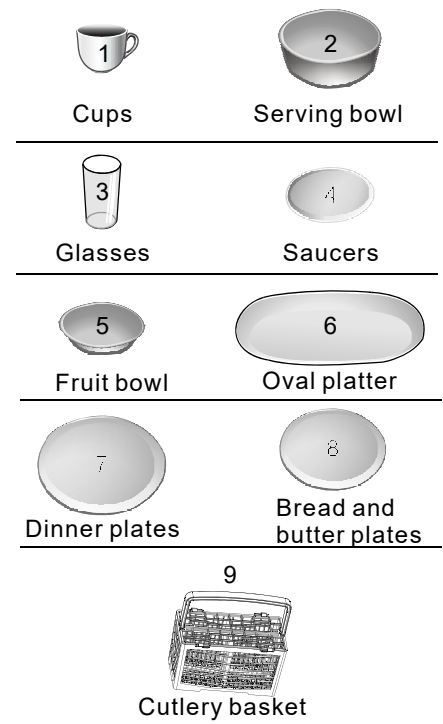
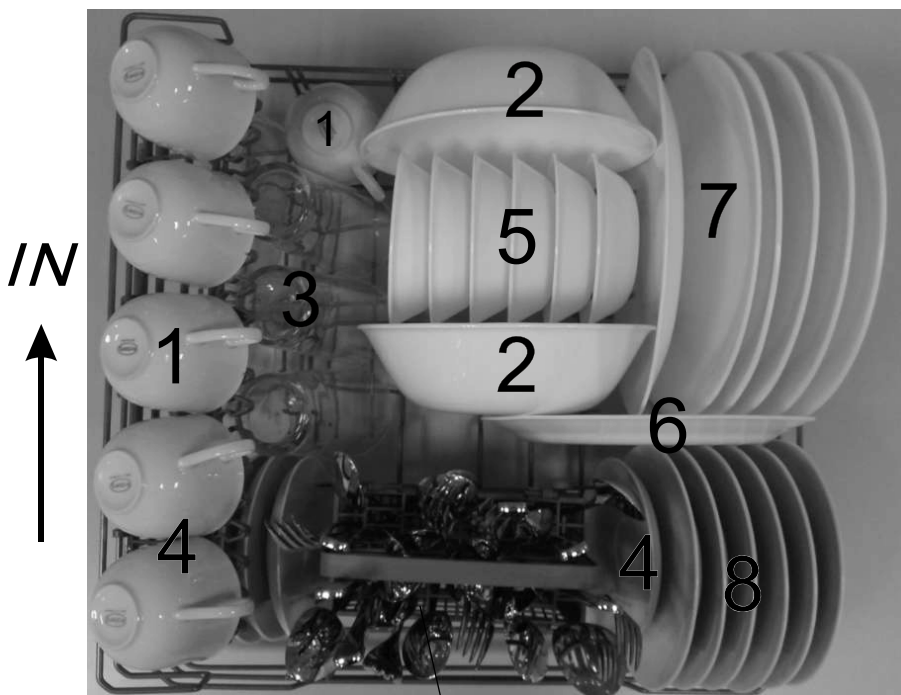


NOTE: only use detergents that are specifically made for dishwashers.

Loading the dishwasher






Keep in mind the following when loading the dishwasher:

- Before loading the dishwasher scrape off any large amounts of leftover food.
- Place items such as cups, glasses, pots/pans, etc. face down.
- Place curved items or those with recesses at a slant so that the water can run off.
- All utensils should be stacked securely so that they do not tip over.
- Place utensils so that they do not obstruct the spray arms.
- Load any hollow items with the opening downwards, so that water does not collect inside.
- Do not cover any items in the dishwasher, or they may not be washed thoroughly.
- To not let glasses touch each other, or risk damage.
- Load large items into the basket.
- Load knives with the blade facing downward.
- Place long and/or sharp cutlery horizontally in the basket.
- Place cutlery in the cutlery basket with the handles at the bottom.



9

Wash cycles

Program	Cycle information	Cycle process	Detergent	Running time (min.)	Energy (Kwh)	Water (gal)	Rinse aid
 Heavy	For heavily soiled loads such as pots, pans, casserole dishes, and items used for foods that are difficult to remove.	Pre-wash Pre-wash (122°F/50°C) Wash (131°F/55°C) Wash (122°F/50°C) Rinse (154°F/68°C) Dry	1 oz.	100	0.49	3.3	Yes
 Normal	For moderately soiled loads, such as pots, plates, glasses, and lightly soiled pans.	Pre-wash Pre-wash (125.6°F/52°C) Rinse Rinse (149°F/65°C) Dry	1 oz.	110	0.36	2.8	Yes
ECO ECO	For lightly soiled loads, such as glasses, crystal, and fine china.	Pre-wash Pre-wash (122°F/50°C) Wash (122°F/50°C) Rinse Rinse (140°F/60°C) Dry	1 oz.	75	0.27	2.6	Yes
 Glass	For lightly soiled dishes and glass.	Pre-wash Wash (122°F/50°C) Rinse Rinse (140°F/60°C) Dry	0.5 oz.	70	0.28	2.2	Yes
 Speed	For lightly soiled loads that do not need drying.	Pre-wash Pre-wash (122°F/50°C) Wash (122°F/50°C) Rinse Rinse (131°F/55°C)	0.5 oz.	45	0.31	2.7	Yes
 Rinse	For rinsing dishes, glasses, and cutlery that will not be washed immediately.	Pre-wash Main-wash	/	24	0.03	1	No

Operation

1. Plug in the unit.
2. Open the dishwasher, and load in dishes as described in the steps above.
3. Pour detergent into the detergent dispenser.
4. Set the water supply to full pressure.
5. Close the door and press the on/off button to turn the unit on.
6. Press the program button to select the desired wash cycle (heavy, normal, ECO, glass, speed, rinse).
7. Press the start/pause button to begin the wash cycle.

Note that the lights on the unit will indicate the current mode:

All lights are off=standby

The display light is on=parsed

The display light is blinking=running

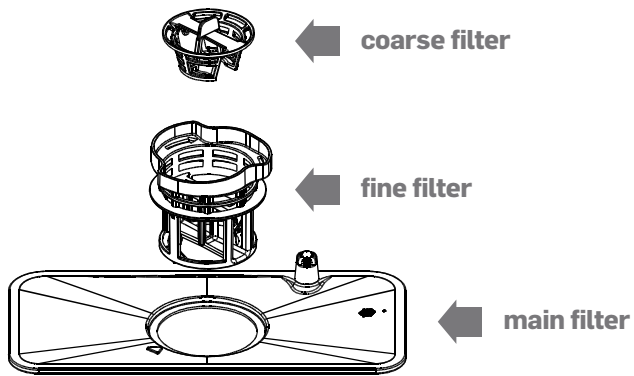
Adding dishes after the unit has started

1. Press the start/pause button
2. Open the door slightly until the wash cycle stops.
3. Open the door completely after the spray arms have stopped.
4. Add dishes.
5. Close the door.
6. Press the start/pause button. The dishwasher will resume operation after 10 seconds.

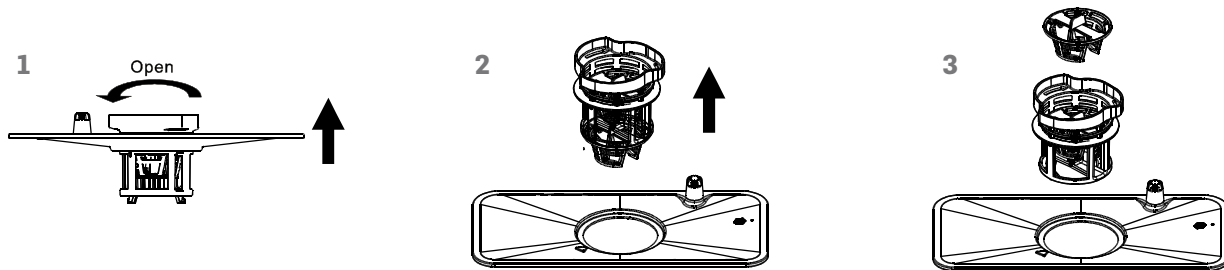
NOTE: this can only be done before the detergent has been dispensed.

Care and maintenance

Cleaning the filter:



1. Remove the filter by rotating it counterclockwise, then lifting it out of place.
2. Remove the fine filter and coarse filter as seen below.



3. Remove any food remnants by rinsing each filter part under running water, using a cleaning brush for any stuck pieces.

Cleaning the door:

1. Clean the edge around the door with a warm damp cloth.
2. Do not use any kind of spray cleaner or other abrasive cleaner.

Cleaning the spray arms:

1. Remove the spray arm, grasping the middle, then pulling it upwards.
2. Wash under running water, then reinstall, checking that the arm still turns freely.

Protect against freezing:

During the winter, take the following precautions.

1. Cut off the power to the dishwasher.
2. Turn off the water supply and disconnect the water inlet pipe from the water valve.
3. Drain water from the inlet pipe and water valve.
4. Reconnect the water inlet pipe to the water valve.
5. Remove the filter at the bottom of the tub and use a sponge to remove any remaining water.

Error Codes

Code	Meaning	Possible cause
E1	Long inlet time.	The faucet is not open, the water intake is restricted, or the water pressure is too low.
E4	Overflow.	The dishwasher is leaking.

Troubleshooting

Technical problems

Problem	Possible cause	Solution
The dishwasher does not start.	The fuse is blown or the circuit breaker has been tripped.	Replace the fuse or reset the circuit breaker. Remove any other appliances sharing the same circuit with the dishwasher.
	The power supply is not turned on.	Check that the dishwasher is turned on and make sure the power cord is properly plugged into the wall socket.
	The dishwasher door is not properly closed.	Check that the door is completely closed.
Water is not pumped from the dishwasher.	The drain hose is kinked or bent.	Check the drain hose.
	The filter is clogged.	Check the coarse filter for clogging.
	The sink is clogged.	Check the sink to make sure it is draining properly.

General problems

Problem	Possible cause	Solution
There are soap suds left in the washer.	Improper detergent was used.	Use only detergent made specifically for dishwashers to avoid soap suds.
	The rinse aid was spilled.	Always wipe away any spilled rinse aid.
The washer interior is stained	Detergent with colorant was used.	Use a damp sponge with dishwasher detergent to clean the interior.
There is white film on the inside surface.	This can happen when using hard water.	Use a damp sponge with dishwasher detergent to clean the interior.
There are rust stains on cutlery.	The affected items are not corrosion resistant.	Only use items that are marked as dishwasher safe.

Noise problems

Problem	Possible cause	Solution
There is a knocking noise.	The spray arm is knocking against an item in the basket.	Pause the wash cycle. Rearrange the items that are obstructing the spray arm.
There is a rattling noise.	The cutlery is loose in the basket.	Pause the wash cycle. Rearrange the items.
There is a knocking noise in the water pipes.	This may be caused by on-site installation or the cross-section of the piping.	This does not affect performance. If this continues to be a problem, contact a qualified plumber.

Unsatisfactory washing

Problem	Possible cause	Solution
The dishes are not clean.	The dishes were not loaded correctly.	Check the "Loading the dishwasher" section of the user guide.
	The wash cycle was not powerful enough.	Select a more intensive wash cycle.
	Not enough detergent was used.	Use more detergent or use a different detergent.
	Items are blocking the path of the spray arms.	Rearrange the items so that the spray arms can rotate freely.
	The filter and/or spray arms are not clean.	Clean the filter and spray arms.
The glassware is cloudy.	This can be a result of using soft water and too much detergent.	If using soft water, use less detergent and the shortest wash cycle.
There are black or gray marks on the dishes.	Aluminum utensils rubbed against the dishes.	Use a mild abrasive detergent to eliminate the marks.
There is detergent left in the dispenser cup.	The dishes blocked the detergent cups.	Reload the dishes properly and try again.

Unsatisfactory drying:

Problem	Possible cause	Solution
The dishes are not drying.	Improper loading.	Load the dishwasher per the directions above.
	Too little rinse aid.	Increase the amount of rinse aid in the dispenser.
	The dishes were removed too soon.	Do not empty the dishwasher immediately after washing. Open the door slightly so that the steam can escape, then unload the dishwasher when the dishes are warm but not hot.
	Incorrect wash cycle selection.	In short wash cycles, the temperature is lower and the cleaning performance is also reduced. Select a longer wash cycle.
	The cutlery has a low-quality coating.	This type of cutlery is not suitable for the dishwasher.

Specifications

Dimensions: 17" x 21.5" x 20" (438 x 550 x 500mm)

Water pressure: 0.04–1.0MPa

Capacity: 6 place settings

Customer service

info@myivation.com

866-849-3049

Distributed by
C&A Marketing, Inc.
114 Tived Lane East
Edison, NJ 08837 USA

Europe: C&A Europe
167 Hermitage Road
Crusader Industrial Estate
London N4 1LZ
United Kingdom

info@myivatn.com

Made in China
Ivation and the Ivation logo are registered
trademarks of C&A Holdings, LLC in the U.S.
©2017 All rights reserved