



**MODERN**PORTABLE

Getting Started Manual For:

**HIFI ELITE SUPER66**

**Bluetooth Over Ear Headphones**

Please Visit Us At:

[www.ModernPortable.com](http://www.ModernPortable.com)

For Getting Started or Support Questions

Please Email Us At: [Support@ModernPortable.com](mailto:Support@ModernPortable.com)



## Product Specifications:

The HIFI ELITE SUPER 66 Over Ear Headphone is a Bluetooth Wireless Headphone featuring an advanced portable hand free communication A2DP profile built with in its Bluetooth technology. The headphone is designed and manufactured in accordance with Bluetooth specification VR4.0 which supports adaptive frequency hopping and allows faster connection, an is far more advanced than other Bluetooth V2.1 Headphones that many of our competitors implement

- Bluetooth Version: VR4.0
- Frequency Range: 2.4GHz
- Battery Standard: Rechargeable lithium polymer battery
- Bluetooth Mode: Headset/Hand Free/A2DP/VR4.0
- Power Adaptor Output: DC5V 150mA
- Operation Range: Up to 30 to 33 feet (without obstruction)
- Talk Time 15 Hours
- Playing Time: Up to 6 hours (Actual Talk/Play time may vary for a variety of reasons including volume level, device, power on/off and more)
- Standby Time: Up to 200 hours
- Charging Time: 2-4 hours

## Package Contents:

- 1x Modern Portable HIFI ELITE SUPER66
- 1x high-end matching wired cable (for wired listening)
- 1x Micro-USB Charging Cable



## Table of Contents:

- **Page 1 -2**
  - Introduction
- **Page 3**
  - Specifications & Packaging Content
- **Page 4**
  - Package Content
- **Page 5**
  - Table of Contents
- **Page 6**
  - How To Charge Your HIFI ELITE SUPER66
- **Page 7**
  - How To Power ON Your HIFI ELITE SUPER66
  - How To Power OFF Your HIFI ELITE SUPER66
- **Page 8-10**
  - How To Pair/Connect Your HIFI ELITE SUPER66 To Your Bluetooth Enabled Device
- **Page 11**
  - How To Operate Volume Controls
- **Page 12-13**
  - PLAY / PAUSE / NEXT / REWIND / REPLAY.
- **Page 13-14**
  - Wireless Hands-Free Microphone Instructions
- **Page 15 - 17**
  - Support Contact Information / FCC Statement / Warnings

## How to charge the HIFI ELITE SUPER66 :

**Important Note:** Before first use you must charge the HIFI ELITE SUPER66 completely (A Full 2 - 4 Hours). The first charge is longer than the normal (2 HOUR) charge time because it is important your HIFI ELITE SUPER66 charges completely before your first use. If you get a medium charge notification after using your Super66 right afterwards keep using until fully drained then charge again for 2 - 3 hours.

- Plug the included micro-usb charging cable into the USB charge port located on the bottom right ear cup of the HIFI ELITE Super66 (the ear cup with the control buttons).

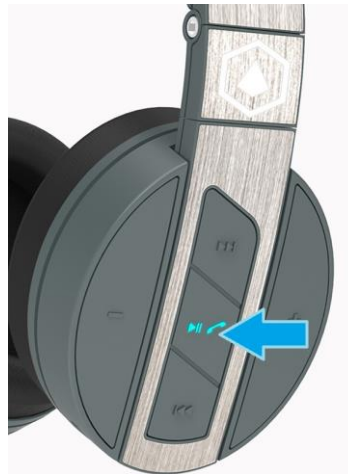


- Connect the USB side of the charging cable to any USB wall charger or charging port and plug the wall charger into a working wall outlet. (You can use the same in wall charging adaptor that comes with your smartphone or any USB charging port including your computers USB Port or a Modern Portable Power Bank).
- A (red) LED indicator light will remain solid when charging. (A full charge normally takes 2 to 4 hours).

- The (red) LED indicator light will turn off and be replaced by a blue indicator light when the charging is complete.

## How To Power On Your HIFI ELITE SUPER66:

- **Power “ON” your HIFI ELITE SUPER66:** Press and hold the middle multifunction (Play/Pause/Power) button on the right ear cup for **8 to 10 seconds** after **3 to 5 second** you will hear “**POWER ON**” keep holding then you will hear “**PAIRING**” after **5 to 10 seconds**. (**Important Note: Your must Hold down on the multifunction button the full 8 to 10 second when using the headphone to pair to your device**).



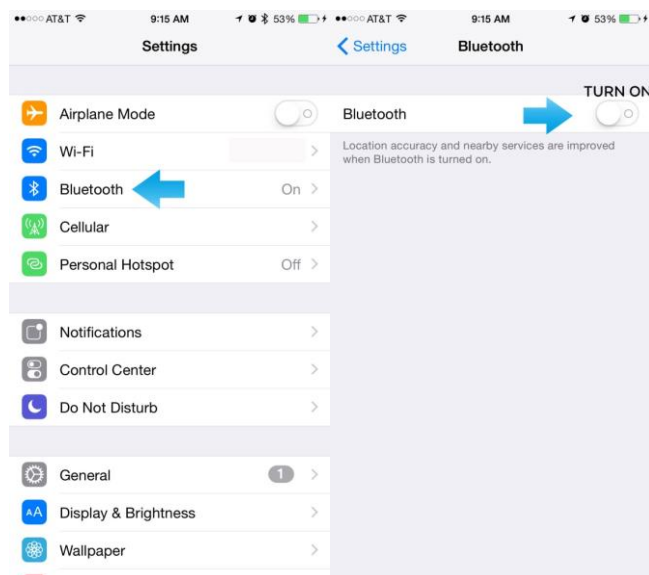
- When power is on (and you are wearing the HIFI ELITE SUPER66 on your ear) you will hear a voice command that says “**POWER ON**” then “**PAIRING**”. After holding the button for 8 to 10 seconds a LED light will flash blue and red indicating your HIFI ELITE SUPER66 is in Pairing mode

## How To Power Off Your HIFI ELITE SUPER66

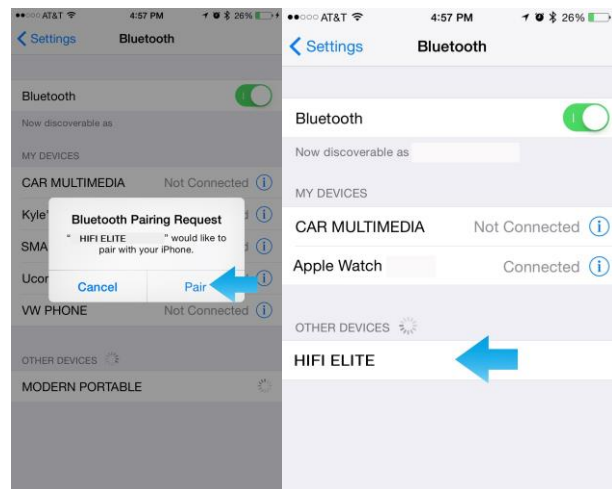
- Press and hold the middle multifunction (Play/Pause/Power) button on the right ear cup for 6 to 8 second or until you hear “**POWER OFF**”.
- When the power is off (and you are wearing the HIFI ELITE SUPER66 in over your ear) you will hear a voice command that says “**POWER OFF**”.

## How To Pair Your HIFI ELITE SUPER66 To Your Bluetooth enabled device:

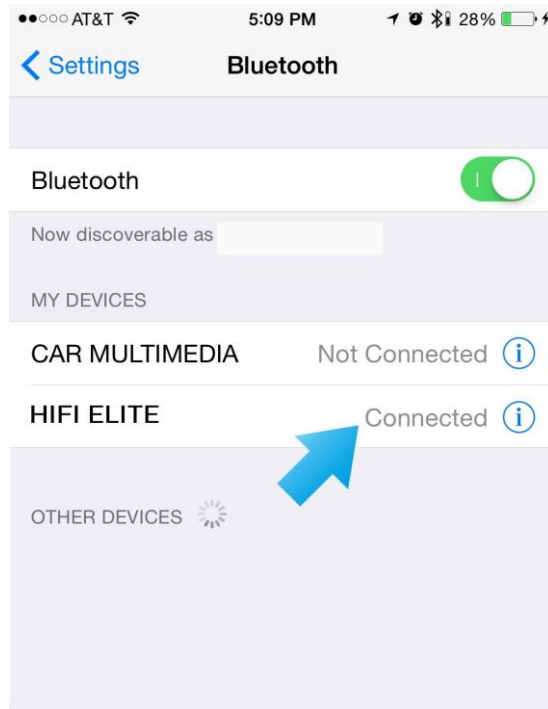
- Press and hold the middle multifunction (Play/Pause/Power) button on the right ear cup for **8 to 10 seconds** you will first hear **“POWER ON”** after 3 to 5 second then **“PAIRING”** after 5 to 10 seconds. (Important Note: Hold down on the multifunction button the full 8 to 10 Second when using the headphone to pair to your device).
- A red and blue LED indicator light will also appear flashing on the multifunction button.
- After your HIFI ELITE SUPER66 is in pairing mode, please refer to the Bluetooth settings for your Bluetooth enabled device (i.e. iPhone or android smartphone) and turn on the Bluetooth function from your smartphone, Tablet or the Bluetooth enabled device you are attempting to connect/pair to).



- Search and refresh your Bluetooth settings page from your Bluetooth enabled device.
- From your Bluetooth Enabled device Find and Select “HIFI ELITE” in your other devices or available Bluetooth devices (You may also receive a Pairing Request, if so select “Pair”).



- **Important Note:** Please make sure you disconnect any other Bluetooth devices you have previously enabled or connected to before pairing the HIFI ELITE SUPER66. Once selected the HIFI ELITE SUPER66 should automatically connect. If it does not automatically connect and your device asks for a four digit code please enter the code "0000".
- Once pairing is successful, the BLUE & RED LED indicator will stop flashing and a BLUE LED indicator will flash then disappear from the multifunction button.
- When wearing the headphones over your ear you will also hear a voice prompt from the HIFI ELITE Super66 saying, "YOUR PHONE IS CONNECTED".



- IMPORTANT NOTES:** Please make sure the HIFI ELITE SUPER66 is off before attempting to pair. The HIFI ELITE SUPER66 will connect to the pre-set phone automatically when it is turned on. (Please make sure you have the Bluetooth function turned on from your smartphone, tablet, PC or any Bluetooth enabled device you are using.)

## How To Operate The Volume Controls:

- When listening to music, movies, playing games, using the hands free calling microphone or any audio from your HIFI ELITE SUPER66 adjusting the volume is easy.
- **How To Increase The Volume:** To increase the volume from your HIFI ELITE SUPER66 tap down the (+) symbol button one press at a time (the volume will increase 1 volume level at a time).

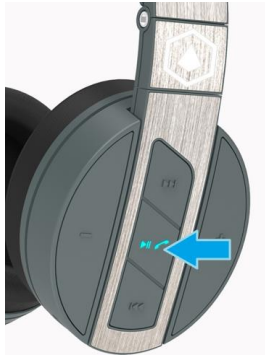


- **How To Decrease The Volume:** To decrease the volume from your HIFI ELITE SUPER66 press the (-) symbol button one press at a time (the volume will decrease 1 volume level at a time).

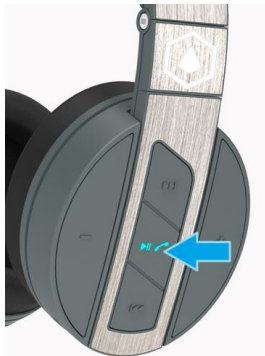


## Play / Pause / Next / Rewind / Reply

**Play Audio:** To begin playing audio find the desired song, station, application, video, or other audio source you would like to play from your Bluetooth enabled device. Either press the play button directly from your paired device or press the multifunction (PLAY/PAUSE/POWER) button once (1) from the right ear cup of your HIFI ELITE SUPER66.



**Pause Audio:** To pause audio to can either press the play button directly from your device or press the multifunction (PLAY/PAUSE/POWER) button once (1) from the right ear cup of your HIFI ELITE SUPER66. To replay the audio press the same button one more time.



**Next Song (|<<):** To skip to the next song press the NEXT Button (|<<) located on the bottom right ear cup of the control buttons of your HIFI ELITE SUPER66.

**Rewind or Replay (>>|):** To rewind song “press and hold” the top BACK Button (>>|). To replay current song tap the BACK Button. **The BACK BUTTON** is located on the top right ear cup of the control buttons of your HIFI ELITE SUPER66.

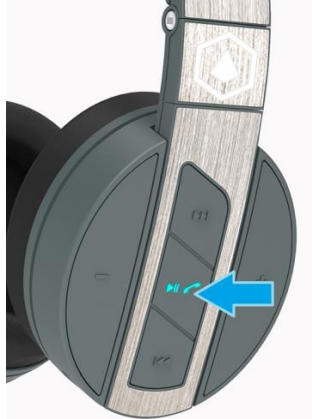


## Wireless Hands Free Microphone Instructions:

**Answering an incoming call:** When receiving an incoming call from your paired device you will hear a “BEEP” and voice command saying, “INCOMING CALL” from your HIFI ELITE SUPER66.

To answer the call you can:

- A) Answer the Call from your Paired Smartphone Device.
- B) Press the multifunction button (PLAY/PAUSE/POWER) once (1 time) from your right ear cup controls of your HIFI ELITE SUPER66 controls.



**To End a call:** To END the call you can:

- A) End the Call from your Paired Smartphone device.
- B) Press the multifunction button (PLAY/PAUSE/POWER) once (1 time) from your right ear cup controls of your HIFI ELITE SUPER66 controls.

**To Reject a call:** To REJECT the call you can:

- A) Reject the Call from your Paired Smartphone device.
- B) Double tap the multifunction button (PLAY/PAUSE/POWER) tap two time (2) from your right ear cup controls of your HIFI ELITE SUPER66 controls.

**To Redial the last dialed number:**

To REDIAL the last dialed number

- B) Double tap the multifunction button (PLAY/PAUSE/POWER) tap two time (2) from your right ear cup controls of your HIFI ELITE SUPER66 controls.

On behalf of the entire team here at MODERN PORTABLE, we are extremely delighted to have you as a customer and we hope you LOVE the HIFI ELITE SUPER66!

For Getting Started or Support Questions Please  
Email Us At: [Support@ModernPortable.com](mailto:Support@ModernPortable.com)

FCC statements:

This device complies with part 15 of the FCC rules. Operation is subject to the following two conditions: (1) this device may not cause harmful interference, and (2) this device must accept any interference received, including interference that may cause undesired operation.

NOTE: The manufacturer is not responsible for any radio or TV interference caused by unauthorized modifications or changes to this equipment. Such modifications or changes could void the user's authority to operate the equipment.

NOTE: This equipment has been tested and found to comply with the limits for a Class B digital device, pursuant to part 15 of the FCC Rules. These limits are designed to provide reasonable protection against harmful interference in a residential installation. This equipment generates uses and can radiate radio frequency energy and, if not installed and used in accordance with the instructions, may cause harmful interference to radio communications. However, there is no guarantee that interference will not occur in a particular installation. If this equipment does cause harmful interference to radio or television reception, which can be determined by turning the equipment off and on, the user is encouraged to try to correct the interference by one or more of the following measures:

- Reorient or relocate the receiving antenna.
- Increase the separation between the equipment and receiver.
- Connect the equipment into an outlet on a circuit different from that to which the receiver is connected.
- Consult the dealer or an experienced radio/TV technician for help.

## Safety & Precautions:

***This product contains a lithium-ion battery. Please read Important Safety and Product Information Below.***

*Read all safety and operation instructions before using the Bluetooth In Ear Headphones.*

*Warning: To reduce the risk of fire or electric shock, do not expose the product to water or moisture. Important Safety Instructions*

- 1. Do not expose the Headphones to liquid, moisture or areas of high humidity.*
- 2. Do not use abrasive cleaners to clean the HEADPHONES as they may damage the unit. Always unplug and power off the unit before cleaning.*
- 3. Do not expose the HEADPHONES to extremely high or low temperatures.*
- 4. Do not attempt to open or modify the HEADPHONES in any way.*
- 5. Keep the unit away from direct sunlight.*
- 6. Refer to your State's driving laws to see if they permit using Bluetooth Headphones while driving.*
- 7. To avoid electronic interference and/or compatible conflicts, turn off the HEADPHONES in any facilities where posted notices instruct you to do so. For example: Aircraft, Military Base, Hospital or Health Care Facilities.*
- 8. To avoid impairing your hearing in the long-term operation, keep the playback volume at a moderate level.*
- 9. Keep away from fire, water, and high voltage equipment.*
- 10. Store the headphones in a cool dry place.*
- 11. The HEADPHONES contain a lithium ion battery. Lithium ion batteries are flammable and can cause fire if misused, damaged or defective.*
- 12. Always dispose of the packaging and unit in accordance with the local regulations and in a responsible manner.*

**FCC Warning:**

This equipment has been tested and found to comply with the limits for a Class II digital device, pursuant to Part 15 of the FCC Rules. These limits are designed to provide reasonable protection against harmful interference in a residential installation. This equipment generates uses and can radiate radio frequency energy and, if not installed and used in accordance with the instructions, may cause harmful interference to radio communications. However, there is no guarantee that interference will not occur in a particular installation. If this equipment does cause harmful interference to radio or television reception, which can be determined by turning the equipment off and on, the user is encouraged to try to correct the interference by one of the following measures:

- Reorient or relocate the receiving antenna.
- Increase the separation between the equipment and receiver.
- Connect the equipment into an outlet on a circuit different from that to which the receiver is connected.
- Consult the dealer or an experienced radio/TV technician for help.


This device complies with Part 15 of the FCC Rules. Operation is subject to the following two conditions: (1) This device may not cause harmful interference, and (2) this device must accept any interference received, including interference that may cause undesired operation.

Any changes or modifications not expressly approved by the party responsible for compliance could void the user's authority to operate this equipment.

## Safety

- a. CAUTION: Danger of explosion if battery is incorrectly replaced. Replace only with the same or equivalent type.
- b. A warning that batteries (battery pack or batteries installed) shall not be exposed to excessive heat such as sunshine, fire or the like.



- c.  Correct Disposal of this product. This marking indicates that this product should not be disposed with other household wastes throughout the EU. To prevent possible harm to the environment or human health from uncontrolled waste disposal, recycle it responsibly to promote the sustainable reuse of material resources. To return your used device, please use the return and collection systems or contact the retailer where the product was purchased. They can take this product for environmental safe recycling.

1. Read these instructions – All the safety and operating instructions should be read before this product is operated.
2. Keep these instructions – The safety and operating instructions should be retained for future reference.
3. Heed all warnings – All warnings on the appliance and in the operating instructions should be adhered to.
4. Follow all instructions – All operating and use instructions should be followed.
5. Do not use this apparatus near water – The appliance should not be used near water or moisture – for example, in a wet basement or near a swimming pool, and the like.
6. Clean only with dry cloth.
7. Do not block any ventilation openings. Install in accordance with the

manufacturer's instructions.

8. Do not install near any heat sources such as radiators, heat registers, stoves, or other apparatus (including amplifiers) that produce heat.

9. Do not defeat the safety purpose of the polarized or grounding plug. A polarized plug has two blades with one wider than the other. A grounding plug has two blades and a third grounding prong. The wide blade or the third prong is provided for your safety. If the provided plug does not fit into your outlet, consult an electrician for replacement of the obsolete outlet.

10. Protect the power cord from being walked on or pinched particularly at the plugs, convenience receptacles, and at the point where they exit from the apparatus.

11. Only use attachments/accessories specified by the manufacturer.



12. Use only with the cart, stand, tripod, bracket, or table specified by the manufacturer, or sold with the apparatus. When a cart or rack is used, use caution when moving the cart/apparatus combination to avoid injury from tip-over.

13. Unplug the apparatus during lightning storms or when unused for long periods of time.

14. Refer all servicing to qualified personnel. Servicing is required when the apparatus has been damaged in any way, such as power supply cord or plug is damaged, liquid has been spilled or objects have fallen into the apparatus has been exposed to rain or moisture, does not operate normally, or has been dropped.



- This lightning flash with arrowhead symbol within an equilateral triangle is intended to alert the user to the presence of non-insulated “dangerous voltage” within the product’s enclosure that may be of sufficient magnitude to constitute a risk of electric shock.
- The exclamation point within an equilateral triangle is intended to alert the user to the presence of important operating and maintenance instructions in the literature