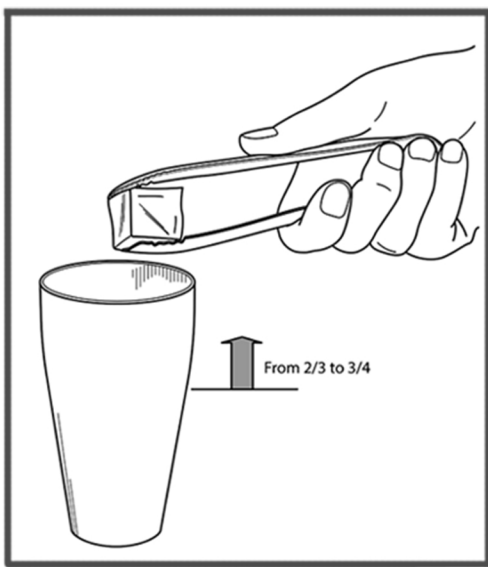


How to use your cocktail shaker set?

Thank you for your decision to buy a new martini shaker set.
Please use the following instructions to get the most out of your cocktail kit

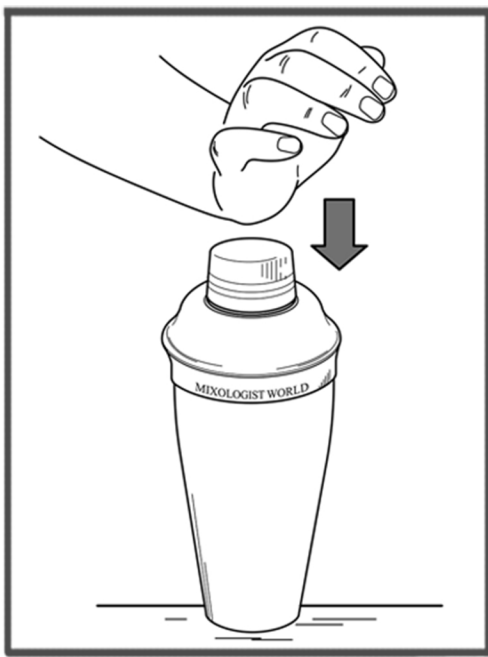
STEP 1

Prepare your cocktail recipe from the booklet.
Pour the ingredients into the mixing tin of the shaker, using your jigger.



STEP 3

Place the lid with the built-in strainer on top of the mixing tin and the second small lid over the strainer.

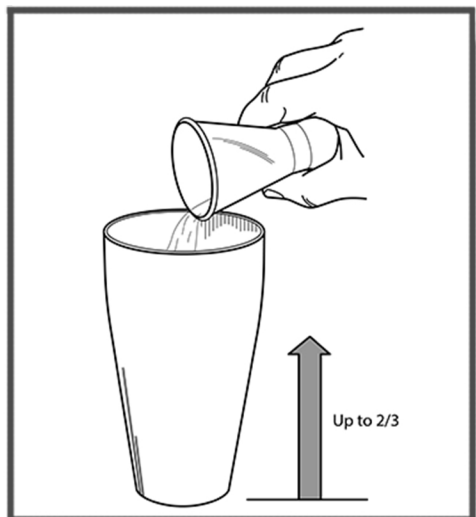


STEP 5

Hold the shaker in both hands, with one hand on top and one supporting the base, and give a sharp, snappy shake.

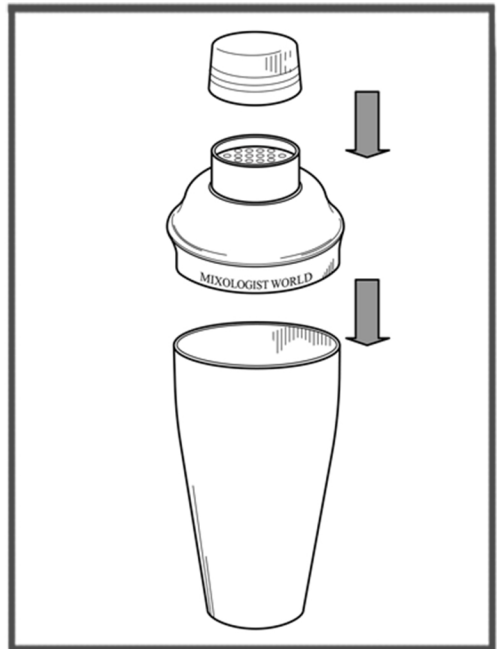


MIXOLOGIST WORLD



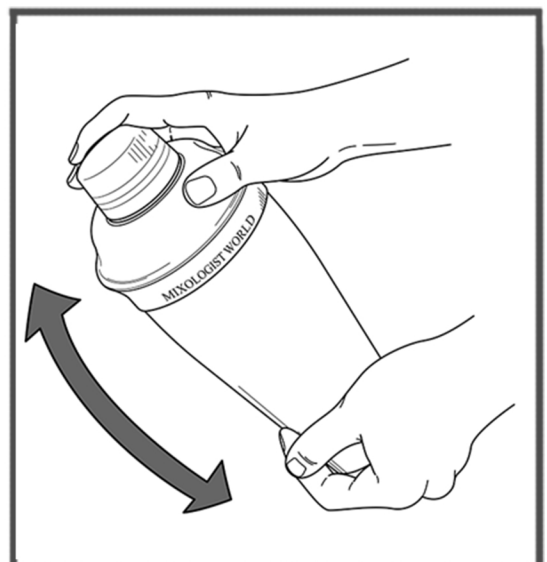
STEP 2

Add ice to the mixing tin.
Fill so that the container is 2/3 to 3/4 full of ice.



STEP 4

Tap it with the heel of your hand to seal it. Make sure its sealed well.



STEP 6

Remove the small lid and pour the drink through the strainer into your chilled serving glass.

Enjoy your cocktail!