

CHEFMAN®



InstaBrew

**SINGLE SERVE
COFFEE MAKER**

USER GUIDE

Now that you have purchased a Chefman® product you can rest assured in the knowledge that as well as your 1-year parts and labor warranty you have the added peace of mind of dedicated helplines and web support.

AFTER SALES SUPPORT

 USA 888-315-6553

 customerservice@chefman.com

MODEL: RJ14-SKG-IR



READ ALL INSTRUCTIONS BEFORE USE

For your safety and continued enjoyment of this product, always read the instruction manual before using.

Contents

- 1** Introduction
- 2** Safety Instructions
- 4** Features
- 5** Operating Instructions
- 6** User Maintenance
- 7** Terms and Conditions
- 8** Warranty Card

Introduction

CONGRATULATIONS ON YOUR PURCHASE!

Every Chefman product is manufactured to the highest standards of performance and safety, and we are confident that you will be so satisfied with your purchase that Chefman will be your go-to company for appliances in the future.

Customer satisfaction is a key element of our company's philosophy. The Chefman brand exists to fill a void on retail shelves and in consumer kitchens for a truly value-focused kitchen appliance. By questioning and adding value and innovation at every touch point in the manufacturer to end user journey, Chefman provides home chefs with the tools they need to achieve picture-perfect results with maximum efficiency. In addition to manufacturing appliances that are dependable, affordable, and built with intuitive features to enhance your kitchen experience, we pride ourselves on providing top-of-the line post purchase support, which includes complimentary access to ClubChefman.com for product tutorials, delicious recipes & how-to videos, and access to our team of dedicated Chefs.

Should a problem arise, each product is backed by a comprehensive manufacturer's 1-year warranty as well as outstanding after-sales service support through our dedicated customer service team. In the unlikely event that your product does not operate as described in the manual please feel free to call or email our helpline for assistance. We understand that sometimes products can malfunction, so if you feel that your appliance is not operating as it should, warranty claims can be made within one year from the date of purchase when accompanied by a dated receipt.

This guarantee is in addition to your statutory rights; your statutory rights are not affected. This limited warranty does not apply in cases of damage caused by accident, improper use, abuse or force majeure.

This warranty gives you specific legal rights. Rights may vary depending on your state or province of residence. Some locations do not allow limitations on implied warranties or special incidental, or consequential damages, so the limitations may not apply to you. This limited warranty will be invalidated if the appliance is tampered with in any way whatsoever.

Our telephone helpline (888) 315-6553 is available for questions or technical assistance- Monday-Friday 9am to 5 pm EST.

Customers can also receive support via email: customerservice@chefman.com.

IMPORTANT SAFEGUARDS

SAFETY INFORMATION

This appliance is for **HOUSEHOLD USE ONLY**.

WARNING: When using electrical appliances especially when children are present, basic safety precautions should always be followed to reduce the risk of fire, electric shock, and/or injury to persons, including the following:

1. Read all instructions before use.
2. Do not touch hot surfaces. Use handles or knobs.
3. To protect against fire, electrical shock and injury to persons do not immerse cord, plugs, or the appliance in water or other liquids.
4. Close supervision is necessary when any appliance is used by or near children.
5. Unplug from outlet when not in use and before cleaning. Allow to cool before putting on or taking off parts and before cleaning the appliance.
6. Do not operate appliance with a damaged cord or plug, or after the appliance malfunctions or has been dropped or damaged in any manner. Call our toll-free customer assistance number for information on examination, repair, or adjustment.
7. The use of accessory attachments not recommended by the appliance manufacturer may result in fire, electric shock or injuries to persons.
8. Do not use outdoors or in a damp area.
9. Do not let cord hang over edge of table or counter, or touch hot surfaces.
10. Do not place on or near a hot gas or electric burner, or in a heated oven.
11. To disconnect the appliance, turn control to off , then remove plug from wall outlet.
12. Do not use this appliance for anything other than its intended use.
13. Scalding may occur if the lid is removed during the brewing cycles.

IMPORTANT SAFEGUARDS (cont'd)

14. To reduce the risk of fire or electric shock, do not remove the bottom cover on the appliance. No user serviceable parts inside. Call our toll-free customer assistance number for repair.

Warning: InstaBrew Single Serve Coffee Maker is never to be used on a range top.

Warning: Hot steam.

Caution: To reduce the risk of scalding, do not open lid when coffee is brewing.

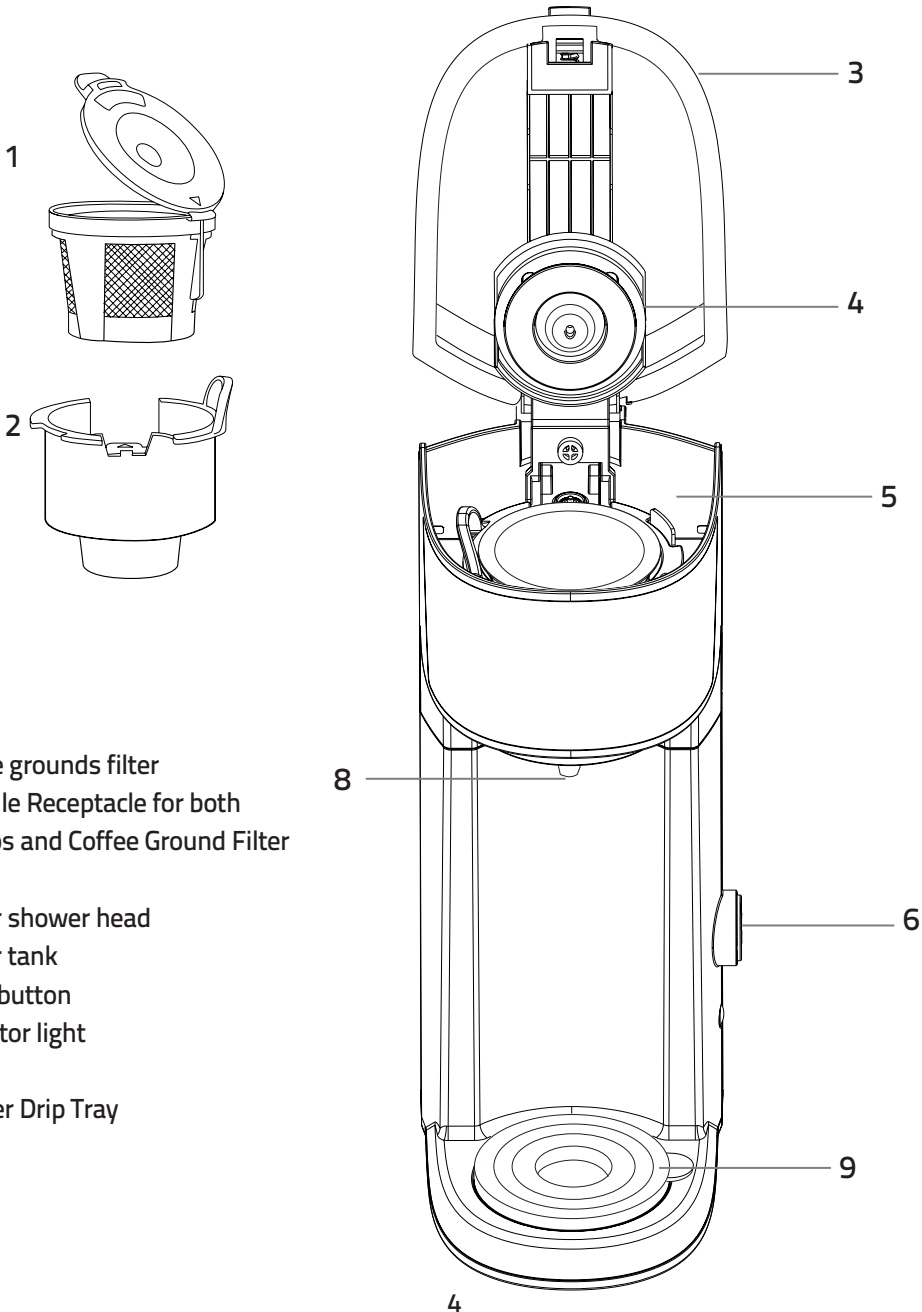
Warning: To reduce the risk of fire or electric shock, do not remove bottom cover.

No user-serviceable parts inside. Repair should be done by authorized service representative.

Warning: After brewing is finished turn off the appliance.

SAVE THESE INSTRUCTIONS

Features

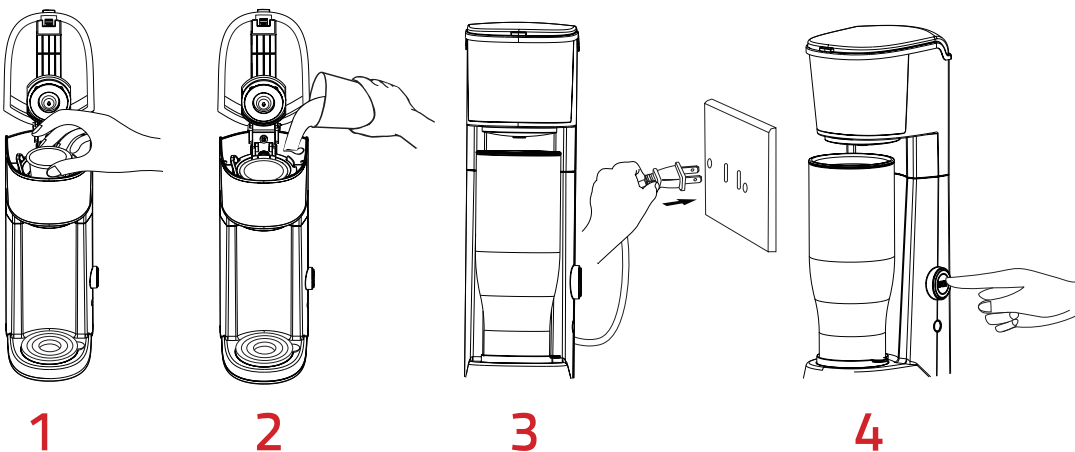


1. Coffee grounds filter
2. Capsule Receptacle for both K-Cups and Coffee Ground Filter
3. Lid
4. Water shower head
5. Water tank
6. Brew button
7. Indicator light
8. Spout
9. Rubber Drip Tray

Operating Instructions

USING YOUR COFFEE MAKER

Remove packing materials and read all instructions carefully before use. Before first use, run the machine with water and no coffee to ensure the unit is clean. Do not immerse the unit in water.



STEP 1: Place K-Cup or provided permanent coffee ground filter* into receptacle.

STEP 2: Add water to tank located behind capsule receptacle, under water shower head and close lid until you hear a clicking sound.

STEP 3: Connect unit to power supply.

IMPORTANT: Do not plug in this unit before water is added to tank.

STEP 4: Firmly press the 'BREW' button and enjoy!

*Fill provided coffee ground filter with ground coffee and close until it clicks. Place filter into the receptacle by aligning the "front" of the filter and the receptacle facing the user. No filters may be used other than the one provided. May cause injury to persons and damage to unit.

Note: Indicator light will turn on when coffee maker is plugged in. The indicator light will blink when brewing.

CAUTION: To avoid potential scalding, do not open lid while unit is in operation. We recommend not keeping your unit plugged in overnight or for long periods of time.

User Maintenance

CLEANING YOUR COFFEE MAKER

Proper maintenance will ensure years of service from your appliance. Clean the appliance after every use. This appliance contains no user serviceable parts and requires little maintenance.

Warning: Unplug the appliance and let it cool down completely before cleaning.

Caution: Do not immerse the coffee maker, or the power cord with plug into water or any liquids. Do not use abrasive pads or alcohol.

- Take out the permanent filter and receptacle from the coffee machine.
- Clean the housing with a clean, damp cloth.
- Use baking soda or a mild cleaning agent to remove stains in the receptacle. If stains are hard to remove, soak the receptacle overnight with a water/detergent mixture and clean afterwards.
- Make sure all parts are completely dry after washing and before use.
- After cleaning, reassemble the coffee maker.

Note: Do not dry the inside of the water tank with a cloth, as lint may remain.

Terms and Conditions

Limited Warranty

CHEFMAN® LLC warrants, subject to the conditions stated below, that from the date of purchase, this product will be free from mechanical defects for a period of ONE (1) year. CHEFMAN® LLC, at its option, will repair or replace this product found to be defective during the warranty period. Should this product become defective by reason of improper workmanship or material defect during the specified warranty period, CHEFMAN® LLC will repair or replace the same effecting all necessary parts replacements for a period of one year from the date of purchase. If product is no longer available we will replace it with a product of equal value. Transportation charges on parts, or products in whole, submitted for repair or replacement, under this warranty, must be borne by the purchaser. This warranty is void if the product is used for other than single-family household use or subjected to any voltage and waveform other than as specified on the rating label (e.g., 120V - 60 Hz).

This warranty is available to consumers only. You are a consumer if you own a CHEFMAN® product that was purchased at retail for personal, family or household use. Except as otherwise required under applicable law, this warranty is not available to retailers or other commercial purchasers or owners.

CONDITIONS: This warranty is valid for the original USA and Canada retail purchaser from the date of initial retail purchase and is not transferable. Keep the original sales receipt. Proof of purchase is required to obtain warranty service or replacement. Dealers, service centers, or retail stores do not have the right to alter, modify or in any way, change the terms and conditions of this warranty. Warranty registration is not necessary to obtain warranty on CHEFMAN® LLC Products. Save your proof of purchase receipt.

ABOUT YOUR PRODUCT WARRANTY: Most warranty repairs are handled routinely, but sometimes requests for warranty service may not be appropriate. For example, warranty service would NOT apply if the product damage occurred because of misuse, lack of routine maintenance, shipping, handling, 3rd party warehousing or improper installation. Similarly, the warranty is void if the manufacturing date or the serial number on the product has been removed or the equipment has been altered or modified. During the warranty period, the authorized service dealer, at its option, will repair or replace any part that, upon examination, is found to be defective under normal use and service.

NORMAL WEAR: This warranty does not cover normal wear of parts or damage resulting from any of the following: negligent use or misuse of the product; improper voltage or current; use contrary to the operation instructions; deviation from instructions regarding storage and transportation; repair or alteration by anyone other than CHEFMAN® LLC or an authorized service center. Further, the warranty does not cover Acts of God, such as fire, flood, hurricanes and tornadoes. CHEFMAN® LLC shall not be liable for any incidental or consequential damages caused by the breach of any express or implied warranty. Except to the extent prohibited by applicable law, any implied warranty of merchantability or fitness for a particular purpose is limited in duration to the duration of the above warranty. Some states, provinces or jurisdictions do not allow the exclusion or limitation of incidental or consequential damages or limitations on how long an implied warranty lasts, so the above limitations or exclusion may not apply to you. This warranty gives you specific legal rights, and you may also have other rights that vary from state to state or province to province.

HOW TO OBTAIN WARRANTY SERVICE: If your CHEFMAN® product should prove to be defective within the warranty period, we will repair it, or if we think necessary, replace it. To obtain warranty service, simply email customerservice@chefman.com or call our toll-free number 1-888-315-6553 for additional information from our Customer Service Representatives, or send the defective product to Customer Service at Chefman, 200 Performance Drive Suite 207, Mahwah, NJ 07495.

This warranty is effective for the time periods listed above and subject to the conditions provided for within this policy.

CALIFORNIA RESIDENTS ONLY:

California law provides that for In-Warranty Service, California residents have the option of returning a nonconforming product (A) to the store where it was purchased or (B) to another retail store which sells CHEFMAN® products of the same type. The retail store shall then, at its discretion, either repair the product, refer the consumer to an independent repair facility, replace the product, or refund the purchase price less the amount directly attributable to the consumer's prior usage of the product. If the above two options do not result in the appropriate relief to the consumer, the consumer may then take the product to an independent repair facility if service or repair can be economically accomplished. CHEFMAN® and not the consumer will be responsible for the reasonable cost of such service, repair, replacement, or refund for nonconforming products under warranty.

CHEFMAN® is a registered trademark of RJ BRANDS, .

Warranty Card

CHEFMAN®

InstaBrew Single Serve Coffee Maker

All data fields are required in order for us to process your request:

Model Number: _____

Full Name: _____

Address: _____



_____ Email: (if applicable) _____

Date of Purchase*: _____

*We recommend you keep the receipt with this warranty card

Retail Store of Purchase: _____

Description of Malfunction:

Return your completed warranty card to:

RJ Brands
200 Performance Drive
Suite 207
Mahwah, NJ
07495

AFTER SALES SUPPORT

  888-315-6553

 customerservice@chefman.com

MODEL: RJ14-SKG-IR

Phone lines available Monday to Friday, 9am-5pm EST

1-YEAR LIMITED WARRANTY



To log-in to ClubChefman.com follow the below steps:

1. Enter www.clubchefman.com into your web browser.
2. Click on "Sign Up Now".
3. Fill in the required information as prompted.
NOTE: "Place of Purchase" refers to the store at which you purchased your product.
4. Sign in using your User Name and Password.

CLUB CHEFMAN ACCESS CODE:

2131394

CHEFMAN®

Follow Us

