

PQI My Lockey, fingerprint USB dongle that designed for Windows Hello. Our driver have got WHQL certified and been ready on Windows Update.

How To Install driver

- Insert My Lockey to USB port.
- If your OS is Windows 10 version that build 1607 and connect to internet, it will automatically install driver from Windows Update, when dongle be inserted.
- Then can start to set up your fingerprint on Windows Hello.



Device Setup

Installing Synaptics WBDI



Please wait while Setup installs necessary files on your system. This may take several minutes.



Close

If your OS is **Not** Windows 10 version, you can go to next section to find the driver to install:

- Find “Biometric devices” from “Device Manager.”
- Click to device. →Click “ Search automatically for updated driver software ” to install driver.
- Then can start to set up your fingerprint on Windows Hello.

Home

Find a setting

Devices

Printers & scanners

Connected devices

Bluetooth

Mouse & touchpad

Typing

AutoPlay

USB

Microsoft XPS Document Writer

Let Windows manage my default printer

When this is on, Windows will set your default printer to be the one you used most recently at your current location.

On

Download over metered connections

To help prevent extra charges, keep this off so device software (drivers, info, and apps) for new devices won't download while you're on metered Internet connections.

Off

Related settings

[Devices and printers](#)

[Device manager](#)



- DESKTOP
- > Audio
- > Battery
- > Biometric
- > Bluetooth
- > Computer
- > Display
- > Display Adapters
- > DVD Drives
- > Mice
- > Monitors
- > Network Adapters
- > Other devices
- Unknown device

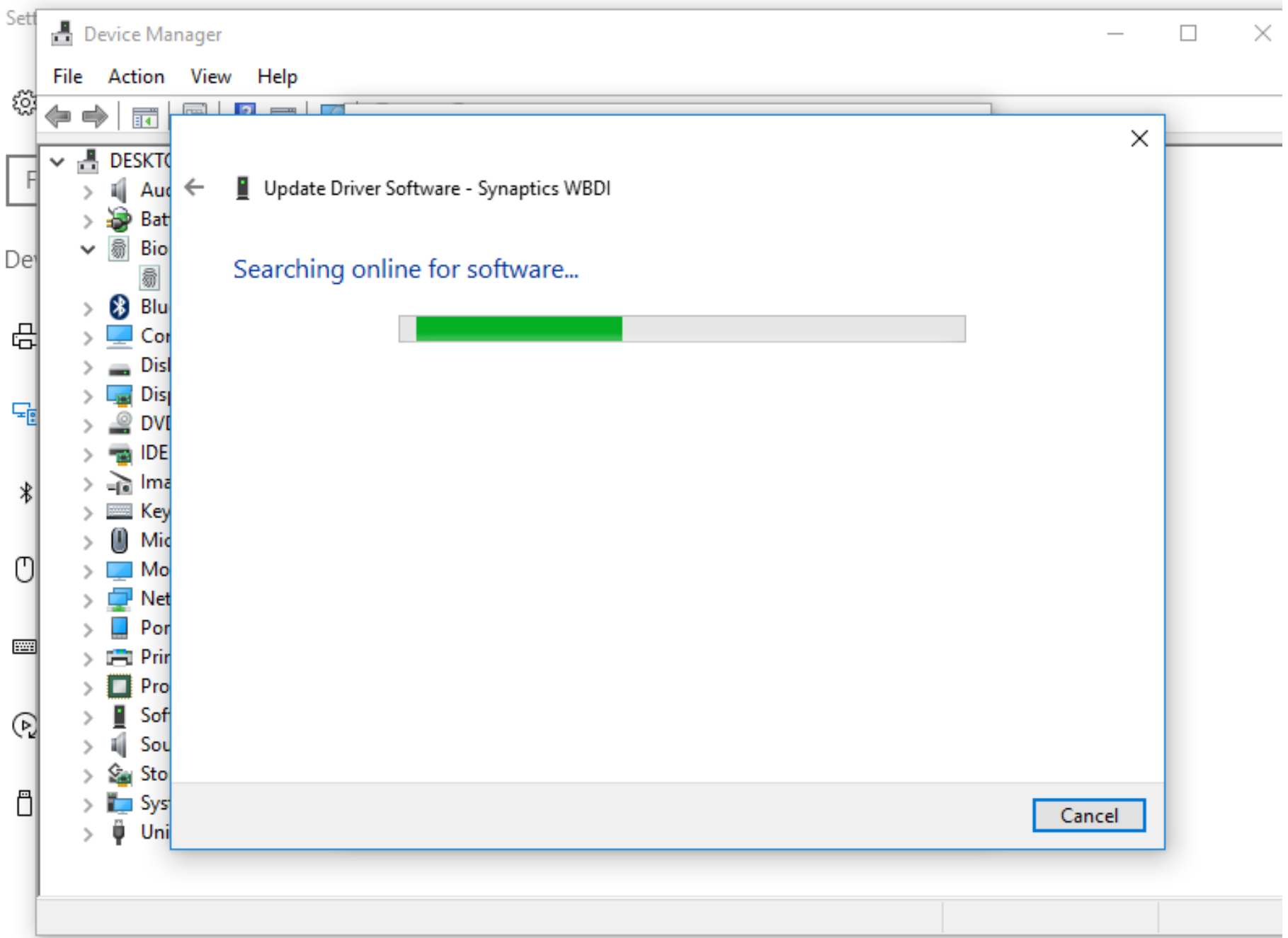
← Update Driver Software - Synaptics WBDI

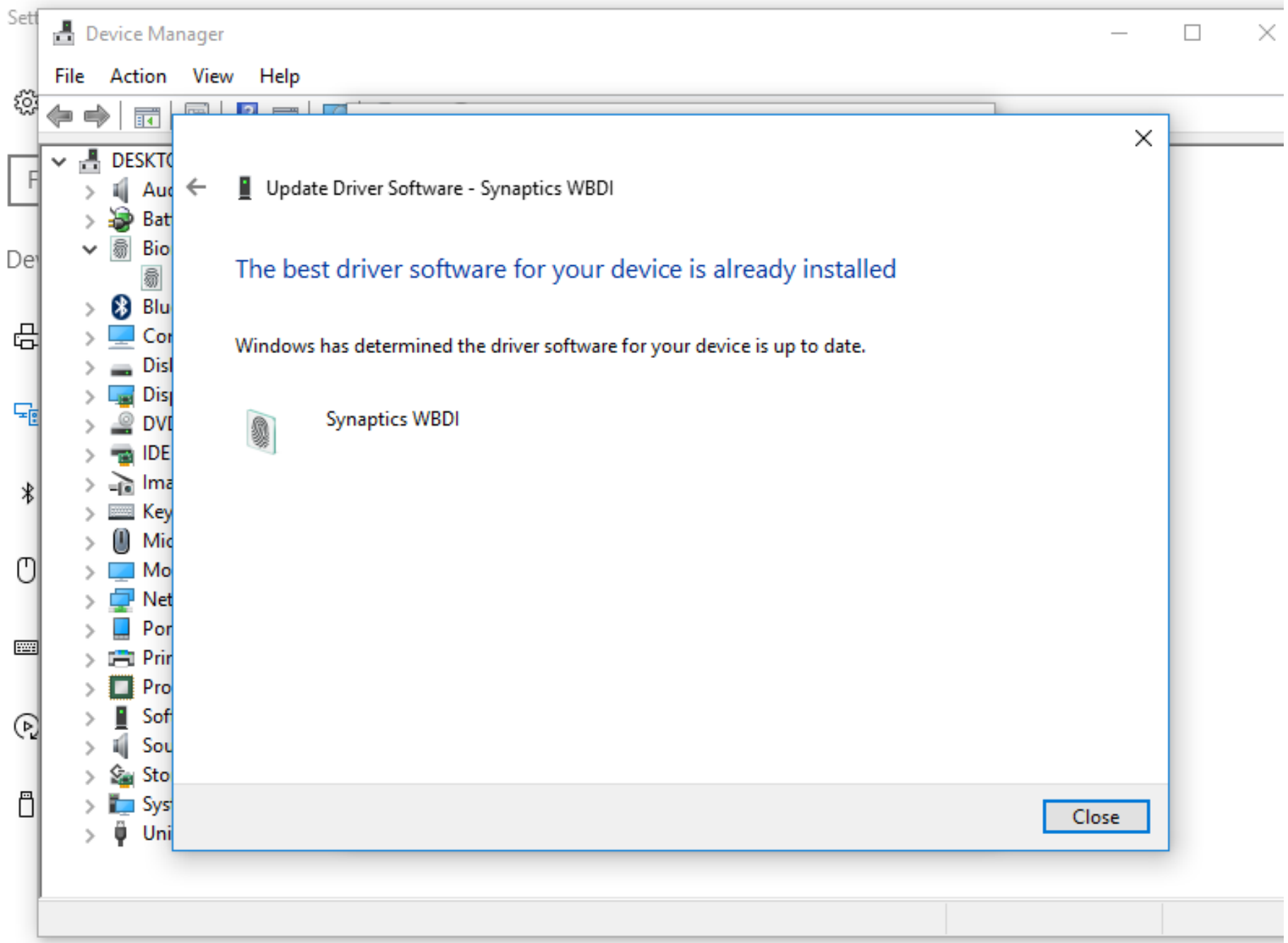
How do you want to search for driver software?

→ **Search automatically for updated driver software**
Windows will search your computer and the Internet for the latest driver software for your device, unless you've disabled this feature in your device installation settings.

→ **Browse my computer for driver software**
Locate and install driver software manually.

Cancel





Device Manager


File Action View Help

- DESKTOP
- > Audio
- > Battery
- > Biometric
 - Synaptics WBDI
- > Bluetooth
- > Communication
- > Display
- > DVD/Blu-ray
- > IDE
- > Imaging
- > Keyboard
- > Mouse
- > Monitor
- > Network
- > Ports
- > Printers
- > Processors
- > Software
- > Sound
- > Storage
- > System
- > Universal Serial Bus

Update Driver Software - Synaptics WBDI

The best driver software for your device is already installed

Windows has determined the driver software for your device is up to date.

 Synaptics WBDI

Close

How To Install driver **manually**.

- Download driver form: http://www.pqigroup.com/prod_driver.aspx?mnuid=1286&modid=138&prodid=1472
- Need to browser your driver folder from “ Device Manager.”
- Find “Biometric devices” from Device Manager.
- Click to device. →Click “Update Driver.”
- Search for driver in location by “Browse my computer for driver software”
- Install driver.
- Then can start to set up your fingerprint on Windows Hello.

Home

Find a setting

Devices

Printers & scanners

Connected devices

Bluetooth

Mouse & touchpad

Typing

AutoPlay

USB

Microsoft XPS Document Writer

Let Windows manage my default printer

When this is on, Windows will set your default printer to be the one you used most recently at your current location.

On

Download over metered connections

To help prevent extra charges, keep this off so device software (drivers, info, and apps) for new devices won't download while you're on metered Internet connections.

Off

Related settings

[Devices and printers](#)

[Device manager](#)



- DESKTOP-T64A
- Audio input
- Batteries
- Biometric devices
 - Synaptics WBDI
- Bluetooth
- Computer
- Disk drives
- Display adapters
- DVD/CD-ROM drives
- Mice and keyboards
- Monitors
- Network adapters
- Other devices
 - Bluetooth
 - Microsoft
 - Microsoft
 - Unknown
 - Unknown
 - Unknown
 - Unknown
 - Unknown
 - Unknown
 - Unknown
 - Unknown
 - Unknown
 - Unknown

Synaptics WBDI Properties

General Driver Details Events Power Management

Synaptics WBDI

Driver Provider: Synaptics Incorporated
Driver Date: 12/23/2016
Driver Version: 5.5.3100.52
Digital Signer: Synaptics Incorporated

To view details about the driver files.

To update the driver software for this device.

If the device fails after updating the driver, roll back to the previously installed driver.

Disables the selected device.

To uninstall the driver (Advanced).



Update Driver Software - Synaptics WBDI

How do you want to search for driver software?

→ Search automatically for updated driver software

Windows will search your computer and the Internet for the latest driver software for your device, unless you've disabled this feature in your device installation settings.

→ Browse my computer for driver software

Locate and install driver software manually.

Cancel

← Update Driver Software - Synaptics WBDI

Browse for driver software on your computer

Search for driver software in this location:

C:\Users\cooltim\Desktop\PQI-driver

Browse...

Include subfolders

→ Let me pick from a list of device drivers on my computer

This list will show installed driver software compatible with the device, and all driver software in the same category as the device.

Next

Cancel

DESKT

> Auc

> Bat

v Bio

Bio

> Blu

> Cor

> Dis

> Dis

> DVI

> IDE

> Ima

> Key

> Mic

> Mo

> Net

> Por

> Pri

> Pro

> Sof

> Sou

> Sto

> Sys

> Uni

← Update Driver Software - Synaptics WBDI

The best driver software for your device is already installed

Windows has determined the driver software for your device is up to date.

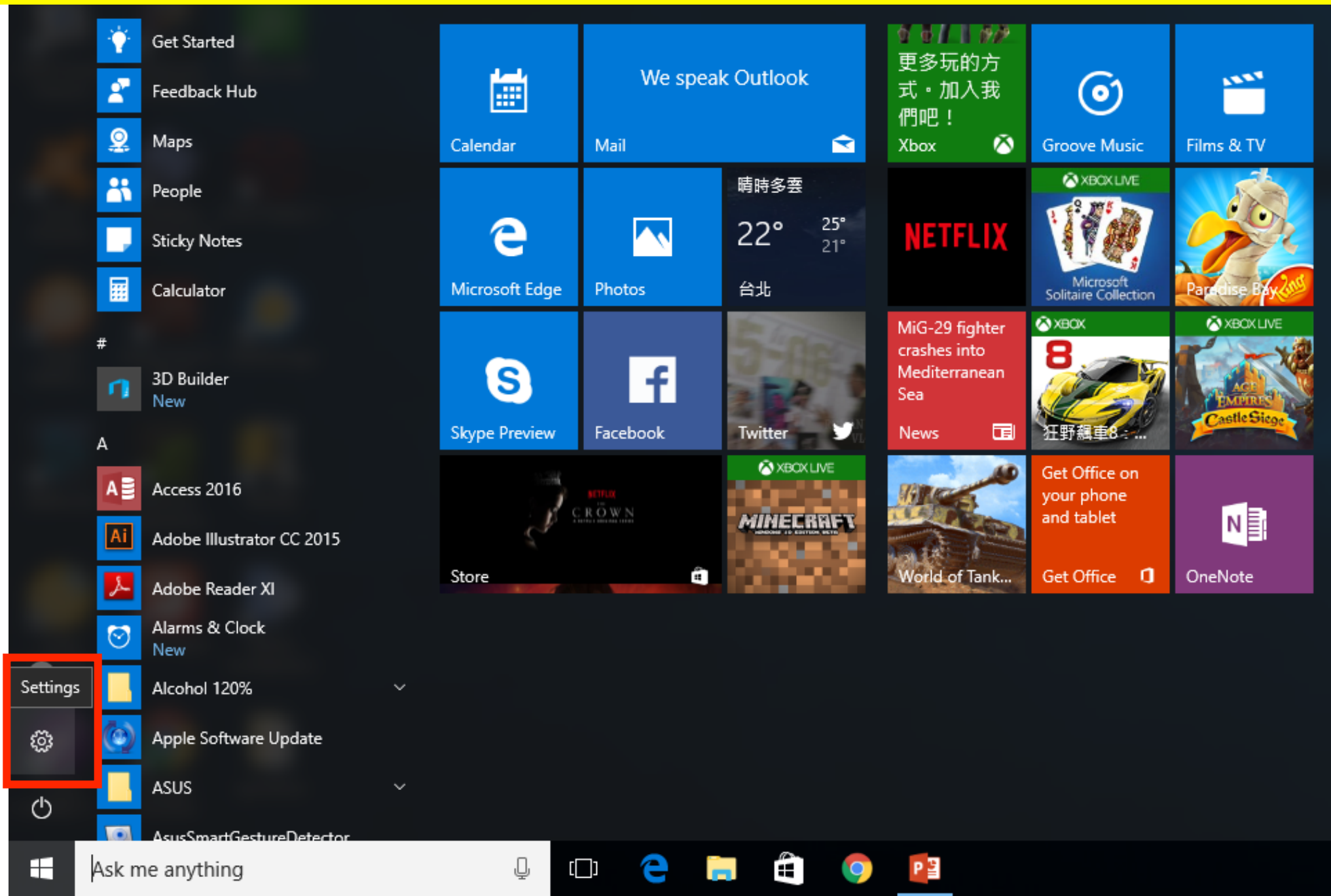


Synaptics WBDI

Close

Set up your fingerprint on Windows Hello

1. Start from "Settings"



2. "Accounts"

Windows Settings

Find a setting



System

Display, notifications, apps,
power



Devices

Bluetooth, printers, mouse



Network & Internet

Wi-Fi, airplane mode, VPN



Personalization

Background, lock screen,
colors



Accounts

Your accounts, email, sync,
work, family



Speech, region, date

Date & time



Narrator, magnifier, high contrast

Narrator



Privacy

Location, camera



Windows Update, recovery, backup

Recovery

3. "Sign-in Options" → Fingerprint "Setup"

The screenshot shows the Windows Settings application. On the left is a navigation pane with several options: Home, Find a setting (search bar), Accounts, Your info, Email & app accounts, Sign-in options (highlighted with a red box), Access work or school, Family & other people, and Sync your settings. The main content area is titled "Require sign-in" and contains a dropdown menu set to "When PC wakes up from sleep". Below this is the "Windows Hello" section, which includes a "Learn more about Windows Hello" link and a "Fingerprint" card with a "Set up" button (highlighted with a red box). At the bottom of the main area is the "Password" section with a "Change" button.

Home

Find a setting

Accounts

Your info

Email & app accounts

Sign-in options

Access work or school

Family & other people

Sync your settings

Require sign-in

If you've been away, when should Windows require you to sign in again?

When PC wakes up from sleep

Windows Hello

Sign in to Windows, apps and services by teaching Windows to recognize you.

[Learn more about Windows Hello](#)

Fingerprint

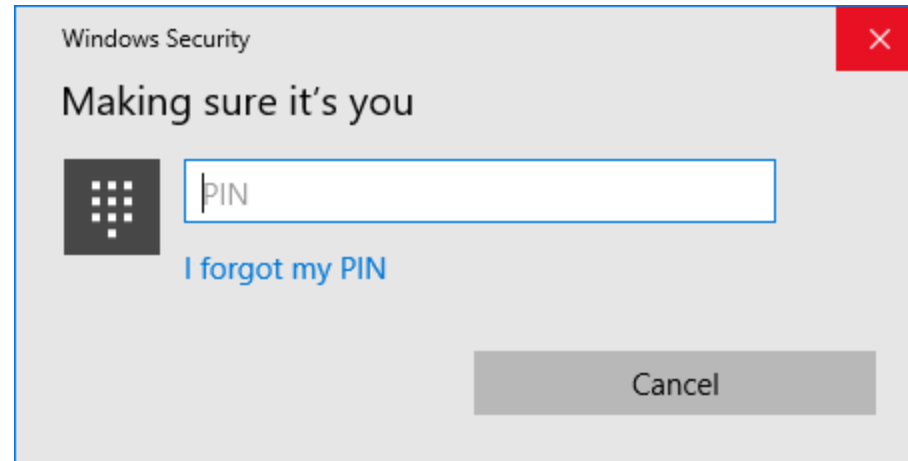
Set up

Password

Change your account password

Change

4. Need PIN code first (If not setup PIN code yet, Windows Hello will guide you to do.)



5. Register your fingerprint.

Welcome to Windows Hello

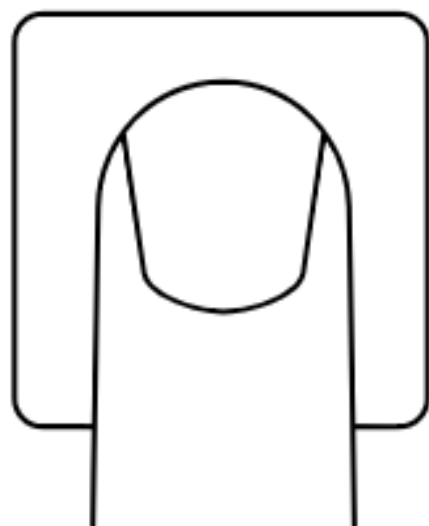
Your device just got more personal. Say goodbye to entering complex passwords and start using Windows Hello to unlock your device, verify your identity, and buy things in the Store using your fingerprint.

[Learn more](#)

Get started

Cancel

6. Following the UI instructions (touch, lift) to enroll.



Touch the fingerprint sensor

Repeatedly lift and rest your finger on the sensor until setup is complete.

Cancel



Your device is having trouble recognizing you.
Make sure your sensor is clean.

Cancel

Now try another angle

Rest and lift your finger at different angles to capture the edges of your print.

Next

Cancel



Now try another angle

Cancel

7. All Set! You can to register at least 2 fingerprints for the account, and also can register different fingerprint for different account.

All set!

Use your fingerprint the next time you want to unlock your device.

[Add another finger](#)

Close