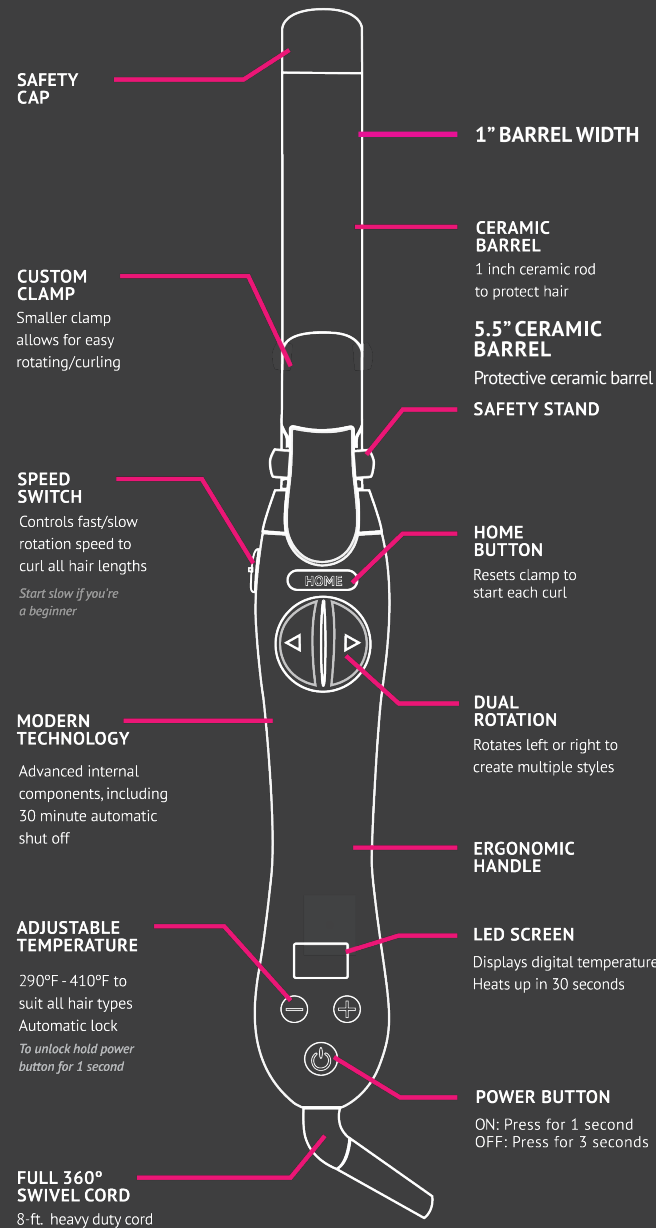


## DESCRIPTION OF THE BEACHWAVER® S1



This appliance has a polarized plug (one blade is wider than the other). As a safety feature, this plug will fit in a polarized outlet only one way. If the plug does not fit fully in the outlet, reverse the plug. If it still does not fit, contact a qualified electrician. Do not attempt to defeat this safety feature.

### OPERATION

To turn the BEACHWAVER®S1 on, press and hold the **ON/OFF** button for **1 second**. The temperature will illuminate to 350°F and can be adjusted by pressing the +/- buttons. It is important to always select the proper heat settings for your hair type. To unlock and adjust temperature press the Power button until it beeps and use the +/- buttons.

**Fine or damaged hair: 290°F - 330°F**  
**Medium or normal hair: 330°F - 370°F**  
**Thick or coarse hair: 370°F - 410°F**

### CHANGING ROTATION SPEED

To change rotation speed:  
 Switch button upward for **normal speed**.  
 Switch button downward for **slow speed**.

### ERROR MESSAGES

Error messages indicate an issue with the iron. After error displays and beeps all functions will stop. Error display will continue until unplugged from outlet. Please see below error messages.

**Error No. 1**  
With Alarm



Temperature Defect

**Error No. 2**  
With Alarm



Button Arrest  
(button continuously pressed)

**Error No. 3**  
With Alarm



Temperature Overheating

**Error No. 4**  
With Alarm



Low Temperature

**If any of the above error messages occur please do the following:**

1. Stop use at once.
2. Turn off and unplug from outlet. This will stop the power to the heaters. Retry in 10 minutes.
3. Press power button to reset.
4. If error message displays, ask the distributor for check and service.

### USER MAINTENANCE

The BEACHWAVER®S1 is virtually maintenance-free. If surface becomes dirty, unplug iron and when it is cool, wipe the exterior with a cloth. If anything abnormal occurs, contact an authorized service representative. Do not attempt to repair iron yourself.

**Attempting to repair iron yourself voids warranty.**

### STORAGE

When not in use, turn off and unplug the curling iron. Allow the iron to cool, and store out of reach of children in a safe, dry location. Never wrap the cord around the iron as this may cause premature wear of the cord and may lead to cord damage that is not covered under manufacturer's warranty. Handle the cord carefully to extend cord life, and avoid jerking, bending or twisting the cord, especially at the plug connection.

## WARRANTY

At The Beachwaver Co.™ we want you to be thrilled with our tools. We want you to look and feel beautiful. We believe in the quality of our tools and test each iron thoroughly. We welcome your feedback and in the event of any problem, we welcome the opportunity to make it right!

The Beachwaver Co.™ will replace your styling iron for one year from the date of purchase if the product is defective in materials or workmanship. In no event shall The Beachwaver Co.™ be liable for any special, incidental or consequential damages for breach of this or any other warranty, express or implied, whatsoever. Any implied warranties, obligations or liabilities, including but not limited to the implied warranty of merchantability and fitness for a particular purpose shall be limited in duration to the one year duration of this written limited warranty. **The warranty does not apply in the following scenarios: any unauthorized party opened the product in attempt to fix the product, normal wear and tear, purchasing from an unauthorized seller, damage caused by misuse or mishandling, or due to user's failure.** Warranty application is determined in the sole discretion of The Beachwaver Co.™

### YOU MUST REGISTER YOUR TOOL TO BE ELIGIBLE FOR WARRANTY!

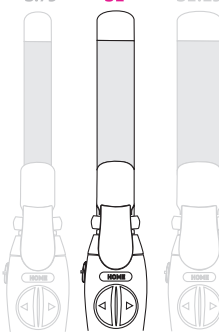
Please visit <http://www.beachwaver.com/pages/warranty> for information on how to register your iron or to make a warranty claim.



**ONLY WORKS WITH NORTH AMERICAN OUTLETS**

ALL AVAILABLE SIZES:

S.75 S1 S1.25



\*DO NOT USE WITH ADAPTERS OR CONVERTERS

# BEACHWAVER® S1

## CERAMIC ROTATING CURLING IRON

## INSTRUCTION MANUAL



# IMPORTANT SAFETY INSTRUCTIONS

When using electrical appliances, especially when children are present, basic safety precautions should always be followed, including the following:

## READ ALL INSTRUCTIONS BEFORE USING

### KEEP AWAY FROM WATER!

**DANGER**– As with most electrical appliances, electrical parts are electrically live even when the switch is off.

### To reduce the risk of death by electric shock:

1. Always “unplug” it immediately after using.
2. Do not use while bathing.
3. Do not place or store appliance where it can fall or be pulled into a tub or sink.
4. Do not place in or drop into water or other liquids.
5. If the appliance falls into water, “unplug” it immediately. Do not reach into water.

### WARNING :To reduce the risk of burns, electrocution, fire, or injury to persons:

1. An appliance should never be left unattended when plugged in.
2. Close supervision is necessary when this appliance is used by, on, or near children or individuals with certain disabilities.
3. Use the iron only for its intended use as described in this manual. Do not use attachments not recommended by the manufacturer.
4. Never operate this appliance if it has a damaged cord or plug, if it is not working properly or it has been dropped, damaged or dropped into water. Return the appliance to a service center for examination and repair.
5. Keep the cord away from heated surfaces. Do not wrap the cord around the appliance.
6. Never block the air openings of the appliance or place it on a soft surface, such as a bed or couch, where the air openings may be blocked. Keep the air openings free of lint, hair, and the like.
7. Never use while sleeping.
8. Never drop or insert any object into opening or hose.
9. Do not use outdoors or operate where aerosol (spray) products are being used or where oxygen is being administered.
10. Connect this appliance to a properly grounded outlet only. *See grounding instructions.*
11. Do not use an extension cord with this appliance.
12. This curling iron and clip are hot when in use. Do not let eyes and bare skin touch heated surfaces.
13. Do not place the heated curling iron directly on any surface while it is hot or plugged in. Use the stand provided.
14. Do not use if hair has been treated with flammable products, like hair spray.

15. Iron will be hot when in use.
16. Do not allow children to use.
17. Do not use iron when you are impaired in any way.
18. Iron must be completely cooled before storing.
19. Do not attempt to touch the hot surface of the iron, as it is hot and can cause injury, burns or pain.
20. Do not use with voltage converter.
21. Do not use without the assistance of a mirror.
22. Do not pull, twist or wrap cord around iron.

## SAVE THESE INSTRUCTIONS

### DO NOT USE WITH ADAPTER OR CONVERTER.

**WARNING:** The BEACHWAVER®S1 has a motorized function that, if impaired could cause serious pain or burns to the scalp. If used improperly or if product malfunctions, the digital temperature screen will display the letters **ERR**. (See Section “ERROR MESSAGES”) Discontinue use immediately. If the motor continues to rotate without the control of the Rotation Button, immediately release the clamp, slide hair out or turn off and unplug unit.

**WARNING:** POSSIBLE ELECTRIC SHOCK.  
DO NOT IMMERSE IN WATER OR USE WHILE BATHING

**WARNING:** The BEACHWAVER®S1 is an electrical appliance and reaches high temperatures. Use of iron requires constant supervision and should be kept away from water.

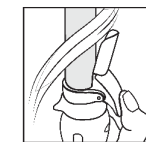
**ADVERTISSEMENT:** NE PAS PLONGER DANS L'EAU.  
**ADVERTISSEMENT:** Le décharge électrique possible, ne plongez pas ou utilisez en baignant.

This appliance is for use on a circuit having a nominal rating of (or more than 120 volts) and is factory equipped with a specific electric cord and plug to permit connection to a proper electric circuit. Make sure that the appliance is connected to an outlet having the same configuration as the plug. No adapter should be used with this appliance. Do not modify the plug provided; if it will not fit the outlet, have the proper outlet installed by a qualified electrician. If the appliance must be reconnected for use on a different type of electric circuit, the reconnection should be made by qualified service personnel.

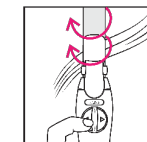
*This appliance is for household use.*



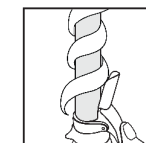
## JUST THREE EASY STEPS TO BEACHY WAVES™



**STEP 1**  
Open clamp and secure near ends of hair.



**STEP 2**  
Hold Arrow Button to start rotation. Release button to stop rotation.



**STEP 3**  
Hold for 2-3 seconds. Open clamp to remove curl.



**STEP 4**  
Press Home Button to reset clamp. Repeat for beautiful waves.

## THREE CURLS. ONE TOOL.



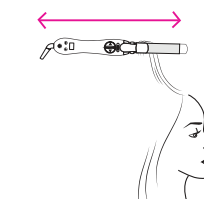
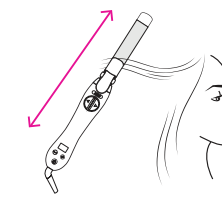
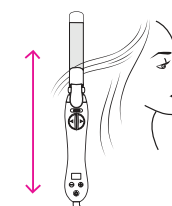
**BEACHWAVES™:**  
Hold barrel vertical



**DEFINED CURLS:**  
Hold barrel diagonal

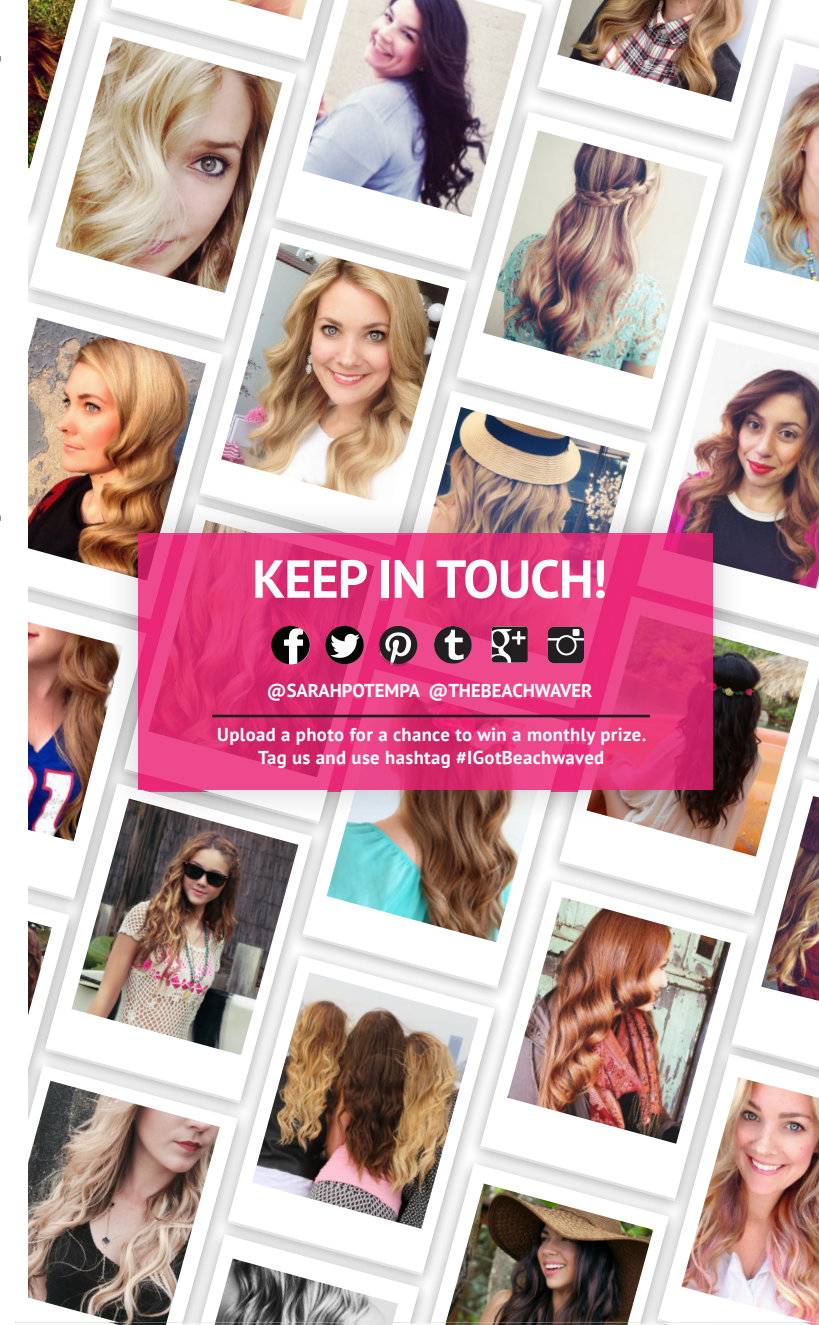


**VINTAGE WAVES:**  
Hold barrel horizontal



For tips and tricks on Beachywaves™ visit: [BEACHWAVER.COM](http://BEACHWAVER.COM)

Or scan the QR code



## KEEP IN TOUCH!



@SARAHPOTEMPA @THEBEACHWAVER

Upload a photo for a chance to win a monthly prize.  
Tag us and use hashtag #IGotBeachwaved