

材质: 封面封底128G双铜+ 单色印刷
 内页臻品上质80g高白纸 2个小号骑马钉
 大约16页, 尺寸W 105 x H 75mm



User Manual

Wireless Receiver for Headphones

Clipper Pro



www.avantree.com

Contents

| | |
|---|-----|
| 1. AptX Low Latency | 1 |
| 2. Product overview & basic operation | 2 |
| 3. What's in the box? | 4 |
| 4. Pairing and connecting | 5 |
| 4.1. Connecting to a mobile phone/tablet | 5-6 |
| 4.2. Connecting to a Bluetooth transmitter | 6-7 |
| 4.3. Connecting to two Bluetooth devices simultaneously | 7-8 |
| 5. How to reset to factory default setting? | 8 |
| 6. LED indications | 9 |
| 7. Charging | 10 |
| 8. Product Specifications | 11 |

1. AptX Low Latency

Avantree Clipper Pro is a Bluetooth audio receiver incorporating the latest "aptX low latency" technology, for CD-like quality sound and with virtually no audio delay. Ideal for games, watching TV and movies without lip sync delay.

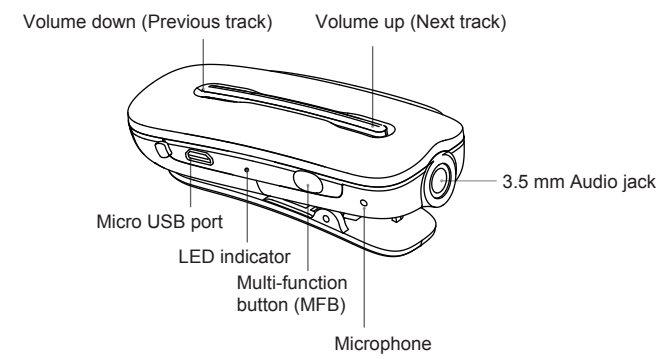
aptX® Low Latency

To take advantage of the better performance offered by APTX low latency codec, the other device must also support the same codec (Such as Avantree's Saturn Pro, Priva II, Leaf, etc). If the transmitter only supports the normal AptX codec, or the SBC one, these codecs will be used instead.

| Audio delay by transmitter type - | |
|---|-------------------------|
| Transmitter support - | The audio delay will be |
| aptX Low Latency codec | Around 40ms |
| aptX codec | Around 180ms |
| SBC codec (most standard Bluetooth audio) | Around 250ms |

- 1 -

2. Product overview & basic operation



- 2 -

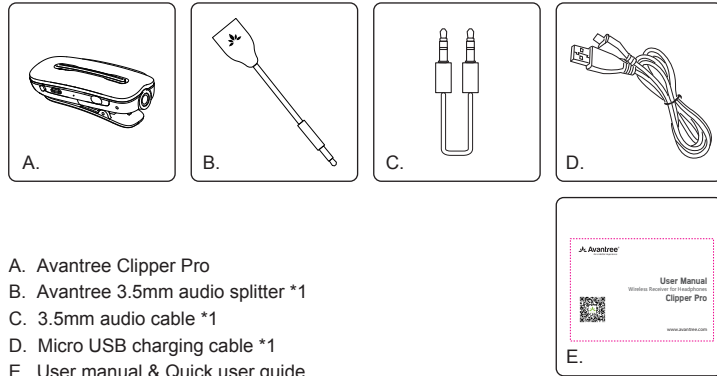
Basic operation

| Button | Function | Operation |
|--------|-----------------------------|--|
| | Power on/off | Hold MFB for 2~3 seconds to turn Clipper Pro on/off |
| | Enter pairing mode | From off mode, press & hold for 6 seconds until the LED indicator flashes BLUE and RED alternately. |
| MFB | Answer/End a call | Press MFB once when a call is incoming or in progress |
| | Reject a call | Press & hold MFB for 2 seconds when a call is incoming |
| | Last number redial | Double click MFB |
| | Play/Pause | Press once MFB when streaming music |
| V+ | Volume up | Press V+ once |
| | Next track | Press and hold |
| V- | Volume down | Press V- once |
| | Previous track | Press and hold |
| | Mute ON | Press and hold V- for 1 second |
| | Voice Dial (Siri) | Press V+ and V- together once |
| V+& V- | Restore to default settings | Press and hold V+ and V- together for 7 seconds, the LED flashes BLUE and RED together (appears PINK) |

Note: Some functions may not work when used with different mobile phones or other Bluetooth devices.

- 3 -

3. What's in the box?

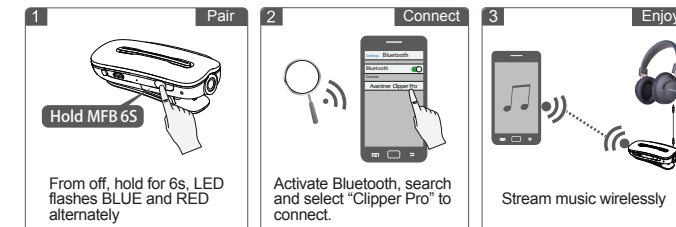


- 4 -

4. Pairing and connecting

4.1. Connecting to a mobile phone/tablet

- Ensure Clipper Pro is off.
- Set Clipper Pro to PAIRING MODE (Press and hold MFB for 6 seconds until the LED flashes BLUE and RED alternately).
- Activate Bluetooth on your phone/tablet and select "Avantree Clipper Pro" to connect.



- 5 -

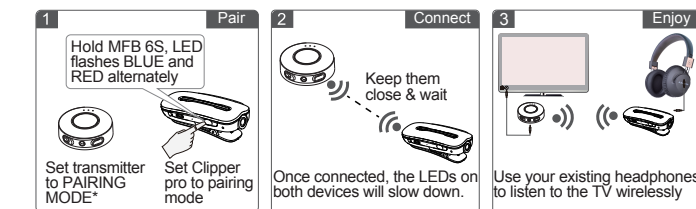
Reconnect:

Whenever you turn Clipper Pro on again, it will automatically reconnect to your phone.

4.2. Connecting to a Bluetooth transmitter

- Ensure Clipper Pro is off.
- Set Clipper Pro to PAIRING MODE – Press and hold MFB for 6 seconds until the LED flashes BLUE and RED alternately.
- Set your Bluetooth transmitter to PAIRING MODE**.
- Keep the devices close and wait for 5~30 seconds. Once connected, the LEDs on both devices will slow down.

- 6 -



**PAIRING MODE: Discoverable mode for Bluetooth device, normally the LED blinks quickly or flashes between two colors alternately.

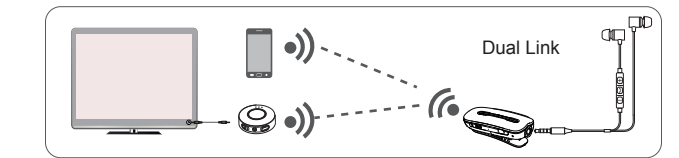
4.3. Connecting to two Bluetooth devices simultaneously

- Connect the first Bluetooth device as above. Then turn off Clipper Pro.
- Set Clipper Pro to PAIRING MODE again – Press and hold MFB for 6 seconds until the LED flashes BLUE and RED alternately.
- Connect Clipper Pro to the second Bluetooth device as above.

- 7 -

- Once connected, turn Clipper Pro off and on again. It will then automatically reconnect to the two devices simultaneously.

Note: Once disconnected over 10 minutes, Clipper Pro will automatically power itself off.



5. How to reset to factory default setting?

- Turn on the Clipper Pro
- Press and hold the V+ and V- button for 5 seconds
- The Blue and Red LED will flash twice then power off at the same time

- 8 -

6. LED indications

| Status | LED indicator |
|----------------------------|--|
| Power on | LED flashes BLUE for 2 seconds |
| Power off | LED flashes RED for 2 seconds |
| Pairing mode | LED flashes BLUE and RED alternately |
| Connected | LED flashes BLUE once every 10 seconds |
| Disconnected | LED flashes BLUE twice every 10 seconds |
| Restore to default setting | LED flashes BLUE and RED together twice (appears PINK) |
| Low battery | LED flashes RED once every 30 seconds |
| Charging | LED stays RED |
| Fully charged | Red LED turns off |

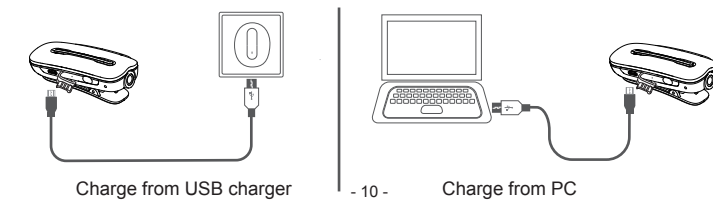
- 9 -

7. Charging

When the LED flashes RED, you should recharge the device. Please remove the micro-USB protector and charge it. It normally takes around 2 hours to fully charge the battery. The LED will stay RED when charging and will turn off when charging is complete.

Charging Requirement

You can connect Clipper Pro via the supplied micro USB cable to your own USB chargers (wall charger/travel charger/car charger, etc.) with 5V/500mA-1A or PC USB port. It's ok to use most mobile phone chargers on the market.



- 10 -

8. Product Specifications

- BT version: 4.2
- BT profile: A2DP, AVRCP, HFP, HSP
- Audio codec: aptX Low Latency, aptX, SBC
- Operational range: Class II, up to 10 meters
- Working time: Up to 6 hours
- Standby time: 100 hours
- Charging time: 2 hours
- Product weight: approx. 15g
- Product size: 50.5*26*18mm

Note: The talk and standby times may vary when used with different mobile phones or other devices and also dependent upon different usage styles, settings and operating environment.

- 11 -

Video user guide for Clipper Pro is available on Youtube.com
 Telephone support: booking from Avantree.com
 More FAQs and instructions on support.avantree.com
 Email support: support@avantree.com

Avantree US Customer Service Line: 800 232 2078
 Avantree Europe Customer Service Line: +1 408 600 0579

- 12 -

Dispose of the packaging and this product in accordance with the latest provisions.



www.avantree.com
 support@avantree.com

Z-PKMN-ASTL-V1