

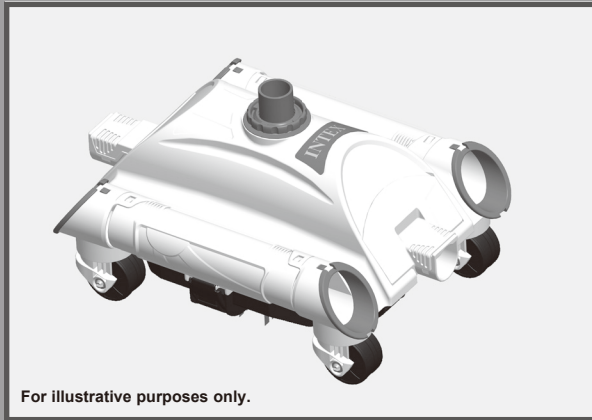
English

198  
PO

## IMPORTANT SAFETY RULES

Read, understand, and follow  
all instructions carefully before  
installing and using this product.

# Auto Cleaner



Don't forget to try these other fine Intex products: pools, pool accessories, inflatable pools and in-home toys, airbeds and boats available at fine retailers or visit our website.

Due to a policy of continuous product improvement, Intex reserves the right to change specifications and appearance, which may result in updates to the instruction manual without notice.



## IMPORTANT! DO NOT RETURN PRODUCT TO STORE

To purchase parts and accessories or to obtain non-technical assistance, visit

[www.intexcorp.com](http://www.intexcorp.com)

For technical assistance and missing parts call us toll-free (for U.S. and Canadian Residents):

**1-800-234-6839**

Monday through Friday, 8:30am to 5:00pm Pacific Time

198-PO-R0-1406

OWNER'S MANUAL

# TABLE OF CONTENTS

<b>Warnings.....</b>	<b>3</b>
<b>Parts Reference.....</b>	<b>4</b>
<b>Set Up Instructions .....</b>	<b>5-6</b>
<b>Operating Instructions .....</b>	<b>6</b>
<b>Debris Net Cleaning.....</b>	<b>7</b>
<b>Troubleshooting Guide.....</b>	<b>8</b>
<b>Long Term Storage.....</b>	<b>8</b>
<b>General Aquatic Safety.....</b>	<b>9</b>

# IMPORTANT SAFETY RULES

Read, Understand and Follow All Instructions Carefully Before Installing and Using this Product.



## WARNING

- TO REDUCE THE RISK OF INJURY, DO NOT PERMIT CHILDREN TO USE THIS PRODUCT.
- DO NOT OPERATE THE FILTER PUMP WHILE THE POOL IS OCCUPIED OR IN USE.
- REMOVE THE PRODUCT FROM THE POOL WHILE THE POOL IS OCCUPIED OR IN USE.
- TURN OFF OR UNPLUG THE FILTER PUMP BEFORE ADJUSTING, CLEANING OR SERVICING.
- REMOVE THE PRODUCT FROM THE POOL BEFORE PLACING A POOL COVER OVER THE POOL.
- STORE THE PRODUCT AND ACCESSORIES IN A DRY AND SAFE PLACE INDOORS.
- FOR POOL AND FILTER PUMP PROBLEMS REFER TO THEIR RESPECTIVE OWNER'S MANUAL FOR ADVICE.

**FAILURE TO FOLLOW THESE WARNINGS MAY RESULT IN PROPERTY DAMAGE, SERIOUS INJURY OR DEATH.**

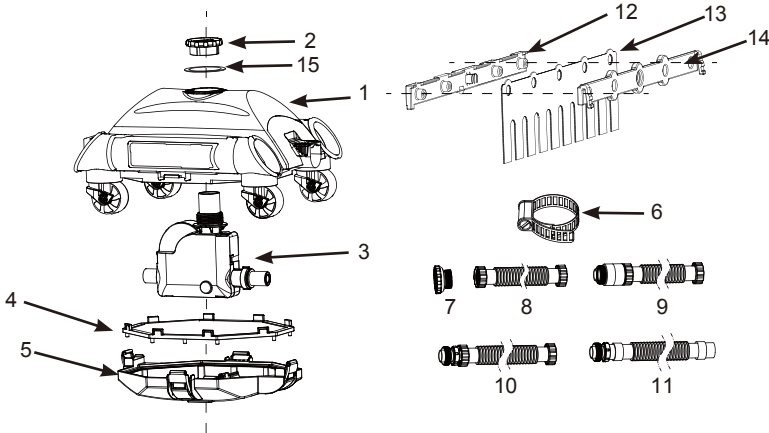
This Filter-Pump system is intended to be used only for the purposes described in the manual! Failure to follow all product, package and package insert safety and installation instructions could result in electric shock, entanglement, other serious injury or death.

**Filter Pump Flow Rate Requirement:**

1200 - 3500 gallons/hour (4542 - 13248 liters/hour)

## PARTS REFERENCE

Before assembling your product, please take a few minutes to check the contents and become familiar with all the parts.



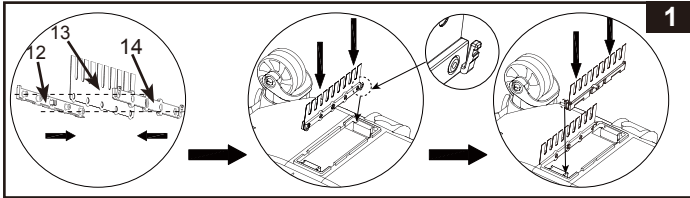
**NOTE:** Drawings for illustration purpose only. Actual product may vary. Not to scale.

REF. NO.	DESCRIPTION	QTY.	SPARE PARTS NO.
1	CLEANER TOP	1	11749
2	COLLAR NUT	1	11569
3	GEAR MODULE	1	11566
4	DEBRIS NET	1	11751
5	CLEANER BASE	1	11750
6	HOSE CLAMP	1	10272
7	HOSE ADAPTOR	1	11239
8	HOSE A	1	10850
9	HOSE B	3	10851
10	HOSE C	3	10852
11	HOSE D	1	10957
12	BRUSH SUPPORT A (WITH 2 EXTRA)	4	11493
13	BRUSH (WITH 10 EXTRA)	12	11567
14	BRUSH SUPPORT B (WITH 2 EXTRA)	4	11494
15	EXHAUST RING PLATE	1	11752

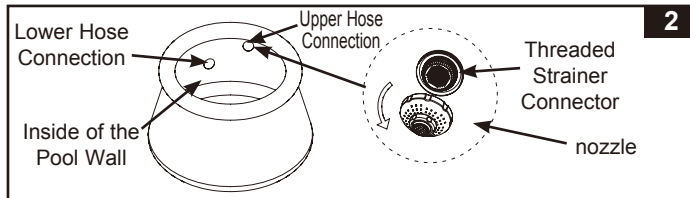
# SAVE THESE INSTRUCTIONS

# SETUP INSTRUCTIONS

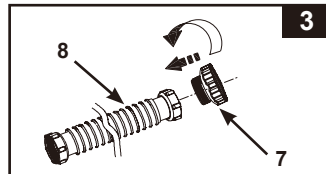
1. Brush assembly. See Fig. 1.



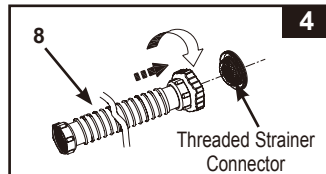
2. From inside of the pool, unscrew the nozzle from the water return connector (upper hose connection). See Fig. 2.



3. Screw the hose adaptor (7) to hose A (8). See Fig. 3.



4. Screw the end of hose A (8) with adaptor to the threaded strainer connector, from inside of the pool. See Fig. 4.



5. Connect the rest of the hoses together outside the pool, in the order of hose description (See Fig. 5), B-C-B-C-B-C-D or B-C-B-D.

**5**

For Round pool size above 18' or Rectangular pool size 12' and above

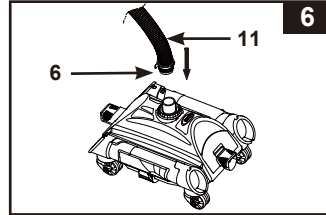
(B) (C) (B) (C) (B) (C) (D)

For Round pool size 18' and below or Rectangular pool size below 12'

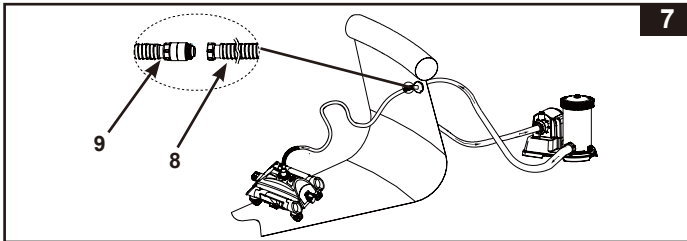
(B) (C) (B) (D)

## SETUP INSTRUCTIONS (continued)

- With hose clamp (6), fasten the end of hose D (11) to the top connection of cleaner. A small coin can be used to tighten the hose clamp. See Fig. 6.
- Place auto cleaner into the water. Fill up the hose assembly with water by submerging the hose into the water to remove all of the entrapped air from the hose.



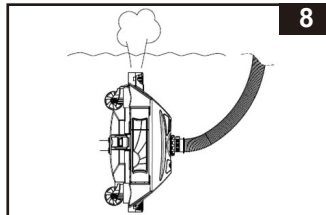
- Connect hose B (9) from the hose assembly to the hose A (8) which was already installed in step 4. See Fig. 7.  
**IMPORTANT:** Run the filter pump for 10-15 minutes before connecting the auto cleaner to the water return connector.



- Set up the Filter Pump following the Filter Pump owner's manual. The auto cleaner is now ready to use.

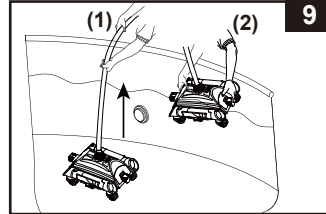
## OPERATING INSTRUCTIONS

- The filter pump is an airtight system. In a counter-clockwise motion turn the top air release valve 1 – 2 turns to open it.
- When water starts flowing out of the air release valve hole, screw in the air release valve back into the filter housing cover. Do not over tighten the valve.
- Connect the filter pump to the power outlet and turn ON the pump.
- Hold the auto cleaner upside down below the water surface to jet out the water. See Fig. 8. This will evacuate all the air in the hose and auto cleaner, so the cleaner will sink to the bottom and keep the pool clean.

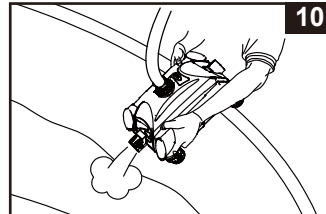


## DEBRIS NET CLEANING

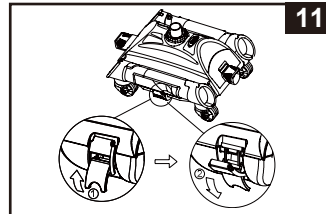
1. Make sure the filter pump is turned off, and disconnect the power cord from the electrical outlet.
2. Lift the auto cleaner's hose slowly then hold the auto cleaner up with both hands. See Fig. 9.  
**CAUTION:** Do not pull the hose directly which could damage the auto cleaner hose connection fitting.



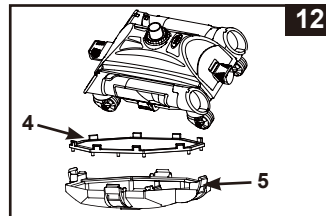
3. Grasp the cleaner base with two hands, lift the auto cleaner up slowly with an angle (either head or tail up). See Fig.10. After the water has been fully released from the auto cleaner, carry the auto cleaner out from the pool.



4. Unlock the four buckles located on the four sides. See Fig. 11.



5. Remove the debris net (4) from the cleaner base (5). If debris is on the debris net and cleaner base, use garden hose to flush the debris off. See Fig. 12.



6. Reassemble auto cleaner reversing steps 1, 2 and 3.

## TROUBLESHOOTING GUIDE

- Q.** What should I do if Auto Cleaner doesn't move or movement is very slow?
- A.**
1. Pull the cleaner's hose and lift auto cleaner off from the wrinkles.
  2. Check the circulation line:
    - i. Ensure the filter pump is turned on.
    - ii. Ensure the plunger valves are opened.
    - iii. Clean or replace cartridge.
    - iv. If using a sand filter, ensure the sand media is clean by backwashing it.
- Q.** What should I do if Auto Cleaner lifts off from the pool floor?
- A.** Release air from the auto cleaner by following the "Owner's Manual".
- Q.** What should I do if the Auto Cleaner can not pick up the leaves from the pool floor?
- A.**
1. Remove the brushes from the underside and put the Auto Cleaner back into the pool.
  2. Clean all the debris from the Auto Cleaner after running for 2-3 hours continuously.

## IMPORTANT

**If you continue to experience difficulty, please contact our Consumer Service Department for assistance. See separate "Authorized Service Centers" sheet.**

## LONG TERM STORAGE

1. Make sure the filter pump is turned off, and disconnect the power cord from the electrical outlet.
2. Using the Set Up instructions in reverse, disassemble the auto cleaner.
3. Clean and air dry all the accessories and parts thoroughly.
4. Keep the hoses straight during storage.
5. Remove the brushes and keep them flat and straight during storage.
6. The original packaging can be used for storage. Store in a dry, cool storage location.

## GENERAL AQUATIC SAFETY

**Water recreation is both fun and therapeutic. However, it involves inherent risks of injury and death. To reduce your risk of injury, read and follow all product, package and package insert warnings and instructions. Remember, however, that product warnings, instructions and safety guidelines cover some common risks of water recreation, but do not cover all instances or risk and or danger.**

**For additional safeguards, also familiarize yourself with the following general guidelines as well as guidelines provided by nationally recognized Safety Organizations:**

- Demand constant supervision.
- Learn to swim.
- Take the time to learn CPR and first aid.
- Instruct anyone who is watching your children about potential pool hazards and about the use of protective devices such as locked doors, barriers, etc.
- Teach children what to do in case of an emergency.
- Always use common sense and good judgement when enjoying any water activity.
- Supervise, Supervise, Supervise.

**For additional information on safety, please visit**

- **The Association of Pool and Spa Professionals: The Sensible Way to Enjoy Your Aboveground/Onground Swimming Pool** [www.nspi.org](http://www.nspi.org)
- **American Academy of Pediatrics: Pool Safety for Children** [www.aap.org](http://www.aap.org)
- **Red Cross** [www.redcross.org](http://www.redcross.org)
- **Safe Kids** [www.safekids.org](http://www.safekids.org)
- **Home Safety Council: Safety Guide** [www.homesafetycouncil.org](http://www.homesafetycouncil.org)
- **Toy Industry Association: Toy Safety** [www.toy-tia.org](http://www.toy-tia.org)