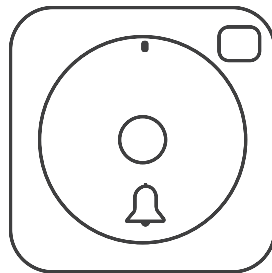


### Disclaimer and Waiver of Liability:

Once users have successfully installed and enabled corresponding features, users are considered to understand and acknowledge all functions(includes but not restricted to camera, audio, and live video). Netvue Technologies Co.,Ltd is not responsible of any legal disputes related to information recorded and/or stored by its products.



For more detailed user's guide,

Please visit [www.Vuebell.com](http://www.Vuebell.com)

Version 1.5

2017 Netvue Technologies Co.,Ltd

All rights reserved

# vuebell

WiFi Video Doorbell

## QUICK START GUIDE



App Store



Android

# QUICK START GUIDE

## Warning

This equipment has been tested and found to comply with the limits for a Class B digital device, pursuant to Part 15 of the FCC Rules. These limits are designed to provide reasonable protection against harmful interference when the equipment is operated in a commercial environment. This equipment generates uses and can radiate radio frequency energy and, if not installed and used in accordance with the instructions, may cause harmful interference to radio communications.

## FCC radiation exposure statement

The antennas used for this transmitter must be installed to provide a separation distance

of at least 20 cm from all persons and must not be co-located for operating in conjunction with any other antenna or transmitter.

## FCC (USA) 15.9 prohibition against eavesdropping

Except for the operations of law enforcement officers conducted under lawful authority, no person shall use, either directly or indirectly, a device operated pursuant to the provision of this part for the purpose of overhearing or recording the private conversations of other unless such use is authorized by all of the parties engaging in the conversation.

## CE RED

This product can be used across EU member states.

## How VueBell works?.

The VueBell outdoor unit remains in a standby state with all LED indicators in the off state if no activity is detected except for the built-in PIR sensor which is constantly monitoring for activity day or night. Once activity has been detected within 3 meters, all monitoring function and features become active. The built in day and night vision camera in VueBell will begin to take snapshots of the event. Photos of the event will be saved on a cloud storage service for user' s access. The event will trigger a notification on the user' s mobile device which will lead them directly to the photos.

When a homeowner, visitor, neighbor, or delivery person approaches VuBell, PIR captures the event and triggers the camera and the bell-shaped touch button will light up (Blue). The bell shaped button is press to ring the bell, it will then send a signal to the smart mobile device and the indoor music chime to

sound. User will receive a notification on their smart phone/mobile device with a picture of the event and with the option to start a live chat with the visitor through VueBell. User will also be able to unlock the door through Vue-Bell application (Optional feature).



APP Store



google play

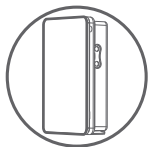
## APP Set-up

Download VueBell APP from APP store or Google play market.

# Packing list



1. outdoor unit



2. indoor music chime



3. accessories



4. location label

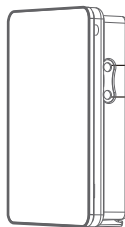


5. quick start guide



6. sticker

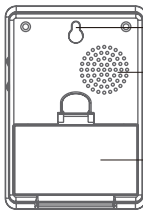
## Names for parts



Melody Selector

Volume Button

Chime front side



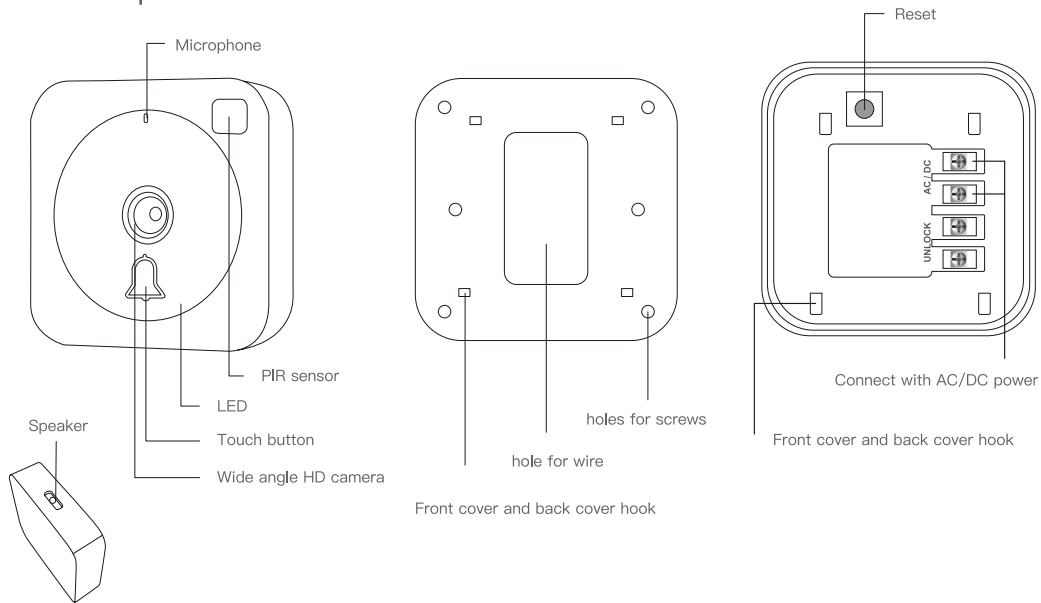
Hanging Hole

Speaker

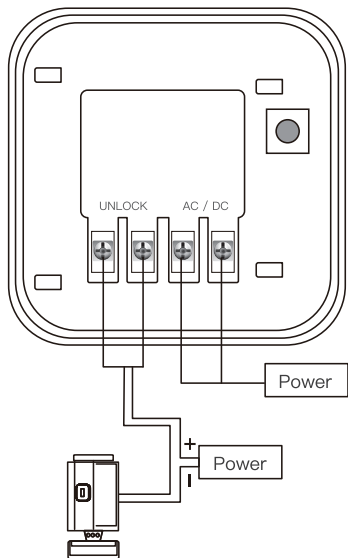
Battery Cover

Chime back side

## Name of parts

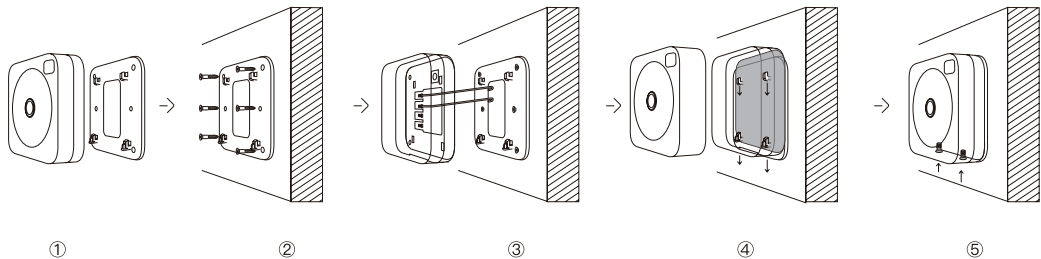


## Wiring diagram



## Read before Installing

1. Please note that installation tools such as power drills and screwdrivers are required for installation but not supplied in this package.
2. Please try to avoid installing the unit close to metal frames since metal can absorb radio waves and weaken the radio reception.
3. Do not install the product in extreme temperature conditions or humid environments (such as kitchen or bathroom).
4. The range of operating voltage from the power supply/transformer: 8–24VAC, 9–36VDC, and polarity is not required.
5. Please install unit where it does not directly place the CCD camera to the sunlight.



## Installation Procedures

1. Replace outdated doorbell system using the existing power transformer and wire/cable by mounting it at the same location:

Turn off the power at the main circuit breaker panel or Fuse box. Remove existing doorbell button connect new VueBell using the existing wire/cable.

Turn the power on and see if VueBell powers up. If you are replacing an old coil-type bell/chime, it should work without doing any further reconfiguration. If you are replacing a electronic musical bell/chime you will need to short the two wires connecting power to the bell by connecting them together with a wire nut, or tie both wires together on one wire terminal. This will bypass the existing doorbell/chime and directly connect the VueBell with existing transformer/power supply.

2. For new installation run a 2 conductors wire #22–18 AWG US/standard wire size connected to an AC power transformer (8–24VAC) or DC adapter (9–36VDC).

Below are optional VueBell connections:

a)VueBell can be connected to your facility/house existing Alarm Control using the AUX 12VDC power, or PIR detector/Keypad power e.g.

b)VueBell can be connected to your standard CCTV Camera 12VDC or 24VAC power supply/transformer.

c)VueBell can be connected to a 12 to 24 AC power wall adaptor/transformer outlet.

–Install the security screws.(step⑤)

–Wait 40 seconds for the VueBell system to be ready.

In cases where two old bell buttons exist(one for the front door and one for the back door), follow the same procedures and disregard the second bell button. To install a second VueBell, simply repeat step 3 for installation of the second VueBell device.

3. Once above steps and set-up are done, users can mount the VueBell by using all provided installation kit. Please refer to initial setup:

①and② –Connect each of the two wires to one of the top two screws (which marked “AC/DC Power) on the back of VueBell. The blue-colored bell-shaped touch pattern will light up.

③ –Place the VueBell on the mounting bracket (back cover).

④ –Tighten the security screws

⑤ – Just in case you have two old bell buttons on your front door and back door, follow the same procedures and ignore the second bell button. If you have two bells and would like to install your second VueBell, simply repeat step 3 for installation.

## Indoor music chime configuration

Remove the battery cover and insert 2\*1.5V AA batteries; ensure battery polarity match the internal markings. Fix a screw on the wall. Then hand the Indoor Music Chime by the hole at the back of the unit. Avoid position on UPVC frames, about heat source(e.g. Radiator) or damp areas such as kitchen or bathroom.

Important: Test the indoor music chime before drilling any holes to ensure it is within operating range.

Note: As an alternative, the indoor music chime can also be placed on the flat surface, such as table.

## Melody Selection

There is a melody selector located at right side of the Indoor Music Chime. Press the selector to change to a different melody.

## Volume Adjustment

There is a volume button at right side of the Indoor Music Chime. Press it to adjust the sound volume to be high, medium and low.

## User Hints

If the Indoor does not sound, please check the following:

- Flat batteries in Receivers—change the batteries.
- Wrong battery polarity in Receivers—reinsert the batteries.
- Units are out of range—Operate the indoor chime.

## What is Auto-learning Code?

The Outdoor unit sends wireless signal to the Indoor Music Chime. The Indoor Music Chime would automatically register and memorize the signal as an operation code. This how the outdoor unit works with the indoor music chime.

## Auto-learning Code Set Up

The local music chime is equipped with auto-learning operation code ability.

### 1. Operation for 1 outdoor unit and 1 indoor receiver

After power supply on outdoor unit and battery installation on indoor music chime, press the outdoor unit once to generate a new operation code. The indoor music chime will sound, which indicates that a new operation code is registered and memorized.

### 2. Operation for the 2nd / 3rd / 4th / 5th indoor music chime and VueBell Unit:

(a) Power-off the VueBell unit, and the 2nd music chime is ready for the new code registration.

(b) Insert battery to indoor music chime. Connect doorbell to power and press the doorbell touch button, the music chime will sound, indicating that new operation code is registered and memorized. Now the VueBell Unit

works successfully with the 2nd music chime. For the 3rd, 4th, and 5th music chime, please repeat the steps 1 and 2.

3. Interference from another music chime operating nearby (For example, music chime sounds for no reason): Unplug the music chime from the AC power and rest for 30 seconds to erase the memory. Plug the music chime into the AC power again, and then the VueBell unit and the music chime are ready for the new code registration.

### Important

1. Indoor Music Chime is designed for indoor/local use only.

2. Do not mount the VueBell unit close to any metal surface or UPVC door frames; that will reduce the operating range.

3. Do not expose the unit to rain directly, or immerse the unit into water.

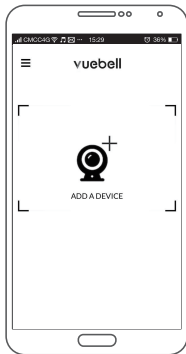
4. Do not mount the unit close to fireplace or expose the unit to extreme temperature.

## Instruction for adding device



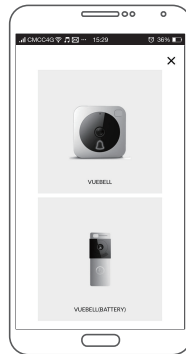
①

1.Registration and log in.



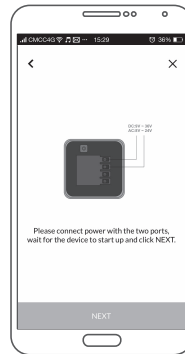
②

2.Press + to add a device.



③

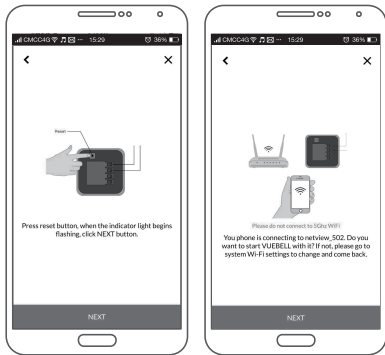
3. Choose VueBell.



④

4. Connect VueBell with AC/DC power supply.

## Instruction for adding device



⑤

⑥

5. Press RESET button on back of the unit to start the VueBell networking connection.

6. Make sure all the devices in the same network.



⑦

⑧

7. Input correct WiFi password.

8. A QR code will be generated on your smart phone immediately. Scan the QR code by using the VueBell's camera.

## Instruction for adding device



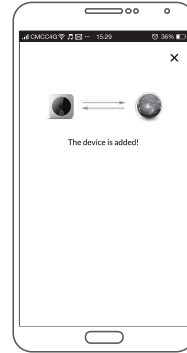
9

9. Wait for the VueBell to connect with router.



10

10. Wait for the VueBell to connect with server.



11

11. The device is added successfully.

## Vuebell LED Indicator Status

Solid blue light: Power is on and the VueBell is starting.

Flashing blue light: After pressing the reset button, WiFi configuration is entered.

Slow flashing blue light: the VueBell is on-line and working normally.

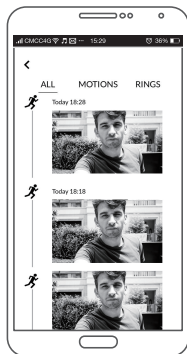
White light: The VueBell is off-line

## VueBell Function Introduction



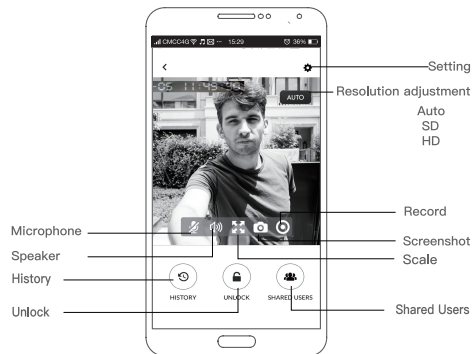
VueBell devices are listed in this page.

## Motion Detection



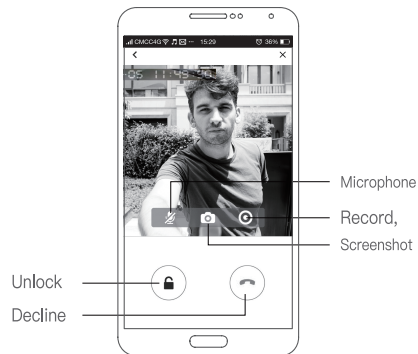
Motion area and sensitive can be set in device settings.

## Live video



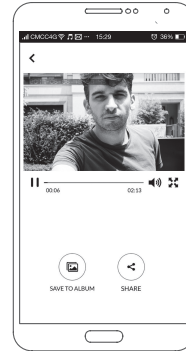
Multiple users feature allows you to share the services with your family members or friends.

## Answering the doorbell ring



When someone is pressing your doorbell, you can answer it by your phone.

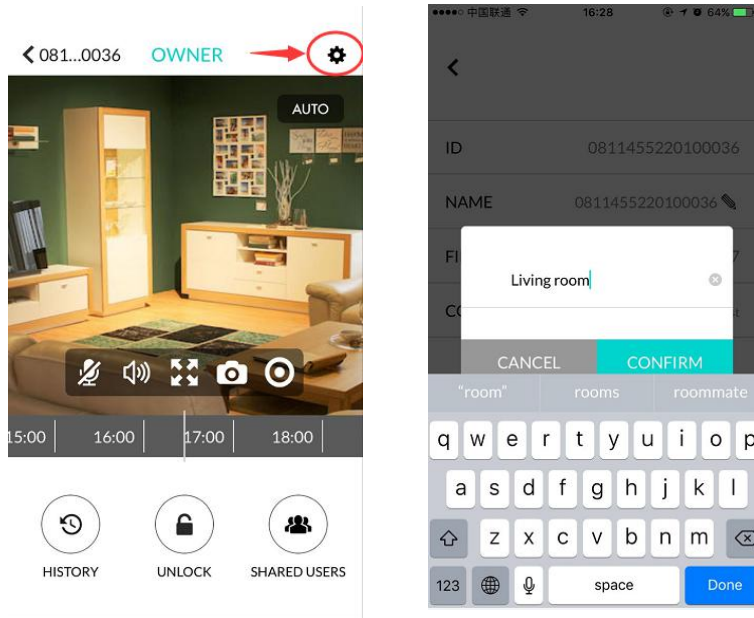
## Cloud video recording



The optional feature saves events after someone press your doorbell.  
Each device provides a 30 days trial cloud service for free.

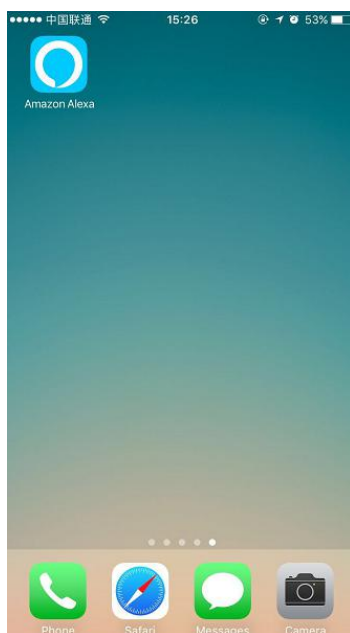
## How to connect to Alexa

Before downloading Amazon Alexa, please change the names of your devices in your Netvue/Vuebell app so that they can be easily recognized by Alexa. For example, you may name your devices front door, back door, living room, office, desk etc.

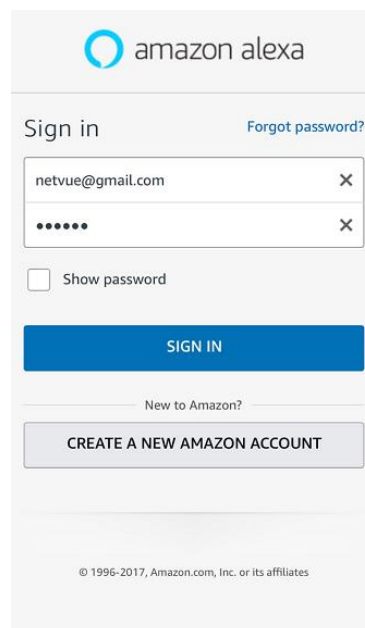


Now we are ready to connect Alexa to your device.

1. Download Amazon Alexa app.



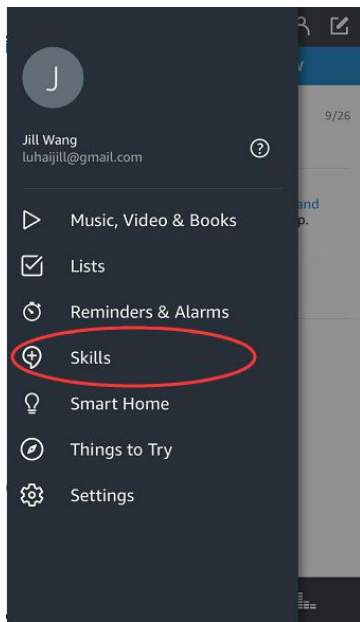
2. Sign in to your Amazon Account.



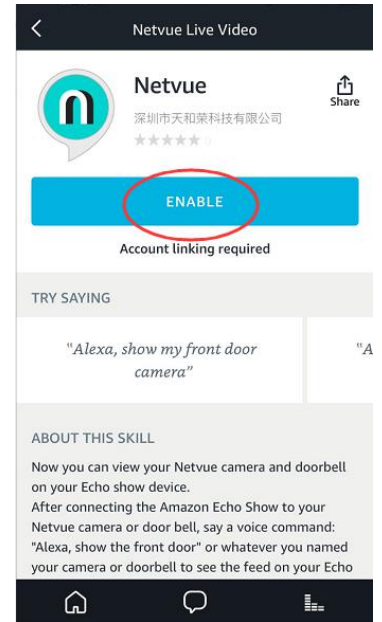
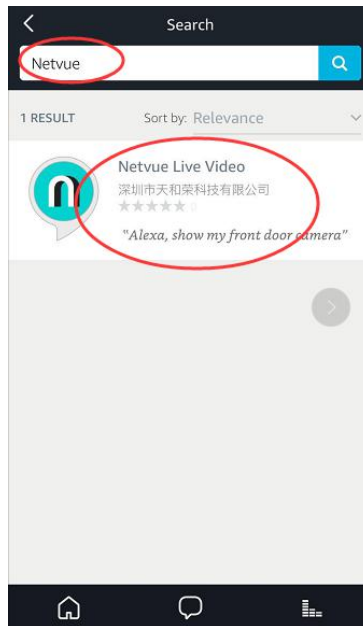
3. To continue with the following steps, please make sure Echo Show or FireTV has been added to your Amazon account and works normally. If there is no Echo Show or FireTV device available under your Amazon account, you will be unable to use this skill to play your Netvue or Vuebell devices.

In regards to how to add Echo Show or FireTV device, please refer to related document or ask the supplier for help.

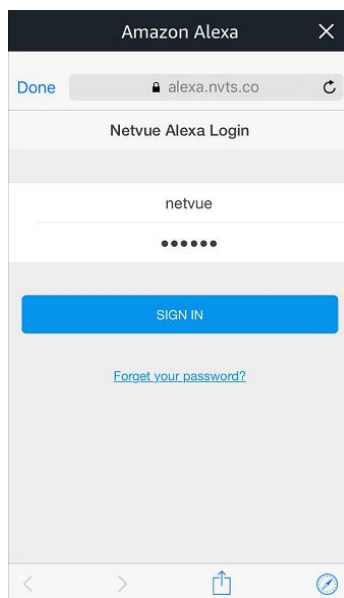
4. Go to menu and choose skills.



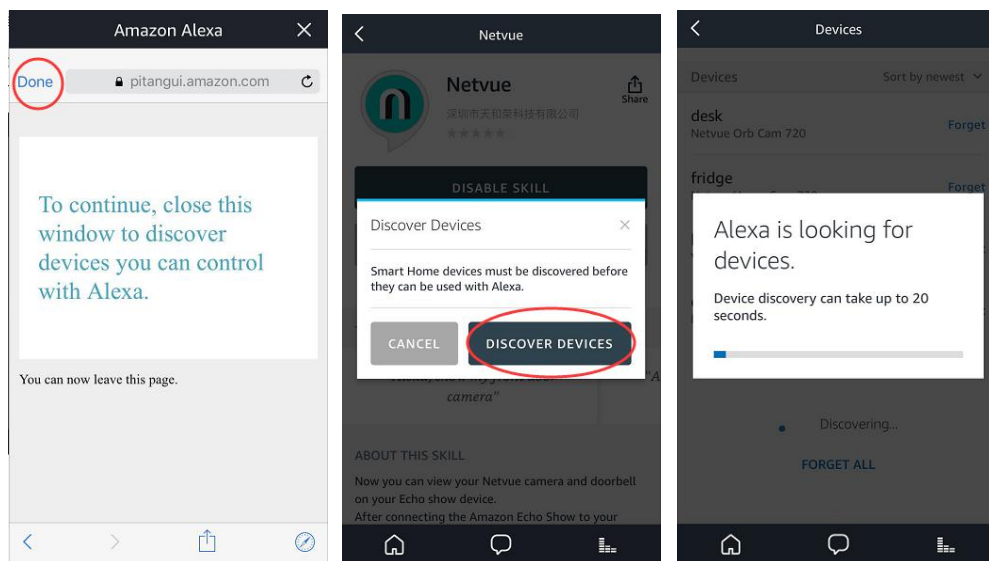
5. Search for "Netvue" or "Vuebell", choose Netvue Live Video, then click enable.



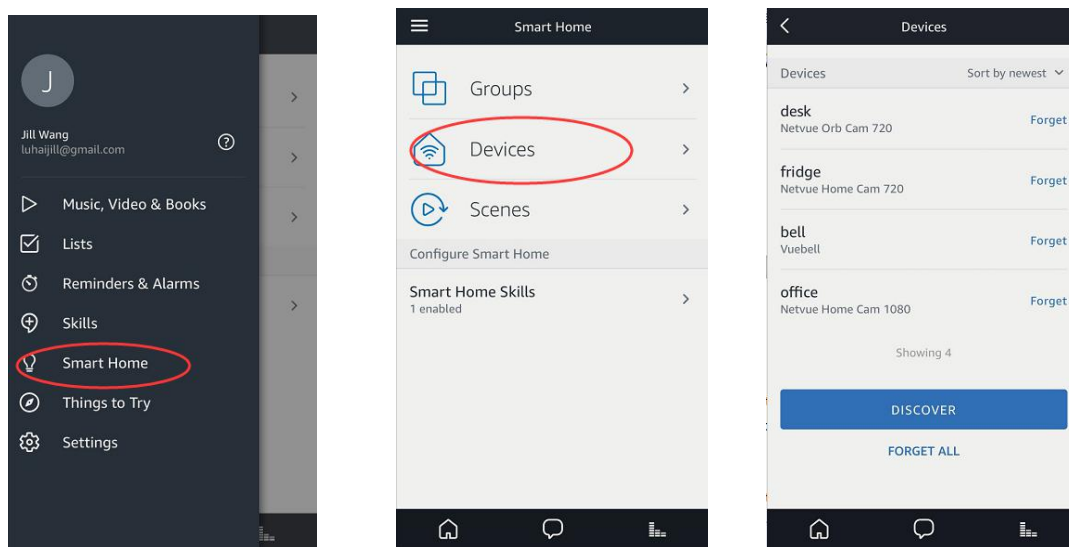
6. Sign in to your Netvue or Vuebell account.



7. Discover devices (please make sure you have already added the devices to your Netvue/Vuebell account). You can discover your devices by clicking "discover devices" or speaking to your Echo Show/FireTV, "Alexa, discover devices".



8. You can find your device list in the Amazon Alexa app under the "Smart Home" tab. If no device is shown, try discovering again.



9. After discovering devices, speak to Echo Show/FireTV to view your cameras. For example, you may say "Alexa, show me living room", "Alexa, I wanna see office camera", "Alexa, show desk" and etc.

10. Enjoy your smart home life!

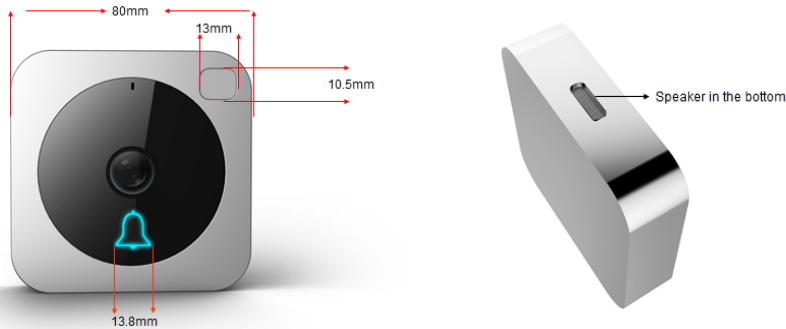
**Note:** In order to switch to another Netvue/Vuebell account, you need to **disable** Netvue skill first and enable it again.

ADD : A501-502, Academy of Aerospace Technology, 10th Kejinan Road, Nanshan District, Shenzhen, China

TEL:+86 755 86227838

FAX:+86 755 86607398

Website: www.netvue.com

**SPECIFICATION**


AGC:	Automatic
White Balance:	Automatic
Resolution:	HD : 1280 * 720;
BALANCED :	640 * 360;
SMOOTH :	320 * 180; AUTO
Focus:	f = 1.3mm F/N = 2.5
Minimum Illumination:	4Lux@F2.5(Color mode), 2Lux@F2.0(Black mode)
PIR Distance:	3 meters
IR LED:	8 IR LEDs; Infrared distance 5 meters
Field of View:	185° horizontal, 120° vertical
Digital zoom:	Max 8x
Audio:	Full duplex audio, build-in loudspeaker and pickup
Video Streaming:	Output up to 30 frames/sec, Max Bit Rate 2Mbps
User Administration:	By password
Network Protocol:	Support TCP/IP, UDP, DNS Client, SNTP, DHCP, SNMP
Power specification:	AC 8-24V, DC 9-36V
WiFi Protocol:	WiFi/802. 11b/g/n
WiFi Distance:	Outdoor<=100m,indoor<=50m(Open-sided place without interference.Dependent on the environment.)
Network Bandwidth:	DHCP on router, Uplink bandwidth≥512K, Downlink bandwidth≥2M, Wireless bandwidth≥54M
Operating System:	Embedded Linux
Mobile phone system requirement:	iOS : 7.0+ android: 4.2+
Waterproof level:	IP53
Working Temperature:	-20°C ~ +50°C
Working Humidity	≤95% non condensing
Other function:	The unlock function is available