

CREATIVE

SoundBLASTER



User's Guide

Model No: SB1610

BC

Introduction

Congratulations on your purchase of Sound Blaster® E3! Featuring SBX® Pro Studio™ technology, this portable USB DAC (Digital-to-Analog Converter) headphone amplifier will give you an immensely powerful audio playback experience when used with your smart devices, PC or Mac. The Sound Blaster E3 provides support for high performance headphones for a studio-grade listening experience and it also comes with dual headphone jacks for easy music sharing. It also boasts NFC for one-touch *Bluetooth*® pairing.

Package Checklist

Your Sound Blaster E3 package comes with the following:

- The Sound Blaster E3
- Micro-USB 2.0 cable
- 4-pole analog cable
- On-The-Go cable
- Quick Start leaflet

Minimum System Requirements

For Windows® OS

- Intel® Core™2 Duo or AMD equivalent processor, 2.8 GHz or faster recommended
- Microsoft® Windows 8.1 32-bit or 64-bit, Windows 8 32-bit or 64-bit, Windows 7 32-bit or 64-bit, Windows Vista® 32-bit or 64-bit
- 1 GB RAM
- 600 MB of free hard disk space
- Powered USB 2.0 / USB 3.0 port

For Mac® OS

- Intel® Core™2 Duo, 2.8 GHz or faster recommended
- Mac OS X® 10.6.8 or higher
- 1 GB RAM
- 600 MB of free hard disk space
- Powered USB 2.0 / USB 3.0 port

For iOS device

- iPhone® / iPad® running iOS 5.0 or higher for *Bluetooth*
- iPhone / iPad running iOS 7.0 or higher for USB Host Audio Streaming via Lightning port

For Android™ device

- Phone / tablet running Android 2.3 or higher for *Bluetooth*

Registering Your Product

Registering your product ensures you receive the most appropriate service and product support available. You can register your product during installation or at www.creative.com/register. Please note that your warranty rights are not dependent on registration.

More Help

For the latest news and products for the Sound Blaster, please visit www.soundblaster.com. The site also includes information on making purchases, technical help and the latest software updates.

Using Creative Software AutoUpdate

Locating, downloading and installing updates for your Creative products is now simpler and faster with the web-based Creative Software AutoUpdate system.

When you connect to Creative Software AutoUpdate via the Internet, the website will analyze your computer system to determine your operating system, language and which Creative products are connected to your system.

When this analysis is completed, you will then be given a list of only the most relevant software updates for your connected products. The files can then be retrieved and installed.

To learn more about the Creative Software AutoUpdate, please visit www.soundblaster.com/support.

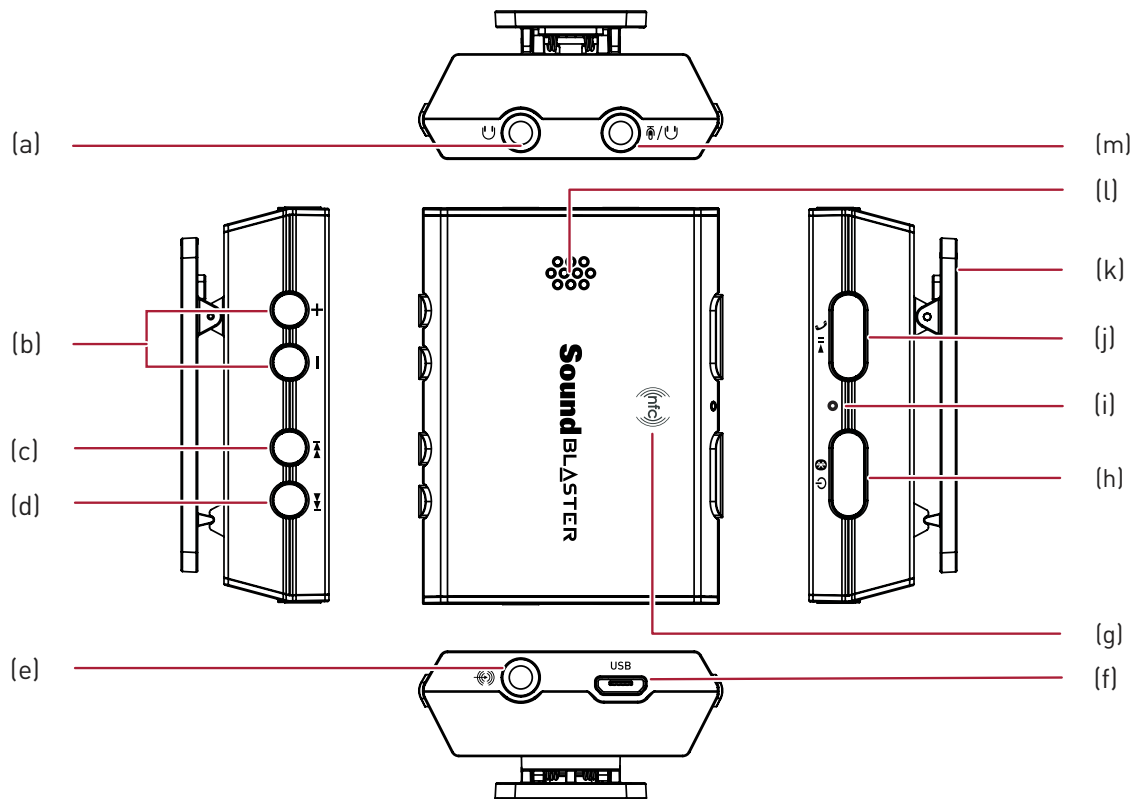
Note:

*First-time users of Creative Software AutoUpdate may be prompted to authorize the download of a browser component required for system analysis. Check to ensure that this content is signed by Creative Labs, Inc., then click the **Yes** button.*

Please ensure that all your Creative products are connected and installed on the same computer running Creative Software AutoUpdate.

About Your Hardware

The Sound Blaster E3 has input and output jacks to enable connection to various devices while controls on the side give you basic control over your audio device.



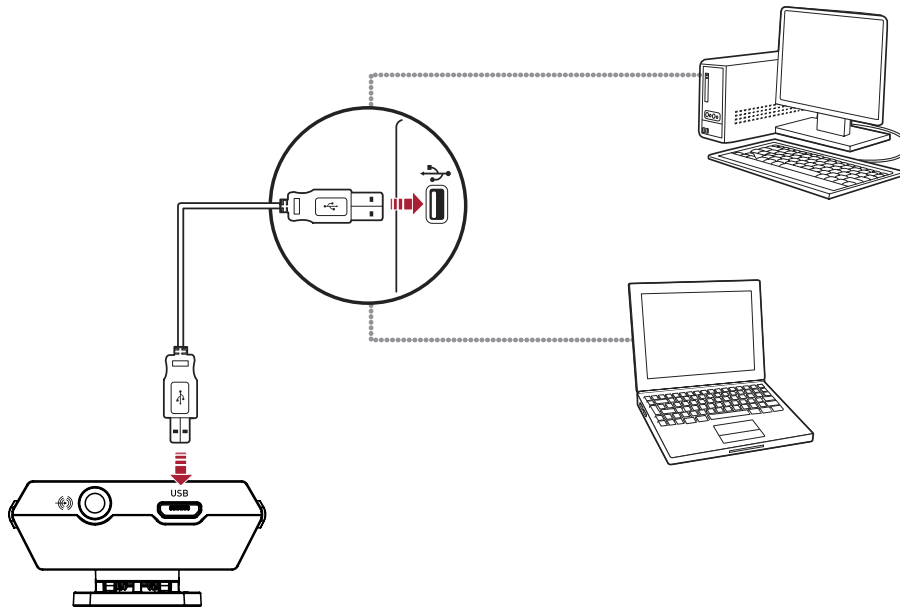
	Jack / Control	Description
(a)	Headphone / Line Out jack	Connects to stereo headphones with a 3.5 mm (1/8-inch) plug. OR Connects to powered analog speakers with a 3.5 mm (1/8-inch) plug.
(b)	Volume control	Adjusts the audio output volume.
(c)	Rewind/Previous Track	Rewind Track Press and hold to rewind. Previous Track Press once to go to the previous track.
(d)	Forward/Next Track	Forward Track Press and hold to forward. Next Track Press once to go to the previous track.
(e)	Line In jack	Connects to line-level sources (smartphones, tablets, MP3 players).

	Jack / Control	Description
(f)	USB port	Connects to USB ports of PC / laptop for audio output and input via a Micro-USB connector.
(g)	NFC	Tap your NFC-enabled device on the Sound Blaster E3 to instantly pair and connect.
(h)	Power / <i>Bluetooth</i> button	<ul style="list-style-type: none"> • Power On – Press and hold 1 sec • <i>Bluetooth</i> pairing – Press and hold 2 sec • Power Off – Press and hold 4 sec
(i)	Status LED indicator	<p>Indicates the battery status and condition of the Sound Blaster E3.</p> <p>White: Power ON / Battery full Red (blinking): Battery low Red: Battery charging Blue (blinking): <i>Bluetooth</i> pairing Blue: <i>Bluetooth</i> connected Off: Power OFF</p>
(j)	Multifunction button	<p>Audio playback on device Press to play/pause a track.</p> <p>Answer/End calls on device Press once to answer an incoming call. Press again to end a call.</p> <p>Note: <i>The use of the Multifunction button to answer/end calls is not supported when connected to a computer.</i></p>
(k)	Clip	Clips on to your clothing or bag for convenient access.
(l)	Microphone	Receives voice input during calls.
(m)	Headphone / Mic In jack	<p>Connects to stereo headphones with a 3.5 mm (1/8-inch) plug.</p> <p style="text-align: center;">OR</p> <p>Connects to the Front Left and Front Right inputs on powered analog speakers with a 3.5 mm (1/8-inch) plug.</p> <p style="text-align: center;">OR</p> <p>Connects to microphones with a 3.5 mm (1/8-inch) plug.</p> <p>Note: <i>An external microphone can only be used when the Sound Blaster E3 is connected to a computer via USB connection. See Setting Up Your Audio Device – Connecting to Headphones / Speakers / Microphone.</i></p>

Setting Up Your Audio Device

Step 1: Charging your Sound Blaster E3

Connect your Sound Blaster E3 directly to a USB port on your computer.



Charge your Sound Blaster E3 for approximately 3 to 4 hours.

It is recommended that you charge it for at least 8 hours before it is used for the first time.

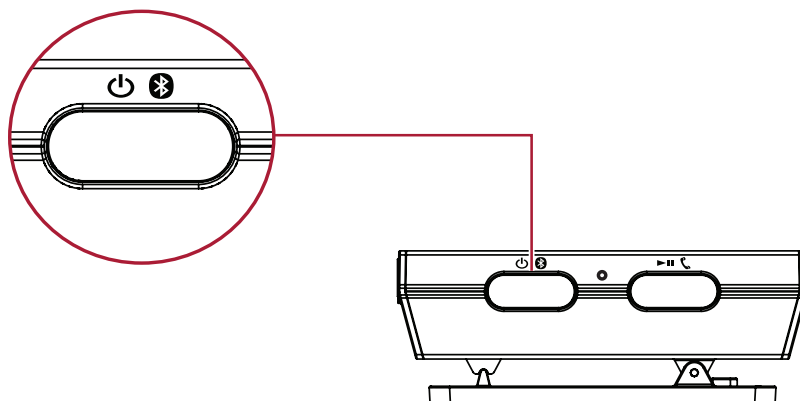
Note:

Lithium polymer battery life may suffer when it is constantly fully depleted or overexerted at low voltage. It is a good practice to keep the battery well charged.

Step 2: Turning On Sound Blaster E3

Press and hold the **Power / Bluetooth** button for 1 second to turn on Sound Blaster E3.

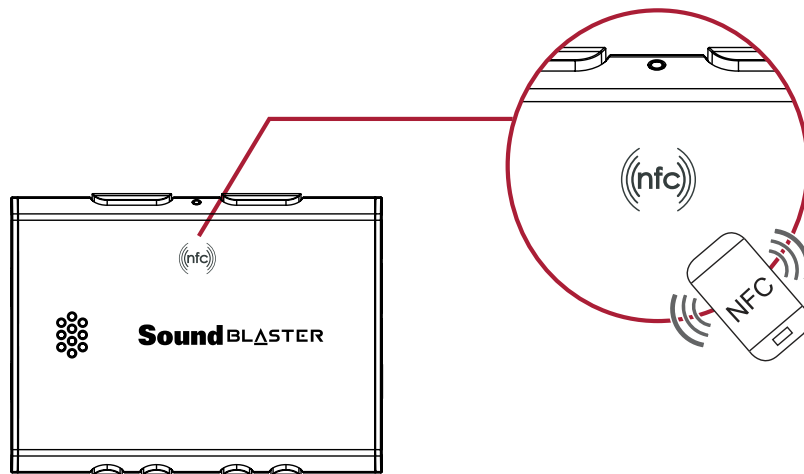
- Power On – Press and hold 1 sec
- *Bluetooth* pairing – Press and hold 2 sec
- Power Off – Press and hold 4 sec



Step 3: Connecting Peripherals

One-touch pairing with NFC

You may pair your NFC-enabled devices with the Sound Blaster E3 with a single tap using NFC technology. Simply follow these steps to connect them.



Action		LED Status	Device Status
1	Turn ON the NFC feature on your device. And touch your device on the NFC logo on Sound Blaster E3. If prompted "Are you sure you want to pair the <i>Bluetooth</i> device?", tap "Yes".	Blue	Device paired automatically. Ready to stream music.

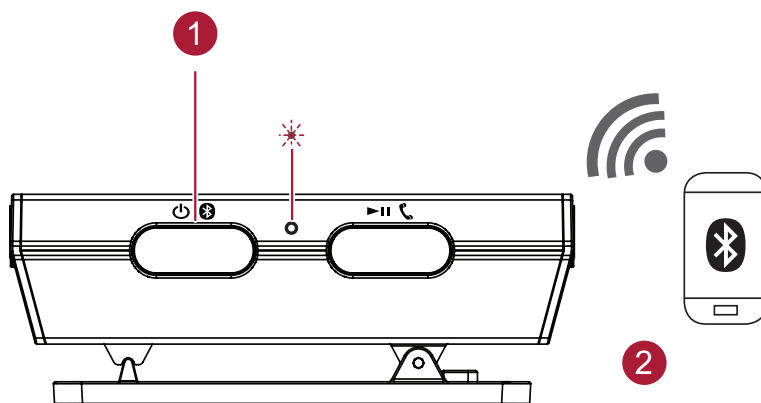
Note:

Be sure that your phone is NFC-enabled and find out where the NFC sensor is located on your phone. For more information, refer to the User Guide of your phone.

To disconnect, tap your device with the Sound Blaster E3 again.

Manual *Bluetooth* pairing

To enjoy your favorite music from your *Bluetooth* devices, simply follow these steps to connect them.



Action		LED Status	Status
1	Press and hold Power / Bluetooth button for 2 seconds.	Blue (blinking)	Pairing mode. Ready to be paired with new device.
2	Turn ON the <i>Bluetooth</i> feature on your device. Search and select " Sound Blaster E3 ". If password is required, enter 0000 and connect to it.	Blue	Ready to stream music.

Note:

If no device is paired within 1 minute, it will exit from pairing mode.

Bluetooth pairing between these devices may vary depending upon the model type. Consult your device's manual on how to pair.

The Sound Blaster E3 supports dual connections, which means you can connect it to two Bluetooth devices at the same time. If you wish to connect it with a third device, you should disconnect the existing two devices first before connecting it to the other device.

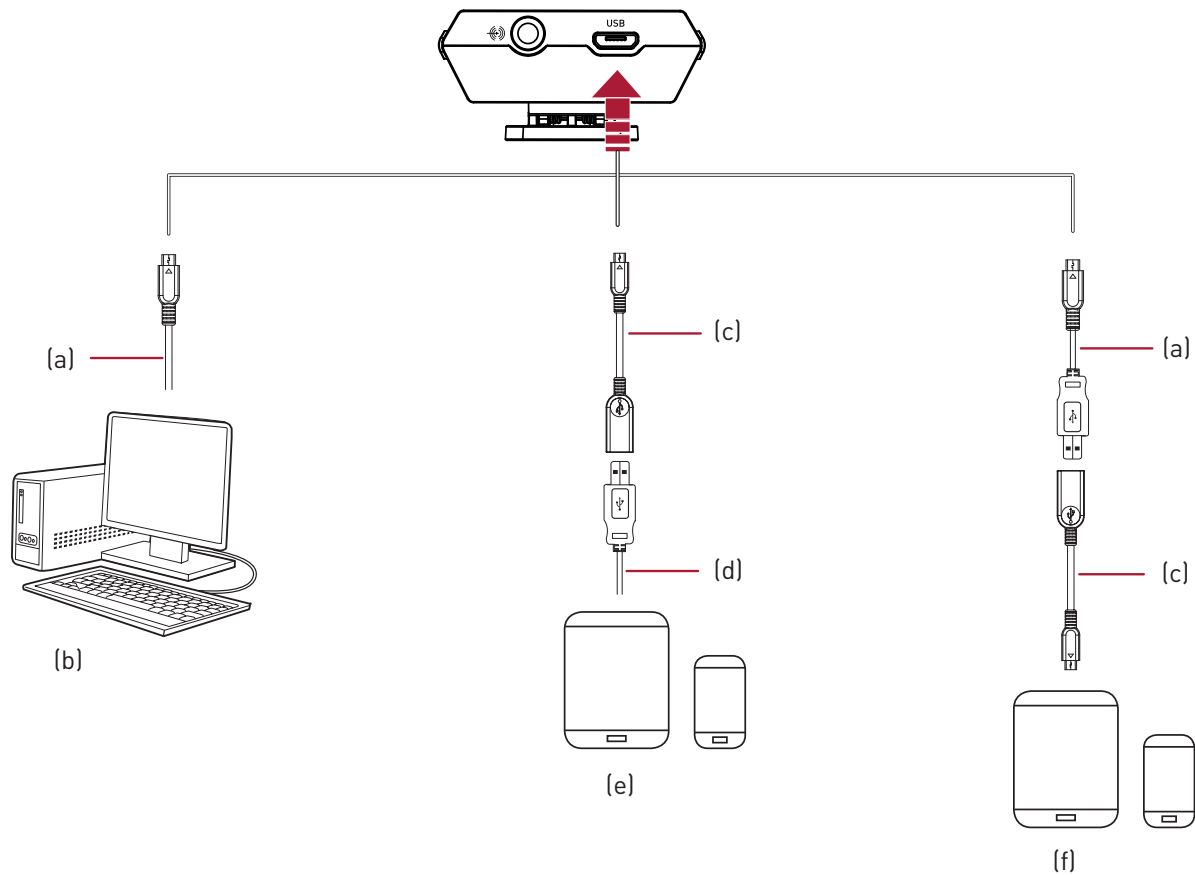
Delete all *Bluetooth* pairing information

To delete all Bluetooth pairing information, see **Restore Factory Default Settings**.

USB Connection

Connect your Sound Blaster E3 to a computer using the Micro-USB to USB cable provided.

To connect a mobile device via USB, use the On-The-Go cable* provided.



- (a) Micro-USB cable
- (b) PC/Mac
- (c) On-The-Go cable*
- (d) USB cable
(not included)
- (e) iPad/iPhone**
- (f) Android Tablet/Smartphone**

Note:

* On-The-Go cable lets you connect your device to the Sound Blaster E3 using the USB cable that came with your device.

** Refer to www.creative.com for the list of compatible models.

Connecting the Sound Blaster E3 to a USB hub is not recommended.

Setting the Sound Blaster E3 as the default audio device

For Windows

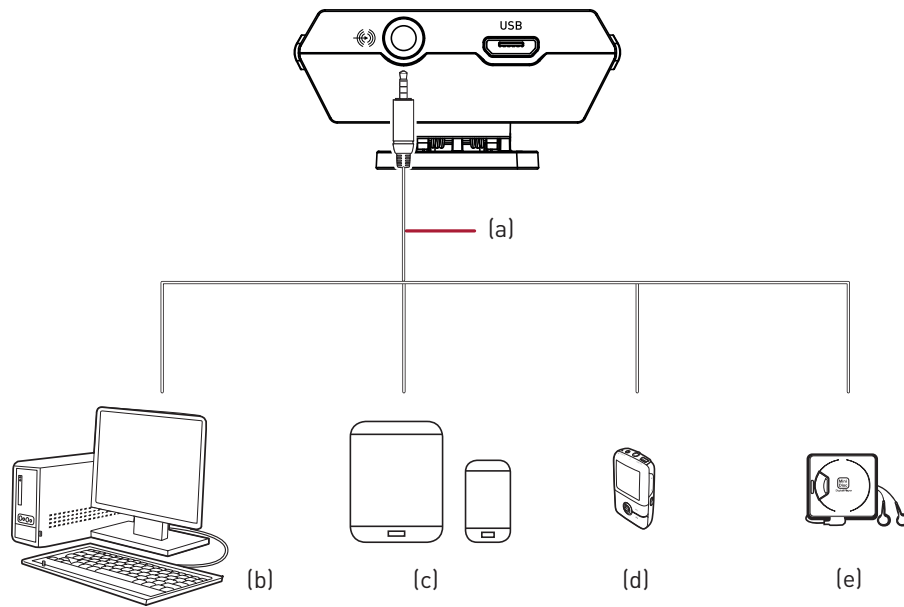
1. Go to **Control Panel** and click **Sound**.
2. Click the **Playback** tab, select the desired **Sound Blaster E3** playback device, then click the **Set Default** button.
3. Click the **Recording** tab, select the desired **Sound Blaster E3** recording device, then click the **Set Default** button.

For Mac

1. Go to **System Preferences** and click **Sound**.
2. Click the **Output** tab, then select **Sound Blaster E3**.
3. Click the **Input** tab, then select **Sound Blaster E3**.

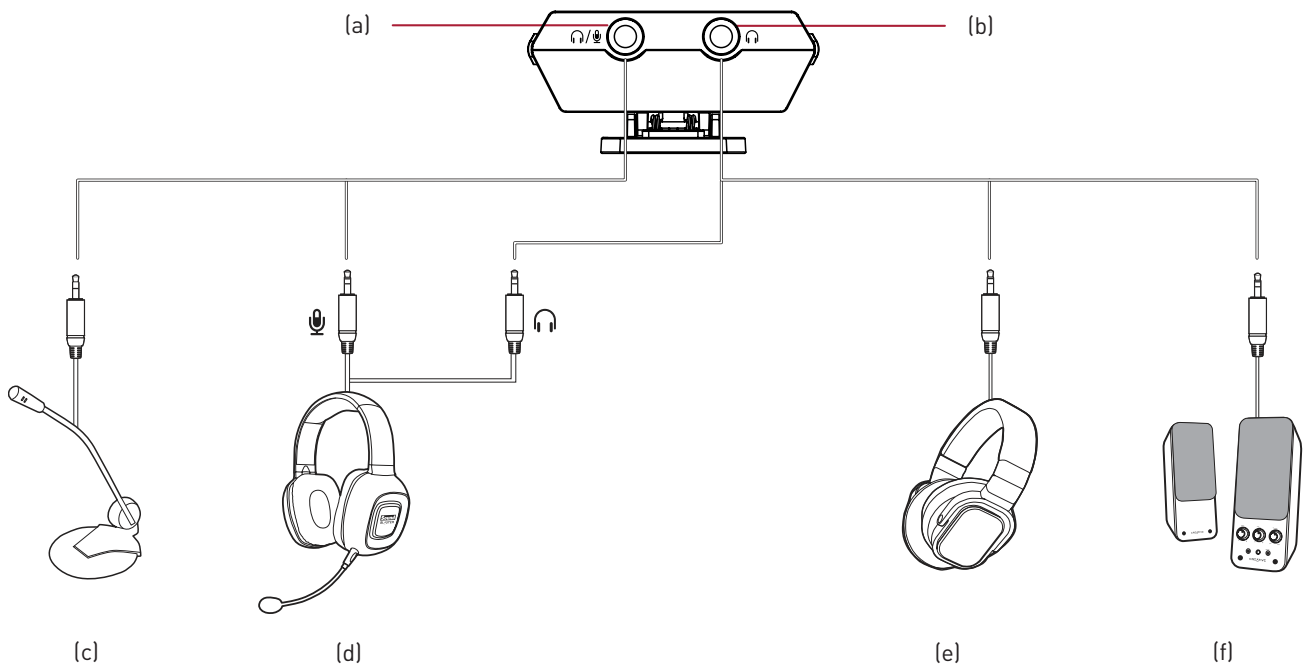
Analog connection

The Sound Blaster E3 also lets you connect devices using the 4-pole analog cable.



- (a) 4-pole analog cable
- (b) PC/Mac
- (c) Tablet/Smartphone
- (d) Portable media player
- (e) DAT/CD players

Connecting to Headphones / Speakers / Microphone



- (a) Headphone / Mic In jack*
- (b) Headphone / Line Out jack
- (c) Microphone
- (d) Headset
- (e) Headphones
- (f) Speakers

Note:

* An external microphone can only be used when the Sound Blaster E3 is connected to a computer via USB connection. By default, the jack functions as a headphone jack. You can launch the Sound Blaster E3 Control Panel to configure the jack to function as an external microphone jack. When Sound Blaster E3 is disconnected from computer, the jack will always function as a headphone jack. See **Using the Creative Software Suite – Advanced Features**.

Hold your audio device firmly when plugging / unplugging peripherals such as speakers or headphones.

The cables shown here are available separately.

For more information, refer to **Using Your Audio Device**.

Installing and Uninstalling Software

To take full advantage of your Sound Blaster E3 audio device, you need to install device drivers and applications. At times, you may also need to uninstall some or all of the device drivers and applications to correct problems, change configurations, or upgrade outdated drivers or applications. To learn how to do so in all supported Windows and Mac operating systems, consult the following sections:

- Installing Drivers and Applications
- Uninstalling Drivers and Applications

Installing Drivers and Applications

Ensure that your audio device is connected before proceeding. For instructions on connecting your audio device, consult your Quick Start leaflet.

After you have connected your audio device, turn on your computer. Windows automatically detects your audio device and searches for device drivers.

For Windows OS

1. Using a standard web browser, visit www.creative.com/support.
2. Locate **Sound Blaster E3** and the software package for your Windows operating system.
3. Download this package into your local hard disk.
4. Locate and launch the software package.
5. Follow the on-screen instructions to complete the installation.
6. When prompted, restart your computer.
7. Launch the application by locating and clicking **Sound Blaster E-Series Control Panel**.

For Mac OS

1. Using a standard web browser, visit www.creative.com/support.
2. Locate **Sound Blaster E3** and the software package for your Mac OS.
3. Download this package into your local hard disk.
4. Double-click the downloaded file to uncompress it.
5. Double-click the uncompressed DMG file.
6. Double-click the **Install** icon and follow the subsequent on-screen instructions to complete the installation.
7. Launch the **Sound Blaster E-Series Control Panel** from the **Applications > Creative** folder.

Note:

Depending on your operating system, model and software version, the user interface or color theme may differ.

Uninstalling Drivers and Applications

In the event that an uninstallation is required (such as for upgrades), please follow the following procedure.

Before you begin, close all running audio applications. Applications that are still running during uninstallation will not be removed.

For Windows OS

1. From the **Control Panel**, click **Uninstall a program**.
2. Select your audio device's entry.
3. Click the **Uninstall** button or option.
If the **User Account Control** dialog box appears, click the **Continue** button.
4. Click the **Yes** button.
5. When prompted, restart your computer.

For Mac OS

1. Click **Applications > Creative > Creative Uninstaller**.
2. Select the Creative product to be uninstalled.
3. Click the **Uninstall** button.
4. Follow the on-screen instructions.

Using Your Audio Device

Step 1: Adjusting the volume

WARNING:

- Set the volume control at minimum level before connecting headphones or speakers.
- Do not listen to audio at high volumes for prolonged periods of time to avoid impairing your hearing.

Adjust the volume to a comfortable level using the volume control.

You can also adjust or mute the volume using:

- Your connected device
- Sound Blaster E-Series Control Panel

Note:

If you mute the volume on your connected device or in the software applications, you will not hear any sound output even if the volume control is set to the maximum.

Step 2: Using your Sound Blaster E3

Your Sound Blaster E3 works seamlessly with many external devices to perform different tasks:

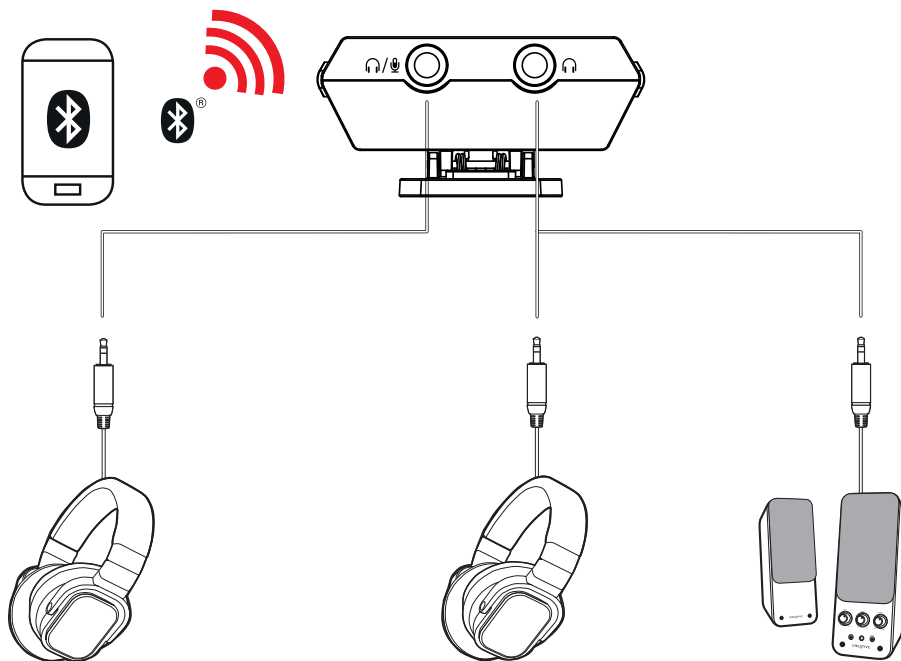
- Playing music
- Answering and ending calls
- Recording audio

Note:

Once connected, the microphone functions of your device are transferred to the Sound Blaster E3.

The microphone function of headsets is not supported when the Sound Blaster E3 is connected to a mobile device.

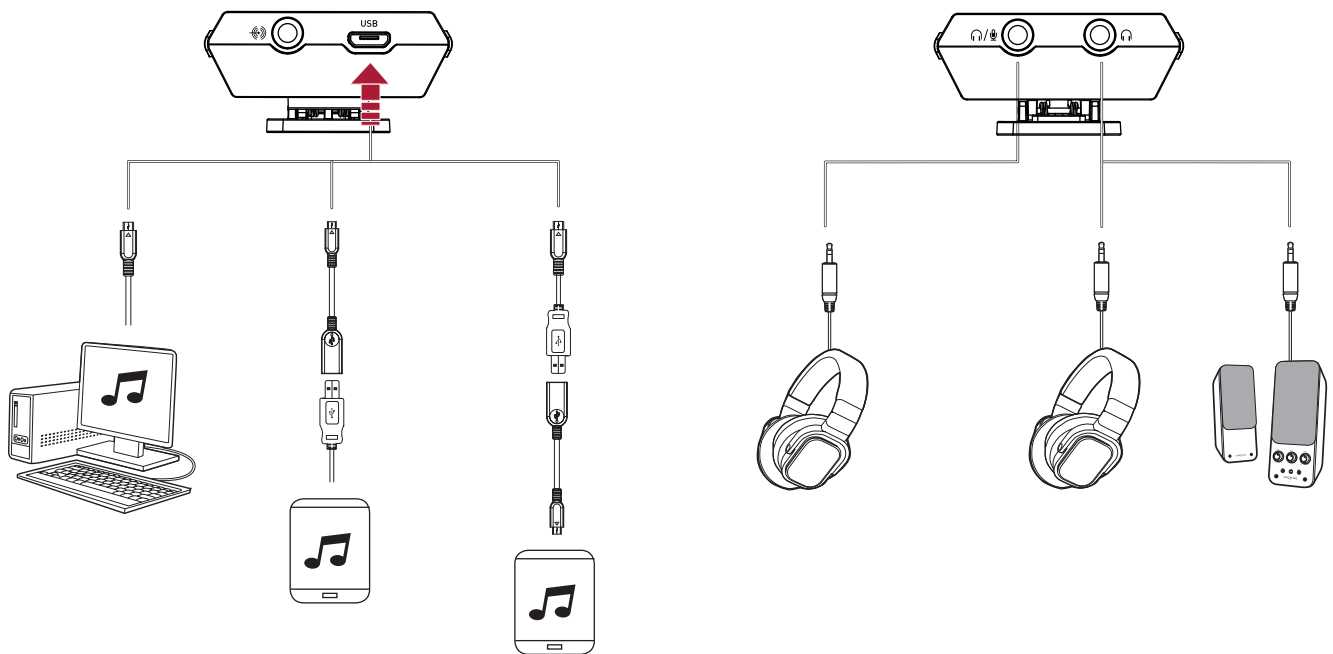
Playing music from a *Bluetooth* device



Note:

Bluetooth audio is muted if an audio cable is connected to the Line In jack.

Playing music from a computer/mobile device via USB

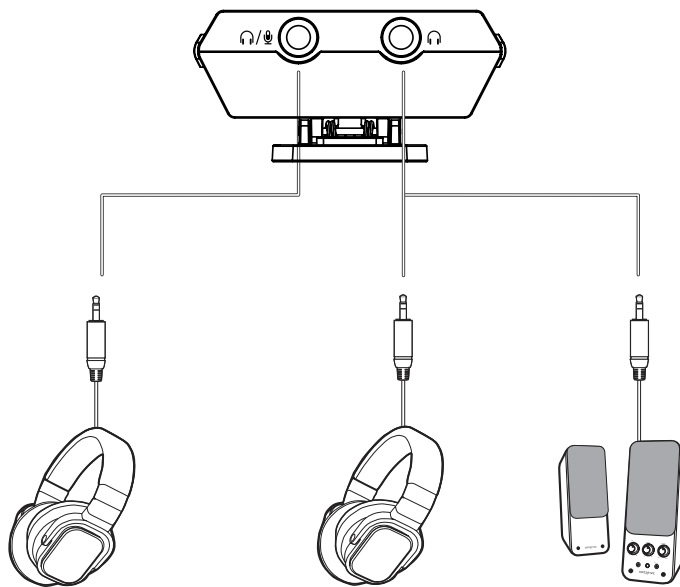
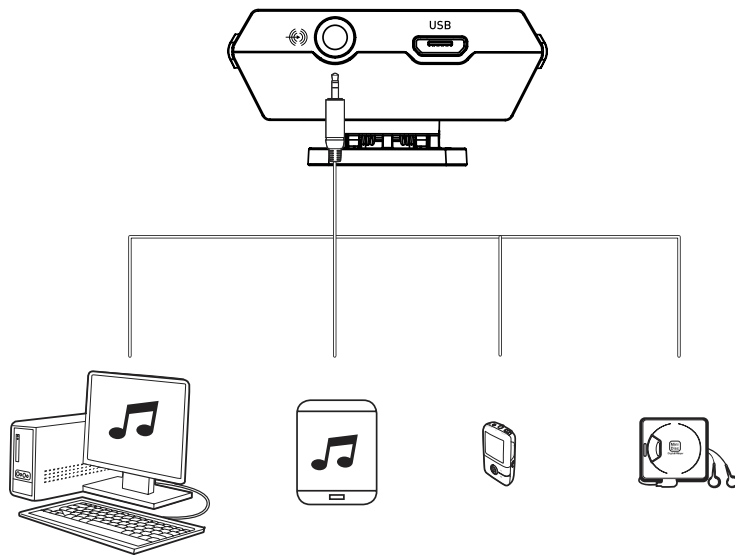


Note:

USB audio from your computer/mobile device is muted if an audio cable is connected to the Line In jack.

*Enhance audio playback with SBX Pro Studio enhancements such as immersion control, dynamic range restoration, low-frequency boost, dialog boost, and automatic volume levelling. See **Using the Creative Software Suite – SBX Pro Studio Settings**.*

Playing music from a line-in device



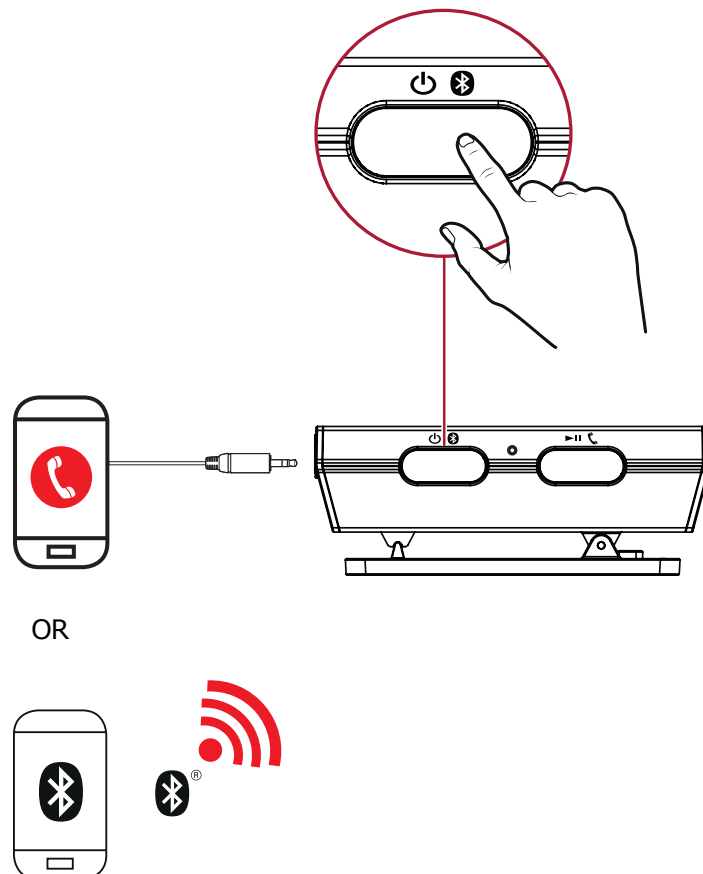
Answering and ending calls

Mobile communication

When there's an incoming call, the call takes precedence over audio playback – playback stops and the ringtone will be heard.

Press the **Multifunction** button once to answer the call. Press again to end a call.

The music will resume after the call has ended.

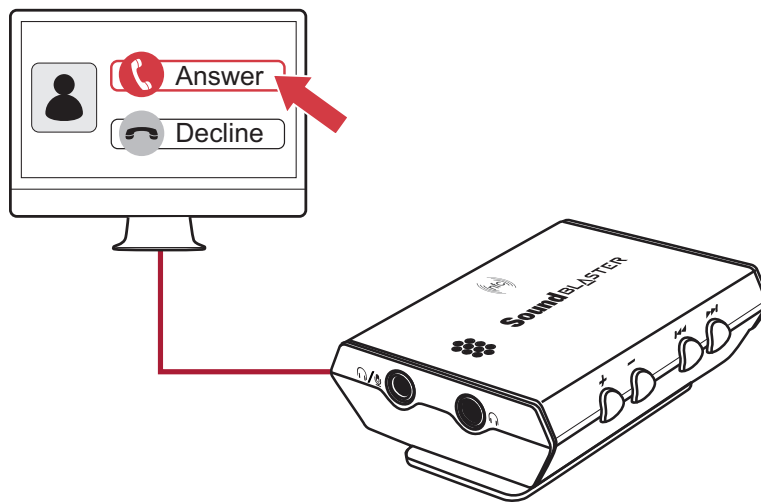


Desktop communication

Use the Sound Blaster E3 to enjoy outstanding acoustic performance in popular VoIP applications like Ventrilo® and TeamSpeak®. Hear and be heard clearly by teammates during multiplayer games to get the tactical edge.

You may choose to morph your voice with special effects with the VoiceFX too! See **Having Fun with CrystalVoice**.

When there's an incoming call, click on the answer call button prompted on the computer screen to enter voice communication.



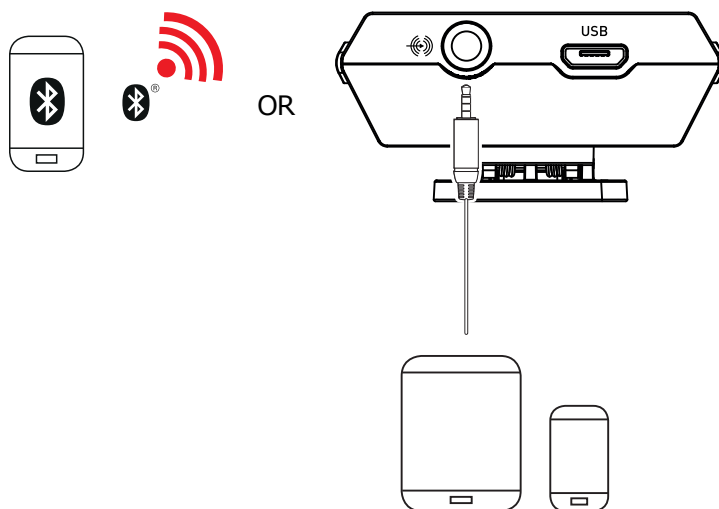
Note:

If two headphones are connected, you will be able to listen to the call on both headphones.

*CrystalVoice enhancements help to further this experience by enhancing the clarity of communications. See **Using the Creative Software Suite – CrystalVoice Settings**.*

Recording audio with a mobile device

You can record audio onto your mobile device with the built-in microphone of the Sound Blaster E3. Use a voice recording application on your mobile device to record audio.



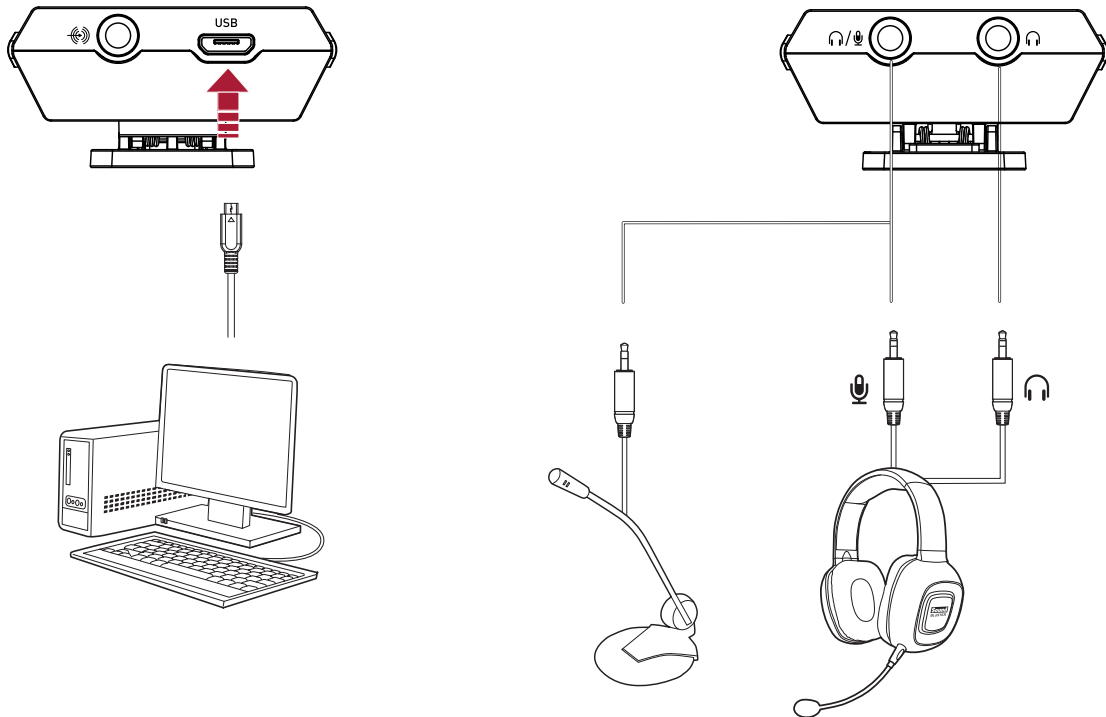
Note:

Once connected, the microphone functions of your device are transferred to the Sound Blaster E3.

Recording audio with a computer

Easily record audio on your computer with the built-in microphone of the Sound Blaster E3.

Use a voice recording application on your computer to record audio.



To use an external microphone

1. Connect a microphone to the Mic In jack.
2. Configure the Headphone/Mic In jack.
See **Using the Creative Software Suite – Advanced Features**.

Note:

If you connect a headset to the Mic In jack using 4-pole analog cable, the microphone function of the headset will not be supported.

The Headphone/Mic In jack configuration automatically switches to "Headphones" when your device is disconnected from the computer.

Sound Blaster E-Series Control Panel will remember your settings and automatically switch the configuration the next time you connect your device.

Recording "What U Hear"

(For Windows OS)

The Sound Blaster E3 is equipped with **What U Hear** feature that allows you to record what is being played as it is.

You can also record voice conversations held over instant messaging tools such as Google Talk, Skype etc.

1. Go to **Control Panel** and click **Sound**.
2. Click the **Recording** tab, select **Sound Blaster E3 (What U Hear)**, then click the **Set Default** button.
3. Play music on your connected device or activate your voice conversation.
4. Launch a third-party sound recording tool of your choice and start recording.

Using the Creative Software Suite

The following software is designed for you to access the basic as well as the advanced features of your audio device. We recommended that you familiarize yourself with their functions in order to make full use of the rich features of your audio device.

Software Applications

For Windows

- Sound Blaster E-Series Control Panel
- Creative System Information
- Creative ALchemy

For Mac

- Sound Blaster E-Series Control Panel

Bonus Pack (for Windows only)

Various other bonus Creative applications are also compatible for your audio device.

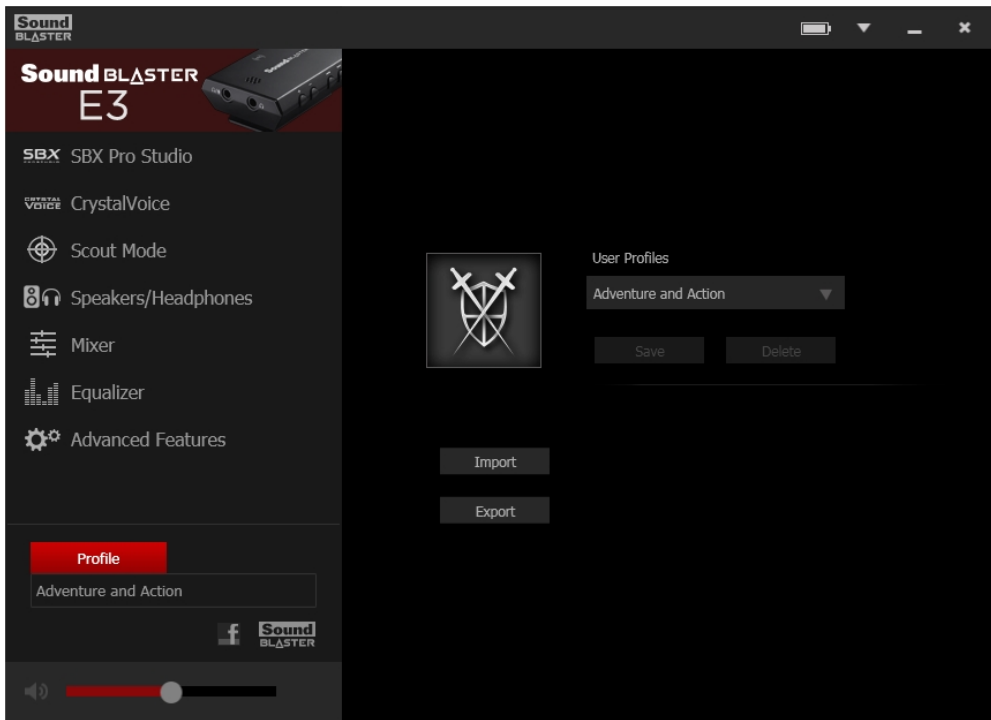
Visit www.creative.com/support and navigate to the relevant product page to view and download these applications:

- Creative WaveStudio
- Creative Media ToolBox Trial

Sound Blaster E-Series Control Panel

The rest of this chapter explains how to use the Sound Blaster E-Series Control Panel to view and adjust the various features of your Sound Blaster E3. The examples and screenshots below uses Windows as an example. The UI for other operating systems may differ slightly.

Managing Your Profiles

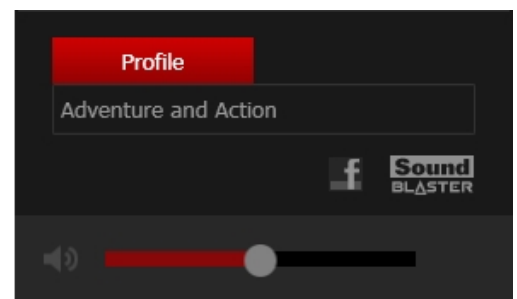


Click the **Profile** button to display the Profiles pane.

Activate a profile by clicking the  and selecting it from the list.

Click **Save** to save all settings to the current profile or create a new profile.

Click **Delete** to delete the active profile.



Sharing Profiles

You can export your custom settings and share them with others, or import other gamers' custom settings.

Customizing Your Avatar


You can customize the avatar for each profile by clicking the portrait and selecting another one from the list.

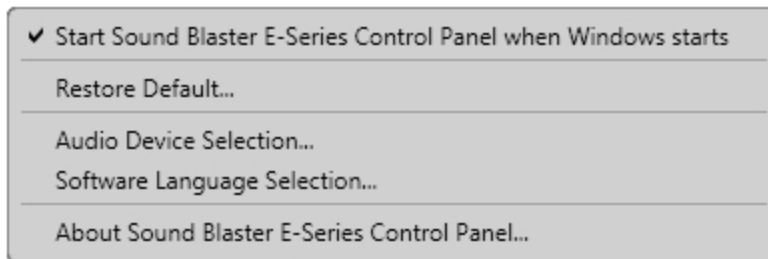
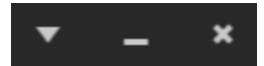
Adjusting Your Master Volume Settings

Drag the master volume slider to adjust the volume level. You can mute / unmute the volume by clicking the speaker icon.




Configuring Your General Settings

Click  from the top right corner of the interface and select the option from the list:

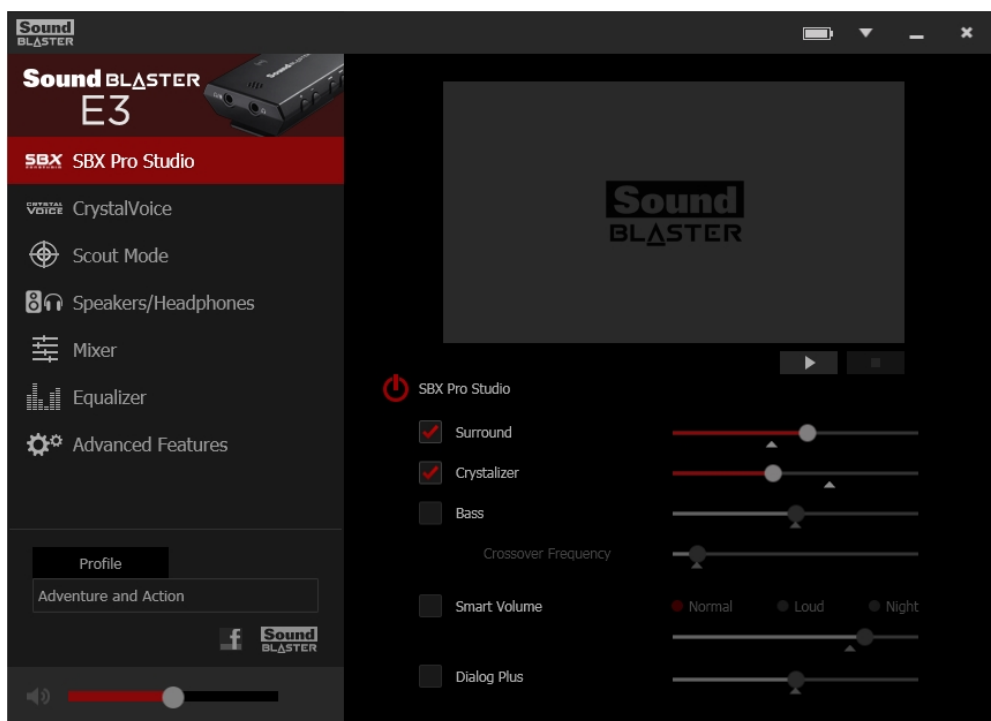


- Select whether the Sound Blaster E-Series Control Panel is activated when Windows starts.
- Restore default settings.
- Select the audio playback device.
- Select the supported software languages available for your system.
- General information regarding your Sound Blaster E-Series Control Panel software.

Battery


The battery icon  indicates the battery status of the Sound Blaster E3.

SBX Pro Studio Settings



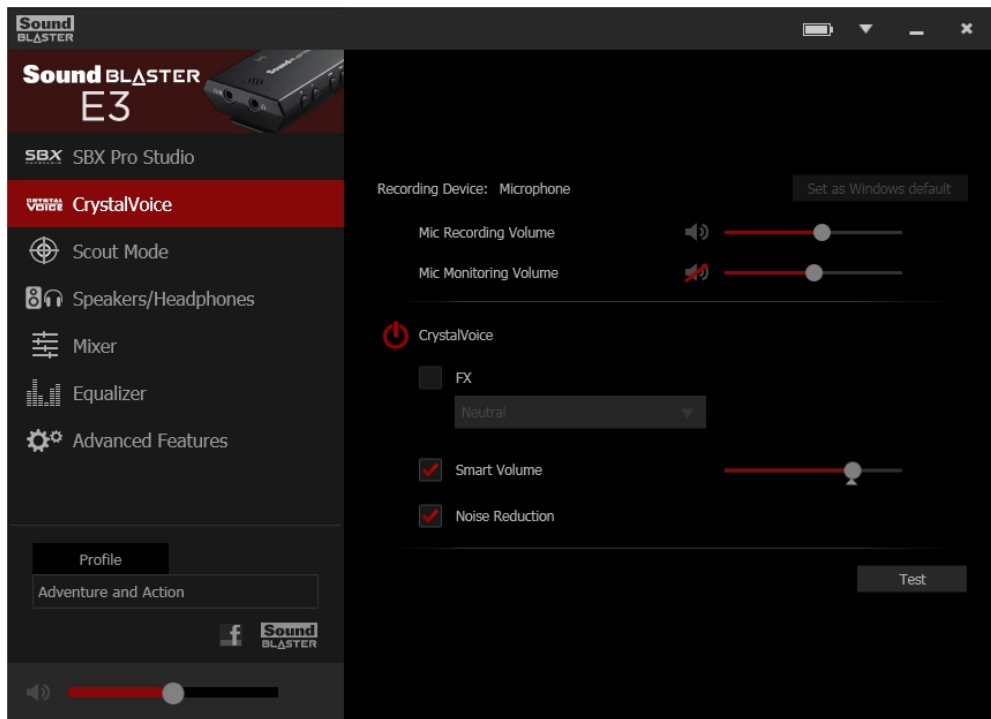
1. SBX Pro Studio enhancements
Select to turn on or turn off each enhancement.
You can hover your mouse cursor over each enhancement to display a brief explanation.
2. Enhancement Level sliders
Adjust the amount of enhancement to apply.
3. Audio test controls
Play or Stop the demo video.

Enhancing Your Listening Experience

You can adjust the amount to apply for each enhancement by dragging its slider left to decrease or right to increase. To test the effects of the audio enhancements, click  and listen to the demo video.

- **SBX Pro Studio Surround** provides immersion control of sounds not just around you, but also above and below for a full 3D audio experience. Hear the natural sense of audio depth, spaciousness and stunning 3D surround effects from your audio content. Enjoy an unbelievably true-to-life audio experience, whether it's over stereo speakers or headphones.
- **SBX Pro Studio Crystalizer** restores the dynamic range that is lost when iTunes and MP3 music gets compressed. This makes the music sound as good as the artist originally intended, and adds an enhanced level of realism for movies and games.
- **SBX Pro Studio Bass** fills in the low frequency tones and gives the extra impact for a better entertainment experience. It dramatically improves the sound experience without a subwoofer.
- **SBX Pro Studio Smart Volume** addresses the problem of abrupt volume level changes during playback and between songs by automatically and continuously measuring volume, and intelligently applying gain and attenuation to compensate for those changes.
- **SBX Pro Studio Dialog Plus** enhances the voices in movies for clearer dialog, allowing the listener to hear the dialog over the rest of the soundtrack and over ambient noise in the listening environment.

CrystalVoice Settings



1. CrystalVoice enhancements
Select to turn on or off each of the available enhancements.
2. Enhancement Level sliders
Adjust the amount of enhancement to apply.
3. Audio test button
Click **Test** and speak into your microphone to hear how your voice sounds with CrystalVoice applied.

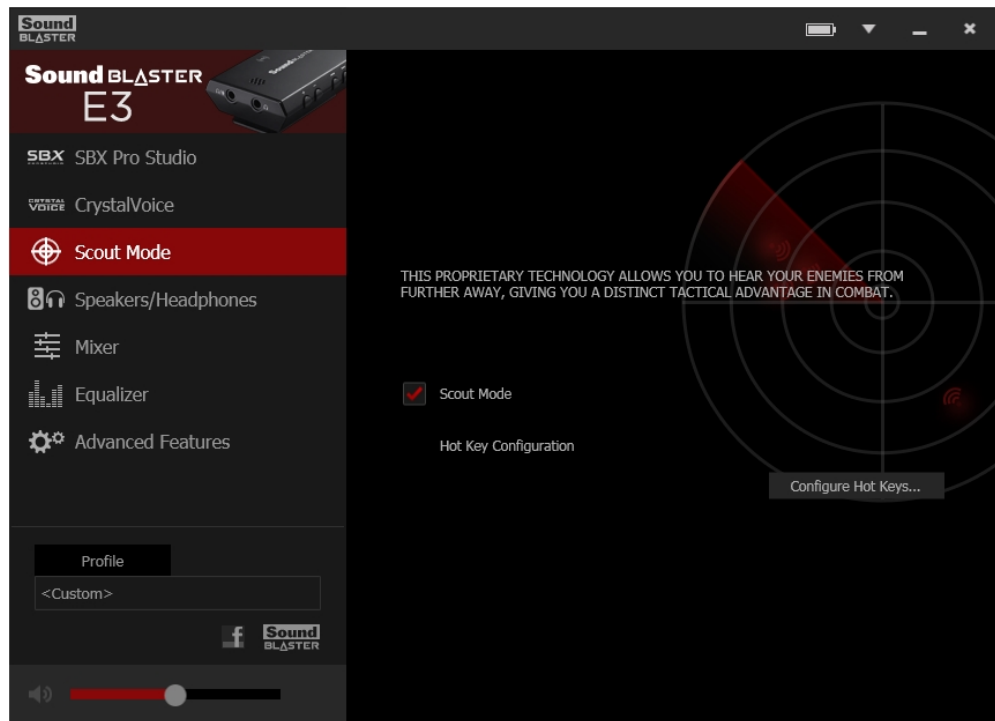
Having Fun with CrystalVoice

You can adjust the amount to apply for each enhancement by dragging its slider left to decrease or right to increase. To test the effects of the audio enhancements, click **Test** and speak into your microphone.

- **CrystalVoice FX** enables the speaker's voice to be altered with a variety of effects, which can be used to enhance the tone of the speaker's voice, create interesting accents or to sound like a completely different person.
- **CrystalVoice Smart Volume** automatically adjusts the loudness of the speaker's voice to maintain a consistent volume level. This makes it convenient for the speaker to converse normally, regardless of whether the speaker is close to or far away from the microphone.
- **CrystalVoice Noise Reduction** enables the speaker to be heard clearly over background noise by constantly monitoring the environment and eliminate the unwanted noise that interferes with the conversation.

Scout Mode

Scout Mode delivers audio realism that enables you to hear your opponents from further away, giving you a distinct tactical advantage in combat.



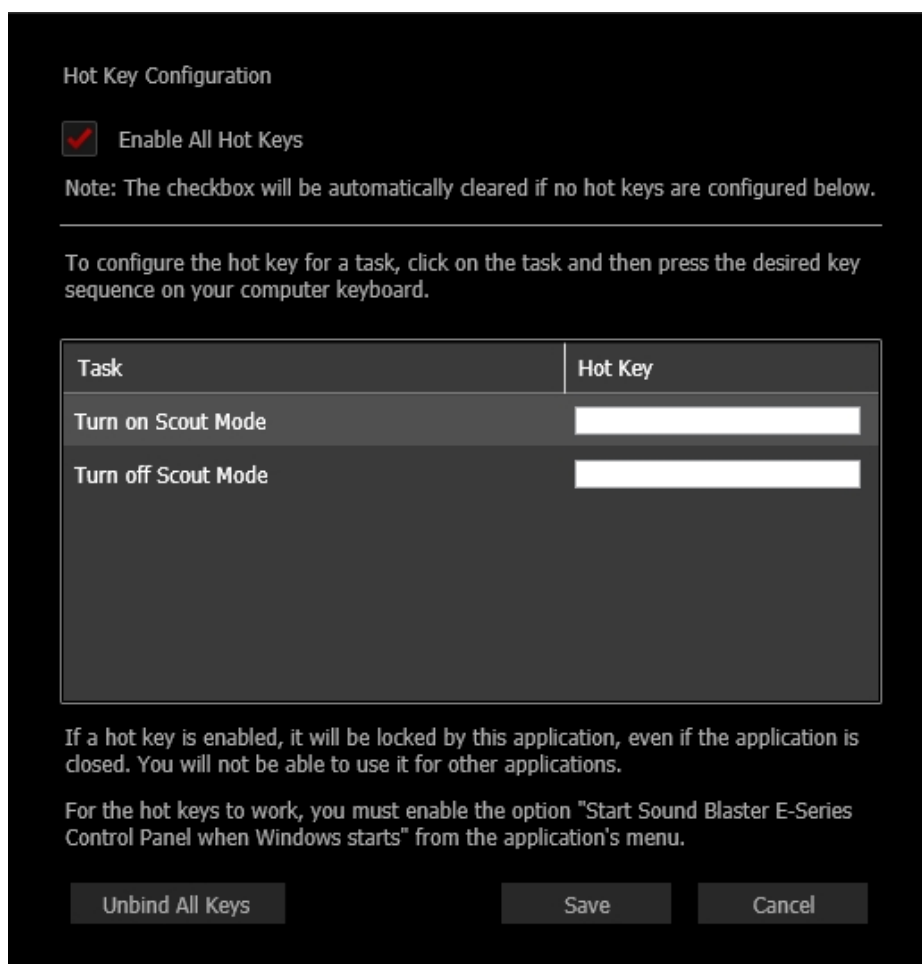
1. Scout Mode
Select to turn on or off Scout Mode.
2. Click **Configure Hot Keys...** to configure hotkeys for turning on and turning off Scout Mode.

Note:

When Scout Mode is activated, other audio settings may be disabled.

Configuring Hot Keys

You can assign short-cut keys to activate Scout Mode easily during a game.



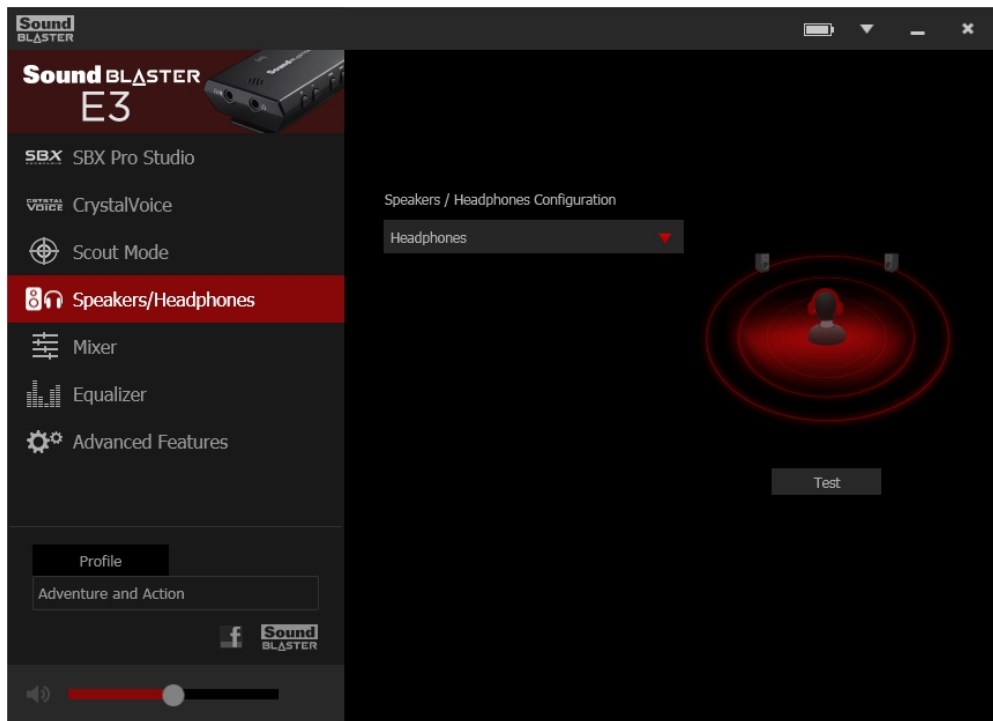
1. Select the checkbox to **Enable All Hot Keys**.
2. Click on the field box and then press the desired key sequence on your computer keyboard. You may use the Ctrl, Alt and Shift keys followed by another key (alphanumeric keys only).
E.g.:
To set **Ctrl + Shift + A** as your desired hot keys, **press and hold Ctrl, then press Shift and A together**.
3. Once the Hot Key has been registered, click **Save** to accept the setting.
4. To unbind all registered keys and start over again, click **Unbind All Keys**.

Note:

The Hot Key cannot function with just a key input without the use of the Alt, Ctrl and Shift keys.

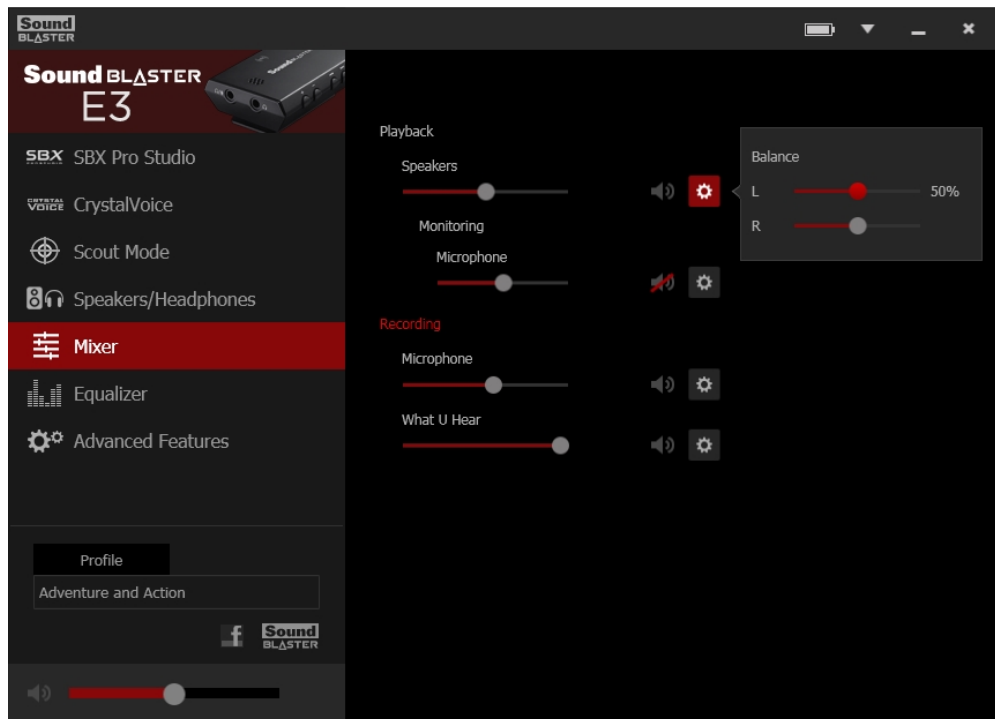
If a hot key is enabled, you will not be able to use it for other applications.



Speakers/Headphones Settings



1. Speakers / Headphones Configuration
Select your current physical speakers or headphones configuration.
2. Testing your audio playback
Click **Test** to hear a sample audio clip being played back through your setup.

Mixer Settings



1. Volume sliders
Adjust the playback and recording volume for your various inputs and outputs.
2. Mixer Settings
Click the  icon to mute/unmute the input/output.
You can click the  icon to adjust the settings for your input/output.

Equalizer Settings



1. EQ presets
Select an equalizer preset to apply to your audio.
2. EQ sliders
Adjust the equalizer settings.

Customizing Your EQ Settings

Select the EQ checkbox to enable this feature, then click the EQ drop-down arrow and select a preset from the list.

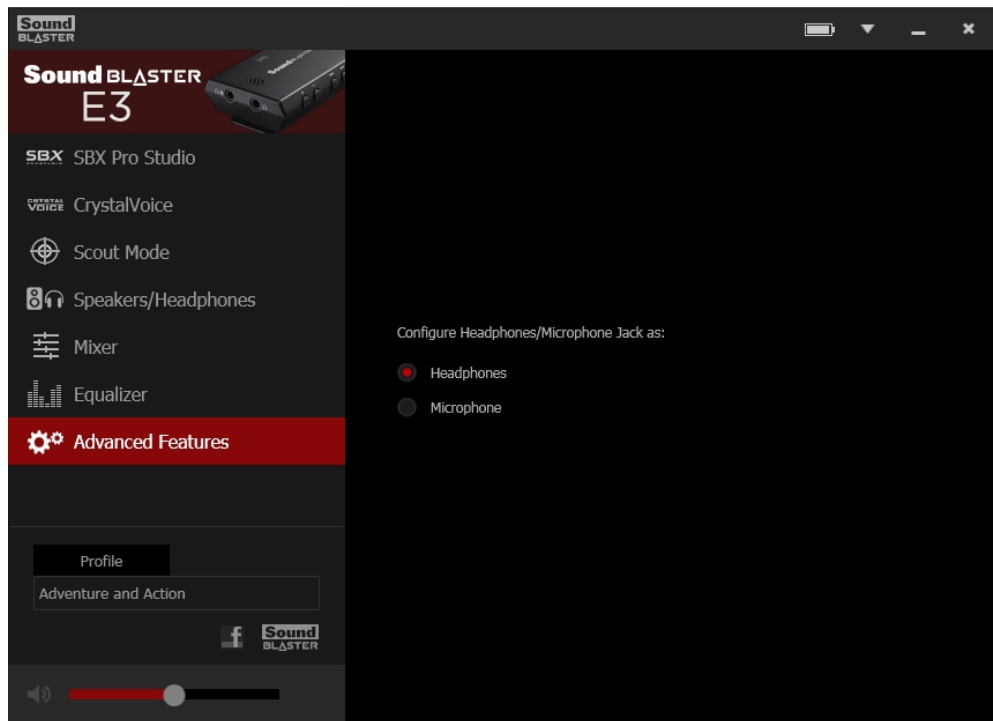
Selecting a preset will move the EQ sliders to the appropriate values. You can then adjust the equalizer setting by dragging the sliders up or down to the desired level. Click **Save** to save the new configuration as a new preset.

Note:

The list of default EQ presets cannot be deleted or overwritten.

Advanced Features

This software also provides advanced features to configure the Headphone/Mic In jack.



1. Connect your Sound Blaster E3 to your computer installed with the Sound Blaster E-Series Control Panel.
2. Select the desired configuration to enable it.

Note:

The Headphone/Mic In jack configuration automatically switches to "Headphones" when your device is disconnected from the computer.

Sound Blaster E-Series Control Panel will remember your settings and automatically switch the configuration the next time you connect your device.

General Specifications

High Definition Audio Quality (for Windows)

- 24-bit Digital-to-Analog conversion of digital sources during playback in 24-bit with sampling rate of up to 96 kHz.
- 24-bit Analog-to-Digital conversion of analog sources during recording in 24-bit with sampling rates up to 48 kHz.

Inputs

- One 3.5 mm (1/8") jack for mono analog microphone input
- One 3.5 mm (1/8") jack for stereo line-level analog input
- One Micro-USB port
- Built-in mono microphone

Outputs

- Two 3.5 mm (1/8") jack for stereo analog headphones
- Up to 600 ohm headphone amplifier


Controls and Indicators

- Multifunction button
- Volume control
- Rewind/Previous Track button
- Forward/Next Track button
- Power / *Bluetooth* button
- White/Red LED for power/battery indication

Physical Specifications

- Dimensions (L x W x H) : 60.5 X 45 X 23 mm
- Weight: Approx. 0.044 kg

Technical Specifications

- Operating Temperature range: 0°C to 40°C (32°F to 104°F)
- Lithium Polymer Battery: 3.7 V 850 mAh (3.15 Wh)
- USB Input: 5V  500mA
- *Bluetooth* Version: *Bluetooth* 2.1 + EDR (Enhanced Data Rate)
- Supported *Bluetooth* Profiles:
 - A2DP (Wireless Stereo *Bluetooth*)
 - AVRCP (*Bluetooth* Remote Control)
 - HFP (Hands-Free Profile)
- *Bluetooth* Operating Frequency: 2402 - 2480 MHz
- *Bluetooth* Operating Range: Up to 10 meters / 33 feet (Measured in open space. Walls and structures may affect range of device.)
- Supported Audio Codec: AAC, SBC, aptX®

Troubleshooting and Support

This section provides solutions to problems you may encounter during installation or normal use.

No sound from the headphones.

Check the following:

- The headphones are connected to the Headphone jack.
- Ensure the Sound Blaster E3 is turned on.
- Ensure the volume control of the Sound Blaster E3 is not at minimum level.
- Ensure the volume on your connected device or the media player is not muted.
- Ensure no audio cable is connected to the Line In jack when listening to *Bluetooth* or USB audio.
- In the Speakers/Headphones selection of Sound Blaster E-Series Control Panel, the **Headphones** option is selected.

No audio output when playing digital files such as WAV, MIDI files or AVI clips.

Check the following:

- The volume control is set at mid-range. Adjust the volume mixer settings in Sound Blaster E-Series Control Panel, if necessary.
- The powered speakers or external amplifier are connected to the Line Out jack.

No audio can be recorded from the built-in microphone.

Do the following:

- i. Navigate to Windows **Control Panel** > **Sound** > **Recording** tab.
- ii. Select **Sound Blaster E3 (Microphone)** as the default recording device.
- iii. In the **Mixer** selection of Sound Blaster E-Series Control Panel, unmute the **Microphone** from **Recording** option.

No audio can be recorded from the source connected to Line In/Mic In jack.

Do the following:

- i. Navigate to Windows **Control Panel** > **Sound** > **Recording** tab.
- ii. Select **Sound Blaster E3 (Microphone)** as the default recording device.
- iii. In the **Advanced Features** selection of Sound Blaster E-Series Control Panel, select **Microphone**.
- iv. In the **Mixer** selection of Sound Blaster E-Series Control Panel, unmute the **Microphone** from **Recording** option.

The device cannot be turned on after it is turned off.

There is no audio during playback after you turn off and turn on the device.

After you turn off the device, wait for at least 4 seconds before turning on the device again.

Problems with simultaneous playback/recording

To prevent audio distortion during simultaneous playback and recording, the playback and recording audio formats must be the same. For example, set both the playback and recording formats to either **24-bit/48kHz** or **16-bit/48kHz**.

Restore Factory Default Settings

To reset your device to the factory default settings, press and hold the **Power / Bluetooth button** for 8 seconds while in power OFF mode. Release the button when the LED indicator blinks white. All *Bluetooth* pairing information on your device will be erased.

Additional Support

If you encounter any other issues or have any other enquiries about your Sound Blaster E3 or any other Creative products, please visit our comprehensive knowledge base at support.creative.com or www.soundblaster.com for additional information.

Safety Information

Refer to the following information to use your product safely, and to reduce the chance of electric shock, short-circuiting, damage, fire, hearing impairment or other hazards. Improper handling may void the warranty for your product. For more information, read the warranty available with your product.

- Do not dismantle or attempt to repair your product.
Refer all servicing to authorized repair agents.
- Do not expose your product to temperatures outside the range of 0°C to 40°C (32°F to 104°F).
- Do not pierce, crush or set fire to your product.
- Keep your product away from strong magnetic objects.
- Do not subject your product to excessive force or impact.
- Do not expose your product to water or moisture.
If your product is moisture-resistant, take care not to immerse your product in water or expose it to rain.

Earphones

- Do not listen to audio on your earbuds or headphones at high volume for prolonged periods of time as hearing loss may result. For users in the United States, go to www.hei.org for more information.
- Do not listen to your audio device at high volume when driving, cycling or crossing the road, especially in heavy traffic or any other traffic condition where such use will hinder safe travel on the roads. We recommend that consumers be extremely cautious when using this device on the road.



Avoid Hearing Damage

Permanent hearing loss may occur if the headphone is used at high volume. Set the volume to a safe level. You can adapt over time to a higher volume of sound that may sound normal but can be damaging to your hearing. If you experience ringing in your ears or muffled speech, stop listening and have your hearing checked. The louder the volume, the less time is required before your hearing could be affected. Hearing experts suggest that to protect your hearing:

- Limit the amount of time you use the headphone at high volume.
- Avoid turning up the volume to block out noisy surroundings.
- Turn the volume down if you can't hear people speaking near you.

Embedded Battery

- Do not attempt to remove the embedded battery.
The product must be disposed of according to the local environmental regulations. To replace the battery, return your product to your regional support office. For product service information, go to www.creative.com.
- Do not expose to excessive heat such as sunlight, fire or the like.
- **CAUTION:** Risk of explosion if battery is replaced by incorrect types.

Wireless Product

- The short wave radio frequency signals of a wireless device may impair the operation of other electronic and medical devices.
- Switch off the device where it is prohibited. Do not use the device in medical facilities, aircraft, refueling points, close to automatic doors, automatic fire alarms or other automatically controlled devices.
- Keep this device at least 20 cm from pacemakers and other medical devices. Radio waves may impair the operation of pacemakers and other medical devices.

IMPORTANT — A LIRE AVEC ATTENTION

Ecouter de manière prolongée, à un très haut volume sonore de la musique (au dessus de 80 decibels), aumoyen d'un casque ou d'écouteurs, peut entraîner une détérioration irréversible et définitive de vos facultés auditives. L'usage répété et habituel d'un casque ou d'écouteurs à un niveau de volume sonore trop élevé peut donner l'impression à l'utilisateur que le volume sonore émis par l'appareil n'est pas suffisant. L'utilisateur sera tenté d'augmenter, petit à petit, son réglage habituel, risquant ainsi d'atteindre un niveau dangereux pour ses oreilles. Afin de protéger votre santé, et vos oreilles, veillez à maintenir le volume de la sortie casque de votre appareil à un niveau adapté et à interrompre son utilisation régulièrement et particulièrement si des symptômes, comme des troubles de l'ouïe, se manifestent.

N'utilisez pas le casque ou les écouteurs pendant la conduite d'une voiture, d'une bicyclette ou de tout autre véhicule motorisé, afin d'éviter tout accident de la circulation. En outre, il est interdit dans certains pays d'utiliser un casque ou des écouteurs en conduisant. Il peut être également dangereux d'écouter à volume élevé tout en marchant, spécialement aux passages piétons. Soyez toujours extrêmement prudent et cessez d'utiliser cet appareil dans les situations présentant des risques d'accident.

Evitez d'utiliser le casque ou les écouteurs à volume élevé. Les médecins spécialistes de l'audition déconseillent une écoute continue à volume trop élevé. Si vous percevez un sifflement dans les oreilles, réduisez le volume ou cessez l'écoute.

Maintenez un volume d'écoute modéré. Vous pourrez ainsi entendre les sons extérieurs et être attentif aux gens qui vous entourent.

Votre produit Creative accompagné des écouteurs fournis, est conforme à la réglementation française concernant les baladeurs musicaux (Arrêté du 24 Juillet 1998). Les caractéristiques techniques de ces écouteurs se trouvent dans le manuel en ligne et/ou sur le site internet de Creative. Si vous choisissez d'utiliser un autre casque ou d'autres écouteurs, veuillez vous assurer au préalable que leurs caractéristiques techniques soient les mêmes.

срок эксплуатационной долговечности

В соответствии с законодательством Российской Федерации компания Creative устанавливает для данного товара срок службы 2 года. Указанный срок – это период времени, в течение которого компания Creative гарантирует возможность использования продукции в соответствии с ее назначением. Кроме того, во время этого срока компания Creative гарантирует:

(i) безопасность товара, (ii) возможность выполнения его ремонта и получения технической поддержки, (iii) поставку запасных частей. Однако установление срока службы не означает автоматического бесплатного предоставления технической поддержки и обслуживания. Эти виды услуг предоставляются бесплатно только в течение гарантийного периода в соответствии с гарантийными обязательствами.

Regulatory Information

Notice for the USA

Federal Communication Commission (FCC) Interference Statement

FCC Part 15: This equipment has been tested and found to comply with the limits for a Class B digital device, pursuant to Part 15 of the FCC Rules. These limits are designed to provide reasonable protection against harmful interference in a residential installation. This equipment generates, uses and can radiate radio frequency energy and, if no installed and used in accordance with instructions, may cause harmful interference to radio communications. However, there is no guarantee that interference will not occur in a particular installation. If this equipment does cause harmful interference to radio or television reception, which can be determined by turning the equipment off and on, the user is encouraged to try to correct the interference by one or more of the following measures:

- Reorient or relocate the receiving antenna.
- Increase the separation between the equipment and receiver.
- Connect the equipment to an outlet on a circuit different from that to which the receiver is connected.
- Consult the dealer or an experienced radio/TV technician for help.

This device complies with part 15 of the FCC Rules. Operation is subjected to the following two conditions:

1. This device may not cause harmful interference, and
2. This device must accept any interference received, including interference that may cause undesired operation.

CAUTION: To comply with the limits of the Class B digital device, pursuant to Part 15 of the FCC Rules, this device must be installed with computer equipment certified to comply with Class B limits.

All cables used to connect to the computer and peripherals must be shielded and grounded. Operation with non-certified computers or non-shielded cables may result in interference to radio or television reception.

MODIFICATION: Any changes or modifications not expressly approved by the grantee of this device could void the user's authority to operate the device.

Federal Communication Commission (FCC) Radiation Exposure Statement

Power is so low that no RF exposure calculation is needed.

Notice for Canada

This Class B digital apparatus complies with Canadian ICES-003 and RSS-210.

Cet appareil numérique de classe B est conforme aux normes canadiennes NMB-003 et CNR-210.

This device complies with Industry Canada licence-exempt RSS standard.

Operation is subject to the following two conditions:

1. This device may not cause harmful interference, and
2. this device must accept any interference received, including interference that may cause undesirable operation.

Cet appareil est conforme avec Industrie Canada RSS standard exempts de licence.

Son fonctionnement est soumis aux deux conditions suivantes :

1. Le matériel ne peut être source D'interférences et
2. Doit accepter toutes les interférences reçues, Y compris celles pouvant provoquer un fonctionnement indésirable.

CANADIAN CLASS B STATEMENT: This digital device does not exceed the Class B limits for radio noise emissions from digital apparatus as set out in the interference-causing equipment statement entitled "Digital Apparatus", ICES-003 of the Department of Communications.

Cet appareil numérique respecte les limites de bruits radioélectriques applicables aux appareils numériques de Class B prescrites dans la norme sur le matériel brouilleur: "Appareils Numériques," NMB-003 édictée par le ministre des Communications.

MODIFICATION: Any changes or modifications not expressly approved by the grantee of this device could void the user's authority to operate the device.

Toute modification non approuvée explicitement par le fournisseur de licence de l'appareil peut entraîner l'annulation du droit de l'utilisateur à utiliser l'appareil.

DECLARATION OF CONFORMITY

According to the FCC96 208 and ET95-19

Manufacturer/Importer's Name: **Creative Labs, Inc.**

Manufacturer/Importer's Address: **1901 McCarthy Boulevard
Milpitas, CA. 95035
Tel: (408) 428-6600**

declares under its sole responsibility that the product

Trade Name: **Creative**

Model Numbers: **SB1610**

has been tested according to the FCC / CISPR22 requirement for Class B devices and found compliant with the following standards:

***EMI/EMC: ANSI C63.4, FCC Part 15 Subpart B& C
Complies with Canadian ICES-003 Class B, RSS-GEN & RSS-210***

This device complies with part 15 of the FCC Rules.

Operation is subject to the following two conditions:

- (1) This device may not cause harmful interference, and*
- (2) this device must accept any interference received, including Interference that may cause undesirable operation.*

Ce matériel est conforme à la section 15 des règles FCC.

Son Fonctionnement est soumis aux deux conditions suivantes :

- (1) Le matériel ne peut être source D'interférences et*
- (2) Doit accepter toutes les interférences reçues, Y compris celles pouvant provoquer un fonctionnement indésirable.*

Supplementary Information:

Compliance Manager
Creative Labs, Inc.
June 10, 2014

European Compliance

This product conforms to the following:



EMC Directive 2004/108/EC.

RoHS Directive 2011/65/EU.

Mains operated products for the European market comply with Low Voltage Directive 2006/95/EC and Commission Regulation(s) Implementing Directive 2009/125/EC.

Communication/RF wireless products for the European market comply with R&TTE Directive 1999/5/EC.

CAUTION: To comply with the Europe CE requirement, this device must be installed with CE certified computer equipment which meet with Class B limits.

All cables used to connect this device must be shielded, grounded and no longer than 3m in length. Operation with non-certified computers or incorrect cables may result in interference to other devices or undesired effects to the product.

MODIFICATION: Any changes or modifications not expressly approved by Creative Technology Limited or one of its affiliated companies could void the user's warranty and guarantee rights.

Conformité européenne

Ce produit est conforme aux normes suivantes :

Directive 2004/108/CE sur les émissions électromagnétiques.

Directive RoHS 2011/65/UE.

Les produits secteur pour le marché européen sont conformes à la Directive sur la faible tension 2006/95/CE et à la réglementation de la Commission exécutant la Directive 2009/125/CE.

Les produits de communication/sans fil RF destinés au marché européen sont conformes à la directive R&TTE 1999/5/CE.

ATTENTION : pour respecter les critères CE d'Europe, cet appareil doit être installé avec du matériel informatique certifié CE respectant les limites de la classe B.

Tous les câbles utilisés pour connecter cet appareil doivent être blindés, reliés à la terre et ne pas faire plus de 3 m de long. L'utilisation d'ordinateurs non certifiés ou de câbles inappropriés peut entraîner des interférences avec d'autres appareils ou des effets indésirables sur le produit.

MODIFICATION : toute modification non approuvée explicitement par Creative Technology Limited ou l'une de ses sociétés affiliées peut entraîner l'annulation de la garantie et des droits de garantie de l'utilisateur.

Conformità alle normative europee

Questo prodotto è conforme alla seguente normativa:

Direttiva EMC 2004/108/CE.

Direttiva RoHS 2011/65/UE.

I prodotti che funzionano con corrente di rete per il mercato europeo sono conformi alla direttiva bassa tensione 2006/95/CE e alla direttiva di implementazione nelle normative europee 2009/125/CE.

I prodotti di comunicazione/wireless RF per il mercato europeo sono conformi alla Direttiva R&TTE 1999/5/CE.

ATTENZIONE: ai fini della conformità con i requisiti del marchio CE europeo, il dispositivo deve essere installato in un computer certificato CE conforme ai limiti di Classe B.

Tutti i cavi usati per collegare il dispositivo devono essere schermati, dotati di idonea messa a terra e avere una lunghezza massima di 3 metri. L'uso del dispositivo con computer non certificati o cavi non idonei può provocare interferenze ad altri dispositivi nonché danneggiare il prodotto stesso.

MODIFICHE: eventuali modifiche o alterazioni non espressamente approvate da Creative Technology Limited o dalle sue società controllate possono rendere nulli la garanzia e il diritto dell'utente a utilizzare il prodotto.

Einhaltung der europäischen Bestimmungen

Dieses Produkt erfüllt die folgenden Bestimmungen:

EMC-Richtlinie 2004/108/EG.

RoHS-richtlinie 2011/65/EU.

Netzbetriebene Produkte für den europäischen Markt erfüllen die Niederspannungsverordnung 2006/95/EG und der Commission Regulation(s) Implementing-Verordnung 2009/125/EG.

Drahtlose Kommunikationsgeräte/Funksender und -empfänger für den europäischen Markt erfüllen die R&TTE-Richtlinie 1999/5/EG.

ACHTUNG: Um die Anforderungen der europäischen CE-Norm zu erfüllen, muss dieses Produkt an einem CE-geprüften Computer der Klasse B angeschlossen werden.

Alle Verbindungskabel zu diesem Gerät müssen abgeschirmt und geerdet sein und dürfen nicht länger als 3 m sein. Der Betrieb mit nicht zertifizierten Computern oder nicht ordnungsgemäßen Kabeln kann zu Störungen anderer Geräte oder unerwünschten Auswirkungen auf das Produkt führen.

MODIFIZIERUNG: Jegliche Änderung oder Modifizierung des Produkts, die nicht ausdrücklich von Creative Technology Limited oder einer der zugehörigen Firmen genehmigt worden ist, kann für den Benutzer zum Erlöschen der Garantie und der Gewährleistungsrechte führen.

Homologación para Europa

Este producto cumple:

la Directiva de compatibilidad electromagnética 2004/108/CE.

Directiva RoHS 2011/65/UE.

Los productos funcionando con corriente eléctrica cumplen con la Directiva 2006/95/CE de baja tensión y con la implementación de los requisitos de la Comisión para la directiva 2009/125/CE.

Los productos inalámbricos de comunicación o frecuencias de radio para el mercado europeo cumplen la Directiva 1999/5/CE de equipos de radio y terminales de telecomunicaciones.

ATENCIÓN: para cumplir con los requisitos de Homologación para Europa, este dispositivo debe instalarse con un equipo informático con certificación CE que cumpla los límites de la Clase B. Todos los cables utilizados para conectar este dispositivo deben estar protegidos, conectados a tierra y no tener más de 3 m de longitud. El funcionamiento del dispositivo con equipos no certificados o cables incorrectos podría provocar interferencias a otros dispositivos o efectos no deseados al producto.

MODIFICACIÓN: los cambios o modificaciones no aprobados expresamente por Creative Technology Limited o una de sus empresas afiliadas podrían invalidar la garantía del usuario y los derechos de la garantía.

Europese naleving

Dit product voldoet aan de volgende voorschriften:

EMC-richtlijn 2004/108/EG.

RoHS-richtlijn 2011/65/EU.

Electrische producten voor de Europese markt voldoen aan de Laagspanningsrichtlijn 2006/95/EG en EC and Verordening(en) voor uitvoering van Richtlijn 2009/125/EG.

Communicatie- of draadloze RF-producten voor de Europese markt voldoen aan de richtlijn R&TTE 1999/5/EG.

LET OP: Om te voldoen aan de Europese CE-norm, moet dit apparaat zijn geïnstalleerd in computerapparatuur die CE-gecertificeerd is voor de Klasse B-limieten.

Alle kabels die worden gebruikt om dit apparaat aan te sluiten, moeten zijn afgeschermd en geaard, en mogen niet langer dan 3 meter zijn. Gebruik met niet-gecertificeerde computers of incorrecte kabels kan leiden tot interferentie van andere apparaten of ongewenste effecten op het product.

AANPASSING: Alle wijzigingen of modificaties die niet uitdrukkelijk zijn goedgekeurd door Creative Technology Limited of een van de gelieerde maatschappijen, kunnen ertoe leiden dat de rechten van de gebruiker met betrekking tot garantie en vrijwaring vervallen.

Conformidade Europeia

Este produto está em conformidade com a seguinte regulamentação:

Directiva EMC 2004/108/EC.

Directiva RoHS 2011/65/UE.

Os produtos com ligação à rede destinados ao mercado europeu estão em conformidade com a directiva de baixa voltagem 2006/95/CE. Directiva de Implementação do(s) Regulamento(s) da Comissão 2009/125/CE.

Os produtos de comunicação/radiofrequência sem fios destinados ao mercado europeu estão em conformidade com a directiva R&TTE 1999/5/CE.

ATENÇÃO: De modo a cumprir com os requisitos da marca CE Europeia, este dispositivo deve ser instalado com equipamento informático com certificação CE que cumpra com os limites de Classe B limits.

Todos os cabos usados para ligar este dispositivo devem ser blindados, ligados à terra e não devem exceder os 3m de comprimento. O funcionamento com computadores não certificados ou cabos incorrectos pode resultar em interferências em outros dispositivos ou provocar efeitos indesejados no produto.

MODIFICAÇÃO: Quaisquer alterações ou modificações que não sejam expressamente aprovadas pela Creative Technology Limited ou por uma das suas afiliadas, pode anular a garantia do utilizador e os direitos inerentes à mesma.

Europeisk efterlevnad

Denna produkt uppfyller följande:

EMC-direktivet 2004/108/EC.

RoHS Direktivet 2011/65/EU.

Produkter för den europeiska marknaden som drivs via elnätet uppfyller Lågspänningsdirektivet 2006/95/EC och Kommissionens regleringsimplementeringsdirektiv 2009/125/EG.

Trådlösa kommunikations/RF-produkter för den europeiska marknaden uppfyller R&TTE-direktivet 1999/5/EC.

WARNING: För att uppfylla CE-kraven i Europa måste denna produkt installeras med CE-certifierad datorutrustning som uppfyller gränsvärdena för klass B.

Alla kablar som används för anslutning av denna produkt måste vara avskärmade, jordade och får inte vara längre än 3 m. Användning med icke certifierade datorer eller felaktiga kablar kan leda till interferens på annan utrustning eller oönskade effekter på produkten.

MODIFIERING: Alla förändringar och modifieringar som inte är uttryckligen tillåtna av Creative Technology limited eller något av dess filialföretag kan göra användarens garanti och garantirättigheter ogiltiga.

Europeisk samsvar

Dette produktet er i samsvar med følgende:

EMC-direktivet 2004/108/EC.

RoHS-Direktivet 2011/65/EU.

Elektriske produkter til det europeiske markedet er i samsvar med Lavspenningsdirektivet 2006/95/EC og Økodesigndirektivet 2009/125/EC.

Kommunikasjon/RF trådløse produkter til det europeiske markedet er i samsvar med R&TTE-direktivet 1999/5/EC.

ADVARSEL: For å overholde det europeiske CE-kravet må denne enheten installeres med CE-sertifisert datautstyr som tilfredsstillende klasse B-grensene.

Alle kabler som kobles til enheten må være skjermet, jordet og ikke lenger enn 3 m i lengde. Bruk av ikke-sertifiserte datamaskiner eller feil kabler kan føre til forstyrrelse av andre enheter eller uønsket effekt på produktet.

MODIFIKASJON: Eventuelle endringer eller modifikasjoner som ikke uttrykkelig er godkjent av Creative Technology Limited eller et av dets tilknyttede selskaper, kan ugyldiggjøre garantien eller garantirettighetene.

Overholdelse af Europæiske regler og standarder

Dette produkt overholder følgende:

EMC-direktivet 2004/108/EC.

RoHS-Direktivet 2011/65/EU.

Produkter til det Europæiske marked, skal overholde Lavspændingsdirektivet 2006/95/EC og Kommissionens forordninger for implementering af direktivet 2009/125/EF.

Kommunikations- / RF-trådløse produkter til det Europæiske overholder R&TTE-direktivet 1999/5/EC.

ADVARSEL: For at overholde Europe CE-kravet, skal denne enheden installeres med CE-certificeret computerudstyr, der opfylder klasse B-grænserne.

Alle kabler der anvendes til at tilslutte enheden skal være skærmede, jordforbundne og ikke længere end 3 m lange. Drift med ikke-certificerede computere og ukorrekte kabler kan medføre interferens for andre enheder eller uønskede effekter på produktet.

MODIFIKATION: Enhver ændring eller modifikation, der ikke er udtrykkeligt godkendt af Creative Technology Limited eller et associerede selskab, vil gøre brugerens garanti og garanterede rettigheder ugyldig.

Eurooppalainen yhdenmukaisuus

Tämä tuote täyttää seuraavat tuotemääritykset:

TEMC-direktiivin 2004/108/EC.

RoHS-direktiivin 2011/65/EU.

Euroopan markkinoiden verkkovirtaa käyttävät tuotteet ovat matalajännitedirektiivin 2006/95/EY mukaisia. Euroopan parlamentin ja neuvoston ohjaava direktiivi 2009/125/EY.

Euroopan markkinoiden tietoliikenne- ja langattomat radiotaajuustuotteet noudattavat R&TTE-direktiiviä 1999/5/EY.

VAROITUS: Jotta tämä laite noudattaisi Euroopan CE-vaatimuksia, tämä laite on asennettava CE-sertifioituun tietokoneeseen, joka noudattaa luokan B rajoituksia.

Kaikki tämän laitteen liittämiseen käytetyt kaapelit tulee suojata ja maadoittaa eivätkä ne saa olla 3 m pidempiä. Luokan rajoituksia noudattamattoman tietokoneen tai vääränlaisten kaapeleiden käyttäminen voi aiheuttaa häiriöitä muihin laitteisiin tai haitata itse laitteen toimintaa.

MUOKKAUKSET: Muutokset tai muokkaukset, joita Creative Technology Limited tai sen tytäryhtiöt eivät nimenomaisesti ole hyväksyneet, voivat mitätöidä tuotteelle annetun takuun.

Evropská shoda

Tento výrobek splňuje následující směrnice:

Směrnice EMC 2004/108/EC.

Směrnice RoHS 2011/65/EU.

Výrobky napájené z elektrické zásuvky pro evropský trh splňují směrnici o nízkém napětí 2006/95/EC a směrnici komise 2009/125/EC o zavádění předpisů.

Komunikační / vysokofrekvenční bezdrátové výrobky pro evropský trh splňují směrnici R&TTE 1999/5/EC.

UPOZORNĚNÍ: Aby toto zařízení splňovalo evropský požadavek CE, musí být nainstalováno s počítačovým vybavením s certifikátem CE, které splňuje limity pro zařízení třídy B.

Veškeré kabely používané pro připojení tohoto zařízení musí být stíněné, uzemněné a nesmí být delší než 3 metry. Při používání s necertifikovanými počítači nebo nesprávnými kabely může dojít k rušení jiných zařízení nebo k nežádoucím vlivům na produkt.

ÚPRAVY: Jakékoli změny nebo úpravy, které nebyly vysloveně schváleny společností Creative Technology Limited nebo některou z jejích dceřiných společností, mohou způsobit propadnutí záruky uživatele a záručních práv.

Zgodność z przepisami europejskimi

Urządzenie jest zgodne z

dyrektywą EMC 2004/108/EC.

Dyrektywa RoHS 2011/65/UE.

Urządzenia zasilane z sieci elektrycznej przeznaczone na rynek europejski muszą być zgodne z dyrektywą dotyczącą urządzeń niskonapięciowych 2006/95/EC oraz z dyrektywą wdrażającą komisji regulacyjnej 2009/125/WE.

Urządzenia komunikacyjne / bezprzewodowe wykorzystujące transmisję radiową przeznaczone na rynek europejski spełniają warunki dyrektywy RTTE 1999/5/EC.

UWAGA: Aby uzyskać zgodność z wymogami europejskiej normy CE urządzenie musi być zainstalowane wraz ze sprzętem komputerowym mającym certyfikat CE z ograniczeniami klasy B.

Wszystkie przewody używane do podłączania niniejszego urządzenia muszą być ekranowane, uziemione i nie dłuższe niż 3 metry. Użytkowanie z komputerami nie posiadającymi certyfikatów lub wykorzystanie niewłaściwych przewodów może powodować zakłócenia pracy innych urządzeń lub opisywanego urządzenia.

MODYFIKACJE: Dokonanie jakichkolwiek zmian lub modyfikacji, na które firma Creative Technology Limited lub spółki z nią stowarzyszone nie udzielają wyraźnej zgody, może doprowadzić do unieważnienia praw gwarancji i rękojmi użytkownika.

Соответствие европейским нормам

Данное изделие соответствует следующим стандартам:

EMC Директива 2004/108/EC.

Продукция с питанием от сети, поставляемая на европейский рынок, соответствует Директиве по низковольтному оборудованию 2006/95/EC и Имплементирующей директиве постановления (-й) комиссии 2009/125/EC.

Коммуникационное/радио- беспроводное оборудование, поставляемое на европейский рынок, соответствует Директиве по окончному радио- и телекоммуникационному оборудованию 1999/5/EC.

ВНИМАНИЕ! Для обеспечения соответствия европейским требованиям CE, это устройство должно устанавливаться с компьютерным оборудованием, сертифицированным по стандарту CE и удовлетворяющим нормам класса B.

Все кабели, используемые для подключения данного устройства, должны быть экранированы, заземлены и иметь длину не более 3 м. Работа с несертифицированными компьютерами или неподходящими кабелями может привести к возникновению помех другим устройствам или негативному влиянию на работу самого изделия.

ИЗМЕНЕНИЯ КОНСТРУКЦИИ Любые изменения конструкции, на которые не было получено прямое разрешение компании Creative Technology Limited или ее дочерней компании, может привести к аннуляции гарантии и связанных с ней прав.

Ευρωπαϊκή συμμόρφωση

Εξαιρέσεις: Η παρούσα δήλωση συμμορφώνεται με τα παρακάτω:

2004/108/ΕΚ, η οδηγία σχετικά με την ηλεκτρομαγνητική συμβατότητα. 2011/65/ΕΥ, RoHS.

Η παρούσα δήλωση συμμορφώνεται με τις απαιτήσεις της οδηγίας 2006/95/ΕΚ σχετικά με την ασφάλεια των προϊόντων σχετικά με την ηλεκτρομαγνητική συμβατότητα.

Η παρούσα δήλωση συμμορφώνεται με τις απαιτήσεις της οδηγίας 2009/125/ΕΚ σχετικά με την ενεργειακή απόδοση.

Η παρούσα δήλωση συμμορφώνεται με τις απαιτήσεις της οδηγίας 1999/5/ΕΚ σχετικά με την ηλεκτρομαγνητική συμβατότητα.

FIGYELEM! Η παρούσα δήλωση συμμορφώνεται με τις απαιτήσεις της οδηγίας 2006/95/ΕΚ σχετικά με την ασφάλεια των προϊόντων σχετικά με την ηλεκτρομαγνητική συμβατότητα.

Η παρούσα δήλωση συμμορφώνεται με τις απαιτήσεις της οδηγίας 2006/95/ΕΚ σχετικά με την ασφάλεια των προϊόντων σχετικά με την ηλεκτρομαγνητική συμβατότητα.

ΜΟΔΟΣΙΤΑΣ: Μια οποιαδήποτε αλλαγή ή τροποποίηση που δεν έχει εγκριθεί ρητά από την Creative Technology Limited ή κάποια από τις θυγατρικές της ενδέχεται να ακυρώσουν την εγγύηση του χρήστη και τα δικαιώματα που απορρέουν από αυτήν.

Ευρωπαϊκή συμμόρφωση

Η παρούσα δήλωση συμμορφώνεται με τα παρακάτω:

Οδηγία ΗΜΣ 2004/108/ΕΚ.

Οδηγία RoHS 2011/65/ΕΕ.

Τα προϊόντα που λειτουργούν με ρεύμα για την ευρωπαϊκή αγορά συμμορφώνονται με την Οδηγία περί χαμηλής τάσης 2006/95/ΕΚ και τους κανονισμούς της επιτροπής που υλοποιούν την οδηγία 2009/125/ΕΚ.

Τα ασύρματα προϊόντα επικοινωνιών / RF για την ευρωπαϊκή αγορά συμμορφώνονται με την οδηγία R&TTE 1999/5/ΕΚ.

ΠΡΟΣΟΧΗ: Για τη συμμόρφωση με τις απαιτήσεις του ευρωπαϊκού CE, αυτή η συσκευή θα πρέπει να εγκατασταθεί σε εξοπλισμό υπολογιστή με πιστοποίηση CE ο οποίος πληροί τα όρια της κατηγορίας Β.

Όλα τα καλώδια που χρησιμοποιούνται για τη σύνδεση της συσκευής θα πρέπει να είναι θωρακισμένα, γειωμένα και να μην υπερβαίνουν σε μήκος τα 3μ. Η λειτουργία με μη πιστοποιημένους υπολογιστές ή λάθος καλώδια μπορεί να οδηγήσει σε παρεμβολές με άλλες συσκευές ή ανεπιθύμητες επιδράσεις στο προϊόν.

ΤΡΟΠΟΠΟΙΗΣΗ: Οι όποιες αλλαγές ή τροποποιήσεις που δεν έχουν εγκριθεί ρητά από την Creative Technology Limited ή κάποια από τις θυγατρικές της ενδέχεται να ακυρώσουν την εγγύηση του χρήστη και τα δικαιώματα που απορρέουν από αυτήν.

Europos Sąjungos atitiktis

Šis gaminys atitinka šiuos reikalavimus:

„Elektromagnetinės atitikties“ („EMC“) direktyva 2004/108/EC.

RoHS direktyva 2011/65/ES.

Produktai, kurie veikia maitinami iš elektros tinklo, skirti Europos rinkai, atitinka Žemos įtampos direktyvą 2006/95/EB.

Komisijos reglamentas(-ai) dėl Direktyvos 2009/125/EB įgyvendinimo.

Europos Sąjungos rinkai skirti ryšių / radijo dažnių bevieliai gaminiai atitinka 1999/5/EB direktyvą „Dėl radijo ryšio įrenginių ir telekomunikacijų galinių įrenginių bei abipusio jų atitikties pripažinimo“.

ATSARGIAI: Tam, kad šis prietaisas atitiktų Europos Sąjungos „CE“ reikalavimus, jis turi būti įdiegtas į „CE“ sertifikuotą kompiuterinę įrangą, atitinkančią „B“ klasės ribas. Visi su šiuo prietaisu naudojami laidai turi būti ekranuoti, išeminti ir neviršyti 3 m ilgio. Nesertifikuotų kompiuterių ar netinkamų laidų naudojimas gali tapti trikdžių kitiems prietaisams arba nepageidaujamų šio gaminio veikimo pasekmių priežastimi.

MODIFIKAVIMAS: Bet kokie pakeitimai ar modifikavimai neturint aiškiai patvirtinto „Creative Technology Limited“ ar vienos iš su ja susijusių bendrovių leidimo gali panaikinti vartotojo garantiją ir garantijos teises.

Dođržiavanie predpisov Európskej únie

Tento výrobok splna nasledujúce normy:

Smernica EMC 2004/108/ES.

Smernica RoHS 2011/65/EÚ.

Výrobky napájané zo siete určené na európsky trh sú v súlade so smernicou o harmonizácii právnych predpisov členských štátov týkajúcich sa elektrického zariadenia určeného na používanie v rámci určitých limitov napätia 2006/95/ES a s nariadeniami Komisie, ktorými sa vykonáva smernica 2009/125/ES.

Bezdrôtové komunikacné/RF výrobky určené na európsky trh sú v súlade so smernicou R&TTE 1999/5/ES.

VAROVANIE: Toto zariadenie musí byť nainštalované s počítačovým zariadením s certifikáciou CE, ktoré splna limity triedy B, aby bolo v súlade s európskymi požiadavkami CE.

Všetky káble použité na pripojenie tohto zariadenia musia byť tienené, uzemnené a nie dlhšie ako 3 m. Prevádzka pomocou necertifikovaných počítačov alebo nesprávnych káblov môže mať za následok rušenie iných zariadení alebo nežiaduce účinky na výrobok.

ÚPRAVY: Akékoľvek zmeny alebo úpravy, ktoré neboli výslovne odsúhlasené spoločnosťou Creative Technology Limited alebo jednou z jej sesterských spoločností, môžu zrušiť platnosť záruky a záručných práv používateľa.

Avrupa Uyumu

Bu ürün aşağıdakilere uygundur:

2004/108/EC EMC (Elektromanyetik Uyumluluk) Yönetmeliği.

2011/65/EC RoHS (Tehlikeli Maddelerin Kısıtlanması) Yönetmeliği

Avrupa piyasasına yönelik, elektrik şebekesi tarafından çalıştırılan ürünler 2006/95/EC Alçak Gerilim Yönetmeliği (LVD) ve 2009/125/EC Enerji ile İlgili Ürünlerin Çevreye Duyarlı Tasarımına İlişkin Yönetmeliğe uygundur.

Avrupa piyasasına yönelik İletişim / RF kablosuz ürünleri R ve TTE Yönetmeliği 1999/5/EC ile uyumludur.

DİKKAT: Avrupa CE gereksinimleriyle uyumlu olması için bu cihazın, B Sınıfı sınırlarına uygun olan CE sertifikalı bilgisayar donanımları ile birlikte kurulması gerekir.

Bu cihazı bağlamak için kullanılan tüm kabloların koruyuculu ve topraklanmış olması ve 3 metreden uzun olmaması gerekir. Sertifikalı olmayan bilgisayarlarla veya yanlış kablolarla birlikte kullanılması, diğer cihazların düzgün çalışmamasına veya üründe istenmeyen etkiler görülmesine neden olabilir.

DEĞİŞİKLİKLER: Creative Technology Limited veya bağlı şirketlerinden biri tarafından açıkça onaylanmamış tüm değişiklikler kullanıcının garanti ve teminat haklarını geçersiz kılabilir.

Ukraine RoHS Statement

Обладнання відповідає вимогам Технічного регламенту щодо обмеження використання деяких небезпечних речовин в електричному та електронному обладнанні, затвердженого постановою Кабінету Міністрів України від 3 грудня 2008 № 1057

Notice for Japan

充電式電池のリサイクル



Li-ion

充電式リチウム電池はリサイクル可能な資源です。

- Creative製品に埋め込まれている充電式リチウム電池をリサイクルするために、本体から電池を取り外さないでください。リサイクルに関する情報および指示については、Creative Media K Kカスタマーサポート <http://jp.creative.com/support/contact/> (日本語) をご覧ください。
- 交換可能な (取り外し可能な) 充電式リチウム電池のリサイクルについては、以下をご覧ください。



注意事項

- 充電式リチウム電池が完全に放電した場合、取り外すことを推奨します。
- 電池の金属部分にはセロハンテープなどの絶縁物質で覆うなど、注意が必要です。
- 充電式電池のリサイクルおよび回収、および対応店舗に関する情報は、JBRCのホームページをご覧ください。 (<http://www.jbrc.com/>)

Notice for Korea

B급 기기

(가정용 방송통신기자재)


Class B Equipment

(For Home Use Broadcasting & Communication Equipment)

이 기기는 가정용 (B급) 전자파 적합기기로서 주로 가정에서 사용하는 것을 목적으로 하며, 모든 지역에서 사용할 수 있습니다.

This equipment is home use (Class B) electromagnetic wave suitability equipment and to be used mainly at home an it can be used in all areas.

Notice for China



此图示为“电子信息产品污染控制标志”，是企业用于声明其产品符合《电子信息产品污染控制管理办法》有关标识要求的唯一有效标志。图示中间的数字明示电子信息产品的环保使用期限（单位为年，起始日期为产品的生产日期）；图形外圈由带有箭头的线条组成一个循环起来的圆，表示该电子信息产品可回收利用。此图示含义为：该电子信息产品可能含有某些有毒有害物质（如下表所示），在环保使用期限内可以放心使用，超过环保使用期限之后则应该进入回收循环系统。

部件名称*	有毒有害物质或元素					
	铅 (Pb)	汞 (Hg)	镉 (Cd)	六价铬 (Cr ⁶⁺)	多溴联苯 (PBB)	多溴二苯醚 (PBDE)
显示面板	X	X	○	○	○	○
电源线/适配器	X	○	○	○	○	○
电池	X	○	○	○	○	○
遥控器 (含电池)	X	○	○	○	○	○
电路板组件	X	○	○	○	○	○

“○”：表示该有毒有害物质在该部件所有均质材料中的含量均在SJ/T 11363-2006标准规定的限量要求以下。
 “X”：表示该有毒有害物质至少在该部件的某一均质材料中的含量超出SJ/T 11363-2006标准规定的限量要求，其原因为目前业界还没有可替代的技术。
 *：各个型号的产品规格及所含部件可能有所不同，应将产品中的任何可充电电池组脱离系统单独考虑，因为电池组的“环保使用期限”可能比整个系统的要短，一般为5年。

Vietnam RoHS Statement

This product is in compliance with Circular 30/2011/TTBCT of the Ministry of Trade of the Socialist Republic of Vietnam (“Circular”), it does not contain the following substances in concentration greater than the Maximum Limit value as specified in the Circular.

Substance	Maximum Limit (ppm) ^{1, 2}
• lead	1000
• mercury	1000
• cadmium	100
• hexavalent chromium	1000
• polybrominated biphenyls (PBB)	1000
• polybrominated diphenyl ethers (PBDE)	1000

¹ Maximum Limit does not apply to applications exempted from the Circular.

² Maximum Limit refers to concentration by weight in homogeneous materials.

Notice for Singapore

Complies with
IDA Standard
DB00148

License and Copyright

Information in this document is subject to change without notice and does not represent a commitment on the part of Creative Technology Ltd. No part of this manual may be reproduced or transmitted in any form or by any means, electronic or mechanical, including photocopying and recording, for any purpose without the written permission of Creative Technology Ltd.

© 2014 Creative Technology Ltd. All rights reserved. Creative, the Creative logo, Sound Blaster, the Sound Blaster logo, SBX Pro Studio, the SBX logo and CrystalVoice are trademarks or registered trademarks of Creative Technology Ltd. in the United States and/or other countries. The *Bluetooth*[®] word mark and logos are owned by Bluetooth SIG, Inc. and any use of such marks by Creative Technology Ltd is under license. Intel and Intel Core are trademarks of Intel Corporation in the U.S. and/or other countries. AMD is a registered trademark of Advanced Micro Devices, Inc. Microsoft, Windows and Windows Vista are registered trademarks of Microsoft Corporation. iPhone, iPad, Mac, Mac OS and OS X are registered trademarks of Apple Inc. Android is a trademark of Google Inc. aptX is a trademark of CSR plc. Other trademarks and trade names are those of their respective owners. All specifications are subject to change without prior notice. Use of this product is subject to a limited hardware warranty. Actual contents may differ slightly from those pictured. The software included in this packaging may not be used separately from the hardware. Before using the software, you must agree to be bound by the terms and conditions of the end user license agreement.

Version 1.0

July 2014