



Live Smart. Enjoy Life.

Congratulations on the purchase of your Ecovacs Robotics DEEBOT!

We hope it brings you many years of satisfaction. We trust the purchase of your new robot will help keep your home clean and provide you with more quality time to do other things.

Before you go any further, please register your product on the Ecovacs website at **www.ecovacsrobotics.com/registration/**. We also suggest you record your model number, serial number, date of purchase and attach your receipt to this page for safekeeping.

MODEL # _____

SERIAL # _____

DATE OF PURCHASE ____ / ____ / ____

Should you have any problems programming the robot or getting your robot to function properly, please call us before contacting or returning it to the place of purchase. For more information, assistance or Warranty information, please visit the Ecovacs Robotics website at **www.ecovacsrobotics.com** or call 1-844-ECOVACS (1-844-326-8227).

Thank you for choosing DEEBOT!

Contents

1. Important Safety Instructions	2
2. Package Contents and Technical Specifications	4
2.1 Package Contents.....	4
2.2 Specifications.....	4
2.3 Product Diagram.....	5
3. Operating and Programming	7
3.1 Notes Before Cleaning.....	7
3.2 Quick Start.....	8
3.3 Cleaning Mode Selection.....	11
3.4 Programming the Robot.....	12
3.5 Choosing a Suction Option (D83 model ONLY).....	15
3.6 Voice Reporting (D83 model ONLY).....	16
4. Maintenance	17
4.1 Dust Bin and Filters.....	17
4.2 Cleaning Cloth.....	18
4.3 Main Brush, Direct Suction Option and Side Brushes.....	18
4.4 Other Components.....	19
5. Troubleshooting	20

1. Important Safety Instructions

When using an electrical appliance, basic precautions should always be followed, including the following:

READ ALL INSTRUCTIONS BEFORE USING THIS APPLIANCE.

SAVE THESE INSTRUCTIONS

1. This Appliance is not intended to be used by children under 8 or anyone lacking knowledge on proper use. Supervision may be necessary. Do not allow children to sit on or play with the Appliance.
2. Clear the area to be cleaned. Remove power cords and small objects from the floor that could entangle the Appliance. Tuck rug fringe under the rug base, and lift items such as curtains and tablecloths off the floor.
3. If there is a drop off in the cleaning area due to a step or stairs, you should operate the Appliance to ensure that it can detect the step without falling over the edge. It may become necessary to place a physical barrier at the edge to keep the unit from falling. Make sure the physical barrier is not a trip hazard.
4. Only use as described in this manual. Only use attachments recommended or sold by the manufacturer.
5. Please make sure your power supply voltage matches the power voltage marked on the Charging Dock.
6. For INDOOR household use ONLY. Do not use the Appliance in outdoor, commercial or industrial environments.
7. Use only the original rechargeable battery and Charging Dock provided with the Appliance from the manufacturer. Non-rechargeable batteries are prohibited. For battery information, please refer to Specifications section.
8. Do not use without dust bin and/or filters in place.
9. Do not operate the Appliance in an area where there are lit candles or fragile objects.
10. Do not use in extremely hot or cold environments (below -5°C/23°F or above 40°C/104°F).
11. Keep hair, loose clothing, fingers, and all parts of body away from any openings and moving parts.
12. Do not operate the Appliance in a room where an infant or child is sleeping.
13. Do not use Appliance on wet surfaces or surfaces with standing water.
14. Do not allow the Appliance to pick up large objects like stones, large pieces of paper or any item that may clog the Appliance.
15. Do not use Appliance to pick up flammable or combustible materials such as gasoline, printer or copier toner, or use in areas where they may be present.
16. Do not use Appliance to pick up anything that is burning or smoking, such as cigarettes, matches, hot ashes, or anything that could cause a fire.
17. Do not put objects into the suction intake. Do not use if the suction intake is blocked. Keep the intake clear of dust, lint, hair, or anything that may reduce air flow.
18. Take care not to damage the power cord. Do not pull on or carry the Appliance or Charging Dock by the power cord, use the power cord as a handle, close a door on the power cord, or pull power cord around sharp edges or corners. Do not run Appliance over the power cord. Keep power cord away from hot surfaces.
19. If the power cord is damaged, it must be replaced by the manufacturer or its service agent in order to avoid a hazard.
20. Do not use the Charging Dock if it is damaged.
21. Do not use with a damaged power cord or receptacle. Do not use the Appliance or Charging Dock if it is not working properly, has been dropped, damaged, left outdoors, or come in contact with water. It must be repaired by the manufacturer or its service agent in order to avoid a hazard.

1. Important Safety Instructions

22. Turn OFF the power switch before cleaning or maintaining the Appliance.
23. The plug must be removed from the receptacle before cleaning or maintaining the Charging Dock.
24. Remove the Appliance from the Charging Dock, and turn OFF the power switch to the Appliance before removing the battery for disposal of the Appliance.
25. The battery must be removed and discarded according to local laws and regulations before disposal of the Appliance.
26. Please dispose of used batteries according to local laws and regulations.
27. Do not incinerate the Appliance even if it is severely damaged. The batteries can explode in a fire.
28. When not using the Charging Dock for a long period of time, please unplug it.
29. The Appliance must be used in accordance with the directions in this Instruction Manual. ECOVACS Robotics cannot be held liable or responsible for any damages or injuries caused by improper use.

For EU Countries

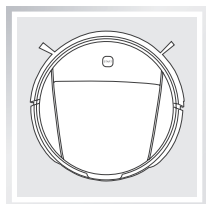


Correct Disposal of this product

This marking indicates that this product should not be disposed of with other household waste throughout the EU. To prevent possible harm to the environment or human health from uncontrolled waste disposal, recycle it responsibly to promote the sustainable reuse of material resources. To recycle your used device, please use the return and collection systems or contact the retailer where the product was purchased. They can safely recycle this product.

2. Package Contents and Technical Specifications

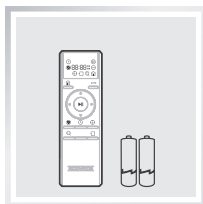
2.1 Package Contents



Robot



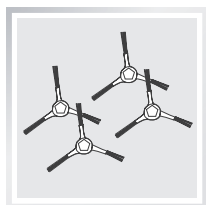
Charging Dock



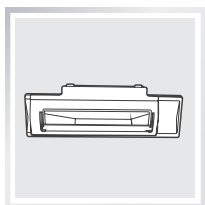
Remote Control with
Batteries



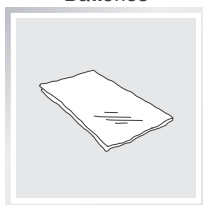
Instruction Manual



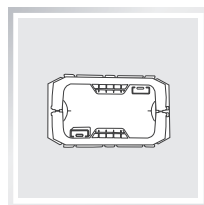
(4) Side Brushes



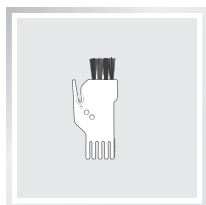
Direct Suction Option
(D83 model ONLY)



Washable/Reusable
Microfiber Cleaning Cloth



Cleaning Cloth Plate



Multi-Function
Cleaning Tool



(10) Disposable Dry
Cleaning Cloths



(10) Disposable Wet
Cleaning Cloths

2.2 Specifications

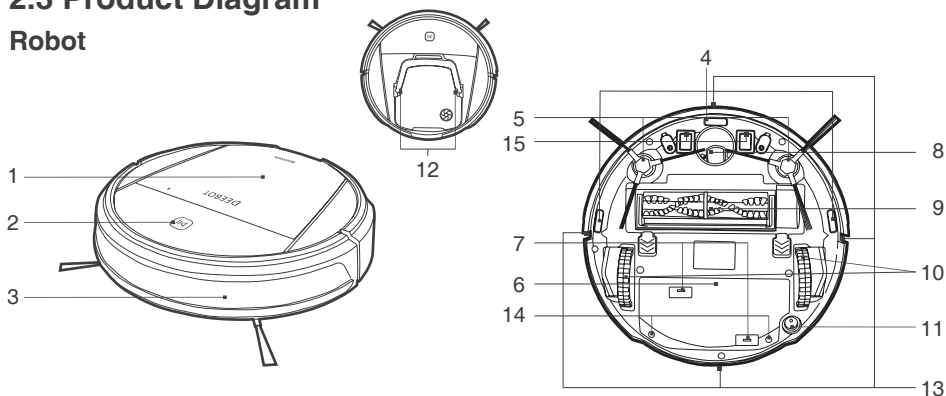
Model	D80/D83		
Working Voltage (V)	12===	Rated Power (W)	30
Charging Dock Model	CH1442B		
Rated Input Voltage (V)	100-240~	Rated Output Voltage (V)	14.5===
Rated Output Current (A)	0.75	Rated Power (W)	20
Remote Control Model	RC1360A	Input voltage (V)	3===
Battery	Ni-MH 2500mAh		

* Technical and design specifications may be changed in the course of continuous product improvement.

2. Package Contents and Technical Specifications

2.3 Product Diagram

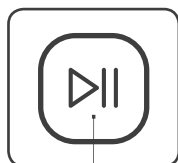
Robot



- | | |
|-------------------------------|------------------------------------------|
| 1. Top Cover | 9. Main Brush Option |
| 2. Control Panel | 10. Driving Wheels |
| 3. Anti-Collision Sensors | 11. Bottom Power Switch |
| 4. Anti-Drop Sensors | 12. Dust Sensors |
| 5. Side Brushes | 13. Infrared Receiver for Remote Control |
| 6. Battery Cover | 14. Battery Cover Screws |
| 7. Cleaning Cloth Plate Slots | 15. Charging Contacts |
| 8. Universal Wheel | |

Control Panel

D80



3

D83



1

2

3

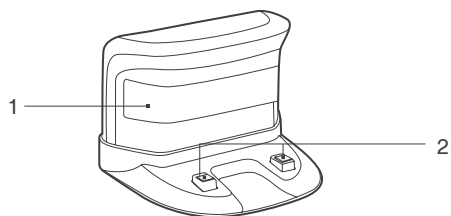
4

5

- | | |
|------------------------------|-----------------------------------|
| 1. Spot Cleaning Mode Button | 4. Intensive Cleaning Mode Button |
| 2. Edge Cleaning Mode Button | 5. Return to Charger Mode Button |
| 3. START/PAUSE Button | |

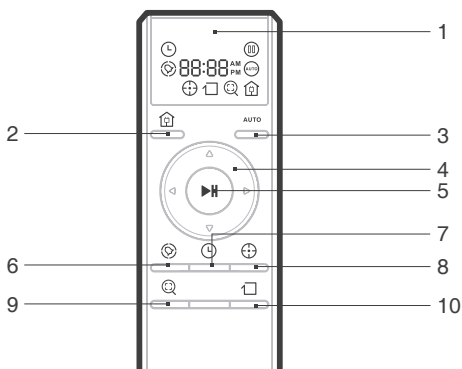
2. Package Contents and Technical Specifications

Charging Dock



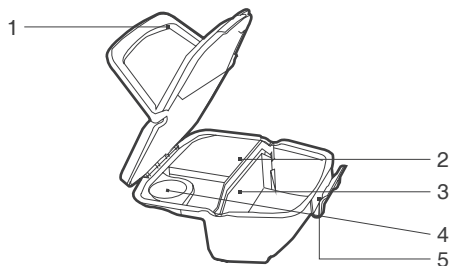
1. Infrared Signal Generator
2. Charging Dock Pins

Remote Control



1. LED Screen
2. Return to Charger Mode Button
3. AUTO Mode Button
4. Direction Control Buttons
5. START/PAUSE Button
6. Time Scheduling Button
7. Set Current Time Button
8. Spot Cleaning Mode Button
9. Intensive Cleaning Mode Button
10. Edge Cleaning Mode Button

Dust Bin

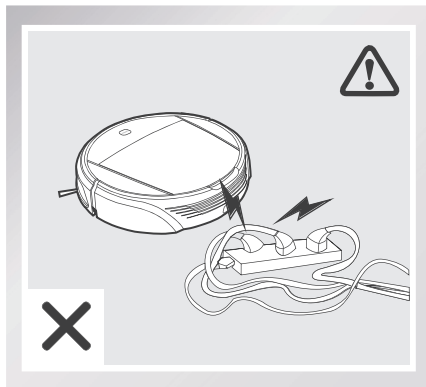


1. Dust Bin Handle
2. High Efficiency Filter
3. Filter Net
4. Air Outlet
5. Dust Bin Lock

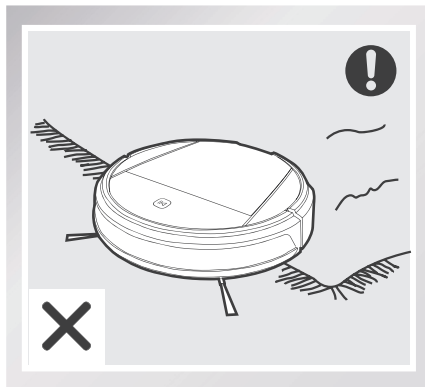
3. Operating and Programming

3.1 Notes Before Cleaning

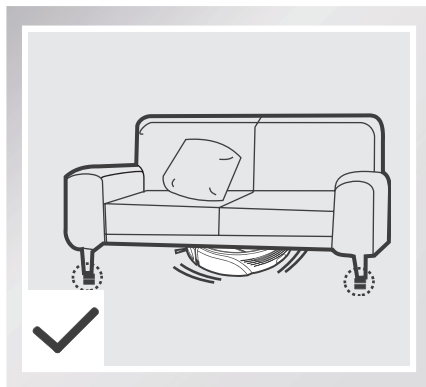
Before Operating DEEBOT, take a few moments to survey the area to be cleaned and remove any obstacles.



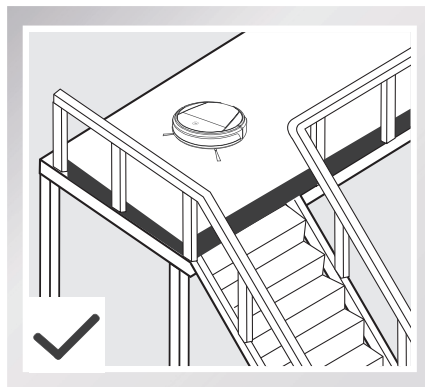
Remove power cords and small objects from the floor that could entangle the product.



The product is not suitable for use on long-pile carpet. Before using the product near an area rug or on a short-pile area rug with tasseled edges, please fold area rug edges under themselves.



Please be aware that the robot needs at least a 10 cm (4") clearance to clean under furniture without complications.



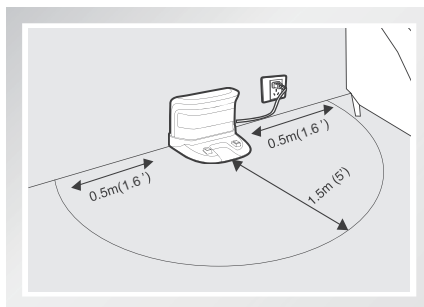
If there is a step or stairs in the cleaning area, please operate DEEBOT 8 to ensure its Anti-Drop Sensors can detect the drop off. It may be necessary to place a physical barrier at the edge of the drop off to keep the unit from falling over the edge.

3. Operating and Programming

3.2 Quick Start

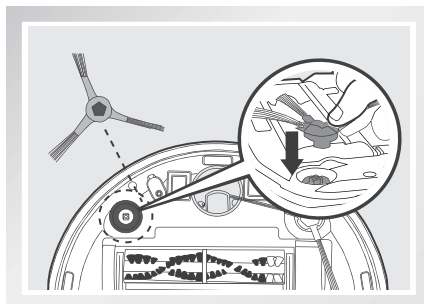
1 Charging Dock Placement

- Place the Charging Dock on a level floor surface against the wall with the base perpendicular to the ground. Keep the immediate area 1.5m (5') in front of the charger and 0.5m (1.6') on both sides of the charger clear of objects and reflective surfaces.
- Plug the Charging Dock in.



2 Install Side Brushes

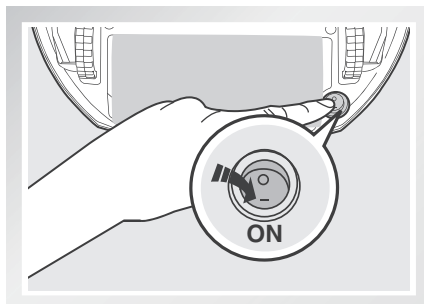
- Attach Side Brushes to the bottom of DEEBOT 8 by pressing a brush into each slot with the matching color until it clicks.



3 Power ON

- Turn the robot's Bottom Power Switch to the ON position. "I" indicates ON and "O" indicates OFF.

* When DEEBOT 8 is not working, it is suggested to keep it powered ON and charging, instead of powered OFF.

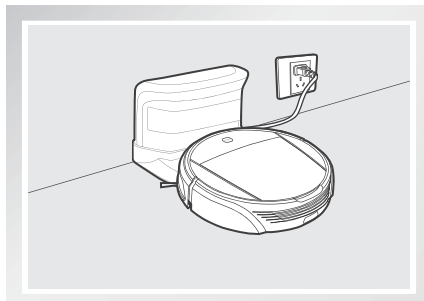


3. Operating and Programming

4 Charge DEEBOT 8

- Place DEEBOT 8 on the Charging Dock making sure the Charging Contacts on DEEBOT 8 and the Charging Dock Pins make a connection.

Charge DEEBOT 8 for at least 12 hours before the first use.

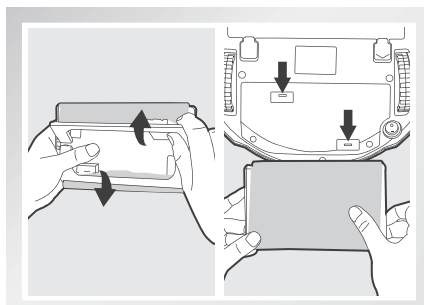


- * The START/PAUSE Button on the robot's Control Panel blinks when DEEBOT 8 is charging and stays on when DEEBOT 8 is fully charged.
- * If DEEBOT 8's START/PAUSE Button Blinks RED while charging, move the Bottom Power Switch to the ON position.
- * Remove DEEBOT 8's battery if the robot will not be used for a long time. In case of battery leakage, please remove the battery and wipe the battery slot clean while wearing protective gloves.
- * If battery is fully discharged or not used for a long time, its capacity may decrease and need to be reactivated.
- * To reactivate the battery: Place the robot on the Charging Dock by hand, remove after charging for 3 minutes; repeat 3 times, then charge normally for 3-5 hours.
- * DEEBOT 8 uses a long life battery, and does not require frequent replacement. To replace the battery, contact Customer Service or follow the below instructions:
 - Unscrew the Battery Cover Screws, remove Battery Cover.
 - Remove the battery and disconnect the fasteners.
 - Connect the corresponding positive and negative fasteners on the new battery. Insert the new battery, reassemble the Battery Cover and screw in the Battery Cover Screws.

5 Attach a Cleaning Cloth

- To use DEEBOT 8's optional mopping feature, attach a selected Cleaning Cloth before use. When using the mopping feature, fold area rug edges under themselves so DEEBOT 8 avoids the rug.

- * Attach the selected Cleaning Cloth to the Cleaning Cloth Plate.
- * Insert the Cleaning Cloth Plate tabs into the Cleaning Cloth Plate Slots on the bottom of DEEBOT 8 until you hear a click.

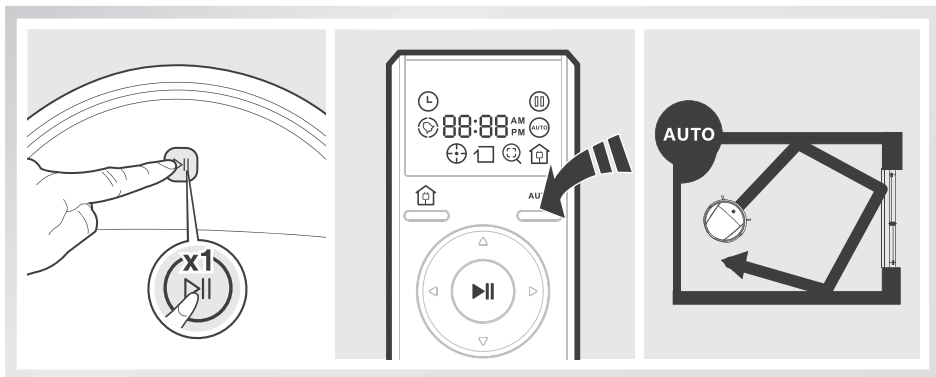


3. Operating and Programming

6 Start

- Press the START/PAUSE Button on the robot's Control Panel, or the AUTO Mode Button on the Remote Control twice. DEEBOT 8 starts to work immediately in AUTO Cleaning Mode.

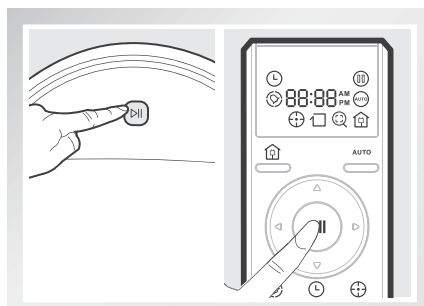
* To choose another Cleaning Mode, please refer to section 3.3 Cleaning Mode Selection for details.



7 Pause

- Pause DEEBOT 8 by pressing the START/PAUSE Button on the robot's Control Panel or on the Remote Control.

* DEEBOT 8 can be directed to move forward, backward, left and right using the Direction Control Buttons on the Remote Control when it is Paused. DEEBOT 8 does not clean when Paused.



3. Operating and Programming

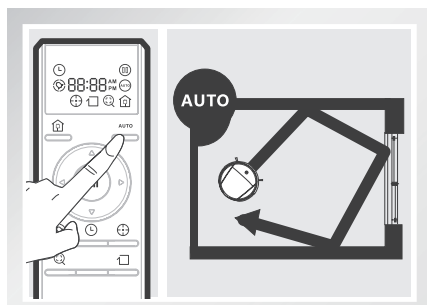
3.3 Cleaning Mode Selection

DEEBOT 8 has several Cleaning Modes for you to choose from to effectively clean different floors. Cleaning Modes are selected using the robot's Control Panel Buttons (D83 model ONLY), or using the Remote Control.

- * To switch Cleaning Modes using the robot's Control Panel Buttons (D83 model only), Pause DEEBOT 8 first, and then press the desired Cleaning Mode Button on the Control Panel.
- * To switch Cleaning Modes using the Remote Control, press the desired Cleaning Mode Button twice.

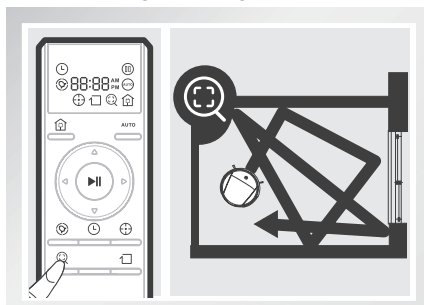
AUTO Cleaning Mode

This is the most commonly used mode. In AUTO Cleaning Mode, DEEBOT 8 cleans in a straight line and changes direction when it meets an obstacle.



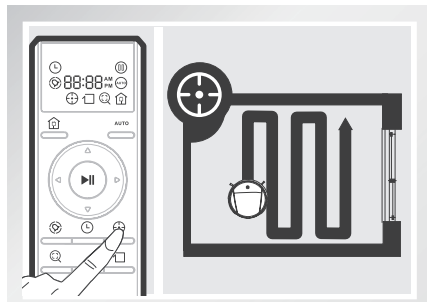
Intensive Cleaning Mode

This mode is good for aggressive cleaning or for extremely dirty or dusty floors. In this mode, DEEBOT 8 follows the same cleaning pattern as Automatic Cleaning Mode, but is more sensitive to dirt and dust and performs a more thorough cleaning.



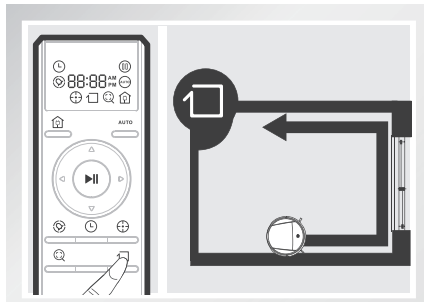
Spot Cleaning Mode

This mode is applicable for an area of highly concentrated dirt or dust. In Spot Cleaning Mode, DEEBOT 8 focuses on a specific area to clean.



Edge Cleaning Mode

This mode is good for cleaning the edges and corners of a room. In Edge Cleaning Mode, DEEBOT 8 cleans along a border (e.g. wall).

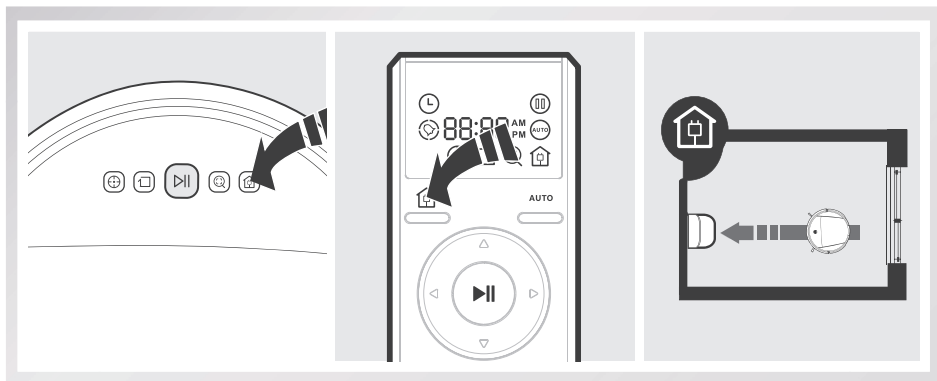


3. Operating and Programming

Return to Charger Mode

When battery power gets low, DEEBOT 8 automatically switches to Return to Charger Mode and returns to the Charging Dock to recharge itself.

DEEBOT 8 can also be sent back to the Charging Dock at any time by Pausing DEEBOT 8, then pressing the Return to Charger Mode Button on the robot's Control Panel (D83 model ONLY), or pressing the Return to Charger Mode Button on the Remote Control twice.



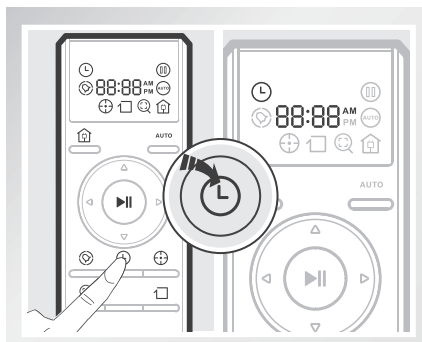
3.4 Programming the Robot

DEEBOT 8 has a Time Scheduling function. DEEBOT 8 can be programmed to automatically clean once per day, at a specific time, even if nobody is at home. The current time of day and the cleaning time are scheduled using the Remote Control.



- * All scheduled cleanings are performed in AUTO Cleaning Mode.
- * Before programming the robot, press any button on the Remote Control to wake up the Remote Control LED Screen. The Remote Control uses a 12-hour clock with "AM" and "PM" indicators.

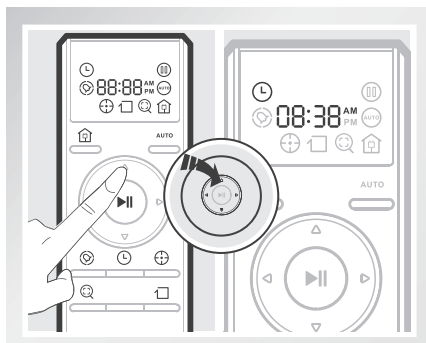
1 Set the Current Time of Day


- Press button on the Remote Control until flashes, and 88:88 illuminates on the Remote Control LED Screen.

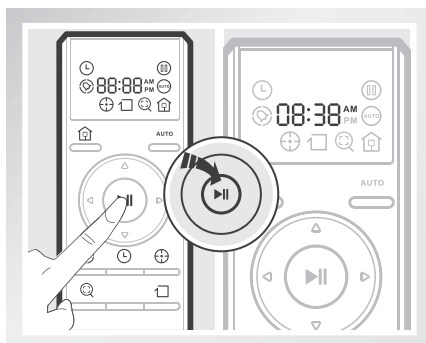


3. Operating and Programming



- Press the up and down Direction Control Buttons  to adjust “hour” and “minute” number. Press the left and right Direction Control Buttons  to switch between hour, minute and AM/PM.



- Press  button on the Remote Control to confirm and save the current time of day.


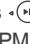


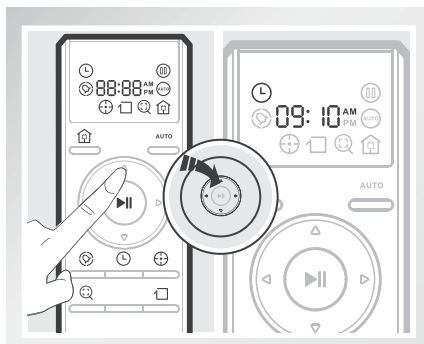
2 Schedule the Cleaning Time


- Press  button on the Remote Control until  flashes and 88:88 illuminates on the Remote Control LED Screen.

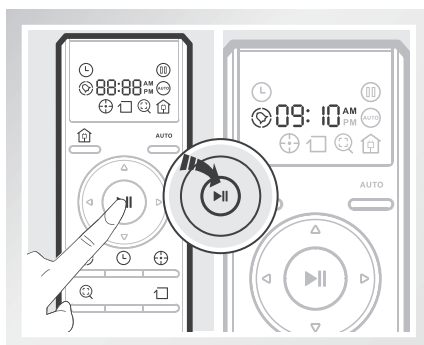


3. Operating and Programming



- Press the up and down Direction Control Buttons  to adjust "hour" and "minute" number. Press the left and right Direction Control Buttons  to switch between hour, minute and AM/PM.

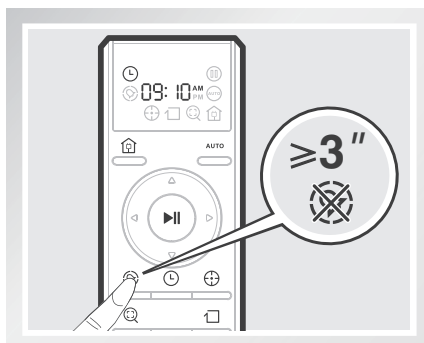


- Press  button to confirm and save the scheduled cleaning time. DEEBOT 8 automatically cleans at the scheduled cleaning time every day.



3 Cancel Scheduled Cleaning Time

- Press and hold  button until  disappears from the Remote Control's LED screen. The scheduled cleaning time is cancelled.



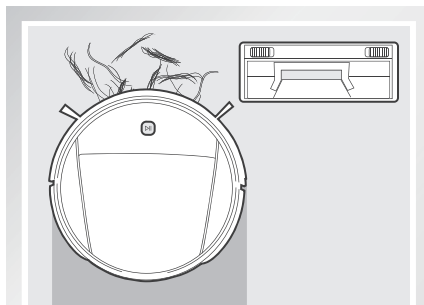
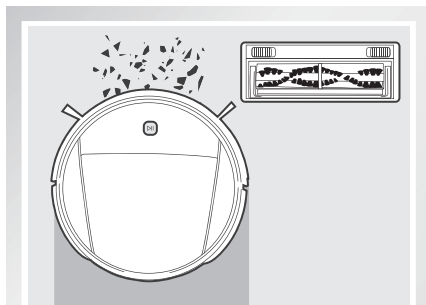
3. Operating and Programming

3.5 Choosing a Suction Option (D83 model ONLY)

D83 has 2 interchangeable suction options for your convenience.

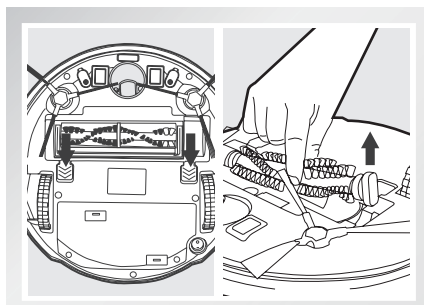
Main Brush Option: The best choice for deep cleaning with a combination of the Main Brush and strong suction. The Main Brush Option comes pre-installed in DEEBOT 8.

Direct Suction Option: The best choice for daily cleaning with the Main Brush removed for direct suction. This Suction Option is specifically designed to pick up hair without tangling. (D83 model ONLY)

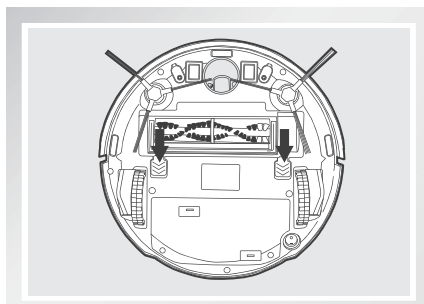


1 Install the Direct Suction Option

- Turn the robot over. Push both yellow buttons below the Main Brush Option at the same time, and remove the Main Brush Cover. Remove the Main Brush.



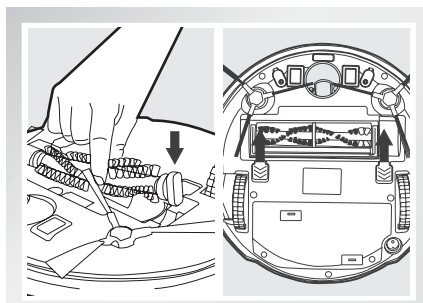
- Line up the Direct Suction Option tabs with the slots on the bottom of the robot. Press until the component clicks into place.



3. Operating and Programming

2 Install the Main Brush Option

- Turn the robot over. Push both yellow buttons below the Direct Suction Option at the same time, and remove Direct Suction Option.
- Insert the Main Brush into the bottom of the robot.
- Line up the Main Brush Cover tabs with the slots on the bottom of the robot. Press until the component clicks into place.



3.6 Voice Reporting (D83 model ONLY)

If D83 has something to report, the robot will announce it with a Voice Report.

Voice Report	Indicates
The current time of day is saved.	The current time of day is saved correctly.
My cleaning time is scheduled.	The cleaning time is scheduled correctly.
My cleaning time is cancelled.	Cleaning time has been cancelled correctly.

If D83 detects a problem, the START/PAUSE button on the robot will flash RED, and the robot will announce the problem with a Voice Report.

Voice Report	Solution
“My Driving Wheel is suspended. Please move me to a flat surface.”	Place the robot on an even surface so it can regain traction.
“My Dust Box is missing or is not installed properly. Please check my Dust Box.”	Install the Dust Bin and ensure it is properly seated.
My Driving Wheels are stuck. Can you please check them?	Check Driving Wheels for debris or tangled hair and clean as described in section 4.
I am stuck. Can you please help me?	The robot is trapped by obstacles on the floor. Move the robot by hand to a different area and/or remove the obstacles.
My Anti-Drop Sensors need cleaning. Can you please help me? My Dust Sensors need cleaning. Can you please help me?	Clean Anti-Drop Sensors or Dust Sensors as described in section 4.
I cannot find the Charging Dock. Can you please help me?	Place the robot on the Charging Dock by hand.
My Main Brush or Side Brushes are stuck. Can you please check them?	Check the Main Brush or Side Brushes for debris or tangled hair and clean as described in section 4.

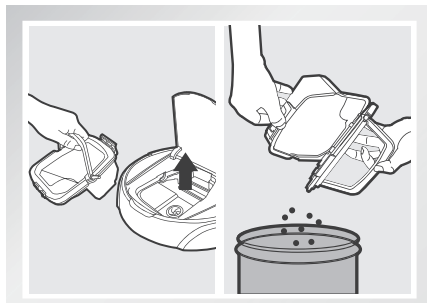
4. Maintenance

Before performing cleaning and maintenance on DEEBOT 8, move the Bottom Power Switch to the “O” position and unplug the Charging Dock.

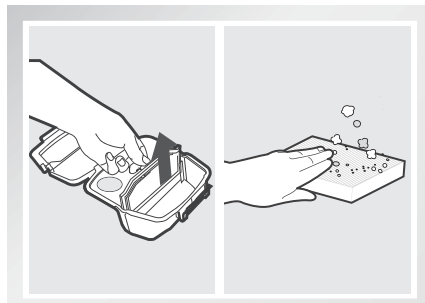
4.1 Dust Bin and Filters

Cleaning the Dust Bin and the Filters

Open DEEBOT 8’s Top Cover and remove the Dust Bin. Open the Dust Bin Cover and empty the Dust Bin.

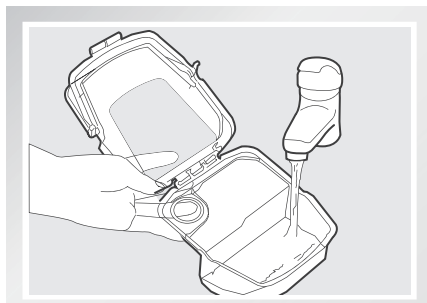


Remove the filters. Pat the High Efficiency Filter clean. Do not rinse the High Efficiency Filter under water.

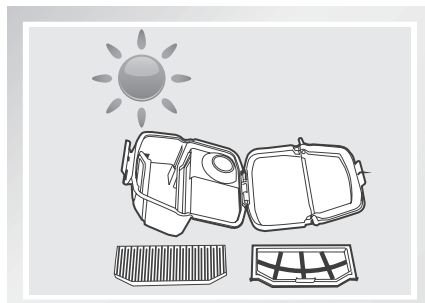


Wash and Dry

Rinse the Dust Bin and Filter Net under running water.



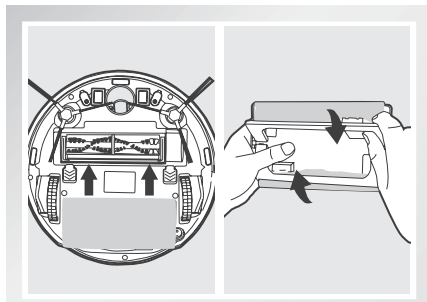
Dry the Dust Bin and Filter Net completely before reinstalling.



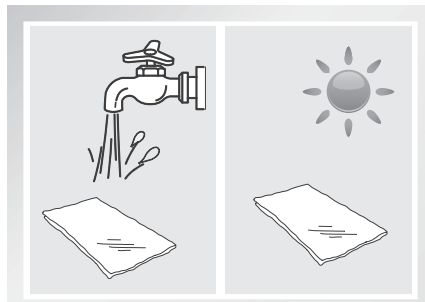
4. Maintenance

4.2 Cleaning Cloth

If the mopping feature was used, remove the Cleaning Cloth Plate from DEEBOT 8 and remove the Cleaning Cloth.



Wash the Washable/Reusable Cleaning Cloth by hand or in the washing machine, and lay flat to dry. Throw Disposable Cleaning Cloths away.



4.3 Main Brush, Direct Suction Option and Side Brushes

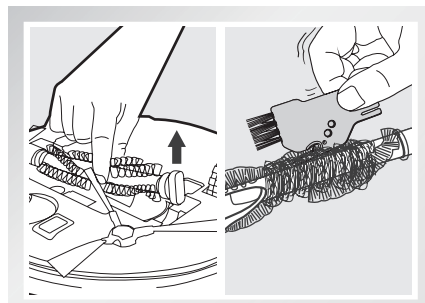
* A Multi-Function Cleaning Tool is provided for easy maintenance. Handle with care, this cleaning tool has sharp edges.

Cleaning the Main Brush

Turn the robot over. Push both yellow buttons below the Main Brush Option at the same time, and remove the Main Brush Cover. Remove the Main Brush. Use the Multi-Function Cleaning Tool to cut off and remove any hair tangled around the Main Brush.

Cleaning the Direct Suction Option (D83 model ONLY)

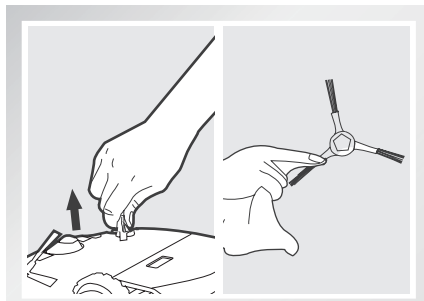
Wipe the Direct Suction Option clean with a dry cloth.



4. Maintenance

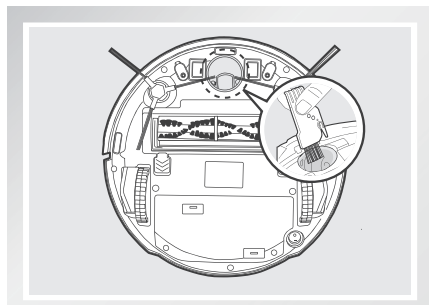
Cleaning the Side Brushes

Remove the Side Brushes. Wipe the Side Brushes and their slots with a dry cloth.

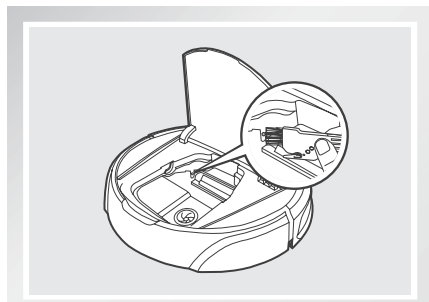


4.4 Other Components

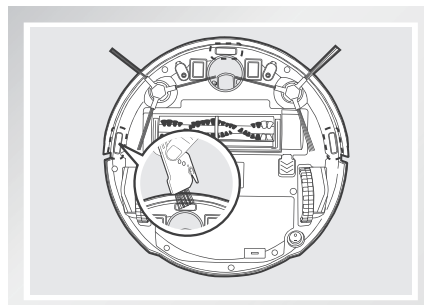
Clean the Universal Wheel by removing any hair tangled around it.



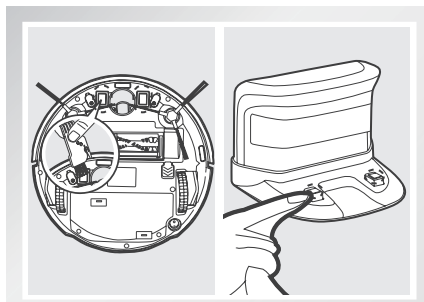
Wipe the Dust Sensors with the brush or the felt side of the Multi-Function Cleaning Tool to maintain their effectiveness.



Wipe the Anti-Drop Sensors with the brush or the felt side of the Multi-Function Cleaning Tool to maintain their effectiveness.



Wipe the Charging Contacts and Charging Dock Pins with the brush or the felt side of the Multi-Function Cleaning Tool to maintain their effectiveness.



5. Troubleshooting

Please use this chart to troubleshoot common problems using DEEBOT 8.

NO.	Malfunction	Possible Causes	Solutions
1	DEEBOT 8 will not charge.	The Bottom Power Switch on the bottom of DEEBOT 8 is not turned ON.	Turn the Bottom Power Switch to the ON position.
		DEEBOT 8 has not made a connection with the Charging Dock.	Be sure that DEEBOT 8 has made a connection with the Charging Dock Pins. You may move the robot manually to make the connection if necessary.
		Charging Dock is unplugged while robot's Bottom Power Switch is ON, which causes battery consumption.	Plug in the Charging Dock and ensure the robot's Bottom Power Switch is turned ON. Keep DEEBOT 8 on the Charging Dock to make sure it has a full battery to work at any time.
		The battery is completely discharged.	Re-activate the battery. Place DEEBOT 8 on the Charging Dock by hand, remove after charging for 3 minutes, repeat 3 times; then charge normally.
2	DEEBOT 8 gets into trouble while working and stops.	DEEBOT 8 is tangled with something on the floor (electrical cords, drooping curtains, carpet fringe etc.).	DEEBOT 8 will try various ways to get itself out of trouble. If it is unsuccessful, manually remove the obstacles and restart.
3	DEEBOT 8 returns to the Charging Dock before it finishes cleaning.	When battery power gets low, DEEBOT 8 automatically switches to Return to Charger Mode and returns to the Charging Dock to recharge itself.	This is normal. No solution necessary.
		Working time varies according to floor surface, room complexity and the selected Cleaning Mode.	This is normal. No solution necessary.

5. Troubleshooting

NO.	Malfunction	Possible Causes	Solutions
4	DEEBOT 8 will not clean automatically at scheduled time.	Time Scheduling function is cancelled.	Set Time Scheduling function as described in section 3.4.
		The Bottom Power Switch on the bottom of the robot is OFF.	Turn the Bottom Power Switch to the ON position.
		The robot's battery is low.	Keep DEEBOT 8 powered ON and on the Charging Dock to make sure it has a full battery to work at any time.
		DEEBOT 8's components are tangled with debris.	Turn DEEBOT 8's Bottom Power Switch OFF, clean the Dust Bin, and invert the robot. Clean the Side Brushes and the Main Brush as described in section 4 Maintenance.
5	Remote Control failure (effective control range of Remote Control is 5m (16')).	The batteries in the Remote Control need to be replaced.	Replace with new batteries making sure they are installed correctly.
		The Bottom Power Switch is turned OFF, or DEEBOT 8's battery is low.	Make sure DEEBOT 8's Bottom Power Switch is ON and fully charged.
		The infrared signal cannot be transmitted because the Infrared Emitter on the Remote Control or DEEBOT 8's Infrared Receiver on DEEBOT 8 is dirty.	Use a dry cloth or the Multi-Function Cleaning Tool to wipe the Infrared Emitter on Remote Control and the Infrared Receiver on DEEBOT 8.
		There is other equipment interfering with the infrared signal to DEEBOT 8.	Avoid using the Remote Control near other equipment using infrared signals.

