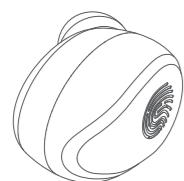


Bluetooth Earbuds User Manual

F9



Customer Support:
FranTech886@gmail.com

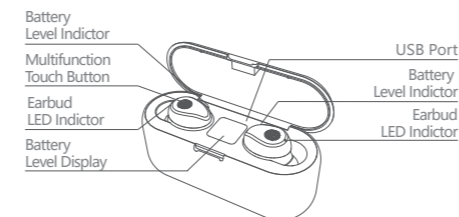
Specification of Earbuds

- ① Product Name: AMOI F9
- ② Bluetooth Version: Version 5.0
- ③ Protocol: Supports HFP 1.7, HSP 1.2, AVRCP 1.6, SPP 1.2 and PBAP 1.0
- ④ Chipset: BT8832A
- ⑤ Working distance: 10M
- ⑥ Call Time: 5-6H (1 time full charged)
- ⑦ Play Music Time: 5-6H (1 time full charged)
- ⑧ Standby time:650H (With charger case)
- ⑨ Frequency:2402MHz~2480MHz
- ⑩ Battery type: 3.7V, >50mA Li Battery
- ⑪ Charging Time: 1-2H
- ⑫ Working Temperature: -10°-55°

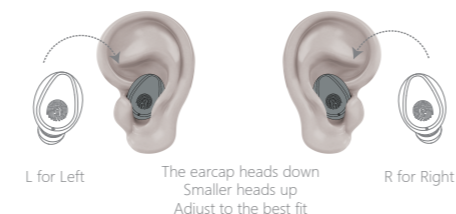
Specification of charger case:

- ① Input current: 5V==1A
- ② Output current: 5V==1A
- ③ Battery type: 3.7V
- ④ Charging time:1-2H

Sketch



Fitting



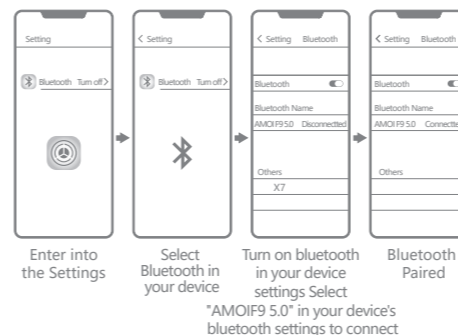
How to operate the earbuds:

- ① Make sure that the charging case has electricity. If the charging compartment is out of power, please fully charge the

charging compartment;(Pick up the two earbuds and put them back on the cover. The charging compartment indicator lights up to indicate that there is power. If it does not light, it means no power.)

- ② Take the two earbuds out of the charging case and wear them on the left and right ears respectively. The earphones will automatically turn on and automatically pair;(Voice prompt: power on, left channel, right channel, waiting for connection).
- ③ Turn on the phone Bluetooth and click on the connection pair name "AMOI F9" to connect (voice prompt "Connected").

How to pairing



Warming remain

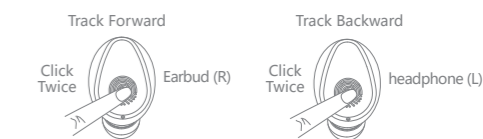
For the first time to use the earbuds or for a long time to no use, please charge the charging case and earphones before, Please keep it in an unobstructed and effective environment within 10 meters. Otherwise, it may be stuck and disconnected.

Indicator description:

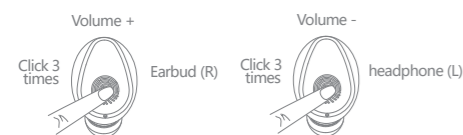
- ① **Charge the earbuds:** Put the earbuds into the charging case and cover it to charge. earbuds indicator: Lights up red when charging, and red light when fully charged. The charging case flashes green and the light is off after charging.
- ② **Charge the charging case:** Plug the 5V/1A USB into the charging port to charge. During charging, the middle digit of the charging stand display indicates the charging case power. When the number is displayed as "100" , the battery is fully charged. **Charging case indicator light:** The charging flashes green light, and the light is off after charging.
- ③ **Charge to the mobile phone;** 3 Charge the mobile phone: Connect USB Cable to USB port of case to charge the mobile phone.ChargingCase indicator light : Light will turn green when charging and turn off when fully charged

How to operate:

Turn on: Press and hold the touch multi-function button for 3 seconds or take it out from the charging case, the earbuds will be turned on automatically
Turn off: Press and hold the touch multi-function button for 5 seconds (Led light turn red and stay) to shut down, or directly put the earbuds back into the charging case, the earbuds automatically turns red and automatically turns off.
Answer and hang up: When phone coming,short press the touch button one time,answer the phone, short press the touch button one time when call end
Reject the phone: Press the touch button for 3s,reject the phone
Start Siri: Long press Right earbud or Left earbud for 1s you will hear "DU" , release andphone voice ontrl is started. Siri supported only
NEXT/PREV Songs: Double click on the Right earbud(R), it plays next song, double click on the L earbud, it plays previous song



Volume +/-: Continuous press right earbud 3 times to turn up the volume; continuous press left earbud 3 times to turn down the volume, or you can adjust the volume on the phone directly.



Single Earbud Mode: When the main earbud (R) and the secondary earbud (L) are not connected, taking out one of any of the earbuds separately from the charging case. The earbud prompts "turn on" , then for 3 seconds, the blue light flashes---the red and blue lights flash alternately, open the mobile phone Bluetooth function, search for the Bluetooth device and Click Connect, the "Bluetooth Connected" will be displayed in the upper right corner of the phone screen, and the earbud will prompt "Connected" , or the manual operation of a single earbud will repeat the above operation.

Remark: Single use

Main earbuds(R) Bluetooth name:AMOI F9
secondary earbud (L) Bluetooth name:AMOI F9 L

Repeated use: the earbuds has been connected with the mobile phone--- open the phone Bluetooth, and take out thetwo earbuds from the charging case, without any operation, it will connect with the phone automatically . If you use a different phone, you need to follow the steps in the instructions for use.

Special Note:The two earbuds are well paired before packaged, but if they can not paired well due to some wrong operations, pls do as following steps to re-pair the earbuds. Power off the two earbuds, then press the button of the two earbuds at same time and do not release for about 10s, blue lights sparkled ----> red and blue lights sparkled alternately ---> release --->two earbuds are in the situation of paired, and they are ready for phone searching.

Note: This operation also clears the team record between the phone and the earbuds, so you need to delete the Bluetooth pairing record before the phone and then search for the connection again.

Care and maintenance:

- ① To avoid any mis-operation caused by collision put the earbud in charging case before put in your pocket
- ② Do not use a abrasive cleaner to clean the Bluetooth earbuds.
- ③ Do not expose the Bluetooth earbuds to excessive temperature.
- ④ Do not expose the earbud under the blazing sun for a long time

- ⑤ Do not let the Bluetooth earbuds be close to the fire source.
- ⑥ Do not drop, bump, scratch, twist, tap, crush, or put into the water.
- ⑦ Keep away from magnets, appliances and speakers when using Bluetooth earbuds.
- ⑧ Do not place the Bluetooth earbuds in extreme temperature (use ambient operating temperature range -10°C-55°C)
- ⑨ Do not expose the Bluetooth earbuds to moisture.
- ⑩ If you do not use the Bluetooth earbuds for a long time, please charge it fully and charge it once a week to extend the life of the Bluetooth earbuds.

Safety guidance:

- ① please use the standard 5V charger (4.9-5.5V)
- ② Do not place the charging case and the Bluetooth earbuds next to the flammable explosives.
- ③ Do not disassemble the charging case and Bluetooth earbuds, or insert other items into the product to avoid damage to the product or even cause harm to you.

Serious warning:

Do not use this product while charging. Please use the adapter specified by the manufacturer to charge the product. Do not disassemble the built-in lithium battery. Do not let the metal contact or short the electrode. Do not touch or squeeze the battery to avoid Place in a humid or hot (>60 ° C) environment.

Commodity warranty card (warranty details)

1. From the date of purchase to the warranty period of three months, if the machine fails, the technician will confirm that the fault is under normal use, and free repair and spare parts replacement service will be provided.
2. The company will refuse to provide warranty service in the following circumstances:
 - a. The product has been mishandled, negligently used or accidentally caused by natural disasters and man-made disasters.
 - b. The product is repaired and modified by non-technical personnel of the company.
 - c. The product body number has been converted, altered or removed.
 - d. The product does not provide installation instructions according to the original factory.
3. Third, the free service provided by this warranty card does not include product accessories, and other decorations and other items.
4. The Company will not be liable for any direct or indirect loss of equipment damage.
5. The contents of this warranty card are subject to change without prior notice.

Warranty Card

Warranty certificate, please fill in and keep it safely

ProductName _____
 Sales date _____
 Shop _____
 After sale service _____

Packing details:

| Item Name | Quantity |
|-------------------|---------------------------|
| Bluetooth earbuds | 2 pcs |
| Charger case | 1 pcs |
| User manual | 1 pcs |
| Certification | 1 pcs |
| Eartips | 3 sizes(Big,Medium,small) |
| Use charger line | 1 pcs |

FAQ and Solutions

| Phenomenon | Failure Reason | Solution |
|--|---|---|
| Can not turn on / Turn off automatically | Low battery | Charge the earbuds for 2-5H |
| No hint after paired | Not paired correctly | Re-paired |
| Can talk but red light is on | Red light is on for lower battery | Charge for the earbuds |
| No lights on when charging | No output from power supply | Check the power supply ifconnected welll |
| Echo | Too large volume or too noisy environmental | Turn down the volume or change the environmental |
| There is noise when talking | Environmental disturbance or too far away from device | Change the environment or move to place near the device |
| Low voice | Not wear earbuds correctly | Adjust the position of earbuds |
| Can not hear the music | The phone doesn' t support | Need a phone support BT stereo |

Brand holder:AMOI science & technology Co.,Ltd
 Address: The 4th Floor, Guanri Road No.22,software park,Xiamen,Fujian
 Manufacturer: Tai Huo Niao Industrial Corporation (Shenzhen) Limited
 Address:Room 201, A building,No.1 Qianwan 1 Road, Qianhai
 Shenzhen Hong Kong cooperation area, Shenzhen,Guangdong
 Service:400-6732-887
 Tel:400-7777-525