

# iSteady*Mobile*+

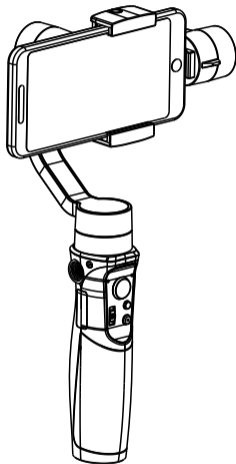
3-Axis Stabilizing Gimbal  
for Smartphone  
User Guide V1.0



@Hohem-Tech

Get more tutorial video

**US Customer Services**  
**Hotline: +1 (888) 9658512**  
**Email: [servicezy@hohem-tech.com](mailto:servicezy@hohem-tech.com)**



**hohem**

## DISCLAIMER

- \*Please use the product in accordance with the user guide.
  - \*Make sure your mobile device is mounted before powering on the gimbal.
  - \*Keep the gimbal away from fire and heat source.
  - \*Prohibiting the product to be used for any illegal purpose. The user who violates the regulation will be responsible for all the consequences by purchasing and using the product.
  - \*Hohem won't provide any service for any user who has product which comes from non-normal resource.
  - \*For any question, please contact the technical support of Hohem Tech. Hohem won't be responsible for any faulty operation.
  - \*Hohem Tech reserves the right of final explanation.
- 

The Hohem logo consists of the word "hohem" in a white, lowercase, sans-serif font, centered within a solid black rounded rectangular background.

Hohem Technology Co., Ltd  
[www.hohem-tech.com](http://www.hohem-tech.com)

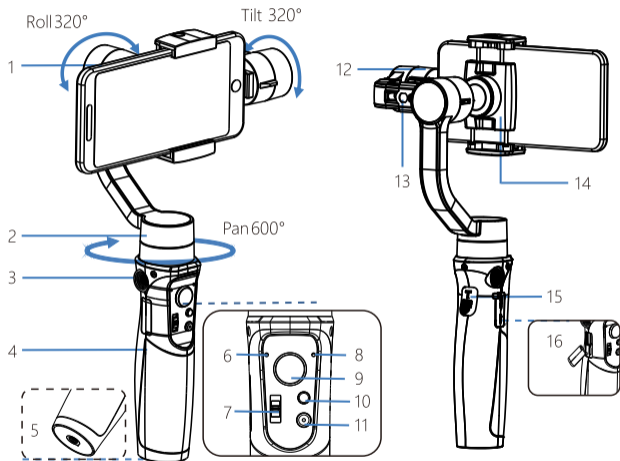
Tel: +86-755-86573216

Email: [service@hohem-tech.com](mailto:service@hohem-tech.com)

Web: [www.hohem-tech.com](http://www.hohem-tech.com)

Addr: B106, University Creative Park, Xili, Nanshan,  
Shenzhen, 518055, P.R. China

# Product Overview



- |                                       |                            |                         |
|---------------------------------------|----------------------------|-------------------------|
| 1.Roll Motor                          | 7.Zoom/Focus Slider        | 13.Balancing Knob       |
| 2.Pan Motor                           | 8.Mode Light               | 14.Rotated Phone Holder |
| 3&5. 1/4 Inch Extension<br>Screw Hole | 9.Joystick                 | 15.Trigger Button       |
| 4.Handle (Battery inside)             | 10.Mode Button             | 16.Charging Port        |
| 6.Bluetooth Light                     | 11.ON/OFF (Shutter button) |                         |
|                                       | 12.Tilt Motor              |                         |

· Accessories List

Mini Tripod*1	USB Cable*1	Carry Case*1	User Manual*1
---------------	-------------	--------------	---------------

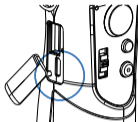
Download APP——Hohem Gimbal



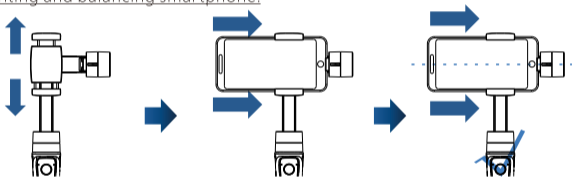
- \* Scan QR code to download the app.
- \* Hohem Gimbal supports iOS 9.0 and Android 4.5 or above.
- \* Search for 'Hohem Gimbal' in the App Store or Google Play and follow the instructions to install the app.

# Quick Start

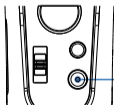
A. Charge the battery.



B. Mounting and balancing smartphone.



C. Power on



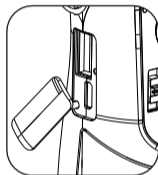
Long press the power button for 3 secs to turn on the gimbal.

## Gimbal Charging & Smartphone Charging

Charge the gimbal fully before using it for the first time.

\* USB Port: Smartphone charging port

\* Micro USB Port: Gimbal charging port



\*Tap the power button to check the battery status

\* Low Battery Warning:  
The Mode Light Blinks

\* Indicator Lights blink: Charging  
4 LED lights on: Fully charged

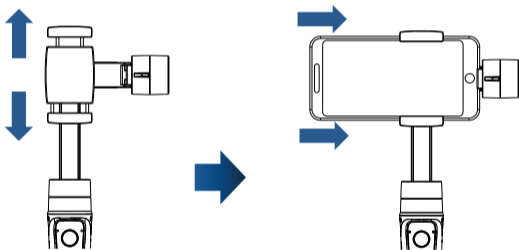


4 LED lights on : 100%  
3 LED lights on: 75%  
2 LED lights on: 50%  
1 LED light on: 25%

## Mounting the Smartphone

\* Do not turn on the gimbal without a smartphone mounted on , it is not recommended to mount the phone with a case.

Push and open the phone holder, insert the smartphone and make the home button side as close as possible against to the tilt motor.



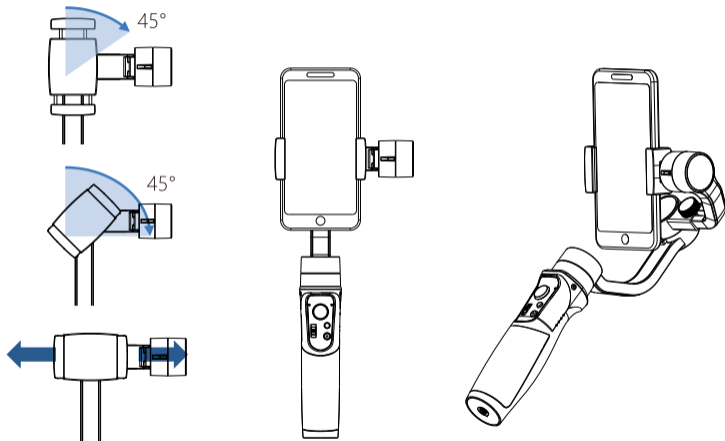
\*Max Payload: 280g

\*Phone Holder supports the width of mobile devices: 58mm~89mm

\*Supported Mobile Devices: iPhone series iPhone XS/XS Max/X/XR/8~5/plus;  
Android major models of Samsung, HUAWEI, Xiaomi, VIVO, OPPO, Sony, Nubia, Meizu, etc.

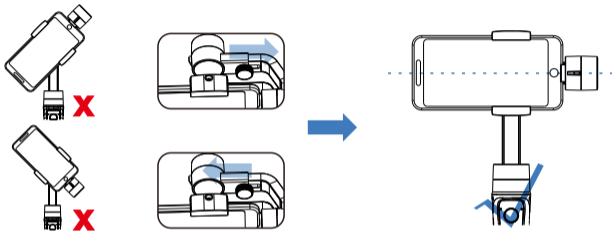
\* Do not turn on the gimbal without a smartphone mounted on , it is not recommended to mount the phone with a case.

Rotate the phone clamp to a way of vertical mounting.

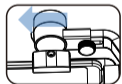


# Balancing the Smartphone

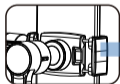
\*To adjust the smartphone balance with balancing knob until it stays still when rotate the roll axis up and down.



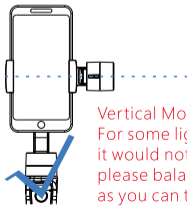
## Vertical Mounting:



1.Adjust the roll arm left and right

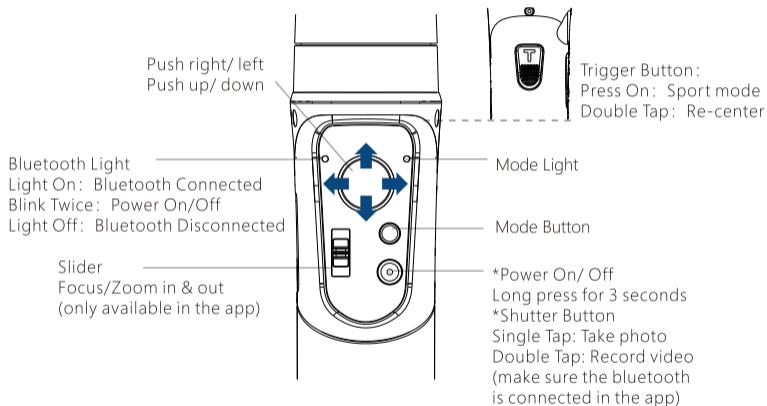




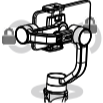


2.Adjust the phone holder left and right



Vertical Mounting:  
For some lightweight mobile phone,  
it would not able to get a perfect balance,  
please balance the phone as possible  
as you can to save the battery.

# Operation Instruction



Mode Button	Working Mode (Model Light)	Schema	Instruction
Single Tap	.PF Pan Following (Flash once, quick flash)		Default mode, tilt & roll axis both locked, camera is able to move to left or right smoothly.
Double Tap	..PTF Pan& Tilt Following (Flash twice)		Roll axis locked, camera is able to move to left/right, and tilt up/down.
Triple Tap	...AL All Locked (Flash triple)		The camera stays in its current orientation.
Quartic Tap	....AF All Following& Inception (Flash once, slow flash )		Tilt axis, roll axis and pan axis all follow.
Long Press for 6 Seconds	Calibration Mode (Light on)		It requires to calibrate the gimbal only when you notice any kind of not level or drift on any of the axes.

# App "Hohem Gimbal" Instruction

## Bluetooth Connection

- A. Enable the Bluetooth on the smartphone.
- B. Open the app, choose the product model and confirm into Bluetooth connection.
- C. Make sure the gimbal Bluetooth light keeps on.

## Main App Functions

- 1.Home
- 2.Setting
- 3.Front/Rear camera
- 4.Flash
- 5.Camera Setting
- 6.Album
- 7.Object Tracking
- 8.Zoom & Focus
- 9.Bluetooth
- 10.Face Tracking
- 11.Shutter Button
- 12.Panorama
- 13.Motion Timelapse



# App "Hohem Gimbal" Instruction

## Other App Functions

### 1. Gimbal Specs Setting:

- A. Following Speed (To adjust the following speed of pan/tilt/roll axes)
- B. Joystick Speed (To adjust the rotating speed by control the joystick)
- C. Following Dead Area (No following movement when the rotate angle is less than dead area setting)
- D. Trim (To adjust the tilt/roll axis in small angle to get a perfect balance)
- E. Joystick Reverse (To reverse the rotation direction by control the joystick)
- F. Motor Torsion (To adjust the motor torsion of pan/tilt/roll axes, which is useful to solve the vibrate issue due to lightweight or overweight mobile phone)

2. Firmware Upgrade: The firmware is subject to upgrade without a fixed schedule. Firmware upgrade is help to optimize the working of gimbal, please refer to page 14 for details.

3. Calibration: It requires to calibrate the gimbal only when you notice any kind of not level or drift on any of the axes, please refer to page 13 for details.

4. Operation Instruction: For any questions, please refer to the user guide for details, the content is subject to change without prior notice.

# Calibration

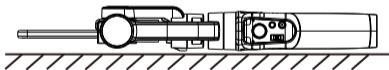
It requires to calibrate the gimbal if you notice it is not work properly as below.

- 1.The pitch angle is not level with the horizontal surface.
- 2.The roll angle is not parallel to the horizontal surface.
3. The pan axis drifts when the gimbal is on all lock mode.

## Calibration Instruction

Method 1: Off-line Calibration

- (1) Power on the gimbal, long press the mode button over 6 seconds till the mode light on.
- (2) Laying the gimbal on a static flat surface without any vibrate. Calibration is completed once the mode light flash twice.



\*if the off-line calibration is not useful, please refer to **【Method 2】**

Method 2: 6-Side Calibration Via App

Please make sure the gimbal is connected with app via bluetooth successfully, then enter "Calibration" and follow the instruction in the app to calibrate the gimbal.

## Firmware Upgrade

Please make sure the gimbal is connected with app via bluetooth successfully, then enter the "Firmware Upgrade" and follow the instruction to upgrade the latest firmware.

## FAQ

Q: Why the gimbal vibrates after powering on?

A: Make sure your smartphone is mounted firmly and well balanced before powering on the gimbal, do not turn on the gimbal without a balanced load, as doing so may damage the motors, please refer to page 6. 7. 8 for more details.

For some lightweight mobile phone, it needs to adjust the motor torsion, please refer to page 12 for details.

Q: How to connect the gimbal via app?

A: Please be noted that the bluetooth and gimbal must be connected directly in the app "Hohem Gimbal", rather than connecting in the smartphone bluetooth list.

Make sure all the permission is allow when you open the app for the first time.

Please refer to the tutorial video on our YouTube channel for more details.

Q: How to do if the gimbal is not level or drift after powering on?

A: Please refer to page 13 for details.

## Parameters

Weight	495g include battery
Main Material	High performance composite
Payload	280g
Mobile Width Supported	58mm~89mm
Supported Mobile Devices	iPhone series iPhone XS/XS Max/X/XR/8~5/plus; Android major models of Samsung, HUAWEI, Xiaomi, VIVO, OPPO, Sony, Nubia, Meizu, ect.
Battery Capacity	3600 mAh
Working Time	12 hours
Charging Time	3.5 hours
Mechanical Range	Panning: 600°
	Rolling: 320°
	Tilting: 320°
Working Temperature	-10~45°C
Motors Protection	Gimbal is able to power off automatically due to improper operation of the motors.
Standard Accessories	Tripod, Carry case, USB cable (for charging gimbal)