



2014
WEBER® PREMIUM PRODUCTS

GRILL ON.

Adventa 



Adventa[®] 



TABLE OF CONTENTS

Q® Electric Grills	2
Q® Gas Grills	6
Spirit® Gas Grills	12
Genesis® Gas Grills	20
Summit® Gas Grills	26
Summit® Grill Centers	34
Portable Grills	42
One-Touch® Charcoal Grills	48
Performer® Charcoal Grills	52
Ranch® Kettle	56
Smokey Mountain Cooker™ Smoker	58
Accessories	62





Q® ELECTRIC GRILLS

Just plug it in, grill it up, and enjoy every minute of it.

Q® ELECTRIC SERIES GRILLS

Q® 1400™ electric grill (top)

Q® 2400™ electric grill (bottom)





Q® ELECTRIC GRILL FEATURES:

Porcelain-Enameled, Cast-Iron Cooking Grates

Heat is conducted evenly across the entire surface of the porcelain-enameled, cast-iron cooking grates.

Heat Retention Liners

Two aluminum heat retention liners keep the heat from escaping and help to provide even cooking temperatures.

6-Foot Grounded Cord

Provides a safe and easy connection to your power source.



Heat Retention Liners

Two aluminum heat retention liners keep the heat from escaping and help to provide even cooking temperatures.



Infinite Heat Control Settings

With infinite heat control settings, the Q® electric grill gets hot enough to sear a steak.



Removable Catch Pan

A removable catch pan makes clean-up easy.

Q® ELECTRIC SERIES GRILLS



Q® 1400™ ELECTRIC GRILL

COOKING SYSTEM

- > Total cooking area = 189 square inches
- > 1560 watts - 120 volts
- > Porcelain-enameled, cast-iron cooking grate
- > Infinite heat control settings

FEATURES

- > Aluminum heat retention liners
- > Removable catch pan
- > 6-foot grounded electrical cord
- > Available lid color: dark gray

DIMENSIONS (with lid open)

- > 23.5" H x 27" W x 20.5" D

MODEL

- > 52020001



Q® 2400™ ELECTRIC GRILL

COOKING SYSTEM

- > Total cooking area = 280 square inches
- > 1560 watts - 120 volts
- > Porcelain-enameled, cast-iron cooking grates
- > Infinite heat control settings

FEATURES

- > Aluminum heat retention liners
- > Removable catch pan
- > 6-foot grounded electrical cord
- > Available lid color: dark gray

DIMENSIONS (with lid open)

- > 26" H x 31.5" W x 25.1" D

MODEL

- > 55020001



ACCESSORIES

sold separately



6525 | Q® Cart

The heavy-duty cart includes integrated tool hooks, a side handle for easy mobility and a screen to discreetly keep the 20-lb tank out of site.



6515 | Q® Two-Piece Stainless Steel Tool Set

Stainless steel construction, perfect portable size. Everything for on-the-go grilling. Includes spatula and tongs.



For further information about these grills, see the specification table in the back of this brochure.



Q® GAS GRILLS

You can now have all the fresh, grilled flavors you love anytime, anywhere.

Q® 3000 SERIES GAS GRILLS

- Q® 3200™ LP gas grill (shown)
- Q® 3200™ NG gas grill



Q® 1000 SERIES GAS GRILLS

- Q® 1000™ gas grill
- Q® 1200™ gas grill (shown)



Q® 2000 SERIES GAS GRILLS

- Q® 2000™ gas grill
- Q® 2200™ gas grill



Q® GAS GRILL FEATURES:

Porcelain-Enameled, Cast-Iron Cooking Grates

Heat is conducted evenly across the entire surface of the porcelain-enameled, cast-iron cooking grates.

Variety

Whether you are cooking for a crowd or enjoying a nice intimate dinner for two—we have the Q® grill just perfect for you.

Removable Catch Pan

A removable catch pan makes clean-up easy.



Convenient Fuel Source

Runs on disposable 14.1 or 16.4 oz. LP cylinders (not included). An optional LP tank adapter hose for 20-lb. tanks is available as an accessory



UPGRADE

Built-In Thermometer*

A built-in thermometer monitors temperature inside the grill.



UPGRADE

Electronic Ignition*

With electronic ignition, lighting your grill is quick, easy, and dependable.

Q® 1000 SERIES GAS GRILLS



Q® 1000™ GAS GRILL

COOKING SYSTEM

- > Total cooking area = 189 square inches
- > Stainless steel burner
- > 8,500 BTU-per-hour input main burner
- > Porcelain-enameled, cast-iron cooking grates
- > Push button ignition

FEATURES

- > Removable catch pan
- > Available lid color: titanium

DIMENSIONS (with lid open)

- > 23.5" H x 27" W x 20.5" D

MODEL

- > 50060001



UPGRADE

Q® 1200™ GAS GRILL

COOKING SYSTEM

- > Total cooking area = 189 square inches
- > Stainless steel burner
- > 8,500 BTU-per-hour input main burner
- > Porcelain-enameled, cast-iron cooking grates
- > Electronic ignition

FEATURES

- > Two folding work tables
- > Built-in thermometer
- > Removable catch pan
- > Available lid color: titanium

DIMENSIONS (with lid open and tables out)

- > 24.6" H x 40.9" W x 20.5" D

MODEL

- > 51060001

Q® 2000 SERIES GAS GRILLS



Q® 2000™ GAS GRILL

COOKING SYSTEM

- > Total cooking area = 280 square inches
- > Stainless steel burner
- > 12,000 BTU-per-hour input main burner
- > Porcelain-enameled, cast-iron cooking grates
- > Push button ignition

FEATURES

- > Two folding work tables
- > Removable catch pan
- > Available lid color: titanium

DIMENSIONS (with lid open and tables out)

- > 26" H x 51.4" W x 24.3" D

MODEL

- > 53060001

UPGRADE

Q® 2200™ GAS GRILL

COOKING SYSTEM

- > Total cooking area = 280 square inches
- > Stainless steel burner
- > 12,000 BTU-per-hour input main burner
- > Porcelain-enameled, cast-iron cooking grates
- > Electronic ignition

FEATURES

- > Two folding work tables
- > Built-in thermometer
- > Removable catch pan
- > Available lid color: titanium

DIMENSIONS (with lid open and tables out)

- > 26" H x 51.4" W x 25.1" D

MODEL

- > 54060001

ACCESSORIES

sold separately



6557 | Q® Portable Cart

Easy push-button functionality provides quick folding for portability with grill attached.



Q® Griddle

Take your breakfast outside with the Q® griddle. Great for pancakes, eggs and even bacon, the non-stick porcelain-enameled coating makes grilling up family favorites a breeze.



For further information about these grills, see the specification table in the back of this brochure.



Two Stainless Steel Burners

Two stainless steel burners deliver maximum heat. Turn off the inner burner for indirect cooking to open up a whole range of grilling possibilities.



Warming Rack

Add an additional cooking space to your grill with the warming rack. Plus the cart has a convenient storage area in the back to keep it out of view when not in use.



Q® Cart

Behind the screen is a tank holder (LP only) and storage area for tools and accessories.

Q® 3200™ GAS GRILL



Q® 3200™ GAS GRILL

COOKING SYSTEM

- > Two stainless steel burners
- > Total cooking area = 468 square inches (primary + warming rack)
- > 21,700 BTU-per-hour input main burners
- > Porcelain-enameled, cast-iron cooking grates
- > Electronic ignition

FEATURES

- > Removable folding work tables
- > Built-in thermometer
- > Warming Rack
- > One Grill Out® handle light
- > Bolts onto heavy-duty cart that includes three integrated tool hooks
- > Tank holder (LP only) and storage area for tools and accessories
- > Removable catch pan
- > Available lid color: titanium

DIMENSIONS (with lid open and tables out)

- > 55.5" H x 50.2" W x 30" D

MODEL #'S

LP: 57060001 | NG: 57067001



ACCESSORIES

sold separately



Q® Premium Cover

Keep your grill out of the elements with a heavy-duty Q® premium cover.



Q® Roasting Rack

Elevate items off the cast-iron for longer roasts. Use in tandem with Q® roasting shields. Available in large and small.





SPIRIT® GAS GRILLS

All the essential features a griller could want in an affordable package.

SPIRIT® 200 SERIES GAS GRILLS

- Spirit® E-210™ gas grill
- Spirit® S-210™ gas grill (shown)
- Spirit® E-220™ gas grill



SPIRIT® 300 SERIES GAS GRILLS

- Spirit® E-310™ gas grill (shown)
- Spirit® E-320™ gas grill
- Spirit® SP-310™ gas grill
- Spirit® SP-320™ gas grill





SPIRIT® GAS GRILL FEATURES:

Porcelain-Enameled, Cast-Iron Cooking Grates

The ease of porcelain-enamel with the superior heat retention of cast iron. Grates require no seasoning and are easy to clean.

Fuel Gauge

Fuel gauge lets you know exactly where you stand on fuel at all times (LP only).

Porcelain-Enameled Flavorizer® Bars

Our unique, angled Flavorizer® bars smoke and sizzle when cooking juices drip down, adding flavor to your meal.



Fold-Down Tables

Two stainless steel tables with integrated tool hooks fold down to allow for easy storage. Available on Spirit® E-210™ and S-210™ gas grills.



Porcelain-Enameled, Cast-Iron Cooking Grates

The ease of porcelain-enamel with the superior heat retention of cast iron. Grates require no seasoning and are easy to clean.



UPGRADE

Side Burner*

Front-mounted control knob provides quick temperature adjustment and more room for larger sauté pans.

SPIRIT® 200 SERIES GAS GRILLS



SPIRIT® E-210™ GAS GRILL

COOKING SYSTEM

- > Total cooking area = 450 square inches (primary + warming rack)
- > Two stainless steel burners
- > 26,500 BTU-per-hour input main burners
- > Porcelain-enameled, cast-iron cooking grates
- > Porcelain-enameled Flavorizer® bars
- > Electronic Crossover® ignition system

FEATURES

- > Porcelain-enameled shroud
- > Center-mounted thermometer
- > Two stainless steel fold-down tables
- > Fuel gauge (LP models only)
- > Available color: black

DIMENSIONS (with lid open)

- > 63" H x 50" W x 32" D

MODEL

LP: 46110001



SPIRIT® S-210™ GAS GRILL

COOKING SYSTEM

- > Total cooking area = 450 square inches (primary + warming rack)
- > Two stainless steel burners
- > 26,500 BTU-per-hour input main burners
- > Porcelain-enameled, cast-iron cooking grates
- > Porcelain-enameled Flavorizer® bars
- > Electronic Crossover® ignition system

FEATURES

- > Stainless steel shroud
- > Center-mounted thermometer
- > Two stainless steel fold-down tables
- > Fuel gauge (LP models only)

DIMENSIONS (with lid open)

- > 63" H x 50" W x 32" D

MODEL #'S

LP: 46110001 | NG: 47100001

ACCESSORIES

sold separately

**7569 | Premium Cover**

Prolong the life of your grill by keeping it covered with the premium cover.

**Porcelain-Enameled, Cast-Iron Griddle**

This handy, two-sided griddle allows you to make pancakes, eggs, and bacon on the smooth side, and use the textured side for delicate fish and veggies.



UPGRADE

SPIRIT® E-220™ GAS GRILL**COOKING SYSTEM**

- > Total cooking area = 450 square inches (primary + warming rack)
- > Two stainless steel burners
- > 26,500 BTU-per-hour input main burners
- > 12,000 BTU-per-hour input, flush-mounted side burner
- > Porcelain-enameled, cast-iron cooking grates
- > Porcelain-enameled Flavorizer® bars
- > Electronic Crossover® ignition system

FEATURES

- > Porcelain-enameled shroud
- > Center-mounted thermometer
- > Stainless steel work surface
- > Fuel gauge (LP models only)
- > Available color: black

DIMENSIONS (with lid open)

- > 63" H x 48" W x 32" D

MODEL #

LP: 46310001

For further information about these grills, see the specification table in the back of this brochure.





Porcelain-Enameled Shroud

No fading, peeling, or rusting with this durable, porcelain-enameled steel shroud. Easy to clean.



Fuel Gauge

Fuel gauge lets you know exactly where you stand on fuel at all times (LP only).



UPGRADE

Side Burner*

Front-mounted control knob provides quick temperature adjustment and more room for larger sauté pans.

SPIRIT® 300 SERIES GAS GRILLS



SPIRIT® E-310™ GAS GRILL

COOKING SYSTEM

- > Total cooking area = 529 square inches (primary + warming rack)
- > Three stainless steel burners
- > 32,000 BTU-per-hour input main burners
- > Porcelain-enameled, cast-iron cooking grates
- > Porcelain-enameled Flavorizer® bars
- > Electronic Crossover® ignition system

FEATURES

- > Porcelain-enameled shroud
- > Center-mounted thermometer
- > Stainless steel work surface
- > Fuel gauge (LP models only)
- > Available color: black

DIMENSIONS (with lid open)

- > 63" H x 52" W x 32" D

MODEL #'S

LP: 46510001 | NG: 47510001



UPGRADE

SPIRIT® E-320™ GAS GRILL

COOKING SYSTEM

- > Total cooking area = 529 square inches (primary + warming rack)
- > Three stainless steel burners
- > 32,000 BTU-per-hour input main burners
- > 12,000 BTU-per-hour input, flush-mounted side burner
- > Porcelain-enameled, cast-iron cooking grates
- > Porcelain-enameled Flavorizer® bars
- > Electronic Crossover® ignition system

FEATURES

- > Porcelain-enameled shroud
- > Center-mounted thermometer
- > Stainless steel work surface
- > Fuel gauge (LP models only)
- > Available color: black

DIMENSIONS (with lid open)

- > 63" H x 52" W x 32" D

MODEL #'S

LP: 46710001



ACCESSORIES

sold separately



6486 | Meatball/Slider Rack

Great for parties, this meatball/slider rack allows you to easily turn everything at once.



8838 | Poultry Roaster

Versatile two-in-one design allows you to make beer can chicken and grill veggies. For use with Gourmet BBQ System™.



For further information about these grills, see the specification table in the back of this brochure.



Stainless Steel Shroud

The stainless steel shroud is durable and will withstand the elements for years to come.



Stainless Steel Cooking Grates

7 mm diameter stainless steel rod cooking grates provide even heat and easy clean-up.



Condiment Rack

Conveniently stows condiments and supplies out of the way while you grill your food.

SPIRIT® SP-300 SERIES GAS GRILLS



SPIRIT® SP-310™ GAS GRILL

COOKING SYSTEM

- > Total cooking area = 529 square inches (primary + warming rack)
- > Three stainless steel burners
- > 32,000 BTU-per-hour input main burners
- > 7 mm diameter stainless steel rod cooking grates
- > Porcelain-enameled Flavorizer® bars
- > Electronic Crossover® ignition system

FEATURES

- > Stainless steel shroud
- > Center-mounted thermometer
- > Stainless steel work surface
- > Side-mounted condiment rack
- > Fuel gauge (LP models only)

DIMENSIONS (with lid open)

- > 63" H x 52" W x 32" D

MODEL #

LP: 46500401



UPGRADE

SPIRIT® SP-320™ GAS GRILL

COOKING SYSTEM

- > Total cooking area = 529 square inches (primary + warming rack)
- > Three stainless steel burners
- > 32,000 BTU-per-hour input main burners
- > 12,000 BTU-per-hour input, flush-mounted side burner
- > 7 mm diameter stainless steel rod cooking grates
- > Porcelain-enameled Flavorizer® bars
- > Electronic Crossover® ignition system

FEATURES

- > Stainless steel shroud
- > Center-mounted thermometer
- > Stainless steel work surface
- > Side-mounted condiment rack
- > Fuel gauge (LP models only)

DIMENSIONS (with lid open)

- > 63" H x 52" W x 32" D

MODEL #'S

LP: 46700401 | NG: 47700401



ACCESSORIES

sold separately



Gas Grill Rotisserie

There's nothing like the taste of rotisserie foods! Rotisserie includes a motor, two spit forks, and shaft.



6471 | Large Stainless Steel Fish Basket

Flexible wire design adjusts to hold a variety of food sizes and shapes. Dishwasher safe.



For further information about these grills, see the specification table in the back of this brochure.



GENESIS® GAS GRILLS

The Genesis® gas grills carry on the tradition of being the first of their kind.

GENESIS® S-SERIES GAS GRILLS

Genesis® S-310™ gas grill

Genesis® S-330™ gas grill (shown)



GENESIS® E-SERIES GAS GRILLS

Genesis® E-310™ gas grill (shown)

Genesis® E-330™ gas grill

GENESIS® EP-SERIES GAS GRILLS

Genesis® EP-310™ gas grill

Genesis® EP-330™ gas grill



GENESIS® GAS GRILL FEATURES:

Grease Management System

The front-access grease tray provides you with easy access to clean and maintain your grill. Disposable drip pans make it simple to keep your catch pan clean after each use.

Flavorizer® Bars

Our unique, angled Flavorizer® bars smoke and sizzle when cooking juices drip down, adding flavor to your meal.

Fuel Gauge

Fuel gauge lets you know exactly where you stand on fuel at all times (LP only).



Porcelain-Enameled, Cast-Iron Cooking Grates*

The ease of porcelain-enamel with the superior heat retention of cast iron. Grates require no seasoning and are easy to clean.



UPGRADE

Sear Station® Burner**

Maximize the heat without minimizing grilling space. This high-powered sear burner is designed to step up the heat on demand for searing.



UPGRADE

Side Burner**

The 12,000 BTU-per-hour input, flush-mounted side burner lets you multitask while grilling.

GENESIS® E-SERIES GAS GRILLS



black

GENESIS® E-310™ GAS GRILL

COOKING SYSTEM

- > Total cooking area = 637 square inches (primary + warming rack)
- > Three stainless steel burners
- > 38,000 BTU-per-hour input main burners
- > Porcelain-enameled, cast-iron cooking grates
- > Porcelain-enameled Flavorizer® bars

FEATURES

- > Porcelain-enameled shroud
- > Center-mounted thermometer
- > Stainless steel work surface
- > Fuel gauge (LP models only)
- > Available LP colors: black, copper, and green
- > Available NG color: black

DIMENSIONS (with lid open)

- > 64.5" H x 60" W x 30" D

MODEL #'s

- black LP: 6511001 | copper LP: 6512001
- black NG: 6611001 | green LP: 6517001



copper

green



black

UPGRADE

GENESIS® E-330™ GAS GRILL

COOKING SYSTEM

- > Total cooking area = 637 square inches (primary + warming rack)
- > Three stainless steel burners
- > 38,000 BTU-per-hour input main burners
- > 12,000 BTU-per-hour input, flush-mounted side burner
- > 10,000 BTU-per-hour input Sear Station® burner
- > Porcelain-enameled, cast-iron cooking grates
- > Porcelain-enameled Flavorizer® bars

FEATURES

- > Porcelain-enameled shroud
- > Center-mounted thermometer
- > Stainless steel work surface
- > Fuel gauge (LP models only)
- > Available LP colors: black, copper, and green
- > Available NG color: black

DIMENSIONS (with lid open)

- > 64.5" H x 60" W x 30" D

MODEL #'s

- black LP: 6531001 | copper LP: 6532001
- black NG: 6631001 | green LP: 6537001

GENESIS® S-SERIES GAS GRILLS



GENESIS® S-310™ GAS GRILL

COOKING SYSTEM

- > Total cooking area = 637 square inches (primary + warming rack)
- > Three stainless steel burners
- > 38,000 BTU-per-hour input main burners
- > 7 mm diameter stainless steel rod cooking grates
- > Stainless steel Flavorizer® bars

FEATURES

- > Stainless steel shroud
- > Center-mounted thermometer
- > Stainless steel work surface
- > Fuel gauge (LP models only)

DIMENSIONS (with lid open)

- > 64.5" H x 60" W x 30" D

MODEL #'s

LP: 6550001 | NG: 6650001

GENESIS® S-330™ GAS GRILL

COOKING SYSTEM

- > Total cooking area = 637 square inches (primary + warming rack)
- > Three stainless steel burners
- > 38,000 BTU-per-hour input main burners
- > 12,000 BTU-per-hour input, flush-mounted side burner
- > 10,000 BTU-per-hour input Sear Station® burner
- > 7 mm diameter stainless steel rod cooking grates
- > Stainless steel Flavorizer® bars

FEATURES

- > Stainless steel shroud
- > Center-mounted thermometer
- > Stainless steel work surface
- > Fuel gauge (LP models only)

DIMENSIONS (with lid open)

- > 64.5" H x 60" W x 30" D

MODEL #'s

LP: 6570001 | NG: 6670001

ACCESSORIES

sold separately



7553 | Premium Cover

Our premium gas grill cover fits snugly with fitted center and long sides.



7566 | Porcelain-Enameled, Cast-Iron Griddle

This handy, two-sided griddle allows you to make pancakes, eggs, and bacon on the smooth side, and use the textured side for delicate fish and veggies.



For further information about these grills, see the specification table in the back of this brochure.



7 mm-Diameter Stainless Steel Rod Cooking Grates

7 mm-diameter stainless steel rod cooking grates provide even heat and easy clean-up.



Stainless Steel Flavorizer® Bars

Our unique, angled Flavorizer® bars smoke and sizzle when cooking juices drip down, adding flavor to your meal.



UPGRADE

Sear Station® Burner*

Maximize the heat without minimizing grilling space. This high-powered sear burner is designed to step up the heat on demand for searing.

GENESIS® EP-SERIES GAS GRILLS



crimson



black

copper

green



smoke

UPGRADE

GENESIS® EP-310™ GAS GRILL

COOKING SYSTEM

- > Total cooking area = 637 square inches (primary + warming rack)
- > Three stainless steel burners
- > 38,000 BTU-per-hour input main burners
- > 7 mm diameter stainless steel rod cooking grates
- > Stainless steel Flavorizer® bars

FEATURES

- > Porcelain-enameled shroud
- > Center-mounted thermometer
- > Stainless steel work surface
- > Fuel gauge (LP models only)
- > Available LP colors: black, copper, crimson, green, and smoke
- > Available NG color: black

DIMENSIONS (with lid open)

- > 64.5" H x 60" W x 30" D

MODEL #'s

- | | | |
|--------------------|--|---------------------|
| black LP: 6511301 | | crimson LP: 6513301 |
| black NG: 6611301 | | green LP: 6517301 |
| copper LP: 6512301 | | smoke LP: 6515301 |

GENESIS® EP-330™ GAS GRILL

COOKING SYSTEM

- > Total cooking area = 637 square inches (primary + warming rack)
- > Three stainless steel burners
- > 38,000 BTU-per-hour input main burners
- > 12,000 BTU-per-hour input, flush-mounted side burner
- > 10,000 BTU-per-hour input Sear Station® burner
- > 7 mm diameter stainless steel rod cooking grates
- > Stainless steel Flavorizer® bars

FEATURES

- > Porcelain-enameled shroud
- > Center-mounted thermometer
- > Stainless steel work surface
- > Fuel gauge (LP models only)
- > Available LP colors: black, copper, crimson, green, and smoke
- > Available NG color: black

DIMENSIONS (with lid open)

- > 64.5" H x 60" W x 30" D

MODEL #'s

- | | | |
|--------------------|--|---------------------|
| black LP: 6531301 | | crimson LP: 6533301 |
| black NG: 6631301 | | green LP: 6537301 |
| copper LP: 6532301 | | smoke LP: 6535301 |



ACCESSORIES

sold separately



8836 | Pizza Stone with Carry Rack

Pizza stone enables you to add a smoky flavor to your favorite homemade pizzas! For use with Gourmet BBQ System™.



7519 | Gas Grill Rotisserie

There's nothing like the taste of rotisserie foods! Rotisserie includes a motor, two spit forks, and shaft. Fits Genesis® 300 series gas grills.



For further information about these grills, see the specification table in the back of this brochure.



SUMMIT® GAS GRILLS

Enjoy the view. Summit® gas grills add plenty more style to your backyard.



SUMMIT® S-SERIES GAS GRILLS

- Summit® S-420™ gas grill
- Summit® S-470™ gas grill
- Summit® S-620™ gas grill (shown)
- Summit® S-670™ gas grill

SUMMIT® E-SERIES GAS GRILLS

- Summit® E-420™ gas grill
- Summit® E-470™ gas grill (shown)
- Summit® E-620™ gas grill
- Summit® E-670™ gas grill



SUMMIT® GAS GRILL FEATURES:

9 mm Diameter Stainless Steel Rod Cooking Grates

9 mm diameter stainless steel rod cooking grates provide even heat and easy clean-up.

Side Burner

The 12,000 BTU-per-hour input, flush-mounted side burner lets you multitask while grilling.

LED Tank Scale Display

An integrated LED tank scale display on the control panel shows the fuel level at the push of a button. (LP models only)



Grill Out® Handle Light(s)

Shed a little light on the subject with the handy LED lights—an integrated tilt sensor automatically turns the lights on when you lift the lid.



UPGRADE

Smoker Burner*

Add smoky flavor to any grilled meal with the integrated smoker burner and stainless steel smoker box.



UPGRADE

Sear Station® Burner*

Maximize the heat without minimizing grilling space. This high-powered sear burner is designed to step up the heat when needed for searing.

SUMMIT® E-SERIES GAS GRILLS



SUMMIT® E-420™ GAS GRILL

COOKING SYSTEM

- > Total cooking area = 650 square inches (primary + warming rack)
- > Four stainless steel burners
- > 48,800 BTU-per-hour input main burners
- > 12,000 BTU-per-hour input, flush-mounted side burner
- > 9 mm diameter stainless steel rod cooking grates
- > Stainless steel Flavorizer® bars

FEATURES

- > Porcelain-enameled shroud
- > Center-mounted thermometer
- > One Grill Out® handle light
- > LED tank scale display and fuel gauge (LP models only)
- > Available color: black

DIMENSIONS (with lid open)

- > 57.1" H x 66" W x 30" D

MODEL #'s

LP: 7121001 | NG: 7221001



UPGRADE

SUMMIT® E-470™ GAS GRILL

COOKING SYSTEM

- > Total cooking area = 580 square inches (primary + warming rack)
- > Four stainless steel burners
- > 48,800 BTU-per-hour input main burners
- > 12,000 BTU-per-hour input, flush-mounted side burner
- > 10,600 BTU-per-hour input Sear Station® burner
- > 6,800 BTU-per-hour input smoker burner and stainless steel smoker box
- > 10,600 BTU-per-hour input, rear-mounted, infrared rotisserie burner
- > Tuck-Away™ rotisserie system with flip-up motor and separate spit and fork storage in the enclosed cart
- > 9 mm diameter stainless steel rod cooking grates
- > Stainless steel Flavorizer® bars

FEATURES

- > Porcelain-enameled shroud
- > Center-mounted thermometer
- > One Grill Out® handle light
- > Lighted control knobs
- > LED tank scale display and fuel gauge (LP models only)
- > Available color: black

DIMENSIONS (with lid open)

- > 57.1" H x 66" W x 30" D

MODEL #'s

LP: 7171001 | NG: 7271001



SUMMIT® E-620™ GAS GRILL

COOKING SYSTEM

- > Total cooking area = 838 square inches (primary + warming rack)
- > Six stainless steel burners
- > 60,000 BTU-per-hour input main burners
- > 12,000 BTU-per-hour input, flush-mounted side burner
- > 9 mm diameter stainless steel rod cooking grates
- > Stainless steel Flavorizer® bars

FEATURES

- > Porcelain-enameled shroud
- > Center-mounted thermometer
- > Two Grill Out® handle lights
- > LED tank scale display and fuel gauge (LP models only)
- > Available color: black

DIMENSIONS (with lid open)

- > 57.1" H x 74.1" W x 30" D

MODEL #'s

LP: 7321001 | NG: 7421001



UPGRADE

SUMMIT® E-670™ GAS GRILL

COOKING SYSTEM

- > Total cooking area = 769 square inches (primary + warming rack)
- > Six stainless steel burners
- > 60,800 BTU-per-hour input main burners
- > 12,000 BTU-per-hour input, flush-mounted side burner
- > 10,600 BTU-per-hour input Sear Station® burner
- > 6,800 BTU-per-hour input smoker burner and stainless steel smoker box
- > 10,600 BTU-per-hour input, rear-mounted, infrared rotisserie burner
- > Tuck-Away™ rotisserie system with flip-up motor and separate spit and fork storage in the enclosed cart
- > 9 mm diameter stainless steel rod cooking grates
- > Stainless steel Flavorizer® bars

FEATURES

- > Porcelain-enameled shroud
- > Center-mounted thermometer
- > Two Grill Out® handle lights
- > Lighted control knobs
- > LED tank scale display and fuel gauge (LP models only)
- > Available color: black

DIMENSIONS (with lid open)

- > 57.1" H x 74.1" W x 30" D

MODEL #'s

LP: 7371001 | NG: 7471001

ACCESSORIES

sold separately



Premium Cover

Our premium gas grill cover fits snugly with fitted center and long sides.



6707 | Stainless Steel Barbecue Tool Set

Ergonomic designs and soft-touch grips provide excellent control. Hands-free locking tongs.



For further information about these grills, see the specification table in the back of this brochure.



Integrated LED Tank Scale

An integrated LED tank scale on the control panel shows the fuel level at the push of a button. (LP models only)



UPGRADE

Tuck-Away™ Rotisserie System*

This unique rotisserie system comes with a flip-up motor for easy rotissing, and a separate spit and fork storage area in the enclosed cart.



UPGRADE

Lighted Control Knobs*

Illuminated by powerful LED lights, the lighted control knobs allow you to precisely control your grill's temperature even in low light conditions.

SUMMIT® S-SERIES GAS GRILLS



SUMMIT® S-420™ GAS GRILL

COOKING SYSTEM

- > Total cooking area = 650 square inches (primary + warming rack)
- > Four stainless steel burners
- > 48,800 BTU-per-hour input main burners
- > 12,000 BTU-per-hour input, flush-mounted side burner
- > 9 mm diameter stainless steel rod cooking grates
- > Stainless steel Flavorizer® bars

FEATURES

- > Stainless steel shroud
- > Center-mounted thermometer
- > One Grill Out® handle light
- > LED tank scale display and fuel gauge (LP models only)

DIMENSIONS (with lid open)

- > 57.1" H x 66" W x 30" D

MODEL #'s

LP: 7120001 | NG: 7220001



UPGRADE

SUMMIT® S-470™ GAS GRILL

COOKING SYSTEM

- > Total cooking area = 580 square inches (primary + warming rack)
- > Four stainless steel burners
- > 48,800 BTU-per-hour input main burners
- > 12,000 BTU-per-hour input, flush-mounted side burner
- > 10,600 BTU-per-hour input Sear Station® burner
- > 6,800 BTU-per-hour input smoker burner and stainless steel smoker box
- > 10,600 BTU-per-hour input, rear-mounted, infrared rotisserie burner
- > Tuck-Away™ rotisserie system with flip-up motor and separate spit and fork storage in the enclosed cart
- > 9 mm diameter stainless steel rod cooking grates
- > Stainless steel Flavorizer® bars

FEATURES

- > Stainless steel shroud
- > Center-mounted thermometer
- > One Grill Out® handle light
- > Lighted control knobs
- > LED tank scale display and fuel gauge (LP models only)

DIMENSIONS (with lid open)

- > 57.1" H x 66" W x 30" D

MODEL #'s

LP: 7170001 | NG: 7270001



SUMMIT® S-620™ GAS GRILL

COOKING SYSTEM

- > Total cooking area = 838 square inches (primary + warming rack)
- > Six stainless steel burners
- > 60,000 BTU-per-hour input main burners
- > 12,000 BTU-per-hour input, flush-mounted side burner
- > 9 mm diameter stainless steel rod cooking grates
- > Stainless steel Flavorizer® bars

FEATURES

- > Stainless steel shroud
- > Center-mounted thermometer
- > Two Grill Out® handle lights
- > LED tank scale display and fuel gauge (LP models only)

DIMENSIONS (with lid open)

- > 57.1" H x 74.1" W x 30" D

MODEL #'s

LP: 7320001 | NG: 7420001



UPGRADE

SUMMIT® S-670™ GAS GRILL

COOKING SYSTEM

- > Total cooking area = 769 square inches (primary + warming rack)
- > Six stainless steel burners
- > 60,800 BTU-per-hour input main burners
- > 12,000 BTU-per-hour input, flush-mounted side burner
- > 10,600 BTU-per-hour input Sear Station® burner
- > 6,800 BTU-per-hour input smoker burner and stainless steel smoker box
- > 10,600 BTU-per-hour input, rear-mounted, infrared rotisserie burner
- > Tuck-Away™ rotisserie system with flip-up motor and separate spit and fork storage in the enclosed cart
- > 9 mm diameter stainless steel rod cooking grates
- > Stainless steel Flavorizer® bars

FEATURES

- > Stainless steel shroud
- > Center-mounted thermometer
- > Two Grill Out® handle lights
- > Lighted control knobs
- > LED tank scale display and fuel gauge (LP models only)

DIMENSIONS (with lid open)

- > 57.1" H x 74.1" W x 30" D

MODEL #'s

LP: 7370001 | NG: 7470001

ACCESSORIES

sold separately



6732 | Grill Pan Set

Set includes one sauté pan and one vegetable pan. Non-stick ceramic-coated interior is easy to clean.



6703 | Stainless Steel Pincers

Finely pointed tips provide precise control for lifting and turning delicate items. Hands-free locking mechanism.



For further information about these grills, see the specification table in the back of this brochure.



Sear Station® Burner

Maximize the heat without minimizing grilling space. This high-powered sear burner is designed to step up the heat when needed for searing.



Infrared Rotisserie Burner

Heavy-duty, rear-mounted, infrared rotisserie burner evenly distributes heat directly towards the spit.



Smoker Burner

Add smoky flavor to any grilled meal with the integrated smoker burner and stainless steel smoker box.

SUMMIT® BUILT-IN SERIES



ISLAND NOT INCLUDED

SUMMIT® S-460™ BUILT-IN GAS GRILL

COOKING SYSTEM

- > Total cooking area = 580 square inches (primary + warming rack)
- > Four stainless steel burners
- > 48,800 BTU-per-hour input main burners
- > 10,600 BTU-per-hour input Sear Station® burner
- > 6,800 BTU-per-hour input smoker burner and stainless steel smoker box
- > 10,600 BTU-per-hour input, rear-mounted, infrared rotisserie burner
- > 9 mm diameter stainless steel rod cooking grates
- > Stainless steel Flavorizer® bars

FEATURES

- > Stainless steel shroud
- > Center-mounted thermometer
- > One Grill Out® handle light
- > Lighted control knobs
- > SlideFrame™ design - the grill slides in and out; two swivel casters and two locking casters
- > Premium cover included

DIMENSIONS (with lid open)

- > 49.5" H x 34" W x 31" D

MODEL #'s

LP: 7160001 | NG: 7260001



ISLAND NOT INCLUDED

SUMMIT® S-660™ BUILT-IN GAS GRILL

COOKING SYSTEM

- > Total cooking area = 769 square inches (primary + warming rack)
- > Six stainless steel burners
- > 60,000 BTU-per-hour input main burners
- > 10,600 BTU-per-hour input Sear Station® burner
- > 6,800 BTU-per-hour input smoker burner and stainless steel smoker box
- > 10,600 BTU-per-hour input, rear-mounted, infrared rotisserie burner
- > 9 mm diameter stainless steel rod cooking grates
- > Stainless steel Flavorizer® bars

FEATURES

- > Stainless steel shroud
- > Center-mounted thermometer
- > Two Grill Out® handle lights
- > Lighted control knobs
- > SlideFrame™ design - the grill slides in and out; two swivel casters and two locking casters
- > Premium cover included

DIMENSIONS (with lid open)

- > 49.5" H x 42" W x 31" D

MODEL #'s

LP: 7360001 | NG: 7460001



ACCESSORIES

sold separately



83003 LP | 83004 NG Dual Side Burner

Two 12,000 BTU-per-hour input burners. Electronic ignition. Flush-mounted stainless steel cover included.



6704 | Stainless Steel Wide Turner

Beveled front edge gently lifts delicate fish filets off grill grates. Angled handle and soft-touch grip provide excellent control.



For further information about these grills, see the specification table in the back of this brochure.



SUMMIT® GRILL CENTERS

The gas grill that sets the bar on performance.





SUMMIT® GRILL CENTER FEATURES:

Dual-Ring Side Burner

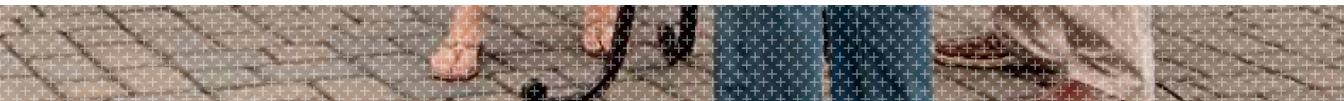
Whether you are simmering a sauce or boiling water, this dual-ring side burner lets you control the heat.

Adjustable Stainless Steel Shelving

The extra storage space allows you to put your favorite items—from the roast holder to the pizza stone—right at the grill so they are always within reach.

Cooking System

This grill has it all—from rotisseries to sear burners to side burner—whatever you can dream up, you can grill up with the Summit® Grill Center.





Dual-Ring Side Burner

Whether you are simmering a sauce or boiling water, this dual-ring side burner lets you control the heat. Turn the inside ring on for a small sauce pan, or fire up the outer ring for a large pot or wok (wok ring included).



Adjustable Stainless Steel Shelving

Each cabinet contains two adjustable, stainless steel shelves, allowing you to put your favorite items—from the roast holder to the pizza stone—right at the grill so they are always within reach.



Sear Station® Burner

Maximize the heat without minimizing grilling space. This high-powered sear burner is designed to step up the heat on demand for searing.

SUMMIT® GRILL CENTER



SUMMIT® GRILL CENTER

COOKING SYSTEM

- > Total cooking area = 769 square inches (primary + warming rack)
- > Six stainless steel burners
- > 60,000 BTU-per-hour input main burners
- > 27,000 BTU-per-hour input, dual ring, flush-mounted side burner
- > 10,600 BTU-per-hour input Sear Station® burner
- > 6,800 BTU-per-hour input smoker burner and stainless steel smoker box
- > 10,600 BTU-per-hour input, rear-mounted, infrared rotisserie burner
- > Tuck-Away™ rotisserie system with flip-up motor and separate spit and fork storage in the enclosed cart
- > 9 mm diameter stainless steel rod cooking grates
- > Stainless steel Flavorizer® bars

DIMENSIONS (with lid open)

- > 59" H x 91.125" W x 28.5" D

FEATURES

- > Available shroud: porcelain-enameled or stainless steel
- > Center-mounted thermometer
- > Two Grill Out® handle lights
- > Lighted control knobs
- > LED tank scale display and fuel gauge (LP models only)
- > Four adjustable stainless steel wire shelves
- > Stainless steel paper towel holder
- > Available color: black

MODELS #'s

- | | | | |
|-----------------|------------|--|------------|
| black | LP: 291101 | | NG: 292101 |
| stainless steel | LP: 291001 | | NG: 292001 |



ACCESSORIES

sold separately



7561 | Premium Cover

Heavy-duty cover protects your grill work surfaces from the elements. Velcro straps secure cover to the grill. Fits Summit® grill center.



7595 | Stainless Steel Trim Kit

Optional stainless steel panels replace painted panels to complete the stainless steel finish on the back of the Summit® grill center.



For further information about these grills, see the specification table in the back of this brochure.



Social Area

We know you love having friends around you at the grill, so we designed a beautiful social center with an extra large stainless steel serving area.



Condiment Rail

A condiment rail along the back helps to keep the counter space free for all of your grilling masterpieces, so you and your grill will always be the center of attention.



Ice Bin and Trash Can

The integrated plastic ice bin with snap-tight lid allows you to serve your guests right where the party is happening. Enclosed trash can with rear access trash removal door (plastic can included).

SUMMIT® GRILL CENTER WITH SOCIAL AREA



left-hand social area



right-hand social area

SUMMIT® GRILL CENTER WITH SOCIAL AREA

COOKING SYSTEM

- > Total cooking area = 769 square inches (primary + warming rack)
- > Six stainless steel burners
- > 60,000 BTU-per-hour input main burners
- > 27,000 BTU-per-hour input, dual ring, flush-mounted side burner
- > 10,600 BTU-per-hour input Sear Station® burner
- > 6,800 BTU-per-hour input smoker burner and stainless steel smoker box
- > 10,600 BTU-per-hour input, rear-mounted, infrared rotisserie burner
- > Tuck-Away™ rotisserie system with flip-up motor and separate spit and fork storage in the enclosed cart
- > 9 mm diameter stainless steel rod cooking grates
- > Stainless steel Flavorizer® bars

OVERALL DIMENSIONS (with lid open)

- > 59" H x 116" W x 72.5" D

FEATURES

- > Porcelain-enameled shroud
- > Center-mounted thermometer
- > Two Grill Out® handle lights
- > Lighted control knobs
- > LED tank scale display and fuel gauge (LP models only)
- > Six adjustable stainless steel wire shelves
- > Stainless steel paper towel holder
- > L-shaped, right-hand or left-hand social area
- > Three extra large stainless steel work surfaces
- > Condiment rail and covered, insulated ice bin
- > Enclosed trash can with rear-access trash removal door (plastic can included)
- > Available color: black

MODEL #'s

- left-hand social area LP: 297101 | NG: 298101
- right-hand social area LP: 293101 | NG: 294101



ACCESSORIES

sold separately



Premium Cover

Premium cover protects your Summit® grill center with social area from the elements.



7577 | Premium Cast-Iron Plancha

Ideal for cooking a wide range of food, including meats, seafood, fruits and vegetables, panini-style sandwiches or eggs and pancakes.



For further information about these grills, see the specification table in the back of this brochure.



Social Area

We know you love having friends around you at the grill, so we designed a beautiful social center with an extra large stainless steel serving area.



Condiment Rail

A condiment rail along the back helps to keep the counter space free for all of your grilling masterpieces, so you and your grill will always be the center of attention.



Ice Bin and Trash Can

The integrated plastic ice bin with snap-tight lid allows you to serve your guests right where the party is happening. Enclosed trash can with rear access trash removal door (plastic can included).

SUMMIT® GRILL CENTER WITH SOCIAL AREA



right-hand social area



left-hand social area

SUMMIT® GRILL CENTER WITH SOCIAL AREA

COOKING SYSTEM

- > Total cooking area = 769 square inches (primary + warming rack)
- > Six stainless steel burners
- > 60,000 BTU-per-hour input main burners
- > 27,000 BTU-per-hour input, dual ring, flush-mounted side burner
- > 10,600 BTU-per-hour input Sear Station® burner
- > 6,800 BTU-per-hour input smoker burner and stainless steel smoker box
- > 10,600 BTU-per-hour input, rear-mounted, infrared rotisserie burner
- > Tuck-Away™ rotisserie system with flip-up motor and separate spit and fork storage in the enclosed cart
- > 9 mm diameter stainless steel rod cooking grates
- > Stainless steel Flavorizer® bars

OVERALL DIMENSIONS (with lid open)

- > 59" H x 116" W x 72.5" D

FEATURES

- > Stainless steel shroud
- > Center-mounted thermometer
- > Two Grill Out® handle lights
- > Lighted control knobs
- > LED tank scale display and fuel gauge (LP models only)
- > Six adjustable stainless steel wire shelves
- > Stainless steel paper towel holder
- > L-shaped, right-hand or left-hand social area
- > Three extra large stainless steel work surfaces
- > Condiment rail and covered, insulated ice bin
- > Enclosed trash can with rear-access trash removal door (plastic can included)

MODEL #'s

- left-hand social area LP: 297001 | NG: 298001
- right-hand social area LP: 293001 | NG: 294001



ACCESSORIES

sold separately



7422 | Wok

Stir-fry your favorite dishes on the porcelain-enameled, cast-iron wok.



6727 | Stainless Steel Barbecue Rack

Versatile rack is designed for grilling aficionados. Support wires can be positioned to hold roasts or up to four racks of ribs.



For further information about these grills, see the specification table in the back of this brochure.



PORTABLE GRILLS

Big fun comes in small sizes.



GO-ANYWHERE® GRILL

Go-Anywhere® charcoal grill
Go-Anywhere® gas grill (shown)

SMOKEY JOE® CHARCOAL GRILL

Smokey Joe® Silver charcoal grill
Smokey Joe® Gold charcoal grill (shown)
Jumbo Joe® charcoal grill



PORTABLE GRILLS:

Smokey Joe® Charcoal Grills

The Smokey Joe® grills pack the same powerful Weber® kettle DNA into a small footprint.

Jumbo Joe® Charcoal Grill

A tailgaters dream come true—the 18.5 inch charcoal grill in a small, portable design. Includes a lid lock which doubles as a lid holder.

Go-Anywhere® Grills

Compact grills perfect for camping, tailgating or wherever adventure leads you. Available in gas or charcoal.



Aluminum Damper

Rust-resistant aluminum damper provides proper airflow for perfect grilling.



Cooking Grate

Plated steel cooking grate provides ample cooking area for all your culinary adventures.



Tuck-N-Carry® Lid Holder*

The Tuck-N-Carry® lid lock allows for carrying, and also lowers to double as a lid holder.

SMOKEY JOE® CHARCOAL GRILLS



SMOKEY JOE® SILVER CHARCOAL GRILL

COOKING SYSTEM

- > Total cooking area = 147 square inches
- > Plated steel cooking grate
- > Rust-resistant aluminum damper

FEATURES

- > Porcelain-enameled bowl and lid
- > One glass-reinforced nylon handle
- > Rust-resistant aluminum ash catcher
- > Available color: black

DIMENSIONS

- > 17" H x 14.25" W x 14.5" D

MODEL

black: 10020



SMOKEY JOE® GOLD CHARCOAL GRILL

COOKING SYSTEM

- > Total cooking area = 147 square inches
- > Plated steel cooking grate
- > Rust-resistant aluminum damper

FEATURES

- > Porcelain-enameled bowl and lid
- > One glass-reinforced nylon handle
- > Tuck-N-Carry® lid lock allows for carrying, also lowers to double as a lid holder
- > Available color: black

DIMENSIONS

- > 17" H x 14.25" W x 16.5" D

MODEL

black: 40020



JUMBO JOE® CHARCOAL GRILL

COOKING SYSTEM

- > Total cooking area = 240 square inches
- > Plated steel cooking grate
- > Rust-resistant aluminum damper

FEATURES

- > Porcelain-enameled bowl and lid
- > One glass-reinforced nylon handle
- > Rust-resistant aluminum ash catcher
- > Tuck-N-Carry® lid lock allows for carrying, also lowers to double as a lid holder
- > Available color: black

DIMENSIONS

- > 19.75" H x 20.5" W x 19.75" D

MODEL

black: 1211001

ACCESSORIES

sold separately



7447 | Compact Rapidfire® Chimney Starter

Smaller version of original Rapidfire® chimney starter. fits perfectly on Smokey Joe® and Jumbo Joe® charcoal grills.



6555 | Smokey Joe® Carry Bag

Durable storage bag comes with a padded, adjustable shoulder strap. Barbecue tool storage pouch included. Fits Smokey Joe® Silver and Smokey Joe® Gold charcoal grills.



Jumbo Joe® charcoal grill and portable table sold separately.

For further information about these grills, see the specification table in the back of this brochure.



Plated Steel Cooking and Charcoal Grate*

The plated steel cooking grate provides ample cooking area for all your culinary adventures. Available on the charcoal grill.



Lid Lock

Plated steel legs pivot to lock lid in place for carrying.



Porcelain-Enameled Cooking Grate*

The cooking grate reduces flare-ups while providing more even heat distribution for a better cooking experience. Available on the gas grill.

GO-ANYWHERE® GRILLS



GO-ANYWHERE® CHARCOAL GRILL

COOKING SYSTEM

- > Total cooking area = 160 square inches
- > Plated steel cooking grate
- > Rust-resistant aluminum dampers

FEATURES

- > Porcelain-enameled base and lid
- > Three glass-reinforced nylon handles
- > Plated steel legs pivot to lock lid in place for carrying
- > Available color: black

DIMENSIONS

- > 14.5" H x 21" W x 12.25" D

MODEL

black: 121020



GO-ANYWHERE® GAS GRILL

COOKING SYSTEM

- > Total cooking area = 160 square inches
- > One stainless steel burner
- > 6,500 BTU-per-hour input main burner
- > Porcelain-enameled cooking grate

FEATURES

- > Porcelain-enameled base and lid
- > Three glass-reinforced nylon handles
- > Plated steel legs pivot to lock lid in place for carrying
- > Available color: black

DIMENSIONS

- > 14.5" H x 21" W x 12.25" D

MODEL

black: 1141001

*Plated steel cooking grate available on the Go-Anywhere® charcoal grill. Porcelain-enameled cooking grate available on the Go-Anywhere® gas grill.

ACCESSORIES

sold separately



7445 | Portable Table

Perfect for tailgaters and campers—goes up in minutes and stores flat! Legs lock in place to keep your grill from moving while in use. Designed to fit Weber® portable grills.



6681 | Stainless Steel Tongs

Textured handle allows for easy gripping and better control of tool. Teeth allow for better gripping of food.



For further information about these grills, see the specification table in the back of this brochure.



ONE-TOUCH® CHARCOAL GRILLS

Our legendary charcoal grills have become a backyard icon.



ONE-TOUCH® SILVER CHARCOAL GRILL

18.5 inch One-Touch® Silver charcoal grill

22.5 inch One-Touch® Silver charcoal grill (shown)

ONE-TOUCH® GOLD CHARCOAL GRILL

22.5 inch One-Touch® Gold charcoal grill (shown)

26.75 inch One-Touch® Gold charcoal grill



ONE-TOUCH® CHARCOAL GRILL FEATURES:

Porcelain-enameled Bowl and Lid

Porcelain enamel won't rust or peel, giving your grill years of top performance and shining good looks.

One-Touch™ Cleaning System

The aluminized steel One-Touch™ cleaning system makes clean-up hassle free.

Aluminum Damper

Rust-resistant damper provides proper airflow for perfect grilling and allows for complete heat control.



Lid Hook

Inside the grill lid is an angled lid hook. Simply slide the lid to the side.



Built-In Thermometer*

A durable, built-in lid thermometer allows you to monitor your grill's temperature.



High-Capacity Ash Catcher*

The enclosed ash catcher keeps ashes from blowing around and is easily detached for quick and clean ash removal.

ONE-TOUCH® CHARCOAL GRILL



ONE-TOUCH® SILVER CHARCOAL GRILL 18.5 INCH

COOKING SYSTEM

- > Total cooking area = 240 square inches
- > Plated steel cooking grate
- > Rust-resistant aluminum damper

FEATURES

- > Porcelain-enameled bowl and lid
- > Angled lid hook inside grill lid
- > Two glass-reinforced nylon handles
- > Aluminized steel, One-Touch™ cleaning system
- > Rust-resistant ash catcher
- > Available color: black

DIMENSIONS

- > 35" H x 23" W x 18.5" D

MODEL

black: 441001



ONE-TOUCH® SILVER CHARCOAL GRILL 22.5 INCH

COOKING SYSTEM

- > Total cooking area = 363 square inches
- > Plated steel cooking grate
- > Rust-resistant aluminum damper

FEATURES

- > Porcelain-enameled bowl and lid
- > Angled lid hook inside grill lid
- > Two glass-reinforced nylon handles
- > Aluminized steel, One-Touch™ cleaning system
- > Rust-resistant ash catcher
- > Available color: black

DIMENSIONS

- > 38.5" H x 25" W x 22.5" D

MODEL

black: 741001

ACCESSORIES

sold separately

**Premium Cover**

Heavy-duty cover protects your Weber® charcoal grill from the elements.

**7416 | Rapidfire® Chimney Starter**

Delivers hot coals in under 20 minutes without using lighter fluid. Place canister with coals on top of Weber® lighter cubes (7417) and light. It's that easy!



copper



crimson



green



ONE-TOUCH® GOLD CHARCOAL GRILL 22.5 INCH

COOKING SYSTEM

- > Total cooking area = 363 square inches
- > Plated steel, hinged cooking grate
- > Rust-resistant aluminum damper

FEATURES

- > Porcelain-enameled bowl and lid
- > Built-in lid thermometer
- > Angled lid hook inside grill lid
- > Two glass-reinforced nylon handles with tool hooks
- > Aluminized steel, One-Touch™ cleaning system
- > Removable, high-capacity, aluminum ash catcher
- > Available colors: black, copper, crimson, and green

DIMENSIONS

- > 38.5" H x 27" W x 22.5" D

MODEL #'S

- black: 1351001
- copper: 1352001
- crimson: 1353001
- green: 1357001

Tuck-away™
Lid Holder

ONE-TOUCH® GOLD CHARCOAL GRILL 26.75 INCH

COOKING SYSTEM

- > Total cooking area = 508 square inches
- > Stainless steel, hinged cooking grate
- > Rust-resistant aluminum damper

FEATURES

- > Porcelain-enameled bowl and lid
- > Built-in lid thermometer
- > Tuck-Away™ lid holder
- > Two glass-reinforced nylon handles with tool hooks
- > Aluminized steel, One-Touch™ cleaning system
- > Removable, high-capacity, aluminum ash catcher
- > Two Char-Basket™ charcoal fuel holders
- > Available color: black

DIMENSIONS

- > 42.3" H x 32" W x 24.4" D

MODEL #

- black: 781001

For further information about these grills, see the specification table in the back of this brochure.





PERFORMER® CHARCOAL GRILLS

Smart in all the right places.



| PERFORMER® SILVER CHARCOAL GRILL



| PERFORMER® PLATINUM CHARCOAL GRILL

| PERFORMER® GOLD CHARCOAL GRILL
(not shown)



PERFORMER® CHARCOAL GRILL FEATURES:

Built-In Thermometer

A durable, built-in lid thermometer allows you to monitor your grill's temperature.

Tuck-Away™ Lid Holder

The Tuck-Away™ lid holder allows you to easily move your lid to the side to check your meal or add charcoal.

Extra Work Space

No more balancing acts while you try to get your food on or off the grill. The Performer® charcoal grill has extra work space for chopping and prepping right at the grill.



Tuck-Away™ Lid Holder

The Tuck-Away™ lid holder allows you to easily move your lid to the side to check your meal or add charcoal.



CharBin™ Storage Container*

Protect your charcoal from the elements and keep it where you use it with the handy CharBin™ storage container.



Removable Cook Timer*

LCD cook timer includes a large readout and can attach to the grill or be easily removed for convenience.

PERFORMER® CHARCOAL GRILLS



fold-down table

PERFORMER® SILVER CHARCOAL GRILL

COOKING SYSTEM

- > Total cooking area = 363 square inches
- > Plated steel, hinged cooking grate
- > Rust-resistant aluminum damper

FEATURES

- > Porcelain-enameled bowl and lid
- > Built-in lid thermometer
- > Tuck-Away™ lid holder
- > Aluminized steel, One-Touch™ cleaning system
- > Removable, high-capacity, aluminum ash catcher
- > Painted, metal fold-down table
- > Available color: black

DIMENSIONS (with table up)

- > 42" H x 39" W x 28.5" D

MODEL

- black: 1401001



copper



green



PERFORMER® GOLD CHARCOAL GRILL

COOKING SYSTEM

- > Total cooking area = 363 square inches
- > Plated steel, hinged cooking grate
- > Rust-resistant aluminum damper

FEATURES

- > Porcelain-enameled bowl and lid
- > Built-in lid thermometer
- > Tuck-Away™ lid holder
- > Aluminized steel, One-Touch™ cleaning system
- > Removable, high-capacity, aluminum ash catcher
- > Thermoset work table
- > Removable LCD cook timer
- > Two Char-Basket™ charcoal fuel holders
- > Weather-protected CharBin™ storage container
- > Available color: black, copper, and green

DIMENSIONS

- > 40" H x 50.25" W x 28.5" D

MODEL #'s

- black: 1431001 | copper: 1432001
- green: 1437001

ACCESSORIES

sold separately

**Premium Cover**

Heavy-duty cover protects Performer® charcoal grills from the elements.

**7420 | Gourmet BBQ System™ Sear Grate set**

Porcelain-enameled, cast-iron sear grate retains heat and delivers professional sear marks every time. Hinged cooking grate with 12 inch w/ insert allows for standard grilling.



copper



crimson



green

**UPGRADE****PERFORMER® PLATINUM CHARCOAL GRILL****COOKING SYSTEM**

- > Total cooking area = 363 square inches
- > Plated steel, hinged cooking grate
- > Rust-resistant aluminum damper
- > Electronic Touch-N-Go™ gas ignition system

FEATURES

- > Porcelain-enameled bowl and lid
- > Built-in lid thermometer
- > Tuck-Away™ lid holder
- > Aluminized steel, One-Touch™ cleaning system
- > Removable, high-capacity, aluminum ash catcher
- > Thermoset work table
- > Removable LCD cook timer
- > Two Char-Basket™ charcoal fuel holders
- > Weather-protected CharBin™ storage container
- > Available color: black, crimson, copper, and green

DIMENSIONS

- > 40" H x 50.25" W x 28.5" D

MODEL #'s

black: 1481001 | copper: 1482001
 crimson: 1483001 | green: 1487001

**Touch-N-Go™ Gas Ignition**

The electronic gas ignition system ignites charcoal briquettes with the push of a button.

For further information about these grills, see the specification table in the back of this brochure.





Aluminum Damper

Rust-resistant dampers provide proper airflow for perfect grilling and allow for complete heat control.



Tuck-Away™ Lid Holder

Convenient Tuck-Away™ lid holder safely keeps the lid off to the side while you flip your food.



Stainless Steel Hinged Cooking Grate

This intuitively designed feature lets you easily add/adjust charcoal without lifting the grate or moving your food.

RANCH® KETTLE



RANCH® KETTLE

COOKING SYSTEM

- > Total cooking area = 1,104 square inches
- > Stainless steel hinged cooking grate
- > Rust-resistant aluminum damper

DIMENSIONS

- > 42" H x 37.75" W x 44.75" D

MODEL

black: 60020

FEATURES

- > Porcelain-enameled bowl and lid
- > Tuck-Away™ lid holder
- > Removable ash catcher
- > Heavy-duty steel cart
- > Two durable all-weather wheels with full wheel hubs
- > Available color: black



ACCESSORIES

sold separately



7471 | Ash Shovel

Ideal for removing ash from the base of your grill and smoker or scooping charcoal right out of the bag.



6670 | Premium Gloves size: L/XL

High-temperature gloves with silicone grip pattern. Set of 2. Also available in S/M (6669).



For further information about these grills, see the specification table in the back of this brochure.



SMOKEY MOUNTAIN COOKER™ SMOKER

For the moistest, juiciest cuts of meat,
sometimes low and slow is the way to go.

SMOKEY MOUNTAIN COOKER™ SMOKER

14.5 inch smoker

18.5 inch smoker

22.5 inch smoker (shown)





SMOKEY MOUNTAIN COOKER™ SMOKER FEATURES:

Built-In Thermometer

A durable, built-in lid thermometer allows you to easily monitor your smoker's temperature.

Temperature Grommet

High-temperature, silicone grommet allows for easy access into the smoker for temperature probes.

Premium Cover Included

Heavy-duty cover protects your smoker from the elements.



Built-In Thermometer

A durable, built-in lid thermometer allows you to easily monitor your smoker's temperature.



Charcoal Chamber

Designed to keep your charcoal in a concentrated area. The charcoal chamber helps keep the charcoal in a uniform shape, helping to control temperature.



Heavy-Duty Cooking Grates

Two plated steel cooking grates provide ample room for smoking ribs and a roast at the same time.

SMOKEY MOUNTAIN COOKER™ SMOKER



SMOKEY MOUNTAIN COOKER™ SMOKER 14.5 INCH

COOKING SYSTEM

- > Total cooking area = 286 square inches
- > Two plated steel cooking grates
- > Four rust-resistant aluminum dampers

FEATURES

- > Porcelain-enameled bowl, lid, and water pan
- > Built-in lid thermometer
- > Temperature grommet
- > Rust-resistant aluminum fuel door
- > Charcoal chamber
- > Premium-grade cover included
- > Available color: black

DIMENSIONS

- > 31.4" H x 14.75" W x 14.75" D

MODEL #

black: 711001



SMOKEY MOUNTAIN COOKER™ SMOKER 18.5 INCH

COOKING SYSTEM

- > Total cooking area = 726 square inches
- > Two plated steel cooking grates
- > Four rust-resistant aluminum dampers

FEATURES

- > Porcelain-enameled bowl, lid, and water pan
- > Built-in lid thermometer
- > Temperature grommet
- > Rust-resistant aluminum fuel door
- > Charcoal chamber
- > Rust-resistant aluminum heat shield
- > Premium-grade cover included
- > Available color: black

DIMENSIONS

- > 41" H x 19" W x 21" D

MODEL #

black: 721001



SMOKEY MOUNTAIN COOKER™ SMOKER 22.5 INCH

COOKING SYSTEM

- > Total cooking area = 726 square inches
- > Two plated steel cooking grates
- > Four rust-resistant aluminum dampers

FEATURES

- > Porcelain-enameled bowl, lid, and water pan
- > Built-in lid thermometer
- > Temperature grommet
- > Rust-resistant aluminum fuel door
- > Charcoal chamber
- > Rust-resistant aluminum heat shield
- > Premium-grade cover included
- > Available color: black

DIMENSIONS

- > 48.5" H x 23" W x 24" D

MODEL

black: 731001

ACCESSORIES

sold separately



6741 | Wireless Thermometer with Two Probes

Programmed for recommended temperature settings, personalized temperature option, and timer function



Expandable Smoking Rack

Cooking flexibility—hang link sausage from bars or whole fish from fish hooks. Rack disassembles for easy clean-up and storage.





WEBER® ACCESSORIES

Essential tools and cookware that you need, so you get the most out of cooking on your Weber® grill.







BARBECUE TOOLS

BARBECUE TOOL SETS



Weber Original™
6515 | 0* Two-Piece
Stainless Steel Tool Set
Includes spatula and tongs



Weber Original™
6645 | Stainless Steel Two-
Piece Portable Tool Set
Includes spatula and tongs



Weber Original™
6625 | Stainless Steel
Two-Piece Barbecue Tool Set
Includes spatula and tongs



Weber Style™
6707 | Stainless Steel
Two-Piece Barbecue Tool Set
Includes spatula and tongs



Weber Essentials™
6682 | Stainless Steel Three-
Piece Barbecue Tool Set
Includes spatula, tongs and fork



Weber Original™
6630 | Stainless Steel Three-
Piece Barbecue Tool Set
Includes spatula, tongs and fork



Weber Essentials™
6680 | Stainless Steel
Spatula



Weber Original™
6620 | Stainless Steel
Spatula



Weber Style™
6705 | Stainless Steel Turner
Spatula



Weber Essentials™
6684 | Stainless Steel
Wide Spatula



Weber Original™
6673 | Stainless Steel
Wide Spatula



Weber Style™
6704 | Stainless Steel
Wide Turner

STAINLESS STEEL SPATULAS

BARBECUE TOOLS

STAINLESS STEEL TONGS



Weber Essentials™
6681 | Stainless Steel Tongs



Weber Original™
6610 | Stainless Steel
Locking Barbecue Tongs



Weber Original™
6650 | Stainless Steel
Sausage Tongs



Weber Original™
6655 | Stainless Steel
Pincer Tongs



Weber Style™
6703 | Stainless Steel
Pincer Tongs

SPECIALTY TOOLS



Weber Essentials™
6685 | Silicone Basting Brush



Weber Original™
6661 | Silicone Basting Brush



Weber Original™
6664 | Basting Mop
Two mop heads included.



Weber Original™
6668 | Basting Mop
Replacement Heads



Weber Style™
6701 | Stainless Steel Basting
Brush



Weber Original™
6468 | Wok Tool Set
Includes spoon and spatula.



Weber Original™
6615 | Stainless Steel Fork



COOKWARE



SKEWERS



Weber Essentials™
6688 | Skewer Set
Set of 4



Weber Original™
6608 | Bamboo Skewers
Set of 25



Weber Original™
6606 | Kabob Set
Includes five skewers and
carrying rack



Weber Style™
6726 | Stainless Steel
Skewer Set
Set of 4



THERMOMETERS



Weber Original™
6492 | Instant-Read
Thermometer



Weber Original™
6491 | Pocket Thermometer



Weber Style™
6742 | Barbecue Thermometer



Weber Style™
6741 | Wireless Thermometer
With Two Probes

6743 | Stainless Steel Thermometer Probe: Replacement probe compatible with Weber Style™ thermometer models 6741 and 6742.



BASKETS AND GRILL PANS



Weber Essentials™
6687 | Stainless Steel
Grill Basket
Round



Weber Original™
6677 | Stainless Steel
Grill Pan
Small



Weber Original™
6678 | Stainless Steel
Grill Pan
Medium



Weber Style™
6732 | Grill Pan Set
Set includes one sauté pan and
one vegetable pan



Weber Style™
6481 | Small Stainless Steel
Vegetable Basket



Weber Style™
6434 | Stainless Steel
Vegetable Basket



Weber Style™
6435 | Stainless Steel
Grill Pan



Weber Style™
6730 | Ceramic Pizza Stone



COOKWARE

RACKS AND ROASTERS



Weber Essentials™
6689 | Collapsible Poultry
Roaster



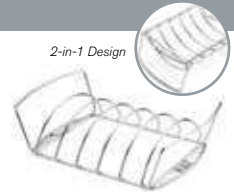
Weber Original™
6482 | Poultry Roaster



Weber Style™
6731 | Poultry Infusion Roaster

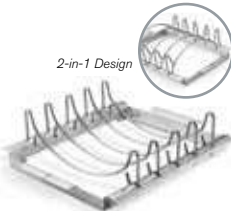


Weber Original™
6607 | Roast Rack



Weber Original™
6469 | Rib and Roast Holder

2-in-1 Design



Weber Style™
6727 | Stainless Steel
Barbecue Rack



Weber Original™
6605 | Rib Rack



Weber Original™
6486 | Meatball/Slider Rack



Weber Original™
6470 | Small Stainless Steel
Fish Basket



Weber Original™
6471 | Large Stainless Steel
Fish Basket

PREP AND SERVE



Weber Original™
6409 | Salt and Pepper
Shakers



Weber Original™
6483 | Burger Press



Weber Original™
6485 | Slider Press



Weber Original™
6479 | Grill Press



Weber Original™
6496 | Mechanical Timer



Weber Original™
7475 | Bear Claw Shredders



Weber Original™
6489 | Corn Picks



Weber Original™
6488 | Potato Nails



COOKWARE



LIGHTING



Weber Original™
6427 | Grill Out® Table Light



Weber Original™
6503 | Grill Out® Handle Light
Q² 100/1000/200/2000 series



Weber Original™
7580 | Grill Out® Handle Light
Q² 300/3000 series



Weber Original™
7516 | Grill Out® Handle Light
Round



GRIDDLES AND PLANCHAS



Weber Original™
6604 | Small Portable Griddle



Weber Original™
6560 | Large Portable Griddle



Weber Original™
6558 | Q² Griddle
Q² 1000 series



Weber Original™
6506 | Q² Griddle
Q² 300/3000 series



Weber Original™
7597 | Porcelain-Enameled
Cast-Iron Griddle
Spirit® 200 series



Weber Original™
7598 | Porcelain-Enameled
Cast-Iron Griddle
Spirit® 300 series



Weber Original™
7566 | Porcelain-Enameled
Cast-Iron Griddle
Genesis® 300 series



Weber Original™
7404 | Porcelain-Enameled
Cast-Iron Griddle
Summit® 400/600 series



Weber Style™
6466 | Plancha



Weber Style™
7579 | Premium Cast-Iron
Plancha
Spirit® 300 series



Weber Style™
7578 | Premium Cast-Iron
Plancha
Genesis® 300 series



Weber Style™
7577 | Premium Cast-Iron
Plancha
Summit® 400/600 series

ELEVATIONS™ TIERED COOKING SYSTEM

ELEVATIONS™ TIERED COOKING SYSTEM



Turn your grill into an outdoor oven with **Elevations™ Tiered Cooking System**, designed specifically for Weber® stand up gas grills (Spirit® 300 series, Genesis®, and Summit®). Perfect for entertaining a crowd, this system gives the consumer even more options for a great grilling experience. The unique, vertical rack allows for easy turning of kabobs, chicken legs and wings, and even a vegetable basket.



Weber Original™
7615 | Grill Rack and Skewer Set
8 skewers



Weber Original™
7616 | Vegetable Basket
With Frame



Weber Original™
7617 | Stainless Steel
Expansion Rack



Weber Original™
7618 | Stainlee Steel Skewer Set
4 skewers





GOURMET BBQ SYSTEM™

GRATE INSETS AND SETS



The **Gourmet BBQ System™** takes grilling to a new level. Unique inserts expand cooking possibilities by delivering professionally seared steaks and chops on the sear grate, delicious breakfast in the griddle, spicy stir-frys and soups in the wok, and even crispy pizzas on the cordierite pizza stone. This system delivers the ultimate experience for grilling fanatics!



Weber Original™
8835 | Hinged Cooking Grate
22.5 inch Weber® charcoal grills



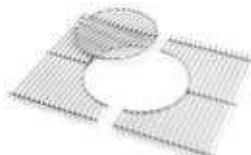
Weber Original™
7420 | Sear Grate Set
22.5 inch Weber® charcoal grills



Weber Original™
8833 | Griddle Grate Set
22.5 inch Weber® charcoal grills



Weber Original™
7586 | Stainless Steel Cooking Grates
Spirit® 300™ series gas grills



Weber Original™
7587 | Stainless Steel Cooking Grates
Genesis® 300™ series gas grills



Weber Original™
7585 | Stainless Steel Cooking Grates
Summit® 400™/600™ series gas grills

GOURMET BBQ SYSTEM™

COOKWARE



Weber Original™
7421 | Griddle



Weber Original™
7422 | Wok



Weber Original™
8834 | Sear Grate



Weber Original™
8836 | Pizza Stone
with Carry Rack



Weber Original™
8841 | Ebelskiver



Weber Original™
8840 | Korean Barbecue



Weber Original™
8838 | Poultry Roaster

DRIP PANS

COOKWARE



Weber® Accessories
6415 | Drip Pans
Small



Weber® Accessories
6416 | Drip Pans
Large



Weber® Accessories
6454 | Drip Pans
X-Large



Weber® Accessories
6417 | Summit® Drip Pans



SMOKING



SMOKING ACCESSORIES



Weber Original™
7472 | Expandable
Smoking Rack
18.5 inch smoker



Weber Original™
7473 | Expandable
Smoking Rack
22.5 inch smoker



Weber Original™
7474 | Fish Hook
Replacement Set



Weber Original™
7576 | Stainless Steel
Smoker Box



FIRESPICE® COOKING WOODS



Weber® Accessories
17901 | Trial Size Kit
1 of each: Hickory, Cherry,
Apple, Beech



Weber® Accessories
17902 | Trial Size Kit
1 of each: Mesquite, Cherry,
Apple, Beech



Weber® Accessories
17903 | Trial Size Kit
1 of each: Hickory, Mesquite,
Cherry, Apple, Beech, Pecan



Weber® Accessories
17302 | Cedar Planks
2 pack



Weber® Accessories
Apple
17004 | Chips
17005 | Chunks
17912 | Smoker Tray



Weber® Accessories
Beech
17905 | Chips
17914 | Smoker Tray



Weber® Accessories
Cherry
17006 | Chips
17007 | Chunks
17911 | Smoker Tray



Weber® Accessories
Hickory
17053 | Chips
17056 | Chunks
17904 | Smoker Tray



Weber® Accessories
Mesquite
17103 | Chips
17106 | Chunks
17910 | Smoker Tray



Weber® Accessories
Pecan
17002 | Chips
17003 | Chunks
17913 | Smoker Tray



CLEAN AND WEAR

Replace brush if any loose bristles are found on cooking grates or brush.

GRILL BRUSHES



Weber® Accessories
6463 | 12 inch Bamboo
Grill Brush



Weber® Accessories
6494 | 12 inch Three-Sided
Grill Brush



Weber® Accessories
6495 | Cast-Iron Grill Brush



Weber® Accessories
6666 | Bamboo Grill Brush
with Replaceable Head



Weber® Accessories
6667 | Bamboo
Replacement Head



Weber® Accessories
6464 | 18 inch Bamboo
Grill Brush



Weber® Accessories
6493 | 21 inch Three-Sided
Grill Brush



Weber® Accessories
6686 | Detailing Grill Brush



Weber Style™
6708 | Stainless Steel Grill
Brush with Replaceable Head



Weber Style™
6709 | Grill Brush
Replacement Heads
2 pack

TEXTILES



Weber® Accessories
6474 | Apron



Weber® Accessories
6476 | Apron



Weber® Accessories
6472 | Barbecue Mitt



Weber® Accessories
Premium Gloves
6669 | S/M
6670 | L/XL



Weber® Accessories
6475 | Apron and Towel Set



Weber® Accessories
6477 | Apron and Towel Set



GRILL ACCESSORIES



CHARCOAL GRILL ACCESSORIES



Weber® Accessories
7402 | Charcoal Rails



Weber® Accessories
7403 | Char-Basket™
Charcoal Fuel Holders



Weber® Accessories
7471 | Ash Shovel



Weber® Accessories
7401 | Tool Holder



Weber® Accessories
7417 | Lighter Cubes



Weber® Accessories
7447 | Compact Rapidfire®
Chimney Starter



Weber® Accessories
7416 | Rapidfire®
Chimney Starter



Weber Original™
7478 | Kettle Tool Hook
Handle



Weber® Accessories
7413 | Work Table*



Weber® Accessories
7445 | Portable Charcoal
Table*



Weber® Accessories
2290 | Kettle Rotisserie

*Charcoal grill not included.

GRILL ACCESSORIES

Q® GRILL ACCESSORIES



Weber® Accessories
6561 | Q® Small Roasting
Shields



Weber® Accessories
6562 | Q® Large Roasting
Shield



Weber® Accessories
6563 | Q® Small Roast Rack



Weber® Accessories
6564 | Q® Large Roast Rack



Weber® Accessories
6501 | Q® Adapter Hose



Weber® Accessories
6557 | Q® Portable Cart
Q® 1000/2000 series



Weber® Accessories
6525 | Q® Cart
Q® 2000 series



Weber® Accessories
6549 | Q® Rolling Cart
Q® 100/200 series

GAS GRILL ACCESSORIES



Weber® Accessories
7614 | Gas Grill Rotisserie
Spirit® 200™/300™ series



Weber® Accessories
7519 | Gas Grill Rotisserie
Genesis® 300™ series



Weber® Accessories
7570 | Gas Grill Rotisserie
Summit® 400™ series



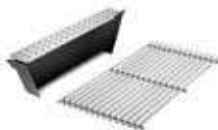
Weber® Accessories
7571 | Gas Grill Rotisserie
Summit® 600™ series



Weber® Accessories
7541 | Gas Grill Smoker with
Stainless Steel Cooking Grate



Weber® Accessories
7575 | Gas Grill Smoker with
Porcelain-Enameled Cast-Iron
Cooking Grate



Weber® Accessories
7563 | Gas Grill Smoker with
Stainless Steel Cooking Grate



COVERS



Q® COVERS



Weber® Accessories
6550 | Q® Grill Cover
Q® 100/1000 series



Weber® Accessories
6551 | Q® Grill Cover
Q® 200/2000 series



Weber® Accessories
6554 | Q® Premium Cover
Fits with Portable Cart (6557) or
Q® Rolling Cart (6549)



Weber® Accessories
6552 | Q® Premium Cover
Fits with Q® Cart (6528) or
Q® Stationary Cart (6508)



Weber® Accessories
6552 | Q® Premium Cover
Q® 300/3000 series

GAS GRILL COVERS



Weber® Accessories
7569 | Premium Cover
Spirit® 200™/300™ series



Weber® Accessories
7552 | Premium Cover
Genesis® Silver C, Gold B, Gold C



Weber® Accessories
7553 | Premium Cover
Genesis® 300™ series



Weber® Accessories
7554 | Premium Cover
Summit® 400™ series



Weber® Accessories
7561 | Premium Cover
Summit® 600™ series



Weber® Accessories
7549 | Premium Cover
Genesis® Island Cabinetry



Weber® Accessories
7561 | Premium Cover
Summit® Grill Center



Weber® Accessories
Premium Cover
7560 Summit® Grill Center (right side)
7568 Summit® Grill Center (left side)

CHARCOAL GRILL COVERS



Weber® Accessories
7450 | Standard Cover
18.5 inch charcoal grill



Weber® Accessories
7451 | Standard Cover
22.5 inch charcoal grill



Weber® Accessories
7452 | Premium Cover
18.5 inch charcoal grill



Weber® Accessories
7453 | Premium Cover
22.5 inch charcoal grill



Weber® Accessories
7574 | Premium Cover
26.75 inch charcoal grill



Weber® Accessories
6555 | Smokey Joe® Bag



Weber® Accessories
7449 | Premium Cover
Performer® Silver



Weber® Accessories
7455 | Premium Cover
Performer® Gold/Platinum



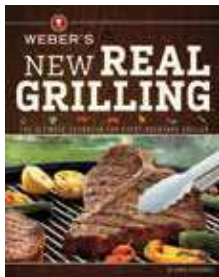
Weber® Accessories
7457 | Premium Cover
One-Touch® Platinum charcoal grill



Weber® Accessories
7454 | Work Table Cover



COOKBOOKS

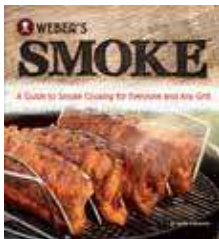


NEW *Weber's New Real Grilling™*

Take Your Grill Skills to a New Level!

Get ready to get inspired! Weber—the world's leading authority in grilling—shares proven techniques and mouthwatering dishes you never imagined would come off the grill. From deep-dish pizza to vegetarian chili and steak stir-fry to bacon-wrapped shrimp, these 200+ delicious recipes will reveal everything your trusty backyard grill is capable of. Packed with fully illustrated step-by-step instructions that ensure you achieve perfect results every time, *Weber's New Real Grilling™* is the most dependable, complete backyard grilling cookbook.

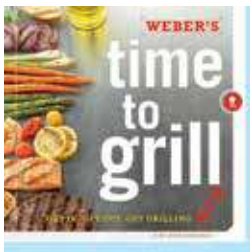
Soft cover; 336 pages | ISBN 13: 978-0-376-02798-6



Weber's Smoke™

Weber's Smoke™ unveils the secrets behind creating rich, smoky flavor on any grill. From classics such as Best-on-the-Block Baby Back Ribs to innovative Homemade Duck and Cherry Sausages, you'll get a taste of everything smoke cooking has to offer. So whether you have 8 short minutes, or 8 laid-back hours, you can achieve mouthwatering results every time.

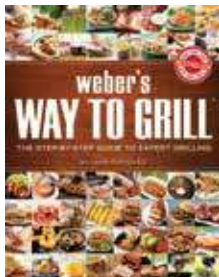
Soft cover; 192 pages | ISBN 13: 978-0-376-02067-3



Weber's Time to Grill™

Weber's Time to Grill™ cookbook meets the challenge of helping grillers who do not have much time to grill with recipes that can be cooked in 30 minutes or less. The book contains more than 200 recipes that go from easy to adventurous, and features over 200 full-color recipe photographs—plus additional photography throughout. It also includes a beginner's grilling course covering Weber's top ten techniques. Free mobile tools at timetogrill.mobi.

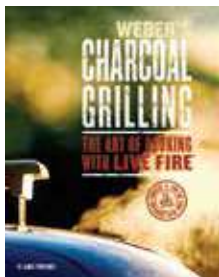
Soft cover; 304 pages | ISBN 13: 978-0-376-02060-4



Weber's Way to Grill™: The Step-by-Step Guide to Expert Grilling

The most complete grilling technique book ever. With over 160 fabulous new recipes and more than 1,100 photographs, you'll find plenty of inspiration and instruction to step it up at the grill. Explore new grilling methods and learn the tips and tricks professional chefs use to create legendary meals. Each chapter includes step-by-step instructions and photography for essential techniques.

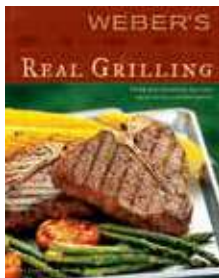
Soft cover; 320 pages | ISBN 13: 978-0-376-02059-8



Weber's Charcoal Grilling: The Art of Cooking with Live Fire™

The inventor of the first covered charcoal grill presents the definitive cookbook on charcoal grilling. The book takes readers through the full range of a charcoal grill's versatility and is laced with "live fire wisdom" collected from chefs, barbecue champions, and charcoal fanatics. If you've ever felt a fascination with live-fire cooking, this is the book for you. A full-color photograph accompanies each of the 115 recipes. Includes a page of note cards.

Soft cover; 256 pages | ISBN 13: 978-0-376-02047-5



Weber's Real Grilling™

With over one million copies sold, this is one of Weber's best cookbooks. It's all about easy, exciting, and absolutely delicious food. You will find many of the ingredients for the 200+ recipes in a well-stocked supermarket, and a full-color photo of each recipe shows you how the food will look. It's the go-to guide for all things grilled.

Soft cover; 304 pages | ISBN 13: 978-0-376-02046-8



	Q® 1400	Q® 2400	Q® 1000	Q® 1200	Q® 2000	Q® 2200	Q® 3200
COOKING SYSTEM							
Stainless steel burner(s)			1	1	1	1	2
Porcelain-enameled, cast-iron cooking grates	•	•	•	•	•	•	•
Main burners: BTU-per-hour input			8,500	8,500	12,000	12,000	21,700
Watts/Volts	1560 / 120	1560 / 120					
Infinite heat control settings	•	•					
Infinite control burner valve(s)			•	•	•	•	•
Push button ignition system			•		•		
Electronic ignition system				•		•	•
COOKING AREA							
Primary cooking area (square inches)							393
Warming rack area (square inches)							75
Total cooking area (square inches)	189	280	189	189	280	280	468
CONSTRUCTION							
Cast aluminum lid and body	•	•	•	•	•	•	•
Glass-reinforced nylon frame	•	•	•	•	•	•	•
Two folding work tables				•	•	•	
Two removable folding work tables							•
Removable catch pan	•	•	•	•	•	•	•
Built-in lid thermometer				•		•	
Aluminum heat retention liner	•	•					
O® cart							•
FEATURES							
Grill Out® handle light							1
Owner's guide and grilling guide	•	•	•	•	•	•	•
Limited warranty	•	•	•	•	•	•	•
FUEL							
14.1 or 16.4 oz. LP cylinder (sold separately)			•	•	•	•	
Liquid propane (20 lb LP tank sold separately)							•
Hose and regulator for 20-lb LP tank							•
Natural gas (10-foot flexible hose included)							•
6-foot grounded electrical cord	•	•					
COLOR / MODEL #							
Painted, cast aluminum lid finish	•	•	•	•	•	•	•
Titanium (LP)			50060001	51060001	53060001	54060001	57060001
Titanium (NG)							57067001
Dark gray	52020001	55020001					
DIMENSIONS (lid open, tables out)							
Height (inches)	23.5	26	23.5	24.6	26	26	55.5
Width (inches)	27	31.5	27	40.9	51.4	51.4	50.2
Depth (inches)	20.5	25.1	20.5	20.5	24.3	25.1	30

SPiRiT®



	E-210™	E-220™	S-210™	E-310™	E-320™	SP-310™	SP-320™
COOKING SYSTEM							
Stainless steel burners	2	2	2	3	3	3	3
Porcelain-enameled, cast-iron cooking grates	•	•	•	•	•		
7 mm diameter stainless steel rod cooking grates						•	•
Porcelain-enameled Flavorizer® bars	•	•	•	•	•	•	•
Main burners: BTU-per-hour input	26,500	26,500	26,500	32,000	32,000	32,000	32,000
Side burner: BTU-per-hour input		12,000			12,000		12,000
Electronic Crossover® ignition system	•	•	•	•	•	•	•
COOKING AREA							
Primary cooking area (square inches)	360	360	360	424	424	424	424
Warming rack area (square inches)	90	90	90	105	105	105	105
Total cooking area (square inches)	450	450	450	529	529	529	529
CONSTRUCTION							
Porcelain-enameled shroud with center-mounted thermometer	•	•		•	•		
Stainless steel shroud with center-mounted thermometer			•			•	•
Stainless steel fold-down tables	2		2				
Stainless steel work surfaces	2	2	2	2	2	2	2
Front-mounted control panel	•	•	•	•	•	•	•
Painted enclosed steel cabinet with painted steel door	•	•		•	•		
Painted enclosed steel cabinet with stainless steel door			•			•	•
Side-mounted condiment rack						•	•
Front access, porcelain-enameled grease tray with catch pan	•	•	•	•	•	•	•
Heavy-duty front locking swivel casters	2	2	2	2	2	2	2
Heavy-duty back swivel casters	2	2	2	2	2	2	2
FEATURES							
Fuel gauge (LP models only)	•	•	•	•	•	•	•
Tool hooks	6	6	6	6	6	6	6
Owner's guide and grilling guide	•	•	•	•	•	•	•
Limited warranty	•	•	•	•	•	•	•
FUEL							
Natural gas (10-foot flexible hose included)			•	•			•
Liquid propane (20-lb LP tank sold separately)	•	•	•	•	•	•	•
COLOR / MODEL #							
Black (LP)	46110001	46310001		46510001	46710001		
Black (NG)				47510001			
Stainless steel (LP)			46100001			46500401	46700401
Stainless steel (NG)			47100001				47700401
DIMENSIONS (lid open, tables out)							
Height (inches)	63	63	63	63	63	63	63
Width (inches)	50	48	50	52	52	52	52
Depth (inches)	32	32	32	32	32	32	32

GENESIS®



	E-310™	E-330™	EP-310™	EP-330™	S-310™	S-330™
COOKING SYSTEM						
Stainless steel burners	3	3	3	3	3	3
Porcelain-enameled, cast-iron cooking grates	•	•				
7 mm diameter stainless steel rod cooking grates			•	•	•	•
Porcelain-enameled Flavorizer® bars	•	•				
Stainless steel Flavorizer® bars			•	•	•	•
Main burners: BTU-per-hour input	38,000	38,000	38,000	38,000	38,000	38,000
Side burner: BTU-per-hour input		12,000		12,000		12,000
Sear Station® burner: BTU-per-hour input		10,000		10,000		10,000
Individual electronic ignition system	•	•	•	•	•	•
COOKING AREA						
Primary cooking area (square inches)	507	507	507	507	507	507
Warming rack area (square inches)	130	130	130	130	130	130
Total cooking area (square inches)	637	637	637	637	637	637
CONSTRUCTION						
Porcelain-enameled shroud with center-mounted thermometer	•	•	•	•		
Stainless steel shroud with center-mounted thermometer					•	•
Stainless steel work surfaces	2	2	2	2	2	2
Front-mounted control panel	•	•	•	•	•	•
Painted enclosed steel cabinet with painted steel doors and stainless steel handles	•	•	•	•		
Painted enclosed steel cabinet with stainless steel doors and stainless steel handles					•	•
Front access, porcelain-enameled grease tray with catch pan	•	•	•	•	•	•
Porcelain-enameled heat deflectors	•	•	•	•	•	•
Heavy-duty front locking swivel casters	2	2	2	2	2	2
Heavy-duty back swivel casters	2	2	2	2	2	2
FEATURES						
Fuel gauge (LP models only)	•	•	•	•	•	•
Tool hooks	6	6	6	6	6	6
Owner's guide and grilling guide	•	•	•	•	•	•
Limited warranty	•	•	•	•	•	•
FUEL						
Natural gas (10-foot flexible hose included)	•	•	•	•	•	•
Liquid propane (20-lb LP tank sold separately)	•	•	•	•	•	•
COLOR / MODEL #						
Black (LP)	6511001	6531001	6511301	6531301		
Black (NG)	6611001	6631001	6611301	6631301		
Copper (LP)	6512001	6532001	6512301	6532301		
Green (LP)	6517001	6537001	6517301	6537301		
Crimson (LP)			6513301	6533301		
Smoke (LP)			6515301	6535301		
Stainless steel (LP)					6550001	6570001
Stainless steel (NG)					6650001	6670001
DIMENSIONS (lid open)						
Height (inches)	64.5	64.5	64.5	64.5	64.5	64.5
Width (inches)	60	60	60	60	60	60
Depth (inches)	30	30	30	30	30	30

SUMMIT® BUILT-IN GAS GRILLS



	S-460™	S-660™
COOKING SYSTEM		
Stainless steel burners	4	6
9 mm diameter stainless steel rod cooking grates	•	•
Stainless steel Flavorizer® bars	•	•
Main burners: BTU-per-hour input	48,800	60,000
Sear Station® burner: BTU-per-hour input	10,600	10,600
Smoker burner: BTU-per-hour input	6,800	6,800
Rear-mounted infrared rotisserie burner: BTU-per-hour input	10,600	10,600
Snap-Jet™ individual burner ignition system	•	•
COOKING AREA		
Primary cooking area (square inches)	468	624
Warming rack area (square inches)	112	145
Total cooking area (square inches)	580	769
CONSTRUCTION		
Stainless steel shroud with center-mounted thermometer	•	•
Painted enclosed storage area with stainless steel doors and chrome-plated aluminum handles	•	•
Front access, stainless steel grease tray with catch pan	•	•
SlideFrame™ design	•	•
Two swivel casters and two locking casters with stainless steel trim included	•	•
Cabinet for LP tank must be built separately (island not included)	•	•
FEATURES		
Premium cover included	•	•
Grill Out® handle light(s)	1	2
Lighted control knobs	•	•
Owner's guide and grilling guide	•	•
Limited warranty	•	•
FUEL		
Natural gas (10-foot flexible hose included)	•	•
Liquid propane (20-lb LP tank sold separately)	•	•
COLOR / MODEL #		
Stainless steel (LP)	7160001	7360001
Stainless steel (NG)	7260001	7460001
DIMENSIONS (lid open)		
Height (inches)	49.5	49.5
Width (inches)	34	42
Depth (inches)	31	31

SUMMIT® GRILL CENTERS



			Right-Hand Social Area	Left-Hand Social Area	Right-Hand Social Area	Left-Hand Social Area
COOKING SYSTEM						
Stainless steel burners	6	6	6	6	6	6
9 mm diameter stainless steel rod cooking grates	•	•	•	•	•	•
Stainless steel Flavorizer® bars	•	•	•	•	•	•
Main burners: BTU-per-hour input	60,000	60,000	60,000	60,000	60,000	60,000
Side burner: BTU-per-hour input	27,000	27,000	27,000	27,000	27,000	27,000
Sear Station® burner: BTU-per-hour input	10,600	10,600	10,600	10,600	10,600	10,600
Smoker burner: BTU-per-hour input	6,800	6,800	6,800	6,800	6,800	6,800
Rear-mounted infrared rotisserie burner: BTU-per-hour input	10,600	10,600	10,600	10,600	10,600	10,600
Tuck-Away™ rotisserie system with flip-up motor and separate spit and fork storage in the enclosed cart	•	•	•	•	•	•
Snap-Jet™ individual burner ignition system	•	•	•	•	•	•
COOKING AREA						
Primary cooking area (square inches)	624	624	624	624	624	624
Warming rack area (square inches)	145	145	145	145	145	145
Total cooking area (square inches)	769	769	769	769	769	769
CONSTRUCTION						
Porcelain-enameled shroud with center-mounted thermometer	•	•	•	•	•	•
Stainless steel shroud with center-mounted thermometer	•	•	•	•	•	•
Stainless steel work surfaces with cast aluminum end caps	2	2	3	3	3	3
Painted enclosed cart with painted steel doors and chrome-plated aluminum handles	•	•	•	•	•	•
Painted enclosed cart with stainless steel doors and chrome-plated aluminum handles	•	•	•	•	•	•
Front access, stainless steel grease tray with catch pan	•	•	•	•	•	•
Adjustable stainless steel legs	8	8	12	12	12	12
Enclosed storage areas	2	2	4	4	4	4
Heavy-duty front locking swivel casters	2	2	2	2	2	2
Heavy-duty back swivel casters	2	2	2	2	2	2
FEATURES						
LED tank scale display and fuel gauge (LP models only)	•	•	•	•	•	•
Grill Out® handle light(s)	1	1	1	1	2	2
Lighted control knobs	•	•	•	•	•	•
Tool hooks	6	6	6	6	6	6
Adjustable stainless steel wire shelves	4	4	6	6	6	6
Stainless steel paper towel holder	•	•	•	•	•	•
L-shaped social area featuring condiment rail and covered insulated ice bin			right side	left side	right side	left side
Enclosed trash can with rear-access trash removal door (plastic can included)	•	•	•	•	•	•
Owner's guide and grilling guide	•	•	•	•	•	•
Limited warranty	•	•	•	•	•	•
FUEL						
Natural gas (10-foot flexible hose included)	•	•	•	•	•	•
Liquid propane (20-lb LP tank sold separately)	•	•	•	•	•	•
COLOR / MODEL #						
Black (LP)	291101		293101	297101		
Black (NG)	292101		294101	298101		
Stainless steel (LP)		291001			293001	297001
Stainless steel (NG)		292001			294001	298001
DIMENSIONS (lid open)						
Height (inches)	59	59	59	59	59	59
Width (inches)	91.1	91.1	116	116	116	116
Depth (inches)	28.5	28.5	72.5	72.5	72.5	72.5

PORTABLE GRILLS



	SMOKEY JOE®			GO-ANYWHERE®	
	Silver	Gold	Jumbo Joe®	Charcoal	Gas
COOKING SYSTEM					
Porcelain-enameled bowl and lid	•	•	•	•	•
Plated steel cooking grate	•	•	•	•	
Porcelain-enameled, cooking grate					•
Steel charcoal grate	•	•	•	•	
Stainless steel burner					1
Main burner: BTU-per-hour input					6,800
Push button igniter					•
COOKING AREA					
Total cooking area (square inches)	147	147	240	160	160
CONSTRUCTION					
Rust-resistant damper(s)	2	1	2	2	
Glass-reinforced nylon handle	1	1	1	1	1
Tuck-N-Carry® lid lock/lid holder		•	•		
Plated steel legs pivot to lock lid in place for carrying				•	•
FEATURES					
Owner's guide	•	•	•	•	•
Limited warranty	•	•	•	•	•
Uses disposable 14.1 oz. LP cylinders (not included)					•
COLOR / MODEL #					
Black	10020	40020	1211001	121020	1141001
DIMENSIONS					
Height (inches)	17	17	19.75	14.5	14.5
Width (inches)	14.25	14.25	20.5	21	21
Depth (inches)	14.5	16.5	19.75	12.25	12.25



CHARCOAL GRILLS

	ONE-TOUCH® CHARCOAL GRILL				PERFORMER® CHARCOAL GRILL			RANCH® KETTLE
	18.5" SILVER	22.5" SILVER	22.5" GOLD	26.75" GOLD	SILVER	GOLD	PLATINUM	
COOKING SYSTEM								
Porcelain-enameled bowl and lid	•	•	•	•	•	•	•	•
Plated steel cooking grate	•	•						
Plated steel hinged cooking grate			•		•	•	•	
Stainless steel hinged cooking grate				•				•
Steel charcoal grate	•	•	•	•	•	•	•	•
Electronic Touch-N-Go™ gas ignition system							•	
COOKING AREA								
Total cooking area (square inches)	240	363	363	508	363	363	363	1,104
CONSTRUCTION								
Heavy-duty steel cart frame					•	•	•	•
Fold-down table					•			
Thermoset work table						•	•	
One-Touch™ cleaning system	•	•	•	•	•	•	•	
Aluminum ash catcher	•	•						•
Removable, high-capacity aluminum ash catcher			•	•	•	•	•	
Wire bottom shelf					•	•	•	
Weather-protected CharBin™ storage container						•	•	
Rust-resistant damper(s)	1	1	1	1	1	1	1	4
Glass-reinforced nylon lid handle	1	1	1	1	1	1	1	2
Glass-reinforced nylon bowl handle	1	1						
Glass-reinforced nylon handle with tool hooks			2	1				
Durable all-weather wheels	2	2	2					
Durable all-weather wheels with full wheel hubs				2	2	2	2	2
Locking casters					2	2	2	2
FEATURES								
Built-in lid thermometer			•	•	•	•	•	
Removable LCD cook timer						•	•	
Char-Basket™ charcoal fuel holders				2		2	2	
Tool hooks					3	3	3	3
Tuck-Away™ lid holder				•	•	•	•	•
Owner's guide	•	•	•	•	•	•	•	•
Limited warranty	•	•	•	•	•	•	•	•
COLOR / MODEL #								
Black	441001	741001	1351001	781001	1401001	1431001	1481001	60020
Copper			1352001			1432001	1482001	
Crimson							1483001	
Green			1357001			1437001	1487001	
DIMENSIONS								
Height (inches)	35	38.5	38.5	42.3	42	40	40	42
Width (inches)	23	25	27	32	39	50.25	50.25	37.75
Depth (inches)	18.5	22.5	22.5	24.4	28.5	28.5	28.5	44.75





SMOKEY MOUNTAIN COOKER™ SMOKER

	14.5" SMOKER	18.5" SMOKER	22.5" SMOKER
COOKING SYSTEM			
Porcelain-enameled bowl and lid	*	*	*
Porcelain-enameled water pan	*	*	*
Charcoal chamber	*	*	*
Plated steel cooking grate	*	*	*
COOKING AREA			
Total cooking area (square inches)	286	481	726
CONSTRUCTION			
Rust-resistant damper(s)	4	4	4
Glass-reinforced nylon lid handle	*	*	*
Rust-resistant aluminum fuel door	*	*	*
Rust-resistant aluminum heat shield	*	*	*
FEATURES			
Built-in lid thermometer	*	*	*
Silicone temperature grommet	*	*	*
Premium-grade cover included	*	*	*
Owner's guide	*	*	*
Limited warranty	*	*	*
COLOR / MODEL #			
Black	711001	721001	731001
DIMENSIONS			
Height (inches)	31.4	41	48.5
Width (inches)	14.75	19	23
Depth (inches)	14.75	21	24

Customer Service: 1-800-446-1071

Designed and Engineered by Weber in Palatine, Illinois, USA

©2013 Weber-Stephen Products LLC. Weber, the kettle configuration, , Q, , Spirit, Genesis, Summit, One-Touch, Performer, Ranch, www.weber.com, Grill Out, Flavorizer, Crossover, Sear Station, Grill Out, Go-Anywhere, Smokey Joe, Jumbo Joe, Tuck-N-Carry and Rapidfire are registered U.S. trademarks; Smokey Mountain Cooker, Grill On, Q1000, Q1200, Q1400, Q2000, Q2200, Q2400, Q3200, E-210, E-220, E-310, E-320, E-330, E-420, E-470, E-620, E-670, EP-310, EP-330, S-210, S-310, S-330, S-420, S-460, S-470, S-620, S-660, S-670, SP-310, SP-320, Gourmet BBQ System, Tuck-Away, SlideFrame, One-Touch Cleaning System, Char-Basket, CharBin, Weber Essentials, Weber Original, Weber Style, Elevations Tiered Cooking System logo, New Real Grilling, Smoke, Time to Grill, Way to Grill, Charcoal Grilling: The Art of Cooking with Live Fire; Real Grilling; and Touch-N-Go are trademarks; all of Weber-Stephen Products LLC, 200 East Daniels Road, Palatine, Illinois 60067 USA.





WWW.WEBER.COM®