

# PIN Genie Smart Lock App User Manual

## For PIN Genie Smart Lock Pro (PGD 728)

### Session 1: For Home Owners

#### 1. Download the PIN Genie Smart Lock App

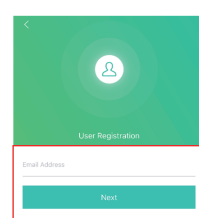
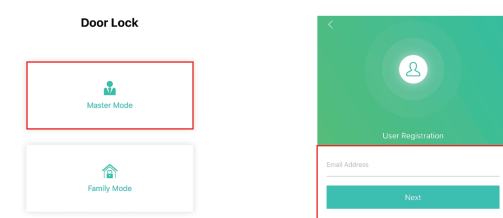
PIN Genie Smart Lock can be downloaded in both App store (iOS) and Google Play (Android). Please search "PIN Genie Smart Lock" and install as any other apps.

#### 2. Home Owner Registration

Note: It's not required for family members and visitors to register.

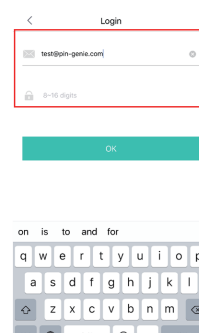
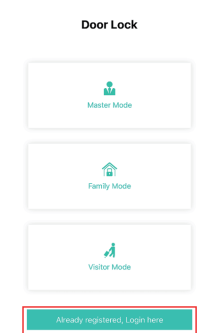
##### 2.1 New Use

Click "Master Mode" and use your email to register.



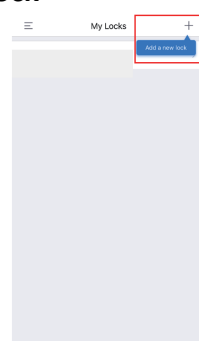
##### 2.2 Existing User:

If you already have an account, please log in with your email and password.

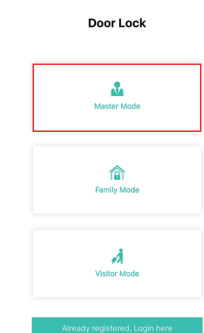


#### 3. Add PIN Genie Smart Lock

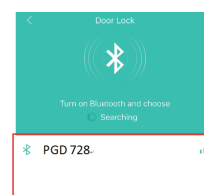
Step 1: After Login, Click "+" on the upper right corner to add a new lock.



#### Step 2: Choose "Master Mode".



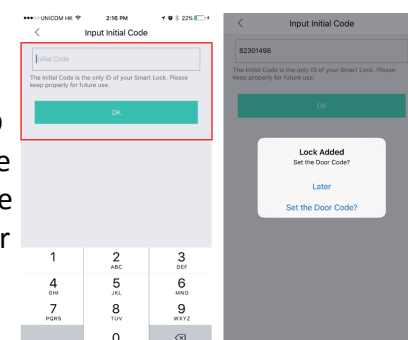
Step 3: Turn on Bluetooth on your phone and choose the smart lock named "PGD 728".



#### Step 4: Enter the Initial Code.

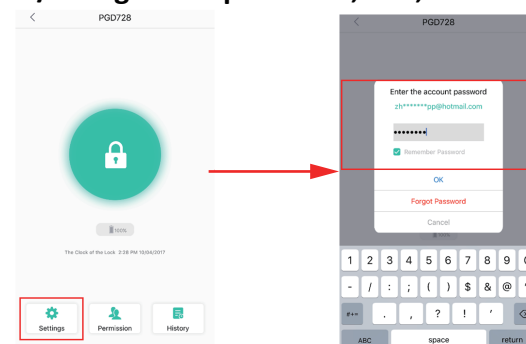
Note: 1) You can find the initial code on the VIP card.

2) The initial code is the ONLY ID for your smart lock, please keep it safe for future use. We recommend to save in "PIN Genie Vault", the best vault for all your private files, including logins, photos, videos, etc.,



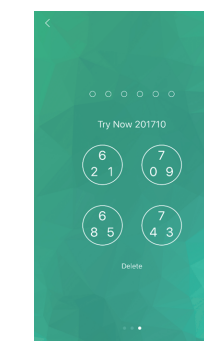
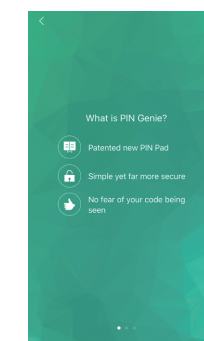
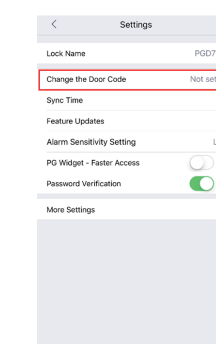
#### 4. Lock Settings: Set Lock Name, set/change door password, etc.,

Get into the Lock Page and choose "Settings", then enter your account password; Note: For easier access, you can choose "Remember Password" for future use.

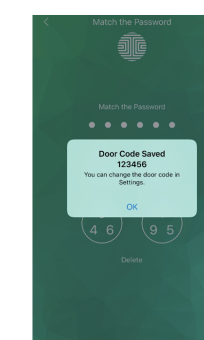
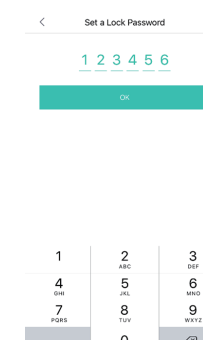


#### 4.1 Set / Change Door Code

Step 1: Choose "Change Door Code" and watch an introduction of PIN Genie PIN Pad, try to enter the numbers showed in the screen to try the PIN Pad.

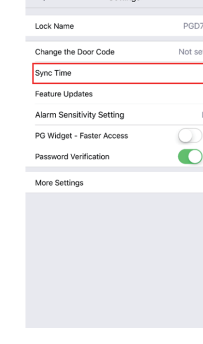


Step 2: Set the Door Code twice to match and confirm. The password/door code has been successfully set/changed.



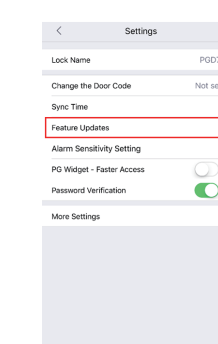
#### 4.2 Sync Time:

This function is to sync the time on the lock with the time on your phone.



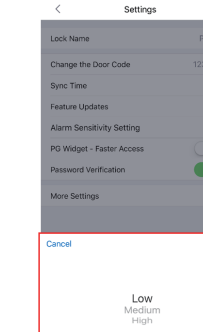
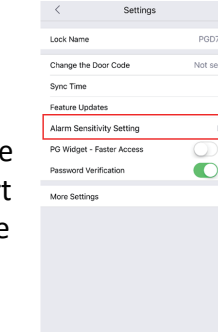
#### 4.3 Feature Updates:

This function is to update the firmware when



#### 4.4 Alarm Sensitivity Setting:

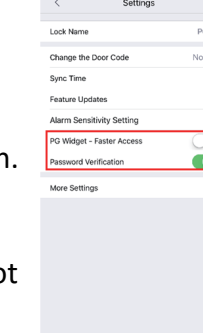
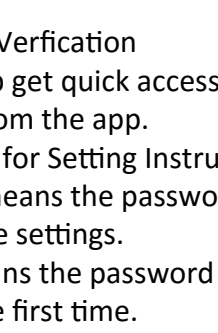
The PIN Genie Smart Lock has three levels of sensitivity. Note: Please make sure the Alarm is turned on in the smart lock. Details please refer to the smart lock user manual.



#### 4.5 PG Widget and Password Verification

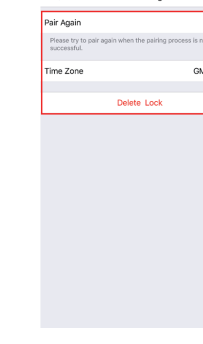
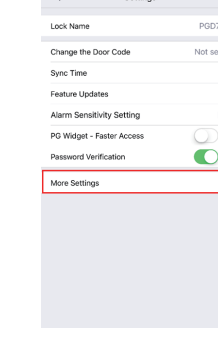
These two features are to help get quick access to lock / unlock the smart lock from the app.

1) Please press the PG Widget for Setting Instruction.  
2) Password Verification ON means the password is required every time you change settings. Password Verification OFF means the password is not required once you entered the first time.



#### 4.6 More Settings

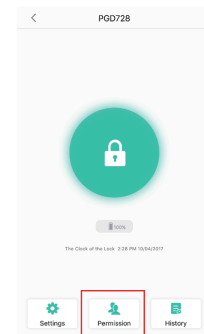
includes time zone setting and delete settings.



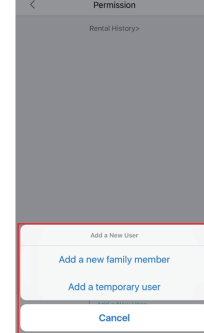
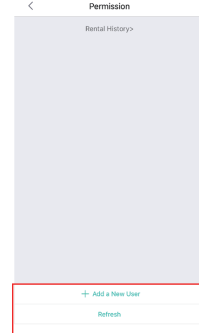
### 5. Permission Settings – Add family members and temporary users.

#### 5.1 Add a family member

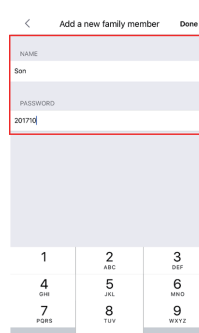
Step 1: Choose "Permission"



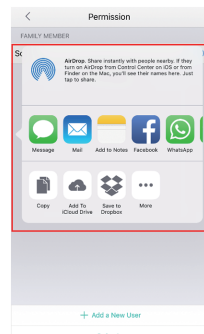
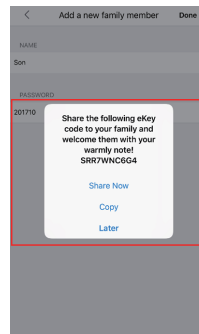
Step 2: Choose "Add a New User", and then "Add a new family member"



Step 3: Set Name and Password and press "Done" on the upper right corner.

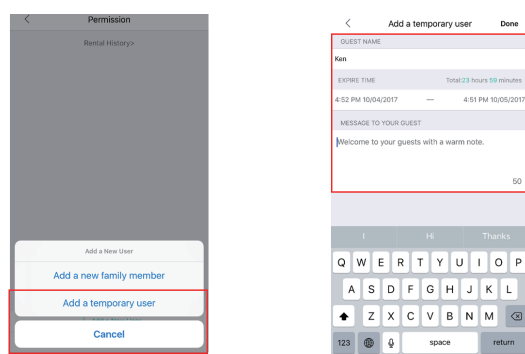


Step 4: Share the Code to any family member through text messages or any other apps.



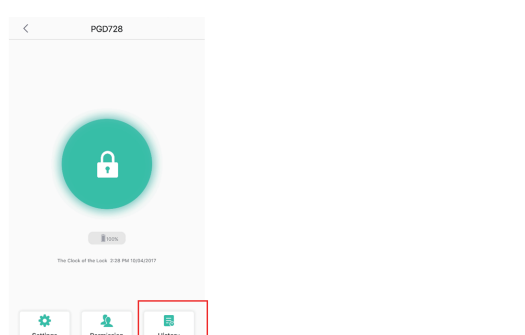
#### 5.2 Add a temporary use

Step 1: Get into Permission page and choose "Add a temporary user" as 5.1 and fill in the required information.



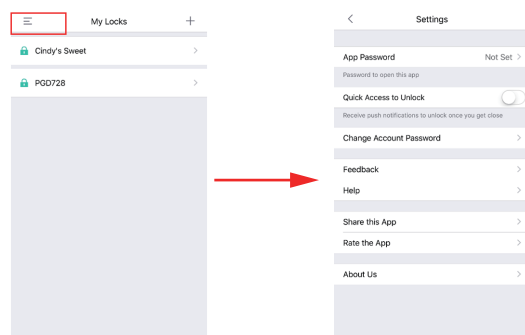
Step 2: Share the code as 5.1.

#### 6. Check Smart Lock Access History: You can check access history any time on your smart phone.



#### 7. Change Account Settings.

Please click the menu on the upper left corner to enter the account settings.



### Session 2: For Family member and Temporary users

As the family member and temporary user, you are not required to register an account.

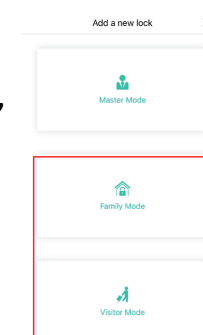
#### 1. Download the PIN Genie Smart Lock App

PIN Genie Smart Lock can be downloaded in both App store (iOS) and Google Play (Android). Please search "PIN Genie Smart Lock" and install as any other apps.

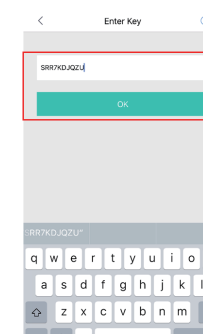
#### 2. Get the e-key by enter the code you received.

Step 1: Launch the PIN Genie Smart Lock App and make sure to turn on the Bluetooth on your phone.

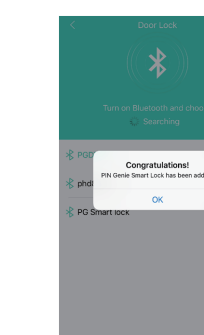
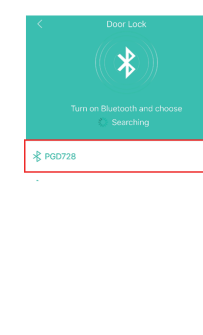
Step 2: Choose "Family Mode" or "Visitor Mode"



Step 3: Enter / Copy and Paste the code and Press "OK"



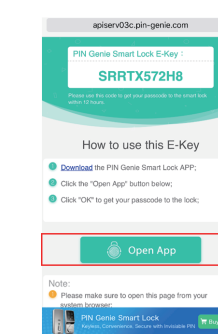
Step 4: Choose the Smart Lock you want to pair and you will be successfully add the lock in seconds.



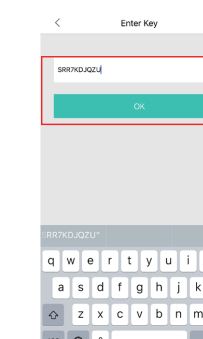
#### 3. Pair with the link you received.

Note: Your host will send you an link as follows. Please open the link in your system browser.

Step 1: Open the Link in your system browser and click "Open App"



Step 2: If you do not have the PIN Genie Smart Lock App yet, it will direct you to App Store to download; If you do have the PIN Genie Smart Lock App, it will direct you direct to the code page and automatically fill-in the short code for you to pair.



Step 3: Press "OK" to finish.