

IMPORTANT SAFETY INSTRUCTIONS

WARNING: When using any electrical appliances, basic safety precautions should always be followed. An especially cautious attitude is necessary.

READ ALL INSTRUCTIONS BEFORE USING KEEP AWAY FROM WATER

DANGER As with most electrical appliances, electrical parts are electrically live even when the switch is turned off. To avoid the risk of electrocution or death by electric shock follow these warnings:

- Do not touch barrel. Keep eyes and skin away from heated surfaces.
- Always unplug the appliance before cleaning or before you use.
- Do not use while bathing, or place this appliance where it can fall or be pulled into a bath or shower.
- If appliance falls into water, unplug it immediately, do not reach into the water to retrieve it.
- Never operate this appliance if it has a damaged cord or plug, if it is not working properly, if it has been dropped or damaged, or if it has come in contact with water.

WARNING

- To reduce the risk of burns, electrocution, fire or injury to person:
- An appliance should never be left unattended when plugged in.
- Do not pull, twist, or wrap the cord around when unplugged.
- Keep the cord away from heated surfaces.
- Clear space around when this appliance is used in or near children or by individuals with certain disabilities.
- Use this appliance only for its intended use as described in this manual. Do not use for anything not intended by the manufacturer.
- Never use this appliance with a damaged cord or plug, if appliance is not working properly, if it has been damaged or if appliance came in contact with water. Refer the appliance to an authorized service center for examination and repair.
- Never use while sleeping.
- Never drop or insert any objects into any openings.
- Do not use outdoors, operate where several (3) products are being used or where oxygen is being administered.
- Clear space around cord with appliance.
- This appliance and barrel are hot when in use. Do not let eyes or bare skin touch heated surfaces.
- Do not touch the housing of your cord or the Curl Dial as they are hot when in use.

IMPORTANT SAFEGUARD

- Do not insert your appliance into any objects or place it over an eye.
- Never hang your appliance into any objects or place it over an eye.

SAVE THESE INSTRUCTIONS OPERATING INSTRUCTIONS

- This appliance is intended for household use.
- This appliance is designed to operate ONLY on standard electrical outlets: 120V/120, 50/60Hz.
- This appliance has a polarized plug (one blade is wider than the other). As a safety feature, the plug will fit in a polarized outlet only. If the plug does not fit, unplug the appliance, reverse the plug or contact a qualified electrician. Do not attempt to fix this safety feature.

HAIR CURLING INSTRUCTIONS

- Ensure hair is clean, completely dry and untangled before using this curling tool.
- For best results, start with warm washed and dried hair.
- Plug in an electrical outlet and slide switch to the LOW / HIGH temperature setting.
- The LED light will turn on when the appliance is on and is in the ON position.
- Heat light will turn blue when using appliance has reached appropriate temperature.

WARNING: The curling tool's diamond ceramic coated barrel will get very hot within a few seconds of turning on and should not be placed in contact with skin or eyes after it has been turned on.

HAIR CURLING GUIDE

With the touch of a button Instawave transforms straight locks into tangle-free curls in seconds! Instawave is the easiest, fastest way to create curl, after, curl, after, curl instantly. Please make sure to remove any objects from your facial area to avoid possible snagging of the objects on the curl dial (i.e. earrings, neckties, etc.)

WARNING: PRODUCT GETS CALD! INSTAWAVE DOWNWARD. HAIR WILL COME UNDONE WITH THIS MOTION.

STEP 1: Slide switch to the LOW or HIGH temperature setting.

LOW SETTING = looser curls or waves
HIGH SETTING = tighter curls or waves

STEP 2:



STYLE OF CURLS
When curling, the longer your hair is heated, the tighter the curl will be.
- Looser curls or waves: Curl for 3-5 seconds on LOW setting
- Medium curls: Curl for 4-8 seconds on LOW or HIGH setting
- Tighter curls or waves: 6-10 seconds on HIGH setting

STEP 3:



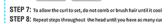
STEP 4: Press button to begin setting the curl barrel. The Curl Dial will automatically begin cutting and curling hair.

STEP 5:



STEP 6: Continue pressing button until hair is fully around barrel. Once hair is around barrel, release button and allow barrel to cool. Do not pull Instawave diagonally.

STEP 7:



WARNING: PLEASE FOLLOW DIRECTIONS AS NOTED. THE RISK OF SNAGGING HAIR WILL INCREASE IF DIRECTIONS ARE NOT FOLLOWED.

GET TO KNOW YOUR INSTAWAVE

Features:



10 Minute Auto Shut-Off function
After 10 minutes the iron turns off automatically, please plug the swivel cord in the OFF position and turn on barrel.

DIAMOND CERAMIC TECHNOLOGY

This appliance is made with name diamond particles which increase its durability and conductivity, providing consistent heat for a 8-second heat. Combine that with the ceramic barrel which generates negative ions that neutralize the positive ions that cause static electricity and frizz, and you're left with beautiful, shiny, bouncy hair.

USER MAINTENANCE

This appliance requires only maintenance. No lubrication is needed. Keep external surfaces clean and free of dust, dirt, and hair spray. If cleaning is necessary, disconnect the appliance from power source, wipe exterior with damp cloth, if the cord becomes twisted, untwist prior to use.

WARNING: if any malfunctions occur, DO NOT attempt to repair yourself! This appliance has no user serviceable parts.

STORAGE

- When not in use, unplug appliance.
- Allow the appliance to cool and store out of reach from children in a safe, dry location.
- Never wrap the cord around the appliance since this will cause the cord to wear prematurely and shorten its life.
- Avoid pulling or tugging for long life and avoid jerking, bending sharply, twisting or staining cord, especially at plug connections.

TWO YEAR LIMITED WARRANTY

Kiss Products, Inc. warrants this product against defects in material or workmanship as follows: For a period of 24 months from the date of purchase, if this product is determined to be defective, Kiss Products, Inc. will repair or replace the product, at its option, at no charge. This warranty does not cover cosmetic damages or damages due to supernatural incidents, accident, misuse, abuse, negligence, commercial use, or modifications of or to the product. This warranty does not cover damage due to improper operation or maintenance, connection to improper voltage or attempting to connect to other than the power source intended for the product. This warranty does not cover product sold AS IS in the United States, or consumables. This warranty is void only in the United States. Proof of purchase in the form of a bill of sales or receipted invoice which is evidence that the unit is within the warranty period must be presented to obtain warranty service.

REPAIR OR REPLACEMENT AS PROVIDED UNDER THIS WARRANTY IS THE EXCLUSIVE REMEDY OF THE CONSUMER. KISS SHALL NOT BE LIABLE FOR ANY INCIDENTAL OR CONSEQUENTIAL DAMAGES OR RECOVERY OF ANY EXPRESS OR IMPLIED WARRANTIES OR CONTRACTS. EXCEPT TO THE EXTENT PROHIBITED BY APPLICABLE LAW, ANY IMPLIED WARRANTY OF MERCHANTABILITY OR FITNESS FOR A PARTICULAR PURPOSE OF THIS PRODUCT IS LIMITED IN DURATION OF THIS WARRANTY.

Some states do not allow the exclusion or limitation of incidental or consequential damages, or the extension or modification of how long an implied warranty lasts, so the above limitation or exclusion may not apply to you. This warranty gives you specific legal rights, and you may have other rights which may vary from state to state.

©2010 Kiss Products, Inc. All rights reserved. Kiss Products, Inc. is a registered trademark of Kiss Products, Inc. Kiss Products, Inc. is a registered trademark of Kiss Products, Inc. Kiss Products, Inc. is a registered trademark of Kiss Products, Inc.

©2010 Kiss Products, Inc. All rights reserved. Kiss Products, Inc. is a registered trademark of Kiss Products, Inc. Kiss Products, Inc. is a registered trademark of Kiss Products, Inc. Kiss Products, Inc. is a registered trademark of Kiss Products, Inc.

©2010 Kiss Products, Inc. All rights reserved. Kiss Products, Inc. is a registered trademark of Kiss Products, Inc. Kiss Products, Inc. is a registered trademark of Kiss Products, Inc. Kiss Products, Inc. is a registered trademark of Kiss Products, Inc.

©2010 Kiss Products, Inc. All rights reserved. Kiss Products, Inc. is a registered trademark of Kiss Products, Inc. Kiss Products, Inc. is a registered trademark of Kiss Products, Inc. Kiss Products, Inc. is a registered trademark of Kiss Products, Inc.

©2010 Kiss Products, Inc. All rights reserved. Kiss Products, Inc. is a registered trademark of Kiss Products, Inc. Kiss Products, Inc. is a registered trademark of Kiss Products, Inc. Kiss Products, Inc. is a registered trademark of Kiss Products, Inc.

©2010 Kiss Products, Inc. All rights reserved. Kiss Products, Inc. is a registered trademark of Kiss Products, Inc. Kiss Products, Inc. is a registered trademark of Kiss Products, Inc. Kiss Products, Inc. is a registered trademark of Kiss Products, Inc.

©2010 Kiss Products, Inc. All rights reserved. Kiss Products, Inc. is a registered trademark of Kiss Products, Inc. Kiss Products, Inc. is a registered trademark of Kiss Products, Inc. Kiss Products, Inc. is a registered trademark of Kiss Products, Inc.

©2010 Kiss Products, Inc. All rights reserved. Kiss Products, Inc. is a registered trademark of Kiss Products, Inc. Kiss Products, Inc. is a registered trademark of Kiss Products, Inc. Kiss Products, Inc. is a registered trademark of Kiss Products, Inc.

©2010 Kiss Products, Inc. All rights reserved. Kiss Products, Inc. is a registered trademark of Kiss Products, Inc. Kiss Products, Inc. is a registered trademark of Kiss Products, Inc. Kiss Products, Inc. is a registered trademark of Kiss Products, Inc.

©2010 Kiss Products, Inc. All rights reserved. Kiss Products, Inc. is a registered trademark of Kiss Products, Inc. Kiss Products, Inc. is a registered trademark of Kiss Products, Inc. Kiss Products, Inc. is a registered trademark of Kiss Products, Inc.

©2010 Kiss Products, Inc. All rights reserved. Kiss Products, Inc. is a registered trademark of Kiss Products, Inc. Kiss Products, Inc. is a registered trademark of Kiss Products, Inc. Kiss Products, Inc. is a registered trademark of Kiss Products, Inc.

©2010 Kiss Products, Inc. All rights reserved. Kiss Products, Inc. is a registered trademark of Kiss Products, Inc. Kiss Products, Inc. is a registered trademark of Kiss Products, Inc. Kiss Products, Inc. is a registered trademark of Kiss Products, Inc.

©2010 Kiss Products, Inc. All rights reserved. Kiss Products, Inc. is a registered trademark of Kiss Products, Inc. Kiss Products, Inc. is a registered trademark of Kiss Products, Inc. Kiss Products, Inc. is a registered trademark of Kiss Products, Inc.

©2010 Kiss Products, Inc. All rights reserved. Kiss Products, Inc. is a registered trademark of Kiss Products, Inc. Kiss Products, Inc. is a registered trademark of Kiss Products, Inc. Kiss Products, Inc. is a registered trademark of Kiss Products, Inc.

©2010 Kiss Products, Inc. All rights reserved. Kiss Products, Inc. is a registered trademark of Kiss Products, Inc. Kiss Products, Inc. is a registered trademark of Kiss Products, Inc. Kiss Products, Inc. is a registered trademark of Kiss Products, Inc.

©2010 Kiss Products, Inc. All rights reserved. Kiss Products, Inc. is a registered trademark of Kiss Products, Inc. Kiss Products, Inc. is a registered trademark of Kiss Products, Inc. Kiss Products, Inc. is a registered trademark of Kiss Products, Inc.

©2010 Kiss Products, Inc. All rights reserved. Kiss Products, Inc. is a registered trademark of Kiss Products, Inc. Kiss Products, Inc. is a registered trademark of Kiss Products, Inc. Kiss Products, Inc. is a registered trademark of Kiss Products, Inc.

©2010 Kiss Products, Inc. All rights reserved. Kiss Products, Inc. is a registered trademark of Kiss Products, Inc. Kiss Products, Inc. is a registered trademark of Kiss Products, Inc. Kiss Products, Inc. is a registered trademark of Kiss Products, Inc.

©2010 Kiss Products, Inc. All rights reserved. Kiss Products, Inc. is a registered trademark of Kiss Products, Inc. Kiss Products, Inc. is a registered trademark of Kiss Products, Inc. Kiss Products, Inc. is a registered trademark of Kiss Products, Inc.

©2010 Kiss Products, Inc. All rights reserved. Kiss Products, Inc. is a registered trademark of Kiss Products, Inc. Kiss Products, Inc. is a registered trademark of Kiss Products, Inc. Kiss Products, Inc. is a registered trademark of Kiss Products, Inc.

©2010 Kiss Products, Inc. All rights reserved. Kiss Products, Inc. is a registered trademark of Kiss Products, Inc. Kiss Products, Inc. is a registered trademark of Kiss Products, Inc. Kiss Products, Inc. is a registered trademark of Kiss Products, Inc.

©2010 Kiss Products, Inc. All rights reserved. Kiss Products, Inc. is a registered trademark of Kiss Products, Inc. Kiss Products, Inc. is a registered trademark of Kiss Products, Inc. Kiss Products, Inc. is a registered trademark of Kiss Products, Inc.

©2010 Kiss Products, Inc. All rights reserved. Kiss Products, Inc. is a registered trademark of Kiss Products, Inc. Kiss Products, Inc. is a registered trademark of Kiss Products, Inc. Kiss Products, Inc. is a registered trademark of Kiss Products, Inc.

©2010 Kiss Products, Inc. All rights reserved. Kiss Products, Inc. is a registered trademark of Kiss Products, Inc. Kiss Products, Inc. is a registered trademark of Kiss Products, Inc. Kiss Products, Inc. is a registered trademark of Kiss Products, Inc.

INSTRUCCIONES IMPORTANTES DE SEGURIDAD

ADVERTENCIA: Cuando use un electrodoméstico, deberá respetar siempre las instrucciones de seguridad. Sea especialmente cuidadoso si hay niños presentes.

LEA TODAS LAS INSTRUCCIONES ANTES DE USAR MANTÉNGALA FUERA DEL AGUA

PELIGRO: Al igual que con la mayoría de los electrodomésticos, las partes eléctricas algunas veces pueden convertirse calientes al aparato está encendido. Por eso, evite tocar las partes calientes o mantener por mucho tiempo el aparato en contacto con ellas.

No toque el cilindro. Mantenga los ojos y la piel alejados de las superficies calientes.

Desenchufe siempre el aparato inmediatamente después de usarlo.

No use el aparato mientras se baña, ni cuando se bañe, ni cuando las caudales estén en posición o cuando se estén bañando en una ducha o bañadero.

Si el aparato cae en el agua, desenchúfelo de inmediato, no intente sacarlo del agua. Si nunca ponga en funcionamiento el aparato si observa que el cable o el enchufe está húedo, o si las instrucciones de seguridad no se han seguido o si el estado es diferente al que se muestra.

ADVERTENCIA: Nunca intente el riesgo de quemaduras, electrocución, incendio e daño a sus personas:

- Un electrodoméstico no debe quedar nunca desenchufado mientras está en contacto con el agua.
- No toque, retire o empuje el cable alfiler del aparato.
- Mantenga el cable fuera de superficies calientes.
- Es necesario asegurar de que el aparato cuando está en uso o cerca de niños o personas con alguna discapacidad.
- Siempre asegure el aparato cuando se bañe o cuando se está bañando en una ducha o bañadero.
- Nunca ponga en funcionamiento este aparato sin el cable o enchufe del agua. Desenchufe el aparato o un centro de servicio autorizado para revisión y reparación.
- No lo use nunca para dormir.
- Nunca deje que un niño o alguien más toque el aparato.
- No lo use en espacios exteriores ni en lugares donde se están usando productos en aerosol (spray) ni en una administración original.
- No use electrodomésticos con este aparato.

14. No coloque el dispositivo caliente directamente sobre una superficie mientras está caliente o enfriado.

15. No lo ponga en funcionamiento con un cable dañado o roto.

PROTECCIÓN IMPORTANTE

- No cargue el aparato en ningún enchufe, ni en cubos.
- Nunca introduzca el aparato en ningún enchufe, ni en cubos.

CONSERVE ESTAS INSTRUCCIONES INSTRUCCIONES DE FUNCIONAMIENTO

- Este aparato es para uso doméstico.
- Este aparato está diseñado para operar SOLAMENTE en tomacorrientes estándar: 120V/120, 50/60Hz.
- Este aparato tiene un enchufe polarizado (una pata es más larga que la otra). Como función de seguridad, el enchufe sólo encaja en un tomacorriente polarizado idéntico en su tipo. Si el enchufe no encaja de manera firme, invierta la posición del enchufe o contacte a un electricista calificado. No intente alterar esta función de seguridad.

INSTRUCCIONES PARA RIZAR EL CABELLO

- Asegure de que el cabello está limpio, completamente seco y lavado antes de usar esta herramienta de rizo.
- Para obtener los mejores resultados, comience con el cabello limpio y seco.
- Enchufe a un tomacorriente y encienda en la función de BAJA / ALTA temperatura.
- La luz LED estará en rojo cuando el aparato está encendido y calentando.
- La luz roja pasará a azul cuando el aparato para rizar ha alcanzado la temperatura óptima.

ADVERTENCIA: El cilindro cerámico cubierto en diamantes para rizarlo estará muy caliente al cabo de algunas segundos de haberlo encendido y no deberá ponerse en contacto con la piel o los ojos una vez encendido.

GUÍA PARA RIZAR EL CABELLO
Con tan sólo pulsar un botón, el rizador transforma los cabellos lisos en rizos deseados! Simplemente la manera más fácil y rápida de crear rizos en los rizos - instantáneamente. Please make sure to remove any objects from your facial area to avoid possible snagging of the objects on the curl dial (i.e. earrings, neckties, etc.)

ADVERTENCIA: EL CILINDRO CERÁMICO CUBIERTO EN DIAMANTES PARA RIZAR EL CABELLO SE CALIENTA MUY RÁPIDAMENTE. NO DEBE Ponerse EN CONTACTO CON LA PIEL O LOS OJOS UNA VEZ ENCENDIDO.

ADVERTENCIA: SIGA LAS INSTRUCCIONES DE COMO SE DEBE USAR EL RIZO DE ENREDAR EL CABELLO ADVERTENCIA: SI NO SE SIGAN LAS INSTRUCCIONES

PASO 1. Deslice el botón hacia la posición de BAJA o ALTA temperatura.

BAJA TEMPERATURA = rizos más suaves o ondas
ALTA TEMPERATURA = rizos más apretados e espirales

PASO 2:



ESTILO DE RIZOS
Cuando riza, mientras más tiempo mantiene el cabello calentado, más apretado será el rizo.
- Rizos más suaves o ondas: Rize durante 3-5 segundos a temperatura BAJA.
- Rizos más apretados: Rize durante 4-8 segundos a temperatura BAJA o ALTA.
- Rizos más apretados e espirales: 6-10 segundos a temperatura ALTA.

PASO 3:



PASO 4: Oprime el botón para comenzar a girar el cilindro. El Curl Dial comenzará automáticamente a cortar y rizar el cabello.

PASO 5:



PASO 6: Sigue oprimiendo el botón hasta que el cabello está totalmente alrededor del cilindro. Una vez que está alrededor del cilindro, suelte el botón y permita que el cilindro se enfríe un momento.

PASO 7:



ADVERTENCIA: SIGA LAS INSTRUCCIONES DE COMO SE DEBE USAR EL RIZO DE ENREDAR EL CABELLO ADVERTENCIA: SI NO SE SIGAN LAS INSTRUCCIONES

PARA CONOCER SU INSTAWAVE

Funciones:



Función de Autoapagado en 10 min
Después de 10 minutos el rizador se apagará automáticamente, por favor enchufe el cable en la posición OFF y encienda el cilindro.

TECNOLOGÍA DE DIAMANTE Y CERÁMICA

Este aparato está hecho con partículas de diamante que mejoran su durabilidad y conductividad, proporcionando calor uniforme para un acabado perfecto. Combinado con el cilindro de cerámica que genera iones negativos que neutralizan los iones positivos que causan electricidad estática y frizz, se obtienen rizos deseados, brillantes y saludables.

MANTENIMIENTO DEL USUARIO

Este aparato prácticamente no requiere mantenimiento. No necesita lubricación. Mantenga las superficies externas limpias y sin polvo, suciedad o rizo para el cabello. Si necesita limpiar el aparato, desconecte de la fuente de energía, limpie el exterior con un paño húmedo. Si el cable se enrolla, desenrólese antes de usar.

ADVERTENCIA: Si el aparato no funciona correctamente, NO intente repararlo usted mismo. Este aparato no tiene partes que puedan ser reparadas por el usuario.

CONSERVACIÓN

- Cuando no está en uso, desenchufe el aparato.
- Deje enfriar el aparato y guárdelo fuera de alcance de los niños en un lugar seguro y seco.
- Nunca enrolle el cable del aparato o que este enrollado que el cable se degrade prematuramente y se rompa.
- Evite tirar el cable fuertemente para permitir que su vida útil y evitar sucaídos, daños o traumatismos, enrollarlo o torcerlo, especialmente en enchufes.

©2010 Kiss Products, Inc. All rights reserved. Kiss Products, Inc. is a registered trademark of Kiss Products, Inc. Kiss Products, Inc. is a registered trademark of Kiss Products, Inc. Kiss Products, Inc. is a registered trademark of Kiss Products, Inc.

©2010 Kiss Products, Inc. All rights reserved. Kiss Products, Inc. is a registered trademark of Kiss Products, Inc. Kiss Products, Inc. is a registered trademark of Kiss Products, Inc. Kiss Products, Inc. is a registered trademark of Kiss Products, Inc.

©2010 Kiss Products, Inc. All rights reserved. Kiss Products, Inc. is a registered trademark of Kiss Products, Inc. Kiss Products, Inc. is a registered trademark of Kiss Products, Inc. Kiss Products, Inc. is a registered trademark of Kiss Products, Inc.

©2010 Kiss Products, Inc. All rights reserved. Kiss Products, Inc. is a registered trademark of Kiss Products, Inc. Kiss Products, Inc. is a registered trademark of Kiss Products, Inc. Kiss Products, Inc. is a registered trademark of Kiss Products, Inc.

©2010 Kiss Products, Inc. All rights reserved. Kiss Products, Inc. is a registered trademark of Kiss Products, Inc. Kiss Products, Inc. is a registered trademark of Kiss Products, Inc. Kiss Products, Inc. is a registered trademark of Kiss Products, Inc.

IMPORTANT: Your return must be accompanied by

- Proof of purchase: Your bill of sale indicating the place and date of purchase
- Returning hair appliance
- Shipping information Card (found below) indicating the nature of the problem
- ST in cash or check for shipping and handling

MAIL TO:
Kiss Products, Inc.
Hair Appliance Customer Services
57 Seaview Blvd.
Port Washington, NY 11050
Email: customerservice@kissusa.com

KISS WARRANTY INFORMATION CARD

First Name: _____
Last Name: _____
Address: _____
City: _____
State: _____
Zip code: _____
Email: _____
Model Name / Model #: _____
Date of Purchase: _____
Reason for return: _____

REPAIR OR REPLACEMENT AS PROVIDED UNDER THIS WARRANTY IS THE EXCLUSIVE REMEDY OF THE CONSUMER. KISS SHALL NOT BE LIABLE FOR ANY INCIDENTAL OR CONSEQUENTIAL DAMAGES OR RECOVERY OF ANY EXPRESS OR IMPLIED WARRANTIES OR CONTRACTS. EXCEPT TO THE EXTENT PROHIBITED BY APPLICABLE LAW, ANY IMPLIED WARRANTY OF MERCHANTABILITY OR FITNESS FOR A PARTICULAR PURPOSE OF THIS PRODUCT IS LIMITED IN DURATION OF THIS WARRANTY.

Some states do not allow the exclusion or limitation of incidental or consequential damages, or the extension or modification of how long an implied warranty lasts, so the above limitation or exclusion may not apply to you. This warranty gives you specific legal rights, and you may have other rights which may vary from state to state.

©2010 Kiss Products, Inc. All rights reserved. Kiss Products, Inc. is a registered trademark of Kiss Products, Inc. Kiss Products, Inc. is a registered trademark of Kiss Products, Inc. Kiss Products, Inc. is a registered trademark of Kiss Products, Inc.

©2010 Kiss Products, Inc. All rights reserved. Kiss Products, Inc. is a registered trademark of Kiss Products, Inc. Kiss Products, Inc. is a registered trademark of Kiss Products, Inc. Kiss Products, Inc. is a registered trademark of Kiss Products, Inc.

©2010 Kiss Products, Inc. All rights reserved. Kiss Products, Inc. is a registered trademark of Kiss Products, Inc. Kiss Products, Inc. is a registered trademark of Kiss Products, Inc. Kiss Products, Inc. is a registered trademark of Kiss Products, Inc.

©2010 Kiss Products, Inc. All rights reserved. Kiss Products, Inc. is a registered trademark of Kiss Products, Inc. Kiss Products, Inc. is a registered trademark of Kiss Products, Inc. Kiss Products, Inc. is a registered trademark of Kiss Products, Inc.

©2010 Kiss Products, Inc. All rights reserved. Kiss Products, Inc. is a registered trademark of Kiss Products, Inc. Kiss Products, Inc. is a registered trademark of Kiss Products, Inc. Kiss Products, Inc. is a registered trademark of Kiss Products, Inc.

©2010 Kiss Products, Inc. All rights reserved. Kiss Products, Inc. is a registered trademark of Kiss Products, Inc. Kiss Products, Inc. is a registered trademark of Kiss Products, Inc. Kiss Products, Inc. is a registered trademark of Kiss Products, Inc.

©2010 Kiss Products, Inc. All rights reserved. Kiss Products, Inc. is a registered trademark of Kiss Products, Inc. Kiss Products, Inc. is a registered trademark of Kiss Products, Inc. Kiss Products, Inc. is a registered trademark of Kiss Products, Inc.

©2010 Kiss Products, Inc. All rights reserved. Kiss Products, Inc. is a registered trademark of Kiss Products, Inc. Kiss Products, Inc. is a registered trademark of Kiss Products, Inc. Kiss Products, Inc. is a registered trademark of Kiss Products, Inc.

©2010 Kiss Products, Inc. All rights reserved. Kiss Products, Inc. is a registered trademark of Kiss Products, Inc. Kiss Products, Inc. is a registered trademark of Kiss Products, Inc. Kiss Products, Inc. is a registered trademark of Kiss Products, Inc.

©2010 Kiss Products, Inc. All rights reserved. Kiss Products, Inc. is a registered trademark of Kiss Products, Inc. Kiss Products, Inc. is a registered trademark of Kiss Products, Inc. Kiss Products, Inc. is a registered trademark of Kiss Products, Inc.

©2010 Kiss Products, Inc. All rights reserved. Kiss Products, Inc. is a registered trademark of Kiss Products, Inc. Kiss Products, Inc. is a registered trademark of Kiss Products, Inc. Kiss Products, Inc. is a registered trademark of Kiss Products, Inc.

©2010 Kiss Products, Inc. All rights reserved. Kiss Products, Inc. is a registered trademark of Kiss Products, Inc. Kiss Products, Inc. is a registered trademark of Kiss Products, Inc. Kiss Products, Inc. is a registered trademark of Kiss Products, Inc.

©2010 Kiss Products, Inc. All rights reserved. Kiss Products, Inc. is a registered trademark of Kiss Products, Inc. Kiss Products, Inc. is a registered trademark of Kiss Products, Inc. Kiss Products, Inc. is a registered trademark of Kiss Products, Inc.

©2010 Kiss Products, Inc. All rights reserved. Kiss Products, Inc. is a registered trademark of Kiss Products, Inc. Kiss Products, Inc. is a registered trademark of Kiss Products, Inc. Kiss Products, Inc. is a registered trademark of Kiss Products, Inc.

©2010 Kiss Products, Inc. All rights reserved. Kiss Products, Inc. is a registered trademark of Kiss Products, Inc. Kiss Products, Inc. is a registered trademark of Kiss Products, Inc. Kiss Products, Inc. is a registered trademark of Kiss Products, Inc.

©2010 Kiss Products, Inc. All rights reserved. Kiss Products, Inc. is a registered trademark of Kiss Products, Inc. Kiss Products, Inc. is a registered trademark of Kiss Products, Inc. Kiss Products, Inc. is a registered trademark of Kiss Products, Inc.

©2010 Kiss Products, Inc. All rights reserved. Kiss Products, Inc. is a registered trademark of Kiss Products, Inc. Kiss Products, Inc. is a registered trademark of Kiss Products, Inc. Kiss Products, Inc. is a registered trademark of Kiss Products, Inc.

©2010 Kiss Products, Inc. All rights reserved. Kiss Products, Inc. is a registered trademark of Kiss Products, Inc. Kiss Products, Inc. is a registered trademark of Kiss Products, Inc. Kiss Products, Inc. is a registered trademark of Kiss Products, Inc.

©2010 Kiss Products, Inc. All rights reserved. Kiss Products, Inc. is a registered trademark of Kiss Products, Inc. Kiss Products, Inc. is a registered trademark of Kiss Products, Inc. Kiss Products, Inc. is a registered trademark of Kiss Products, Inc.

©2010 Kiss Products, Inc. All rights reserved. Kiss Products, Inc. is a registered trademark of Kiss Products, Inc. Kiss Products, Inc. is a registered trademark of Kiss Products, Inc. Kiss Products, Inc. is a registered trademark of Kiss Products, Inc.

©2010 Kiss Products, Inc. All rights reserved. Kiss Products, Inc. is a registered trademark of Kiss Products, Inc.