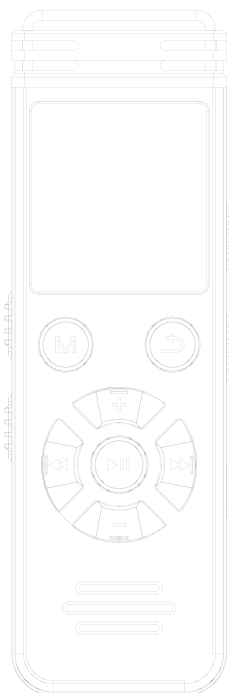


# EVISTR V508 User Manual

## PART 1



Thank you for purchasing a recorder from EVISTR. Customer satisfaction is our priority. If you have questions or problems, please feel free to contact to us.

- Our customer support email:

[support@evistr.com](mailto:support@evistr.com)

- Keep this booklet for future reference.

The Booklet Compiled by 7 main parts: Package Information, Warranty, Product Sketch, Quick Operation Guide, Basic Operation Guide, Menu Option, Frequently Asked Question

At **Quick Operation Guide and Basic Operation Guide**, we can learn how to use the devices function in short time

At the **Menu Options** Parts, we can find all functions for the devices

Notice: The device built-in 16GB, no TF card include. Device can directly use without TF card

### Package Information

- ✓ 1 x V508 Device
- ✓ 1 x USB Cable (for charging and data transfer)
- ✓ 1 x Earphone

1

### Product Warranty

- ✓ 1 year warranty unless registered with Evistr VIP

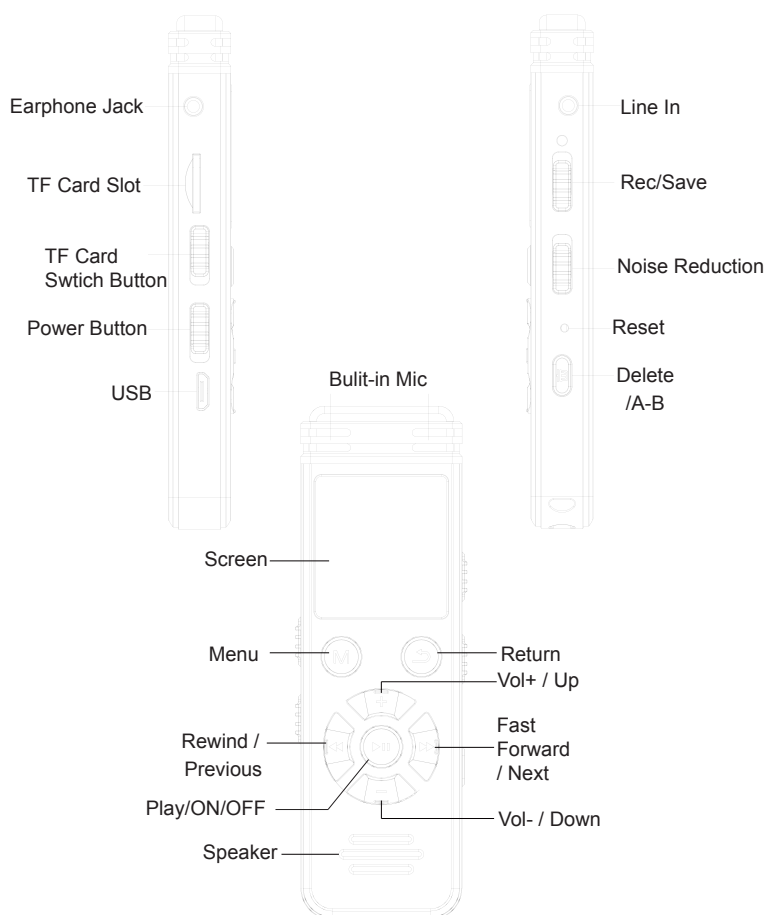
We highly recommend you register at our site to receive an extended warranty (18months), to verify the product authentication, and to have better customer service. Registration is free.

Register VIP within 30days via

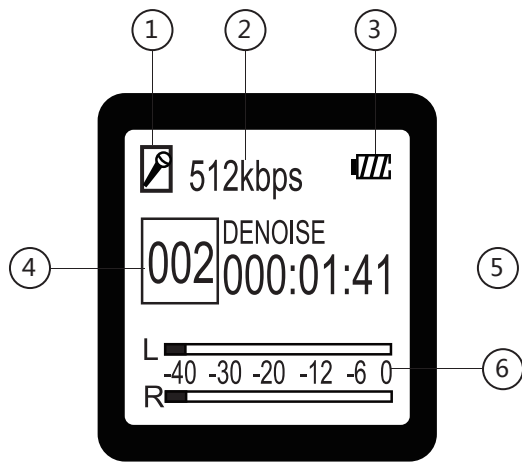
<http://www.evistr.com/vip> or email [support@evistr.com](mailto:support@evistr.com)

2

### Product Sketch



3



NO.	Function
1	Recording Source
2	Recording quality bit rate
3	Battery Bar (when battery bar is empty, battery needs recharging)
4	Total Recording File Count
5	Recording time
6	L / R Channel meter

## Quick Start Guide

**Turn ON device:** Press PLAY button for two seconds to turn on the device. (when power button at ON position)

**Recording:** push up REC button to begin recording.

**Save Recording:** press down REC button to save recording.

**Delete Recording:** when turn on device, press **◀◀/▶▶** to select file, and then press **DEL** button. We can delete the file we just saw. Select delete all to delete all files.

**Play a Recording:** by pressing PLAY button turn on the device, press **◀◀/▶▶** button to choose the recording you wish to hear -> press PLAY.

**Play Next / Previous Recording:** press the **◀◀/▶▶** button.

**Fast Forward / Rewind:** press and hold the **◀◀/▶▶** button.

**Recording Space:** when recording, press M, it will show how many hours the device can record

**A-B Repeat:** when playing file, press DEL button, we can use A-B repeat

## Important Notice for Using This Device

### DOs

- Listen to a test file on the device to check sound levels.
- Backup data as frequently as possible.
- Remember to push down REC button and save your recording each time.
- Keep this booklet for future reference.
- Contact customer service with Order ID or System Firmware Version Information, or Bar Code on the package for a more effective reply.

### DON'Ts

- Do not scratch the recorder body.
- If typing or writing near the device while record function is on, it will capture the noise.
- Do not delete a file or format the device unless the files have been backed up.
- Do not press any buttons when device is connected to a computer.
- Do not use non-original micro USB cable to transfer data from device to computer. Not all micro USB cables support data transfer.

- Do not use the Voice Activated Function unless needed. It may not record some low decibel voice you want recorded.

## Operational Explanations:

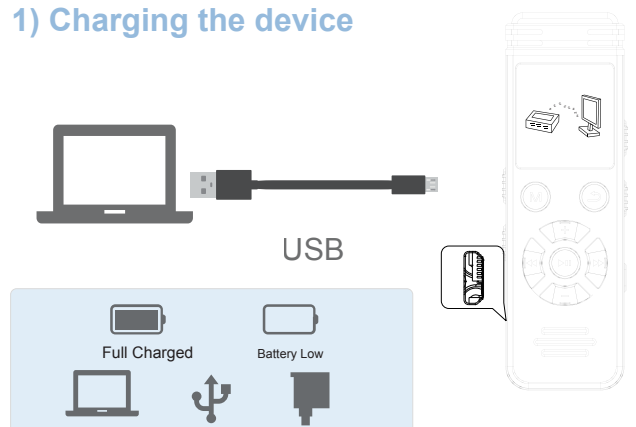
These instructions will say “hit” or “press and hold.”

**Hit:** a short press of the button.

**Press and hold:** press the button a few seconds until the screen shows the information.

## Basic Operation Guide

### 1) Charging the device



Connect to Computer or USB Socket to Charge

## 2) Turn on the recorder



Press PLAY turn ON device

## 3) Recording



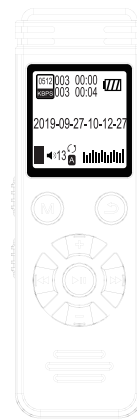
**Notice:** When recording, press M button, it can show how many hours the device can record

## 4) Play Recording

After recording, press PLAY, it will play file just saved



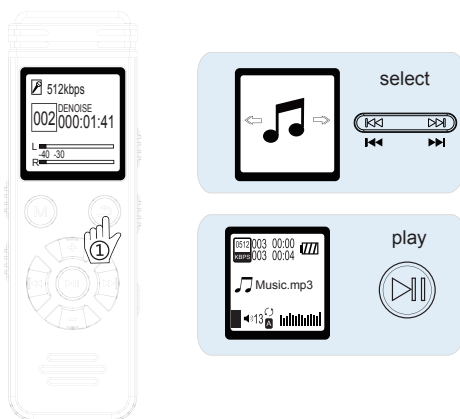
## 5) Fast Forward / Rewind / Adjust Volume



- Fast Forward / Rewind  
Press and hold
  - Previous / Next  
Tap it
  - Adjust Speaker Volume  
Tap it
- 9

Notice: this functions work when it is playing

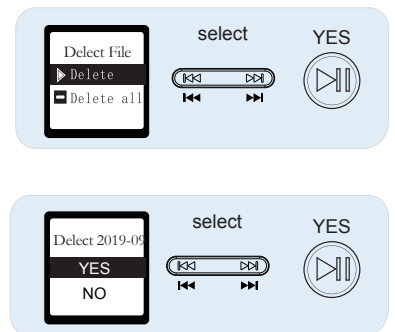
## 6) Play Music



Go main menu, select MUSIC, and the play

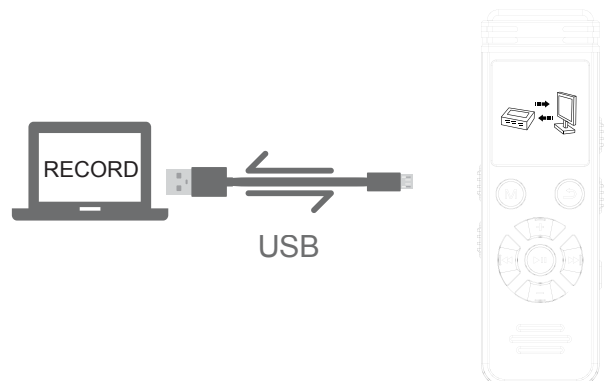
**Note:** the songs do not put inside the RECORD folder, you could create a new folder for it.

## 7) Delete Recording



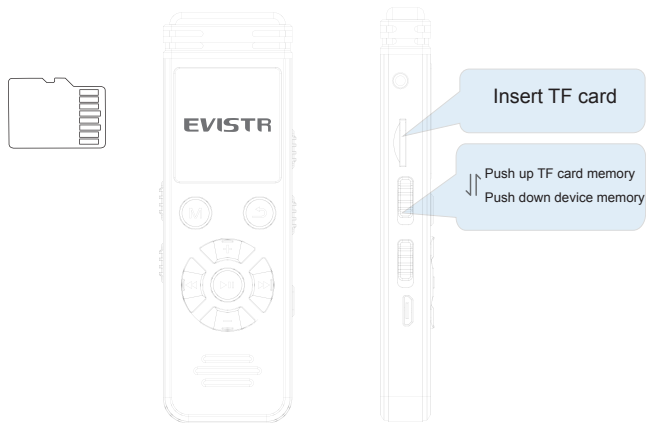
Press DEL to delete file

## 8) Data Transfer



## 9) Use with TF Card

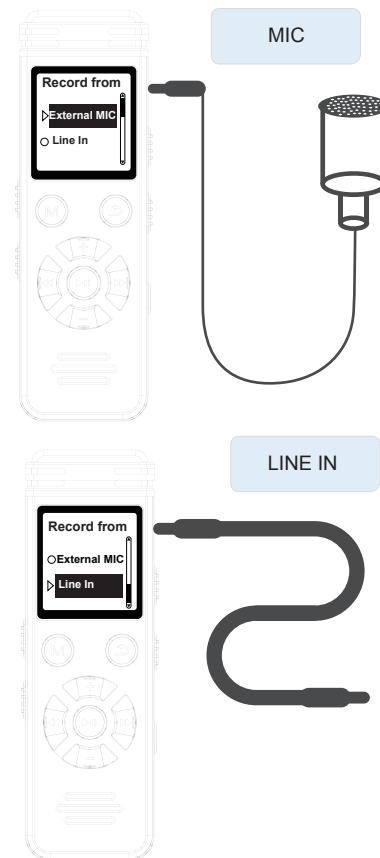
1. Insert TF card at correctly Direction
2. Switch TF card memory



- Notice: device built-in 16GB, can directly use

12

## 10) LINE IN/ EXTERNAL MIC

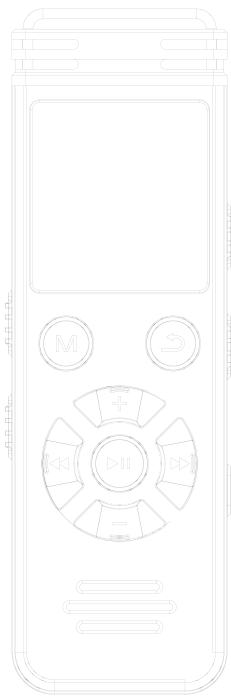


Push REC, we need choose correctly source  
EXTERNAL MIC: for external microphone  
LINE IN: for line in audio cable

13

# EVISTR V508 User Manual

## PART 2



### 2.3 Track AVR Mode

AVR Switch:

turn on / off Activated Voice Record Mode

AVR Level:

select the voice activated recorder sensitivity level

**At AVR mode, we still need to press STOP to save recordings when we complete a recording task.**

**Voice Activated Sensitive Level**

## Menu Options

Press, ↶ we can return to MAIN menu. The **PLAY** button works as **OK/Confirm** in menu options

### 1. Voice

Press Play (turn on device)-> tap ↶ -> press ⏪ / ⏩ to select Voice -> Hit PLAY, we can see all recordings file from here

### 2. Record Settings

Press Play (turn on device) -> hit ↶ -> press ⏪ / ⏩ to select Record Settings -> Hit PLAY, we can see all recording function and settings from here

#### 2.1 Record Format

Select at this Record Format, hit PLAY, we can choose WAV Rec or MP3 Rec. Hit PLAY to save choice

#### 2.2 Set Rec bitrate

After choice the Record Format, we can change the recording bit rate from this option

Format	Bit Rate	16G Recording time length
WAV	512kpbs	72hours
WAV	1024kpbs	36hours
WAV	1536kpbs	24hours
MP3	128kpbs	290hours
MP3	64kpbs	580hours
MP3	32kpbs	1160hours

From Level 1 to Level 6: Level 1 only picks up voice or sound above 70db, a very loud sound. Level 5 is very sensitive, so any quiet sound will be recorded. **(i.e. normal environmental noise will activate recording).**

**Note:** do not turn on this function for important lectures or meetings. It may skip or lose some very important sentences at low decibels. Use regular on/record/stop for meetings.

#### 2.4 Record Monitor

Turn On this function, plug in earphone, we can hear and monitor what it is recording

#### 2.5 Led On/Off

ON: default. LED indicator light is ON.

OFF: turn off the LED indicator light.

#### 2.6 Record Subsection

Select at this settings, hit PLAY, We can choose the recording file time length at Half Hour, One Hour, Two Hour, CLOSE.

When this function was set, the recording device will automatically save a file at the selected time length and start a new recording, unless we press STOP to save and finish the recording task.

## 2.7 Auto Record

**Record on/off:** turn on the auto record function

**Start Time:** set when the device start to record

**End Time:** set when the device save file and stop record

**Auto Record Cycle:** set auto record function cycle. It can function at Once, Daily or Work Day

**To use this function properly, we must do this:**

- A. Set correctly system time for the device
- B. Keep the power button at ON position

## 2.8 Recording Library

See all recordings files from here

## 2.9 Record From

When insert line in cable or external microphone, we push up REC to record, we need select correctly recording source

4

Select at Set Date Format, we can choose the date display format.

### 4.2.2 Time Settings

Select at Set Time, Hit PLAY

Press +/- to adjust, press ◀◀ / ▶▶ to move next. When set correctly, hit PLAY to confirm and finish setting.

Select at Set time Format, we can choose the time display format.

## 4.3 Display Settings

### 4.3.1 Backlight Timer

It can set 10seconds, 20seconds, 30seconds, always on.

When always on, the device screen will not go dark, it will consume a lot of battery power.

### 4.3.2 Brightness

It can set the brightness of the screen from 0-15

## 4.4 Sleeper Timer

OFF: close this function

Set sleep timer:

we can set at 10, 30, or 60 Minutes.

**Notice:** When this function was ON, device will

6

**External MIC:** record from external microphone

**LINE IN:** record from line in

## 3. Music

Press Play (turn on device)-> tap ↻ -> press ◀◀ / ▶▶ to select Music -> Hit PLAY, we can see all music file on the devices from here

## 4. System Settings

Press Play (turn on device)-> tap ↻ -> press ◀◀ / ▶▶ to select System Settings -> Hit PLAY, we can changes system settings for the devices

### 4.1 Language

English default. We can select for other language of the device. If, unfortunately, the device is set to the wrong language, please contact customer service. [support@evistr.com](mailto:support@evistr.com).

### 4.2 Date and Time

#### 4.2.1 Date Settings

Select at Set Time, Hit PLAY

Press +/- to adjust, press ◀◀ / ▶▶ to move next. When set correctly, hit PLAY to confirm and finish setting.

5

count down the time, and force to shut down the device when time elapsed

## 4.5 Password Set

Password switch: OFF default. When turn it on, we need to set password for the device  
Password set: input a 6 digits password. Press +/- to set the numbers. Press ◀◀ / ▶▶ to move to next.

### Note

1. If forgot password, please enter 18 18 18, and then hold ↻ button more than 3 seconds to reset the device
2. If password function is ON, when connect to computer, we need to input correct password, otherwise, it will fail connect to computer

## 4.6 Information

### 4.6.1 Disk space:

Device shows the free space and total space.

### 4.6.2 Player Information:

Device shows the firmware version and the release date.

7

#### 4.7 Factory Setting:

Restores to factory default. Very helpful if confusion arises when creating settings. Select Yes, press PLAY to confirm. Device will start to restore factory settings. When completed, it will show Restored!

#### 4.8 Format Device

**This will format the disk and erase all data on the device, so remember to back up important files before doing.**

Select Yes, press PLAY confirm. Device will start to reformat and erase all data. Wait until the device reboots and completes the process.

**Note:** Do not turn off power when formatting device. If, unfortunately, the device is mistakenly cut off, it will show as disk error.

#### To correct disk error.

Push down the power button from ON to OFF position. Connect the device to a Windows computer, and format the disk from the computer to return to normal state.

**Note:** If you are using a MAC computer, please contact our customer support. Reformatting on a MAC computer needs different options.

8

#### 5. Play Setting

When playing/paused playing recordings or music, press M button can go to play settings

##### 5.1 Play Mode

At this option, it can set at Repeat 1, Shuffle, Repeat off, Repeat All

Notice: shuffle, it will play files in random

##### 5.2 Repeat Settings

Repeat Mode: enter A-B repeat

Replay Times: set A-B repeat times

Repeat Interval: set A-B repeat interval

##### 5.3 Equalizer

It can set off, rock, jazz, classical, techno

##### 5.4 Variable Speed Playback

Set the playback speed rate from -8 to +8, higher number, faster speed. -8 rate, it means playback speed it is 8 times lower than normal

##### 5.5 Delete

Enter delete option, it can delete one, delete all.

Delete one: it will delete the file just played or paused

9

#### 5.6 Bookmarks

Add bookmarks for the file

#### Technical Parameter

Product Dimension	4.3 X 1.3 X 0.55inch (110 x 32 x 14mm)
Product Weight	73g (2.57z)
Screen Size	1.4inch, 128 x 64 LCD
USB Socket	USB 2.0 High Speed (Charging and Data Transfer)
Charging	Input < 1A 5V
Record Bit Rate	1536kpbs, 1024kpbs, 512kpbs, 128kpbs, 64kpbs, 32kpbs
Support System	Windows98 and later version, XP, Windows 7 / 8 / 10
Earphone Output	Max 10mW+ (30Ohm), Freq 20Hz - 20KHz, S/N ratio > 90db, Distortion factor 0.05%
Memory	8G / 16G / 32G (Subject to the device)
Battery	3.7V 550mAH Lion Polymer
Music Playback Battery Time	12 hours (single full charged with earbud, screensaver)
Max Recording Battery Time	Full charged, recording at 32kpbs could work 15 hours
Support Music Format	MP3 / WAV / FLAC / APE / OGG / WMA



10

#### Frequently Asked Question

##### 1) No Voice Recordings

If there is no voice recording or all recordings have been deleted, when device is turned on it will display "no voice recordings" or "no songs" on the screen. Not to worry, go ahead and press REC or M (menu).

##### 2) How to Turn Off the Record Light

Go to Menu -> Record setting ->  /  button -> Record led -> select OFF. When recording, the record light will not light up or flash.

##### 3) Disk Error

Due to static shock, like over charging, recorder cuts off its power when the formatting process doesn't complete, and device loses system firmware.

**How to Rescue:** Keep power button at OFF position, connect device to Windows computer, and format the recorder disk again. Device will be normal.

##### 4) Failed to Connect to Computer

11

Before connecting the recorder to a computer, turn off the recorder.

When connecting to a computer, do not press any buttons on the recorder or do any operations on the recorder. Otherwise, it will exit connection mode, and fail to connect to the computer. At this status, it will only charge the voice recorder.

For more failed connect to computer issues, please contact us. We will reply promptly.

### **5) Can Recordings Be Deleted from the Computer?**

Yes. When the recorder is successfully connected to a computer, find it as the removable drive name "V508." All recordings are saved in a folder named "RECORD" in the drive.

You may delete the file or copy the file onto an ordinary USB Flash Drive.