

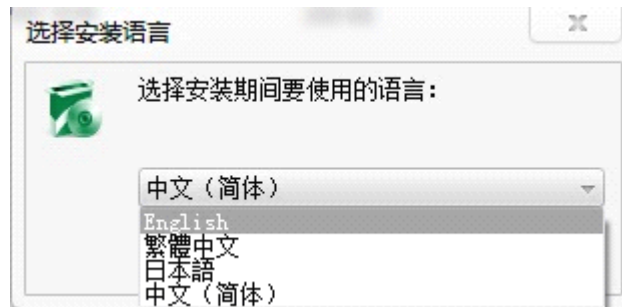
**User's Manual of
Laser Engraving Cutting Software
CorelLASER**

Chapter 1 Software installation

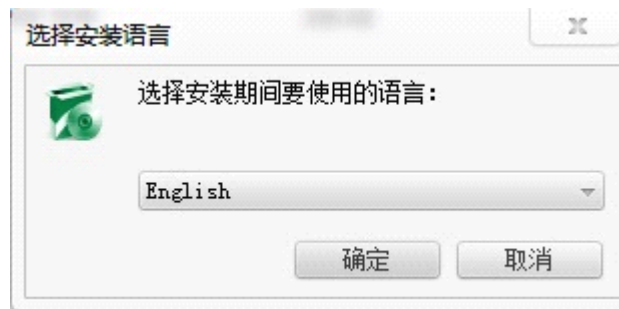
1.1 Install steps

Note: please install Coreldraw before installing our software, Coreldraw 12,X3.X4,X5 are supported; Win XP, Win 7, Win 8 are supported.

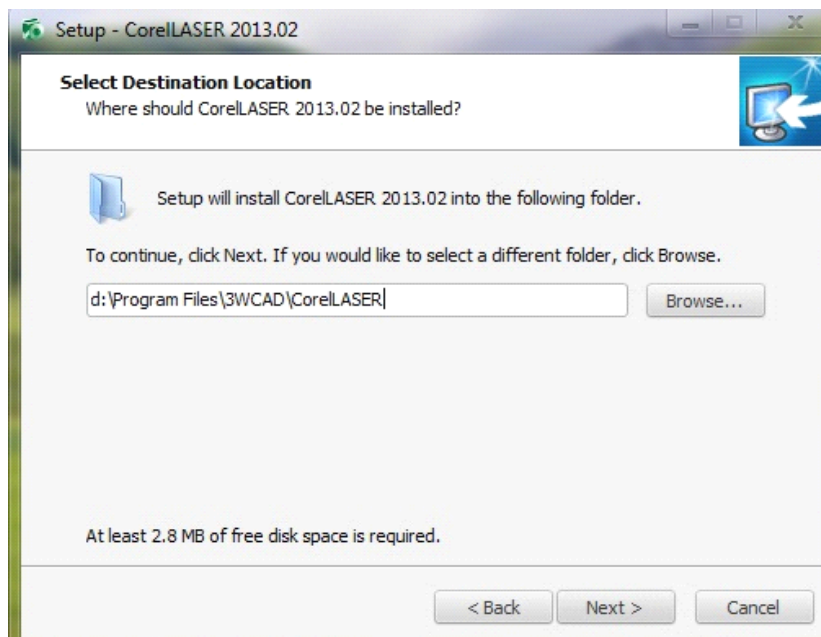
- (1) Double-click the CoreLASER.exe under the installation directory, the following dialog box appears:



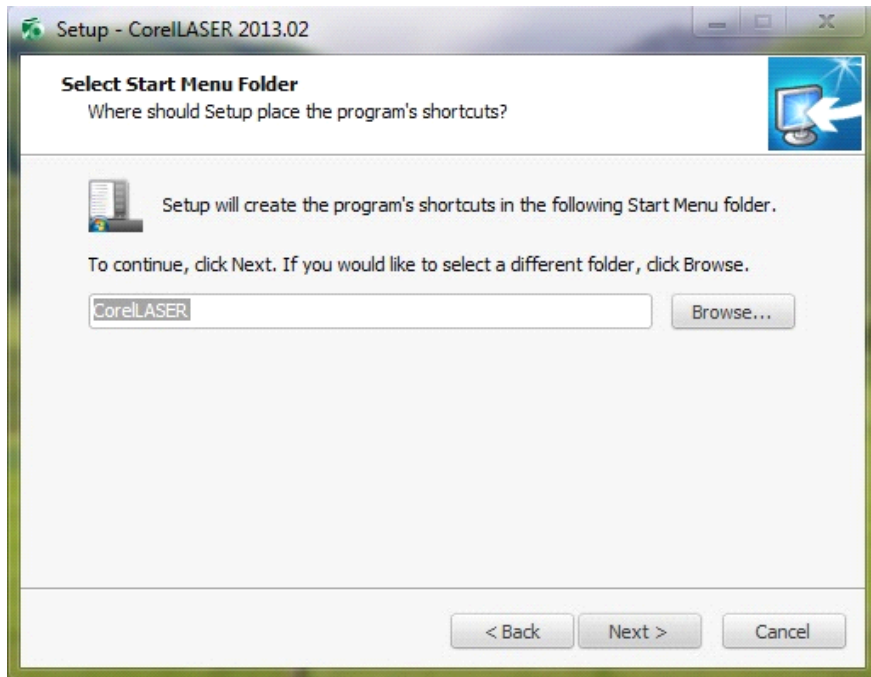
Chose English language ,



Click Next,



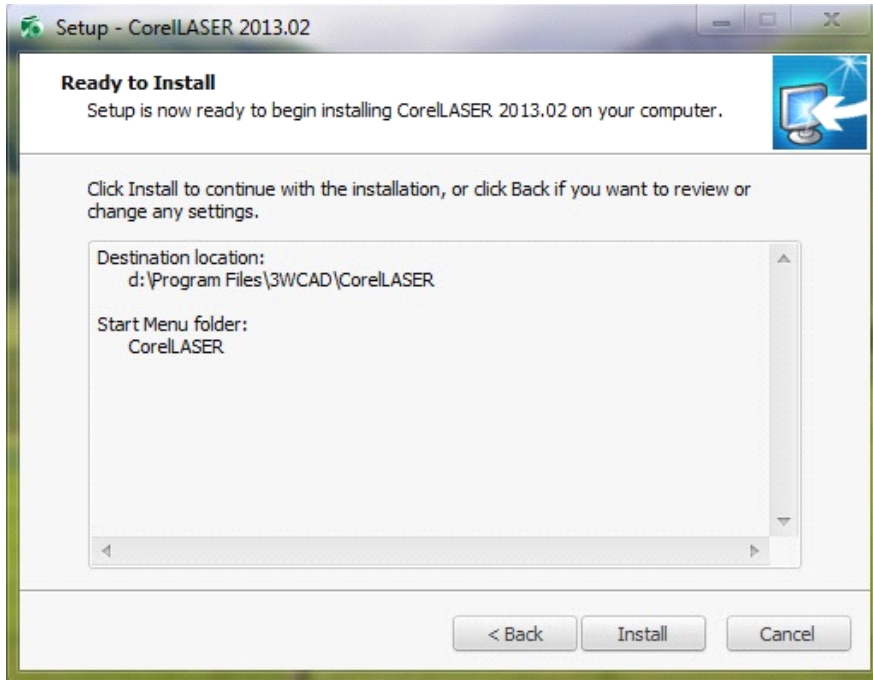
Select the installation path, we suggest d:\Program Files\3WCAD\CoreLASER ,
Then click Next,



Click Next,



Click Next,



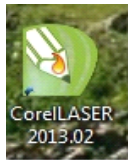
(2) Click **Install**, when extract copy is to be completed, the installation will be finished,



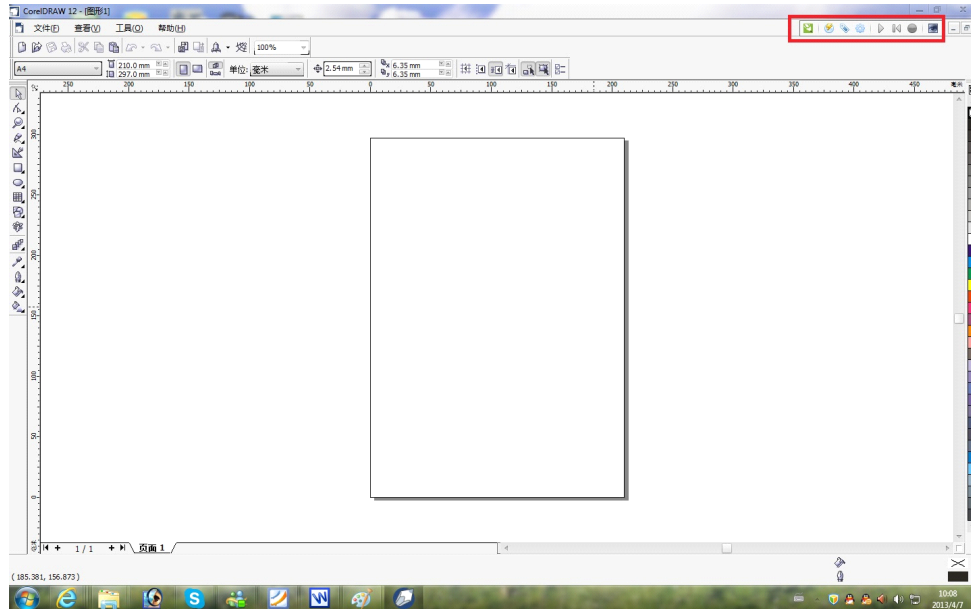
Click Finish, then the software was installed .


1.2 Engraving machine properties

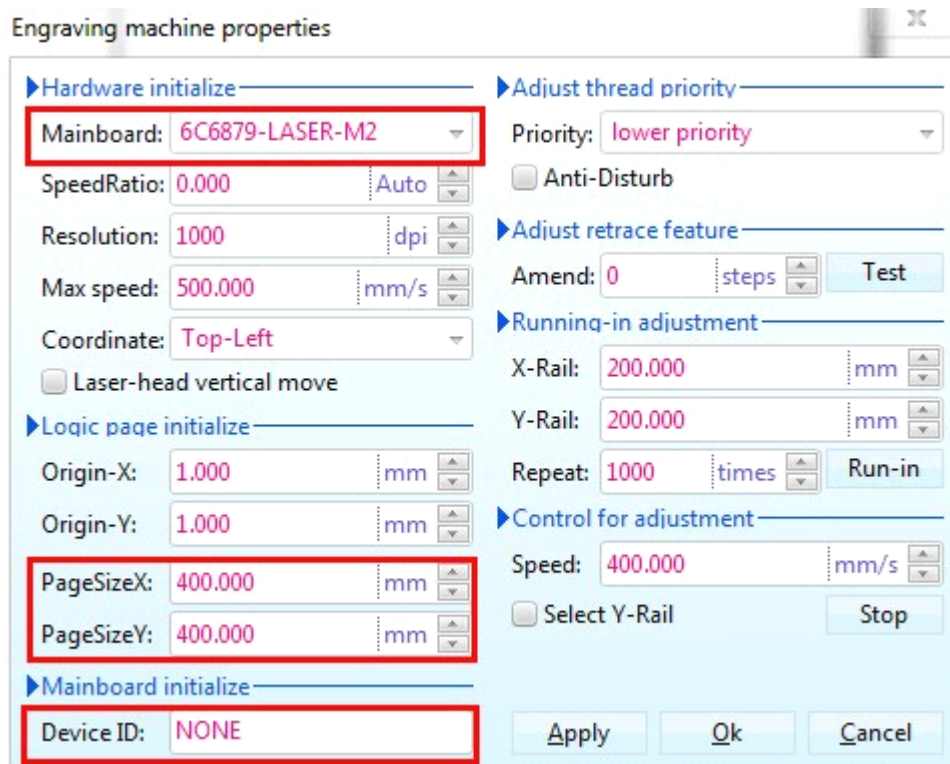
After the installation ,there will be a icon on your desktop ,as showing :



(1) Double click this icon to open the software , it will open Coreldraw , then you can see our software tool bar in Coreldraw ,as showing:



(2) Then click this button  to set Engraving machine properties ,as showing :



Here we need to set the same setting for Mainboard as the picture above showing , set PageSize according to your machine working area size,then fill the ID on mainboard into the blank of

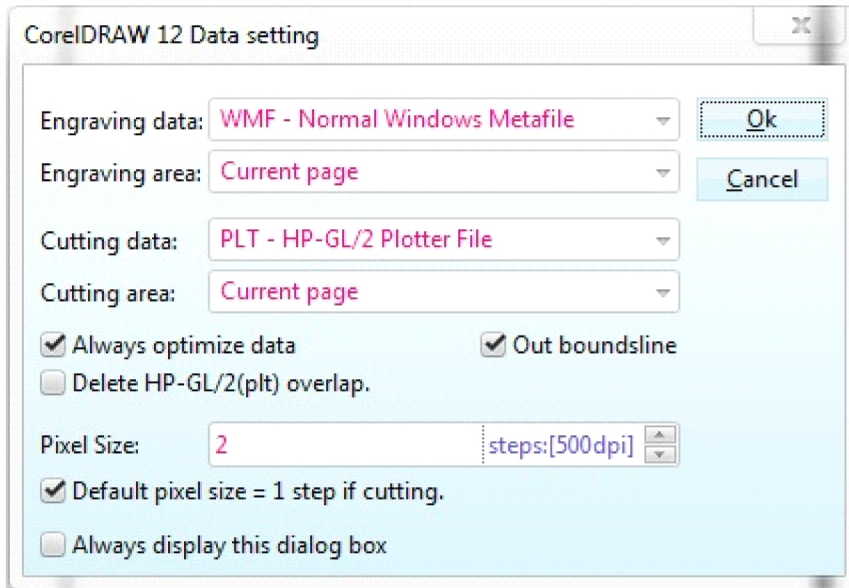
Device ID, click Apply ,click OK.

Chapter 2 Software instruction

2.1 CorelDRAW Setting



is CorelDRAW setting button, click this button, the pop-up interface is as shown:

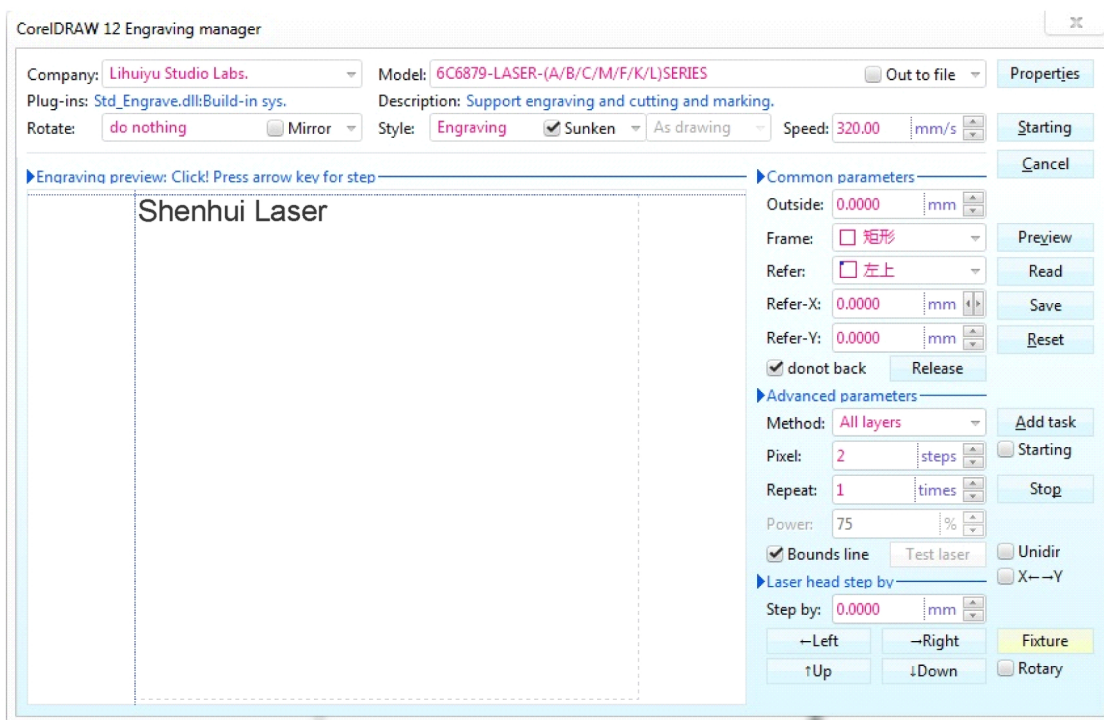


Please set the settings on Data setting interface the same as we did above.

2.2 Engraving



is Engraving button,click this button, the pop-up interface will be as shown:



CorelDRAW 12 Engraving manager

Company: Lihuiyu Studio Labs. Model: 6C6879-LASER-(A/B/C/M) SERIES

Plug-ins: Std_Engrave.dll:Build-in sys. Description: Support engraving and cutting and marking.

Rotate: do nothing Mirror Style: Engraving Sunken As drawing Speed: 320.00 mm/s Starting

There have three processing styles: Engraving,Cutting Marking

If check this function when engraving, letters will be engraved directly, otherwise ,engrave background.

Used to rotate the design.

Set the design mirror.

Working speed, set it according to the working style and material.

Output the job to machine.

Engraving preview: Click! Press arrow key for step

Shenhui Laser

The preview of the design, when drag this icon by mouse, the laser head will move at same time,this function always used for setting Working Origin.

Common parameters

Outside: 0.0000 mm

Frame: 矩形

Refer: 左上

Refer-X: 0.0000 mm

Refer-Y: 0.0000 mm

donot back Release

Cancel Preview Read Save Reset

Select the shape of frame.

Leave a Margin.

Preview the working

Read the saved settings

Save the current settings,include Speed ,Common parameters and Advance parameters

Reset Origin point

Release motor ,then we can move laser head easily by hands without damage .

Check this ,laser head will stay there after finish the job.

Relative position of laser head

X coordinate of laser head

Y coordinate of laser head

Has two options :Dialog and All layers. When there has more than one task ,if we check Dialog, if will wait for continue after each task, if we check All layers ,it will do all tasks one by one without stop.

For engraving ,we set it 2 steps ,for cutting ,we set it 1 step.

Repeat the jobs

Laser head moving distance by one step .

Add a new task

If check it ,laser will be shooting only in one way.

If check it,laser head will move up and down when engraving.

Enable rotary

2.3 Cutting



is cutting button, click it the pop-up interface is as shown.

CorelDRAW 12 Engraving manager

Company: Lihuiyu Studio Labs. Model: 6C6879-LASER-(A/B/C/M/F/K/L)SERIES Out to file Properties

Plug-ins: Std_Engrave.dll:Build-in sys. Description: Support engraving and cutting and marking. Starting

Rotate: do nothing Mirror Style: Cutting Nearest As drawing Speed: 20.32 mm/s Cancel

Engraving preview: Click! Press arrow key for step

Shenhui Laser

Common parameters

JoinGap: 0.0000 mm Preview

Frame: 矩形 Read

Refer: 左上 Save

Refer-X: 0.0000 mm Reset

Refer-Y: 0.0000 mm

donot back Release

Advanced parameters

Method: All layers Add task

Pixel: 1 steps Starting

Repeat: 1 times Stop

Power: 75 %

Bounds line Test laser Unidir

Laser head step by X--Y

Step by: 0.0000 mm

Left Right Fixture

Up Down Rotary