



Gourmia

MODEL#GBQ330

GRILL PRO
PORTABLE
SMOKELESS BBQ



© 2017 Gourmia
www.Gourmia.com
The Steelstone Group
Brooklyn, NY

All rights reserved. No portion of this manual may be reproduced by any means whatsoever without written permission from The Steelstone Group, except for the inclusion of quotations in a media review.

Although every precaution has been taken in the preparation of this manual, The Steelstone Group assumes no responsibility for errors or omissions. Nor is any liability assumed for damages resulting from the use of the information contained herein. Although every effort has been made to ensure that the information contained in this manual is complete and accurate, The Steelstone Group is not engaged in rendering professional advice or services to the individual consumer; further, The Steelstone Group shall not be held responsible for any loss or damage allegedly arising from any information or suggestion in this manual.

Printed in China



TAKE YOUR GRILLING GAME TO NEW PLACES WITH THIS SIMPLE **SMOKELESS** WONDER

There's nothing like the smoky, savory goodness of a burger freshly grilled on a charcoal barbecue. Now with the incredible portable Grill Pro Smokeless BBQ, everyone can enjoy that fiery finish without the pesky smoke or stress!

Our travel-friendly grill comes ready with a small charcoal box, 11.8" grilling surface, lifting tongs, removable ignition plate, easy-clean drip tray and carrying bag.

Turn the dial, and the built-in battery-operated fan regulates temperature with pinpoint precision.

Thank you for your purchase! We hope you will enjoy all the innovative products brought to you by our family at Gourmia.

Grill Pro
SMOKELESS PORTABLE BBQ



SAFETY FIRST / P. 6

INTRODUCTION TO THE GOURMIA KITCHEN MACHINE / P. 8

Product Specs / P. 8

Product Features / P. 9

USING THE GRILL PRO SMOKELESS BBQ / P. 10

Step By Step Instructions / P. 11

CLEANING AND CARE / P. 12

Seasoning Your Cast Iron Grill Plate / P. 13

WARRANTY & SERVICE / P. 14

Warranty & Service / P. 15

IMPORTANT SAFEGUARDS

Disclaimer:

Read these instructions carefully even if you are familiar with the equipment. Following these important safety rules and operation guidelines will reduce the risk of fire, electric shock and injury. Manufacturer/importer advisory board are not responsible for improper use due to instruction manual negligence or failure to follow directions. Before starting up the machine, ensure you are in compliance with all the basic safety precautions included in this user's manual. It is important to understand the equipment's proper usage and limitations in order to avoid potential dangers.

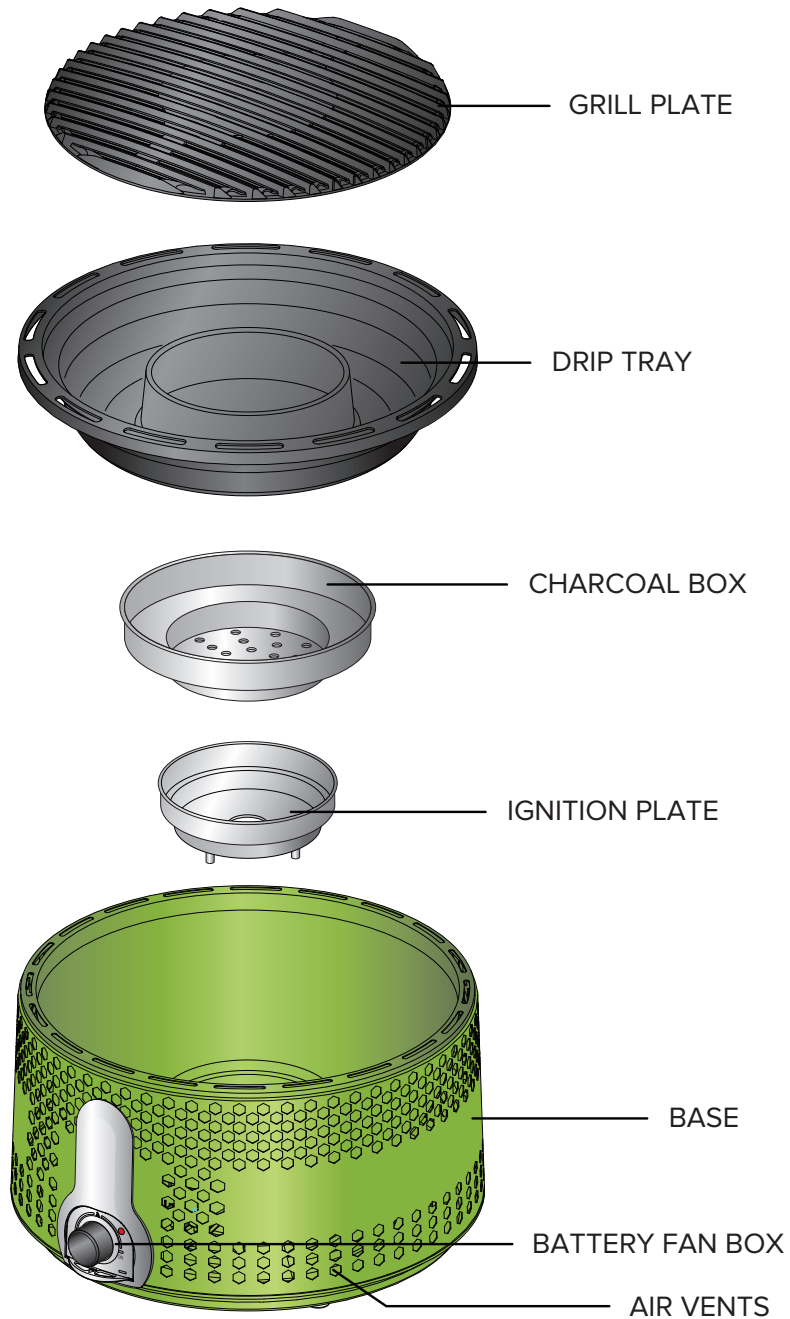
READ ALL SAFETY & USAGE INSTRUCTIONS BEFORE USING

- Keep this device out of reach of children or unqualified persons, since the misuse of contents and packaging materials may result in hazard or death.
- **Scorching and Burns:** Refrain from touching hot surfaces or water content while the device is in use. Instead, use handles or knobs as needed.
- To protect against risk of electrical shock do not put battery fan box in water or other liquid.
- Close supervision is necessary when any appliance is used by or near children.
- Make sure appliance is OFF when not in use, before putting on or taking off parts, and before cleaning.
- Avoid contact with moving parts.
- Do not operate any appliance after the appliance malfunctions, or is dropped or damaged in any manner. Return appliance to the nearest authorized service facility for examination, repair or electrical or mechanical adjustment.
- The use of attachments not recommended or sold by the manufacturer may cause fire, electric shock or injury.
- Do not leave appliance unattended while it is operating.
- Do not use this appliance for other than its intended use.
- Do not block the air outlet.
- Keep the unit on a flat surface while grilling.
- Do not touch the grill plate or rack while grilling, or while it's still hot.

KEEP THESE INSTRUCTIONS FOR FUTURE REFERENCE!



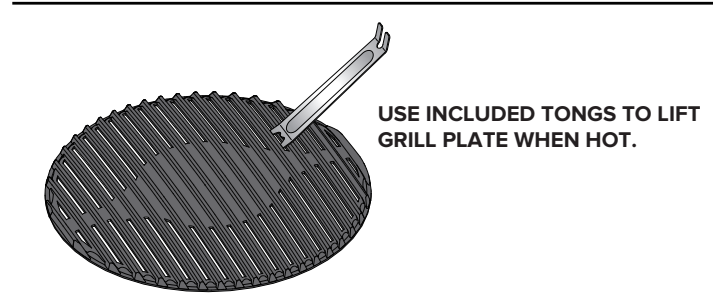
GRILL PRO SMOKELESS BBQ PRODUCT SPECS



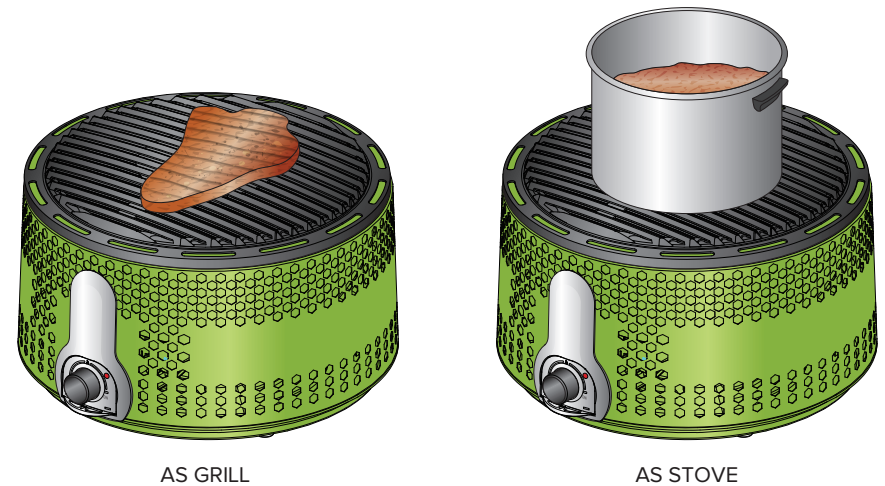
GRILL PRO SMOKELESS BBQ PRODUCT FEATURES

1. Easy and quick fire start up and temperature control with smart turbo fan structure.
2. Non-stick coated grill plate ensures that no residue remains on the grill.
3. Unique charcoal box design eliminates the dripping of fat and seasonings onto the charcoal.
4. Portable product design for convenient carrying and storage.
5. Easy to clean parts keeps grilling hassle free.

LIFTING TONG USAGE:



MULTI-USE GRILL RACK:

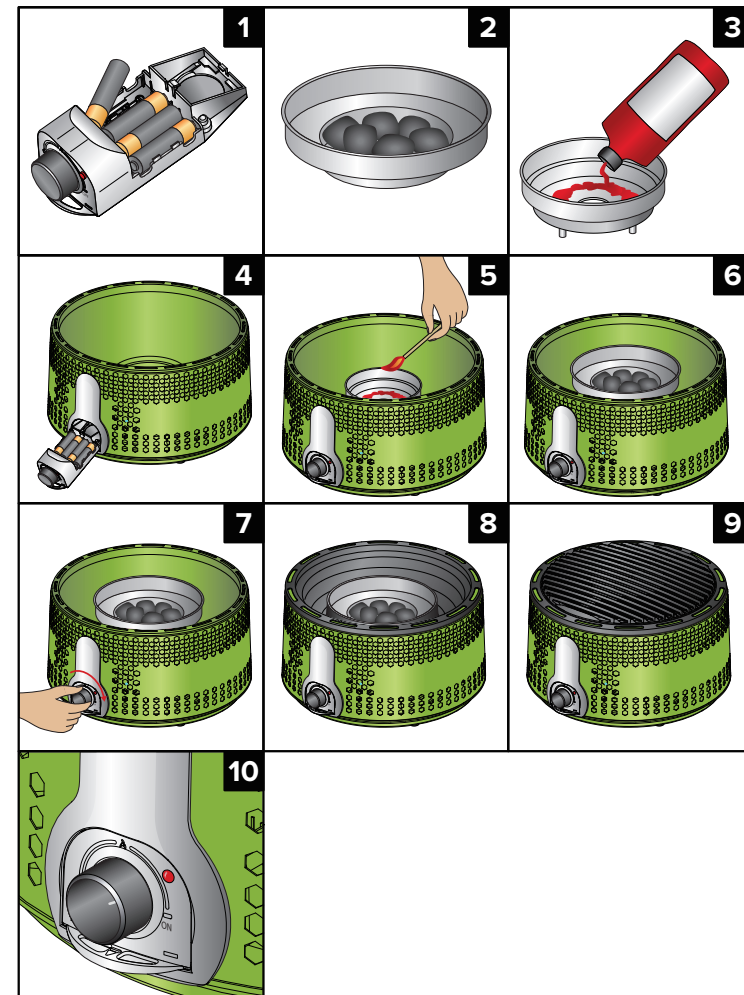




USING THE GRILL PRO SMOKELESS BBQ

WARNING: This product is intended for outdoor use only!

1. Place 4 AA batteries inside the battery fan box (PIC.1)
2. Fill the charcoal box with charcoal (PIC.2)
3. Pour fire starter gel on the ignition plate in a circle (PIC.3)
4. Insert the battery fan box into the plastic slot on the base (PIC.4)
5. Light the fire starter gel (PIC.5)
6. Put charcoal box over the ignition plate (PIC.6)
7. Turn the knob to the maximum position (PIC.7)
8. Put the drip tray into the base (PIC.8)
9. Place the grill plate on top of the base (PIC.9)
10. You can now control the temperature using the fan knob (PIC.10)





CLEANING AND CARE

Seasoning your cast iron grill plate:

Seasoning is merely oil baked onto the iron, giving it a natural, non-stick coating. Any food-safe cooking oil/shortening such as vegetable or canola oil will work for preserving your grill plate. The more you use your grill, the better; this is the best way to maintain the seasoning on the grill plate. If your grill plate becomes gray, rusty, dull, or splotchy, it is time to re-season.

Just follow these easy steps:

1. Scrub well with hot soapy water
2. Dry thoroughly with a cloth
3. Spread a thin layer of food-safe cooking oil/shortening.
4. Place it in the middle oven rack at 375°F (place foil on lower rack to catch drippings) for 1 hour.
5. Allow your grill plate to cool and reassemble with your GBQ330

To clean your cast iron grill plate:

1. To clean use a stiff brush, a plastic scrubber, or kosher salt. Never use soap unless before seasoning. Always dry thoroughly with a cloth after washing.
2. After drying, rub a bit of food-safe cooking oil on the grill plate and heat it for a few minutes on very low heat. You can use either your grill or an oven.
3. Allow your grill plate to cool and reassemble with your GBQ330



WARRANTY & SERVICE

This product is guaranteed under the premise of a 1 year limited warranty period, applicable to the original purchaser and not transferable to a third party user.

Repair or replacement of defective parts are at the seller's discretion. In the event that repair isn't possible, the seller will replace the product/part. If product repair/ replacement won't suffice, the seller has the option of refunding the cash value of the product or component returned.

Product defects not covered under the warranty provisions include normal wear and damage incurred from use or accidental negligence, misuse of instruction specifications, or repair by unauthorized parties. The manufacturing company is not liable for any incidental or consequential damages incurred by such circumstances

For Customer Service or Questions, Please call: 03332205031

Gourmia

www.gourmia.com



Gourmia[®]

www.gourmia.com