

# Matter and Form 3D Scanner User Manual

# Table of Contents

Our Roots .....	2
Legal & Safety Stuff .....	3
Laser Stuff .....	4
Inside the Box .....	5
<b>Getting Started .....</b>	<b>6</b>
Connecting the Scanner.....	7
Using the Software .....	8
Calibrating the Scanner.....	9
Preparing to Scan in Windows.....	12
Preparing to Scan in Mac.....	16
Rotating, Zooming In and Panning .....	20
<b>Doing More with the Scanner .....</b>	<b>21</b>
Saving and Exporting a Scan .....	22
Cleaning a Scan .....	23
Cleaning Scans in Windows.....	23
Cleaning Scans in Mac.....	29
Auto Clean .....	30
Layers.....	31
Cropping.....	32
Brush Cleaning.....	33
Final Steps .....	34
Combining Scans .....	36
<b>The Basics of 3D Scanning .....</b>	<b>39</b>
How Our 3D Scanner Works .....	40
The Importance of Calibration .....	40
What Happens During a Scan.....	41
Problem Materials and Surfaces .....	41
Single-Color vs. Multi-Color Scanning.....	42
The Importance of Lighting .....	42
<b>3D Scanner Terms .....</b>	<b>43</b>
File Format Information.....	44
Point Cloud Basics .....	45
Octree, Degree & Samples Per Node .....	46
<b>Advanced Scanning .....</b>	<b>49</b>
Introduction.....	50
Mac vs. Windows .....	50
Advanced Scanning for Windows .....	50
Cam Feed Tab.....	50
Laser Line Detection Tab.....	51
Manual Control Tab.....	51
Color Detection .....	52
Example 1: Picking the best exposure for color .....	54
Example 2: When the choice isn't clear .....	55
Laser Detection .....	56
Example 3: Picking the Best Laser Exposure .....	57

Example 4: Picking the best laser exposure .....	58
High Contrast Scanning.....	59
How Do I Identify High Contrast Objects?.....	59
Example 5: Setting High Contrast Laser Detection Exposure .....	60
The Best of Two Exposures.....	61
Scanner Tab.....	62
Bed Resolution .....	62
Head Step Resolution .....	63
Advanced Scanning for Mac .....	64
Preferences.....	64
Manual Scan Settings.....	64
Camera Exposure .....	65
Setting the Lasers .....	67
Example 6: Adjusting Laser Exposure in Mac – Low Contrast.....	67
Setting the Lasers – Con’t.....	69
Example 7: Adjusting Laser Exposure in Mac – High Contrast.....	69
Bed Rotation .....	72
Head Step Resolution .....	72
<b>Troubleshooting .....</b>	<b>73</b>
Introduction.....	74
Bad Lighting .....	75
Calibration .....	77
Inadequate Exposure and/or Missing Points .....	78
Errant Points and/or Background Noise.....	79
Black or Missing Scans .....	80
Mesh Appears Wrinkled .....	81

Manual publication update date: December 14, 2015



amazon.com

Amazon's #1 3D Scanner

**TC** TechCrunch

"Can stand up to the big boys in 3D scanning"



"A good companion for a 3D printer"



CES 2015 Innovation Awards Honoree

## Our Roots

We are designers and programmers from Toronto who needed a high-res 3D scanner but couldn't afford one, so we built our own. Determined to help others enhance their creative, professional and recreational lives, we launched a record-breaking Indiegogo campaign backed by designers, architects, hobbyists, gamers, teachers and creative families.

At the heart of our scanner's technology is a high-definition camera that produces accurate, detailed color scans at resolution qualities that match or top what more expensive scanners can achieve. It works with almost any 3D printer or online printing service, supports Windows and Mac OS, and allows users to scan solid items to create basic scans quickly and with little effort. It is also capable of exporting intricate, high-resolution, 3D representations for use in any number of digital 3D applications.

## Legal & Safety Stuff

These instructions provide important information concerning the proper operation of the product. Only use this product after carefully reading the operating instructions included with the product and all warnings and labels on the product packaging, including the manual and any separately included sheets. Only use this product with the included accessories and the included power adapter. Do not use this product or any Matter and Form Inc. online services for purposes that could infringe on the intellectual property of a third party. Matter and Form Inc. assumes no responsibility whatsoever with regard to the infringement of intellectual property through use of the Matter and Form 3D Scanner or Matter and Form Inc. online services. The MFS1V1 3D Scanner comes with a limited one-year warranty, in addition to any warranties mandated by local laws. Details of the one-year limited warranty can be found at <https://matterandform.net/legal>

Matter and Form Inc.  
442 Dufferin St., Suite A  
Toronto, Ontario  
Canada, M6K 2A3

Please note the following important safety instructions:

- Do not operate this product if it is damaged, or if the power cable or USB cable are damaged or if any of its internal features are exposed.
- Only use the cables and power adapters provided with the scanner. If you require a replacement, please contact Matter and Form Inc. at [support@matterandform.net](mailto:support@matterandform.net)
- Do not operate the product when wet. If it should become wet, do not turn it on. Disconnect it from its power source and do not operate it until completely dry.
- Do not touch the camera lens, laser lenses or laser housing.
- If your product requires maintenance or repair, contact Matter and Form Inc. at [support@matterandform.net](mailto:support@matterandform.net). Do not attempt to open or repair the product on your own, as it may be hazardous and will void your warranty.

### FCC Class B Notice

This device complies with Part 15 of the FCC Rules. Operation is subject to the following two conditions:

1. This device may not cause harmful interference.
2. This device must accept any interference received, including interference that may cause undesired operation.

Note: This equipment has been tested and found to comply with the limits for a Class B digital device, pursuant to Part 15 of the FCC Rules. These limits are designed to provide reasonable protection against harmful interference in a residential

installation. This equipment generates, uses and can radiate radio frequency energy and, if not installed and used in accordance with the instructions, may cause harmful interference to radio communications. However, there is no guarantee that interference will not occur in a particular installation. If this equipment does cause harmful interference to radio or television reception, which can be determined by turning the equipment off and on, the user is encouraged to try to correct the interference by one or more of the following measures:

- Reorient or relocate the receiving antenna.
- Increase the separation between the equipment and receiver.
- Connect the equipment into an outlet on a circuit different from that to which the receiver is connected.
- Consult the dealer or an experienced radio/television technician for help.

You may also find helpful the following booklet, prepared by the FCC: “How to Identify and Resolve Radio-TV Interference Problems.” This booklet is available from the U.S. Government Printing Office, Washington D.C. 20402.

Modifications: Any modifications made to this device that are not approved by Matter and Form Inc. may void the authority granted to the user by the FCC to operate this equipment.

## Laser Stuff

“Complies with FDA performance standards for laser products except for deviations to Laser Notice NO-50, dated June 24 2007. Class 1 laser product classified under IEC60825-1:2007.”

Class 1 Laser Product  
Classified 60825-1 2007

Produit Laser de Classe 1  
Classé 60825-1 2007

Laser-Produkt Der Klasse 1  
Klassifiziert 60825-1 2007

Producto Láser de Clase 1  
Clasificado 60825-1 2007

Prodotti Laser di Classe 1  
Classificata 60825-1 2007

## Inside the Box

Thank you for purchasing the Matter and Form 3D Scanner.

Included in your box, you'll find:

1. One (1) Matter and Form 3D Scanner
2. One (1) AC Power Adapter
3. Four (4) Interchangeable Power Adapter Plugs (set of 4 international)
4. One (1) USB B Cable
5. One (1) Calibration Box
6. Set-up Manual
7. Electronics Documentation

The scanner also features a removable plug in the center of the turntable bed. Removing the plug reveals a standard camera threaded socket that users can use to attach a tripod mount for holding objects in place.

To begin scanning, continue on to the section entitled, "Getting Started" (p. 6).

# Getting Started

## Connecting the Scanner

Once the scanner and accessories have been unboxed, the first step is to connect the scanner to your computer by following the connecting instructions in the Set-up Manual or the following:

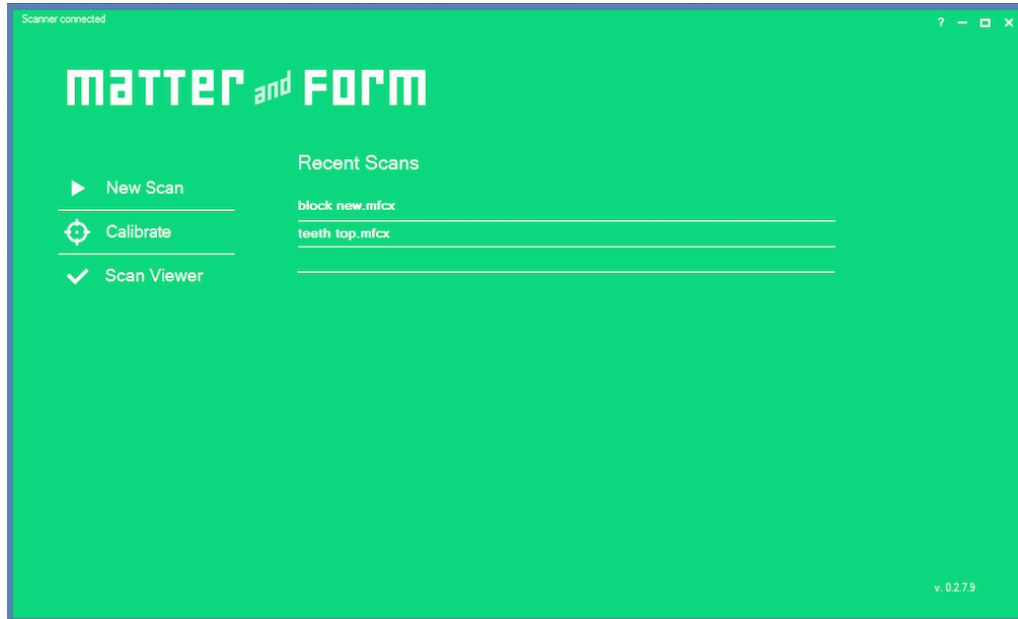
1. Plug the USB Type A connector end into the computer;
2. Plug the USB Type B connector end into the scanner;
3. Connect the power cable to the scanner and plug the power cable into a surge protector;
4. Download the software from [www.matterandform.net/download](http://www.matterandform.net/download). **Important:** Make sure to download the appropriate software for your computer;
5. Follow the setup wizard and complete the install process;
6. Open the scanner by gently depressing the release button on the top of the scanner and swing it open, revealing the scanner head and the turntable. Turn the handle 90° until it locks in place as the scanner leg.
7. Power the scanner on. To do so, push the MF logo on the lower front of the scanner until it lights up;
8. Open the software. The software will search and detect the scanner. Once it does, you're ready to start!

Before you perform your first scan, you must calibrate your scanner. Go to "Calibrating the Scanner" (p. 9) for step-by-step instructions and "The Importance of Calibration" (p. 40) for more detail on how this process works.

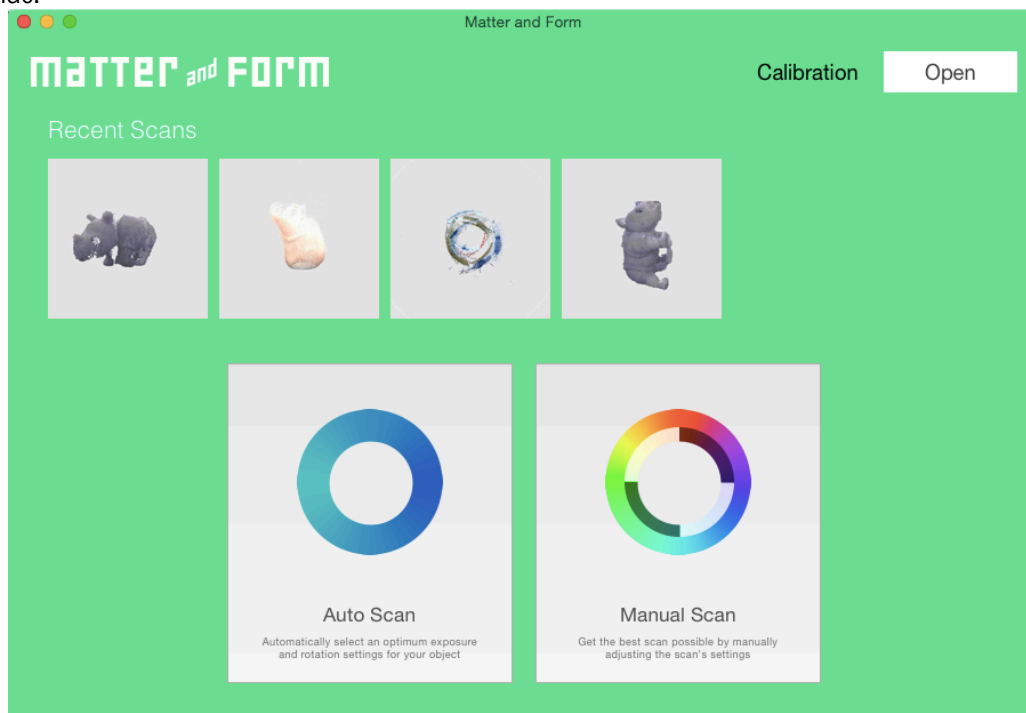
## Using the Software

From the Matter and Form software homepage, users can select to create a new scan, open recent scans, calibrate the scanner or open the scan viewer.

On Windows:



On Mac:

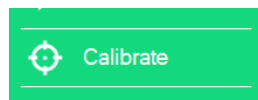


## Calibrating the Scanner

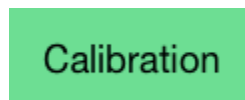
Calibrating the scanner may be the single most important step to take in order to get good results. Calibrating your scanner on a regular basis ensures that you get the most accurate results from your scan. To calibrate:

1. Make sure your scanner is connected to your computer and powered on.
2. Open the Matter and Form scanner software.
3. There are three options on the left on the start screen. Click "Calibrate" to start the calibration process.

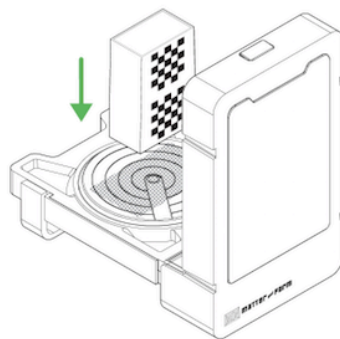
On Windows:



On Mac:



4. A new screen will open.



### Calibration Step 1

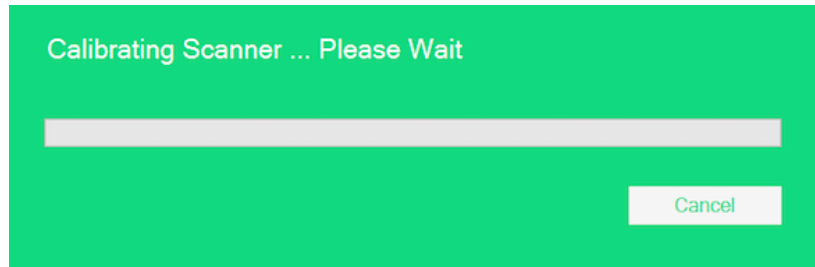
Please place the calibration box in the center of the turntable as shown in the picture (box open end down), and click "Continue Calibration".

Cancel

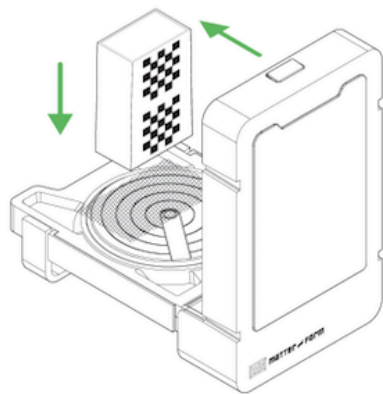
Continue Calibration

Follow the diagram above and place your calibration box in the center of the scanner bed. Click "Continue Calibration".

- The scanner will rotate the calibration box left and right on the turntable, firing its lasers and collecting a range of data. Please be patient. This process can take several minutes.



- Once the first step of calibration is done, follow the instructions for Calibration Step 2 and move the calibration box forward or back. Click "Continue Calibration" when the box is in its new position.

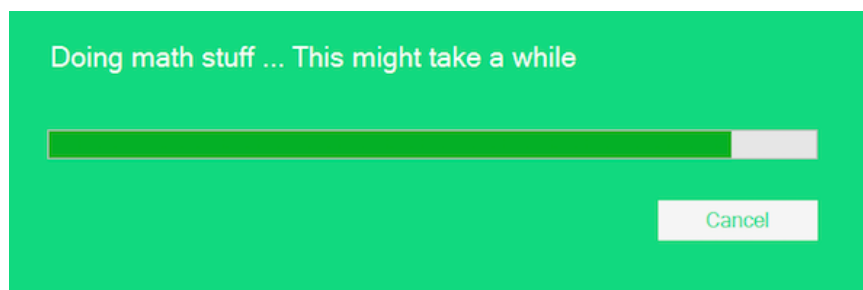


#### Calibration Step 2

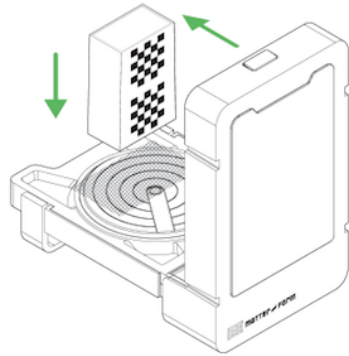
Please place the calibration box in a slightly different position. Either away or toward the camera about 1 inch from it's last position (See photo). Again, please make sure the box opening is facing down, and click "Continue Calibration".



- The scanner will rotate and fire its lasers again. Be patient and avoid moving the box. Step 2 will take slightly longer than Step 1 as the software compares the data between Step 1 and Step 2.



8. If your calibration is interrupted or fails, an error message should appear. Here are a few examples of the possible error messages one could see:



#### Where's the box?

The scanner couldn't find the calibration box. Please position the calibration box as shown in the picture (pattern facing the camera), and click "Continue Calibration".

Cancel

Continue Calibration

#### Calibration Failed



Chessboard pattern of calibration box is not facing the camera. Please reposition and retry calibration.

Exit

#### Calibration Failed



There was an error processing your calibration. Please restart the program and try again. If this error persists, please contact customer support through the help menu.

Exit

#### Calibration Failed



Can not calibrate due to low lighting conditions. Please re-try in a brighter room.

Exit

If you receive any of the above Calibration Failed messages, try the action suggested in the message and try to calibrate again.

If a step in calibration takes longer than 30 minutes, stop the calibration and try again or contact [support@matterandform.net](mailto:support@matterandform.net) for tips and assistance.

9. If it's successful, you'll see the following message:

#### Amazing!

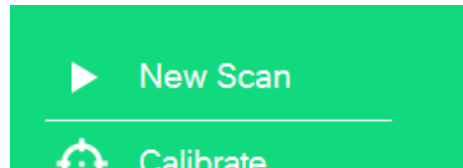
The scanner calibrated nicely! Looks like you're good to go.

Exit

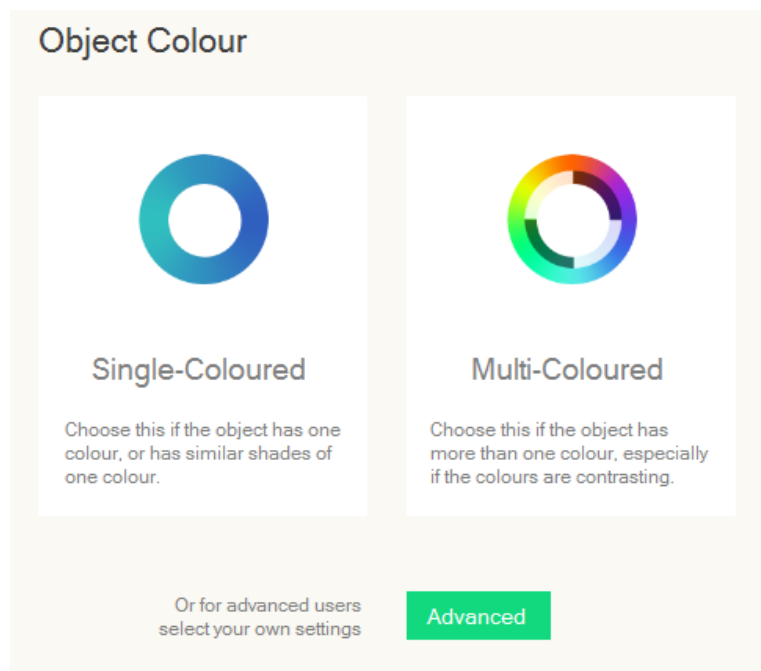
Congratulations! You are now ready to start scanning!

## Preparing to Scan in Windows

1. Click on “New Scan” to begin.



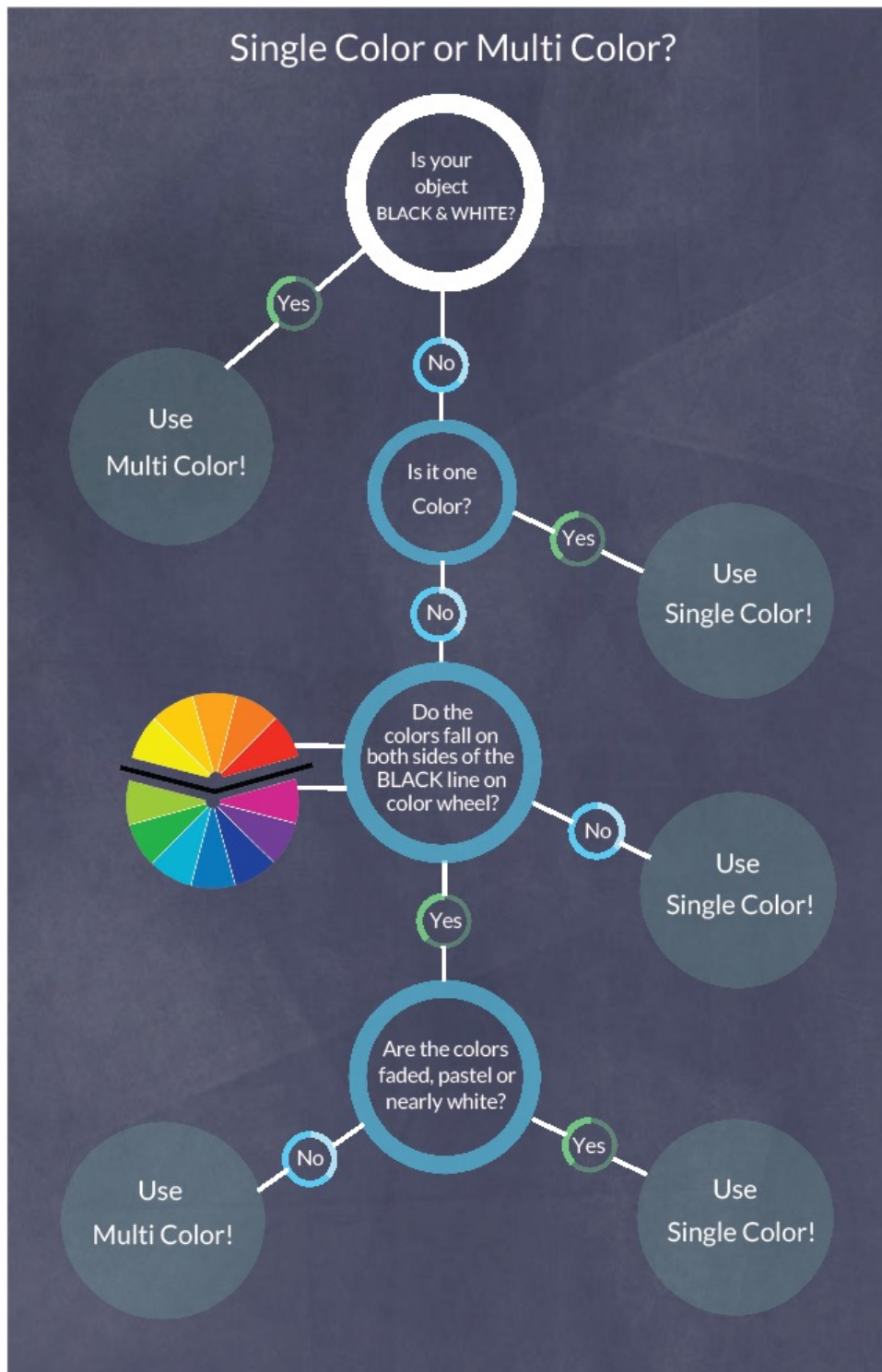
2. Select Object Color Options - The software will now give you a choice of object color options: Single-Colored, Multi-Colored or Advanced.



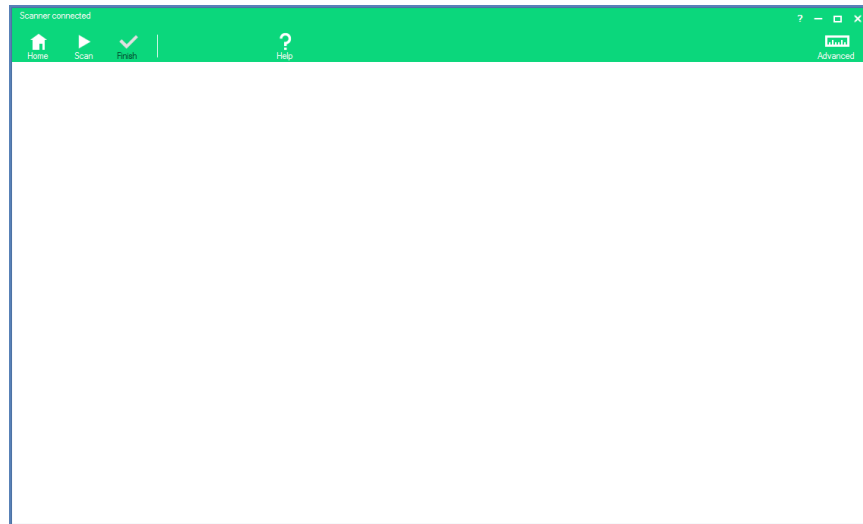
Single-Colored and Multi-Colored are both automatic settings while Advanced opens manual controls.

Most users will find that the automatic settings of the scanner are more than adequate for their scanning purposes. For very complex objects or lighting conditions, or for specialized results, users can select the Advanced button to access tools to manually adjust scanner settings. More information on Advanced settings can be found in Advanced Scanning (p. 49).

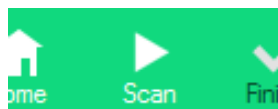
To figure out whether one should pick the Single-Colored or Multi-Colored option, use the following chart:



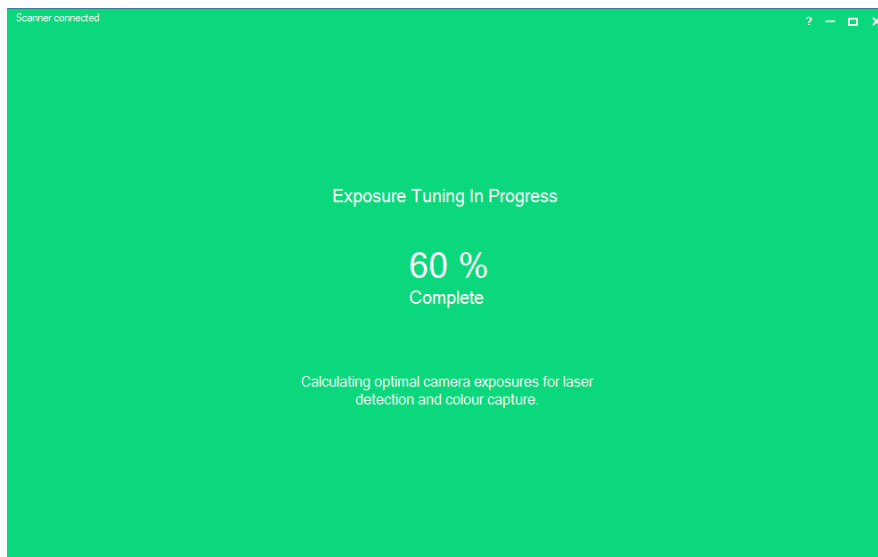
3. Click on your selection.
4. The scan viewer screen will open. Place your object on the scanner bed.



5. Click the “Scan” button, located at the top left.



If you selected “Single-Colored”, the scanner will now tune for lighting, object shape and object color. Skip to Step 10.

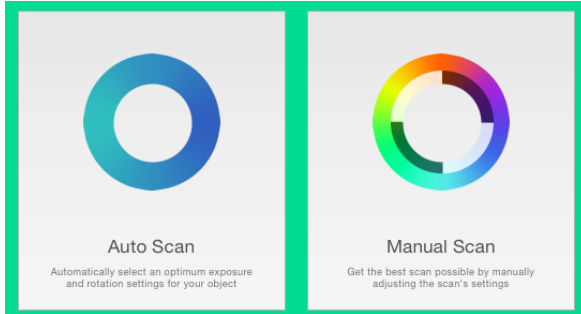


If you selected “Multi-Colored”, the Scan Viewer will show you the camera feed of the scanner bed. The laser that tunes for lighter colors and the red spectrum colors of the color wheel will flash on.

6. Looking at the camera feed, position the object so that the laser line passes over the lighter colored area by using the Rotate Right or Rotate Left buttons provided on screen or moving the object by hand.
7. Click “Confirm Lightest Color”. The software will conduct the tuning process to determine the best exposure for the light colored area.
8. Repeat Step 6 for the darker or blue spectrum colored area of the object.
9. Click “Confirm Darkest Color”. The software will conduct the tuning process to determine the best exposure for the dark colored area.
10. Once tuning is complete, scanning will automatically start. Sit back and relax as the scanner does the rest!
11. If you want to stop the scan for whatever reason, click on the “Finish” button. You will have the option of saving the scan “as is”, quitting the scan without saving and resuming the scan.

## Preparing to Scan in Mac

1. To perform a simple scan place an object on the scanner bed and, from the Home screen, click on either Auto Scan or Manual Scan.



*Auto Scan is an automatic setting where the software detects the ideal camera exposure and the amount the bed moves as it rotates.*

*Manual Scan allows users to customize settings. Use when scanning objects that have contrasting colors, or objects that are complex in shape or when scanning in complex lighting conditions.*

To determine if whether an object has contrasting colors for scanning, use the following chart:

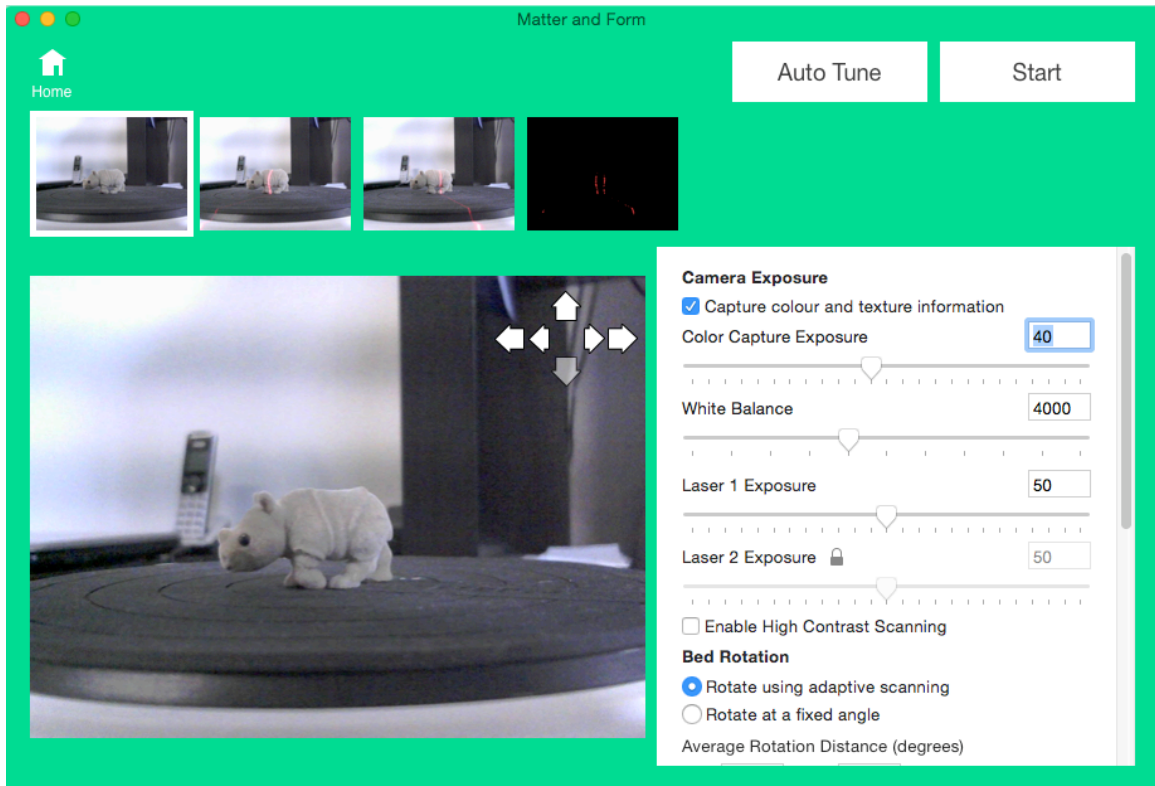


If the object can be Auto Scanned, the scanner will determine optimal exposure. Skip to Step 9.

If the object has contrasting colors, continue below.

Clicking on Manual Scan also gives Mac users access to Advanced settings. More information on Advanced settings can be found in Advanced Scanning (p. 49).

2. The Manual Scan window will open.

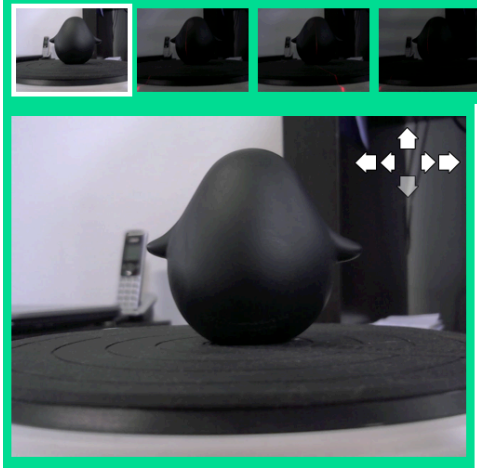


Rolling a mouse over the four view screens at the top of the page will reveal, from left to right: Color Exposure, Laser 1 Exposure, Laser 2 Exposure, and Combined Results. Clicking on the small views will enlarge the view in the main window.

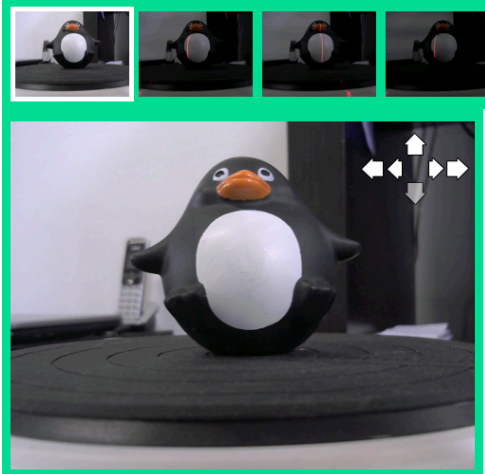
3. Click "Enable High Contrast Scanning" to activate Laser 2 exposure.

Enable High Contrast Scanning

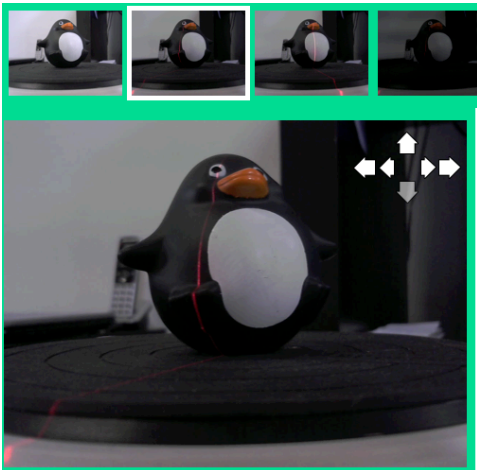
4. Line up your object on the bed so that the contrasting colors on the object are being hit by the lasers. This example uses a toy penguin.



*The lasers will be only capture the dark side of the penguin.*

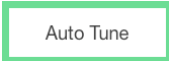


*Better but not enough of the black parts of the penguin are being hit by the laser as you can see in the windows above showing laser 1 and laser 2.*

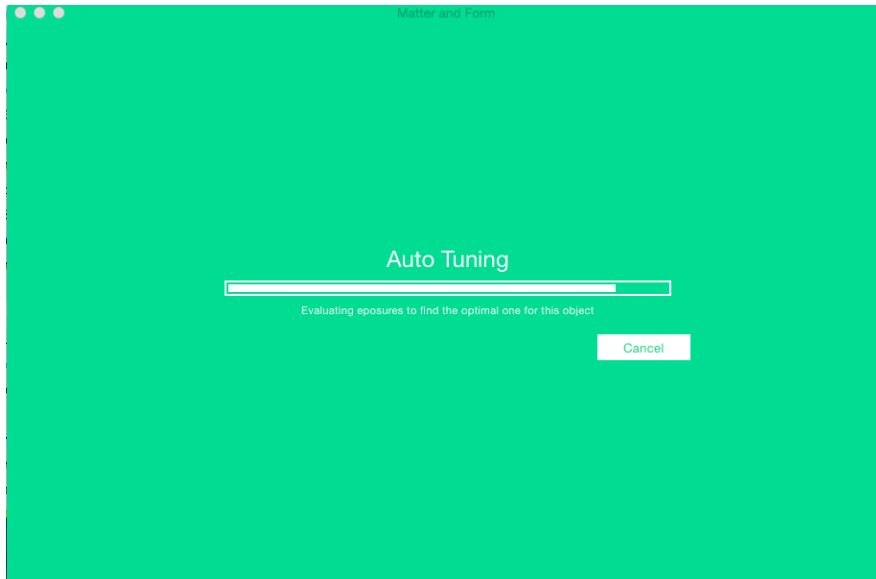


*Ideal placement. One laser is hitting mostly black and the other laser is hitting mostly white.*

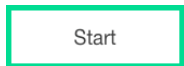
5. Once the object is placed ideally, click “Auto Tune”.



6. The Auto Tuning window will open.

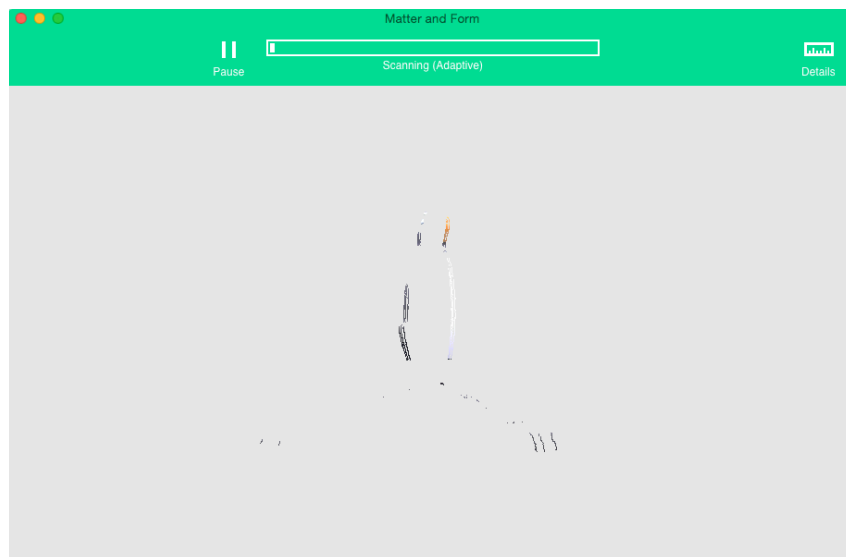


7. Once Auto Tuning is finished, click “Start”.



8. The scanner head will move into position.

9. The scanning window will open and scanning will start. Sit back and relax as the scanner does the rest!



10. If you wish to stop the scan for whatever reason, click "Pause" near the progress bar. You will have the option to resume scanning or finish the scan with an option to save the scan or not.

## Rotating, Zooming In and Panning

Users can rotate, zoom in or move the scan on the screen (i.e. pan) to get a better view. These controls are available anytime and do not affect the scan in progress.

To SPIN your model:

Click and drag anywhere in the view window to rotate your model.

To ZOOM in:

Use the mouse wheel, or scroll, to zoom in and out of your model.

To PAN:

Hold the Control button while clicking and dragging to pan your model on the screen.

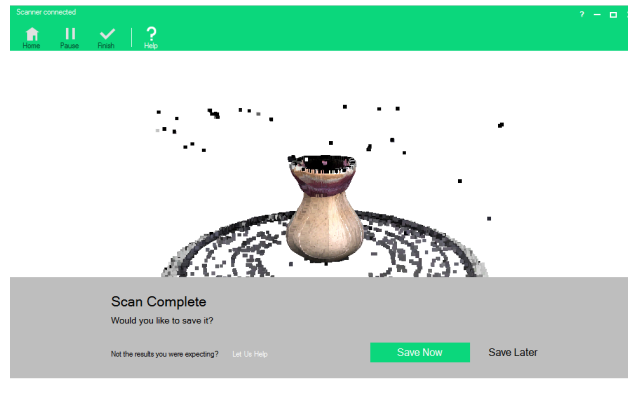
To RESET VIEW:

After clicking the view window, press the "c" key on your keyboard.

# Doing More with the Scanner

## Saving and Exporting a Scan

Once the scan has completed, users will be prompted to save the finished, rough scan.



We recommend that users save their rough scans before exporting to a different file format or cleaning.

For more information on how to clean a scan, see “Cleaning a Scan” (p. 23)

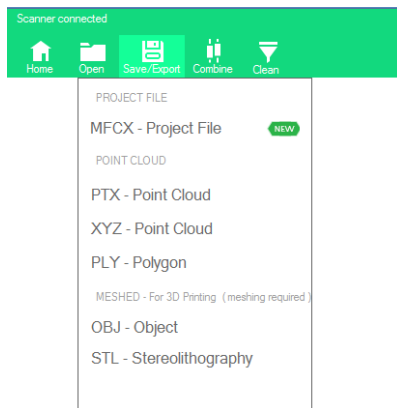
To save as a .MFCX file:

1. Click “Save Now”.
2. Enter file name.
3. Click “Save”.

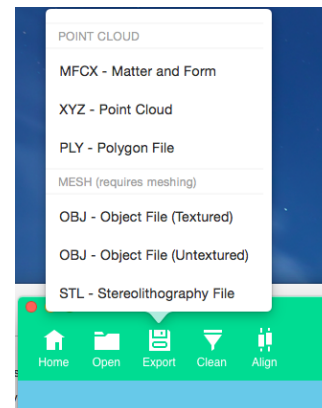
To export the scan in a different file format:

1. With the scan file open in the Scan Viewer, click “Save/Export” (Windows) or “Export” (Mac) on the toolbar;

Windows:



Mac:



2. Select the file format you wish to export as;
3. Enter the file name for the new export;
4. Click “Save”.

For additional information on the 3D file formats available, go to File Format Information (p. 44)

## Cleaning a Scan

During scanning, the scanner can sometimes pick up and add unintended points to the scan. The cause of these points can be reflections off the surface of the object or captured background movement, objects or reflections, amongst other things. In response, we developed cleaning tools to help remove those unwanted points. It is critical that you clean prior to meshing.

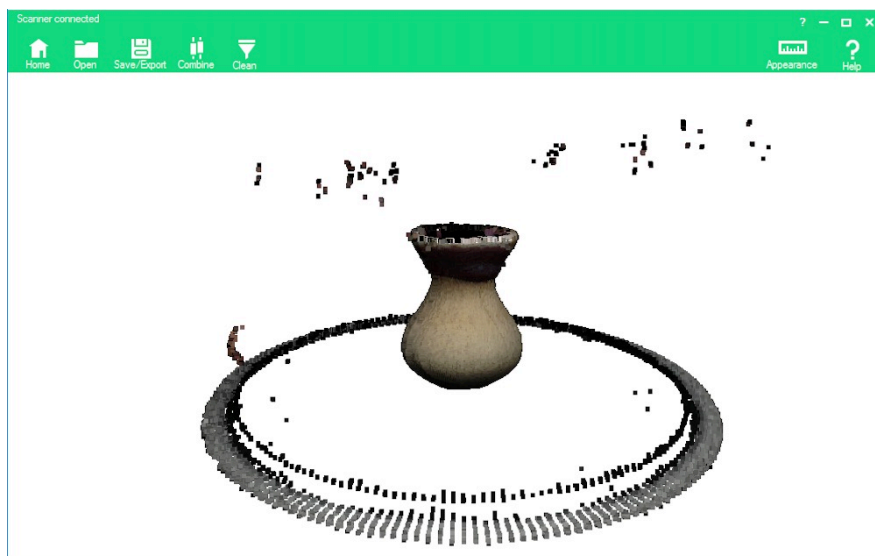
In Windows software, the scan will also often capture the scanner turntable. The scan will have to be cleaned of the turntable so it doesn't become a part of the final scan file.

In Mac software, the turntable bed is not usually captured in the scan.

## Cleaning Scans in Windows

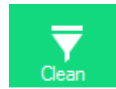
Below is an example of a raw scan of a small, handmade vase. Note the visible scanner bed and what appear to be spots floating in mid-air.

Example raw scan in Windows:

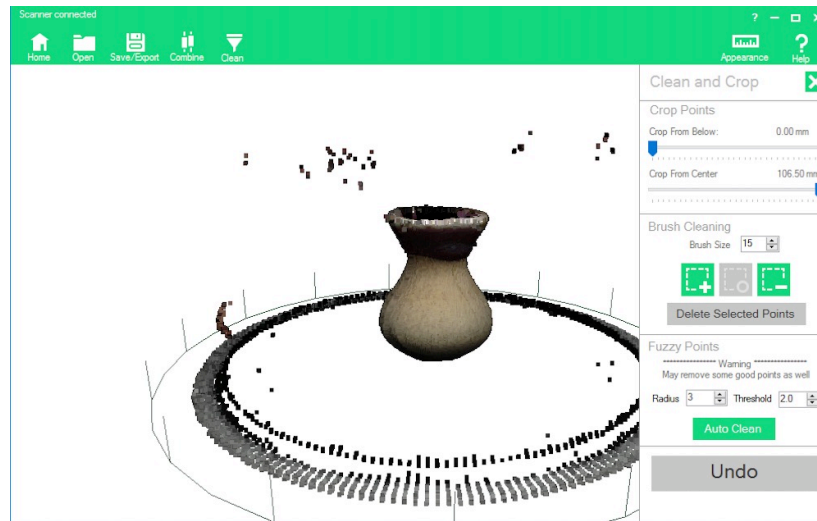


To get rid of these unwanted points, the software has a “Clean” function.

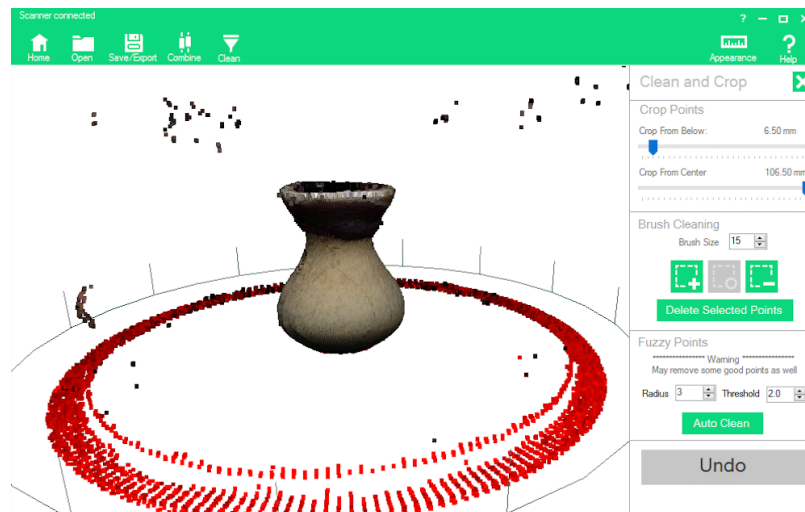
1. Click the "Clean" button on the tool bar.



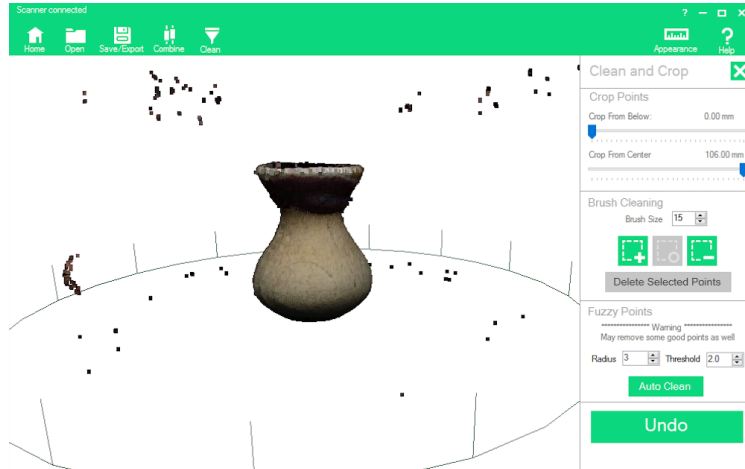
2. Clean tools will appear in the area on the right. There are three major options: Crop Points, Brush Cleaning and Fuzzy Points/Auto Clean. There is also an “Undo” button to restore points that you have cleaned.



3. Cropping removes all points outside an area you specify. Use the sliders (click and drag or use your arrow buttons) to control how much of the image you want to crop out. Points will highlight in red when they are in the cut off area. The first slider removes points from the bottom up.

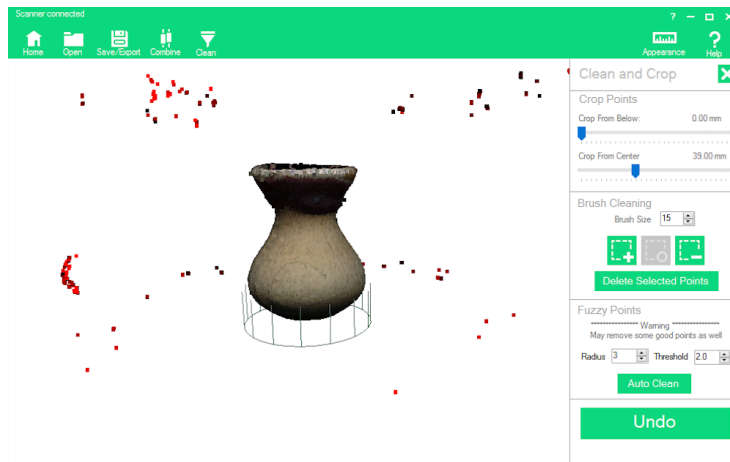


*Points to be removed are highlighted in red.*

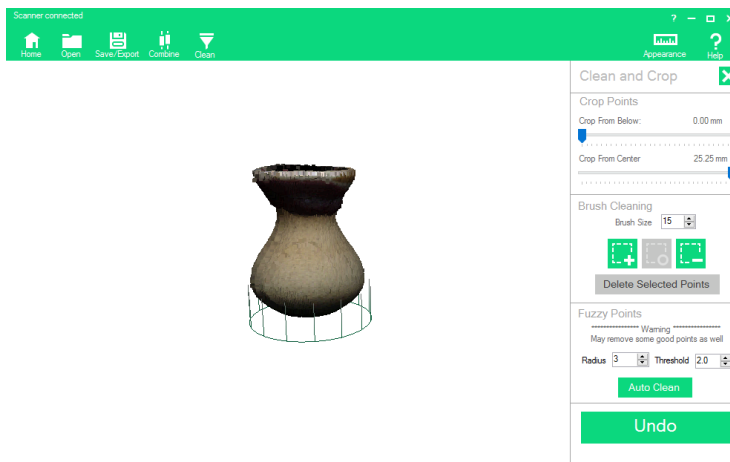


Result after clicking "Delete Selected Points"

- Use the second slider to crop points away from the center.

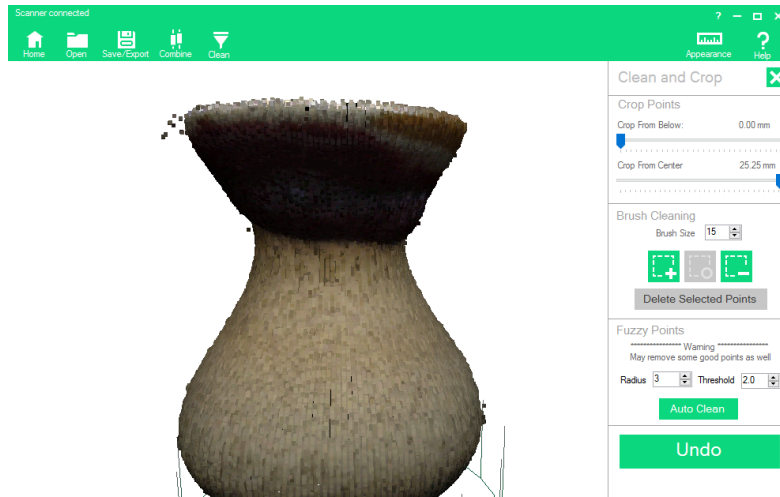


Slider has been moved to crop points outside the "cage" surrounding the vase.

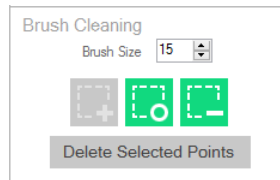


Results after clicking "Delete Selected Points".

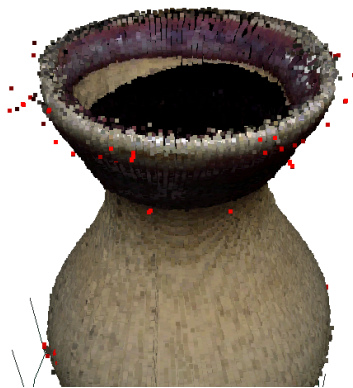
5. Zooming into the vase, we can see that there are still a few unwanted points. The Brush Cleaning feature can remove these individual points.



6. Under “Brush Cleaning”, there is an option to adjust brush size and three function buttons. The button on the right activates the brush, the center button returns the mouse to regular mouse functions so the image can be rotated/zoomed and the left button deselects points previously highlighted. Like with Crop tools, points highlighted in red will be removed.



7. Using the brush tool, click to highlight all the points that are to be removed.

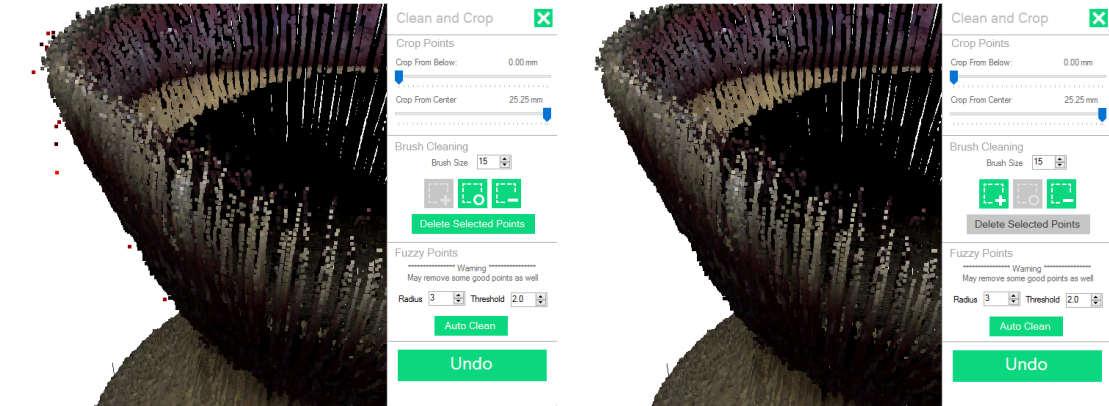


*Before: Unwanted points individually highlighted*



*After: Unwanted points deleted*

8. Zoom in close to remove even more points.



*Before: Note the points near the outer left surface.*

*After: Points have been deleted.*

9. All points can be removed including good points. Highlighting a section will remove all points in the path of the highlighted section. Rotate the model to make sure only unwanted points are highlighted.



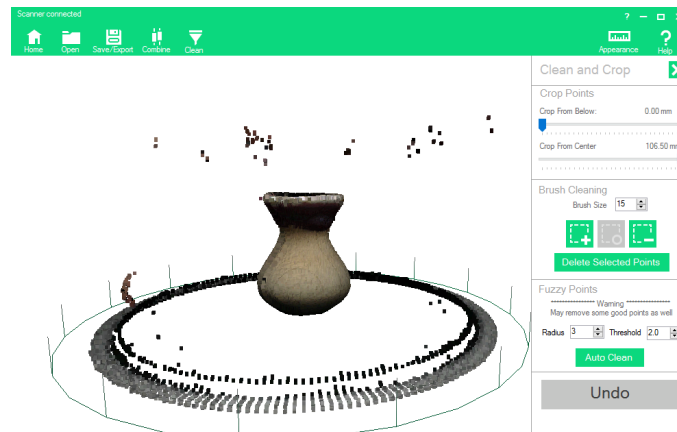
*Example: Good portion of the vase has been highlighted with the brush tool.*

*Result of clicking “Delete Selected Points”. All the points in the path of the highlighted section have been deleted.*

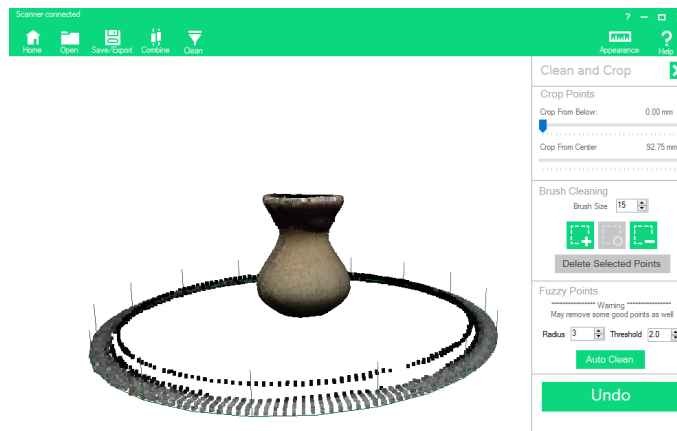
*Rotating the vase reveals holes on both sides.*

Click “Undo” to reverse unwanted changes or over-aggressive cleaning.

10. Another option is to use “Auto Clean”. The software automatically "cleans" what it determines are outlier points. Radius refers to the number of points surrounding each evaluated point in a scan. Threshold refers to the minimum distance, in millimetres, from the surrounding radius points that a potential outlier point must be for it to be cleaned/discarded. The lower the numbers, the more points are erased.



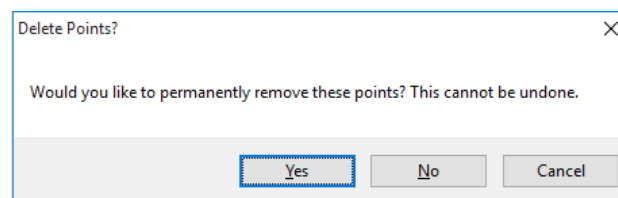
*Before Auto Clean*



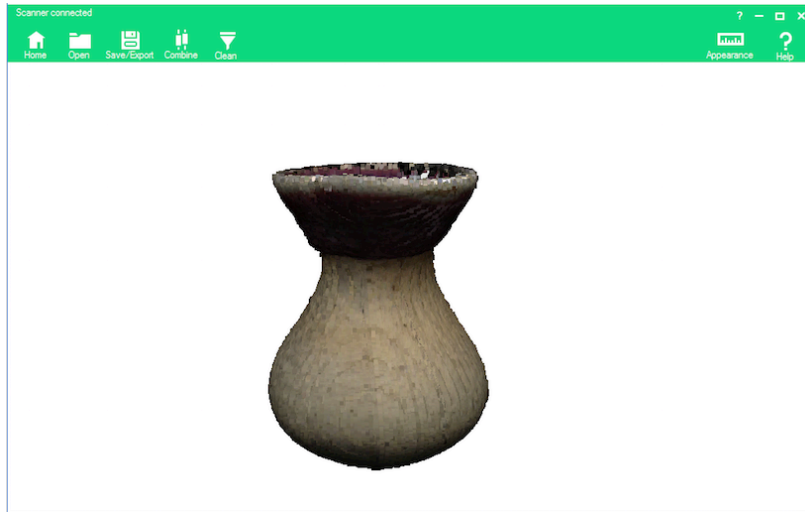
*After Auto Clean*

The default values (Radius: 3, Threshold: 2.0) were used to clean the above example scan. Cropping tools can be used to clean the bed away.

11. Once cleaning has been finished, click the green “x” next to Clean and Crop to close out of “Clean”. A new message window will appear:



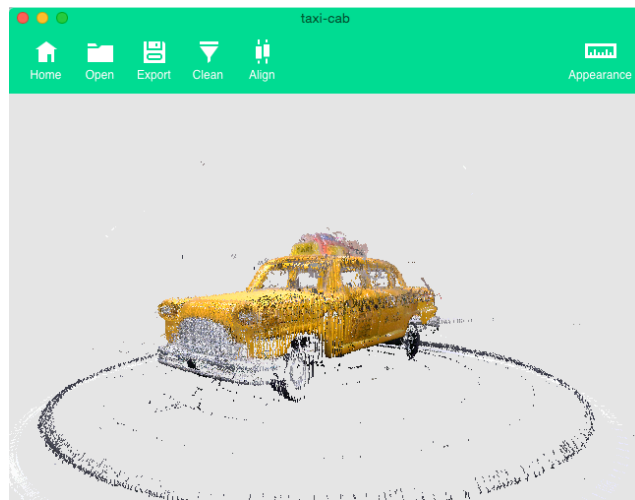
12. Congratulations! You have a cleaned scan. You are ready to save or export to a different file format.



## Cleaning Scans in Mac

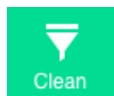
Below is an example of a raw scan of a toy taxi cab.

Example scan in Mac:

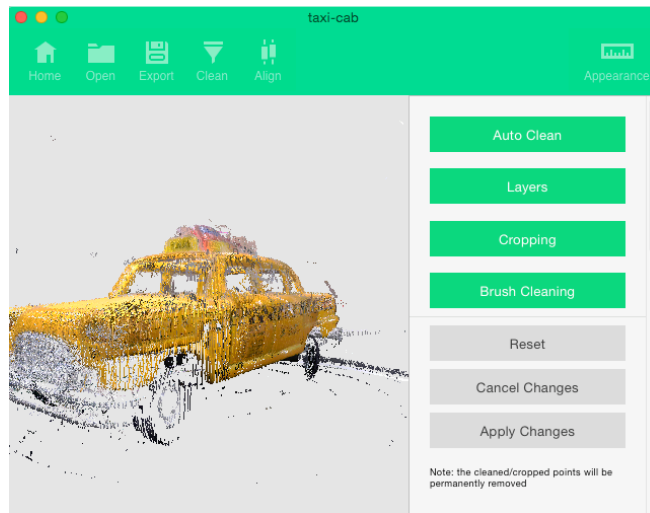


To get rid of these unwanted points, the software has a "Clean" function.

1. Click the "Clean" button on the tool bar.

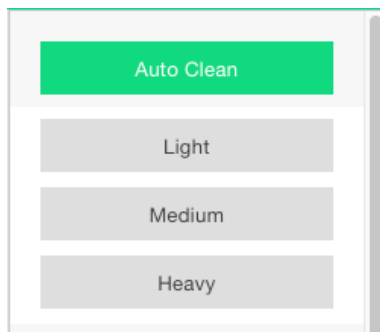


- Clean tools will appear on the right. There are four cleaning categories: Auto Clean, Layers, Cropping and Brush Cleaning.



## Auto Clean

Clicking on the Auto Clean button reveals three Auto Clean settings: Light, Medium and Heavy.



Light cleaning – errant points still remain on the scanner bed and around the bumper.



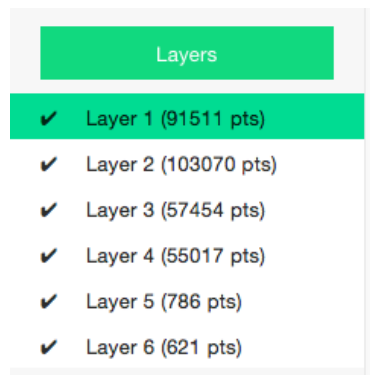
Medium cleaning – a few more points have been cleaned away.



Heavy cleaning – errant points on the scanner bed are gone but so are some good points around the front wheel.

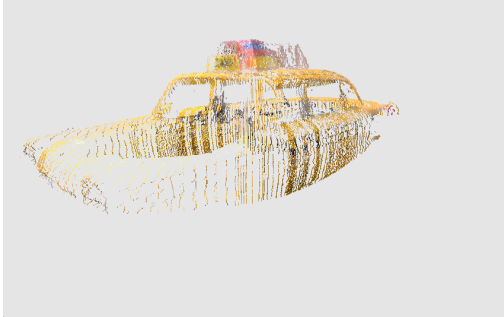
## Layers

Clicking on Layers will open all the separate layers captured by each laser. Each layer represents a pass or full rotation. Clicking on the layer will select or unselect the layer from view. Users have the option of cleaning layers individually or omitting whole layers from the finished scan.

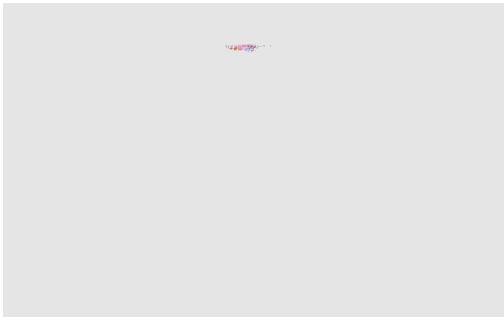




Layer 1 only



Layer 3 only



Layer 6 only

## Cropping

Clicking on the Cropping button opens crop tools. Users have the option of cropping from the top down, from the bottom up and from the center out. Values are in millimeters (mm) and are relative to the zero on the bed.

Cropping

From the top (mm):

From the bottom (mm):

From the center (mm):



Example of top down cropping (all points removed above 38 mm from base)



Example of bottom up cropping (all points removed below 24.7 mm from base)



Example of center out cropping (all points removed in a radius of 31.6 mm from center)

## Brush Cleaning

Clicking on Brush Cleaning opens instructions on how to transform your mouse into a brush or eraser tool that you can use to erase or fill in points.

### Brush Cleaning

Keyboard Shortcuts

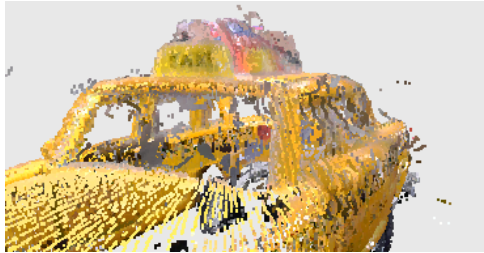
shift-mouse	: Add points
ctrl-mouse	: Subtract points
space-mouse	: Rotate model
option-space-mouse	: Drag Model
[ or ]	: Adjust Brush Size
delete	: Delete Points
esc	: Deselect Points

Clear Selection

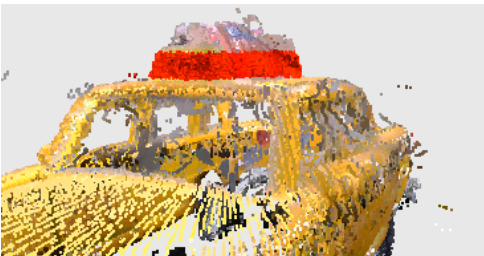
Delete Points



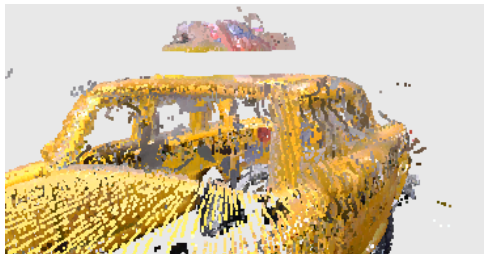
Using ctrl-mouse, unwanted points are highlighted.



Points are removed after clicking the “Delete Points” button.



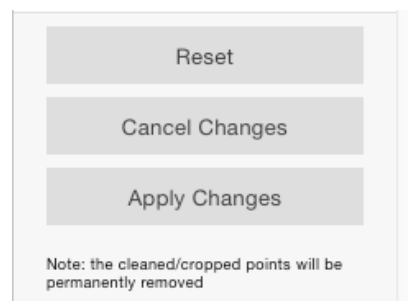
All points can be removed including good points. Highlighting a section will remove all points in the path of the highlighted section. Rotate the model to make sure only unwanted points are highlighted.



After clicking the “Delete Points” button. If you know that wrong points are selected, click “Clear Selection” to un-select.

## Final Steps

Final options include: Reset, Cancel Changes and Apply Changes.



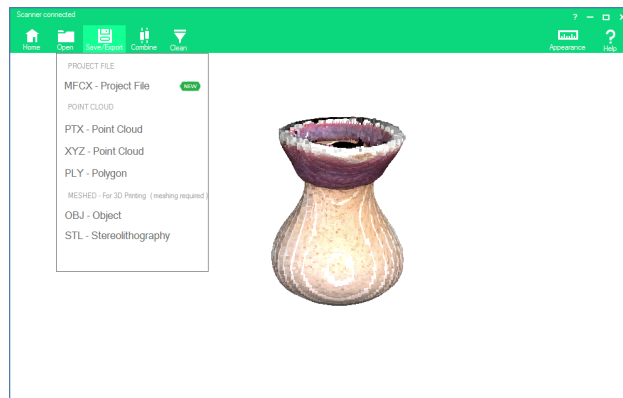
- **Reset** will undo any changes you've made but keep Clean functions open.
- **Cancel Changes** will cancel your changes and exit you out of cleaning.
- **Apply Changes** will save the changes you made and exit you out of cleaning.

Save your cleaned scan as an MFCX file and/or export to a different file format.

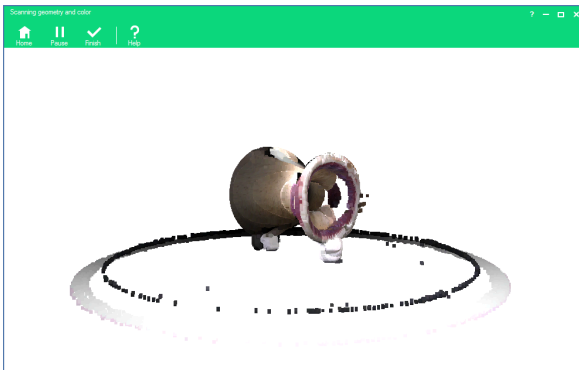
## Combining Scans

The software allows you to join two separate scans into one 3D file with the help of the Combine tool in Windows and Align tool in Mac. This is a helpful tool for instances where features of an object have been missed because of the scanning angle. For example, in the previous section with the vase, features on the bottom and top of the vase were missed. By performing another scan at a different angle (i.e. with the object on its side), those missing details can be captured and combined with the first scan to fill in the missing detail.

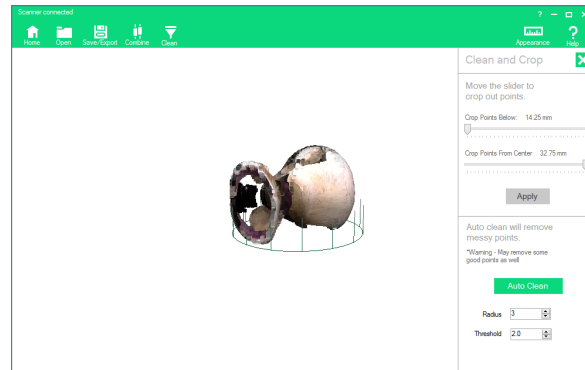
First sample scan:



Second sample scan:



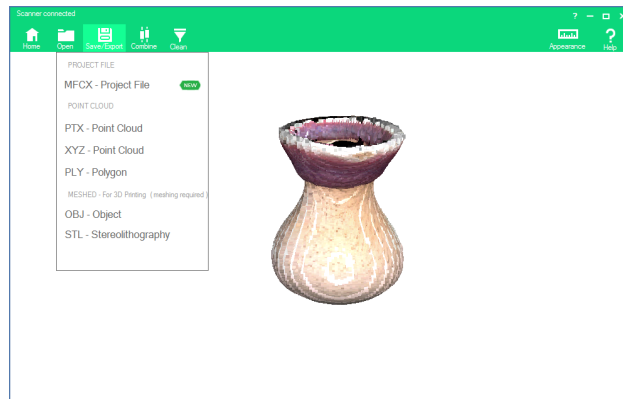
Sample after cleaning:



Note the plasticine used to prop up and secure the vase to the bed on its side in the scan on the left. The plasticine was then cropped away in the cleaning process so that it would not appear in the final 3D file.

Combining scans is an automatic process that uses mathematical algorithms to identify key points in two different scans. It lines up those key points so each individual scan can snap in place over top of another scan.

1. Open an existing and cleaned MFCX file. This file is your base file and should be the orientation you want your finished 3D file to be. It is also a good idea to ensure this is file with the most detail.



2. Click "Combine" in Windows or "Align" in Mac.

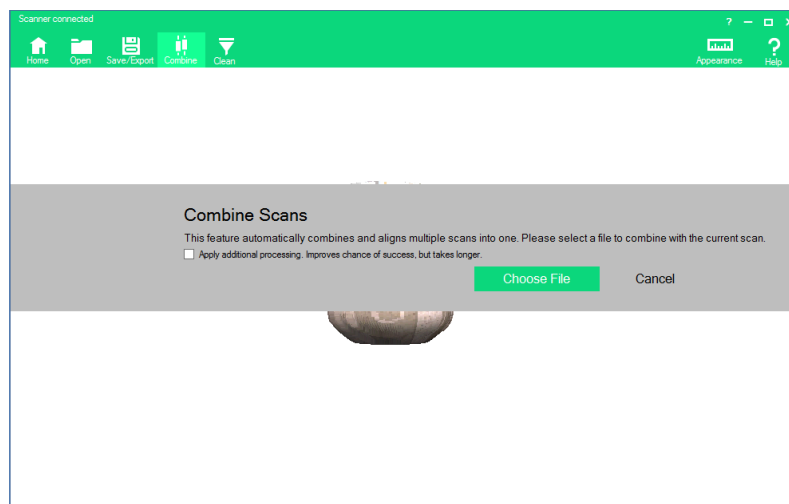
Windows:



Mac:

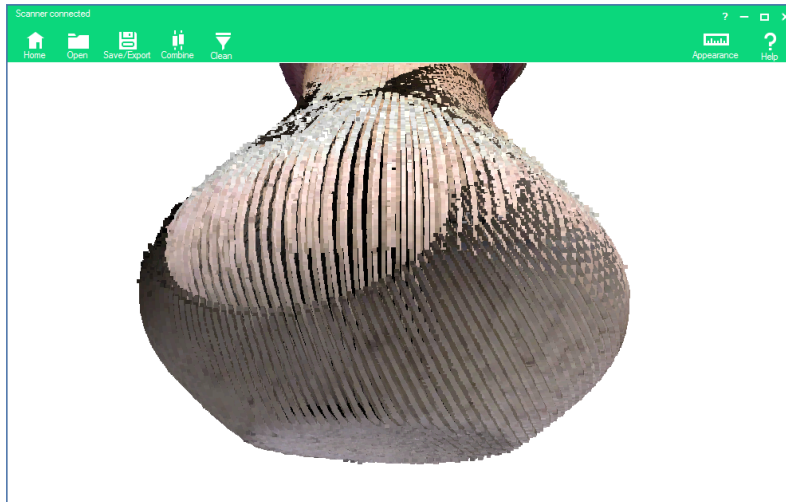


3. A message window will appear prompting you to choose a file to combine with.



4. Click "Choose File" to select the cleaned file you'd like to combine with.
5. Click "Open". The automatic combining process will begin. Depending on the size and complexity of your scan files, this may take a few minutes.

- When the combining bar disappears, the combining process is complete. The two scans are now combined. In our sample, the vase now has a fully captured bottom and top.



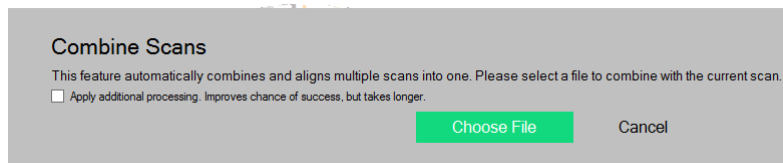
Note the crisscrossing rows of points indicating where the two scans have overlapped in this zoomed in image.

- Save and/or export the combined scan with a different file name.

The combining process can be repeated by adding additional scans to already combined files.

The combining process works by finding key points on both of the models the software is asked to combine. Occasionally, the algorithm that helps combine or align two scans gets the alignment wrong. For example, it's difficult to correctly align a cube with another cube because all the corners are the same shape.

In Windows, if your scan combine fails, you can re-try the combination by selecting the checkbox "Apply additional processing. Improves chance of success, but takes longer." Before you choose the file you would like to combine with.



This will flag the software to attempt to find the key points with more iterations of review and may achieve a better result.

Also, re-scanning in order to capture more key points or cropping away areas that may be confusing the algorithm may also improve your chance of success.

We are working on custom tools to nudge misaligned combined scans together after a failed combine scan for future versions of the software.

# The Basics of 3D Scanning

## How Our 3D Scanner Works

The Matter and Form 3D Scanner is a laser-based scanner. Laser scanners work by shining a laser at an object, using a camera to capture data that is returned from the laser hitting the surface of an object and then using software to stitch all that data together. On the Matter and Form scanner, as the lasers pass over the surface of an object, data is generated at a rate of approximately 2,000 points per second. This data is comprised of thousands of individual points that record things like surface detail, distance from the camera, texture, and color. These thousands of points, when viewed collectively, form a “point cloud” that is a direct representation of the scanned object.

The scanner is very good at capturing organic shapes. Curves, surface detail and outer geometry scan very well. Deep depressions and overlapping features, however, are difficult for the scanner to capture accurately. For example, it would be able to scan the outside of a drinking straw but not all the empty space on the inside of the straw. Like a photo camera, the scanner can only capture what is in its field of view.

## The Importance of Calibration

In order to maximize the scanner’s precision and accuracy, it’s highly recommended users devote time to calibration whenever the scanner has been moved. Every scanner will have tiny, unique differences as a result of the manufacturing process, temperature fluctuations and physical placement, so it is necessary to allow the software to properly measure and compensate for such differences (i.e., calibration).

Calibrating is especially important after a scanner is moved. All data captured by the scanner are in relation to the dead center of the turntable. Because the turntable can shift up to 1 mm, any potential shift can affect what the camera, lasers and software consider to be the dead center of the turntable when constructing a point cloud.

Throughout the calibration process the scanner’s camera, lasers and software are developing reference points in an XYZ coordinate system based on the geometries and angles of the calibration box and its checkered squares. Upon completion, the software and firmware will save these reference points when scanning all subsequent objects until calibration is completed again and new reference points are saved.

## What Happens During a Scan

The scanner uses two lasers to scan small to medium sized objects placed on its rotating bed. One rotation provides 360° coverage of an object. For some small objects, one full rotation (or pass) is enough to scan the whole thing. In order to capture larger objects, the scanner's head rises and automatically detects whether there is more of the object to scan. Like building a virtual layer cake, the scanner continues additional passes until the full height of the object is captured.

During the scan, the bed will rotate forward, but will also sometimes rotate back. This is by design and is called Adaptive Scanning. Its purpose is to capture as much of the object as is physically possible. As new sets of points are captured, the distance between them and the previously-captured set of points is calculated. If too much distance has been detected between the last recorded point, the scanner "backs-up" and re-scans the areas between the two sets of points in an attempt to fill in that distance with additional data.

## Problem Materials and Surfaces

There are some materials that laser scanners have trouble scanning. Because the scanner works by capturing the data that is made by the laser hitting the surface of the object, any material that makes it difficult for the camera to record where the laser is hitting it will not scan well.

- Objects with surfaces that are too shiny (i.e. shiny metal, jewels, mirrors, patent leather etc.) - will reflect or bounce the laser away from the object. If your scan looks like it has a halo of cotton candy spinning around it, that's a sign that the object is too shiny.
- Objects that are clear or translucent (i.e. glass, Lucite, clear plastic, flower petals, etc.) - will let the laser light pass right through the surface of the object instead of being stopped by the surface. Your scan will look like there's nothing solid where the laser light passes through.
- Objects that are too dark and absorb too much light (i.e. black velvet, fur) - will also absorb the laser light causing an inaccurate scan. The software won't be able to determine where the surface of the object is.

So how do you scan objects with the above features? Pre-treat them with matte paint, anti-reflection sprays or powder (i.e. baby or talcum powder). Users have also had luck with water soluble colored hairspray which is safe for most non-porous material and can be washed away with water. This may not be appropriate for all objects, however. Also, if you want to capture color data, be aware that the treatment may alter the color as it appears in the final scan.

## Single-Color vs. Multi-Color Scanning

The difference between the Single- and Multi-Colored scanning options is in the number of camera exposures used to detect the lasers. Single-Colored scans use one camera exposure for laser detection, whereas Multi-Colored scans use two camera exposures. To choose the best option for the object you want to scan, determine if your object's colors are contrasting, or if they are close to the same spectrum. This can be accomplished by looking at the Single-Color or Multi-Color? chart on p. 42.

Single- and Multi-Color scanning options are intended to make scanning objects easy. However, as you get more comfortable with scanning, you'll come to realize that the choice can be a little less black and white. For example, objects that have colors on both sides of the wheel, but are very light, can often be successfully scanned with the Single-Color option. The closer a color gets to white the more it starts to have in common with other colors which are also close to white, and the fact that they're on opposite sides of the wheel matters less. The same holds true for colors that are very dark (close to black).

For a more detailed analysis of laser detection and high contrast (multi-colored) objects, go to our section on Advanced Scanning (p. 49).

## The Importance of Lighting

Scanning should be done in well-lit conditions. Diffuse, white light is best. The type of light (fluorescent, LED, halogen, natural light, etc.) doesn't matter as much, as long as the lighting is diffused. Be aware that incandescent bulbs can add a yellowish tone to your final scan.

Lighting situations to avoid include:

- Spotlights or shining light directly on the object – it can cause hot spots in some areas and shadows in others making your scan appear lighter or darker than it actually is. Also problematic when combining a scan with a heavy shadow as colors won't match.
- Bright direct sunlight – can overpower and wash out the scanning lasers, leaving fewer points recorded by the scanner. Also causes hot spots.
- Dim lighting – causes missing or inaccurate data. Object will appear darker than it actually is.
- Variable lighting – lighting that fluctuates between bright and dark during the scan will affect the color information that is gathered, making the scan look striped. Can also happen if light is blocked during scanning.

Some people have set up outstanding lighting rigs with light boxes or LED arrays, but you can still get great scan results using fluorescent overhead lighting or regular incandescent lighting.

# 3D Scanner Terms

## File Format Information


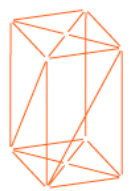
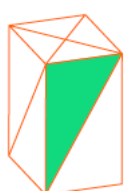

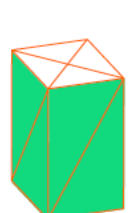
Besides our MFCX file format, there are several other file formats that all have unique attributes and can be used for a variety of purposes:

FILE TYPE	DESCRIPTION
MFCX (project file)	Matter and Form Inc's proprietary file format that is the quickest and easiest format to use while utilizing Matter and Form's software. Third party software, however, doesn't recognize this file format so scans must be saved in XYZ, PLY, OBJ, or STL format if you want to view and edit your scans with other software, such as MeshMixer, MeshLab, Blender, AutoDesk 3D, etc.
XYZ (point cloud)	The most basic point cloud format, saving your scan as an XYZ file will simply store all of the points without color on a Cartesian coordinate system with X, Y, and Z axes. Used for and with third party CAD modeling programs.
PLY (point cloud)	Also called the Stanford Triangle Format, it supports a relatively simple description of a single object as a list of nominally flat polygons. A variety of properties can be stored including color and transparency, surface normals, texture coordinates and data confidence values. The format permits you to have different properties for the front and back of a polygon.
OBJ (meshed)	An OBJ is another type of 3D model file. It is also used by a number of 3D modeling programs and meshes the point cloud, but is used for 3D printing less often than STL. Unlike STLs, where every facet of your 3D model is a triangle, an OBJ can contain both triangles and other polygons. Due to innate properties associated with our MFCX software, our scanner's camera takes 12 photos during each 360° turntable rotation while simultaneously capturing the point cloud. These photos are then layered onto the meshed point cloud while exporting/saving to OBJ format. In 3D computer graphics (CGI), one of the most common geometry interchange file formats is the OBJ because it captures texture so well. There are a few 3D printers that can print OBJs and reproduce the texture and color.
STL (meshed)	An STL is a widely-used type of 3D model file. It consists of surfaces made up of triangles. Each triangle has an inner side and an outer side. The outer side is called the "normal." In a well-formed STL, all the normals face outward and the surface is continuous, with no holes. When a model meets these standards, we refer to this as a "watertight mesh." This watertight-ness is typically mandatory for 3D printing.

## Point Cloud Basics

A point cloud is a set of data points in a coordinate system. In a three-dimensional coordinate system, these points represent the external surface of an object and are usually defined by X, Y, and Z coordinates.

There are five essential terms that are used to describe elements of a given point cloud: vertices, edges, faces, polygons and surfaces.

Vertices		A vertex is a position. It includes additional information such as color, normal vector, and texture coordinates.
Edges		A connection (i.e. a line) between two vertices is an edge.
Faces		A face is a closed set of edges. It can be categorized as a triangle face (three edges) or a quad face (four edges).
Polygons		If a collection of faces all exist on a single geometric plane, this one collection of faces is labeled as a polygon. Note: Polygons and faces are equivalent in software platforms that support multi-sided faces. However, most rendering systems support only 3- or 4-sided faces. So polygons are represented as multiple faces.
Surfaces		Surfaces connect neighbouring polygons together. Also called smoothing groups.

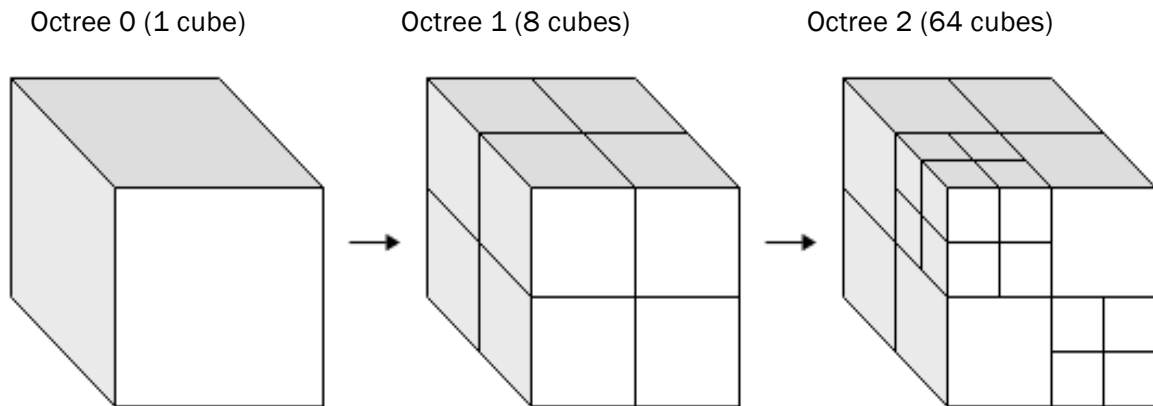
## Octree, Degree & Samples Per Node

When you're in the Windows version of the Matter and Form scanner software and saving or exporting your scan as a meshed object (i.e. as an OBJ or STL file), you are prompted to enter in your desired "Octree" and "Degree" settings. When you're in the Mac version of the software, you are prompted to enter in your desired "Octree" and "Samples per node".

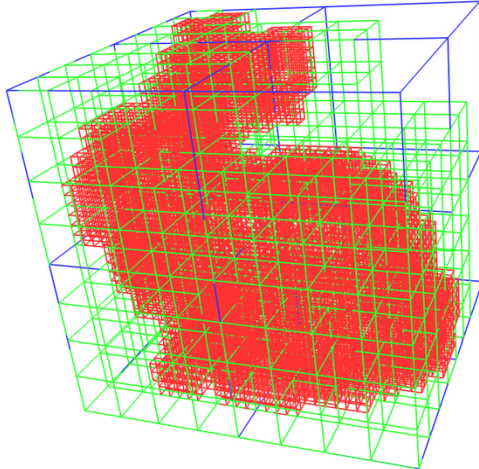
These are fairly complex subjects, but after experimenting you will get a feel for how these two settings affect the final meshed object.

**Octree Depth:** Octrees help the computer organize the points of a 3D object very efficiently. An oversimplified way of explaining it is to imagine slicing up your point cloud into eight **equal** cubes (octants). That is the equivalent to an Octree depth of 1.

To get to a depth of 2, slice up each octant into eight more octants (totaling 64 octants). Slice/divide those 64, and you get 512 octants. At an Octree depth of 9 ( $8^9$ ) you will have 134,217,728 individual octants (i.e., 134,217,728 individual little cubes grouping your points together).



The higher the number the Octree Depth parameter is set, the more importance is put on each point. This will also mean exponentially longer mesh times. The lower the Octree Depth number, the less importance each individual point has.



**Octrees and the Stanford Bunny**  
 This image depicts an octree setting of 5, but also includes octree settings of 1 and 3 for demonstration purposes (the larger boxes are lower octree settings)  
 SOURCE:  
<https://devtalk.nvidia.com/default/topic/609551/parallel-programming-education/my-cuda-programming-lecture-and-teaching-of-poisson-parallel-surface-reconstruction-in-a-summer-scho/>

**For Windows - Degree:** Each Octree cube has a collection of points. To make a mesh, each section needs to have a curve or line drawn through it using the points as reference. The polynomial degree tells the computer what type of line to draw through those points.

Degree Setting	Type of curve that the meshing software produces by using individual points within each Octree as references
1	Each Octree has a straight line of best fit
2	Each Octree has a quadratic curve of best fit
3	Each Octree has a cubic curve of best fit
4	Each Octree has a quartic curve of best fit
5	Each Octree has a quintic curve of best fit

The higher the number the degree parameter is set at, the more importance each point has and the more detail will be described. This will also increase meshing times at an exponential level. The lower the number, the less importance each point will have on the overall detail. For example, if you have a really clean and detailed scan, you can mesh at Octree Depth 9 and Degree 5 and get a great level of detail. For a scan of a smoother object with less surface details, you can mesh at 7 Octree, 3 Degree and get a smoothed-out version.

**For Mac – Samples per node:** The meshing software in Mac analyses and defines which points represent the surface of the object. When it comes time to mesh, the samples per node help define the minimum number of sample points the meshing algorithm puts into one octree cube (or “node”) as the surface is being reconstructed by the algorithm.

If you have noisy data, a high sample per node value provides a smoothing effect but it can also cause loss of detail. A low value (between 1.0 and 5.0) keeps the detail level high but can look rougher.

So how to choose your settings? Higher values for octree depth results in more detailed results. However, if you have a noisy scan, the software may not be able to

distinguish what is a good point from a stray point and may attempt to treat them equally. This is where the samples per node value can help since it will limit or expand the number of points being considered.

A good method is to determine the level of detail you want by setting the octree depth that gives you the shape you want and then fine-tuning the surface smoothness with the samples per node value. A high samples per node value will deliver a smoother surface while a low samples per node value will deliver a more detailed, but potentially rougher, surface.

For more information along with images and examples, check out this explanation from the Computer Science Institute at [http://vr.tu-freiberg.de/scivi/?page\\_id=365](http://vr.tu-freiberg.de/scivi/?page_id=365)

# Advanced Scanning

## Introduction

Advanced scanning grew out of the research and development we conducted when we were building the scanner software. We needed a way to control the fundamental aspects of the scanner and visualize the results, so we could understand what worked and what didn't.

The main screen scanning options - "Single-Colored" and "Multi-Colored" - both codify and encapsulate the knowledge we gained through using the advanced features. These have improved with each release, and now they've reached a point where their results are often as good as those you'd get in Advanced. But to understand what they're doing and why, the best way to explain is to take you through Advanced scanning, so you can have a similar journey to the one we've had - learning what are the fundamental aspects of the scanner and how they affect the end result.

Understanding these things and using the Advanced features is surprisingly easy, especially when you give them a try in the software.

## Mac vs. Windows

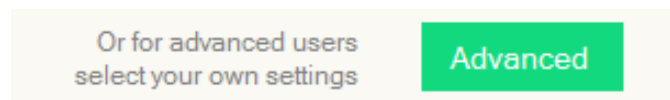
The concepts presented in this document apply to both Mac and Windows software. However, the two software packages look and function slightly differently. We are actively working on a UX unification plan for our software.

Thanks for your patience while we get the software packages unified.

For Mac users, go to *Advanced Scanning for Mac* (p.64). For Windows users, continue on below.

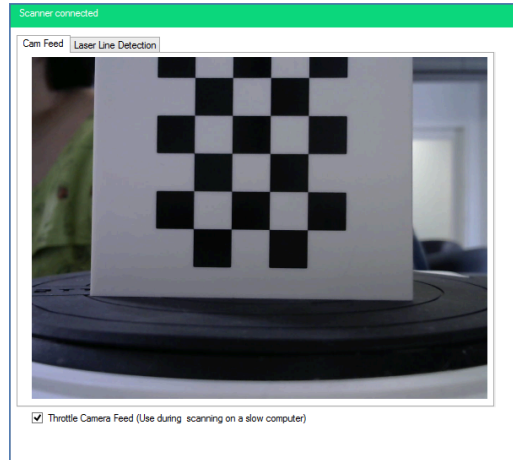
## Advanced Scanning for Windows

To get into the Advanced Scanning area in the Windows software, click on the "New Scan" button in the home screen, and then click the "Advanced" button at the bottom of the next screen.



Let's take a tour of the screens in Advanced Scanning.

## Cam Feed Tab



The Cam Feed tab shows what the camera is seeing. At the bottom there is a checkbox “Throttle Camera Feed (Use during scanning on a slow computer)”. When this is checked, only one in four images from the camera actually get displayed; the others are discarded in order to lower CPU usage. It doesn’t affect the scan. However, if you have a very slow computer, keeping this checked to reduce the strain on the CPU is a good idea.

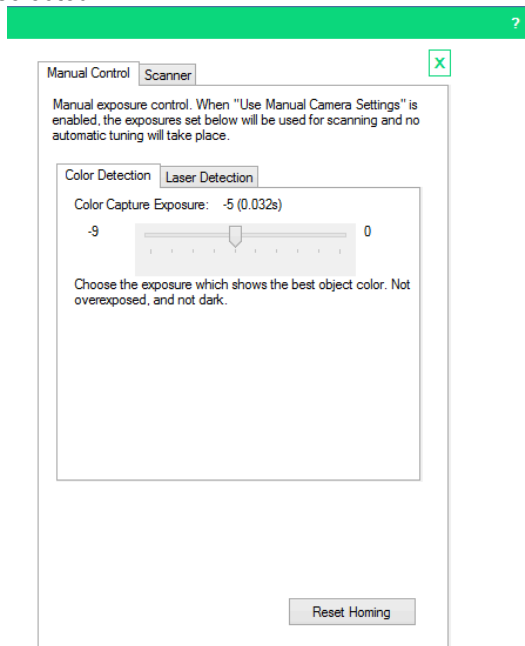
## Laser Line Detection Tab



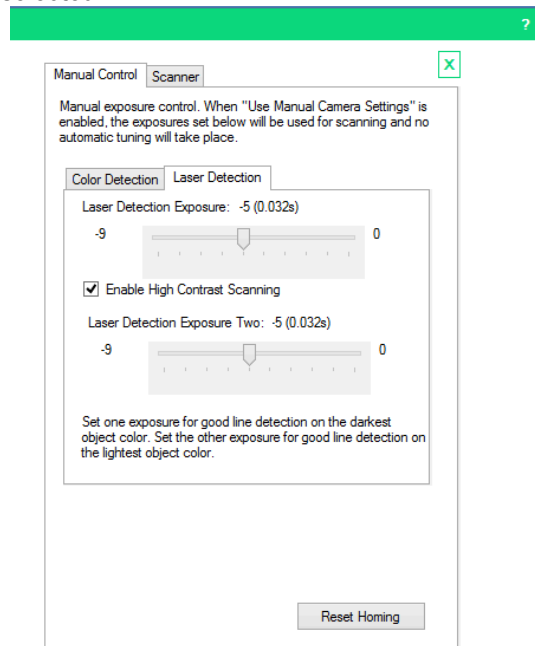
The Laser Line Detection tab is used to visualize where the lasers are being detected. This is the most important aspect of advanced scanning. This screen shows a visual representation of the laser lines, and you can adjust the exposure of the camera until you get the best visualization possible. When your laser line is “clean”, meaning that it doesn’t have a lot of noise (appears as fuzzy static rather than a straight solid or nearly solid line), you’ve found the exposure that will give you the best scan results for the object.

## Manual Control Tab

Manual Control tab w/ Color Detection tab selected



Manual Control tab w/ Laser Detection tab selected

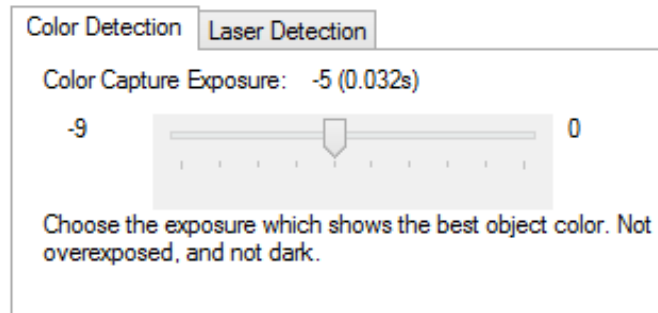


The Manual Control tab is where you pick the camera exposure for capturing the color of the object, and for capturing the laser lines.

A note about exposure: Each of the exposure sliders (in the Color Detection tab and in the Laser Detection tab) are labelled -9 on the left and 0 on the right with -9 being the brightest exposure and 0 as the darkest. The camera shutter is open for a longer period of time at setting -9, letting in more light. Conversely, 0 is dark because the camera shutter is only open for short period of time, so less light gets in. Simply put, the longer the exposure, the brighter the image.

As you use the scanner you will notice that sometimes the lasers fire quickly, and sometimes they fire slowly. This is directly related to the exposure. Darker objects require a brighter exposure (i.e. the shutter has to be open longer) while lighter colored objects require a darker exposure (i.e. the shutter has to be open for a shorter period of time). Therefore, a darker-colored object will take longer to scan than a lighter-colored object.

## Color Detection



The goal of Color Capture Exposure is to find the exposure where the object's colors appear realistically. You want an exposure that shows the Colors on the object in a bright but not overexposed manner.

Move the slider left or right to see the result in the Cam Feed.

On the next two pages, examples will be given on what to look for when manually adjusting color settings.

### Example 1: Picking the best exposure for color

Here are three examples of color capture adjustments. As you can see in the images below, the second one is the best choice. It's bright, but not so bright that it's turning white.



The color capture on a scan with this exposure will result in a fairly dark object. White looks grey.



This is a good choice for color.



This is overexposed.

## Example 2: When the choice isn't clear

Sometimes you might find that the difference between two exposures doesn't give you a strong impression about which is the better choice for color. There isn't necessarily a wrong choice in this instance, either one will probably be OK. We recommend that a good way to help decide is to look at the white area of the scanner that holds the scanner bed (seen at the bottom of the Cam Feed screen). In which of the exposures does it appear clearest? Choose that one.

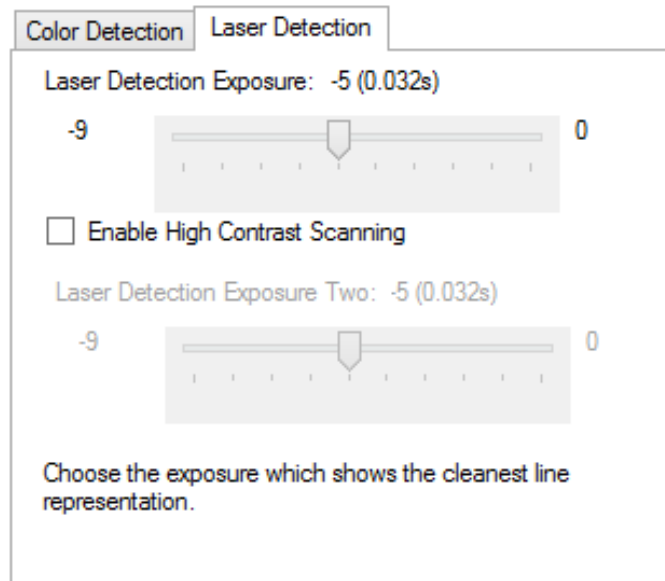


The scanner bed casing is overly bright and slightly blurred.



The scanner bed casing is well-defined and clear. This is probably your better choice.

## Laser Detection



The exposure of the camera has major ramifications on the quality of the final scan. The basic rule is that the dark-colored areas of the object will need a bright camera exposure and the light-colored areas of the object will need a dark camera exposure in order to best detect laser lines firing at the surface of the object.

The Laser Detection tab has two sliders, and one checkbox. The top slider (called Laser Detection Exposure) is used to set the primary laser exposure. This is the exposure the camera will be set to when the lasers are fired, the goal being to allow the laser to be detected in the software as accurately and completely as possible. You want as long a laser line as possible, without gaps. An important thing to note is clicking on the Laser Detection tab actually starts the laser detection process (the lasers will begin firing) and the software will start detecting the lasers. Laser Detection stops when you close the advanced settings screen or when you click off the Laser Detection tab.

The Laser Line Detection tab (p. 56) shows a visualization of the detected laser line. To meet the goal of "as accurately and completely as possible", watch this screen while adjusting the Laser Detection Exposure slider. On the next pages, we have examples that show the progression from a dark exposure to a bright exposure.

### Example 3: Picking the Best Laser Exposure

The best exposure in this set of images is the middle one. You have a nice solid line, with no gaps, and no dotted line effect.



In this image the two laser lines have gaps in the middle. This is an area where the software is not able to pick out the laser in the image.

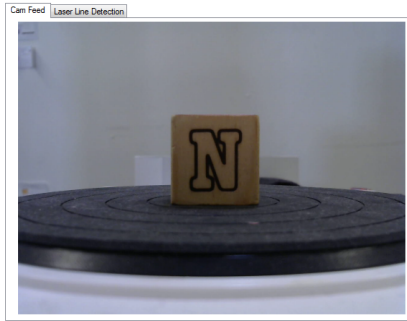


Here the gaps are closed. This is a good set of laser lines.



Here, the laser line on the left is starting to disintegrate. It looks more like a dotted line than a solid line.

### Example 4: Picking the best laser exposure



As we experiment with different laser exposures for this wooden block, pictured to the left, the wrong choices are apparent. Exposures 0, -1 and -5 all give broken lines with lots of gaps. Removing them leaves -2, -3 and -4, and they're all comparable. So how do you choose the "best" of two or three exposures when they are more or less the same? The best choice in a case like this is to choose the highest value exposure, which in this case is -2. As a rule, when more than one exposure gives good results, choose the highest value one, as it will often let the scan go faster, and also reduces data found on the scan bed.



## High Contrast Scanning

High Contrast Scanning is a method that we developed in order to capture the best data possible when scanning objects that had more than one color present. During development, we discovered that black and white objects or objects with contrasting colors were difficult to scan. Exposure tuning for one color would mean that areas on the opposite end of the spectrum would scan poorly or not at all. Rather than require users to only scan objects that were a single color, we developed a contrast scanning process that allows for improved color detection.

In our automatic settings, this setting is available by clicking on the Multi-Colored option on the Object Color screen. In Advanced settings, it can be activated by clicking the “Enable High Contrast Scanning” in the Manual Control > Laser Detection tab.

### How Do I Identify High Contrast Objects?

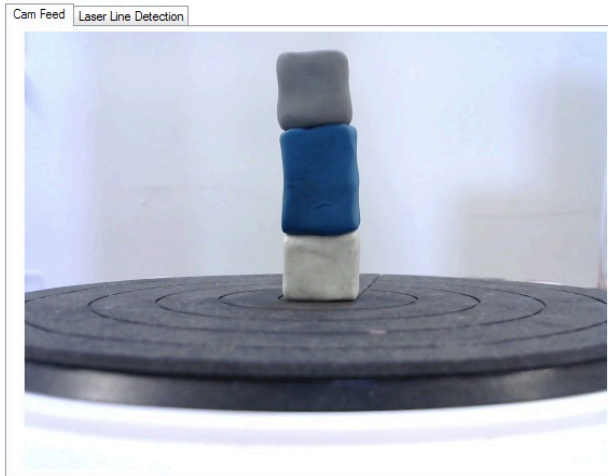
#### **Three rules for determining if you need high contrast scanning**



1. Is your object black and white? If yes, use high contrast. If no, go to rule 2.
2. On the color wheel to the left, notice there is a black line splitting one set of colors from the other. If the colors of your object fall on both sides of the line, use high contrast. If they don't, don't use high contrast.
3. Pastel colors, light grey and medium grey should be treated as being on the orange side. Dark grey and black should be treated as being on the blue side. Once you've placed your colors on the wheel, use rule 2 to decide the appropriate scan option.

### Example 5: Setting High Contrast Laser Detection Exposure

Some models cannot be scanned with only one laser exposure. A great example is these little blocks of clay. The bottom one is white, the middle is blue, the top grey. Let's take a look at the laser lines found at some different exposures.



High contrast colors: grey and white both contrast with blue.



Here you can see the laser lines when a darker exposure is selected. The white and grey blocks show nice lines, but the blue isn't there.



Here you can see the laser lines when a lighter exposure is selected. The white and grey blocks don't show up, but the blue block has a nice laser line.

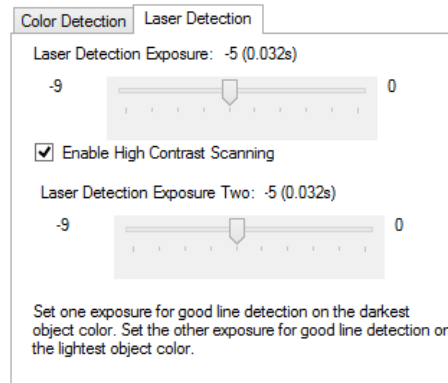
## The Best of Two Exposures

To solve the problem in example 5, we must use High Contrast Scanning. It provides the means to combine the best laser detection from two exposures, so you can capture more of the object. To use it:

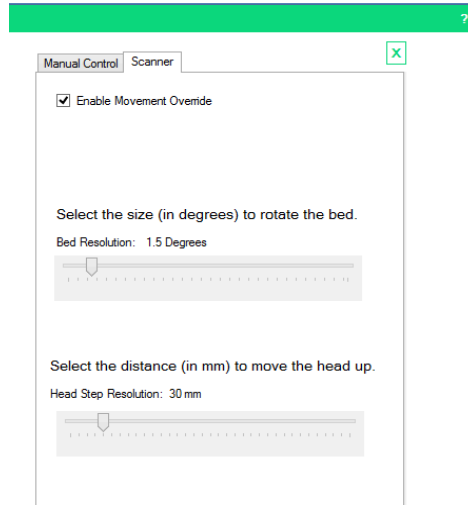
1. Under the Manual Control tab, click on the Laser Detection tab to start the laser detection process.
2. Adjust the top Laser Detection Exposure slider to capture clean laser lines on the light areas of the object. When you're satisfied that you've got the best lines possible, proceed to step 3.
3. Check the Enable High Contrast Scanning checkbox, which enables the bottom Laser Detection Exposure Two slider.
4. Adjust the Laser Detection Exposure Two slider for a lower exposure (usually you'll be in the -9 to -5 range) until the dark areas of the model fill in with a clean laser line. Remember that the lower value exposures are brighter, which means they take longer, so you'll need to wait a moment on each to see the results in the visualization in Laser Line Detection.



High Contrast Clay Blocks with Good Exposure (clean, solid line)



## Scanner Tab



This tab contains a checkbox labelled “Enable Movement Override”. When checked, two sliders are enabled, “Bed Resolution” and “Head Step Resolution”. These sliders allow you to specify the degree of bed rotation and the number of millimeters the head will move during the manual scan process, overriding the automatic settings built into the software.

### Bed Resolution

The larger the degree of bed rotation, the faster your scan will go, and the less detail you will capture. Conversely, the smaller the degree of bed rotation, the more detail will be captured and the slower the scan will go.

If you want to do a very quick scan, set this at 5 degrees or more. The lasers are fired and points captured at each rotational degree, so the larger the degree, the fewer times the capture process happens. It takes about one second to capture and calculate three dimensional points each time the lasers are fired, so the time per “pass” (pass: the 360° rotation of the object) is easy to calculate.

Bed Rotation	# of Captures	Regular Scan Time	High Contrast Scan Time
0.5°	720	12 minutes	24 minutes
1°	360	6 minutes	12 minutes
5°	72	2 minutes	4 minutes

The regular scan process uses “Adaptive Scanning”, which means that each new set of points is reviewed to determine how far the model has rotated since the previous set of points. If there is a large distance between the two sets of points, the bed will

rotate back and capture data between the two sets of points. This helps ensure that as much of the model is captured as is physically possible.

Changing the bed rotation degree size overrides Adaptive Scanning. Rotation will be fixed at whatever degree you have set it for.

### Head Step Resolution

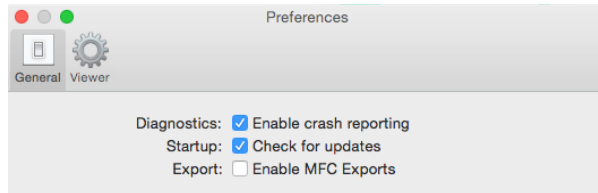
You may notice that during scanning, there is a lot of overlap between the points captured from one pass and the points captured on the next pass. You can use the Head Step Resolution setting to adjust the distance the head is moved between passes to minimize this overlap. This will also decrease scan completion time.

Note that the smaller the object, the larger the distance you can move the head, provided you've placed the object in the center of the bed. Larger objects that take up more space on the bed will need a smaller head movement to avoid missing areas between passes.

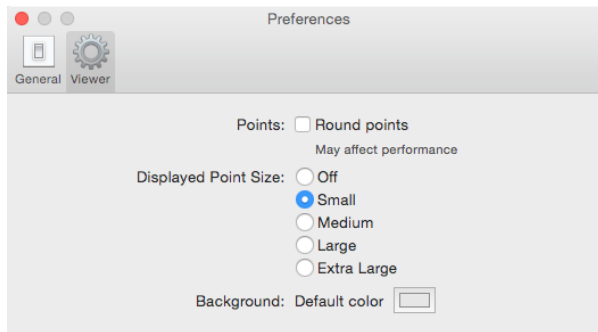
# Advanced Scanning for Mac

## Preferences

In the “Scan” menu, click on Preferences to access crash reporting, check for updates and enable exporting under the General Tab.

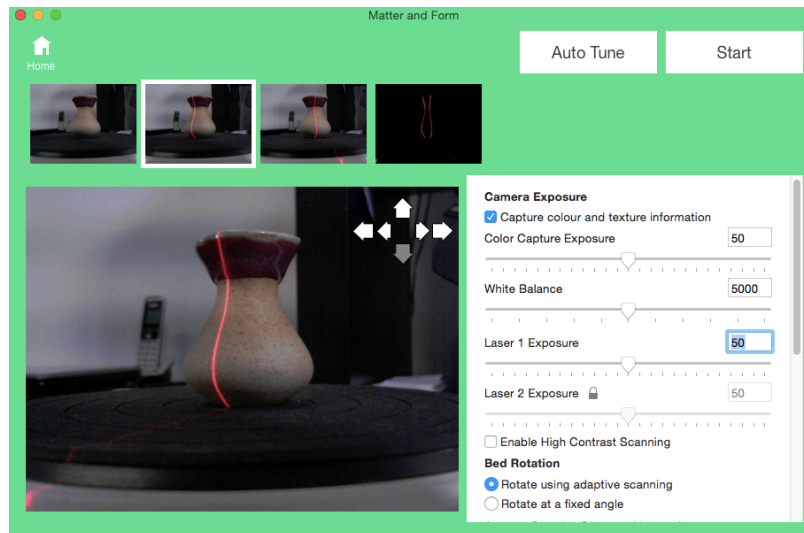


Under Viewer, point size and background color options can be changed.



## Manual Scan Settings

Clicking on “Manual Scan” from the home page reveals manual settings screen.



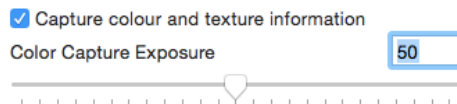
There are four small screens visible above the main screen. Rolling a mouse over the screens reveals what the screens are. From left to right they are: Camera Exposure, Laser 1 Exposure, Laser 2 Exposure and Combined Results.

On the right side of the screen is a scrollable pane that contains all the manual controls for the scanner.

## Camera Exposure

Camera exposure options include Color Exposure, White Balance, Laser Exposure (Laser 1, Laser 2, High Contrast Laser 1 Alternate and High Contrast Laser 2 Alternate).

### Color Exposure

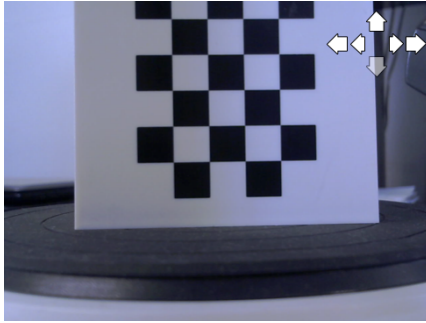


- Move the slider to capture the best exposure for color quality.
  - You want it bright enough to see the colors clearly but not too bright and over-exposed. See *Example 1: Picking the best exposure for color* (p. 54) for more detail.
- By default, the scanner captures color and texture information. Unchecking the Capture color box disables the exposure slider and removes it and the Color Exposure screen from view.

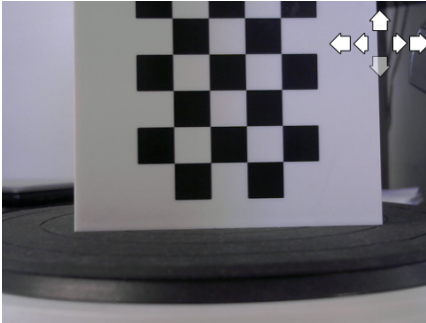
### White Balance



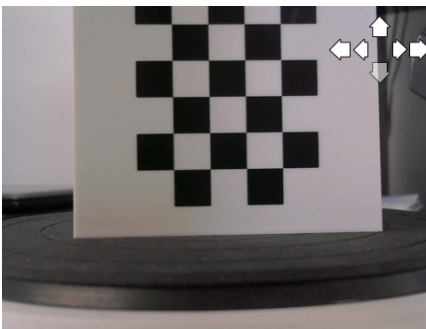
- Taking a moment to adjust the white balance will help the color captured by the camera to appear as accurate as possible. If your object doesn't contain any white, use the calibration box.
- Adjust the slider until the image on the Color Exposure screen matches the true color of the object.
- Fluorescent lights cast a blue (cool) hue while incandescent and tungsten bulbs cast a yellow (warm) hue so, depending on the lighting conditions, white balance will need to be adjusted.
- On the following page are some examples of the same object at different white balance settings.



*White balance setting is too cool giving the image a blue hue.*

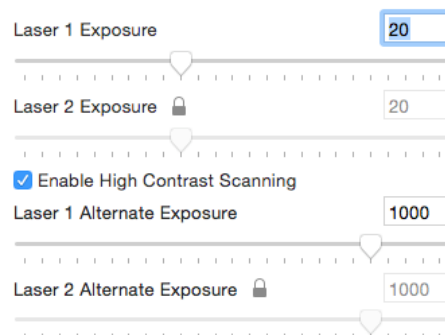


*White balance is set at a good setting for the room. The white of the calibration box looks neutral and close to what it actually looks like.*



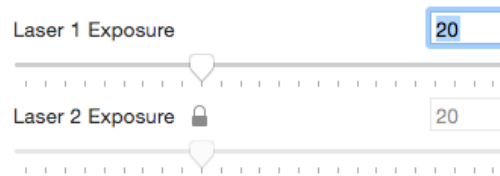
*White balance setting is too warm giving the object a slight yellow hue.*

## Laser Exposure

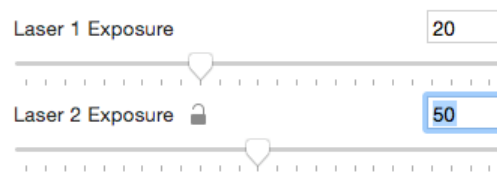


- As previously described in *Laser Detection* (p. 56), laser exposure refers to settings that affect the quality of the laser line detected. The goal is to have straight, clean laser lines.

## Setting the Lasers



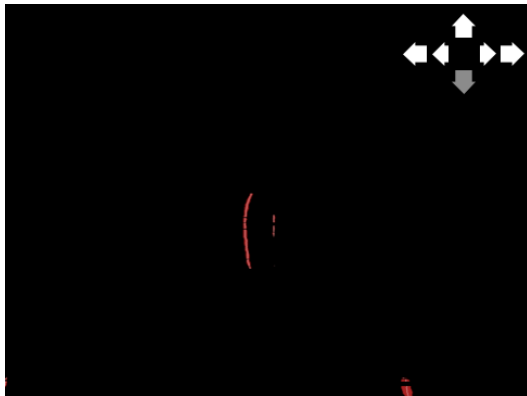
As you move the slider for Laser 1, you'll notice that Laser 2 Exposure is tied to Laser 1. Clicking on the padlock icon unlocks Laser 2 Exposure for fine-tuning.



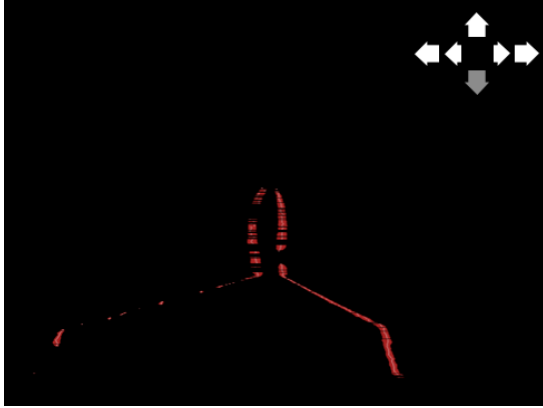
### Example 6: Adjusting Laser Exposure in Mac – Low Contrast



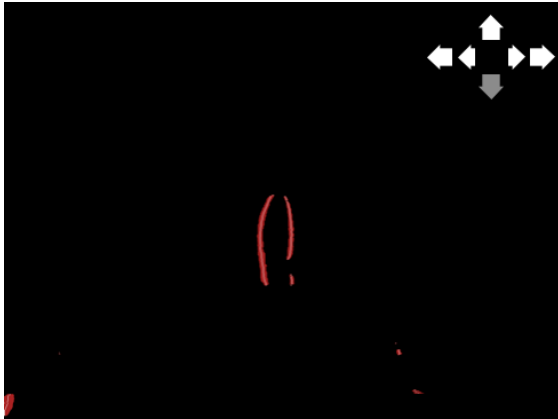
Taking the time to manually adjust laser exposure can greatly improve the quality of scans. This example takes a low contrast object (object's colors come from one side of the color wheel, see *How Do I Identify High Contrast Objects*, page 59, for more detail) through the process of setting laser settings.



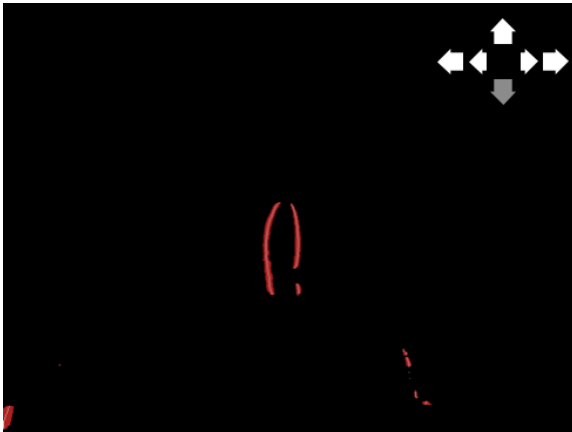
In the Combined Results view, we can see that the laser lines are dull, fuzzy and Laser 2 is barely visible. The exposure is likely too low.



Moving the Laser 1 Exposure slider far in the other direction results in brighter but fuzzier lines with a lot of gaps.



With Laser 2 locked, the slider is moved to find the best exposure. The lines are stronger but not fuzzy and gaps have been minimized (note: the space on the line on the right is a gap between the rhino's belly and foot)



To see if Laser 2 Exposure could improve, it was unlocked and adjusted by one step. Laser 2 is now as bright and clean as Laser 1. The rhino is ready to scan.

## Setting the Lasers – Con’t

If you have an item that has contrasting colors or is black and white, click on the “Enable High Contrast Scanning” option.

Enable High Contrast Scanning

This will open up Laser 1 and 2 Alternate Exposure and add two additional preview screens to the top of the page.

The screenshot shows a control panel with four rows of settings:

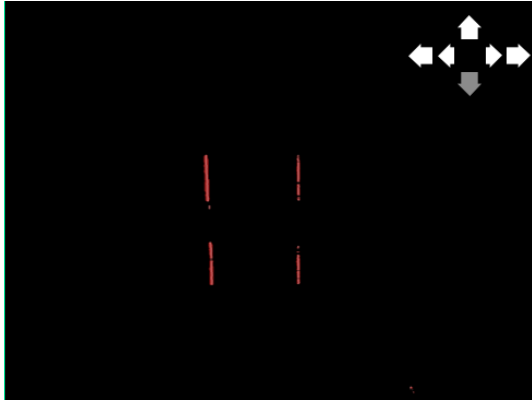
- Laser 1 Exposure:** A slider set to 20.
- Laser 2 Exposure:** A slider set to 50, with a lock icon.
- Enable High Contrast Scanning:** A checked checkbox.
- Laser 1 Alternate Exposure:** A slider set to 20, with a lock icon.
- Laser 2 Alternate Exposure:** A slider set to 50, with a lock icon.

Open the view that isolates each laser by clicking on the preview screen at the top of the page. With the view in the main viewer, move the slider for that laser until you find the cleanest line.

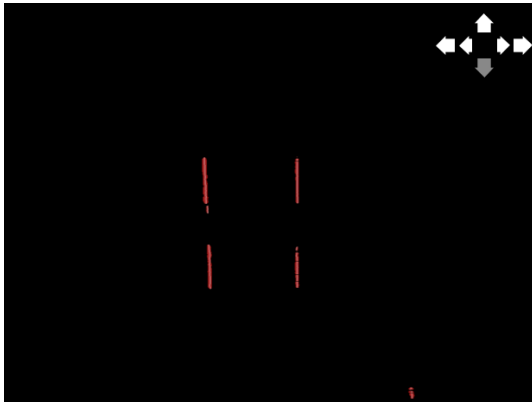
### Example 7: Adjusting Laser Exposure in Mac – High Contrast



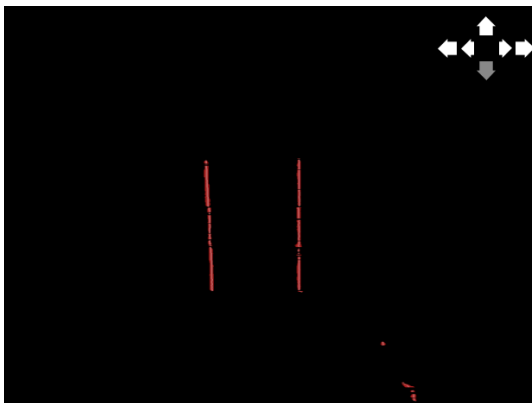
Items that have contrasting colors cannot be scanned properly with only one laser exposure such as this stack of colored paper blocks. By tuning for different colors, more of the object can be captured by the scanner. Click the checkbox next to “Enable High Contrast Scanning”, to begin.



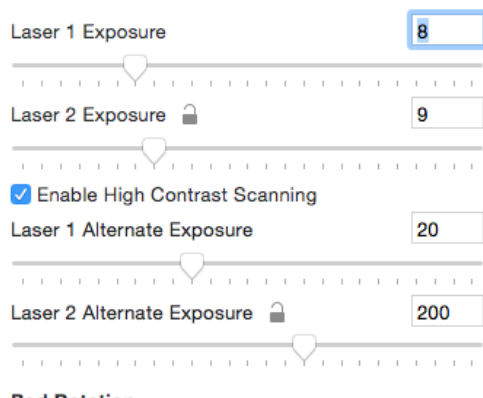
This might be what one might see in the Combined Results screen when in Manual Scan. The yellow and pink blocks are showing up but the green block is not.



Adjusting the main Lasers 1 and 2 gives clearer results. Laser 2 is unlocked to get the best results.



Alternate Laser 1 and 2 have now been adjusted so that the green paper block can be scanned by the scanner.



Settings window

Here's a screenshot of the Laser Exposure settings to get a sense of the range of values necessary to achieve the results above.

### A Note About Exposures

If a user uses both Mac and Windows software, he or she will notice that exposure values are expressed in different ways on the two different platforms. The table below offers a translation of the differences.

The exposures run in the range of 2 to 2500, where 2500 is the brighter and 2 is the darker exposure.

Windows	Mac
-9	2500
-8	1000
-7	300
-6	150
-5	50
-4	10
-3	8
-2	6
-1	4
0	2

## Bed Rotation

**Bed Rotation**

Rotate using adaptive scanning  
 Rotate at a fixed angle

Average Rotation Distance (degrees)

Min  Max

Scrolling down past Laser Exposures reveals Bed Rotation options. The default setting has adaptive scanning enabled. Adaptive Scanning is an automatic process whereby each new set of points is reviewed to determine: 1) how far the model has rotated since the previous set of points and, 2) the number of points captured. Using a mathematical model, if there is a large distance between the two sets of points and a drop in the points collected, the bed will rotate back and capture data between the two sets of points. This helps ensure that as much of the model is captured as is physically possible. Changing the minimum and maximum distance in degrees changes the average area of comparison as the bed rotates.

Selecting “Rotate at a fixed angle” overrides Adaptive Scanning. Rotation will be fixed at whatever degree it is set at.

**Bed Rotation**

Rotate using adaptive scanning  
 Rotate at a fixed angle

Bed rotation (degrees)

.....|.....

This setting may be useful if a user wants to speed scanning up (increase bed rotation degree size), particularly if scanning an object with smooth surfaces and not a lot of detail.

Using the slider, degrees can be increased or decreased by whole numbers. Users can also enter in degrees manually to two decimal points as long as the number divides evenly into 360°.

## Head Step Resolution

The Mac software does not support an override for the distance between each head step resolution.

# Troubleshooting

## Introduction

We will say this upfront... bad scans can happen. Anyone who has spent time scanning objects with a 3D scanner knows the frustration of setting up a scan, waiting for it to finish and then coming back when it's done only to find that there are giant holes of missing data or the object has fallen over mid scan. These setbacks can be overcome, however, if we keep in mind a few key principles.

To demonstrate how quick and easy it is to get exceptional results with the scanner, we thought we'd showcase a few indisputably bad scans, discuss the root causes, and highlight the best practices we employed to subsequently produce better scans of the same object.

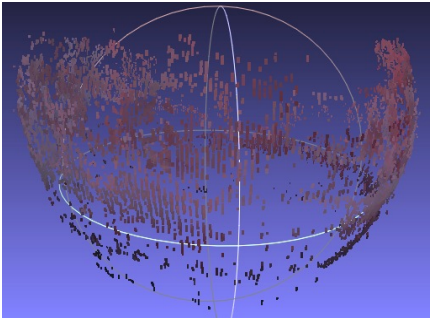
Topics covered are Lighting, Calibration, Missing Points, Errant Points, Strange scans, Missing scans, and Wrinkled Meshes.

## Bad Lighting

Proper lighting plays a key role in producing quality scans. Insufficient or improper lighting directly affects the data that the scanner picks up from the object. To illustrate this point, we scanned a Red Delicious apple under different lighting conditions.

For detailed information on proper lighting, see *The Importance of Lighting* (p. 42).

### Scan Result

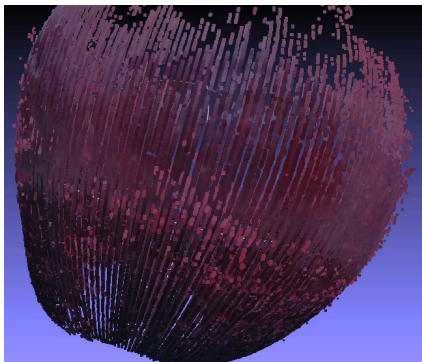


### Lighting Condition

#### Too Bright

12" from a window on a bright, sunny day

Note the gaps in the surface of the scan. The sunlight is overpowering the brightness of the lasers.



#### Too Dark

Dim overhead lighting

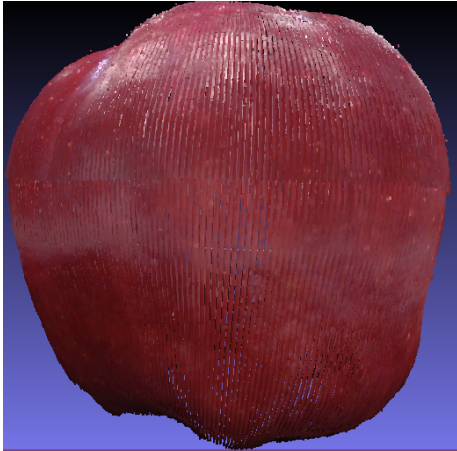
Note how dark the apple appears to be. The bottom of the apple appears black.



#### Bad Lighting Final Outcome

Meshed OBJ File Format  
(from too bright scan, above)

By keeping in mind the optimal lighting condition discussed in *The Importance of Lighting* (p. 42), we can produce much better scans of the exact same object, as seen on the next page.



Proper Lighting  
Point Cloud PLY File Format

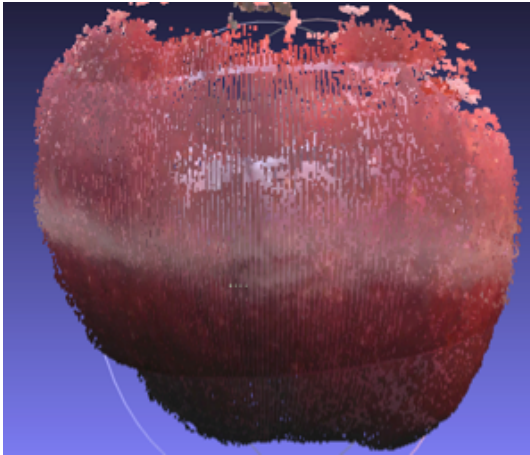


Proper Lighting Final Outcome  
Meshed OBJ File Format

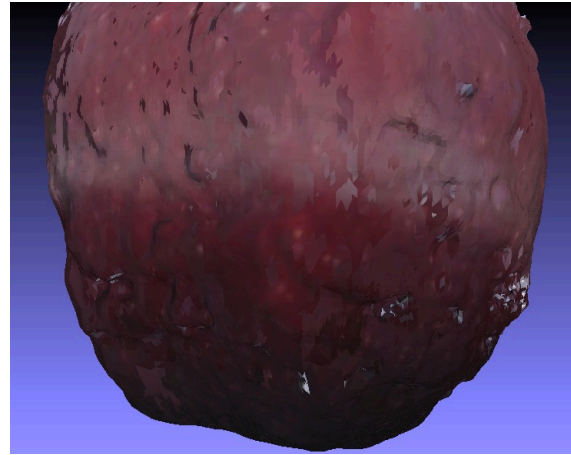
## Calibration

Ensuring your scanner is properly calibrated has a tremendous impact on your scan's geometric accuracy. Failure to calibrate directly impairs the accuracy of the scanned object's point cloud as it is being constructed, distorting the final scan. The solution is to calibrate and re-calibrate as needed.

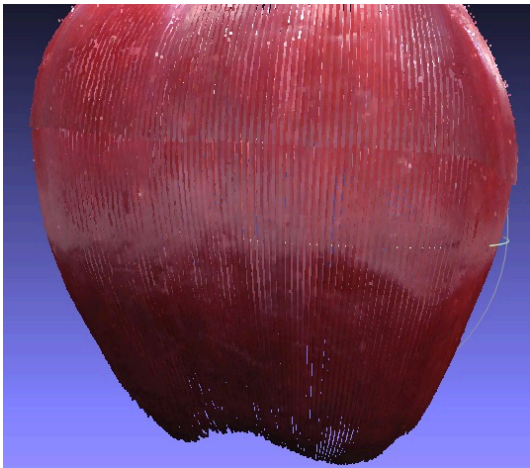
Even a small movement in the scanner's placement can affect its calibration and, consequently, its precision. Another good practice is to calibrate each time before starting to scan a very small object.



No Calibration  
Point Cloud PLY File Format



No Calibration Final Outcome  
Meshed OBJ File Format



Proper Calibration  
Point Cloud PLY File Format



Proper Calibration Final Outcome  
Meshed OBJ File Format

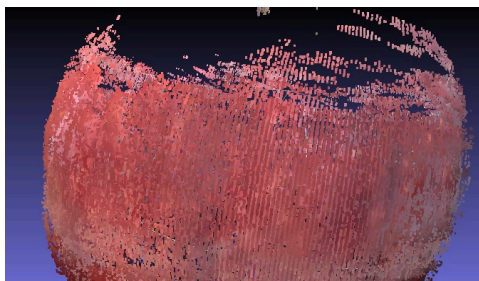
## Inadequate Exposure and/or Missing Points

Objects that have stark, contrasting colors necessitate different camera exposures and might prove difficult during automatic “tuning.” Tuning is the process by which the software determines the best camera exposure for capturing the color of the object and the best exposure for capturing where the laser is hitting the object.

Repositioning the object on the turntable so the camera can tune to a different side of the object might resolve this problem. A second option is to utilize the “High Contrast Scanning” function under the Advanced Scanning menu.

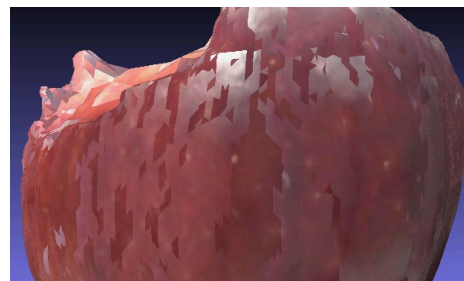
Some objects that have intertwined high contrasting colors can’t be scanned with one exposure. Dual exposure will yield impressively better results. Spending a few extra minutes manually setting the exposures for objects with stark color contrasts will likely lead to complete point clouds and watertight meshes. See High Contrast Scanning (p. 59) for more details.

In the following example, an attempt to scan an apple with a very light spot near the stem proved very difficult using automatic tuning.



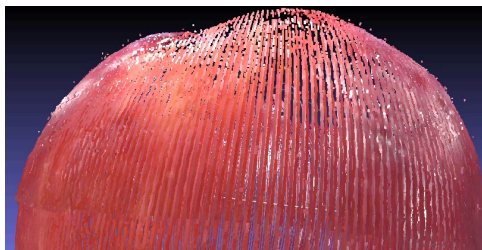
Bad Exposure  
Point Cloud PLY File Format

Note the area of the apple where the color was light wasn't captured at all.



Bad Exposure Final Outcome  
Meshed OBJ File Format

Note where the missing data led to the apple looking like a bite was taken from it.



Proper Exposure  
Point Cloud PLY File Format

Note the light spot on the apple has been captured.



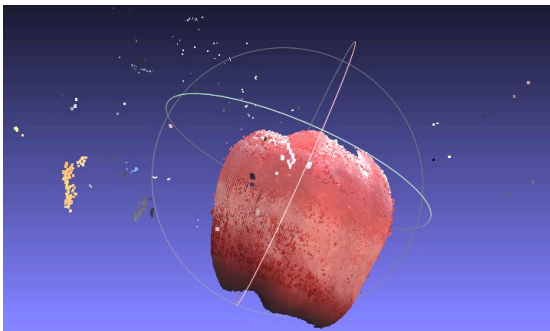
Proper Exposure Final Outcome  
Meshed OBJ File Format

Final mesh has better color and more accurate surface detail overall.

## Errant Points and/or Background Noise

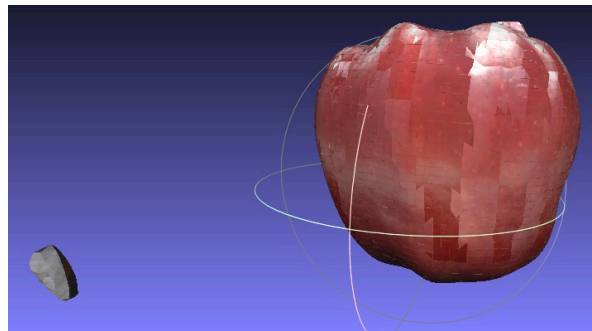
The scanner was designed with busy workplaces in mind: people walking by workspaces while scanning is underway, conversations happening over desks where scanners are working. A defining component and feature of our scanner is its “cleaning” functions that enable users to erase unwanted points. (See Cleaning a Scan (p. 23) for more detail on how to clean.)

It’s hard not to over emphasize the importance of cleaning your scans, especially given the fact it can be accomplished in a matter of seconds. These improved meshes, in turn, produce impressive 3D prints. Consequences of not cleaning before meshing can be seen below:



A Lot of Background Noise and No Cleaning  
Point Cloud PLY File Format

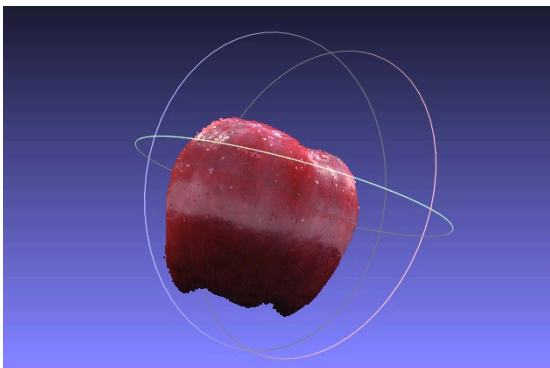
Note what looks like orbiting debris surrounding the apple.



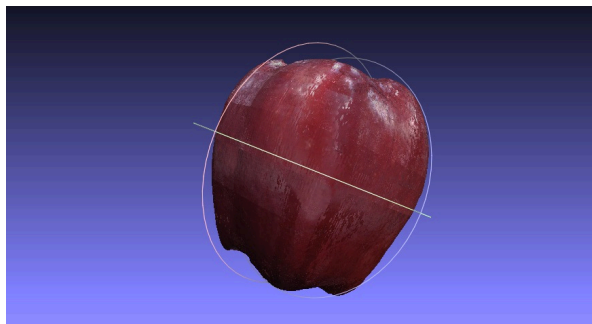
A Lot of Background Noise and No Cleaning Final Outcome  
Meshed OBJ File Format

Meshing without cleaning has left a foreign body included in the final result.

Proper and regular cleaning produces better meshes as shown below.



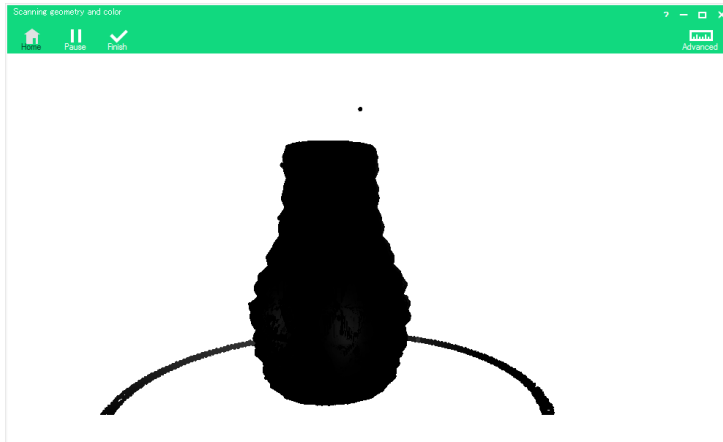
Proper Cleaning  
Point Cloud PLY File Format



Proper Cleaning Final Outcome  
Meshed OBJ File Format

## Black or Missing Scans

On occasion, users have started to scan an object only to have the object turn into a solid black mass and/or a single black dot.



A vase converted into a black mass during scanning.



A vase converted into a single black dot during scanning

These problems are typically a result of the user's computer not having enough memory or capacity to process the scan and mesh correctly, or because there is an issue with the graphics card driver.

For a memory issue, users can reduce the number of points displayed by following these instructions:

1. Close the software;
2. Go to c:\Program Files\Matter and Form\Scanner\EchoScan.exe (CONFIG file) and double-click the Config file;
3. Once the Config file is open, you will have access to the program settings. Note: Changing settings other than instructed may cause your scanner software to stop working properly. Please be careful when opening this file;
4. Locate "<appSettings>";

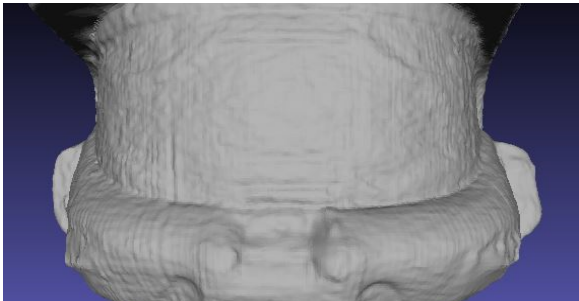
5. Find the line “<add key=“DisplayPointLimit” value=“3500000” />”. The number is the number points the software will display. The default is 3.5 million points.
6. Change “3500000” to a lower number (i.e. “1500000”). The range of usable display information is from a low of 1 million points (1000000) to a high of 5 million points (5000000).
7. Save the changes to the file, close the Config file and relaunch the MF software.
8. Open your point cloud files, mesh and combine using the new settings.

For a graphics card issue, we recommend users ensure they have the latest drivers installed on their respective computers. Find the manufacturer of the graphics card and search for the brand name and “graphics card driver” on Google to find the manufacturer’s website. Download the driver update directly from their site.

## Mesh Appears Wrinkled

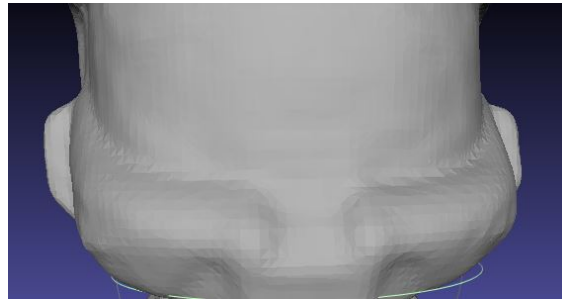
After completing a scan and attempting to mesh the point cloud, the vertical strands of points that comprise all point clouds could be visible on the mesh. Or, after meshing, the object might appear wrinkled.

This can happen when the octree depth is set too high relative to the quality of scan that was captured. In other words, a low quality scan typically doesn’t result in a great mesh, regardless of how high the octree depth is set. As a consequence, it may be better to set the octree depth and/or degree settings lower to yield a mesh with less ripples.



Wrinkled Mesh  
Octree Depth: 9  
Degree: 4

Note the orange peel-like surface.



Smooth Mesh  
Octree Depth: 7  
Degree: 3

While lacking crisp edges, this mesh is smoother.

Copyright © 2015 Matter and Form Inc. Matter and Form and the MF logo are trademarks of Matter and Form Inc. All rights reserved. No part of this publication may be reproduced in any form without the written permission of Matter and Form Inc.