

GT-220v2



Graphic Pen Display
User Manual
For Mac or Windows

Key Safety Measures

- 1) Please read all the specifications written in this manual and keep it for the future reference.
- 2) Please read all the notices and specifications on the monitor.
- 3) When cleaning, unplug the monitor. Do not use any cleanser, clean only with soft saturated cloth.
- 4) Please do not use accessories that are not recommended by the manufacturer.
- 5) Do not place the monitor near water sources such as bathtub, washbasin, sinks, washing machine, damp basement, swimming pool etc.
- 6) Prevent the monitor from fall or hit. Only placement tables that are recommended by the manufacturer or sold together with the monitor should be used. When installing wallboards and structures, please refer to the manufacturer's specification and use installation tools that are approved by the manufacturer.
- 7) The grooves and holes on the main case or its rear and bottom are designed for ventilation.
- 8) Prevent the monitor from overheating. Do not place the monitor on beds, sofas, carpets or in embedded devices to avoid blocking vents. Only power supplies shown on the nameplate can be used for the monitor. If you have questions about the power supply type that you are using, please consult the distributor of your monitor or the local power supply bureau.
- 9) This monitor is equipped with specific power plug according to your requirements when you bought it. If we do not have the power plug you have required, please buy suitable power plug in your country.
- 10) Power supply is the main electricity source for your monitor. Do not place anything on the AC adapter or the power wire. To protect your monitor, please switch off the power when it is not in use. During blackouts or when not in use for longer time, unplug the monitor from the socket in order to prevent surges impacting the monitor through the power wire.
- 11) Do not overload the socket or lengthen the power wire, it may lead to electric shocks.
- 12) Make sure no foreign bodies get inside the monitor trough grooves as to prevent short-circuit or fire. Prevent liquid from splashing on the monitor.
- 13) If the monitor has a breakdown, do not open the main case and try to repair it by yourself. Please ask a service for proper repair and maintenance.
- 14) When the following situations occur, please unplug the monitor and ask the service for full repair and maintenance:
 - A. The power wire or plug is damaged or worn.
 - B. There is liquid splashed on the main case.
 - C. The monitor has been drenched.
 - D. When the monitor cannot be used normally even though the specifications are closely referred to, please adjust the buttons designated in the manual because other improper adjustments may cause danger and it requires a great deal of repair and maintenance from a repairman to set the monitor right.
 - E. The monitor has fallen or the main case is damaged.
 - F. When obvious abnormalities occur to the monitor, a repair is needed.
- 15) While getting the components replaced, you are supposed to guarantee that the repairman is using the substitute components specified by the manufacturer. These substitute components must be same as original components in terms of functionality and performance. Unauthorized component replacement might cause fire, electric shocks or other dangers.
- 16) When a repair for the monitor is finished, the repairman should conduct routine safety inspection in order to guarantee that the monitor is in safe operational condition .
- 17) Plug is supposed to be placed near the monitor or in positions where it is easy to use.

Content

1. Brief Introductions	4
1.1 Packing List.....	4
1.2 Overview of the Monitor.....	4
1.3 Installation	6
2. Driver Interface Introduction	9
2.1 Control Interface.....	9
2.2 Pen Pressure Test.....	9
2.3 Pen Setting.....	10
2.4 Screen Setting.....	10
2.5 Calibration.....	10
2.6 Pen Pressure Sensitivity Settings.....	10
3. Rechargeable Li-ion Battery & Tip	13
4. Using OSD (Screen Image Adjustment)	15
4.1 Type A	15
4.2 Type B	17
5. Possible Breakdowns and Solutions	19
5.1 Possible Breakdowns Related to the Pen Display.....	19
5.2 Possible Breakdowns Related to Hand Input Function.....	19
5.3 Support TabletPC.....	20
6. Product Specifications	21
6.1 Specifications of the Monitor.....	21
6.2 Specifications of Pen Input	21

I. Brief Introduction

After opening the packing, please confirm that the following articles are in the packing box:

1.1 Packing List:

- LCD screen × 1
- AC adapter × 1
- VGA cable × 1, USB cable × 1,
Pen charging cable × 1, Power cable × 1
- Rechargeable pen × 1, Pen tips × 8, Pen clip × 1, Pen holder × 1
- Manual × 2 (For Windows and Mac)
- Driver software CD × 1



1.2 Monitor Overview

1.2.1 Front View

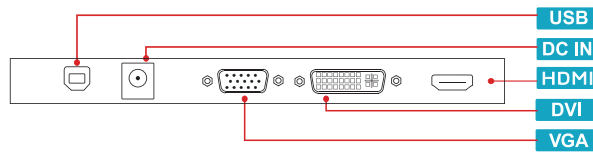
- 1) LED monitor and pen input operational area accept pen-input text and image information, and then the data is transmitted to the MAC.
- 2) LED pilot lamp
When the monitor is functioning properly, the pilot lamp will turn green.
When it's not functioning properly, the pilot lamp will turn red.

1.2.2 Push Buttons Overview



- 1) POWER: Switches the monitor on and off.
- 2) MENU: Button activates OSD (on-screen display) or conduct the adjustment confirmation.
- 3) +: Upward adjustment button. When the OSD is activated, adjustment functions upward, towards the right or increase.
- 4) -: Downward adjustment button. When the OSD is activated, Adjustment functions: downward, towards the left or decrease.
- 5) AUTO: Automatic adjustment button. When the OSD menu is active, press this button, it will return to previous menu the OSD.
When the OSD menu is inactive, will auto adjust display made to its utmost performance according to VGA settings.

1.2.3 Ports Overview



1) VGA input & USB output

First connect the VGA port with PC through which hand input screen can display the PC screen. Realization of hand input function requires USB port to be connected with the USB port of the PC.

2) DC IN port (power supply)

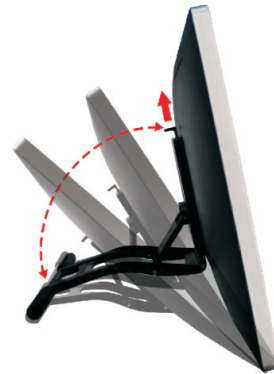
Plug the port of the AC adapter into this port and then connect the AC adapter to the nearest AC socket.

3) DVI&HDMI

Connect the DVI or HDMI port with PC through which hand input screen can display the PC screen.

1.2.4 The Adjustment of the Monitor Support

The angle of the monitor can be adjusted manually.



Remarks: The angel of the stand can be adjusted from 15°to 80°.

1.3 Installation

1.3.1 Operating System Requirements: Mac OS x 10.8.0 or later

1.3. Driver Installation

1.3.1 For Mac

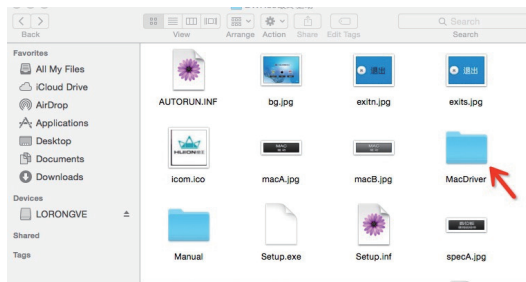
We kindly recommend downloading latest drivers form our official website since they are regularly updated.

Installation procedures:

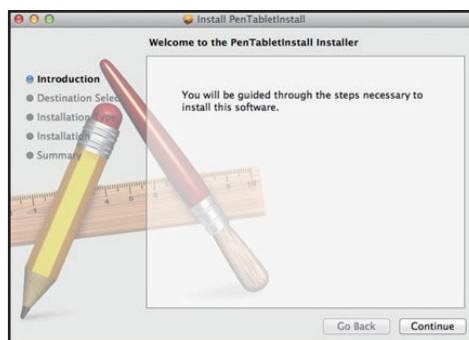
- a. Insert the disc in the CD-ROM drive. (If your MAC doesn't have a CD-ROM, please download the driver from our official website www.huion-tablet.com.)
- b. A disc icon will appear on your MAC. Double-click the icon to see the file structure.



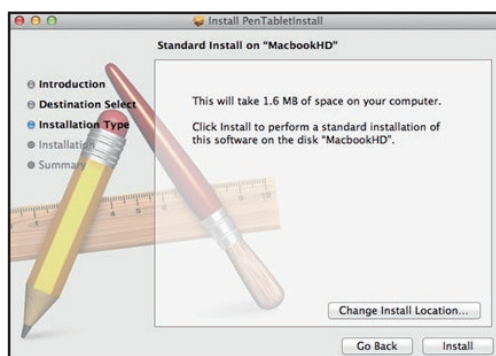
- c. Double-click the “MacDriver” folder to open it.



- d. Double-click the driver file and start the installation.
- e. Click “Continue” button on the welcome screen.



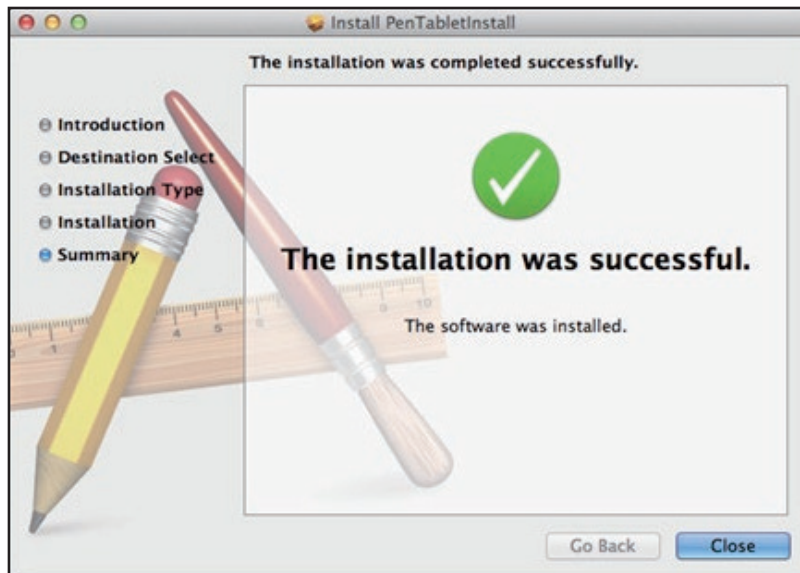
- f. Click “Install” button.



g. If prompted, enter your password.



h. Once the installation is complete, click "Close" button to exit the installer.

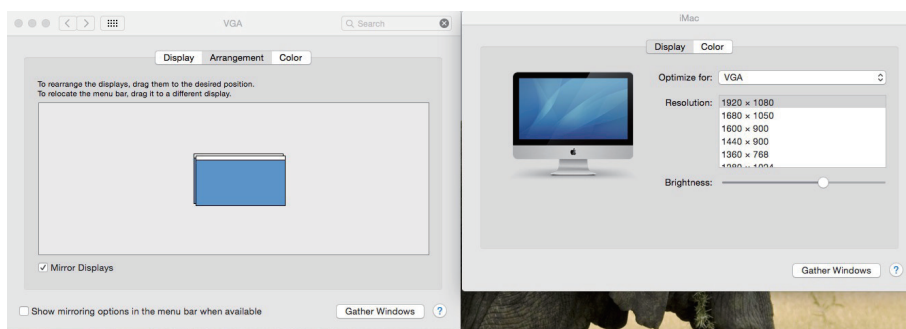


2.1.3. Hardware Installation

Connect your PC with the monitor by the cables enclosed according to your needs.

You must connect the USB cable if you want to use the pen input capabilities of the pen monitor.

- 1) After connecting the monitor, click "System Preferences", then double-click the monitor's icon to set up the resolution for your monitor. (1440x900)
- 2) You can mirror the monitors by check the Mirror Displays option. This will cause both monitors to display the same content. The resolution will be the highest common resolution available between the available monitors.



1.3.2 Software Installation For Win

Please close all painting software and antivirus software before driver installation.

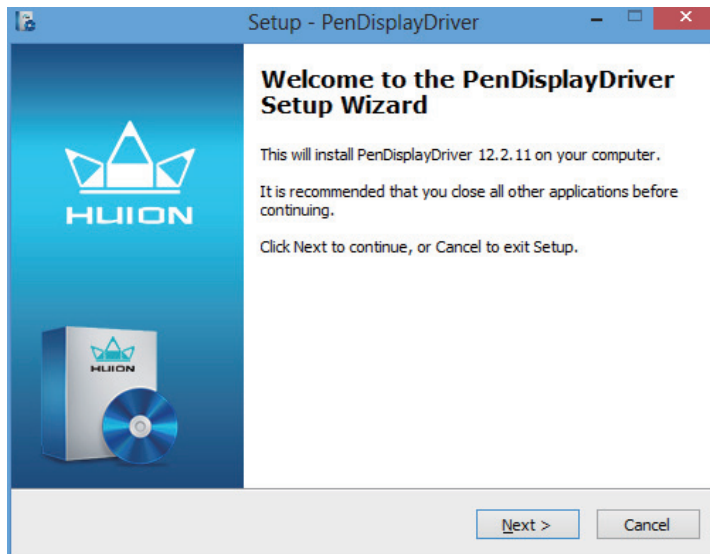
Please don't connect the USB cable before driver installation.

We kindly recommend downloading latest drivers form our official website since they are regularly updated.

1)If your PC operating system is Windows 7/8/8.1/10, you need to install pen input driver program.

Installation procedure:

- (1) Insert the driver disk into the CD-ROM drive of your PC and run "Setup.exe". Then the image will appear :
- (2) Click "confirm" after finishing the installation.



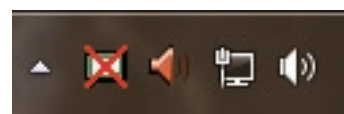
- 2) There will be a small icon at the lower corner of the screen after finishing driver installation (Picture 1). Or you can find the driver icon by clicking Start-All Applications-PenDisplayDriver (Picture 2). The pen display icon will be disabled if the USB cable is disconnected (Picture 3).
- 3) After driver installation, please connect the monitor with your PC by USB cable.



Pen display icon
Picture 1

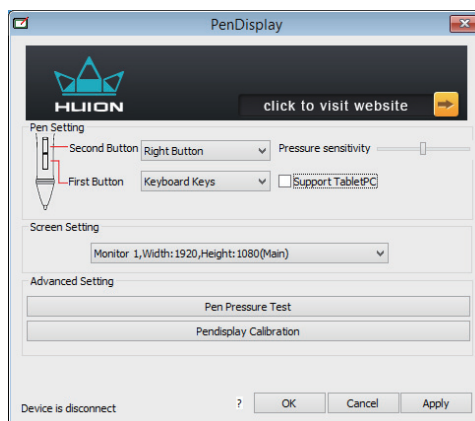


Picture 2



Picture 3

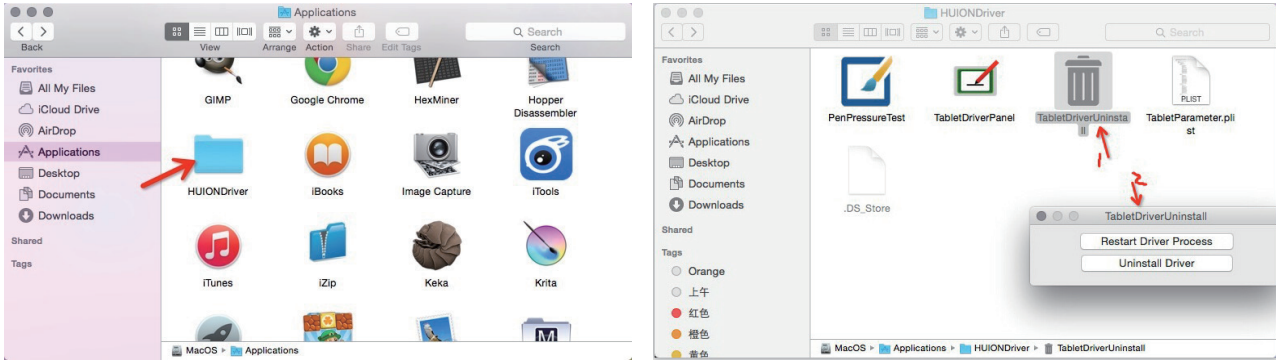
4) Click the small icon, enter into pen display configuration (for Windows8).



II. Driver Interface Introduction

The configuration dialog allows you to modify pressure sensitivity, monitor selection, customize the buttons, etc.

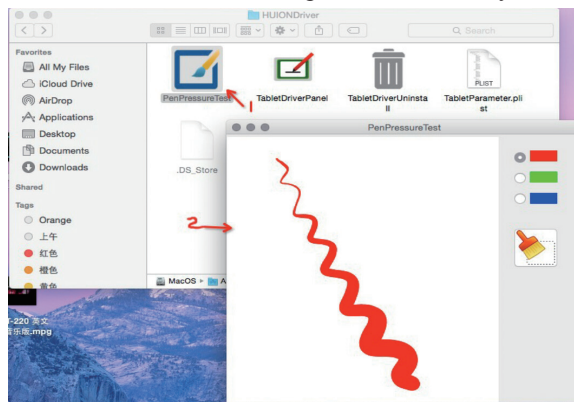
1. For Mac Go to Applications/HUION Driver



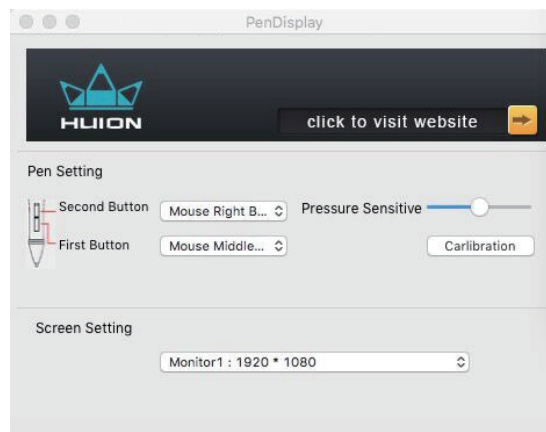
- a. **TabletDriverPanel** is to change settings of the pen display.
- b. **TabletDriverUninstall** allows you to restart the driver process or uninstall the driver.

1.2. Rechargeable Pen Pressure Sensitivity Test

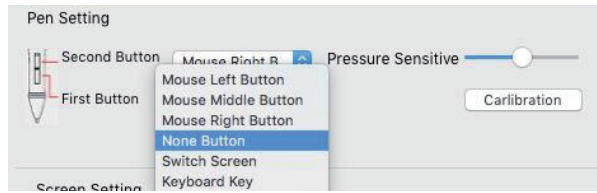
Click the Applications/HUIONDriver/PenPressureTest to test the pressure sensitivity.



1.3. Control Interface



1.4. Pen Buttons Settings

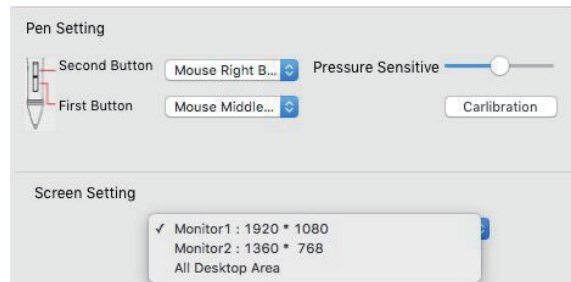


1.4.1 Key Functions

You can configure various mouse functions for the rechargeable pen (see the picture above). "Mouse Left Button, Mouse Middle Button, Mouse Right Button, None Button, Switch Screen and Keyboard key" on the corresponding right drop-down menu of the "Second Button and First Button".

Note:

- (1) "Left Button, Middle Button, Right Button" functions represent a normal mouse left, middle, right button functions.
- (2) When choosing "Middle Button", the corresponding pen button will have the same "press" function as a normal mouse, but it will not have the "scroll" function.

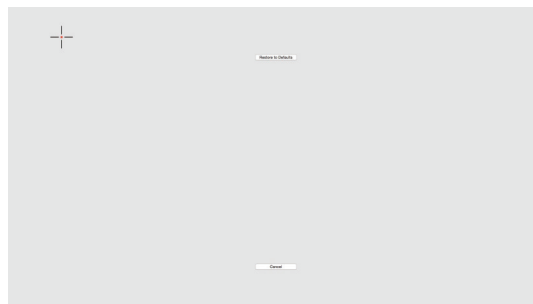


1.4.2 Screen Setting

When your computer is connected to two screens use the extended mode, you can choose the corresponding work area of the monitor in the setup screen area.

- 1. Screen 1: Choose this Screen, the cursor can only move accordingly in your main Screen.
- 2. Screen 2: Choose this Screen, the cursor can only move accordingly in your second Screen.
- 3. All Desktop Area: Choose this, the cursor can move from Screen 1 to Screen 2.

1.4.5 Calibration



Click the screen calibration button to enter the calibration interface. You will calibrate the screen automatically by using the pen to click the the cross shown on the screen.

By clicking "Restore to Defaults" button, it will restore the original calibration.

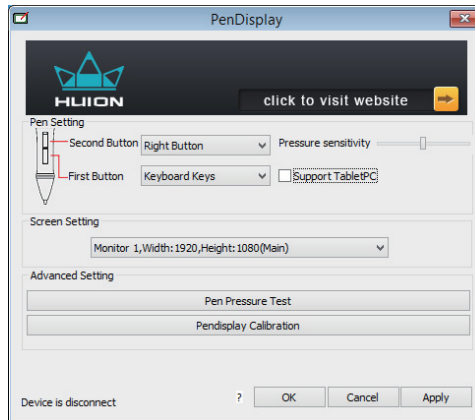
1.4.6 Pen Pressure Sensitivity Settings



Pressure sensitivity: Move the slider from left to right; it can be used to adjust sensitivity of the tip and the severity of the stroke.

2. For Win Driver Interface Introduction

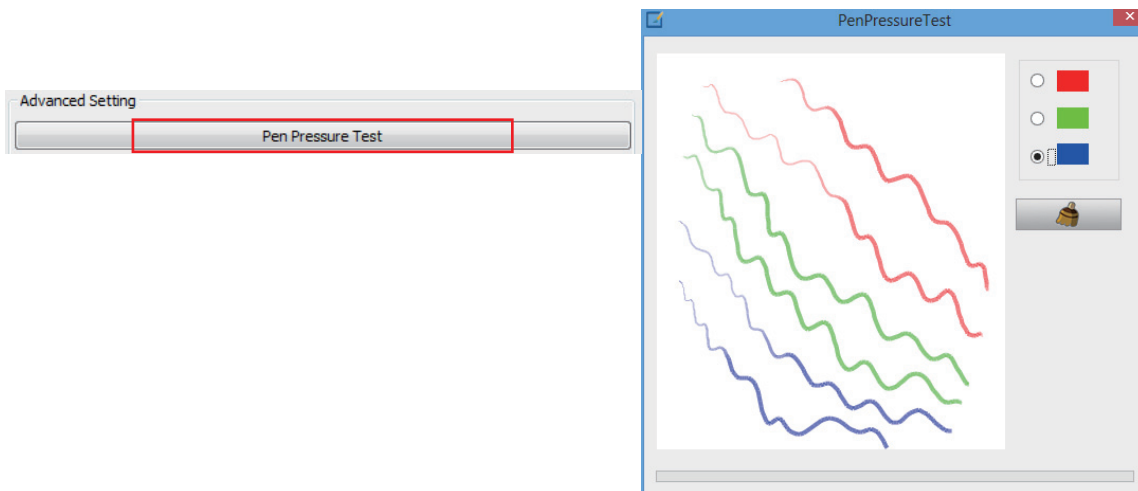
2.1 Control Interface



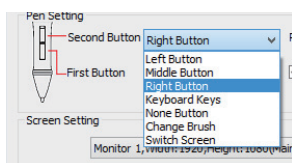
When you double click the Pen display icon () which normally appears in the system tray at the corner of the screen, you will see the control panel (pictured above). It will display driven-related information. Controlling the panel by enclosed rechargeable pen can set up functions for the rechargeable pen, regulate the pen pressure sensitive and modify the working area and shortcut keys.

2.2 Pen Pressure Test

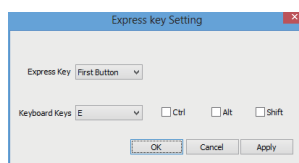
Click Pen Pressure Test into Pressure Sensitivity Testing



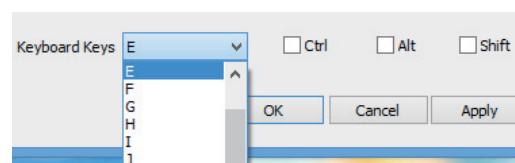
2.3 Pen setting



Picture 4



Picture 5



Picture 6

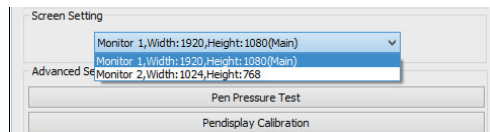
2.3.1 Key Functions

You can configure various mouse functions for the rechargeable pen (Picture 4): "Mouse Left Button, Mouse Middle Button, Mouse Right Button, None Button, Switch Screen and Keyboard key" from the corresponding right drop-down menu of the "Second Button and First Button".

Note:

- (1) "Left Button, Middle Button, Right Button" functions represent a normal mouse left, middle, right button functions.
- (2) When choosing "Middle Button", the corresponding pen button will have the same "press" function as a normal mouse, but will not have the "scroll" function.
- (3) When choosing the "Keyboard Keys", there will appear an "Express Key Setting" (as Picture 5-6). You can set up pen button functions in the same way like any "Express Key" or "Keyboard Key" functions.

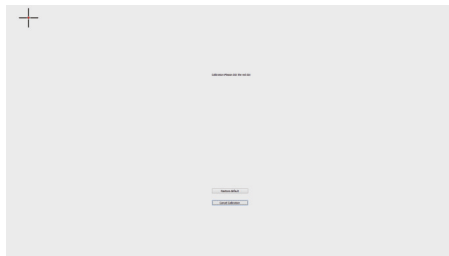
2.4 Screen setting



When your computer is connected to two screens in the extended mode, you can choose the corresponding work area of the monitor in the setup screen area.

1. Monitor 1: Choose this monitor, the cursor can only move accordingly in your main monitor.
2. Monitor 2: Choose this monitor, the cursor can only move accordingly in your second monitor.
3. All desktop area: Choose this, the cursor can move from Monitor 1 to Monitor 2.

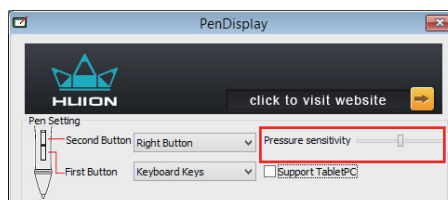
2.5 Calibration



Click the screen calibration button to enter the calibration interface. You will calibrate the screen automatically by using the pen to click the the cross shown on the screen.

By clicking "Restore to Defaults" button it will restore the original calibration.

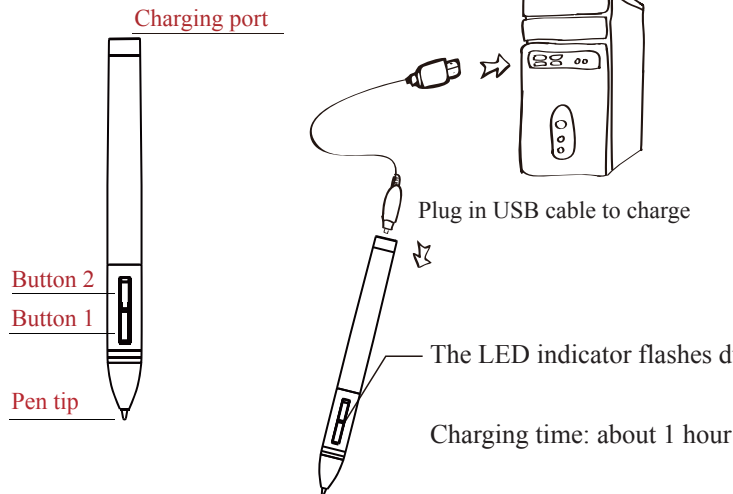
2.6 Pen Pressure Sensitivity Settings



Pressure sensitivity: move the slider from left to right; it can be used to adjust sensitivity of the tip and the severity of the stroke.

III. Pen Storage and Maintenance

1. Rechargeable Li-ion Battery Pen

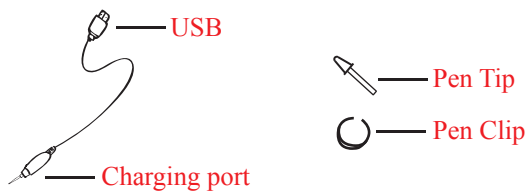


1. Tap on any surface with the tip of a pen to “wake it up”.
2. It will “auto sleep” if not used for a period of time.

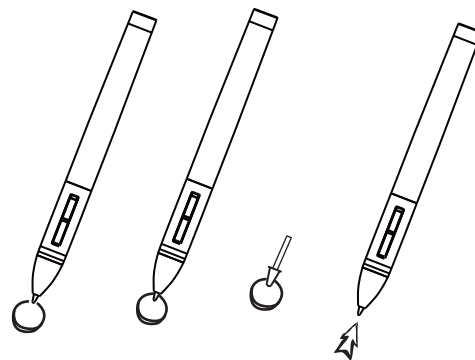
Note: If the line is unstable, it means you have to charge.

Replacing the rechargeable pen tip

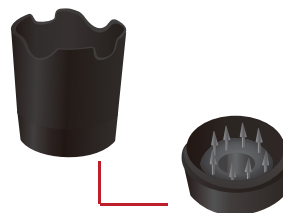
A: Pull out the pen tip from rechargeable pen by using a pen Clip that is inside the pen holder.



B: Push the pen tip in to check out if it is secured.



Gently unscrew the pen holder in the counter clockwise direction. You will see one pen tip replacement tool & 8 spare pen tips inside.



2. Pen Operation Usage Tips

Prior to using the pen, ensure it is fully charged (about 1 hour) by plugging it into a USB charging source with the original USB charging cable.

LED Indicator

The LED on the pen indicates the charge status with the following patterns:

LED glows red: Charging is in progress.

LED off: It is fully charged.

Note: LED indicator is located behind the buttons.

3. Usage Tips

(1) Double tapping

When you double tap with the pen (equivalent to the mouse double click), try to keep pen's tip away from the Pen Display's surface, or at least try to lift the pen tip as fast as possible before the second tap to avoid "triple click".

(2) Storing the rechargeable pen

While storing the rechargeable pen, make sure the pen tip does not touch anything, especially the pen stand in a cup or pen holder with the tip down.

Even though the possibility is low, constant stress on the pen tip might damage sensitive pen structure. Place the pen in the pen holder, or turn the pen tip pointing upward or horizontally with the pen tip free from any pressure by other objects.

(3) Using the pen without an ordinary mouse

You may install the rechargeable pen, a digital mouse, and a normal mouse on your computer at the same time. However, only one device will be able to work at once.

* Do not use more than two devices at the same time in case the screen cursor is jittering or not moving.

IV. Using OSD (Screen Image Adjustment)

1. Type A

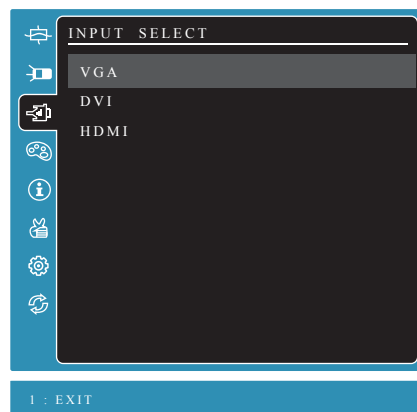
1.1 AUTO IMAGE ADJUSTMENT

1.2 CONTRAST/BRIGHTNESS



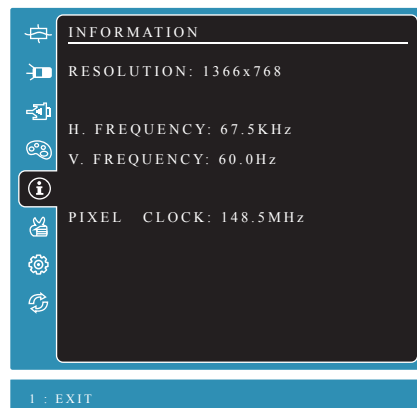
CONTRAST: Adjusting difference between darkness and brightness of the screen. Press the button "DOWN" and "UP" to reduce and increase contrast.
 BRIGHTNESS: Adjusting background brightness of the screen images. Press the button "DOWN" and "UP" to reduce and increase brightness.

1.3 INPUT SELECT



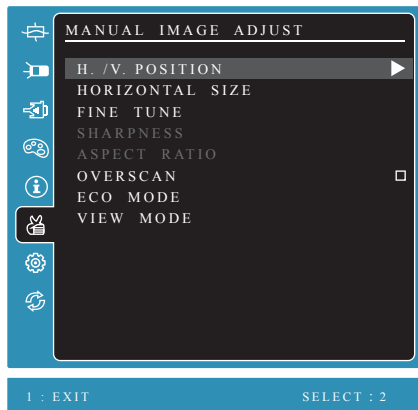
There are 3 signal inputs for you to choose: VGA, DVI, HDMI. The monitor will display the PC screen information according to your choice.

1.4 INFORMATION



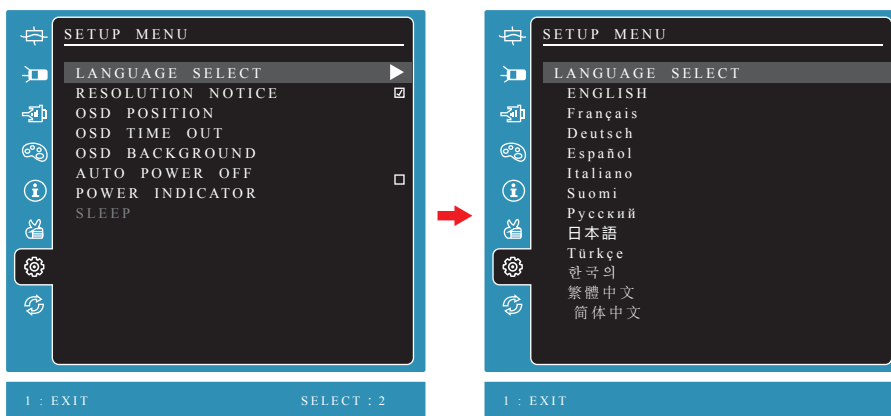
It will show the information of your monitor.

1.5 MANUAL IMAGE ADJUST



Press the button “DOWN” and “UP” to adjust H./V.POSITION and HORIZONTAL SIZE. Or you can choose “FINE TUNE” “OVERSCAN” “ECO MODE” “VIEM MODE” to adjust.

1.6 MANUAL IMAGE ADJUST



LANGUAGE SELECT: There are 12 languages for you to choose.

OSD TIME OUT: Reduce and increase the residence time of the OSD menu by using button “DOWN” and “UP”.

MEMORY RECALL: All the options are restored to the default positions.

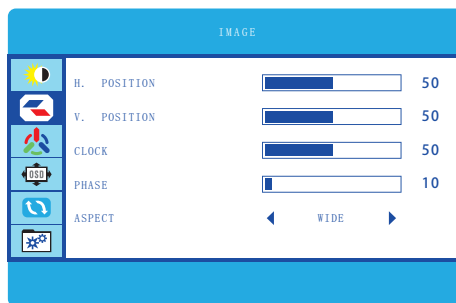
2. Type B

2.1 BRIGHTNESS



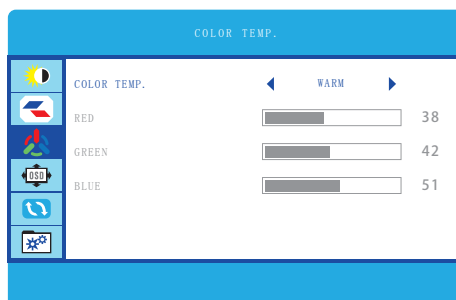
- 1) BRIGHTNESS: Adjusting background brightness of the screen images. Press the buttons “-” and “+” to reduce and increase brightness.
- 2) CONTRAST: Adjusting difference between darkness and brightness of the screen. Press the buttons “-” and “+” to reduce and increase contrast.
- 3) ECO: There are “STANDARD, TEXT, GAME, MOIVE” four modes for your choice.
- 4) DCR: Choosing “ON/OFF” to turn on/off Dynamic Contrast Ratio.

2.2 IMAGE



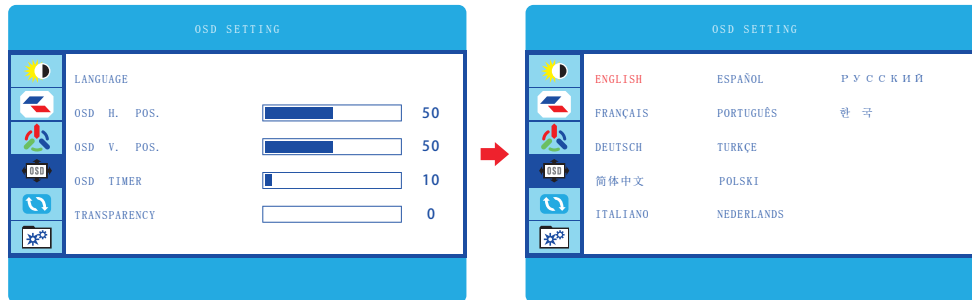
- 1) H. POSITION: Adjusting images left and right by using the buttons “-” and “+”.
- 2) V. POSITION: Adjusting images downward and upward by using the buttons “-” and “+”.
- 3) CLOCK : Adjusting the vertical blinking of characters on the screen.
- 4) PHASE: Adjusting the horizontal blinking of characters on the screen.
- 5) ASPECT: There are “WIDE” and “4:3” two modes for you to adjust the aspect of the screen.

2.3 COLOR TEMP.



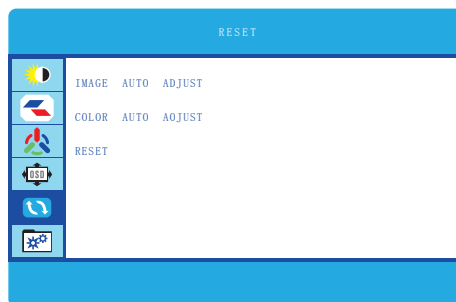
- 1) COLOR TEMP.: There are “WARM, COOL, USER” three models for your choice.

2.4 OSD SETTING



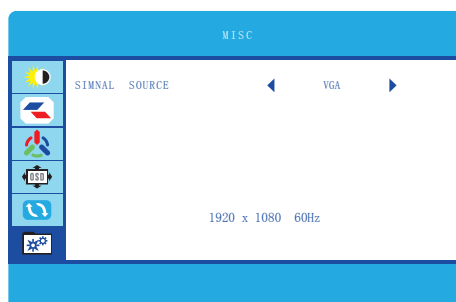
- 1) LANGUAGE: There are 12 languages for your choice, press “MENU” and “-” “+” to choose the language you need.
- 2) Vertical: Adjusting the OSD position downward and upward by using the buttons “-” and “+”.
- 3) Transparency: Adjusting the Transparency of OSD screen image.
- 4) OSD Time Out: Reduce and increase the residence time of the OSD menu by using the buttons “-” and “+”.
- 5) TRANSPARENCY: Press “MENU” then “-” “+” to adjust the transparency of OSD menu.

• RESET



- 1) IMAGE AUTO ADJUST: Press “MENU” to automatically adjust the image's horizontal / vertical position, focus and clock.
- 2) COLOR AUTO AOJUST: Press “MENU” to automatically adjust the image color balance.
- 3) RESET: Press “MENU”, all settings options will be back to the default setting.

• MISC



MISC: Display the current adjustment information.

V. Possible breakdowns and solutions

5.1 Possible Breakdowns Related to the Pen Display

Abnormal phenomena	Suggestions
The power indicator does not flash	<ul style="list-style-type: none"> *Whether the power is on or not? *Whether the power wire is connected or not? *Check the socket. *Replace the power wire.
The screen displays nothing	<ol style="list-style-type: none"> 1. Whether the power of the PC is on or not? If not, please refer to the PC user manual or other documents to solve this problem. 2. Please refer to 2/4 and correctly connect the RGB input signal wire. 3. If you connect the monitor with a laptop, please correctly connect the RGB signal wire after starting the laptop. In the option of display mode settings, switch to the external RGB display mode (There are different switch methods for different laptops. Please refer to the PC user's manual and other documents). 4. Whether the pilot lamp is green or not? If the monitor and the PC are in hibernation, please press the keyboard and mouse to restart the system. 5. Is the signal wire broken or bent? If so, please replace the signal wire.
Images are blurred	The best display effect is available with the resolution: 1440x900
Lack of colors	Check the signal wire of the monitor and confirm that the pin is not bent or fractured.
Images are not in the middle or improper in size	Adjust Clock and Phase or press the AUTO button for automatic setup.
There is chromatism in images	Adjust the RGB color or reselect color temperature.
Images jitter or ripple images appear	It is likely that there is anelectric equipment nearby that brings about electronic interference.

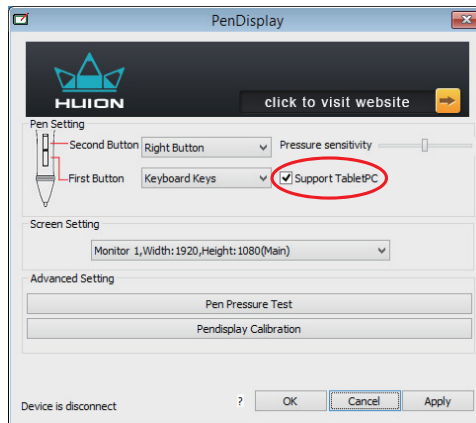
5.2 Possible breakdowns related to hand input function

Abnormal phenomena	Suggestions
The pen does not work	<ol style="list-style-type: none"> 1. If the driver is damaged or is not properly installed, please uninstall the driver and reinstall it. Please refer to 1.3.2. 2. Whether the power is exhausted or not? If so, please charge. 3. If the nib has got shorten due to wear and tear, please replace the nib. 4. Try restarting the PC and the monitor. 5. Try pulling out and inserting the USB wire.
Cursor movement is abnormal	Try pulling out and inserting the USB wire again or restarting the PC.
The side button of the pen doesn't work	When pressing the side button, please make sure that the nib doesn't touch glass surface and the distance between the nib and the surface is within 5mm.
There're great discrepancies in locations	Adjust the screen. Please refer to 2.5 for specific instructions.

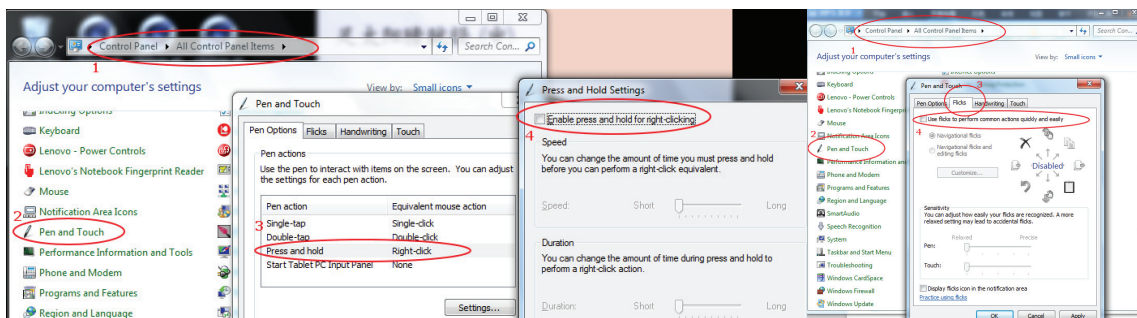
5.3 Support Tablet PC

Also called Electronic Ink Function, which is normally used for supporting pressure sensitivity under Office 2007, Journal or later version. For Sketchbook 6.0, Photoshop CC2014(or later) on Windows8 or later system, checking "Support TabletPC" is needed to support pressure sensitivity.

As for other drawing software, please read the software instruction carefully to see whether it supports windows TabletPC or not, and try to disable Support TabletPC if it is needed.



As the "Support TabletPC" checked, please turn off flicks to get a better using experience.



VI. Product Specifications

1. Specifications of the Monitor

Items		Specifications
Product Names		Pen input LCD
Monitor Features	Display Equipment	TFT LCD
	Effective Display Size	19-inch/409.8mm (H) x 255mm (V)
	Resolution	1440 x 900
	Dot Pitch	0.283mm x 0.283mm
	Display Colors	16, 700, 000 colors
	Viewing Angles	80°to the right , 80°to the left 70°upward and 70°downward
VGA input	Input	D-sub 15-pin(simulated RGB)
Environmental Requirements	Temperature	Operation: +5 - +40°C Storage: -20 - +60°C
	Humidity	Operation: 20 - 80%RH Storage: 5 - 95%RH
Wattage		Less than 36W during operation, less than 1W in the power-saving mode
Power Supply		12V=3A
Package Size		493(L) x 408(W) x 131(H)mm
Weight		3.6kg
Adjustable Range of the Support		15° — 80°
OS Compatibility		Windows 7/8/8.1/10 or later
Video Interface		VGA, DVI

2. Specifications of Pen Input

Pen Input Technique	Electromagnetic induction
Pen Power Consumption	300uA (max)
Pen Input Resolution	5080 lpi
Pen Pressure Sensing	2048 level
Accuracy	±0.5mm (center)
Report Rate	233 rps (Report Per Second)
Port	USB

Remarks: Changes in battery life depends upon the humidity and temperature in environmental conditions.



Shenzhen Huion Animation Technology Co., Ltd

Tel: +86-755-32998548

Fax: +86-755-23313505

Email: service@huion.com

Http: www.huion.com

Address: Building 28, Quater 4, HuaiDeCuiGang Industrial Park,
Fuyong Street, Bao'an District, Shenzhen, China.



FACEBOOK



WEBSITE