

Smart HD WiFi Camera



Quick Start Guideline

Please read it carefully before usage and save the manual for future use

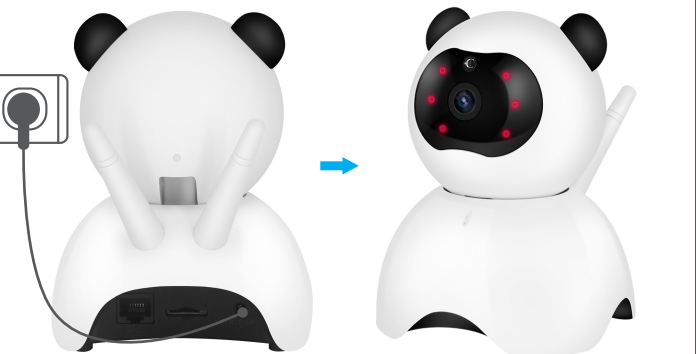
Download " HapSee " App

1. Please go to App store (Iphone) or google play store (Andriod phones) search and download " HapSee "
2. Scan the QR code to download " HapSee App "



Power on the camera

1. Please connect the adpater and cable to camera to power on the camera.
2. After power on the camera, the camera will be in a red light. And you will hear a music. Then you are ready for connection

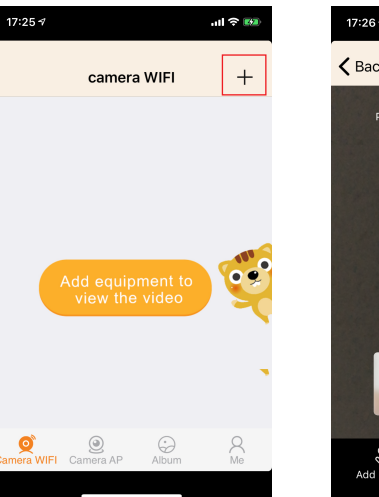


Connect with the camera

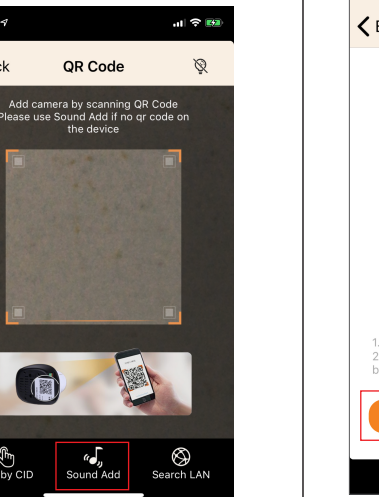
Tips: Please make sure your wifi is 2.4G not 5G
After hear a music from camera, please open HapSee to connect

Add new device

1. Click " + " (Figure1)
2. Click " Sound add " (Figure2)

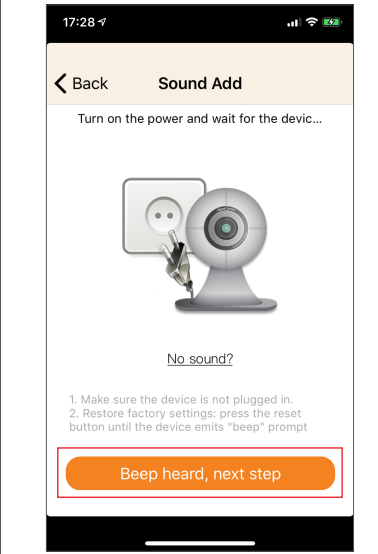


(Figure1)

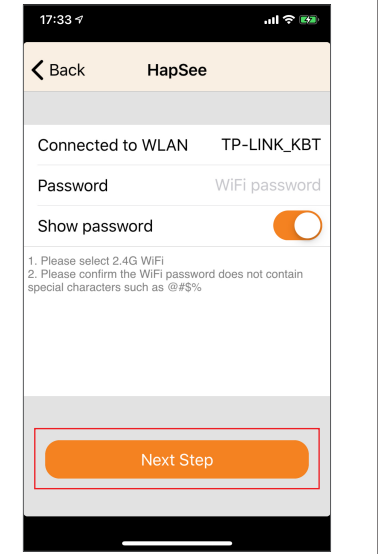


(Figure2)

3. 1 mins After heard the power on music, you will heard a beep. Then click " Beep heard, next step " (Figure3)
4. Select your WIFI and input your Wifi password Then click " Next Step " (Figure4)

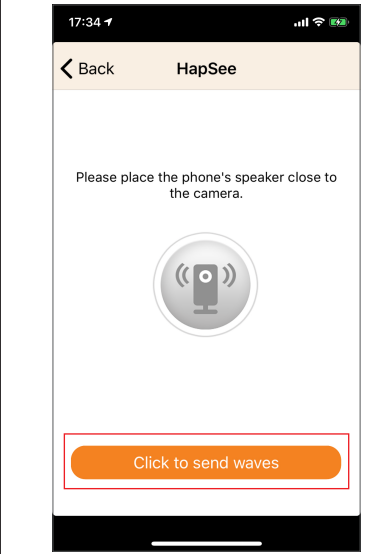


(Figure3)

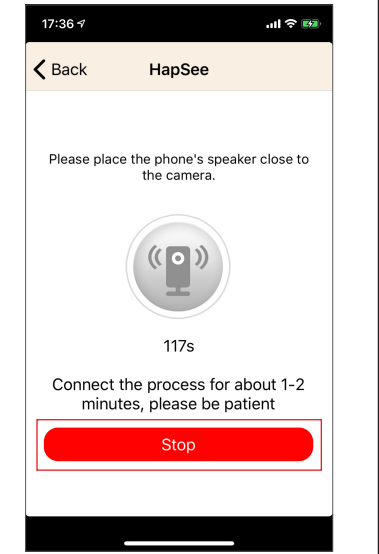


(Figure4)

5. Please turn on your phone volume and place the phone close to the camera, Then " Click to send waves " (Figure6)
6. It will take 1-2 minutes to connection, please don't move your phone (Figure5)

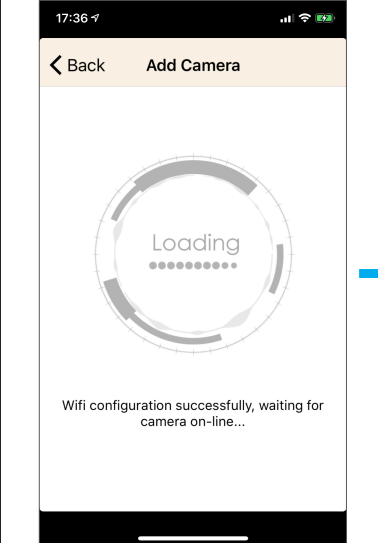


(Figure5)

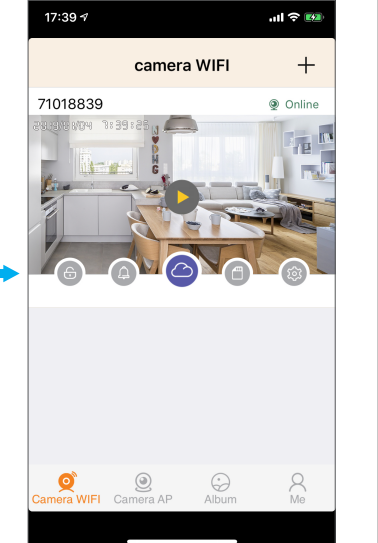


(Figure6)

7. After connected successfully. It will be shows as the picture (Figure7)



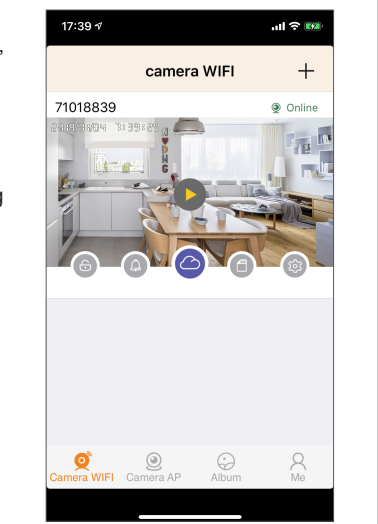
(Figure7)



(Figure7)

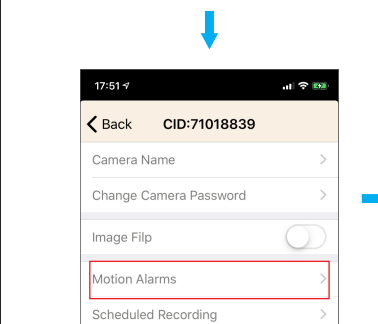
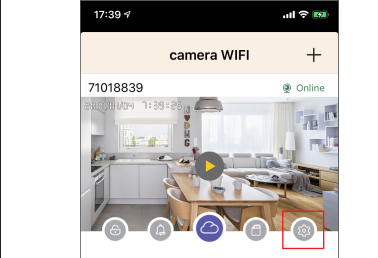
Then you could check your camera online.

- ▶ Watch the video now
- ⚙ Settings for Motion Decion, Push Alert, Time&Date, Recording Scheduled
- 📁 Alarm Video and Recording Video checking in SD card
- ☁ You could purchase Cloud video if you don't use SD card for record
- 🔔 Any Alert message will be here if any motion have been detected
- 🔒 It will be alarmed once motion detected. if you enable this function (It only used After you enable the motion detection, push alert and Buzzer.)



Motion Detection & Push alert setup

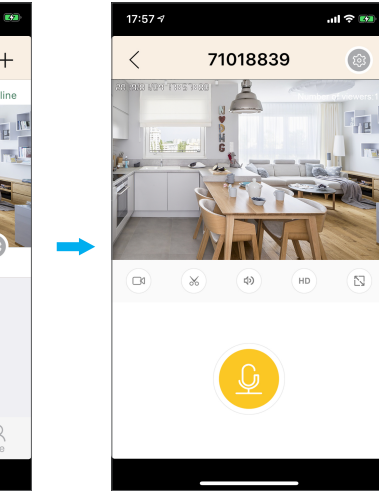
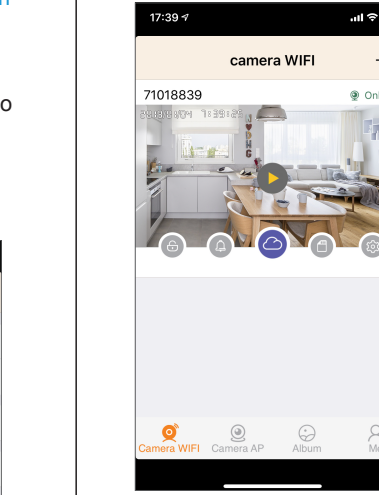
- Please go the " Settings " - " Motion Alarms " - Turn on " Motion Detection ", " Push Alert " and " Buzzer "
- And make the Sensitivity to be high. Then " Save "



Then you will get the alert picture or video message.
(Picture and Video need to be inserted with SD card or buy cloud service to stock and play)

Talk with Camera

After click " ▶ " to play the video, then you could click the speaker to talk

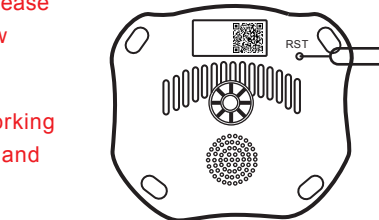


	Recording		Screenshot		Volume or Mute
	HD or FHD		Picture Enlarge		Speaker

Camera Setting

If the camera are failed connection, Please click the reset button at the bottom of the camera with a pin

- If the connection failed, please reset it firstly before new connection
- If the camera are not working properly, please reset it and connected again



Setup Video Insturction

1. Scan Below QR code to watch it
2. Or Go to Youtube and Search "NewPal Panda Camera" to watch it



NewPal After-Sales Support
Email: support@newpal.shop
Tel: +86-75582992189 www.newpal.shop