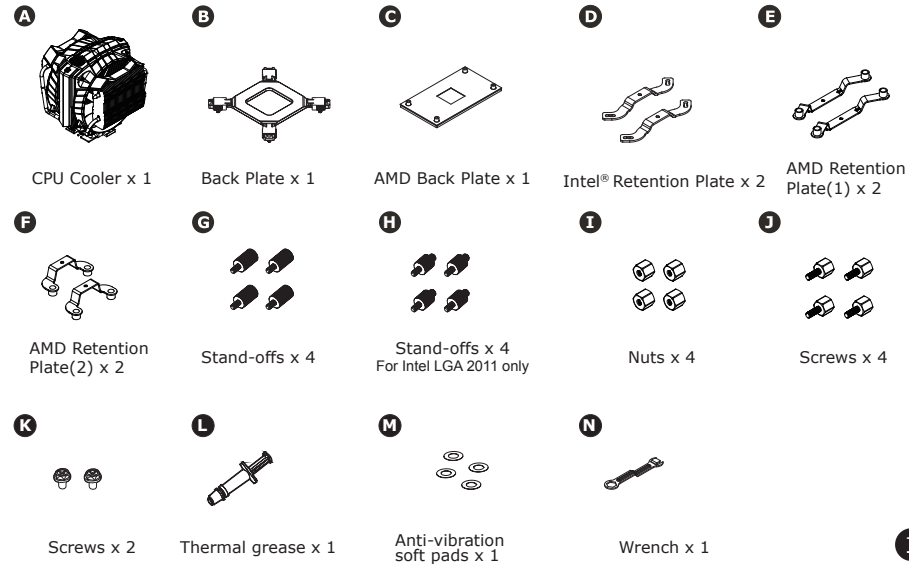
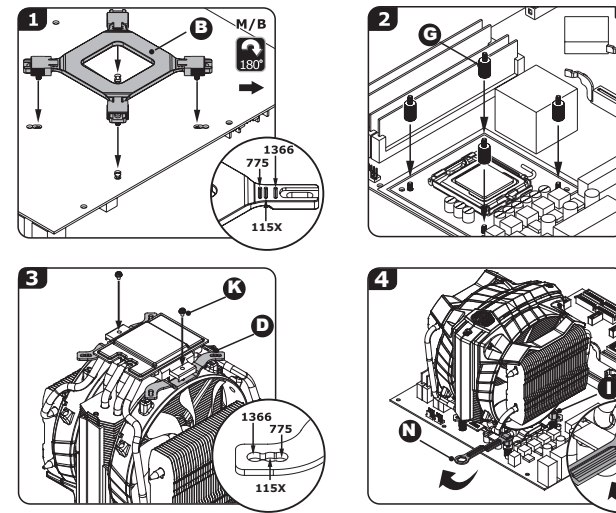


Make sure the following items are included. If any item is damaged or missing, contact your retailer.

Parts

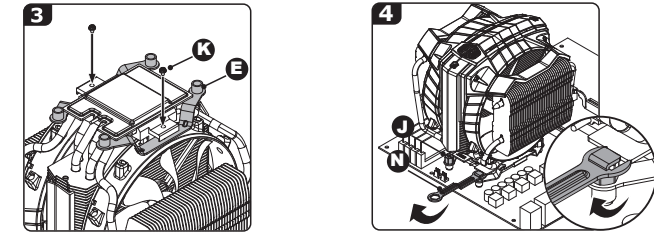


Intel® Socket LGA 1366/1151/1156/1155/1150/775

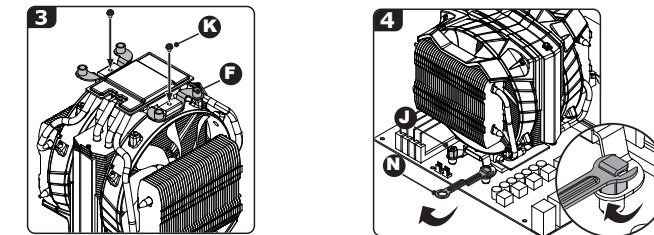


1. Select proper backplate according to your motherboard platform.
2. Fasten 4 stand-offs on the backplate screw.
3. Select proper mounting brackets corresponding to the Intel socket. Fasten bracket on the cooler with 2 screws.
4. Fasten the cooler to the motherboard with the help of the supplied wrench.

AMD Retention Plate (1)

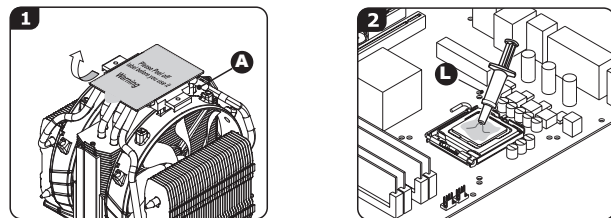


AMD Retention Plate (2)



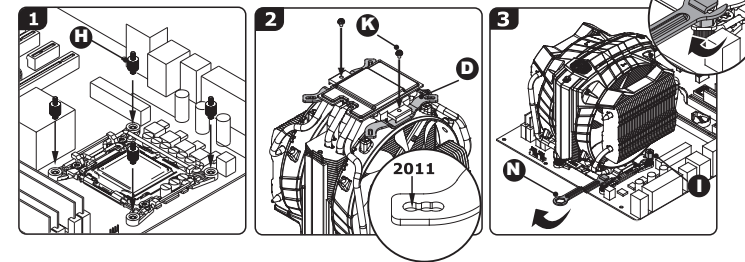
1. Remove screws and plastic bracket from AMD motherboard.
2. Place 4 anti-vibration soft pads on screw holes next to CPU socket.
3. Fasten AMD bracket on cooler with 2 screws.
4. Fasten the cooler to the motherboard with the help of the supplied wrench.

Installation Procedures



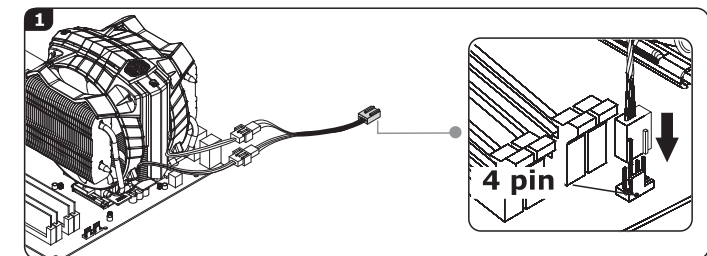
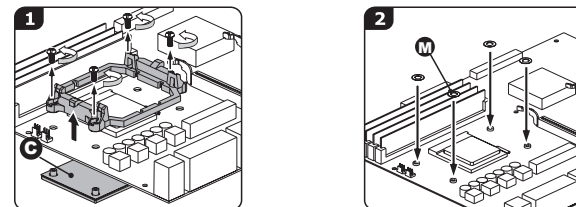
1. Before use, please remove the protective layer on the bottom of the cooler.
2. Apply a thin layer of thermal grease onto the surface of the cooler base.

Intel® Socket LGA 2011/2011-3



1. Fasten 4 stand-offs on the backplate screw.
2. Select proper mounting brackets corresponding to the Intel socket. Fasten bracket on the cooler with 2 screws.
3. Fasten the cooler to the motherboard with the help of the supplied wrench.

AMD Socket FM1/FM2/AM3+/AM3/AM2



1. Connect the power cable.

* Pictures are for reference only.
* Information in this document is subject to change without notice.

In no event shall Cooler Master be liable for any special, indirect, incidental or consequential damages arising from any defect or error in this manual or product.

Live Help
<https://account.coolermaster.com>

For the most updated information, please visit our official website: <http://www.coolermaster.com>

