



Wansview Full HD

720P IP Camera K2



User Manual

Revised 2^{ed} December, 2016

Contents

Welcome.....	4
Important Security Warning.....	4
Important Safeguards and Warnings.....	4
1. Features and Specifications.....	6
1.1 Product Profile.....	6
1.2 Features.....	7
1.3 Uses.....	7
1.4 Specifications.....	7
1.5 System Requirements.....	8
2. Camera Management with Smartphones/Tablets.....	8
2.1 Wansview App for iOS and Android.....	9
2.2 Live Streaming.....	11
2.3 Local Picture and Record.....	12
2.4 SD/Micro SD Card Record and Playback (Not support).....	13
2.5 Alarm Setting.....	15
2.6 Advanced Settings.....	15
2.6.1 Wi-Fi Setting.....	16
2.6.2 User Management.....	16
2.6.3 Time Setting.....	17
2.6.4 SD/TF Setting (Not support).....	18
2.6.5 OSD Setting.....	18
2.6.6 Reboot Camera.....	19
2.6.7 About Camera.....	20
3. Web Access.....	20
3.1 Settings.....	20
3.1.1 Network Installation.....	27
3.1.2 Plugin Installation.....	21
3.2 Live Streaming and Recording on PC.....	23
3.3 Playback Video.....	24
3.4 Set Up.....	25
3.4.1 System.....	25
3.4.2 Network.....	26
3.4.3 Video and Audio.....	31
3.4.4 Security.....	33
3.4.5 Alarm - Motion and Audio Detection.....	36
3.4.6 Storage.....	37
3.4.7 Log.....	39
4. Manage Camera with other Apps and Software.....	40
5. Windows PC Software Access.....	42
5.1 About iSmartViewPro.....	42
5.2 Operational Requirments.....	42

5.3 iSmartViewPro Installation.....	42
5.4 iSmartViewPro Operation.....	42
5.4.1 CMS Interface.....	42
5.4.2 Access to camera.....	43
5.4.2.1 Add Camera.....	43
5.4.2.2 Edit/Delete Device.....	44
5.5 Play Video.....	44
5.6 System Setting.....	46
5.7 Local menu bar.....	47
6. MAC Software Access.....	48
6.1 About iSmartViewPro.....	48
6.2 Operational Requirments.....	48
6.3 iSmartViewPro Installation.....	49
6.4 iSmartViewPro Operation.....	49
6.4.1 Interface.....	49
6.4.2 Device Library.....	50
6.4.3 System Settings.....	52
6.4.4 Video Library.....	52
6.4.5 Camera Log.....	52
7. FAQ.....	53
7.1 Compatibility Setting for Internet Explorer.....	53
7.2 Plugin Issues.....	53
7.3 Install IE Tab for Chrome 43.....	54
7.4 Install IE Tab for Firefox 42.....	55
7.5 Port Forwarding.....	56
8. Warranty.....	59

Welcome

Thank you for purchasing Wansview K2 Full HD IP Camera.

For any question and product updates please contact us:

1: By email:

US: service@wansview.com

service2@wansview.com

UK: service3@wansview.com

DE: info.de@wansview.com

2: By Skype:

US: [service2@wansview.com](https://www.skype.com/people/service2@wansview.com)

UK: [service3@wansview.com](https://www.skype.com/people/service3@wansview.com)

DE: [info.de@wansview.com](https://www.skype.com/people/info.de@wansview.com)

or check FAQ's at the end of this User Guide.

3: Contact us by Facebook



www.facebook.com/WansviewClub/

4: Contact us by https://www.youtube.com/channel/UCPRXQcIkLsMAWQtpGxVx_jw



Or scanning the QR code to enter our Youtube channel.

Important Security Warning

In order to keep your Wansview camera secure and prevent unauthorized access, please make sure to follow the steps below:

1. The camera has always the latest firmware installed. If we update the firmware, we upload it on www.wansview.com/Service/download/
2. Change the default password for your camera. We suggest that your password is more than 8-10 characters and contains a combination of lowercase characters, uppercase characters and numbers.

Important Safeguards and Warnings

1. Electrical Safety

All installation and operation should conform to your local electrical safety codes.

We assume no liability or responsibility for any fires or electrical shock caused by improper handling or installation.

2. Transportation Safety

Heavy stress, violent vibrations, and excess moisture should not occur during

transportation, storage, and installation of the device.

3. Installation

Handle the device with care. Keep the device right side up.

Do not apply power to the camera before completing installation.

Do not place objects on top of the camera.

4. Repair Professionals

All inspection and repair work should be done by qualified service engineers.

We are not liable for any problems caused by unauthorized modifications or user-attempted repair.

5. Environment

The camera should be kept in a cool, dry place away from direct sunlight, flammable materials, explosive substances, etc.

This product should be transported, stored, and used only in the specified environments as stated above.

Do not aim the camera at a strong light source, as it may cause overexposure of pictures, and may affect the longevity of the camera's sensors.

Ensure that the camera is placed in a ventilated area to prevent overheating.

6. Operation and Maintenance

Do not touch the camera sensor or lens directly.

To clean dust or dirt off of the lens, use an air blower or a microfiber cloth.

7. Accessories

Be sure to use only the accessories recommended by the manufacturer.

Before installation, please open the package and check to ensure that all of the components are included.

Contact us if anything is broken or missing in the package.

8. Battery Drainage and Data Consumption

Please remember to exit the app after use, to prevent battery drainage and data consumption.

9. Compliance

FCC, CE, ROHS

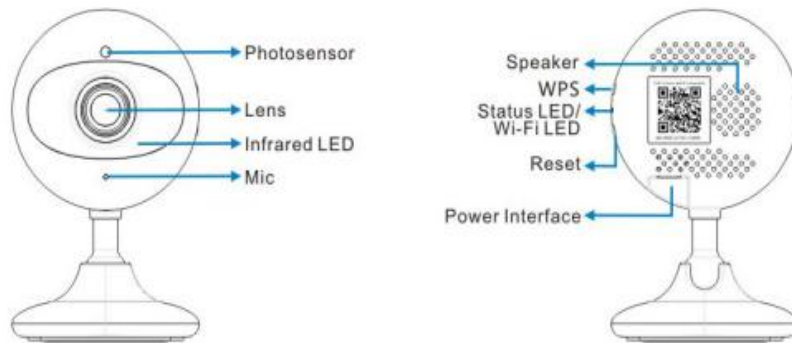
1. Features and Specifications

The Wansview HD IP Camera is an integrated indoor IP Camera developed specifically for network video applications.

1.1 Product Profile

The Wansview HD IP Camera comes with 4 PCS IR LED , a CMOS Sensor, and built-in Microphone with 120 degree viewing angle.

Front View/ Rear View



Packing List

Please make sure you received all items including the camera accessories as follows:

Package List



Note: Please contact us immediately if there are any damaged items or if the package is short of any of the accessories listed above.

1.2 Features

- 720p Full HD Video at 30fps
- Live streaming
- Night vision distance up to 20 feet
- 120 degree viewing angle
- Real plug and play, easy set up in 5 minutes
- One key WiFi configuration via mobile app

1.3 Uses

- Home Security
- Business Security
- Entryway Monitoring
- Baby Monitoring
- Pet Monitoring
- Elderly Parents

1.4 Specifications

Hardware Features	
Interface	WI-FI Support Power Interface Built-in Microphone and speaker WPS/Reset Button 4 infrared LED, 7m distance
Image Sensor	1/4" CMOS Sensor
Display Resolution	1280*720/640*360
Lens	f=2.5mm,F=2.0 View angle:120°
Dimension	60*60*99.3mm
Power Input	5V DC, <3W
Wireless Features	
Wireless Speed	IEEE802.11b/g/n 150Mbps
Operating Frequency	2.4 GHz
Security	64/128-bit WEP, WPA/WPA2,WPA-PSK/WPA2-PSK
Software Features	
Protocols & Standards	TCP/IP, DHCP, FTP, SMTP NTP, UPNP,HTTP, UDP/IP DDNS P2P
Image Compression	H.264/MJPEG
Image Settings	Image Settings: Saturation, brightness, contrast adjustable through client software or web browser
Maximal Frame Rate	30fps
Code rate	32kbps ~ 2Mbps
Account permissions	Three Level
Manage Software	P2P View client software (support Android, iPhone), IP / DDNS View client software (support Android,iPhone), PC centralized control and management platform
Audio	Two Way
PC Requirements	CPU 2.0GHz or above (suggested 3.0GHz) Memory Size 256MB or above (suggested 1.0GHz) Display Card 64M or above Windows 8,7,XP,Mac OS
SmartPhone requirements	Android version 2.2 and above; iOS version 4.3 and above; Windows Phone uses browser to view or the third party APPs.
Others	
Package Contents	One IP-Camera One Warranty card One Quick Guide
Temperature	Operate Temper: -10℃ ~ 40℃ Storage Temper: -40℃ ~ 70℃
Humidity	Operating Humidity: 10% ~ 90% Storage Humidity: 3% ~ 90%
Certificates	CE,FCC

1.5 System Requirements

- An iOS mobile device or
- An Android mobile device or
- A Windows PC/MAC.
- An email address for receiving alert notifications
- A 2.4 Ghz Wi-Fi network (name and password) and high speed Internet connection (DSL, Cable, FIOS) with a minimum 1 Mbit/sec upload speed.

Before installation please check your internet speed. Get your Wi-Fi username and password and if they contain the special characters "&" and ', please remove them before set-up (change password). Set WPA2-PSK (AES) Encryption, channel 6 and check if the DHCP switch is on. Follow this link to learn how to access your router: www.wikihow.com/Access-a-Router.

Position your camera in 50ft/15m distance from the router and close to an DC Plug. The included power cord is 9.8 ft long. If you need a longer power cord please contact us to get advice. Users can extend Wi-Fi signal with Wi-Fi extenders and get a longer power cord, if needed. Check the quality of the video before final mounting. For indoor installations, the range might be less if metal objects or thick walls and ceilings are between the camera and the router. Quality is affected also by the number of devices connected to the network and by interferences from other networks/devices. If video quality is not good, we advise to position the camera closer to the router.

Users can place indoor cameras in protected outdoor areas (such as a covered porch) as long as it remains dry and within its operating temperature range of -10 to 50 degrees C. The camera is not waterproof and any exposure to moisture and/or temperatures outside the operating range will void our one-year limited warranty. Users can guard outdoors by placing the camera behind a window, making sure to disable IR Leds and open the outdoor lights.

The Wansview Camera is a P2P camera as long as the camera is connected to the internet. Users can view the camera from smartphones/tablets or PC, wherever they are using cellular data or Wi-Fi connections. If users don't want to use the internet to access the camera, and choose to access only in their own private network/LAN, we can supply a tool which can disable P2P and DDNS functionalities. Please contact our customer service

2. Camera Management with Smartphones/Tablets

Users can manage the camera from smartphones/tablets (chapter 2) and web browsers (Chapter 3). Mobile users can manage the camera with our proprietary apps and plugins or with other popular apps like (chapter 4):

- tinyCam Monitor by Tinsolution LLC (<http://tinycammonitor.com>)

www.wansview.com

- Blue Iris by Perspective Software (<http://blueirissoftware.com>)
- Sighthound Video (<https://www.sighthound.com>)
- iSpyConnect (<http://www.ispyconnect.com>).

For Businesses we provide also local software to be installed in the PC. Please contact us if you are interested in it or visit our website .

<http://www.wansview.com/Service/download/23.html>

Performance and functionalities vary according the software/app. If you are not satisfied with a particular function, try to manage it with another software/app. Please get in touch with our friendly customer service for any advice.

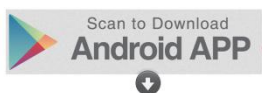
2.1 Wansview App for iOS and Android

Step 1 Download



- Go to the App Store or Google Play and search “Wansview”

Or scan the QR code below to get the app.



Free




Free

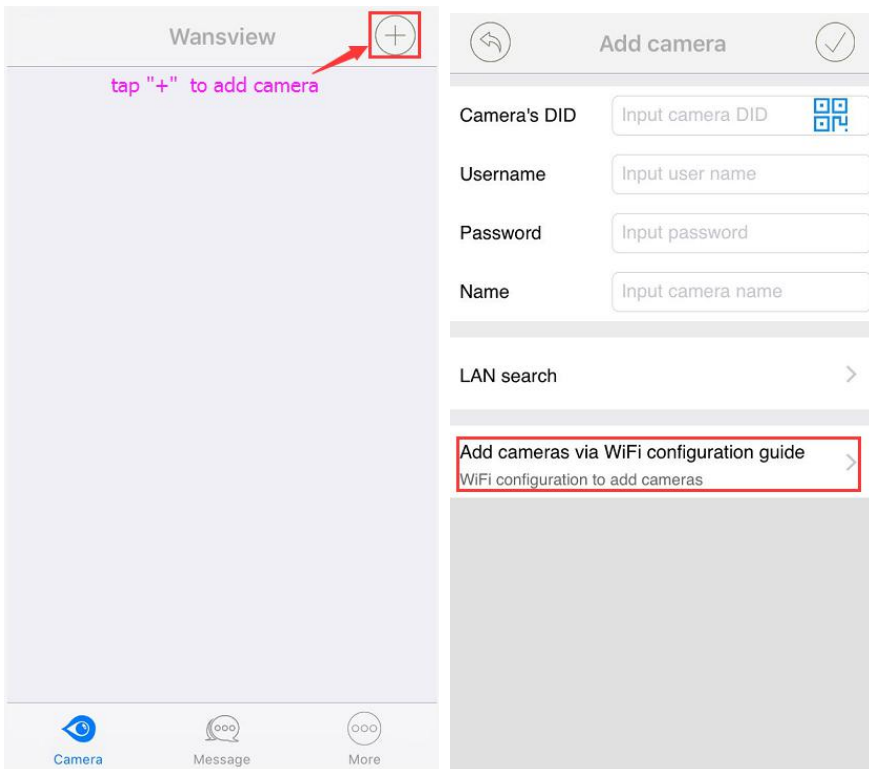
- Download the free app onto your supported device.

Step 2 Power on Camera

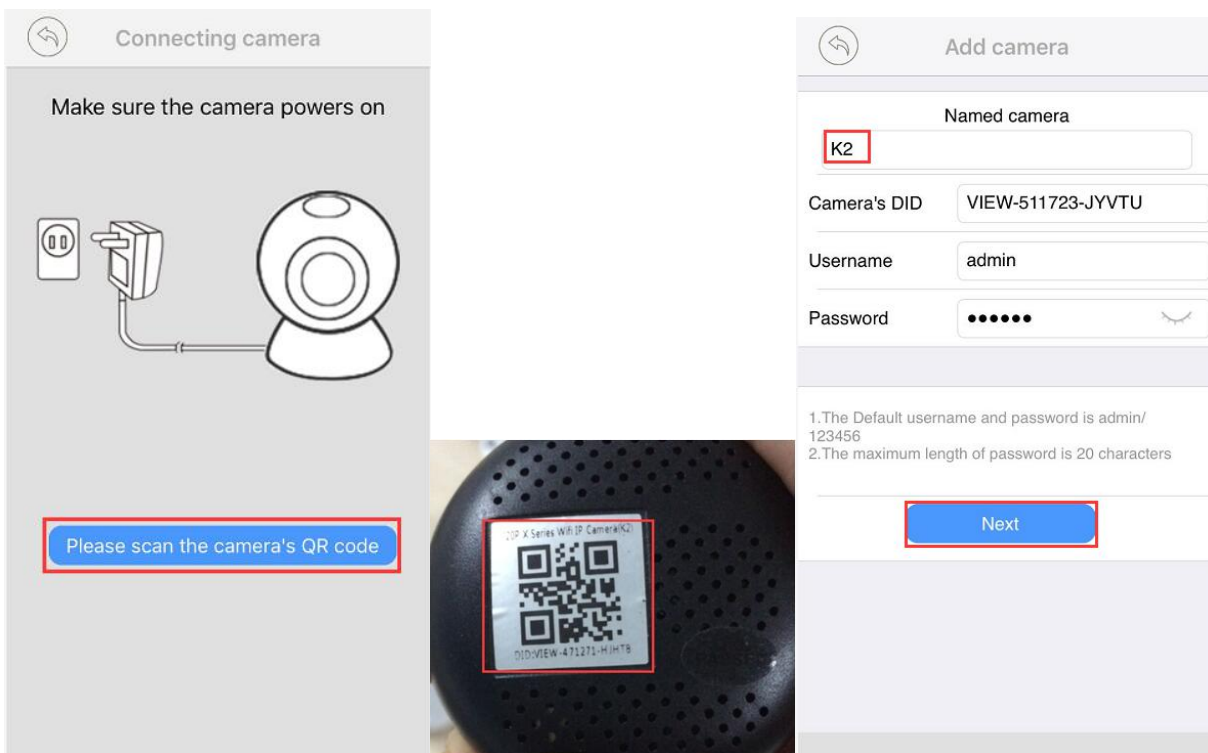
- Power for the camera with the included power supply and place it near your router within 3 feet.

Step 3 Connect to network

- Verify your smart device (iOS or Android) is connected with 2.4G wifi.
- Launch the **Wansview** app, Click  to access **Add Camera** page and select “Add cameras via WiFi Configuration Guide”



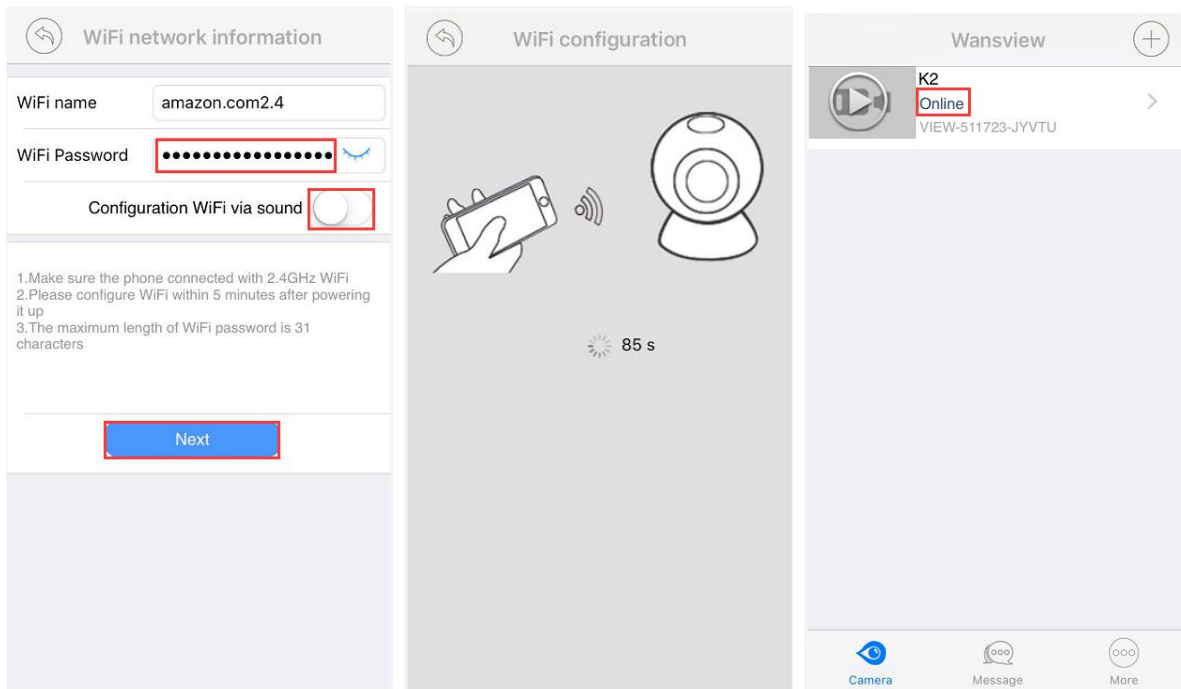
- Scan the QR code on the back of the camera, and **name the camera**. Then **“Next”**



- Input correct WiFi password and **“Next”**, then the camera will trying to connect, if connected, **“Add success”** appears, and it will go back to the Camera page, and shows **“online”**. If it fails to connect, please tap **“try again”** and repeat the process for 2-4 times. The whole process should be finished within 5 minutes of power on. Otherwise, the camera should be unplugged and powered back.

Tips:

If you feel the beeps from the mobile phone is annoying, please uncheck “Configuration WiFi via sound”.
When configure, please make sure the mobile phone is close to the camera.

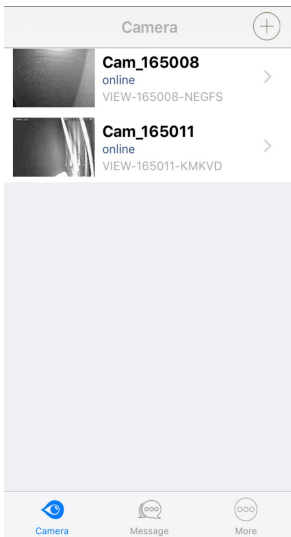


Immediately after setup go to:

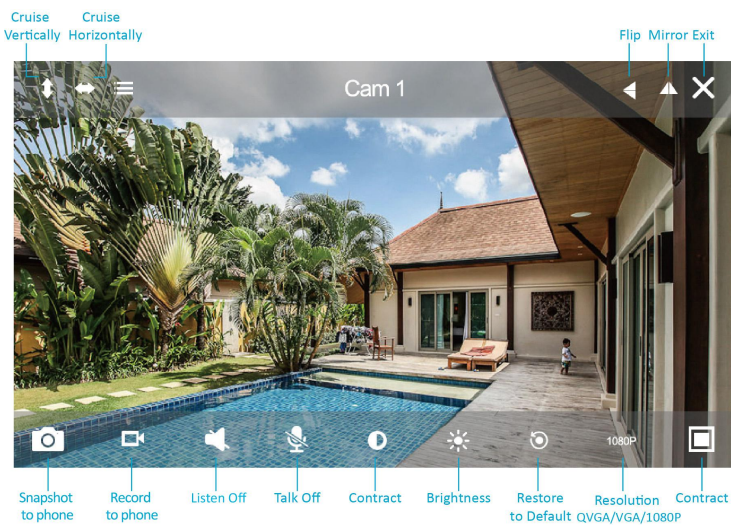
- 1) Advanced Settings > User Management to change User and Password**
- 2) Advanced Settings > About camera and take note of the camera's IP and camera's Port**

2.2 Live Streaming

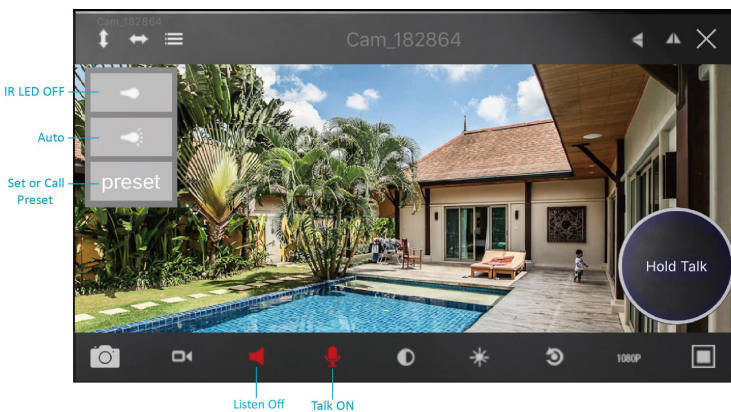
Viewing Camera on a Single Window




a) Tap cameras to view videos streamed by added cameras



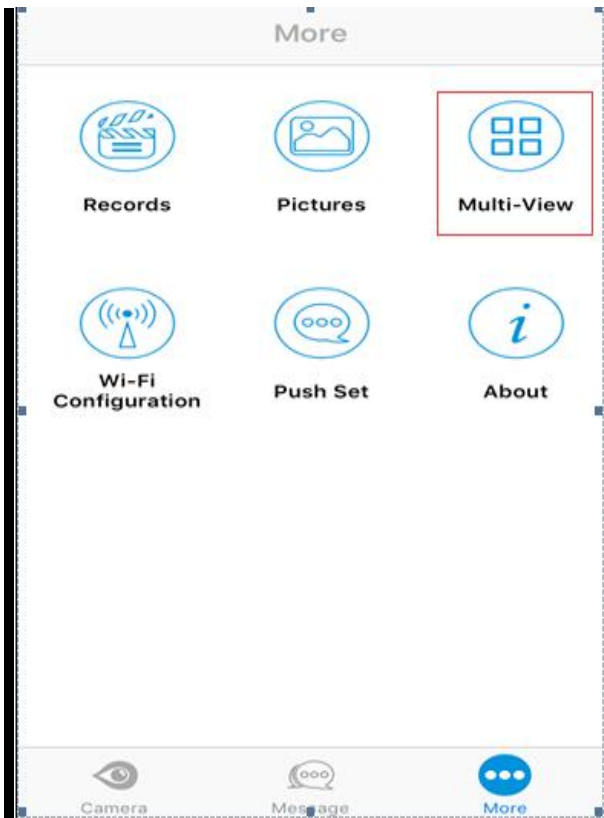
b) Tap the monitoring screen to see the video menu.
 c) Digital Zoom is available on the screen by enlarging fingers (4X digital zoom).



- 1: Two-way audio function: Turn on Listen and Talk. (1-way audio in this model)
- 2: IR Leds switches on at night when the luminosity is under 5 lux. If you want control the IR Led manually, please Tap  to turn ON/OFF the IR LED.

3: The Preset function allows to set up to 8 spots on the video and recall them quickly. First select the spot, then press 1 to 8 and then Call (Not support in this model)

Viewing Camera on Multi-View



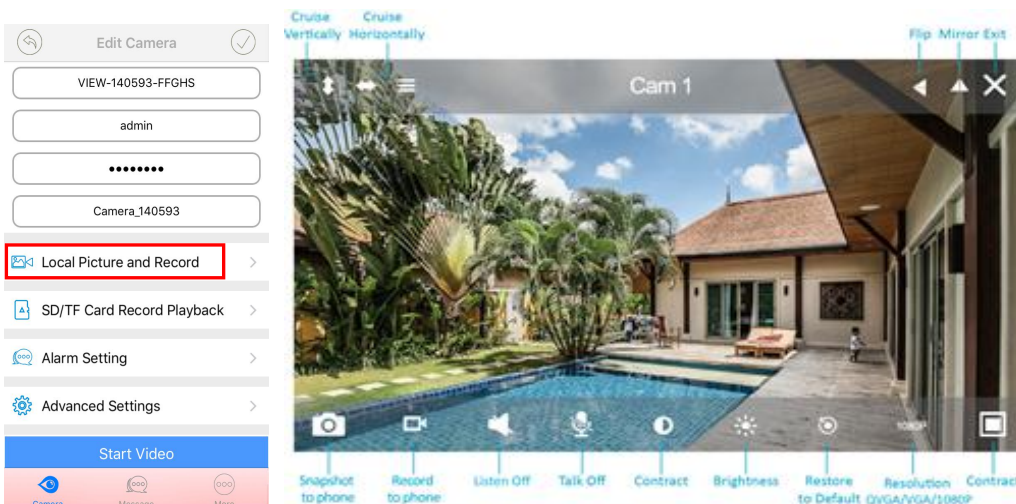
1. Tap "More" and select Multi-View. Up to 4 cameras can be viewed at the same time. Click on cameras on the list to add the view on the main screen.

2. Tap ➡ to hide cameras' list

3. Tap ⌂ to exit multiple windows mode

4. Press ▶ to play camera. Tap again to stop the video.

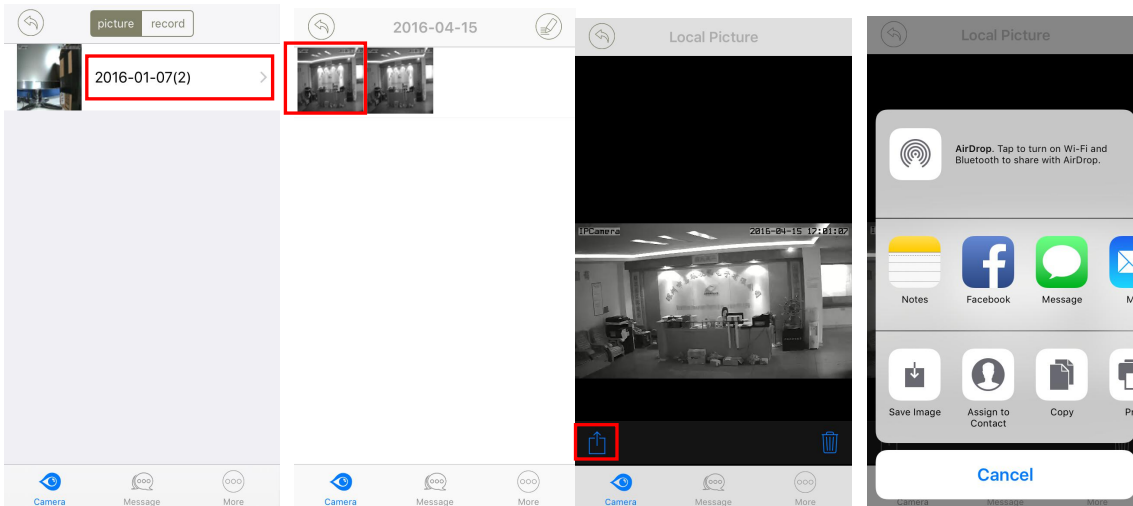
2.3 Local Picture and Record



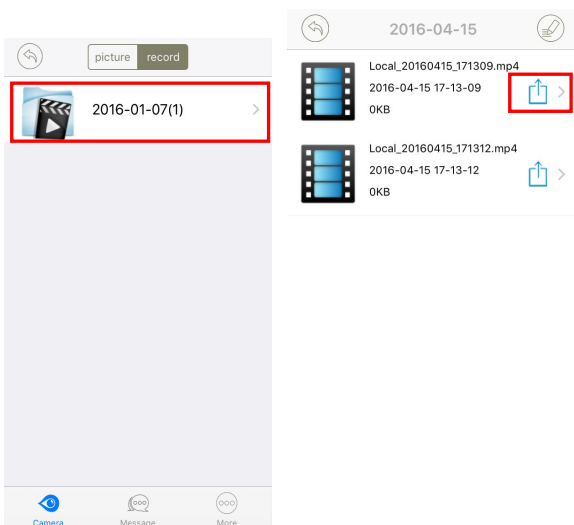
During live streaming, users can take snapshots by tapping on Snapshot to phone and record to phone. To stop recording, tap again or exit from the live streaming. In Local Picture and Record users can find all the pictures and videos taken.



Share pictures and records

To share pictures and records follow the steps indicated in the screenshots.

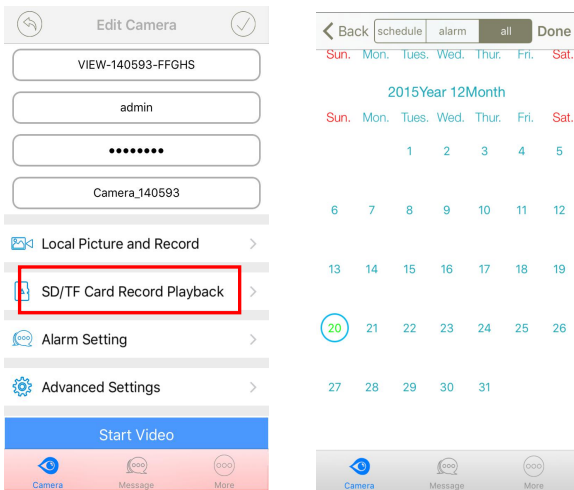


Save records to phone and delete records



Select the videos recorded, click  to save videos in the mobile phone. Click  to delete videos.

2.4 SD/TF Card Record Playback(Not support in this model)



If a SD Card is installed in the camera, from the Advanced Settings users can choose to record or not on the SD card by switching the SD/TF Recording button.

To view recordings, access to SD/TF Record and Playback. Choose a day in the calendar, then select Schedule or Alarm click Done to see the list of recorded video on the SD card.

2.5 Alarm Setting

The IP Camera begins recording when it detects movement/audio and stops recording in 30 sec. In this section, users can customize the motion detection feature. This feature can be set on the app or in the web interface. Motion is detected by changes in the pixels of the images.



Access to "Alarm Setting" to set Alarm Deployment, Alarm Action and Time Deployment.

Alarm Deployment

In the Alarm Deployment screen users can set:

www.wansview.com

Motion Detection Sensitivity: users can choose Low/ Middle/ High sensitivity according to their needs.

Voice Detection Sensitivity: user can choose Low/ Middle/ High according to needs.

Temperature detection(Not for K2): the temperate range can be set from -100°C to 100°C

"<" means the temperature below the set value, the camera will send alarm notification.

">" means the temperature above the set value, the camera will send alarm notification.

Humidity detection(not for K2): the humidity range can be set from 0% to 100%.

"<" means the humidity below the set value, the camera will send alarm notification.

">" means the humidity above the set value, the camera will send alarm notification.

Attention: K2 has no such function in temperature and humidity detection.

Alarm trigger type

Trigger alone: The alarm will be triggered for any kind of active alarm event (Motion/Voice/IO).

Trigger link: The alarm will be triggered for multiple detection at the same time (Motion/Voice/IO).

Alarm Action

Once the alarm is set, users will receive a notification on the smartphone and can choose to:

Save Picture to Email: When an alarm is detected, the camera will send two alarm pictures to the email box. The camera supports Gmail, Hotmail, Yahoo, Gmx ect.

Save Picture to FTP: When an alarm is detected, the camera will send 2 pictures to your FTP server, 3-4 pictures will be sent if the motion is enough frequent. Click on FTP Setting to setup FTP.

Save Record to FTP: When an alarm is detected, the camera will send a 15 seconds video to your FTP server; for constant recording, the alarm will be upload to FTP every 30 seconds.

Save Picture to SD/TF(disabled): When an alarm is detected, the camera will send 2 pictures to the SD card.

Save Record to SD/TF(disabled): When an alarm is detected, the camera will send a 30 seconds video to the SD card.

Trigger IO Output(disabled): User can add a siren or another alarm device to the camera. When an alarm is detected, the external IO output will work. Users can choose alarm duration from 5 to 30 sec.

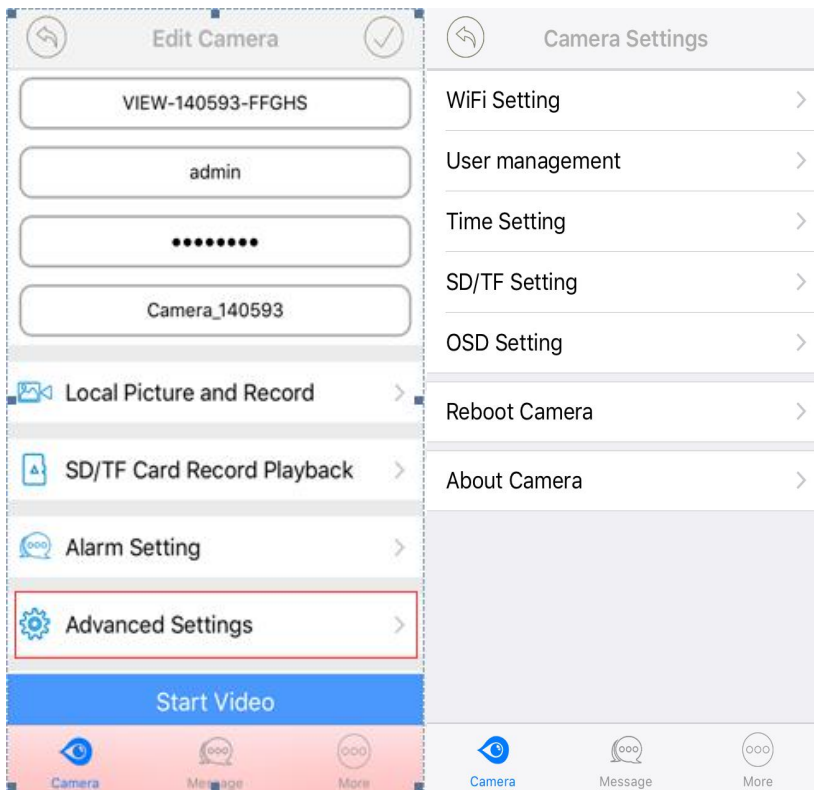
Preset Linkage: When an alarm is detected, the camera will focus on one of the 8 Preset spots (see above).

Speaker Linkage: When an alarm is detected the speaker will act as a siren for the chosen length (5-30sec).

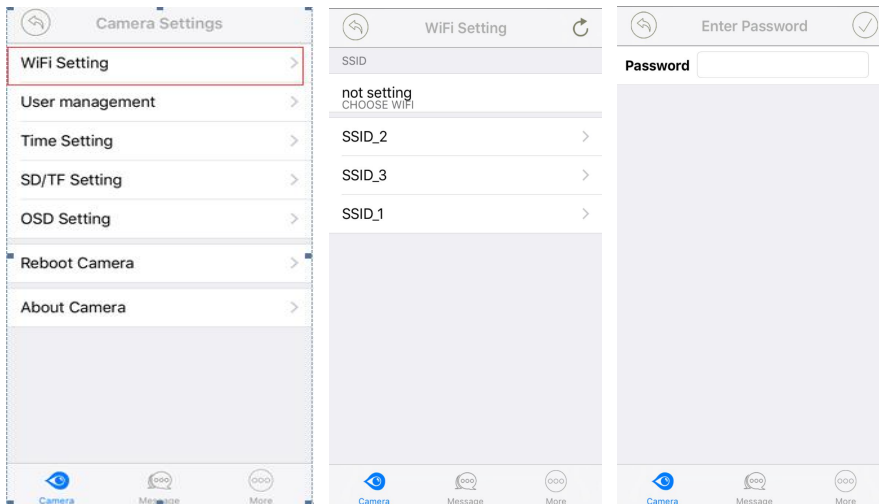
Time Deployment

Users can set time and day of the week where the alarm function is active.

2.6 Advanced Settings



2.6.1 Wi-Fi Setting

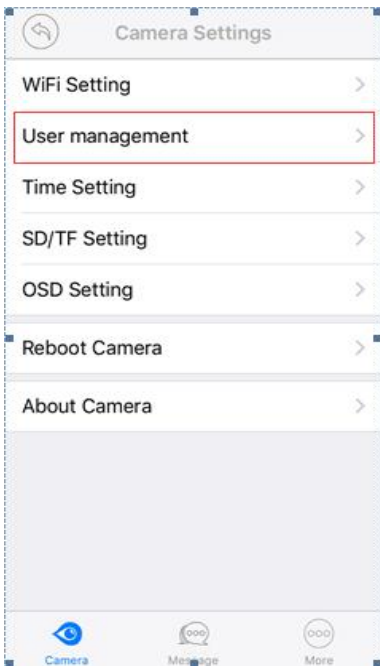


Tap Wi-Fi Setting to manually input the Wi-Fi password.

Note:

1. This camera supports only 2.4GHz frequency.
2. Password shall be no longer than 31 characters. The following special characters not support in SSID and password: ' and &.

2.6.2 User Management (Change User and Password)

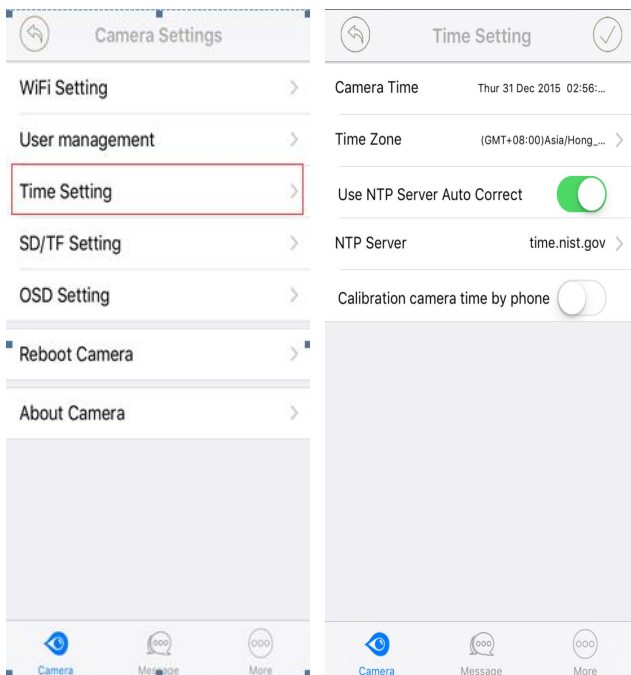


In User Management, users can set 3 level of access to the camera:

- Administrator: Full access rights
- Operator: Can operate the camera, but not access to advanced settings
- Viewer: Only can view camera. No Pictures or Recordings.

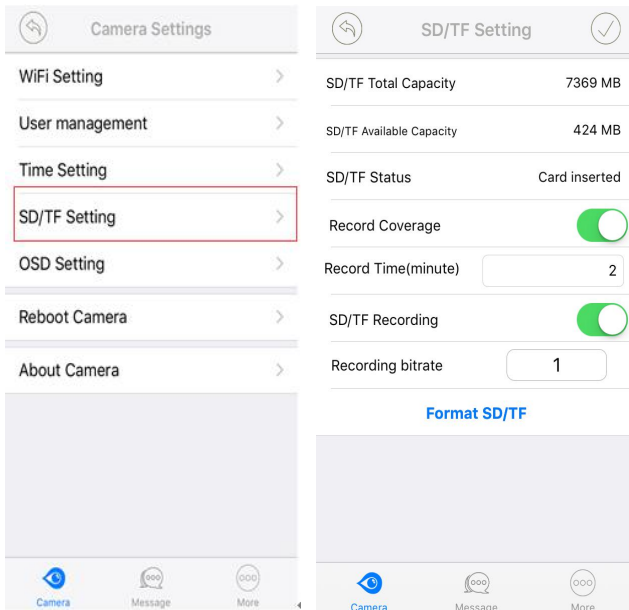
Note: password shall be no longer than 20 characters

2.6.3 Time Setting



Click "Time Setting" to set time and time zone.

2.6.4 SD/TF Card Setting(Not support in this model)



Click "SD/TF Card Setting" to check the SD card capacity and status. A 64Gb SD card can store videos continuously up to 3 days.

Enable the "record coverage" to overwrite the old files automatically. Otherwise, when the SD card is full, recording function will stop.

Users can record videos from 2 to 15 minutes in the continuous mode.

Enable the SD card recording, to record constantly. For example, if record time set at 2 minutes, the camera will record every 2 minutes

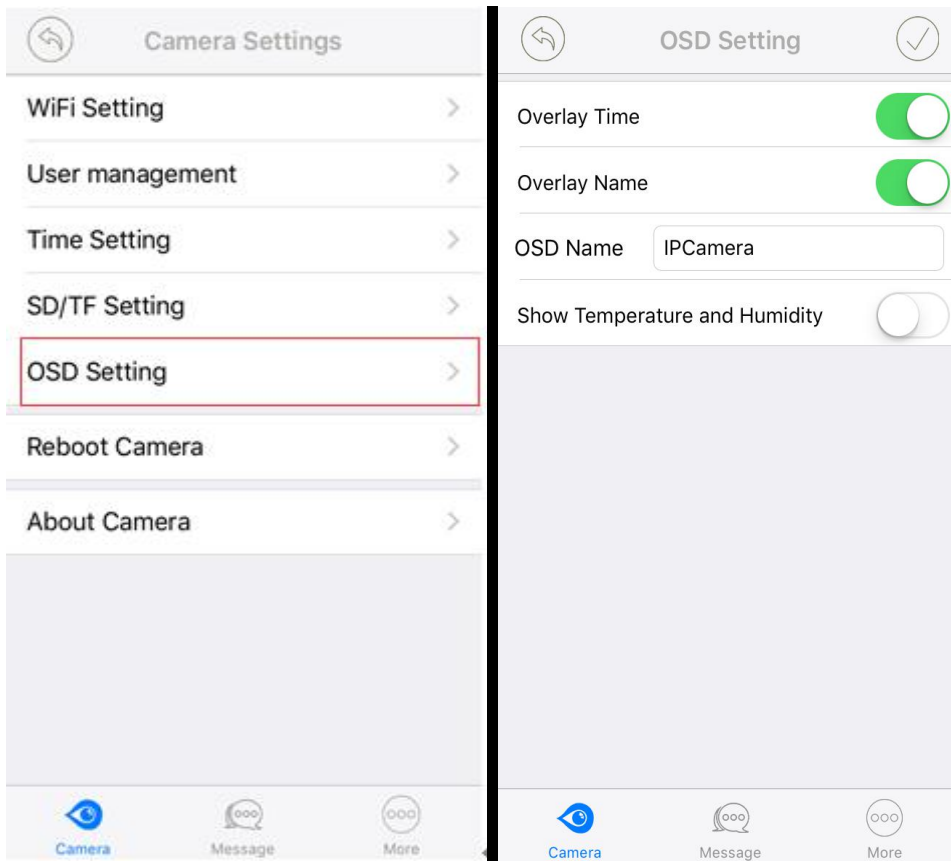
Users can set the Recording bitrate (Resolution):

1: 1280x720 pixels

2: 640x360 pixels

3: 320x180 pixels

2.6.5 OSD (On Screen Display) Setting



Click "OSD Setting" to set:

- Overlay time: camera time in live streaming, recording and pictures
- Overlay name: camera name in live streaming, recording and pictures

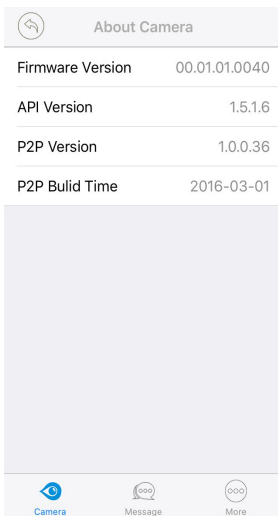
2.6.6 Reboot camera



Reboot camera if the camera is not working. Please note the setted specification will

change once rebooted.

2.6.7 About Camera



On this page, user can check the camera firmware version and other data cameras. To update the camera firmware, user should login in the Web Interface.

Remember to exit the app after use, to prevent battery drained data consumption

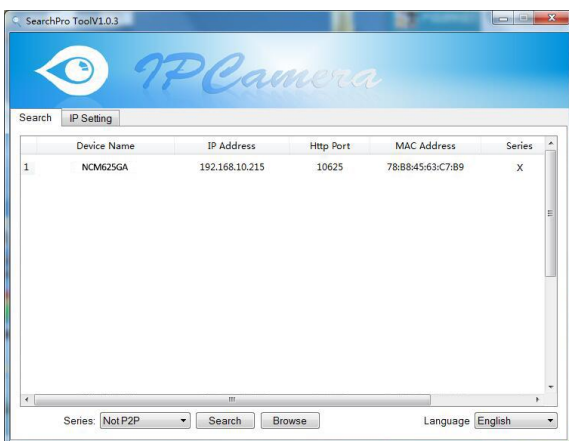
3. Web Access

please go to our official website www.wansview.com/service to download SearchPro tool. Please note: SearchPro can only be used in a LAN.

If you lost the label which is on the bottom of the camera and forget the DID number, you can select Smart P2P with SearchPro to get the DID number (starts with VIEW). Also you can change the camera's IP address and Port number via the Search Tool.

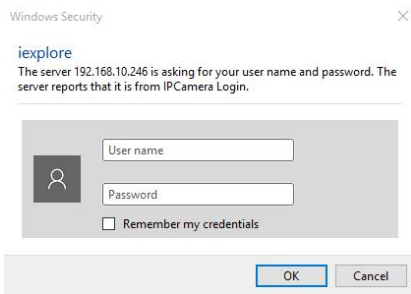
3.1 Start up

3.1.1 Network Installation



- 1: Please install and start the SearchPro tool
- 2: The camera tool will automatically find all Wansview IP Cameras in your network and will show their IP address.
- 3: If your camera doesn't find your IP address right away, please wait 10-15 seconds for your routers DHCP service to assign an IP address to your camera.
- 4: Double-click the camera's IP address to open the web user interface with your default browser and you will be greeted by the camera's login window.

The Login mask will appear:



3.1.2 Plugin installation



The Camera has 2 view mode:
View Mode 1 supported by an OCX Plugin (HYPlayer.exe)
View Mode 2 supported by an Adobe Flash Player Plugin

View Video-Mode 1 - Complete Camera Management



Click on Download Plugin to download and install the OCX Plugin-HYPlayer plugin.

Note: If you use Google Chrome or Firefox you need to install the IE tab:

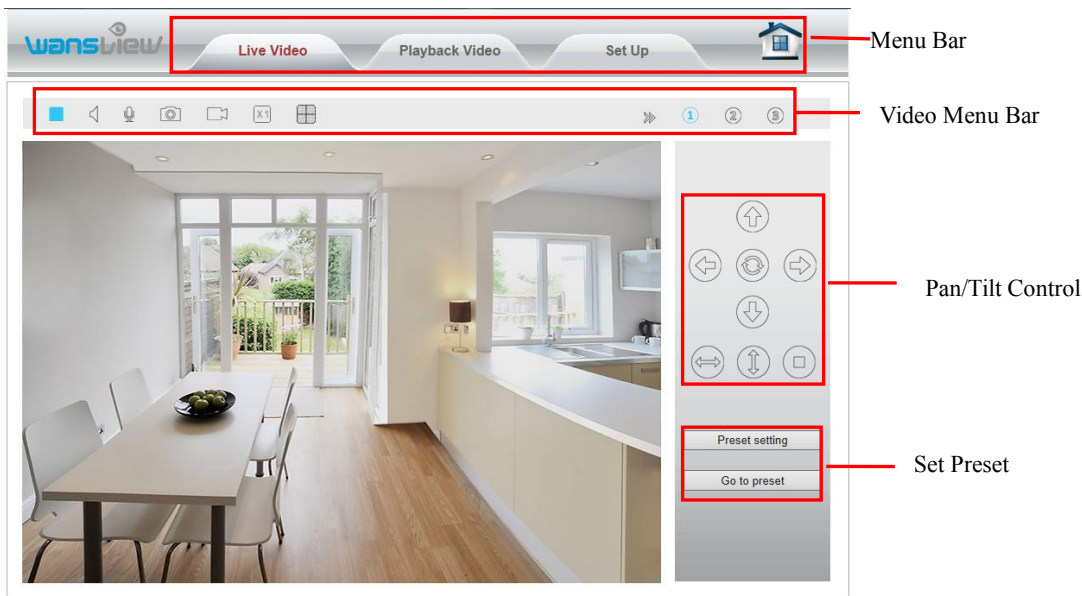
- Firefox > Add-ons > Extensions. Search for IE Tab and install.
- Chrome > More Tools > Extensions. Search for IE Tab and install. (Details in FAQ)

View Video- Mode 2 – Limited Camera Management

This view is supported by the Adobe Flash Player plugin and if it is not installed, the browser will prompt to download and install the plugin.

In the Flash Player mode, users have less functions. Microsoft Edge is not supported.

3.2 Live Streaming and Recording on PC



Play/ Stop: Play and stop video.

Listen: If your PC is equipped with speakers, click here to listen from your camera.

Talk: Activate the Talk function. A microphone is needed in your PC. Adjust volume under Set up > Video & Audio > Audio.

Snapshot: Capture live images and save to PC. Set folder for the snapshots in Setup > Local Configuration. Snapshots format is JPG.

Record: Record and save to PC.

Digital Zoom: click here to adjust the camera 4X digital zoom.

Show/Hide Control Panel.

Resolution: Choose 3 resolutions 1280x720 / 640x360 / 320x180



Use the control panel to pan and tilt your camera's head. Click or to move camera's head horizontally or vertically. Stop camera movement and it will go to the initial position. (Not support for this model)

Preset setting			
1	2	3	4
5	6	7	8

Set up to 8 camera preset spots, as explained above in the App Section.(Not support of this model)

Go to preset			
			X
1	2	3	4
5	6	7	8

3.3 Playback Video(disabled in this model)

Click "Playback Video" to enter the SD card video file playback page. Click the video date to inquire. Click "Search" to list the video files of the selected day. Click listed files to play back. Download files on PC with the download button.

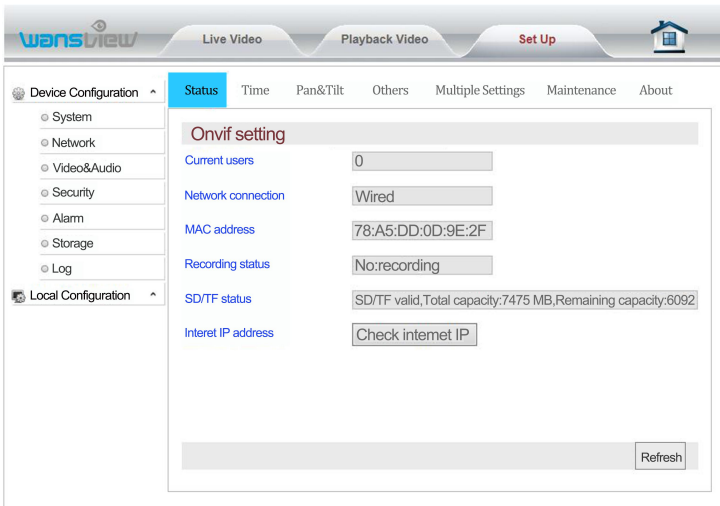
The screenshot shows the IP Camera web interface. At the top, there are navigation tabs for "Live Video", "Playback Video" (which is active), and "Set Up". A home icon is also present. The main content area is divided into three sections:

- Video Feed:** A large window showing a live video of a swimming pool area. A calendar overlay is visible, showing the month of December 2015. The date 17 is highlighted in red. The time displayed in the top right of the video feed is 2015-12-17 13:49:45.
- File List:** A list of video files on the right side, each with a download icon. The files are named with their unique IDs, such as 20151217134940.mp4.
- Controls:** Below the video feed, there are controls for "Time" (set to 2015-12-17), "Recording type" (set to Scheduled recording), and a "Search" button. Below these are "Total 17" and "Video Total 1" indicators, along with page navigation buttons.

3.4 Set Up

3.4.1 System

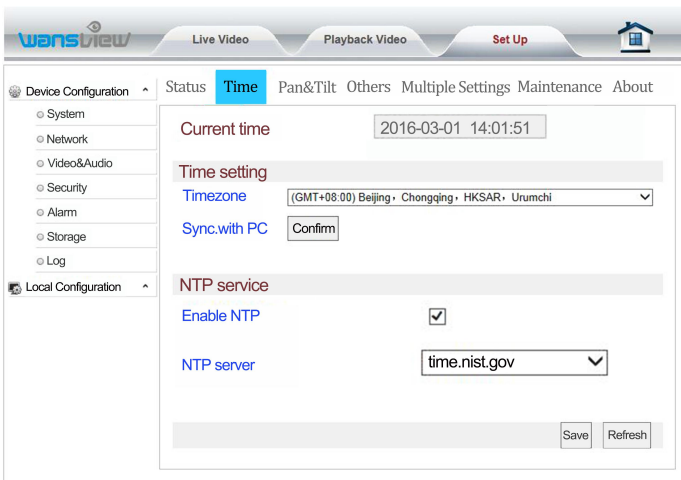
System > Status



Data about the current Camera Status.

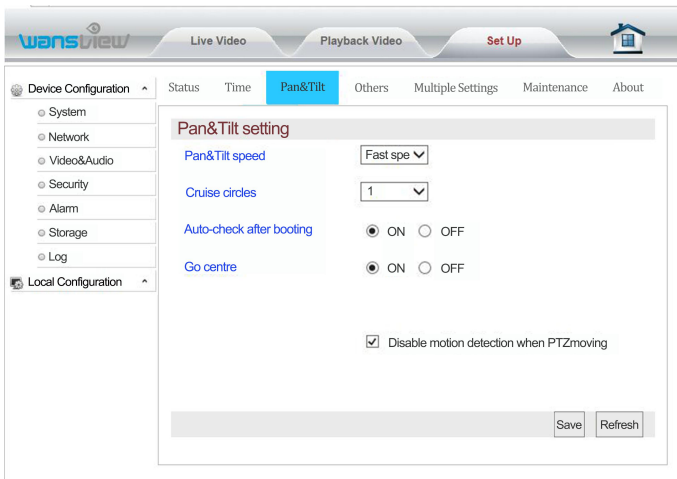
Check the Internet IP address by double tapping Internet IP address

System > Time Setting



Users can choose to sync time to the PC or to a NTP server.

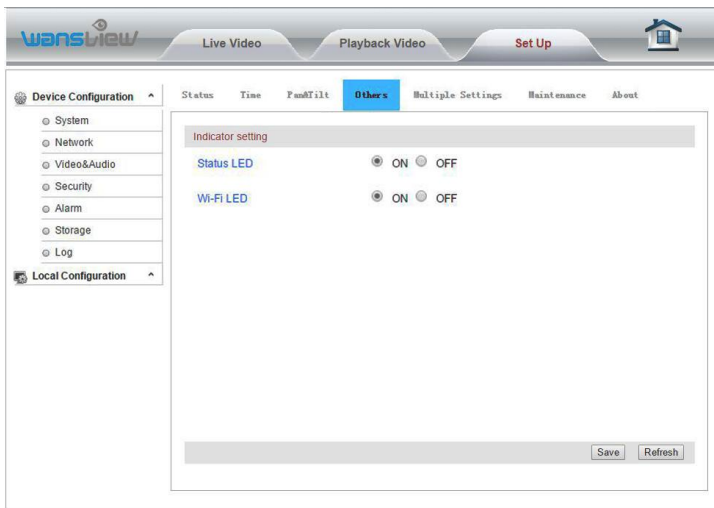
System > Pan & Tilt



Users can set the pan/tilt speed (fast/medium/slow) and cruise circles.

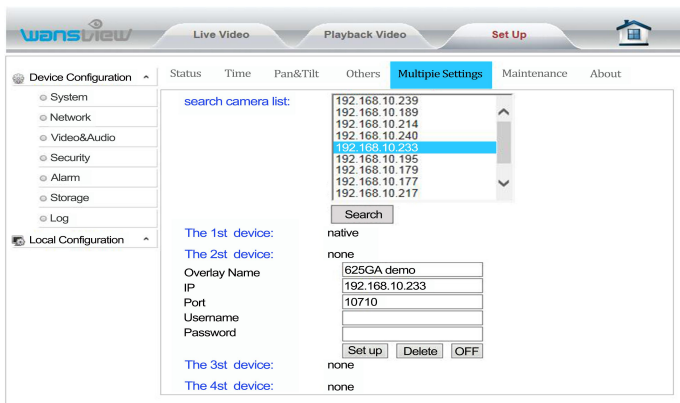
Users can disable motion detection when the camera pan or tilt.

System > Other Settings



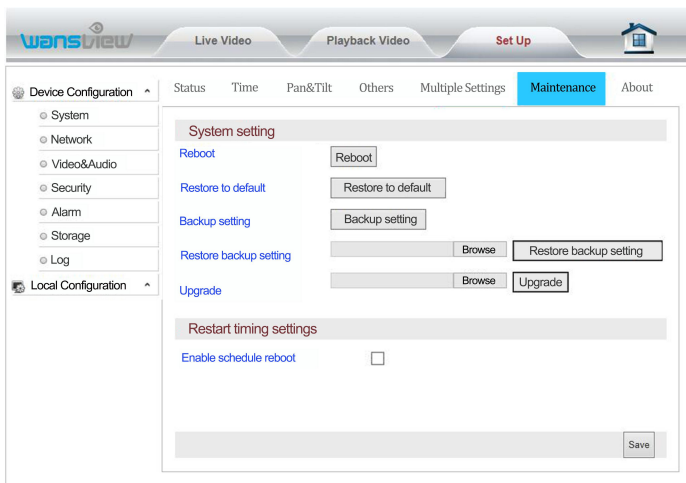
Turn off Led indicators at your choice.

System > Multiple Settings



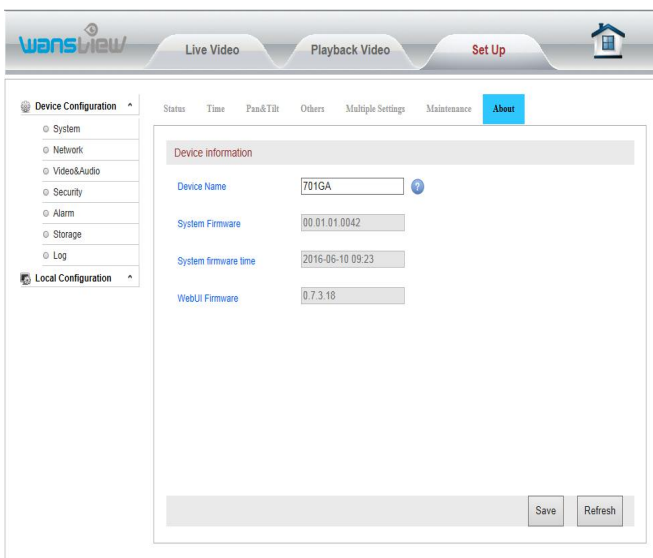
Add up Cameras for multiple 4 view. Get their IP and Port, Input User and Password. Name them.

System > Maintenance



In System Maintenance users can reboot/restore to default / backup/upgrade camera.

System > About

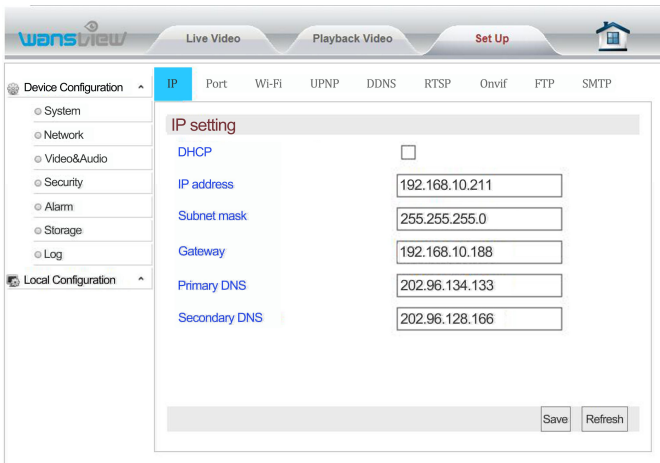


In System About users can check the latest camera's firmware which can be downloaded at www.wansview.com.

3.4.2 Network

These functions are meant to be managed by technical specialist except for FTP Server Settings and SMTP Settings. Contact our friendly customer service for specific technical needs.

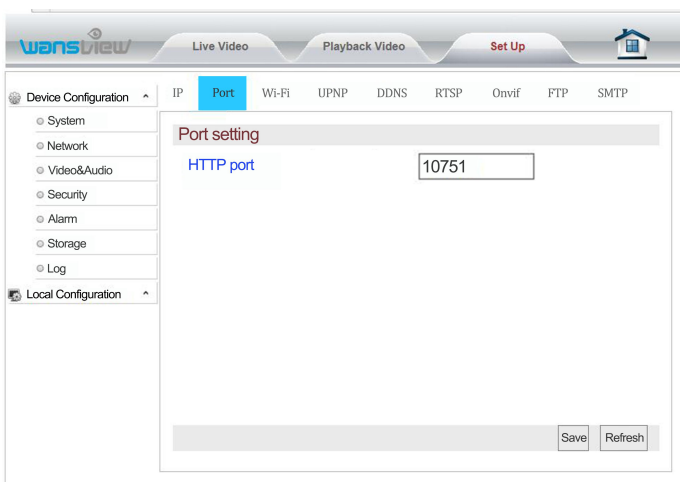
Network > IP setting



You can set the camera IP address by your router(DHCP) or you can manually set a fixed address.

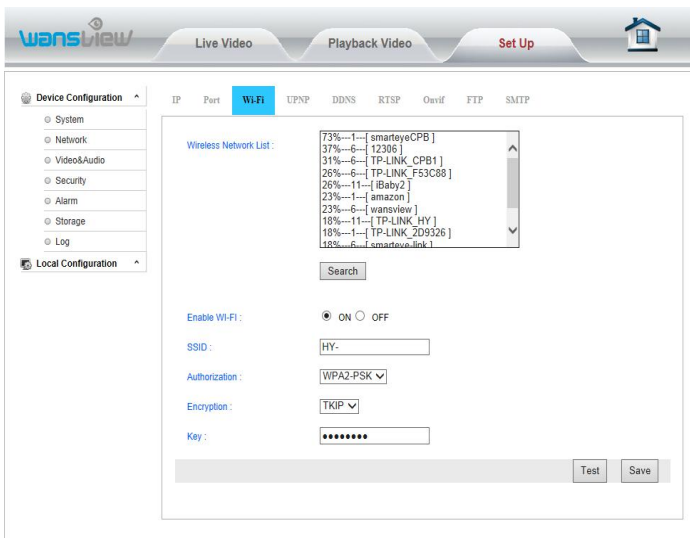
- IP address (for example 192.168.x.x)
- Subnet mask(for example 255.255.255.0)
- Gateway(IP address of your router; for example 192.168.x.1)
- Primary DNS(IP address of your router; for example192.168.x.1)
- Secondary DNS(IP address of your router; for example192.168.x.1)

Network > Port setting



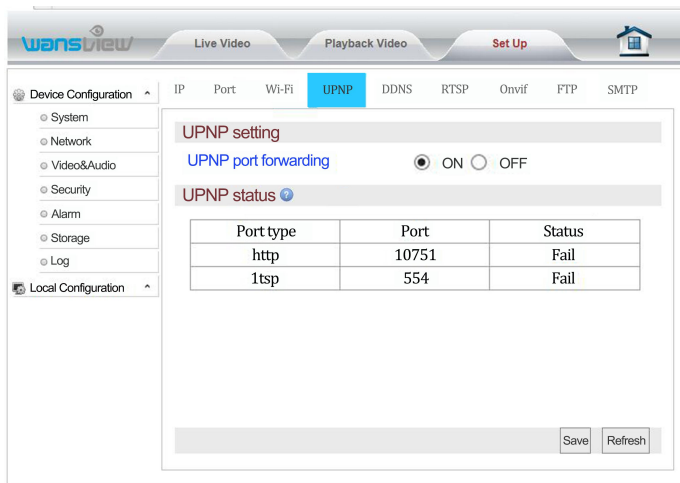
At "Port Setting", users can change web access port (http port). Port setting range: 80-65535. Pay attention not to conflict with other port values.

Network > Wi-Fi setting



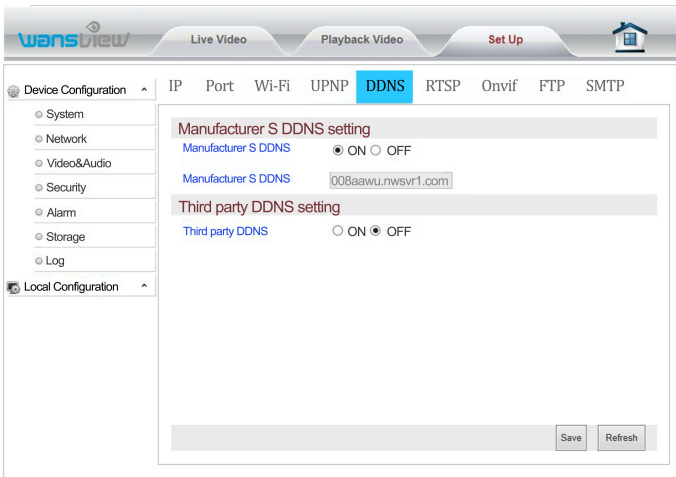
At "Wi-Fi Set Up", click "Search" and start up "Wi-Fi". Choose the wireless router to be connected. Input the password to connect to the router. Click Save to complete Wi-Fi Configuration. After completing the configuration, click Test to confirm whether it is connected to the wireless router.

Network > UPNP setting(disabled in this model)



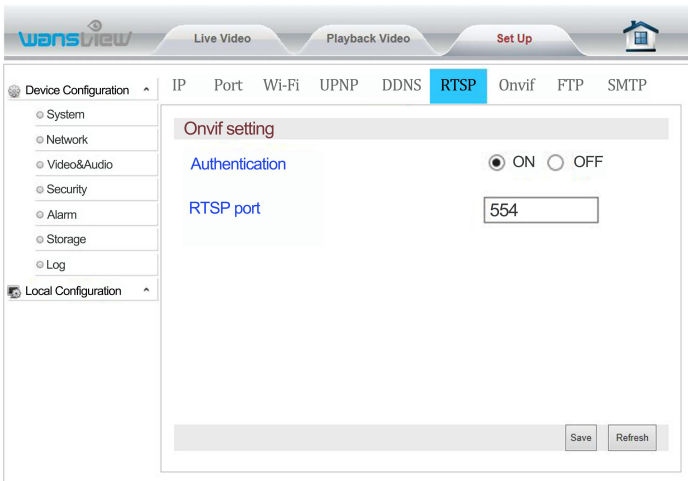
If the user wants to view the camera through the internet, the router and camera UPNP port forwarding function need to be turned on. Before auto port mapping, please ensure your router supports UPNP and has been enabled.

Network > DDNS setting



Users can access the camera via DDNS domain name provided by the manufacturer for free or a third party domain name. Port mapping is required while using domain name to access. The third party domain name supports 3322.org/dyndns.org/ No-ip.com.

Network > RTSP setting



The user can set the RTSP port after entering RTSP Setting bar. In addition, the RTSP Authentication function can be closed. Default value of RTSP port is: 554 Selection range: 554-65535

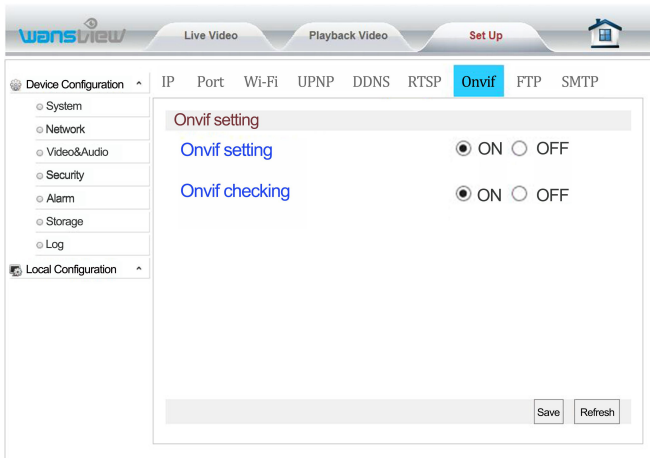
Some general RTSP streaming media software can be adopted to access video on the device, such as VLC. Access links are as shown below:

The first bit stream: `rtsp://user: password @IP:rtsp port /live/ch0`

The second bit stream: `rtsp://user: password @IP:rtsp port /live/ ch1`

The third bit stream: `rtsp://user: password @IP:rtsp port /live/ ch2`

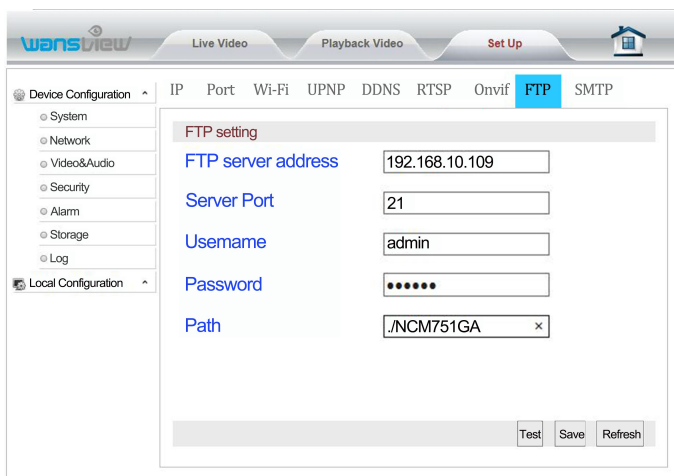
Network > Onvif setting(disabled in this model)



Onvif is a global standard for the interface of IP-based security products. The ONVIF protocol ensures interoperability between products regardless of manufacturer, allowing you to integrate your IP camera as a generic ONVIF camera into existing security systems. Enter Onvif Setting. The user can start up and calibrate Onvif functions. The default setting for Onvif calibration is on.

Note: NVR devices of some manufacturers do not support camera access with Onvif calibration. Our device supports Onvif versions 2.5 and below.

Network > FTP Settings



FTP Server Address: This field allows the user to designate an IP address or DDNS address for the FTP server.

Server Port: This field allows the user to designate the port number for the FTP server.

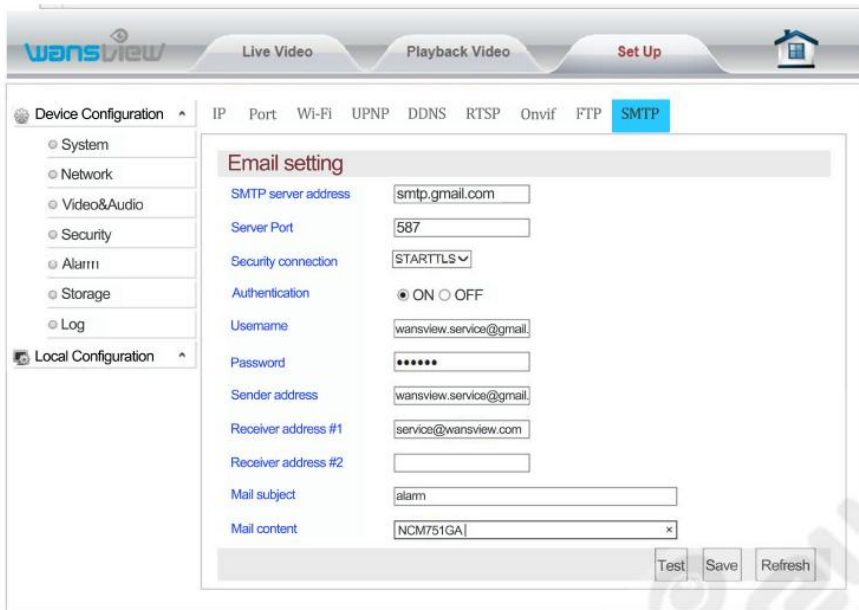
User Name: Input FTP user name.

Password: Input FTP password.

Path: Specify a folder for storing video and pictures, for example: /NCM751GA

Note: If you want to save the alarm picture and video to FTP, you must build an FTP sever, then create an FTP account with a password (not an anonymous account) on your FTP server and FTP account must have create and delete file rights.

Network > SMTP (E-mail) Setting



To get started, make sure that your e-mail provider supports SMTP. Then input required parameters.

Mainstream E-mail suffixes supported by SMTP include: smtp.gmail.com, mail.yahoo.com, smtp.gmx.com, smtp-mail.outlook.com. Take Gmail setting as an example.

Server address: SMTP stands for Simple Mail Transfer Protocol. This field allows the user to enter the SMTP server used by the email service.

Server Port: This field allows the user to enter the port that corresponds to the selected SMTP server. The SMTP port is usually set at 25 if there is no security. Some SMTP servers have their own ports, such as 587 or 465. Specific port number is determined by mail service provider.

Security connection: This dropdown box allows the user to select an encryption type.

Authentication: It should be on.

User name: Input email address.

Password: Input APP password. APP password allows 2 steps verification in your Gmail account. Click Profile>Account>Sign-in &Security to create App password.

Sender Address: This field allows the user to enter the email address to which alarms are sent. This email address should be consistent with the above Email address for the User name.

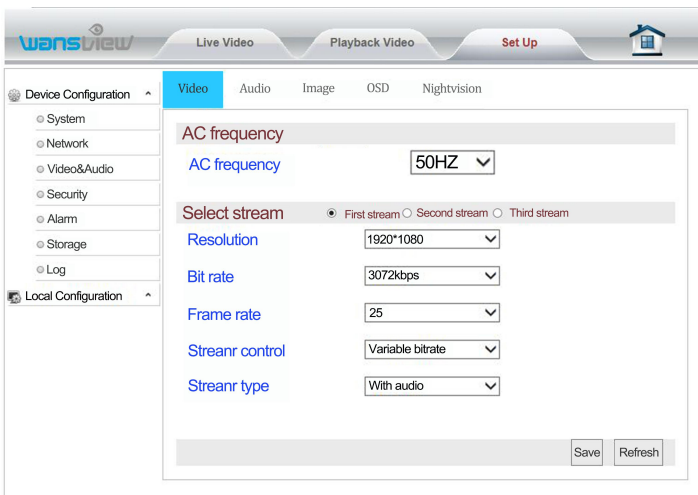
Receiver Address #1: These fields allow the user to enter the receiver email address which will receive any emails pertaining to alert and alarm emails.

Mail subject: This field allows the user to define the subject line of the email.

Mail content: This field allows the user to define the mail content.

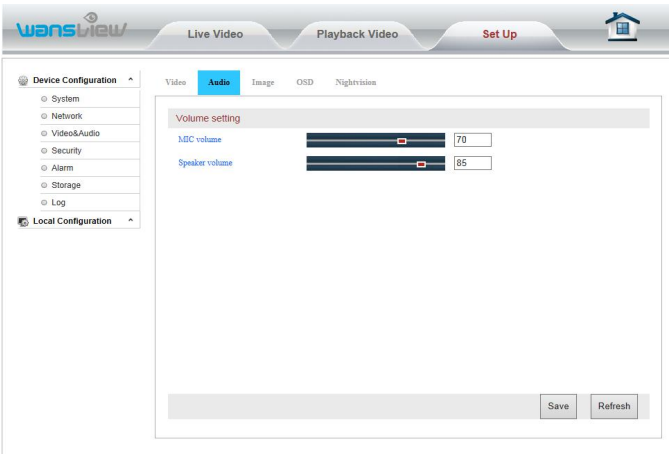
3.4.3 Video and Audio

Video and Audio > Video



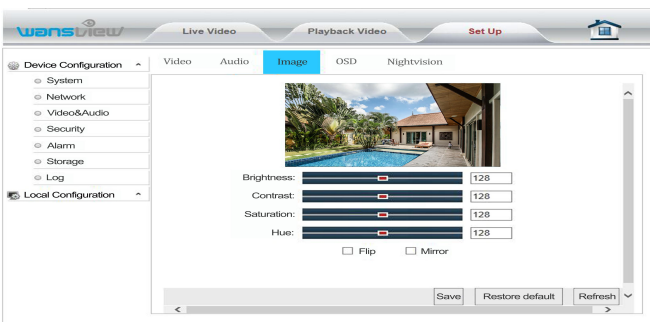
Users can set the exact AC Frequency.
Frame rate (1~30fps)

Video and Audio > Audio Setting



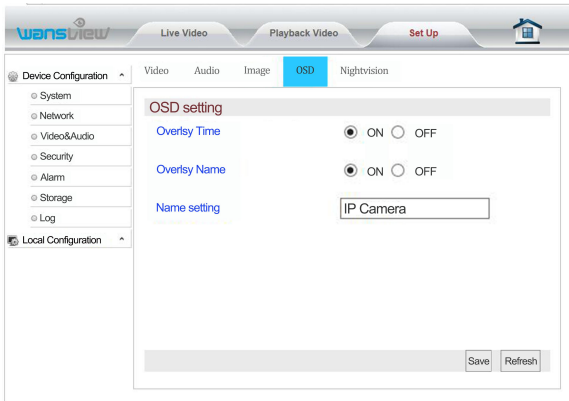
Here you can adjust Microphone and Speaker volume

Video and Audio > Image Setting



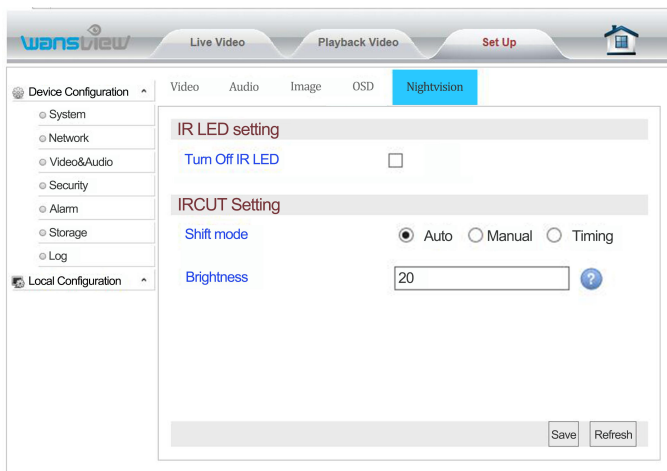
Here you can adjust the image parameters brightness, contrast, saturation and hue. You can also flip and mirror the video image when tick the options.

Video and Audio > On Screen Display Time and Camera Name



Enter "OSD Setting" to overlay the time and name on the video image.

Video and Audio > Night Vision

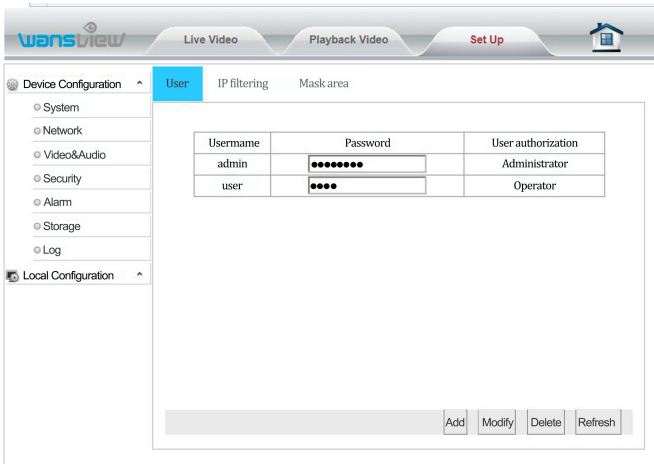


Enter "Night Vision Setting" to set IR LED and IRCUT. Once IR LED is off, the IR LED IR cut will not work any longer.

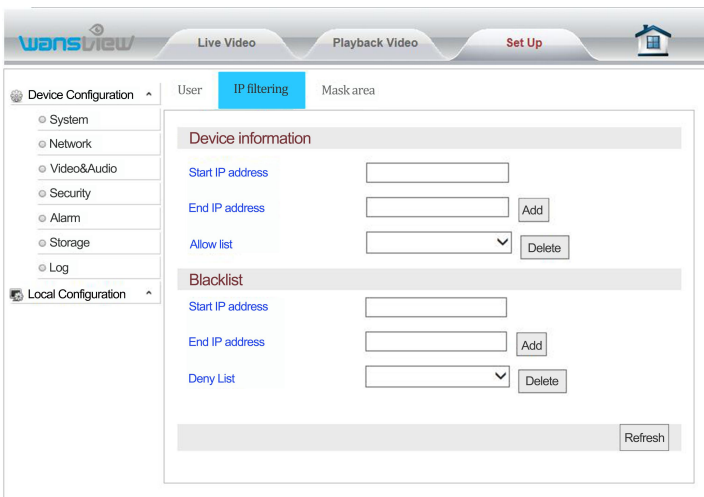
3.4.4 Security

To modify /add /delete administrator operator and viewer can be set in this page. (add up to 8 viewers and set rights in total).

Reminder: After the operation, click Save. Then click Refresh so that the edited content will be displayed on the web page.

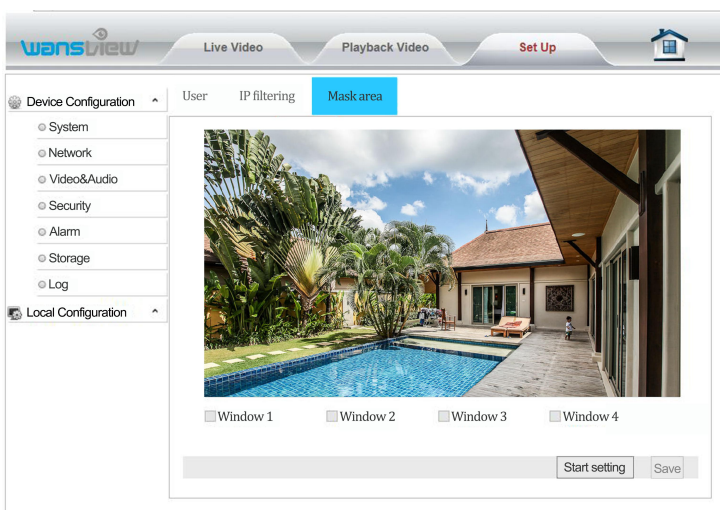


Security > IP Filtering



This screen allows for the filtering of IP addresses, either blocking them or granting them access to the camera. This feature helps make the camera more secure by limiting remote access only to approved users. Below is a Screen shot of the IP Filtering screen.

Security > Mask Area (not available for MAC users)

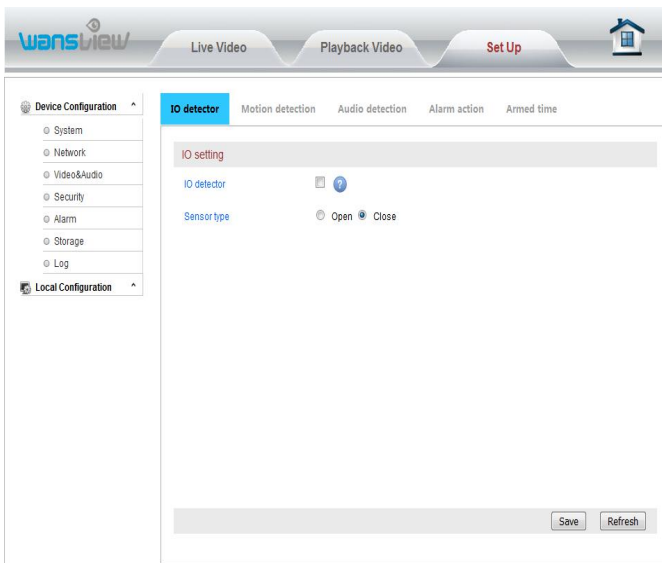


Users exclude up to 4 areas from monitoring.

Click Start Setting and check the windows.

3.4.5 Alarm - Motion and Audio Detection

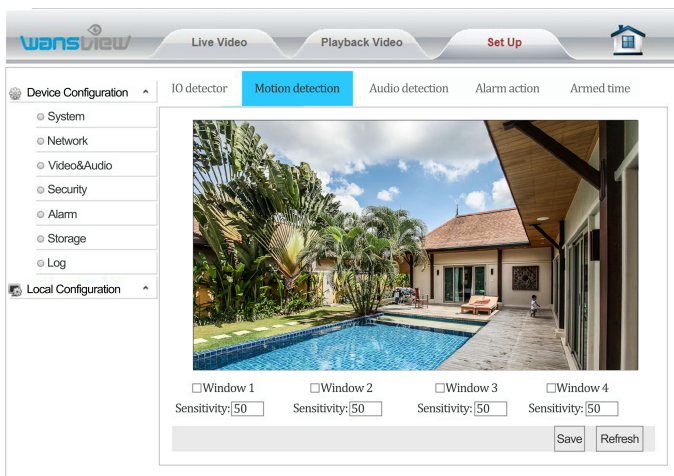
Alarm > IO Detector(disabled in this model)



Camera allows user to add an external source of alert (motion sensor or push button). We recommend the Instar IN-500 PIR Sensor as external motion sensor.

The external sensor can be always open or always close. Please check your alarm device setting in the user guide.

Alarm > Motion Detection (Intruder Monitor)

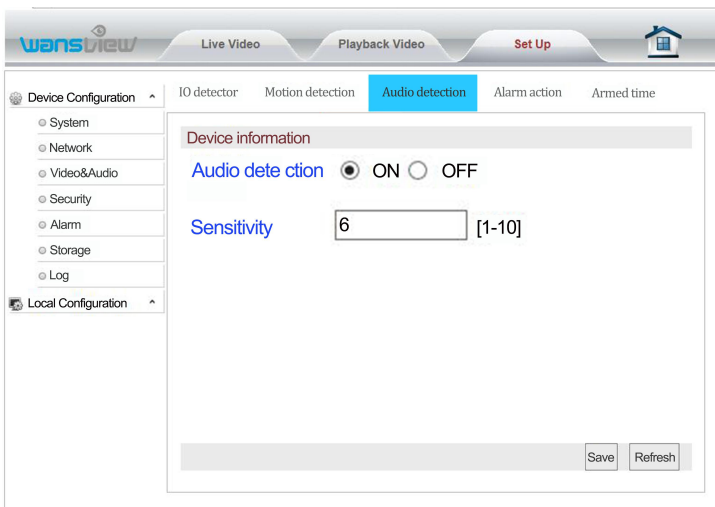


The Motion Detection in the Web Interface is more advanced than in the App. User can set up to 4 detection areas and different sensitivity. 15 corresponds to the lower level and 55 to the mid-level.

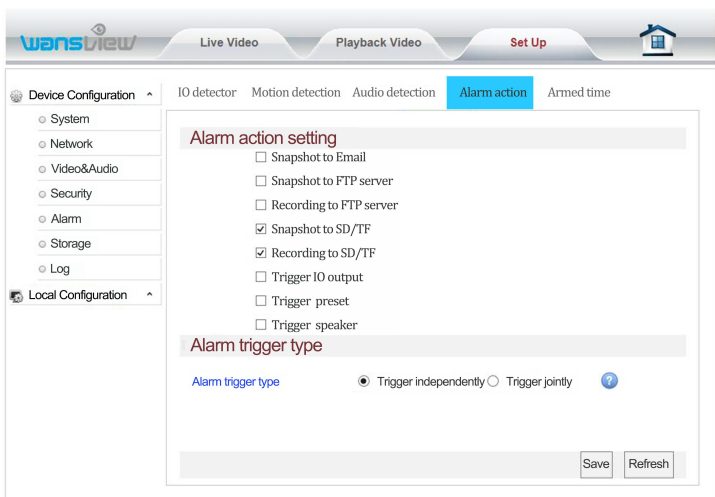
The IP Camera begins recording when it detects movement/audio and stops recording in 30 sec. In this section, users can customize the motion detection feature. This feature can be set on the app or in the web interface. Motion is detected by changes in the pixels of the images.

Please note that motion detection doesn't work through windows. In this case we recommend to connect an external motion sensor out of the window using the IO alarm port.

Alarm > Audio Detection (Baby Monitor)



Alarm > Alarm Action



Once the alarm is set, users will receive a notification on the smartphone (only Android) if the app is running on the background and can choose to get:

Snapshot to Email: When an alarm is detected, the camera will send three pictures to the email box. Users can set up to 2 recipients.

Click Mail Setting to setup the email. Check your email provider for SMTP Server and Port.

Snapshot to FTP server: When an alarm is detected, the camera will send 2 pictures to your FTP server. Click on FTP Setting to setup FTP.

Recording to FTP server: When an alarm is detected, the camera will send a 15 sec video to your FTP server.

Snapshot to SD/TF(disabled in this model): When an alarm is detected, the camera will send 2 pictures to the SD card.

Recording to SD/TF(disabled in this model): When an alarm is detected, the camera will

send a 30 sec video to the SD card.

Trigger IO Output(disabled in this model): User can add a siren or another alarm device to the camera (wired). When an alarm is detected, the external IO output will work. Users can choose alarm duration from 5 to 30 sec.

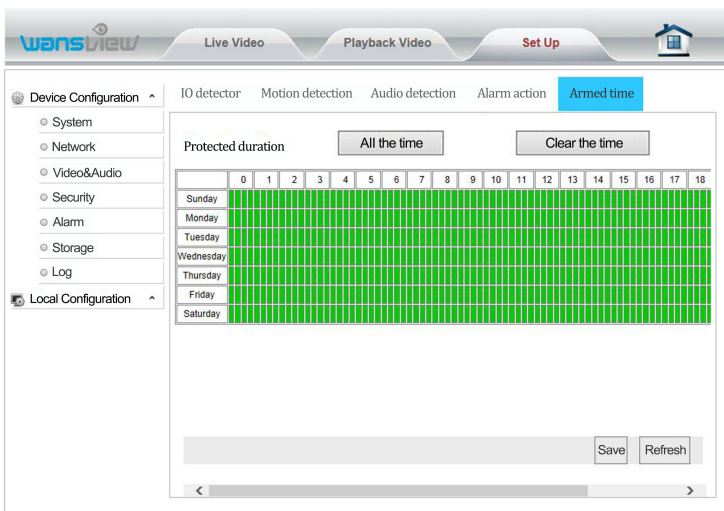
Trigger Preset: When an alarm is detected, the camera will focus on one of the 8 Preset spots (see above).

Trigger Speaker: When an alarm is detected the speaker will act as a siren for the chosen length (5-30sec).

Trigger indipendently: The alarm will be triggered for any kind of active alarm event (Motion/ Voice/IO).

Trigger jointly: The alarm will be triggered for multiple detection at the same time (Motion/ Voice/IO).

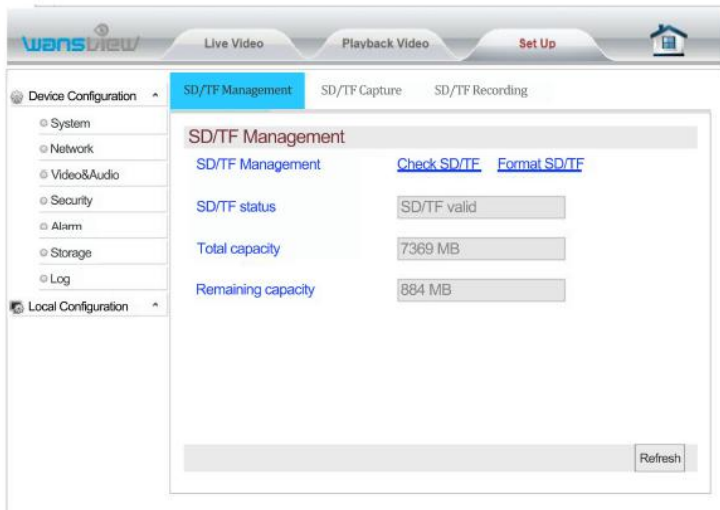
Alarm > Armed Time



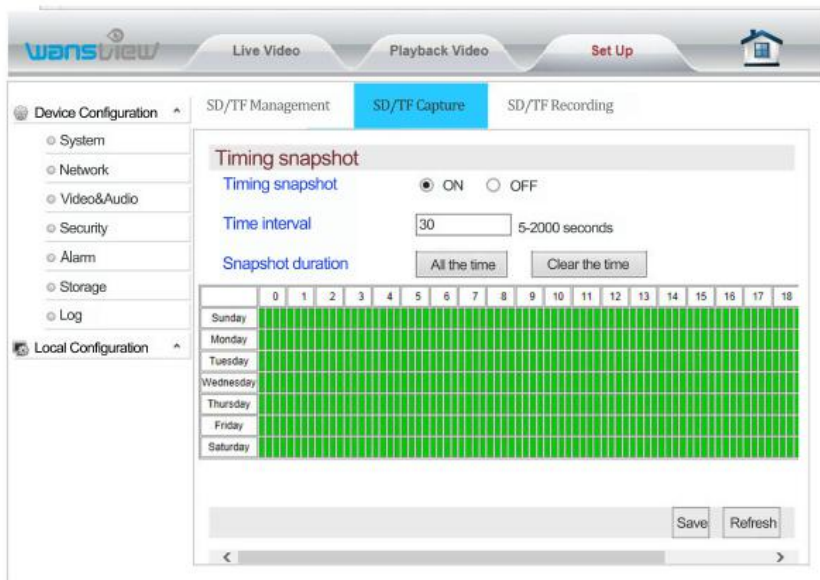
By default alarm is armed 24h/7 days. Users can choose specific days and time ranges.

3.4.6 Storage

SD Card Management(Not support in this model)

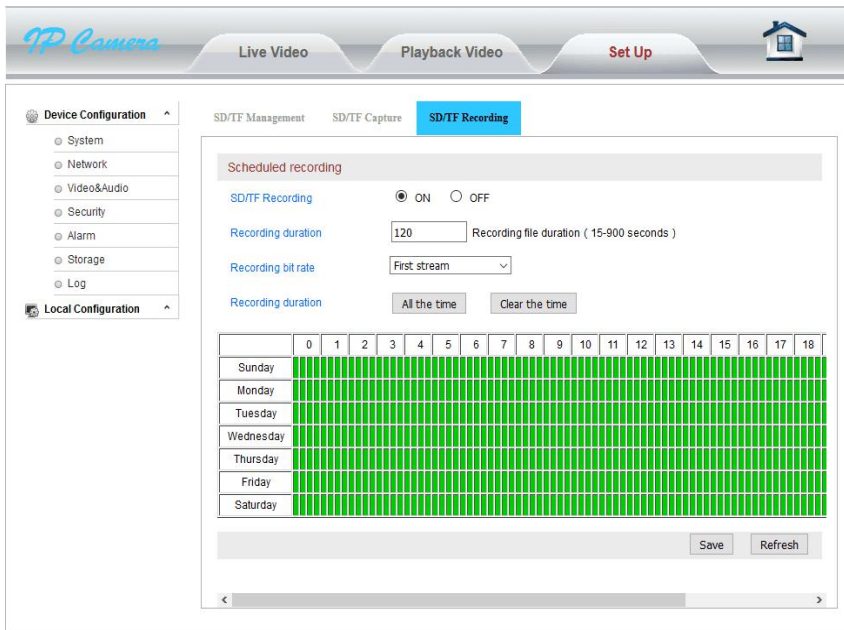


Storage > SD card Capture (Timed Snapshots)(Not support in this model)



Take Timed snapshots and save them on the SD card

Storage > SD Card Scheduled Recording(Not support in this model)

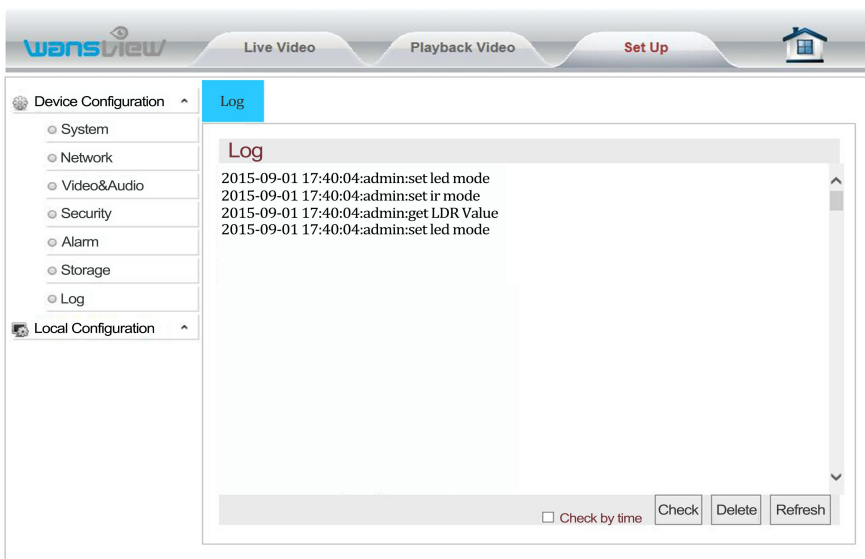


Schedule recording and store them on SD card. Set the time span of each recording.

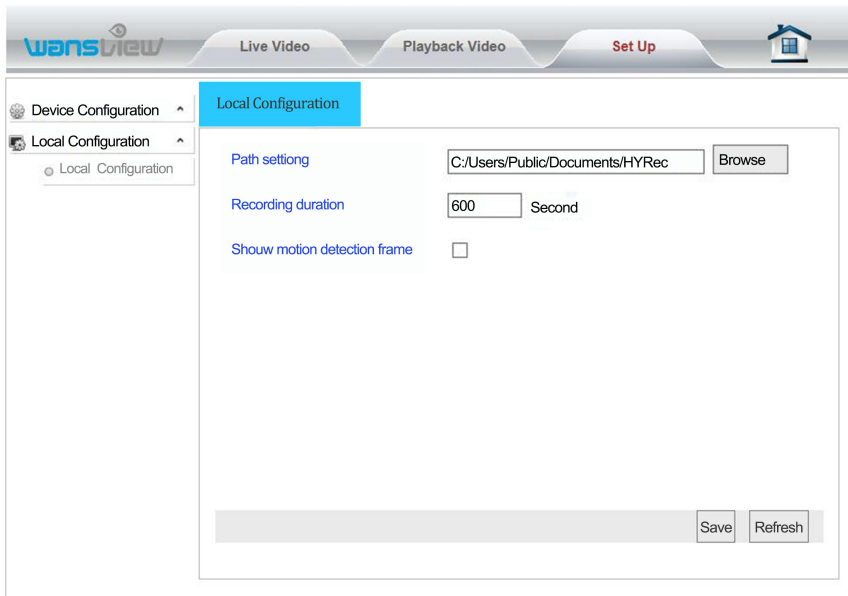
Choose the resolution/bit rate.

Reminder: The system default is automatic overwriting for the SD card video. If the storage space is full, the new video will automatically overwrite the earliest video file.

3.4.7 Log



Log > Local Configuration (not available for MAC users)



Enter "Local Configuration". You can set the save path for videos and pictures on your PC as well as the recording duration.

Reminders:

- 1: When using IE9 or higher, please run the browser video path and picture path as "administrator" so that you can save the files successfully. The default video path is "HYRec" on disk C. The default picture path is "HYSnap" on disk C.
- 2: The user can start up the Motion Detection Alarm and view the flashing box on the screen.

4. Manage Camera with other Apps and Software

Add Camera to iSpy Connect

Steps

1. Add IP Camera
2. In the Video Source mask, select the FFMPEG(H2.264) tab
3. In the URL field type: rtsp://user:password@IP:port/live/ch0 or ch1 or ch2
4. RTSP Mode: select TCP
5. Test
6. Click OK
7. In the following mask, click finish
8. The camera is online

User: your user

Password: your password

IP: your camera's IP (get it from the app)

Port: your camera's port (get it from the app)

Add the Camera on Blue Iris

In IP camera configuration, input:

- IP: the camera's IP address
- HTTP port: camera's port
- RSTP port: default 554
- User
- Password
- Make Model: NCM GA/GB
- Path: ch0, or ch1 or ch2

Click OK

Add the Camera to Sighthound Video

Set-up with Ethernet Cable - Add Camera by wizard

In camera setup, choose:

Camera Type: network IP Camera

Manufacturer: Other

Click Next

Choose: setup Sighthound video with a network camera that is already working

Click Next

Select your camera by the IP

Click next

Input User and Password

Follow the wizard

Add Camera by RSTP

In camera setup, choose:

Camera Type: network IP Camera

Manufacturer: Wansview

Click Next

Select Camera Type: other IP camera

Protocol: RSTP

IP address:

RSTP port: 554

Stream Path: live/ch0

Input user and password

Click Next.

5. Windows PC Software Access

5.1 About iSmartViewPro

iSmartViewPro is an IP centralized monitoring software provided by the SmartCloud IP Camera centralized monitoring software manufacturer. It supports monitoring, intercom, video recording, alarm detection and other functions on IP cameras on a LAN and internet environment.

iSmartViewPro supports installation and operation on Windows system.

Features of iSmartViewPro:

- Supports P2P cloud camera connection;
- Supports DDNS dynamic domain name connection;
- Supports multinational language switching;
- Supports local schedule video recording;
- Supports alarm recording and snapshot;
- Supports image settings;
- Supports user smart "skin changing".

5.2 Operational Requirements

For stable operation of iSmartViewPro,

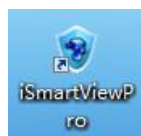
- Internal storage: Over 1G
- CPU: Dual-core CPU
- Internal storage: Over 1G
- Hard disk: Over 500G
- Operating system: Windows XP or above(When using XP, please use Compatibility mode. Kindly check FAQ 8.6).
- Screen resolution: $\geq 1024*768$

5.3 iSmartViewPro Installation

Access iSmartViewPro installation software:

Please download iSmartViewPro from official website of our company
<http://www.wansview.com/Service>

Please create a desktop shortcut when you install iSmartViewPro

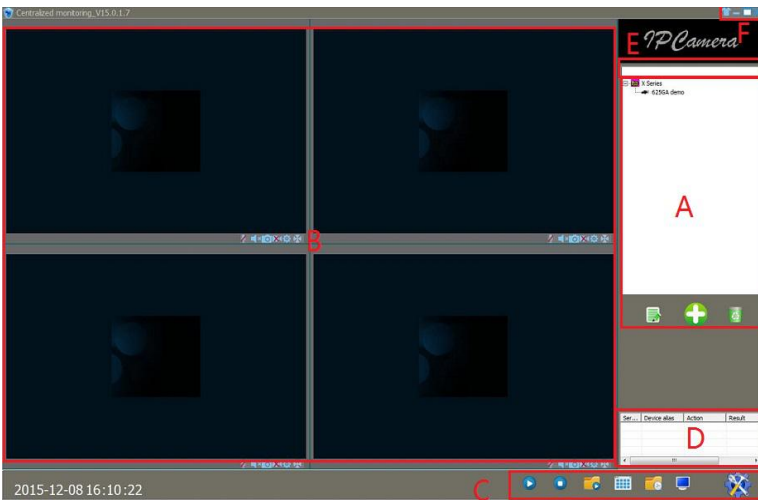


Desktop shortcut icon

5.4 iSmartViewPro Operation

5.4.1 CMS Interface

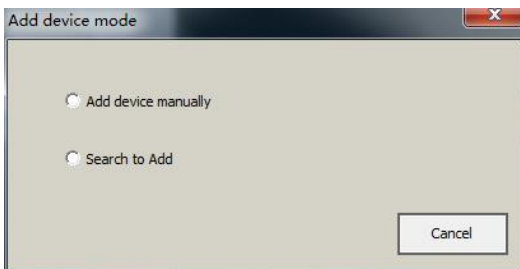
Double-click the desktop shortcut of iSmartViewPro on the desktop with the mouse to run iSmartViewPro client software.




- A: Camera control menu bar setting
- B: Video and video menu bar setting
- C: Local menu bar setting
- D: Camera operation log
- E: Search
- F: 🏠 System language switching and other function settings

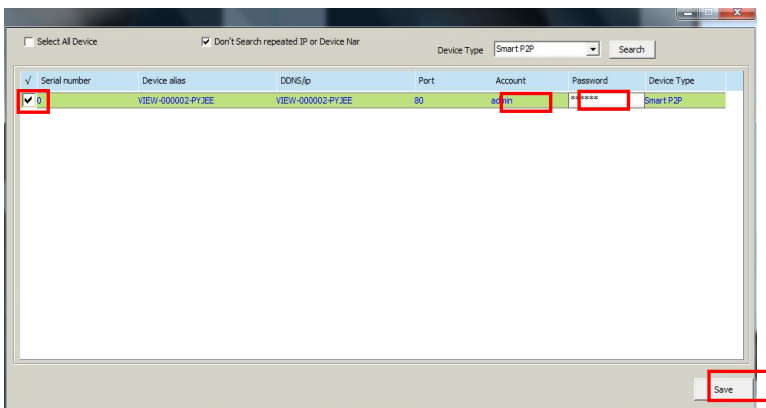
5.4.2 Access to camera

5.4.2.1 Add Camera



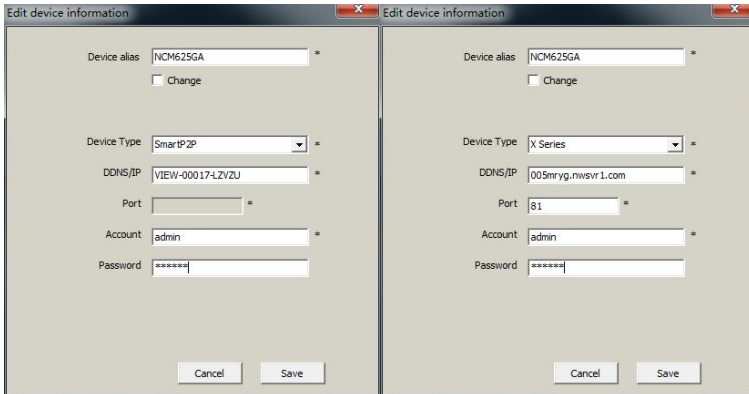
Click icon  to add camera. User can Add device manually or Search to Add.

a. Search to Add



Click "Search to Add" to access to search page. Tick corresponding device type for searching. Fill in the correct user name and password for the detected device.
 Reminder: After being saved, the device will be displayed in the device list.

b. Add device manually



Click "Add device manually" to add page. The items marked with "*" are required to be filled in.

Reminder: Please select correct corresponding "device type".

Please fill in DID while selecting SmartP2P. Please fill in DDNS or IP address while selecting X series.

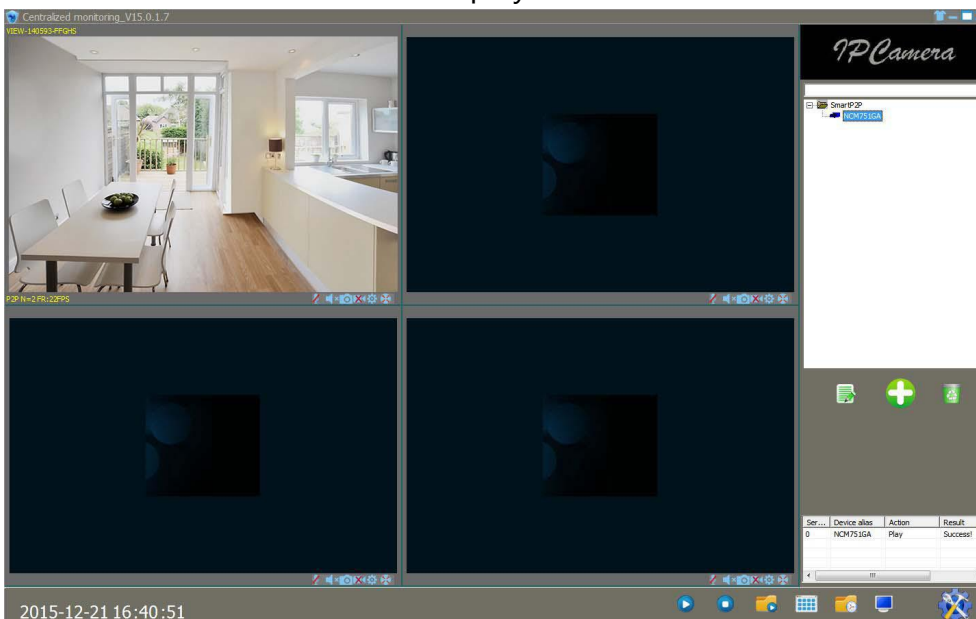
5.4.2.2 Edit / Delete Device




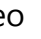
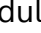


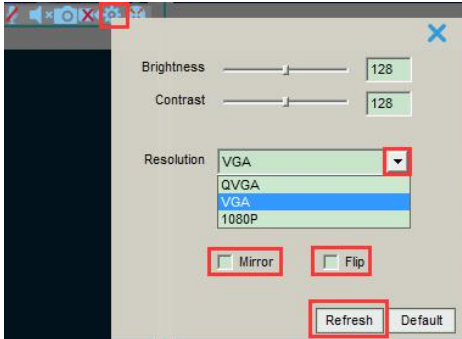
Select a camera in device list and click "Edit Device" or "Delete Device" to manage device.


5.5 Play Video

Double-click the device name to play video.




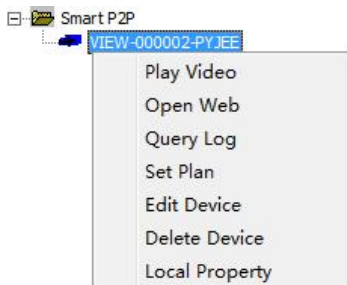
-  Click here to activate the camera's speaker and microphone.
-  Click here, user can capture live pictures and it will be stored to your local computer
-  Video status display (divided into two types:  manual video display status and  scheduled video display status)



Click  to adjust brightness and contrast of the camera. The user can choose resolution and can tick Mirror or Flip if the video is upside down.

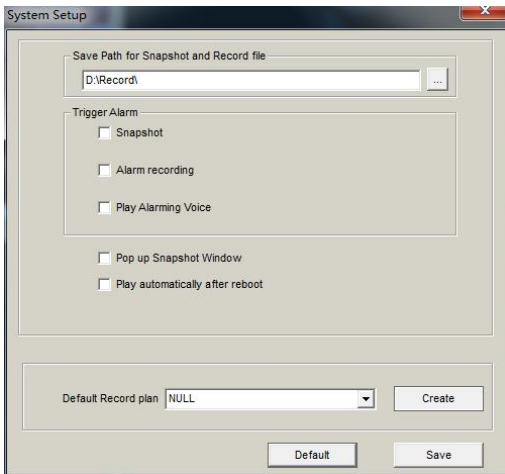



Click  to pan and tilt the camera by click Up/Down/Left/Right arrow.



Select the camera and right click the camera name, then more operation options will be appear.

5.6 System Settings



Click  to access to system setting.

1: Save Path: The default snapshot pictures and videos storage path is Disk D. The user can change the setting at his own discretion.

2. Alarm trigger: Supports snapshot, Alarm Recording, Play Alarming Voice.



Reminder: Only if set the alarm on the camera (motion detection/alarm)the local "Alarm triggering"

of iSmartViewPro be executed successfully.

3: Pop up Snapshot Window

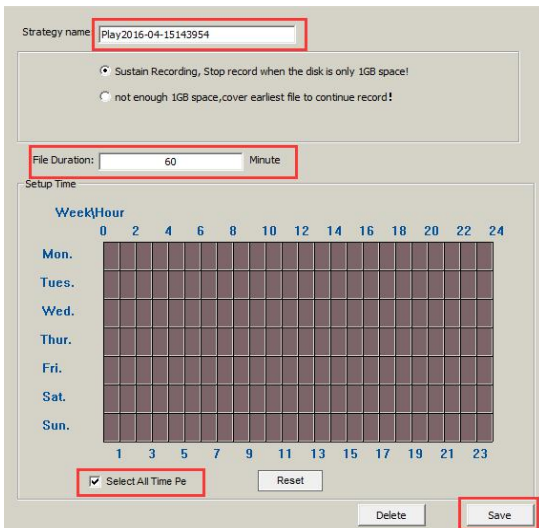
4: Play automatically after reboot: When it is clicked, the devices in the device list will be automatically connected and played after restarting the software.

Set 24/7 scheduled recording

User needs to create scheduled video when required to use local video scheduling to set the scheduled video; video status display (divided into two types:  manual video display status and  scheduled video display status);



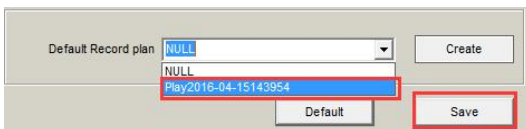
Create a default record plan



Tick Select All Time, and Save.



User can change the File duration. 60 minutes means each recorded file is around 60 minutes, you can change duration by yourself

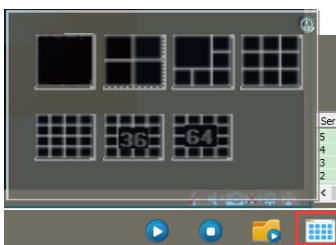
Reminder: While creating video scheduling, select “Sustain Recording, stop record when the disk is only 1GB space” or “not enough 1GB space, cover earliest file to continue record” .



Choose the created record plan, then Save.

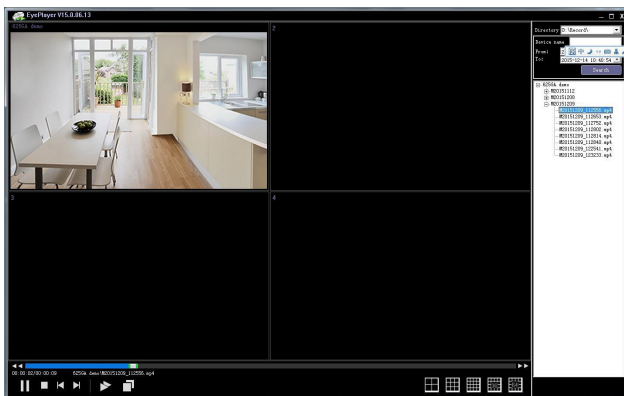
5.7 Local menu bar

  Play /close all devices in device list



View Camera on Multiple windows

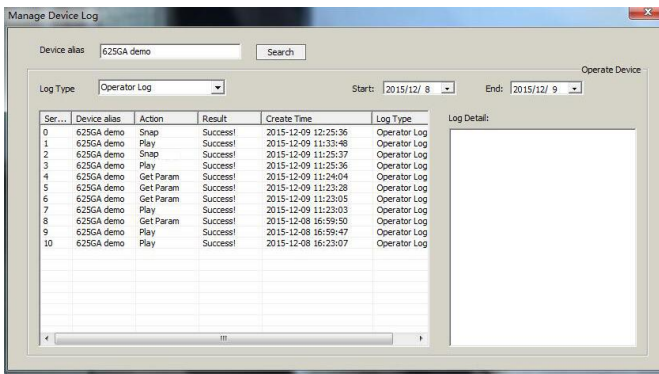
 Playback and Query Recorded video



Open the video playback player so that you can directly access corresponding video files of each camera according to the video path. Please refer to the figure below.



Manage device Log



On this icon, users can query camera operation, such as detailed operation time for Play, Snapshot Record, Get Param, as well as log type etc.



Full screen mode



6. Mac Software Access

6.1 About iSmartViewPro

iSmartViewPro 2.0 is an IP centralized monitoring software provided by the SmartCloud IP Camera centralized monitoring software manufacturer. It supports monitoring, intercom, video recording, alarm detection and other functions on IP cameras in a LAN and internet environment.

iSmartViewPro 2.0 supports the Mac OS operating system.

Features of iSmartViewPro 2.0:

- Supports SmartP2P smart cloud platform camera;
- Supports multinational language switching;
- Supports local video;
- Supports local video playback;
- Supports image settings;

6.2 Operational Requirements

For stable operation of iSmartViewPro, the following minimum system parameters are suggested:

CPU: Dual-core CPU
Internal storage: Over 4G
Hard disk: Over 500G
Operating system: Mac OS*10.9 or above
Screen resolution: ≥1024*768

6.3 iSmartViewPro Installation

Access iSmartViewPro 2.0 installation software:

Download and install the software from our website: www.wansview.com Double click to open the dmg file. Drag iSmartViewPro 2.0 to copy it to the computer according to the direction of the arrow.



6.4 iSmartViewPro Operation

6.4.1 Interface

Run iSmartViewPro2.0 client software on the computer as shown in the figure below:

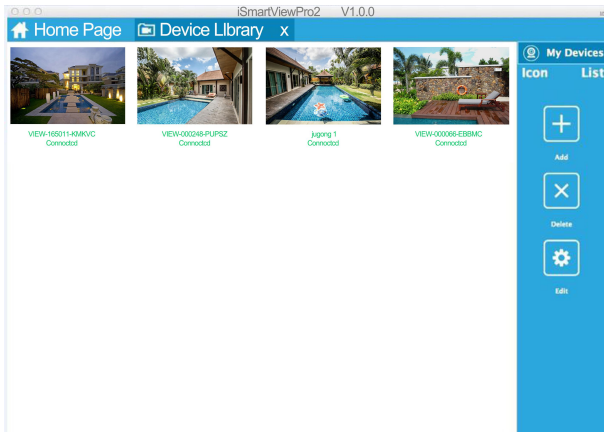


6.4.2 Device Library

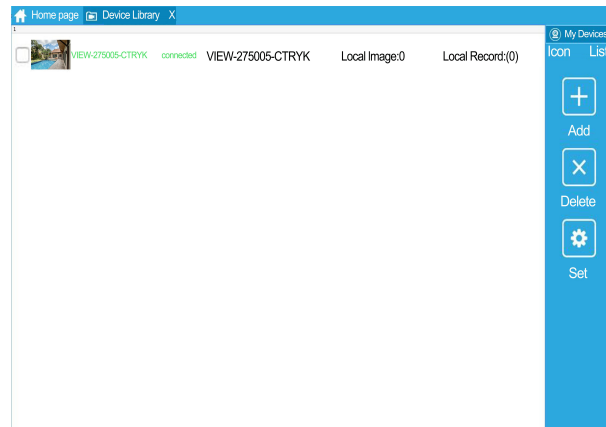
Check setting list, add, delete and advanced settings of the camera

www.wansview.com

Icon: Show camera list by Icon




List: Show camera list by List.

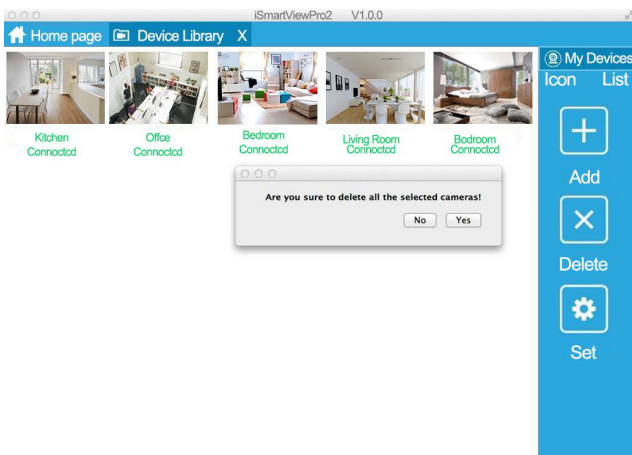



Add



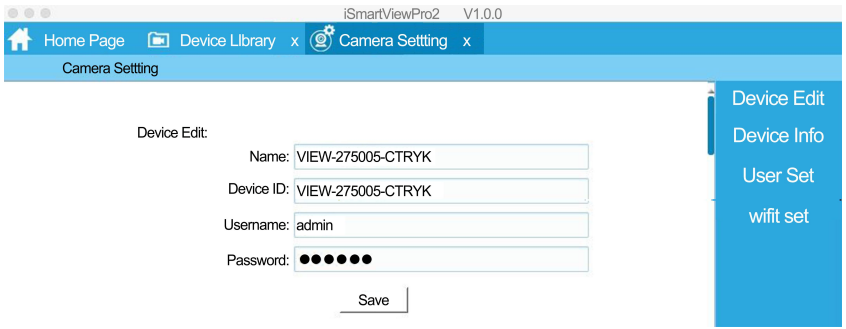
Click  to enter Add Camera. Cameras can be added manually or Lan Search

Delete



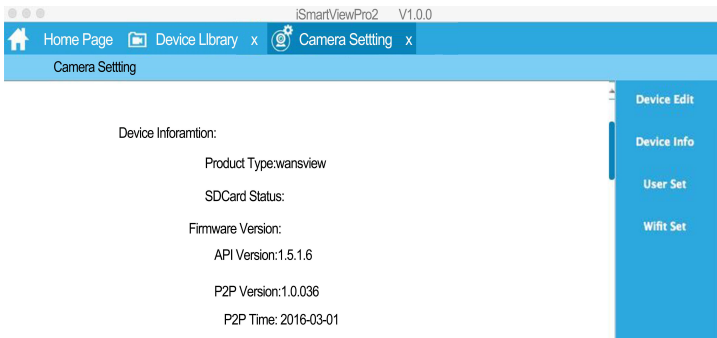
Select a specified camera. Click  to delete the camera from the list.

Set Device Edit



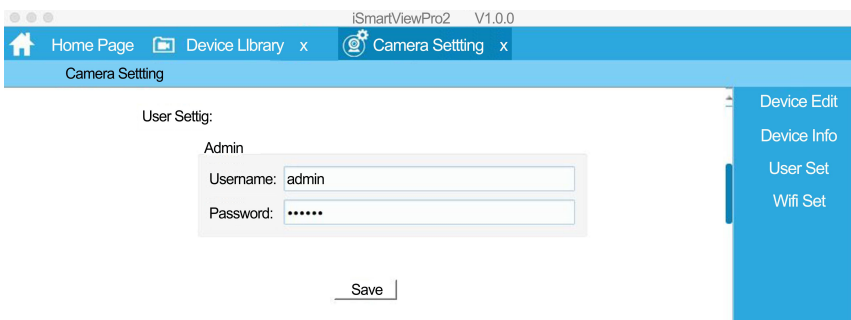
To modify device name and change password

Device information



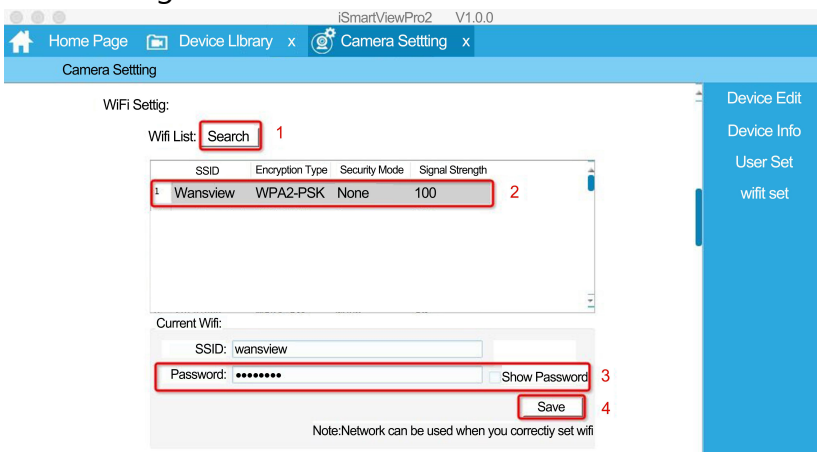
To check relevant information of the camera

User Setting



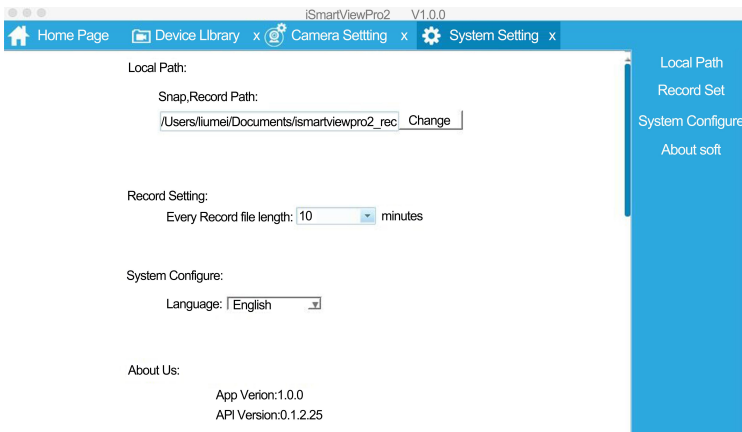
To modify user name and password of the administrator

WiFi Setting



- 1: Search your WiFi SSID
- 2: Choose your WiFi SSID
- 3: Input your WiFi password, and make sure it is correct.
- 4: Save

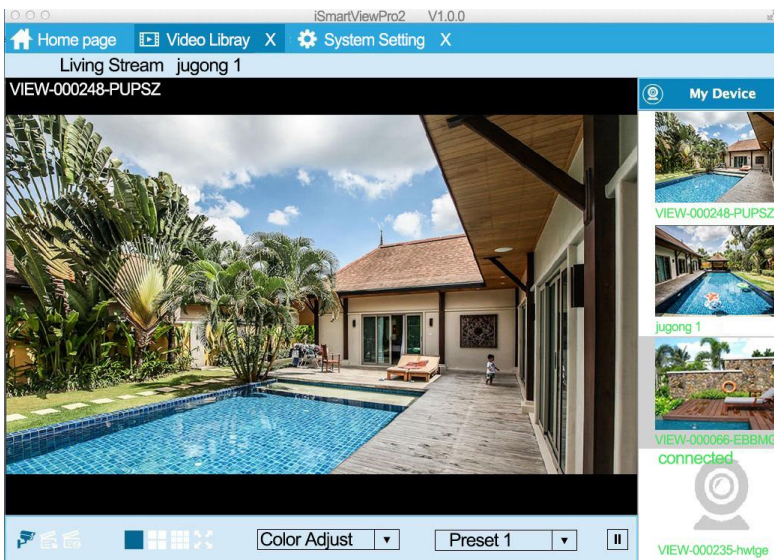
6.4.3 System Settings



On the system settings, user can set Local path for snap picture and recorded videos, as well as set the record time length for each file. User can also choose language this page.

6.4.4 Video Library

Click the cameras at the right side for real-time viewing

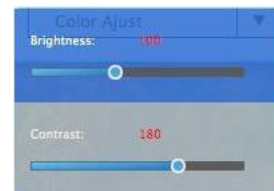


Live Video

Real-time Live video, Snap, Record for the camera, and choose Resolution and IR led ON/OFF.

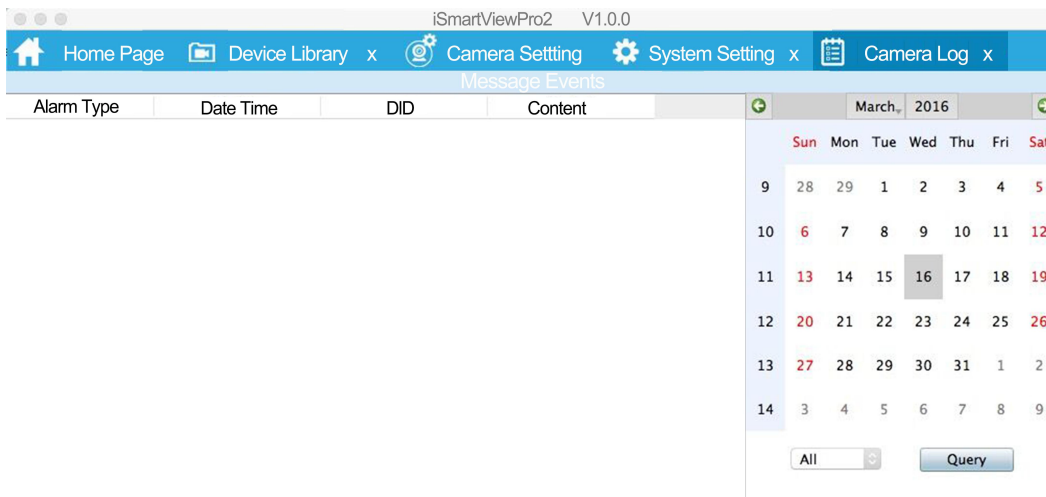
Local Recording

Check local recorded files or playback the local recorded video.



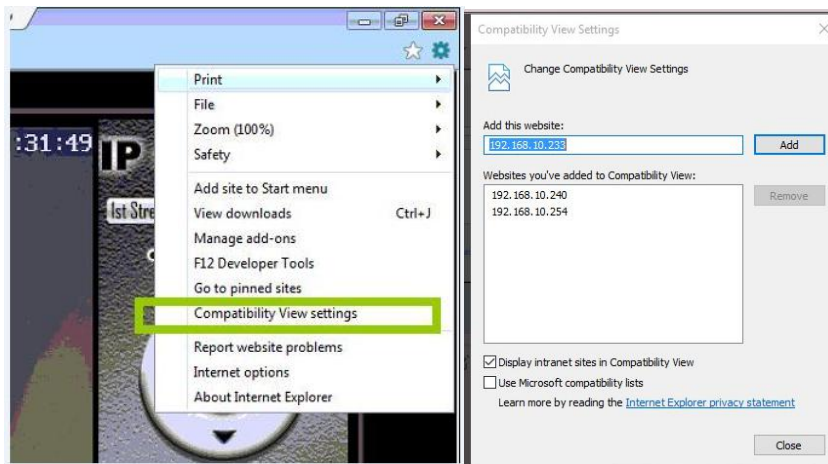
6.4.5 Camera Log

The user can get online information of the device through a camera log query, such as alarm information etc.



7.FAQs/Troubleshooting

7.1 Compatibility Settings for Internet Explorer

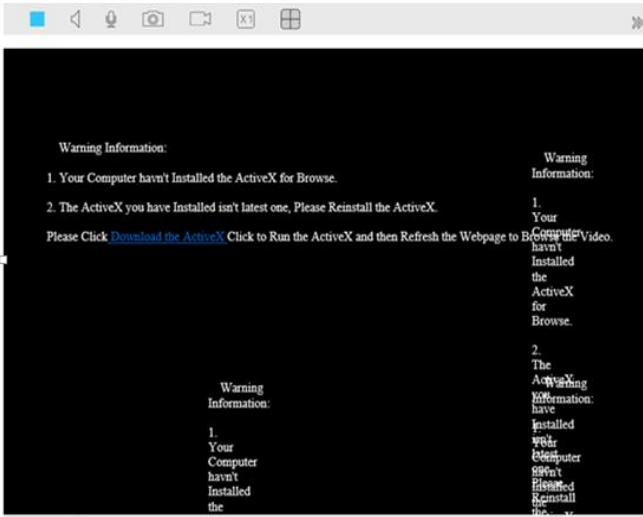


When using Internet Explorer 9 or higher to view the camera, if you have already downloaded a plug-in for camera, but still have no live video, please perform the following operations:

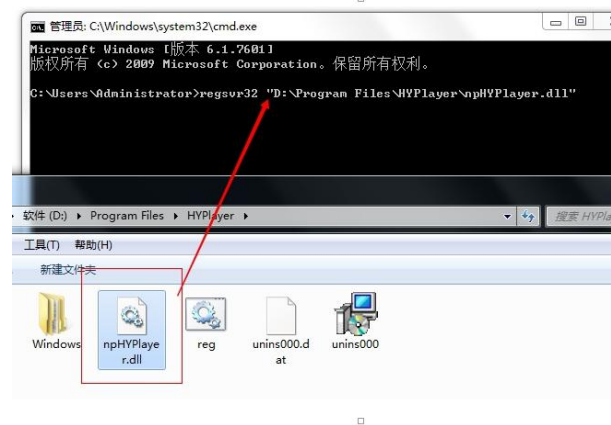
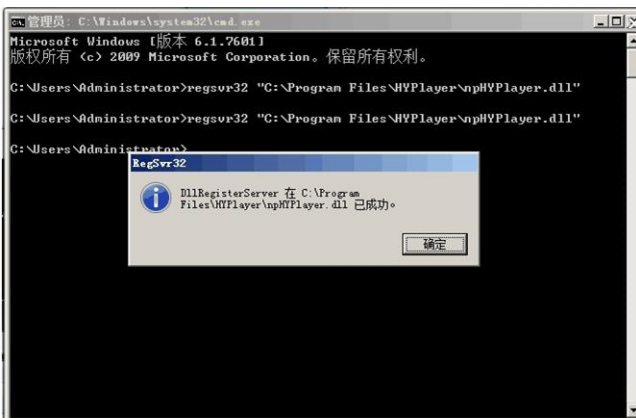
Click Compatibility View Setting > Add > Close.

7.2 Plugin Issues

Question: I've already installed a Plug-in for the browser, but the live stream shows messy code like the image below:



Please follow these steps to fix this issue: Open CMD ==> input command "regsvr32", press the space key==> find the installation package for "npHYplayer.dll", then drag "npHYplyaer.dll" into the CMD window after "regsvr32" (as shown in Figure 8.4) ==> Press Enter, a dialog box will pop up (Figure 8.5) that says that the npHYPlayer.dll has been installed successfully. Click to confirm==>You can refresh or re-open the web page to view camera in real time.

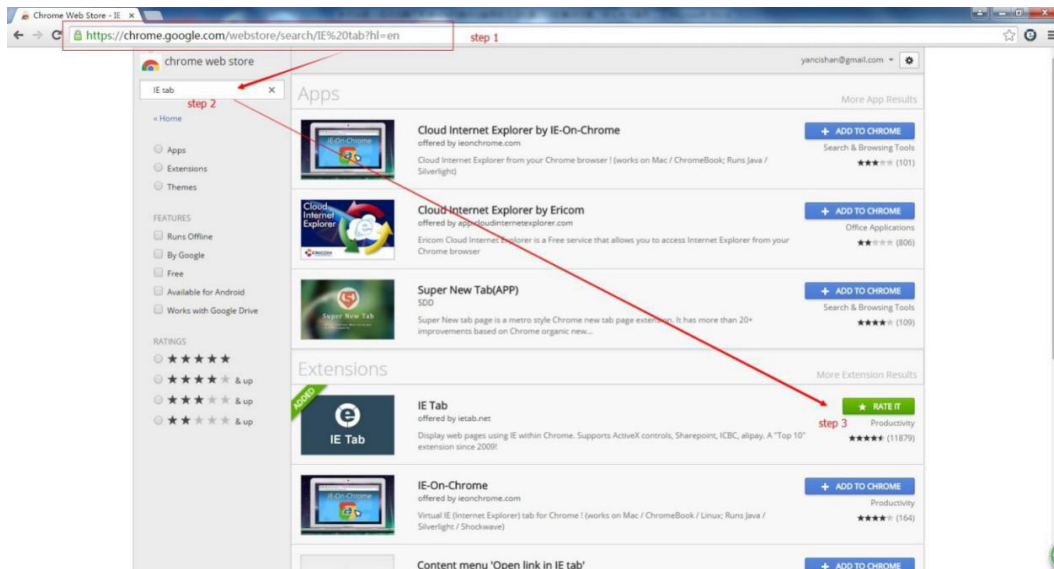


7.3 Install IE Tab for Chrome 43

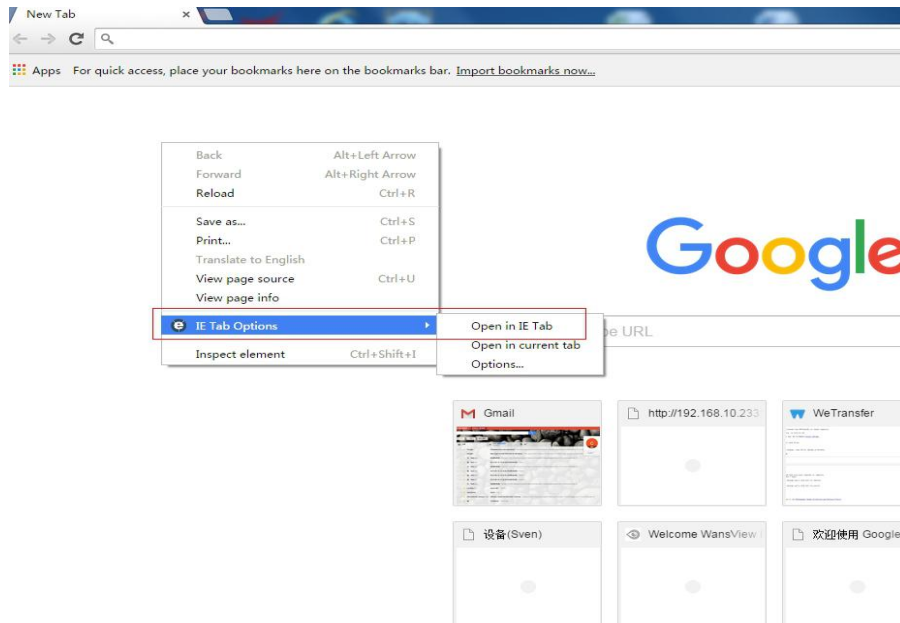
Due to the fact that Chrome43 and higher no longer support NPAPI plug-in, IE tab is need to be installed for Chrome.

Here is how to install an IE tab for Chrome:

1. Visit <https://chrome.google.com/webstore/search/IE%20tab.hl=en> to go to the Chrome web store to download and install an IE tab.



2. Open Chrome, right-click on a blank place; choose the IE Tab option-- click Open in IE Tab

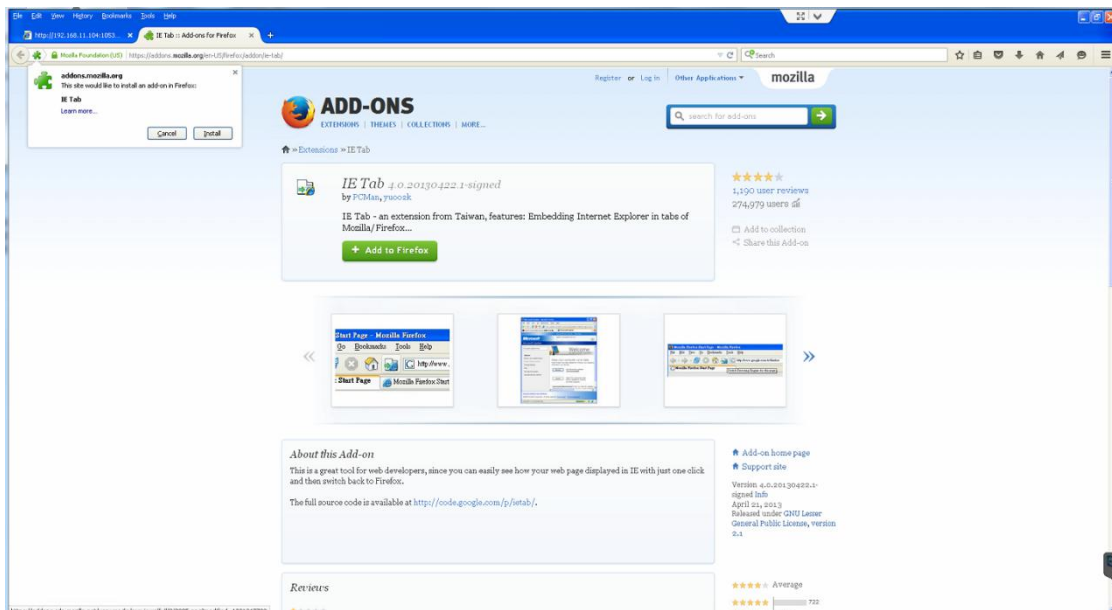


7.4 Install IE Tab for Firefox 42

Due to the fact that Firefox 42 and higher no longer support NPAPI plug-in, IE tab is need to be installed for Firefox.

Here is how to install an IE Tab for Firefox:

1. Please visit <https://addons.mozilla.org/en-US/firefox/addon/ie-tab/> to download the IE Tab for Firefox.



2. Open Firefox, right click and choose "View Page in IE Tab". Then you can view live stream on camera.



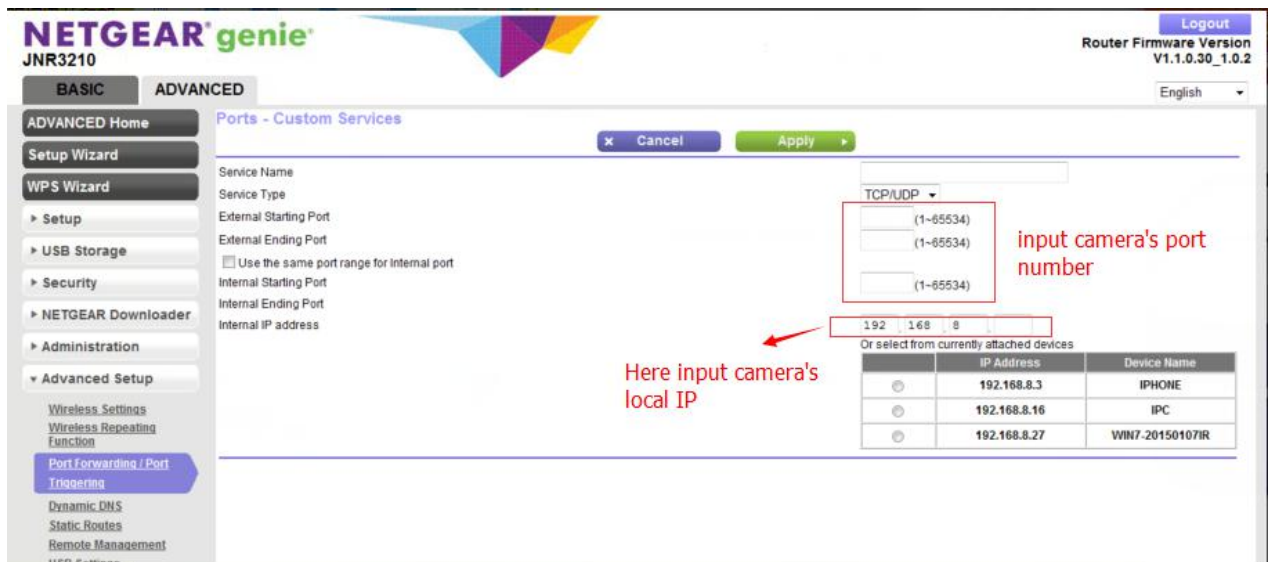
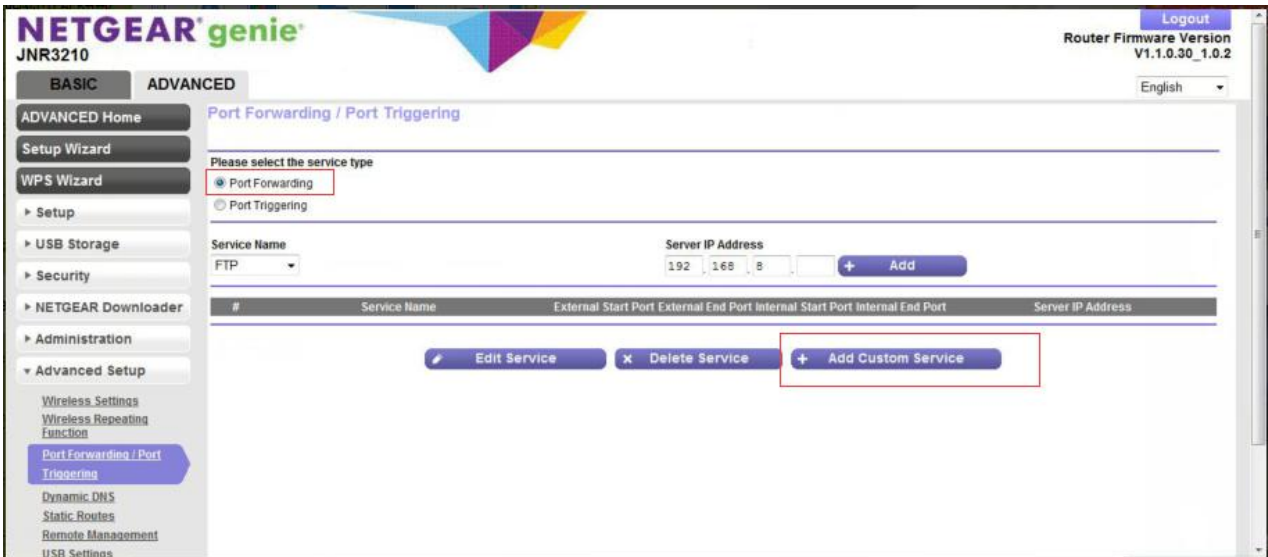
7.5 Port Forwarding

Every time you reboot the camera, the Local IP Address will be changed, so you'd better set the camera's local IP using the SearchPro tool.

There are two ways to do port forwarding:

1. One router connected (only one router used, and the router is directly connected to the WAN)

Log on the router, find the Port forwarding (or Port Mapping or Virtual Server), then add camera's local IP and Port as in the figure below:



2 .Multiple routers connected (there are 2 or more routers used, and your camera is not directly connected to the router that is connected to the WAN port)

For example, there are two routers . Router 1 is directly connected to the WAN port, and router 2 is connected to router 1. The camera and computer are connected to router 2.

Router 1 Local IP: 192.168.0.5

Router 2 Local IP: 192.168.10.12

WAN IP: 192.168.0.10

Camera IP : 192.168.10.14 Port :255

First, please log on to router 2, find port forwarding, then add the camera's IP and port.

Second, please log on to router 1, find port forwarding, then add the Router 1 IP and camera's Port number.

Note: Because each brand of router is different, port forwarding methods may be

different, please consult the user manual of your router to carry out port forwarding.

Technical Support

We hope your Wansview IP Camera is enjoyable and easy to set up and use. You may have some additional questions or concerns that are not clarified in this user manual.

Note:

This user manual is for reference . Slight differences may be found in the user interface. All the designs and software here are subject to change without prior written notice. For latest firmware and user manual, please go to www.wansview.com to download.

Warranty Policy

All products sold by Wansview are covered by **12** months warranty.
Wansview endeavours to provide customer highest satisfactory.

Should a customer receives any product which is faulty or dead on arrival please contact us first. Our technician will then examine the faulty product and process the warranty claim from there.

When contacting us, please have the following information handy for fast and quick processing:

Model name:

App name:

Your problem(Attach picture to show your problem if necessary):

Thanks very much.