

HD Wireless AV Sender

Wireless IR Remote Extender
2.4G/5G Dual-Band Series



Please Support Environment Protection

Waste electrical products should not be disposed of household wants. Please put them to the recycle facilities. Check with your local authority or retailer for recycling advice!



2 0 1 8 0 3 2 9 0 5 9 0 2

User Manual

VEN1.0

Contents

© The copyright of this manual belongs to the manufacturer.

Esteemed Customers:**Thank you for purchasing our product!**

Please do read this guide book carefully and thoroughly for better use of this product. It works for home use. Every check of this product (if it works normally) before uses it is necessary. If there any default or damage of this product, please maintain or repair it in time.

This final explanation of the content written in this manual book belongs to its manufacturer. Anyone or any party is not allowed to copy all or partial content of this Manual Book. It is not authorized to anyone or any party. No notifications would be given, if any change of this Manual Book.

I. Product Description	1
1. Function & Features	1
2. Standard accessories	2
3. Specifications	3
II. Hardware and Installation Instructions	4
1. Transmitter panel description	4
2. Receiver panel description	4
3. Transmitter installation	5
4. Receiver installation	6
III. Operation	7
1. Power switch	7
2. 2.4/5GHz channel selection	7
IV. Common Problems and Troubleshooting	11
V. Warranty Service	13

I. Product Description

Thanks for buying our products along with the global users. The HDMI Wireless AV Sender is a kind of wireless electronic product which can realize the audio video signal sharing in different rooms for family entertainment. It consists of a transmitter and a receiver. Adopting smart 2.4/5GHz dual-band WIFI Wireless transmission schemes and having advantages of long transmission distance, no splash, no snow, strong anti-interference and high mobility, etc. By means of radio waves, it can transmit the signal from DVD, DVR, CCTV camera, IPTV, Satellite receiver, Digital TV Set Top Box or any other AV devices at transmitter end to TV sets in different room at receiver end.it can support the IR remote control at the receiver end to realize the function of wireless control of devices from another place. So that you can enjoy freely wireless HD AV sharing data and Hi-Fi audio and video effect.

1. Function & Features

- The product consists of transmitter and receiver and can wireless transmit HDMI high-definition signals to receiver end.
- The transmitter supports one HDMI signal input, and one HDMI signal output enables the signal terminal to watch video simultaneously.
- HDMI resolution: 720P~1080P@50/60Hz, SVGA~WUXGA a variety of commonly used computer resolution.
- Adopt international 2.4G/5G wireless dual-band transmission signal, faster transmission speed, stronger anti-interference.
- Adopt external dual-gain antenna, ultra-long transmission distance, can up to 50-100 meters in open space (the distance may be affected by the environment).

- Support IR Remote controller to long range extend, can remote control signal source equipment at the receiver.
- Pure hardware mode, plug then use, connect the computer without installing the driver. Support WEB configuration interface, simple and easy to operate.
- Support DVD, DVR, IPTV, CCTV camera, Satellite receiver, Digital STB and audio and video output device, and can use IR remote to control DVD, DVR, IPTV, Digital STB and other devices.
- Resolution is 1080P@60Hz and downward compatible with audio and video transmission, the wireless receiving image is clear and stable, colorful and high sound quality without noise.
- Easy to install, small size, exquisite fashion, Machine dimensions:158x128x37mm.
- The wireless module are FCC and CE certificated. Wireless application is safe and reliable.

2. Standard accessories

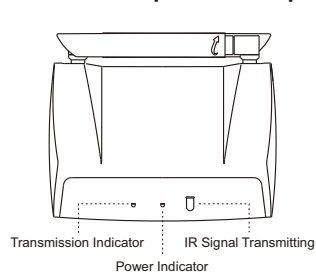
Transmitter	-----	1 set
Receiver	-----	1 set
Power Adaptor	-----	2 pcs
HDMI Cable	-----	2 pcs
IR Extender Cable	-----	2 pcs
User Manual	-----	1 copy

3. Specifications

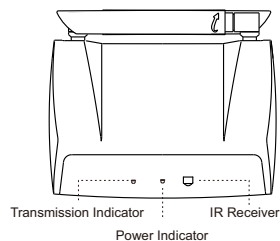
Input/Output Jack	HDMI1.4/HDCP1.4
Output Image Resolution	720/1080P@50/60Hz
HDMI Audio Format	1080P HQ
HDMI Max Transmission Rate	6.75Gbps
Wireless Transmission Standard	IEEE 802.11a/b/g/n
Operating Frequency	2.4GHz, 5GHz ISM Band
Max wireless transmission rate	2.4G 150M, 5G 300M
Wireless transmitter power (IPEX)	16±2dBm
Transmission Distance	50-100m(open space accessibility)
IR Frequency Range	38KHz
DC Input	AC 100V-240V 50/60Hz
DC Output	DC 5V/2A
Operating Temperature	-10 ~ +50°C
Operation Humidity	10-80%RH(Non-condensing)
Product Dimension	158x128x37mm

II. Hardware and Installation Instructions

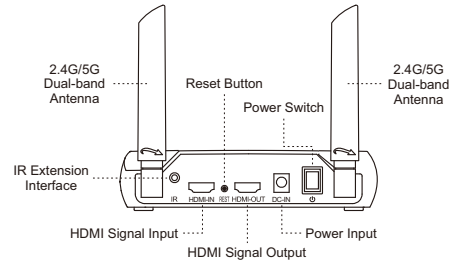
1. Transmitter panel description



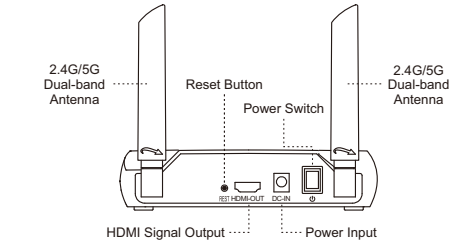
2. Receiver panel description



1. Transmitter panel description

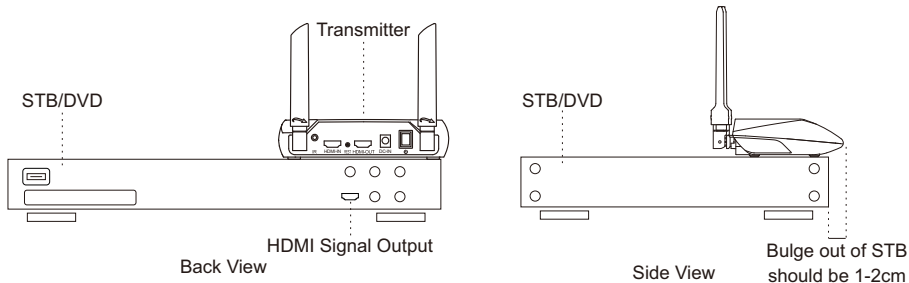


2. Receiver panel description



3. Transmitter installation

- Put the transmitter near to STB and other signal source device, connecting the STB HDMI output with the transmitter HDMI input, then connecting the receiver HDMI output with the television HDMI input.
- Put the transmitter above the STB or other device so that the IR transmitting window bulge out by 1 to 2 cm and vertically aims at the receiving window of the IR signal of the STB or other device.

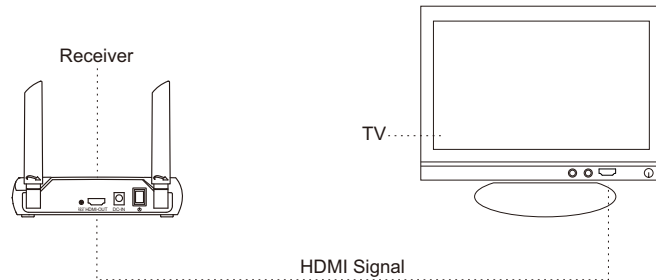


Hints:

The receiving window of the IR signal of the STB or other device is generally marked with "IR". Please vertically aim at the IR signal transmitting window of the transmitter. And keep the transmitter away from other devices and metal devices to avoid effecting wireless signal transmitter.

4. Receiver installation

The receiving window of the IR signal of the STB or other device is generally marked with "IR". Please vertically aim at the IR signal transmitting window of the transmitter. And keep the transmitter away from other devices and metal devices to avoid effecting wireless signal transmitter.

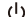


Hints:

After receiver connects the TV sets, you should change from TV to AV channels and keep the receiver away from other devices and metal devices to avoid effecting wireless signal reception.

III. Operation

1. Power switch

Pressing the power switch  can switch on or off the power to the transmitter or receiver and enable it to transmit the signal or close.

Hints:

To ensure that the product can be used normally, the product should be connected when power off in case the product be damaged. Switch on when finish connection and never plug in or out at will. Please turn off the product if long time not use it.

2. 2.4/5GHz channel selection

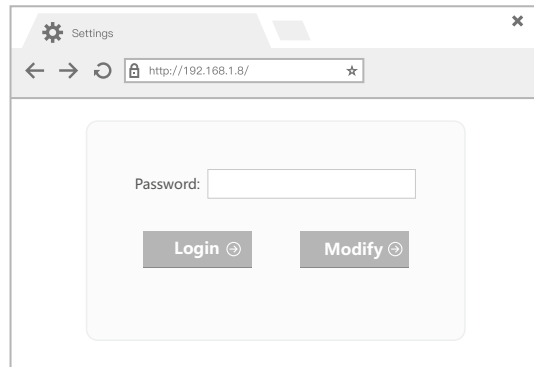
In order to prevent mutual interference between devices on the same frequency, this product supports setting the working frequency band, transmission channel, and device name SSID (customizable name SSID) of the product through the device background WEB. In order to ensure that the content you are viewing is securely transmitted on the device, please log in to the WEB setting interface through your mobile phone or laptop before the first use, and change the name SSID and password. The specific steps are as follows:

A. Connect the power adapter to power the transmitter and receiver and turn on the switch.

B. Open the WIFI WLAN for configuring the phone/computer, search for the name SSID: PAKITE-AV-Sender WIFI network, the default password: 11111111.

Note: The factory default configuration is 5G WIFI signal, if the device cannot be found: PAKITE-AV-Sender WIFI network, please configure it with a smart phone firstly and change it to 2.4G WIFI signal to find the product. Suitable for some older devices.

C. Open the browser, enter the IP address: 192.168.1.8 and then click the Enter button to display the following interface.



D. Enter the default login password: admin, click [Login] to enter the configuration interface, if you need to modify the login password, please click [Modify]. After modifying the relevant parameters, click [save] to save and exit, and click [reset] to restore the factory settings.

2.4G/5G

Select transmission frequency

Wireless Band: 2.4G
Channel: 2.4G
Name(SSID): PAKITE-AV-Sender
PSK Password: 11111111
save reset

Modify product name

Change login password

Select frequency channel

Wireless Band: 2.4G
Channel: 36
Name(SSID): 36, 40, 44, 48
PSK Password: 11111111
save reset

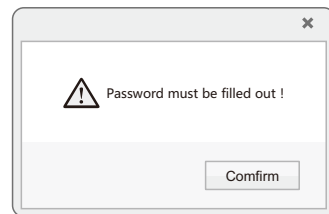
After changing the product name and password, or if the REST product needs to be powered off and restarted, the WIFI network name of the product can be found.

E. If you accidentally forget the login password, you can also restore the factory settings through hardware operation. The method of operation is as follows:

Under power-on status, press the REST button on the back of the transmitter and receiver to reset. After pressing the reset button, the black screen on the TV screen indicates a successful factory reset.

 **NOTE**

Both the transmitter and receiver can be reconnected after a hardware reset at the same time.



IV. Common problems and troubleshooting

Before powering on, you should carefully check whether the cable is normal and must ensure that all interfaces are connected correctly.

1. There is no picture and audio

- A. Check whether the receiver power supply is normal.
- B. Confirm that the TV input channel is correct.
- C. Check if the HDMI cable is damaged.

2. Showing Connecting

- A. Check the transmitter power supply is normal.
- B. Check whether the WEB settings are correct.
- C. Press the product reset button or power off to restart the product.
- D. Cause interference with the same frequency, adjust the transmission frequency or frequency channel, avoid the interference frequency.

3. Receive display No signal

- A. Check the signal source HDMI output signal is normal.
- B. Confirm the output resolution of the signal source is within the support range.
- C. Make sure the source is connected to the transmitter's HDMI input.

4. Transmission distance close

- A. Inadequate transmission signal, adjust the angle of the antenna or shorten the distance of devices.
- B. Adjust the placement and height of transmitter and receiver to enhance wireless signal transmission.
- C. Brick walls, metal doors, and concrete walls cause wireless signal attenuation to affect the transmission distance.
- D. Interference that caused by the same frequency, adjust the transmission frequency or frequency channel, avoid the interference frequency.

5. The image is interfered

- A. Inadequate signal transmission, adjust the angle of the antenna or shorten the distance of devices.
- B. Adjust the placement and height of transmitter and receiver to enhance wireless signal transmission.
- C. Interference that caused by the same frequency, adjust the wireless frequency or frequency channel to avoid the interference frequency.

6. Unable to log in the web settings interface

- A. Verify the transmitter and receiver are powered on and connected successfully.
- B. Check whether the IP address configured on the device is set to the static IP type.
- C. Check whether the IP address configured on the device is set to 192.168.1.XXX.
- D. Try to replace the browser with a different browser and log in to the Web Settings screen. Adjust the wireless frequency or frequency channel to avoid the interference frequency.

7. IR wireless return function is insensitive

- A. Adjust the placement and height of the transmitter and receiver to enhance wireless signal transmission.
- B. Transmitter have IR signal transmission function, such as the transmitter placed on the "top box" above, check whether the transmitter bulging "set-top box" 1-2cm.
- C. Transmitter have IR signal transmission function, such as using the external IR Extension cable. Try to keep the transmitter away from the "set-top box" and avoid sending infrared signals at the same time to cause remote control conflicts.

V. Warranty Service

**Warning**

**Switch on only after the connection and never plug in or out at will.
The product is for home use instead of professional industrial use.
Please don't take apart without proper professional knowledge.**

1. Warranty is only available to customers who buy this product through legal approach.**2. After-sales promise:**

Every customer designated dealers to buy products in our company, if there is product quality problems under the normal use within 3months from the day you buy the machine, user can bring the valid credentials or sales invoice to the original dealer where you bought it to replace the same model of the products. If there are product quality problems within 12months,you can request free warranty(not including common accessories).

3. Additional fee will be charged in any of the following situations:

- A. The warranty period is expired.
- B. Failure of damage caused by connecting other device.
- C. Failure or damage caused by repairing or transforming by yourself.
- D. Failure or damage caused by not following the operation instructions of the product.
- E. Failure or damage caused by collision, falling or other non-quality problems.
- F. Damage caused by fire, lighting strike or other unexpected disasters.

For repairing products which are damaged by the above situations, users should bear the fee of replacement of the damaged components as well as the shipping fee.

Solemn Statement:

The manufacturer assumes no liability for irreversible damages to other devices caused by these situations!

Memo: